

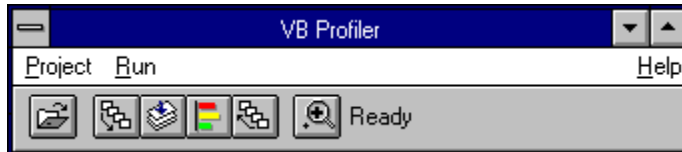


Copyright © 1993 - 1995 Andreas Fehr

Contents

VB Profiler Version 0.60.002

Check your VB Apps upon speed and process flow.
Easy handling and full power of accurate data.






Test and improve the performance of your own code.

Reference







[Menus](#)

[Index](#)









Menus

-  Project Menu
-  Run Menu
-  Help Menu


Menus


-  Project Menu
-  Project Open
-  Project Preferences
-  Project Exit
-  Run Menu
-  Help Menu


Menus

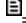
-  Project Menu
-  Run Menu
-  Run Stamp
-  Run Make EXE
-  Run Profile
-  Run Remove Stamp
-  Run Analyse
-  Help Menu

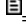
Menus

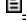
 Project Menu

 Run Menu

 Help Menu

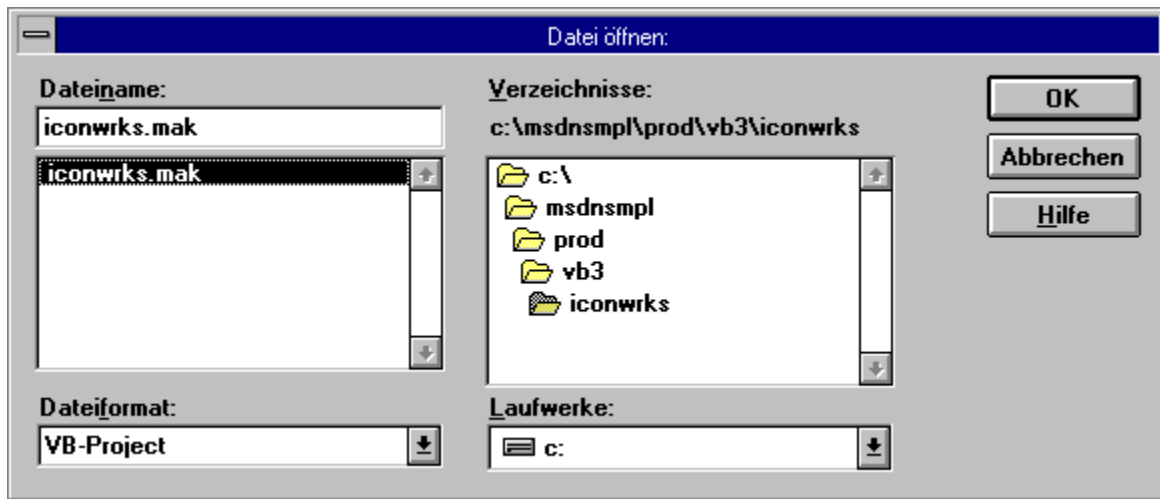
 Help Unknown Datatypes

 Help Known Problems

 Help About

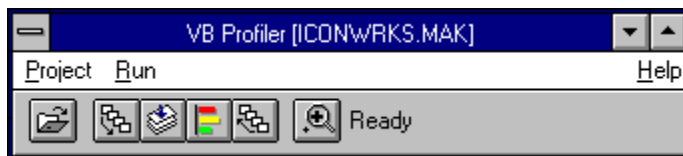
Project Open

Open the project you want to examine:

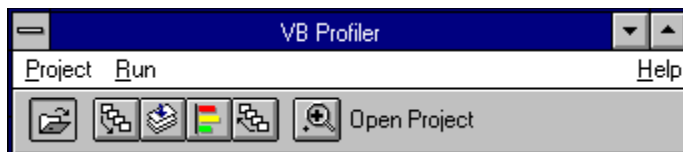


Be sure you have stored all the files from the project as text!

The Caption of the main window indicates the project you are working with:

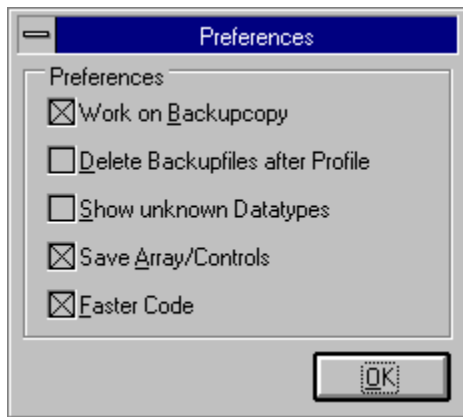


You may use the tool to access this function.



Project Preferences

The following options are available for your purpose:



- Work on a Backupcopy of your project. So you are sure you wont change anything of your original code.
Although we have tested this product and it looks save, we recommend this option.
Pros: Make temporary changes to your project not affecting the original files
Cons: The additional files take more space on your harddrive.
- Deletes the backupfiles the software has worked with. Caution, the software deletes all files in the backupdirectory.
Pros: Save harddiskspace.
Cons: If you take a brake (even programmers have to eat <g>) you have to restamp all files.
- Show unknown datatypes as the occur.
Pros: ...
Cons: You have to Click the MsgBox. Takes time.
- Stores some additional lines to the files so the executing program doesn't crash if there is a empty array or a unset control.
Pros: Less crashes.
Cons: Takes longer to stamp and unstamp. Uses more Harddisk.
- Adds faster code to to project (Up to three times faster).
Pros: Project runs faster.
Cons: If your program crashes with a "GD protection fault" the datafiles will not be closed. There is no problem with "VB Trappable Errors".

Run Stamp

Stamps the additional code into the files of your project.

Be sure, you have the files of your project saved in text mode. Unless you haven't stamped your files, the other functions result in the following error message:



For additional information on the stamp process open the stamped files of your project.

You may use the tool to access this function.



Run Make EXE

Starts VisualBasic and makes an EXE file. If VB is running, the VB running error occurs.

If you have not stamped your files of the current project. The following error occurs:



You may use the tool to access this function.



Run Profile

Runs the created EXE file. Play the game and invoke the functions you'd like to. The data will be collected in the file "vbpro.dat".

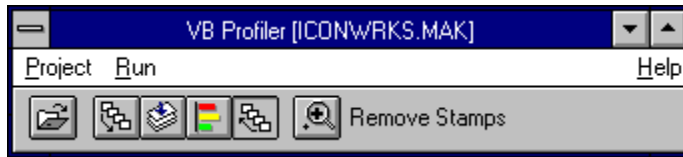
Be sure you have switched the 32 bit file and disk access on!

You may use the tool to access this function.



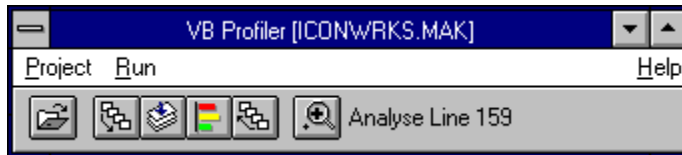
Run Remove Stamp

You may use the tool to access this function.



Run Analyse

The lines are counted up to an even number. Otherwise there is an error in the profilerdata.



For every function in the alphabetical list there is the following information:

Calls number of hits

Firsttime first time of occurrence in seconds

Lasttime last time of occurrence in seconds

Mintime minimal time in seconds

Maxtime maximal time in seconds

Total total time in seconds

Time/Call average time per call in seconds

In the call list are the functions within there natural occurrence (as they are called in the program).

You have the enter time and the leaving time and the arguments of the sub/function:

Profile Data							
All Functions:	Calls	Firsttime	Lasttime	Mintime	Maxtime	Total	Time/Call
Adjust_Color_Palette	2	0.93	1.26	0.00	0.06	0.06	0.03
Adjust_ScrollBar	2	0.99	1.26	0.00	0.05	0.05	0.03
Adjust_Status_Bar	2	0.93	1.26	0.00	0.00	0.00	0.00
Adjust_Tool_Palette	2	0.93	1.26	0.00	0.00	0.00	0.00
Adjust_X_and_Y	73	34.77	68.60	0.00	0.05	0.16	0.00
Display_Color_Palette	2	0.82	1.98	0.11	0.11	0.22	0.11
Display_Mouse_Colors	53	1.81	53.28	0.00	0.06	2.09	0.04
Display_Mouse_Coordinates	301	1.32	69.59	0.00	0.06	1.70	0.01
Draw_Line_Or_Box	136	34.88	68.66	0.00	0.06	0.39	0.00
Extract_Colors_From_String	3	0.82	0.82	0.00	0.11	0.11	0.04
Extract_Image_And_Mask	28	6.81	67.67	0.00	0.06	0.22	0.01
All Calls:	Time	Arguments					
>> Main	0						
>> Help_File_In_Path	0						
<< Help_File_In_Path	0						
>> Form_Load	0.714						
>> Get_INI_File_Settings	0.769						
>> Menu_ColorSelection_Click	0.824	1					
>> Extract_Colors_From_String	0.824	16777215 14737632 12632319 126405					
<< Extract_Colors_From_String	0.824						
>> Extract_Colors_From_String	0.824	12632256 04210752 08421631 084380					
<< Extract_Colors_From_String	0.824						
>> Extract_Colors_From_String	0.824	08421504 00000000 00000255 000330					
>> Display_Color_Palette	0.824	Control: 0					
<< Display_Color_Palette	0.934						
<< Extract_Colors_From_String	0.934						
<< Menu_ColorSelection_Click	0.934						
<< Get_INI_File_Settings	0.934						
>> Form_Resize	0.934						
>> Adjust_Status_Bar	0.934						

Click on a function in the function list and all the calls and returns are selected:

Profile Data							
All Functions:	Calls	Firsttime	Lasttime	Mintime	Maxtime	Total	Time/Call
Pic_Undo_Click	2	9.17	64.65	0.22	0.22	0.44	0.22
Save_Settings_To_INI_File	1	72.72	72.72	0.00	0.00	0.00	0.00
Scale_Region	5	36.47	68.66	0.00	0.00	0.00	0.00
Scrl_Zoom_Change	3	0.99	1.26	0.00	0.06	0.11	0.04
Select_New_Icon	26	6.76	67.67	0.22	0.28	6.32	0.24
Set_MousePointer	301	1.37	69.59	0.00	0.06	0.77	0.00
Swap_Values	4	36.47	68.66	0.00	0.00	0.00	0.00
UnDo_Edits	2	9.17	64.65	0.22	0.22	0.44	0.22
Update_Icon	45	6.15	68.66	0.00	0.06	0.44	0.01
Update_Mouse_Colors	51	15.38	53.28	0.00	1.15	3.68	0.07
Valid_Circle	73	34.88	68.66	0.00	0.00	0.00	0.00
All Calls:	Time	Arguments					
>> Adjust_ScrollBar	0.989						
>> Scrl_Zoom_Change	0.989						
<< Scrl_Zoom_Change	0.989						
<< Adjust_ScrollBar	0.989						
<< Form_Resize	0.989						
>> Scrl_Zoom_Change	0.989						
<< Scrl_Zoom_Change	1.044						
<< Form_Load	1.044						
>> Form_Resize	1.208						
>> Adjust_Status_Bar	1.263						
<< Adjust_Status_Bar	1.263						
>> Adjust_Tool_Palette	1.263						
<< Adjust_Tool_Palette	1.263						
>> Adjust_Color_Palette	1.263						
<< Adjust_Color_Palette	1.263						
>> Adjust_ScrollBar	1.263						
>> Scrl_Zoom_Change	1.263						
<< Scrl_Zoom_Change	1.318						

The selected calls in the call list can be deleted [DEL].

Click on a call in the call list and the appropriate function will be selected in the function list:

Profile Data							
All Functions:	Calls	Firsttime	Lasttime	Mintime	Maxtime	Total	Time/Call
Adjust_Color_Palette	2	0.93	1.26	0.00	0.06	0.06	0.03
Adjust_ScrollBar	2	0.99	1.26	0.00	0.05	0.05	0.03
Adjust_Status_Bar	2	0.93	1.26	0.00	0.00	0.00	0.00
Adjust_Tool_Palette	2	0.93	1.26	0.00	0.00	0.00	0.00
Adjust_X_and_Y	73	34.77	68.60	0.00	0.05	0.16	0.00
Display_Color_Palette	2	0.82	1.98	0.11	0.11	0.22	0.11
Display_Mouse_Colors	53	1.81	53.28	0.00	0.06	2.09	0.04
Display_Mouse_Coordinates	301	1.32	69.59	0.00	0.06	1.70	0.01
Draw_Line_Or_Box	136	34.88	68.66	0.00	0.06	0.39	0.00
Extract_Colors_From_String	3	0.82	0.82	0.00	0.11	0.11	0.04
Extract_Image_And_Mask	28	6.81	67.67	0.00	0.06	0.22	0.01
All Calls:	Time		Arguments				
<< Adjust_Status_Bar	0.934						
>> Adjust_Tool_Palette	0.934						
<< Adjust_Tool_Palette	0.934						
>> Adjust_Color_Palette	0.934						
<< Adjust_Color_Palette	0.989						
>> Adjust_ScrollBar	0.989						
>> Scrl_Zoom_Change	0.989						
<< Scrl_Zoom_Change	0.989						
<< Adjust_ScrollBar	0.989						
<< Form_Resize	0.989						
>> Scrl_Zoom_Change	0.989						
<< Scrl_Zoom_Change	1.044						
<< Form_Load	1.044						
>> Form_Resize	1.208						
>> Adjust_Status_Bar	1.263						
<< Adjust_Status_Bar	1.263						
>> Adjust_Tool_Palette	1.263						
<< Adjust_Tool_Palette	1.263						

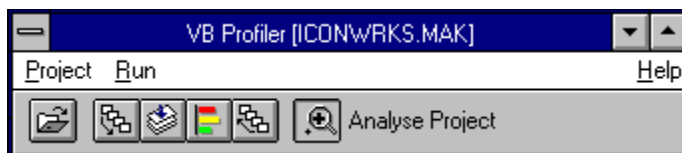
If there are more than usual calls, the calllist will be divided in several parts. With the [<<] and [>>] buttons you can load the different parts of the list.

Load more data, please wait...							
All Functions:	Calls	Firsttime	Lasttime	Mintime	Maxtime	Total	Time/Call
Adjust_Color_Palette	2	0.93	1.26	0.00	0.06	0.06	0.03
Adjust_ScrollBar	2	0.99	1.26	0.00	0.05	0.05	0.03
Adjust_Status_Bar	2	0.93	1.26	0.00	0.00	0.00	0.00
Adjust_Tool_Palette	2	0.93	1.26	0.00	0.00	0.00	0.00
Adjust_X_and_Y	73	34.77	68.60	0.00	0.05	0.16	0.00
Display_Color_Palette	2	0.82	1.98	0.11	0.11	0.22	0.11
Display_Mouse_Colors	53	1.81	53.28	0.00	0.06	2.09	0.04
Display_Mouse_Coordinates	301	1.32	69.59	0.00	0.06	1.70	0.01
Draw_Line_Or_Box	136	34.88	68.66	0.00	0.06	0.39	0.00
Extract_Colors_From_String	3	0.82	0.82	0.00	0.11	0.11	0.04
Extract_Image_And_Mask	28	6.81	67.67	0.00	0.06	0.22	0.01

All Calls:	Time	Arguments

You have to wait during to load of additional data.

You may use the tool to access this function.



Help Unknown Datatypes

If there are unknown datatypes as parameters, they are collected and can be showed here.



Help Known Problems

List of some known errors. Please check the `readme.txt` if there are some more of them or how to work around them.

Help About

You know, all the stuff about Copyright and not being distributed, duplicated, reverse engineered, thrown into fire, hit, bombed...



Thanks for using my software!

Andreas Fehr
Neudorfstr. 15
8810 Horgen
Switzerland

Index

≡
#
A
B
C
D
E
F
G
H
I
J
K
L
M
N
O
P
Q
R
S
T
U
V
W
X
Y
Z

C

[Contents](#)

H

[Help About](#)

[Help Known Problems](#)

[Help Unknown Datatypes](#)

I

[Index](#)

M

[Menus](#)

P

[Project Open](#)

[Project Preferences](#)

R

[Run Analyse](#)

Run Make EXE

Run Profile

Run Remove Stamp

Run Stamp

Project Exit

Shuts down VB Profiler

