

Index

Thank you for using the Message Box Editor for Visual Basic.

Help topics for MSGBXED are listed below. Use the scroll bar to see entries not currently visible in the Help window.

To learn to use Help press the F1 key or choose Using Help from the Help menu.

To read the help information sequentially, use the buttons labeled >> and << on the Help toolbar.

Basics

[Quick Start Information](#)

[Overview](#)

[Brief Tutorial](#)

[Upgrades](#)

[Copyright/License/Warranty](#)

[Acknowledgments](#)

System Requirements, Installation, and Uninstallation

[System Requirements](#)

[MSGBXED files](#)

[MSGBXED installation](#)

[MSGBXED uninstallation](#)

Registration

[Order Form](#)

Using Message Box Editor for Visual Basic

[Main Menu](#)

[File Menu](#)

[Options Menu](#)

[Help Menu](#)

[Main Dialog](#)

[Button Bar](#)

Note on Message Boxes

[System Modal Messages](#)

[Message Length](#)

For Help on Help, Press F1

Quick Start Information

If you have used other Windows applications you should be able to use MSGBXED with little or no problem and possibly without reading all the documentation. However, this help file was constructed to offer you additional information if you experience trouble in using the MSGBXED.

Press the F1 key at any time while running MSGBXED to access a complete context sensitive help. To learn how to use the on-line help system choose How to Use Help from MSGBXED's Help menu.

Overview

The Message Box Editor (MSGBXED) is a simple-to-use program that allows you to create the message box you wish to present to the operator of your Visual Basic application. You can select all of the parameters that comprise the message box to include such items as its icon, title, message, and modal properties. Once you have entered/selected all of the parameters, you can view the message box as the operator of your software would. Once you are satisfied with your message box, the Message Box Editor will paste the Visual Basic source code necessary to define the message into the Windows' clipboard. Additionally, you are able to determine if you wish the resulting source code to support a function or a subroutine message box initialization.

Although the MSGBXED is extremely useful for beginner Visual Basic software developers, even the most experienced programmer will find it useful. Often the numerous parameters for defining a message box are easy to forget and require referencing either the Visual Basic help file or the documentation. The MSGBXED will remove that need. Additionally, since the MSGBXED will create the source code necessary to display the message box, development time can be saved.

Features

Features designed into the Message Box Editor include the ability to:

- 1) save the last configured message box,
- 2) handle multiple lines and tabs in your message,
- 3) parse your message into multiple lines of source code thereby avoiding lengthy wrap-around text,
- 4) view the resulting message box as the operator of your application will,
- 5) instruct the MSGBXED to create function or subroutine source code, and
- 6) display context sensitive on-line help.

MSGBXED is distributed as Shareware. This means that users are encouraged, subject to restrictions described in the [License Agreement](#), to share copies of the evaluation version of MSGBXED with friends, associates and bulletin boards. Please remember that if you use MSGBXED you are required to pay the registration fee of \$12.95 as described in the section titled [Copyright/License Agreement/Warranty](#).

Copyright/License/Warranty

MSGBXED® Copyright © 1995 by James Durocher.
All rights reserved.

License Agreement

You should carefully read the following terms and conditions before using this software. Unless you have a different license agreement signed by the developer your use of this software indicates your acceptance of this license agreement and warranty.

Shareware Version

Evaluation and Registration

This is not free software. You are hereby licensed to use this software for evaluation purposes without charge for a period of 30 days. If you use this software after the 30 day evaluation period a registration fee of \$12.95 is required. Payments must be in US dollars drawn on a US bank, and should be sent to James Durocher, 5140 Farm Ridge Place, Colorado Springs, CO 80917. When payment is received you will be sent a registered copy of the latest version of MSGBXED. For your convenience, you can access the registration form from the [Help/Registration menu](#) option.

Once registered, all of the reminders to register the MSGBXED will be removed and thus not displayed while you execute the program.

Unregistered use of MSGBXED after the 30-day evaluation period is in violation of U.S. and international copyright laws.

Distribution

Provided that you verify that you are distributing the Shareware Version (select About from the MSGBXED Help menu to check) you are hereby licensed to make as many copies of the Shareware version of this software and documentation as you wish; give exact copies of the original Shareware version to anyone; and distribute the Shareware version of the software and documentation in its unmodified form via electronic means. There is no charge for any of the above.

You are specifically prohibited from charging, or requesting donations, for any such copies, however made; and from distributing the software and/or documentation with other products (commercial or otherwise) without prior written permission

Registered Version

One registered copy of MSGBXED may either be used by a single person who uses the software personally on one or more computers, or installed on a single workstation used non-simultaneously by multiple people, but not both.

You may access the registered version of MSGBXED through a network, provided that you have obtained individual licenses for the software covering all workstations that will access the software.

Disclaimer of Warranty

THIS SOFTWARE AND THE ACCOMPANYING FILES ARE SOLD "AS IS" AND WITHOUT WARRANTIES AS TO PERFORMANCE OF MERCHANTABILITY OR ANY OTHER WARRANTIES WHETHER EXPRESSED OR IMPLIED. Because of the various hardware and software

environments into which MSGBXED may be put, NO WARRANTY OF FITNESS FOR A PARTICULAR PURPOSE IS OFFERED.

Good data processing procedure dictates that any program be thoroughly tested with non-critical data before relying on it. The user must assume the entire risk of using the program. ANY LIABILITY OF THE SELLER WILL BE LIMITED EXCLUSIVELY TO PRODUCT REPLACEMENT OR REFUND OF PURCHASE PRICE.

Visual Basic, Microsoft Word, and Microsoft Windows are registered trademarks of the Microsoft Corporation

Brief Tutorial

This section provides a brief tutorial on basic MSGBXED operations. [To print the tutorial, click on Print Topic in the Help window's.](#)

File pull-down menu. The tutorial assumes the following:

- Your system meets the requirements described in the section titled System Requirements and you have installed MSGBXED as described in the section titled MSGBXED Installation.
- You know how to use standard Windows features, such as dialog boxes, and menus. If you are not are familiar with these features, please consult your Windows documentation.

Remember that context sensitive help is always available. Press the F1 key at any time to access the full documentation.

If you are new to the Windows on-line help system be sure to choose How to Use Help from MSGBXED's Help menu. The time you spend on that will pay off quickly!

Once you enter the MSGBXED you are presented with the main interface dialog that allows you to define your message box. You are able to identify all of the characteristics that define the message box to include the icon, message title and content, command buttons available, default button selection, etc. For many of the characteristics, default selections are already made. Simply fill in the missing information (i.e., message title and text), and press the View Button or execute the File/View menu option.

You can make changes to any of the configuration parameters that you wish. When you believe your message box is complete, you can copy the Visual Basic source code into the Windows' clipboard by pressing the Clipboard Button or executing the File/Copy/Message Box menu option.

Upgrades

There are two ways to upgrade a registered copy of an earlier version of MSGBXED:

Free upgrade: You can use your license file provided to you when you registered your original copy of MSGBXED so that the new Shareware evaluation version can be modified to a registered version that does not display the initial registration reminder dialog box and messages. *Note: the policy of free updates will continue for minor improvements, but in the future there will most likely be a charge for major upgrades.* Everyone that registered earlier versions of MSGBXED should already have received a license file. If you have not received a license file you can obtain one by writing to the address in the MSGBXED About dialog box and another license file will be provided either electronically (at no charge) or via mail (minor charge for shipping and handling). Be sure to include your name as it appeared on your original MSGBXED order form.

System Requirements

The MSGBXED executable only requires that you have the files installed during the setup process as well as Microsoft Windows 3.1 (or above) or Microsoft Windows for Workgroups 3.11 (or above). In support of the spelling feature of MSGBXED, Microsoft Word 6.0 is necessary. Although distributed with MSGBXED when ordered on a floppy diskette, electronic distribution does not include the VBRUN300.DLL. This file is necessary for Visual Basic 3.0 and can be obtained from Microsoft, or most bulletin boards.

MSGBXED-Related Files

<u>Filename</u>	<u>Description</u>
README.WRI	introductory information
LICENSE.WRI	license agreement/warranty
MSGBXED.HLP	documentation in on-line hypertext help format
MSGBXED.EXE	required executable
VBRUN300.DLL	required dynamic link library
VENDOR.TXT	information for Shareware Distributors and Disk Vendors
SETUP.EXE	installation program
THREED.VBX	required support file
INICON2.VBX	required support file

MSGBXED Installation

To install MSGBXED follow one of these procedures:

- 1) Either from DOS or from the Windows Program Manager, copy the MSGBXED files into a directory of your choosing.
- 2) Move the VBX files distributed with MSGBXED to your Windows\System directory.

The MSGBXED is now ready to run....

MSGBXED Uninstallation

To uninstall MSGBXED simply delete the directory and its files that you installed the MSGBXED. In addition to the MSGBXED support files, you should remove the Windows' group.

Order Form

MSGBXED® Registration Form/Invoice

Ordering by check: To order by check send this order form and a check to:

James Durocher
5140 Farm Ridge Place
Colorado Springs, CO 80917

To print this order form, click on [Print Topic in the File menu](#).

Payments must be in US dollars drawn on a US bank, or you can send international postal money orders in US dollars.

CompuServe Registration: To have the registration fee added to your CompuServe bill type GO SWREG at the ! prompt and follow the menus.

3.5 inch disks are sent unless a 5.25 inch disk is requested.

MSGBXED Single Copy _____ copies at \$12.95 each
5 or more at \$10.00 each = _____

Shipping and Handling + \$1.95

Total payment _____

Prices guaranteed through July, 1995.

Name: _____ Date: _____

Company: _____

Address: _____

City, State, Zip: _____

Country: _____

Day Phone: _____ Eve: _____

Electronic Mail address: _____

How did you hear about MSGBXED? _____

Comments:

Acknowledgments

I would like to acknowledge the support received from the Beta testers who offered to help evaluate and provide comments relating to the design and operation of the MSGBXED.

Main Menu



The main menu offers you a number of features. Although some of these features are available to you via the button bar, they are repeated in the main menu for your convenience. For additional information, please see File, Options, Help menu descriptions.

The Message Box Editor menu bar includes the names of the menus you can use in the window.

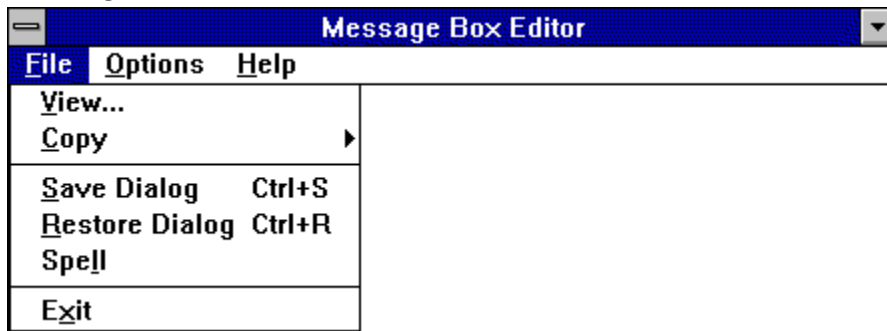
To open a menu and display its commands, click the menu name or press the access key.

To choose a command once you've opened a menu, click the command name or press the access key. If there is a shortcut key for a command, it is indicated on the menu next to the command name.

Commands followed by an ellipsis (...) display a dialog box where you provide more information before the command is executed.

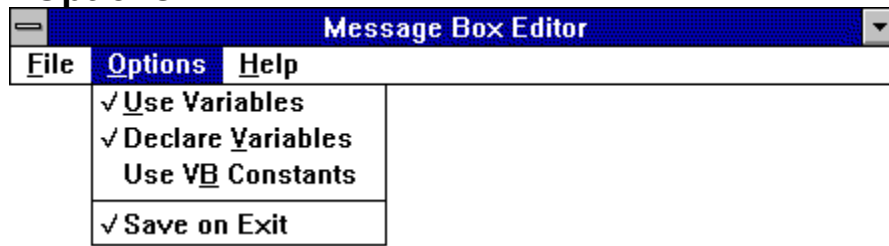
Closing the menu bar also closes the Message Box Editor.

File



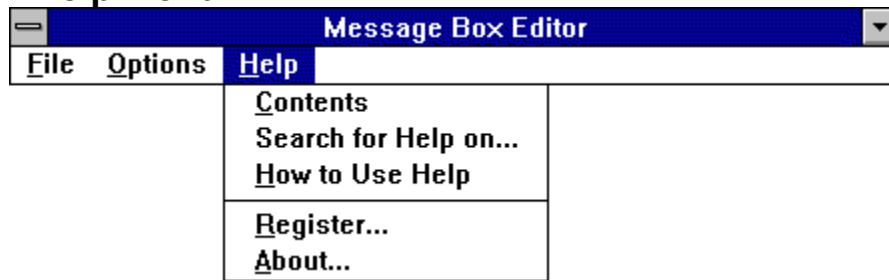
The file menu offers you the ability to view the currently defined message box, copy the message box to the clipboard, copy the Visual Basic declaration statements to the clipboard, save the currently defined message box, restore a previously defined message box, perform spell checking on the message, and exit the MSGBXED application.

Options



The options menu offers you the ability to configure a number of options available for you while using the MSGBXED. All of the parameters available to you under this menu have checks associated with them that indicate if the parameter is currently selected. Your configuration will be saved in the MSGBXED initialization file upon exiting the application. You are able to define if the MSGBXED will use variables, if the MSGBXED should declare variables in the source code, use Visual Basic constants, and whether to save the currently configured message box upon termination of the MSGBXED. The MSGBXED uses variables for the message title, message text, and the code used by Visual Basic to define the properties of the message box (e.g. icon, buttons, modality).

Help Menu



The MSGBXED provides you with a number of help menu options to include Contents, Search Help , How to Use Windows help , Register , About . *Please note that once you have registered the MSGBXED, this menu option will no longer appear.*

Search Help

The MSGBXED help file, via the features provided by Windows' help system, offers you the ability to search the help file for numerous items of interest.

How to Use Help

The MSGBXED offers you the ability to display Microsoft's help file to provide you help on using the Windows' help system.

Register

Since the MSGBXED is distributed as a shareware product, you are provided the opportunity to register your version. To assist you in this matter, the MSGBXED will allow you to enter pertinent information and print the registration form. *Please note that once registered, this menu option is no longer displayed.*

About

Once pressed, the MSGBXED will provide you some general information such as the product name, version number, and developer's address.

Use Variables

The MSGBXED allows you to determine if the resulting source code for the message box uses variables. If not using variables, the MSGBXED will use constants. Most applications programmers like to use variables and avoid any constant declarations. The resulting source code is typically easier to read if variables are used.

Declare Variables

If you have chosen to use variables when the MSGBXED generates the source code for your message box, you will be given the option to declare the variables used. It is customary to declare the variables used in your project. It is important to note that you will not be able to select this menu item if the Use Variables menu option is not checked.

Visual Basic Constants

The MSGBXED allows you to determine if the resulting source code for your message box references constant declarations provided by Visual Basic. Many software programmers have come accustomed to using Visual Basic declarations and would prefer that the message boxes generated by the MSGBXED take advantage of the common constants. For your convenience, the MSGBXED will copy these constant declarations into the clipboard for your use in your global BAS file. For additional information on copying the constant declarations into the clipboard, please see the [File menu](#).

Save on Exit

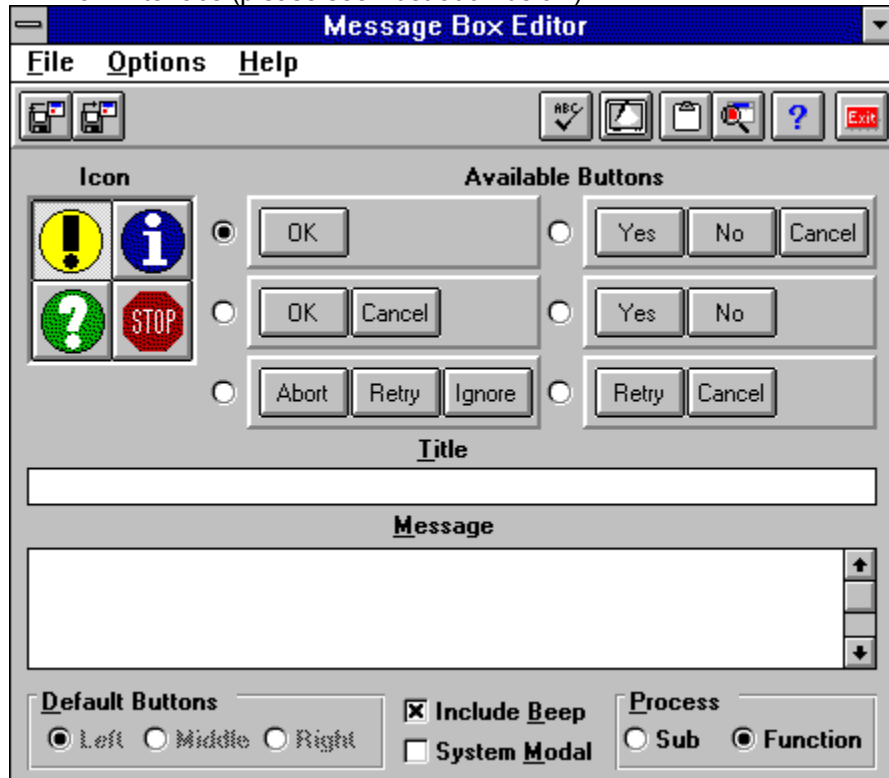
The MSGBXED allows you to save the currently configured message box to the initialization file . This permits the MSGBXED, when executed, to bring up the last configured message box. Quite often, you will find that your message boxes share common configurations. By bringing in the last configured message box, time is saved on your behalf and the resulting messages will be more consistent.

Visual Basic Declarations

The MSGBXED allows you to copy the message box Visual Basic global declaration statements into the clipboard. Once available in the clipboard, the global declarations can be placed in your application's global BAS file. Symbolic constants for all message box definitions can be found in the Visual Basic file CONSTANT.TXT. When placed in any module in a project, the symbolic names can be used in all your form and code modules.

Main Dialog

You will be able to define your message box by configuring the various parameters available on the main interface (please see illustration below).



As you can see from the illustration above, all of the parameters necessary for you to define a Visual Basic message box are available to you in the main window. Items to select include the Icon, Buttons to include selecting the default button, Message Title and Text, Modal characteristics. Additionally, you can define whether your message box will beep the operator when displayed by your project and whether the resulting code produced by the MSGBXED will be in the form of a subroutine or a function.

Button Bar

The MSGBXED was designed to incorporate button bar technology. The emphasis with this design is to offer the operator easy reference to the most commonly used functions. The illustration that follows is a picture of the button bar available in MSGBXED.



For more information on each of the buttons available in the button bar, please see:

Save
Load
Spell
Clear Message
Clipboard
View
Help
Exit

Save



The save button permits you to save the currently defined message box configuration to the MSGBXED initialization file .

Load



The load button permits you to retrieve a previously defined message box configuration from the MSGBXED initialization file .

Spell



The spell button allows you the ability to perform spell checking of your message. It is important to note that this feature is provided to you only if Microsoft Word 6.0 is available on your system. If you attempt to spell check your message without having Word 6.0, an error message will be displayed and the button will be disabled.

Clear Message



By pressing the clear button, you will be able to reset the message box interface such that the message and the title are cleared and the icon and button response options are reset to their default configuration.

Clipboard



The clipboard button permits you to copy the currently defined message box into the Windows' clipboard as Visual Basic source code.

View



By pressing the View button, the MSGBXED will display the currently defined message box to you.

Help



The help button allows you to view the contents of this file using the Windows' help system.

Exit



The exit button allows you to terminate the operation of the MSGBXED application.

Initialization File

Most Windows applications use a DOS formatted ASCII file to store various configuration parameters. This file is often referred to as the INI file. The MSGBXED's INI file is maintained in the Windows directory. In addition to providing a storage/retrieval location for some of the MSGBXED's configuration parameters, it contains the configuration of the message box.

System Modal Messages

It is important to note that if you define a message box that contains the stop sign icon and is system model , you are only permitted to display up to three lines containing the actual message plus one line for the message box title.

Message Length

Some notes on the length of your message.

For application modal message boxes, MsgBox displays a maximum of 1024 characters. Longer messages are truncated after the 1024th character. Message strings longer than 255 characters with no intervening spaces are truncated after the 255th character. For system modal message boxes, the number of characters you can display depends on screen resolution and whether or not the string to be displayed is on one or more lines.

System Modal

All applications are suspended until the user responds to the message box.

Application Modal

The user must respond to the message box before continuing work in the current application.