



ErrorHandler

[What is ErrorHandler](#)

[Opening a MAK](#)

[Adding Error Code to MAK](#)

[Closing a MAK](#)

[Printer Setup](#)

[Exiting](#)

[Listing Subs/Functions in a BAS/FRM](#)

[Printing/Viewing a Subs/Function](#)

[Generate Error](#)

[Error Help](#)

[Adding Error Code to MAK](#)

[example](#)

[Rules when using EH](#)

[An Error occurs with Eh](#)

[Editing MAKE.LOG](#)

[Customizing EH code](#)

LEGAL ISSUES

[Copyright](#)

[Liability](#)

[Ordering](#)

[Technical Support](#)

What is ErrorHandler ?

EH is a VB development tool, it will work through your applications adding error handling code to every procedure. The main benefit of using EH is TIME.

eg. A professional VB programmer might take :

- 60 seconds to insert error handling code into an sub or function.
- Add say 2 hours to write a BAS procedure to handle error calls.
- And finally add 1 hours to test.

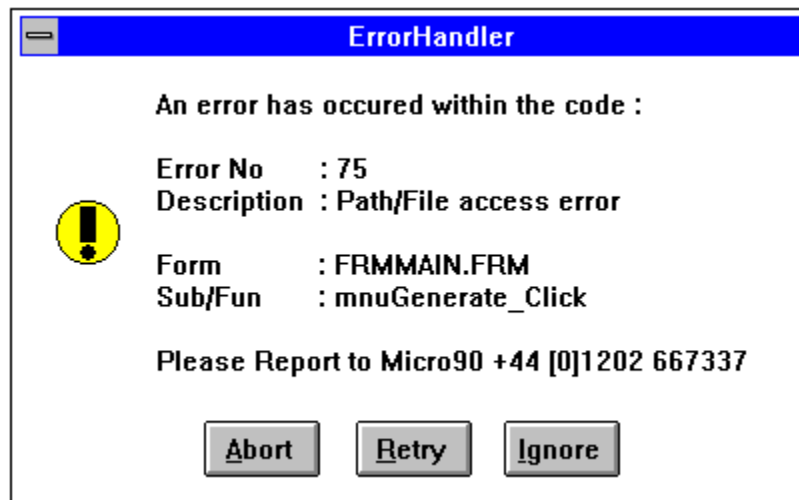
● On a medium application with 600 Subs & Functions this process will take upto **13 hours**.
EH will do the same task in **under 2 minutes**.

Errors WITHOUT EH

If no error handling code is in your application, your application will crash if an error occurs.

Errors WITH EH

If an error occurs in code using EH, your user will be informed of the Error, Its position, instructions will be given to report the error (if required) and finally details of the error will be wrote to a ERROR.LOG file.





Opening a MAK

To open a MAK file for viewing or adding error code either :

- 1) Select Open from the File menu,
- 2) Click on the Open button on the Screen.
- 3) Press CTRL+O on the keyboard.

This will cause a common dialog box to appear, using this file open box select the MAK file you wish to use.

Once your MAK file is loaded all BAS and FRM files are listed under .MAK list.

Closing a MAK

To Close a MAK file select Close from the File menu.

This will cause you MAK file to be unloaded.



Select Exit from the File menu

If you did not close your MAK file no damage will be done.

Listing Subs/Functions in a BAS/FRM

To list all the Procedures under a BAS or FRM file either.

- 1) From the .MAK list list box. select a BAS or FRM and click on the ----> button.
- 2) Double click on a file in the .MAK list

This will cause a list of all Functions or Subs in a BAS or FRM to be listed under Subs/Function list

Printing/Viewing a Sub or Function

It is possible to both view and print a selected Sub or Function.

TO VIEW

Having listed all Subs or Function either

- 1) Double click on the required Sub or Function
- 2) Select Browse from the Options menu.

This will cause a text box to appear listing the selected Sub or Function

The Copy buttons will copy the text to the clipboard for pasting into a VB application.
The Close button will close the text box window.

TO PRINT

Having listed all Subs or Function either :

- 1) Select Print from the File Menu.
- 2) Enter the number of copies to print and Click Print

All printouts are done in landscape.

Print Setup

To adjust the printer from within EH select Print Setup fromt the File menu.

A common dialog printer setup box will appear.

Error Help

To get an instant description of an error number either

- 1) Select Error Help... from the Options menu.
- 2) Press CTRL+E on the keyboard

A Error Help window will appear

Enter the error number in the white box and Click Get Error, the appropriate error description will be displayed below.

Click on close to exit this feature.

Generate Error


To test EH select Generate Error... from the Options menu.


An input box will ask you to enter an error number.

This will automatically cause that error to be simulated.

An Error Occurs with EH

A box will appear informing the user an error has occurred. this box will displaying

 Error Number

 Description

 Form Name

 Sub/Function Name

 Ccontact number



Your user will be given the choice of selecting either

 ABORT

This will cause an Exit Sub command to occur

 RETRY

Retry the command or event

 IGNORE

Ignore the command and skip to the next line of code

If the error persists more than n times, An alternative box will appear asking the user if they wish to quite the software application.



 YES

this will exit the application



NO
will retry the command.

Edit MAKE.LOG

The MAKE.LOG is a text file compiled during the process of adding error code. the file is stored in the EH application directory, and is overwritten every time you run the Add Error Code to MAK... option.

NotePad is loaded with the MAKE.LOG file automatically opened. If you MAKE.LOG file is too long you may be to use an alternative editor.

Add Error Code to MAK...

This option will work through the MAK file you have loaded adding error code to your application.

BACKUP YOUR MAK FILE BEFORE USING THIS OPTION.

Before starting you are asked to confirm your selection.

EH works in 2 passes, Firstly the system checks out your project and reports any problems, secondly it will add code to your project.

PASS 1

This pass will test to make sure all parts of the MAK are saved as text, it will also look for any EH code or User error code in place. If any part of your application was not saved as text you will not be able to proceed onto PASS 2. If Any parts of your code already have User error handling code (ie. Code you have added your self), you will be given the choice bypassing these procedures when adding EH code.

PASS 2

This pass will rename all your existing BAS or FRM files, One by One it will re-write them adding EH code where necessary.

This pass will also add M90ERROR.BAS to your application. DO NOT DELETE IT.

2 sliding status bars will track the progress of EH whilst processing the above 2 passes.

ERROR.LOG

This is a text file built when running the above passes, it will provide a log of what the EH compiling process does. Remember that this log file is overwritten every time you run this process.



Example of what EH will adds to your code

```
Sub mnuGenerate_Click ()





On Error GoTo m90EH_mnuGenerate_Click:

'M90ERRORHANDLER <<< DON'T DELETE ME
Exit Sub
m90EH_mnuGenerate_Click:
    gs_m90EH_Formname = "FRMMAIN.FRM"
    gs_m90EH_Procname = "mnuGenerate_Click"
    gi_m90EH_Putlog = True

Select Case (gfi_M90ErrorHandler(gs_m90EH_Formname,
gs_m90EH_Procname,gi_m90EH_Putlog))
    Case 3
        'abort
        Exit Sub
    Case 4
        'retry
        Resume
    Case 5
        ignore
        Resume Next
End Select

End Sub
```

RULES when using EH

-  All BAS or FRM files must have been saved as text
-  All End Sub or End Function statements must be in the first column (left hand side of window)
-  Dont delete 'M90ERRORHANDLER <<< DON'T DELETE ME where you see it in your code.
-  Dont delete or change any Declarations , Functions or Subs in M90ERROR.BAS.



Customising EH code

It is possible to customize some parts by changing the below constants in the M90ERROR.BAS file.

```
'INTERNATIONALIZATION
Global Const gs_M90EH_dateformat = "DD/MM/YYYY"
Global Const gs_M90EH_timeformat = "hh:nn ss"

'localization
Global gs_m90EH_AppPath As String

'msgbox titles
Global Const gs_m90EH_title = "ErrorHandler"
Global Const gs_m90EH_contact = "Please Report to Micro90 +44 [0]1202 667337  "
Global Const gs_m90EH_application = "ErrorHandler for VB 3.0"
```

Technical support

You can obtain technical support from :

Micro90
First Floor
Hamworthy House
New Quay Road
Poole
Dorset
BH16 5LP
ENGLAND

Telephone	+44 [0]1202 667337
Fax	+44 [0]1202 665609

Compuserve	100534,1100
Internet	micro90@bournemouth-net.co.uk

Office Mobile	0585 172782
---------------	-------------



Copyright notice

READ CAREFULLY, USAGE OF THIS SOFTWARE MUST DEPEND ON ACCEPTANCE OF THESE TERMS

(c) ErrorHandler . Copyright Micro90, 1995.
All rights reserved

SHAREWARE VERSION

Evaluation and Registration



This is not free software. You are hereby licensed to use this software for evaluation purposes without charge for a period of 21 days. If you use this software after the 21 day evaluation period a registration fee is required. Payments should be sent to Micro90, First Floor, Hamworthy House, New Quay Road, Poole, Dorset, BH15 4AD, ENGLAND . For cost see : [Ordering ErrorHandler](#)



Unregistered use of ErrorHandler after the 21 day evaluation period is in violation of International copyright laws.

Distribution



Provided that you verify that you are distributing the Shareware Version (see front title screen for wording Shareware Version) you are hereby licensed to make as many copies of the Shareware Version of this software and documentation as you wish; give exact copies of original Shareware version to anyone, and distribute the Shareware version of the software and documentation in its unmodified form via electronic means. There is no charge for any of the above.



You are specifically prohibited from charging, or requesting donations for any such copies, however made, and from distributing the software and/or documentation with other products (commercial or otherwise) without prior written permission.

REGISTERED VERSION



One registered copy of ErrorHandler may either be used by a single company or individual on a standalone machine.



Micro90 reserve the copyright of the ErrorHandler software which is not to be copied , Reproduced or Disclosed to a third party without the prior written consent of Micro90.

MICRO90 ACCEPT NO LIABILITY FOR ANY DATA LOSS, CLAIMS, FINES OR ANY OTHER KIND OF PENALTY INCURRED BY THE USER

4th Sept 1995

Micro90
First Floor

Hamworthy House
New Quay Road
Poole
Dorset
BH15 4AD
ENGLAND



READ CAREFULLY, USAGE OF THIS SOFTWARE MUST DEPEND ON ACCEPTANCE OF THESE TERMS

4th Sept 1995

The ErrorHandler software system has been carefully designed, compiled and checked for technical accuracy. Micro90 accept no liability for inaccuracies or errors. resultings from either ErrorHandler or Incorrect/incompatiable operational usage of peripheral hardware,software.Comments or correspondence regarding the ErrorHandler software system and help files should be addressed to :

Micro90
First Floor
Hamworthy House
New Quay Road
Poole
Dorset
BH15 4AD
ENGLAND

No Refunds will be given if the READ CAREFULLY seal on the disk envelope is broken.
No Refunds will be given for Instant Registrations.

MICRO90 ACCEPT NO LIABILITY FOR ANY DATA LOSS,CLAIMS,FINES OR ANY OTHER KIND OF PENALTY INCURRED BY THE USER

Ordering ErrorHandler

4th Oct 1995



If you wish to use ErrorHandler, you must register the software . This will entitle you to technical support.

To Order simply print this form, fill in the details and send with payment to the address below.

Cost

ErrorHandler Order Form _____

Name	_____
Company	_____
Address	_____

Country	_____
Email	_____
Tel	_____
Fax	_____
Line of business	_____ VAT/TAX No. _____



The latest version of ErrorHandler will be despatched within 21 day of receipt of order/payment.



Your details will be stored by Micro90 to be used to inform you of Micro90 products. Please tick here _____ if you do not wish your details to be disclosed to a third party.

SEND TO:

Micro90 (Shareware Registration)
First Floor
Hamworthy House
New Quay Road
Poole
Dorset
BH15 4AD
ENGLAND.

Cost

Simply write a Cheques made payable to Micro90

UK = £75.00

USA = \$99.99

Canada=\$ 149.99

(Micro90 reserve the right to change this price without notification)

 IF YOU ARE A VAT REGISTERED COMPANY WITHIN THE EC (NOT UK) AND YOU PROVIDE US WITH A VALID VAT NUMBER NO VAT WILL BE CHARGED.

