

SAMPLE

This is a simple Visual Basic application used to demonstrate the capabilities of Vision StoryBoard. This application is used in the Vision StoryBoard User's Guide.

- | | | |
|----|---------------|---------|
| 1. | Support Forms | (Group) |
| 2. | Customer | (Form) |
| 3. | Order | (Form) |
| 4. | Product | (Form) |

This form group contains the application forms that are used as the starting point or provide only information.

- | | | |
|----|-------|--------|
| 5. | Main | (Form) |
| 6. | About | (Form) |

7.

8.

9.

10. Form service as initial form and provides information about the features of Vision StoryBoard.

11.



12.

13.

14. #	15. Name	16. Type	17. Description
18. 1	19. Main	20. Form	21. Form service as initial form and provides information about the features of Vision StoryBoard.
22. 2	23. QuitApp Button	24. CommandButton	25. End the running of the application and close all associated windows.
26. 3	27. Continue Button	28. CommandButton	29. Dismiss the current window and display the Customer form for order entry.
30. 4	31. Label2(2)	32. Label	33.
34. 5	35. Label2(1)	36. Label	37.
38. 6	39. Label2(0)	40. Label	41.
42. 7	43. Label1	44. Label	45.
46. 8	47. GenerateImage	48. Image	49.
50. 9	51. SpecMakerImage	52. Image	53.
54. 10	55. SlideShowImage	56. Image	57.

58.	11	59. welcome box	60. Label	61.
62.	12	63. Menutop (1)	64. Menu	65. Provides menu options that display the application forms.
66.	13	67. cusopt(1)	68. Menu	69. Present the Customer form in read-only mode. Provide a popup window to close form.
70.	14	71. prodopt(2)	72. Menu	73. Present the Product form in read-only mode. Provide a popup window to close form.
74.	15	75. orderopt(3)	76. Menu	77. Present the Order form in read-only mode. Provide a popup window to close form.
78.	16	79. aboutmenu(2)	80. Menu	81. Provide application information.

82.

83.

84.

85. 1. Main

86.

87. Requirements

88.

91. Functional Description

92.

95. End-user Documentation Notes

96.

89. Display as the first form in the application. Two active buttons and a menu bar for viewing forms.

90.

93. Form service as initial form and provides information about the features of Vision StoryBoard.

94.

97. This is the first form in the application.

98.

99.

100.

101. 2. QuitAppButton

102.

103. Requirements

104.

107. Functional Description

108.

111. Design Information

112.

115. Testing Information

116.

119. End-user Documentation Notes

120.

105. Cleans up all running processes and releases dlls.

106.

109. End the running of the application and close all associated windows.

110.

113.

114.

117.

118.

121. Stop the application and closes all windows.

122.

123.

124.

125. 3. ContinueButton

126.

127. Requirements

128.

129. Always be active.

130.

131.	Functional Description	133.	Dismiss the current window and display the Customer form for order entry.
132.		134.	
135.	Design Information	137.	
136.		138.	
139.	Testing Information	141.	
140.		142.	
143.	End-user Documentation Notes	145.	Displays the Customer form for customer data entry, change, or deletion.
144.		146.	
147.			
148.			
149.	4. Menutop(1)		
150.			
	151.	153.	First menu item on the menu bar.
	152.	154.	
	155.	157.	Provides menu options that display the application forms.
	156.	158.	
	159.	161.	The Forms menu allows you to view each of the application form. To close the form click on OK in the popup window.
	160.	162.	
163.			
164.			
165.	5. cusopt(1)		
166.			
	167.	169.	
	168.	170.	
	171.	173.	Present the Customer form in read-only mode. Provide a popup window to close form.
	172.	174.	
	175.	177.	Displays the Customer form with data entry disabled.
	176.	178.	
179.			
180.			
181.	6. prodopt(2)		
182.			
	183.	185.	
	184.	186.	
	187.	189.	Present the Product form in read-only mode. Provide a popup window to close form.
	188.	190.	
	191.	193.	Displays the Product form with data entry disabled.
	192.	194.	
195.			
196.			
197.	7. orderopt(3)		
198.			
	199.	201.	
	200.	202.	
	203.	205.	Present the Order form in read-only mode. Provide a popup

211. Description window to close form.
 212. 204. 206.
 213. 207. End-user 209. Displays the Orders form with data entry disabled.
 214. Documentation Notes 210.

211.
 212.
 213. **8. aboutmenu(2)**
 214.

215. Requirements 217.
 216. 218.
 219. Functional 221. Provide application information.
 Description 222.
 220.
 223. End-user 225. Display the application About Box.
 Documentation Notes 226.
 224.

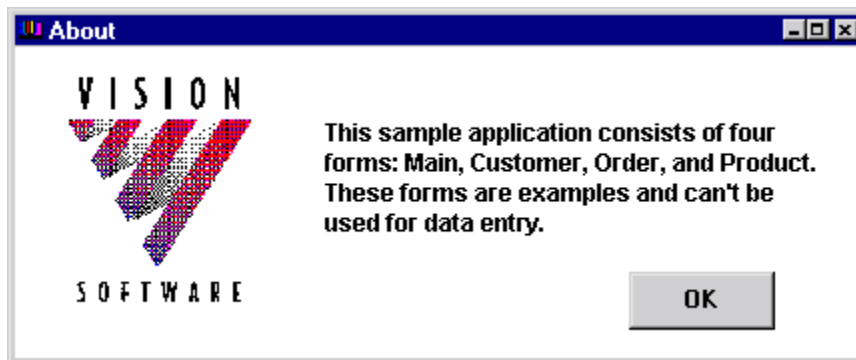
227.

228.

229.

230. Provides information about the sample Vision StoryBoard application.

231.



232.

233.

234. #	235. Name	236. Type	237. Description
238. 1	239. About	240. Form	241. Provides information about the sample Vision StoryBoard application.
242. 2	243. OKButton	244. CommandButton	245. Dismisses the current window.
246. 3	247. InfoLabel	248. Label	249.
250. 4	251. CorpLogoImage	252. Image	253.

254.

255.

256.

257. **1. About**

258.

259. Requirements

260.

263. Functional
Description

264.

267. End-user
Documentation Notes

268.

261. Images no more than 16 color.

262.

265. Provides information about the sample Vision StoryBoard
application.

266.

269. Vision StoryBoard information.

270.

271.

272.

273. **2. OKButton**

274.

275. Requirements

276.

279. Functional
Description

280.

283. Design
Information

284.

287. Testing
Information

288.

291. End-user
Documentation Notes

292.

277. Hide and release current window.

278.

281. Dismisses the current window.

282.

285.

286.

289.

290.

293. Closes the About box.

294.

295.

296.

297.

298. To allow user to add, change, and delete customer information. And, view all customer
orders.

299.

300.

301.

302. #	303. Name	304. Type	305. Description
306. 1	307. Customer	308. Form	309. To allow user to add, change, and delete customer information. And, view all customer orders.
310. 2	311. Frame1	312. Frame	313.
314. 3	315. Grid1	316. Grid	317. To present a history of all customer orders placed.
318. 4	319. SaveButton	320. CommandButton	321. To save all changes and addition to the database.
322. 5	323. NextCustomerButton	324. CommandButton	325. To display the next customer record in the set.
326. 6	327. PrevCustomerButton	328. CommandButton	329.
330. 7	331. OrderDetailButton	332. CommandButton	333. To display the Orders form with additional information about the selected order number.
334. 8	335. CloseButton	336. CommandButton	337. To close the window without saving any changes made.
338. 9	339. CustomerAddressBox	340. TextBox	341.
342. 10	343. CustomerIDBox	344. TextBox	345. To allow new customer entry and deletion. Search criteria can be entered in this field.
346. 11	347. CustomerNameBox	348. TextBox	349. To display the customer's name and provide a secondary method of record retrieval.

350.	12	351.	Label3	352.	Label	353.
354.	13	355.	Label2	356.	Label	357.
358.	14	359.	Label1	360.	Label	361.
362.	15	363.	DBmenu	364.	Menu	365.
366.	16	367.	findopt	368.	Menu	369.
370.	17	371.	addopt	372.	Menu	373.
374.	18	375.	delopt	376.	Menu	377.
378.	19	379.	recmenu	380.	Menu	381. Provides menu options that display the application forms.
382.	20	383.	clearopt	384.	Menu	385.
386.	21	387.	helpmenu	388.	Menu	389.

390.

391.

392.

393. 1. Customer

394.

395. Requirements
396.

399. Functional
Description

400.

403. End-user
Documentation Notes
404.

397. Use as the first data entry form in the application. Provide movement to the next logical form, ability to save changes, and a close function. Provide record set scrolling.

398.

401. To allow user to add, change, and delete customer information. And, view all customer orders.

402.

405. This form allows you to add, modify, and delete customer information in the database. You can display detailed order information by selecting a order number and clicking on the See Order Details button.

406.

407.

408.

409. 2. Grid1

410.

411. Functional
Description

412.

415. End-user
Documentation Notes
416.

413. To present a history of all customer orders placed.

414.

417. To get more information about an order, select a number from the grid and click on the See Order Details button.

418.

419.

420.

421. 3. SaveButton

422.

423. Requirements
424.

427. Functional
Description

428.

431. Design
Information

432.

435. Testing

425. Save all data changes.

426.

429. To save all changes and addition to the database.

430.

433.

434.

437.

Information	438.	
436.		
439. End-user	441.	Saves all data changes made to customer name and
Documentation Notes	address.	
440.	442.	
443.		
444.		
445. 4. NextCustomerButton		
446.		
447. Requirements	449.	Maintain record set order.
448.	450.	
451. Functional	453.	To display the next customer record in the set.
Description	454.	
452.		
455. Design	457.	
Information	458.	
456.		
459. Testing	461.	
Information	462.	
460.		
463. End-user	465.	Click for the next customer record.
Documentation Notes	466.	
464.		
467.		
468.		
469. 5. PrevCustomerButton		
470.		
471. Requirements	473.	
472.	474.	
475. Functional	477.	
Description	478.	
476.		
479. Design	481.	
Information	482.	
480.		
483. Testing	485.	
Information	486.	
484.		
487. End-user	489.	Click for the previous customer record.
Documentation Notes	490.	
488.		
491.		
492.		
493. 6. OrderDetailButton		
494.		
495. Requirements	497.	Execute a order query and display the Order form with the
496.	correct data.	
	498.	
499. Functional	501.	To display the Orders form with additional information about
Description	the selected order number.	
500.	502.	
503. Design	505.	
Information	506.	
504.		
507. Testing	509.	

	Information	510.	
	508.		
	511. End-user	513.	Displays all order details for the order that you selected in
	Documentation Notes		the grid.
	512.	514.	
515.			
516.			
517.	7. CloseButton		
518.			
	519. Requirements	521.	Closes the window without executing unsaved changes.
	520.	522.	
	523. Functional	525.	To close the window without saving any changes made.
	Description	526.	
	524.		
	527. Design	529.	
	Information	530.	
	528.		
	531. Testing	533.	
	Information	534.	
	532.		
	535. End-user	537.	Closes the Customer form without committing unsaved
	Documentation Notes		changes.
	536.	538.	
539.			
540.			
541.	8. CustomerAddressBox		
542.			
	543. Requirements	545.	
	544.	546.	
	547. Functional	549.	
	Description	550.	
	548.		
	551. Design	553.	
	Information	554.	
	552.		
	555. Testing	557.	
	Information	558.	
	556.		
	559. End-user	561.	The customer's address. You can modify the address if
	Documentation Notes		needed.
	560.	562.	
563.			
564.			
565.	9. CustomerIDBox		
566.			
	567. Requirements	569.	Test business rule for new customer number entry and
	568.		search criteria. Perform appropriate database search.
		570.	
	571. Functional	573.	To allow new customer entry and deletion. Search criteria
	Description		can be entered in this field.
	572.	574.	
	575. Design	577.	
	Information	578.	
	576.		
	579. Testing	581.	

Information	582.
580.	
583. End-user	585. Enter the customer's number by using the format ##-#-####.
Documentation Notes	You can also search for a customer by number.
584.	586.
587.	
588.	
589. 10. CustomerNameBox	
590.	
591. Requirements	593. Display the results of the database query based on customer
592.	ID. Allow for database search criteria to be entered.
	594.
595. Functional	597. To display the customer's name and provide a secondary
Description	method of record retrieval.
596.	598.
599. Design	601.
Information	602.
600.	
603. Testing	605.
Information	606.
604.	
607. End-user	609. The customer's name. You can search for a customer by
Documentation Notes	naming by entering the appropriate search criteria.
608.	610.
611.	
612.	
613. 11. DBmenu	
614.	
615. Requirements	617.
616.	618.
619. Functional	621.
Description	622.
620.	
623. End-user	625.
Documentation Notes	626.
624.	
627.	
628.	
629. 12. findopt	
630.	
631. Requirements	633.
632.	634.
635. Functional	637.
Description	638.
636.	
639. End-user	641.
Documentation Notes	642.
640.	
643.	
644.	
645. 13. addopt	
646.	
647. Requirements	649.
648.	650.
651. Functional	653.

	Description	654.	
	652.		
	655. End-user	657.	
	Documentation Notes	658.	
	656.		
659.			
660.			
661.	14. delopt		
662.			
	663. Requirements	665.	
	664.	666.	
	667. Functional	669.	
	Description	670.	
	668.		
	671. End-user	673.	
	Documentation Notes	674.	
	672.		
675.			
676.			
677.	15. recmenu		
678.			
	679. Requirements	681.	First menu item on the menu bar.
	680.	682.	
	683. Functional	685.	Provides menu options that display the application forms.
	Description	686.	
	684.		
	687. End-user	689.	
	Documentation Notes	690.	
	688.		
691.			
692.			
693.	16. clearopt		
694.			
	695. Requirements	697.	
	696.	698.	
	699. Functional	701.	
	Description	702.	
	700.		
	703. End-user	705.	
	Documentation Notes	706.	
	704.		
707.			
708.			
709.	17. helpmenu		
710.			
	711. Requirements	713.	
	712.	714.	
	715. Functional	717.	
	Description	718.	
	716.		
	719. End-user	721.	
	Documentation Notes	722.	
	720.		
723.			

724.

725.

726. To allow the update or creation of a customer order.

727.

728.

729.

730. #	731. Name	732. Type	733. Description
734. 1	735. Order	736. Form	737. To allow the update or creation of a customer order.
738. 2	739. OrderDe tails	740. Frame	741.
742. 3	743. CloseBut ton(1)	744. Comman dButton	745. To close the window without saving any changes made.
746. 4	747. OrderDe tail	748. Grid	749. To display the quantity and part number of the products that are ordered.
750. 5	751. SaveButt on(0)	752. Comman dButton	753. To save all changes and addition to the database.To save all changes and addition to the database.
754. 6	755. Product DetailsButton	756. Comman dButton	757. To display the Products form with additional information about the selected order number.
758. 7	759. ShipDat eBox	760. TextBox	761. To accept and display the date that the order is shipped.
762. 8	763. OrderDa	764. TextBox	765. To display the date that the order

		teBox		is recorded.
766.	9	767. OrderIdBox	768. TextBox	769. A display only field that either displays an existing number or assigns one for a new order. If a new order, generates the value for OrderDate.
770.	10	771. Label4	772. Label	773.
774.	11	775. Label3	776. Label	777.
778.	12	779. Label2	780. Label	781.
782.	13	783. ShipOptions	784. Frame	785.
786.	14	787. FederalChk	788. CheckBox	789. One of three valid shipping method for shipment and billing calculation. This choice is for Federal Express overnight.
790.	15	791. UnitedChk	792. CheckBox	793. One of three valid shipping method for shipment and billing calculation. This choice is for United Parcel Service.
794.	16	795. SpeedyChk	796. CheckBox	797. One of three valid shipping method for shipment and billing calculation. This choice is for Speedy Shipping Company.
798.	17	799. SalePersonListCombo	800. ComboBox	801. To allow for the identification of the order's salesperson.
802.	18	803. Shipto	804. Frame	805.
806.	19	807. ShipAddressBox	808. TextBox	809. To allow for a alternate address for order shipment.
810.	20	811. NameBox	812. TextBox	813. To allow for a alternate address for order shipment.
814.	21	815. Customer	816. Frame	817.
818.	22	819. AddressBox	820. TextBox	821. Displays the customer's address and allows for updates.
822.	23	823. CustomerNameCombo	824. ComboBox	825. To display the customer name relative to the previous Customer form.
826.	24	827. Label1	828. Label	829.

830.

831.

832.

833. 1. Order

834.

835. Requirements
836.

839. Functional
Description

840.

843. End-user
Documentation Notes
844.

837. Display the data associated with the order number selected on the Customer form.

838.

841. To allow the update or creation of a customer order.

842.

845. Use this form to retrieve order information and to create a new order. Detailed information about a product is available by selecting a product number and click on See Product Details.

846.

847.

848.

849. **2. CloseButton(1)**

850.

851. Requirements

852.

855. Functional

Description

856.

859. Design

Information

860.

863. Testing

Information

864.

867. End-user

Documentation Notes

868.

853. Closes the window without executing unsaved changes.

854.

857. To close the window without saving any changes made.

858.

861.

862.

865.

866.

869. Closes the Order form without committing unsaved changes.

870.

871.

872.

873. **3. OrderDetail**

874.

875. Functional

Description

876.

879. End-user

Documentation Notes

880.

877. To display the quantity and part number of the products that are ordered.

878.

881. Enter the quantity and part number of the items ordered.

882.

883.

884.

885. **4. SaveButton(0)**

886.

887. Requirements

888.

891. Functional

Description

892.

895. Design

Information

896.

899. Testing

Information

900.

903. End-user

Documentation Notes

904.

889. Save all data changes.

890.

893. To save all changes and addition to the database.To save all changes and addition to the database.

894.

897.

898.

901.

902.

905. Saves all data changes made to customer order.

906.

907.

908.

909. **5. ProductDetailsButton**

910.

911. Requirements

912.

913. Execute a order query and display the Product form with the correct data.

914.

915. Functional

Description

916.

917. To display the Products form with additional information about the selected order number.

918.

919.	Design	921.	
	Information	922.	
920.			
923.	Testing	925.	
	Information	926.	
924.			
927.	End-user	929.	Displays all product details for the product that you selected
	Documentation Notes		in the grid.
928.		930.	
931.			
932.			
933.	6. ShipDateBox		
934.			
	935. Requirements	937.	Date entered must meet business rules.
	936.	938.	
	939. Functional	941.	To accept and display the date that the order is shipped.
	Description	942.	
	940.		
	943. Design	945.	
	Information	946.	
	944.		
	947. Testing	949.	
	Information	950.	
	948.		
	951. End-user	953.	Enter the date that the order was shipped to the customer.
	Documentation Notes	954.	
	952.		
955.			
956.			
957.	7. OrderDateBox		
958.			
	959. Requirements	961.	If new order, assign the current date as the order date.
	960.		Read-only.
		962.	
	963. Functional	965.	To display the date that the order is recorded.
	Description	966.	
	964.		
	967. Design	969.	
	Information	970.	
	968.		
	971. Testing	973.	
	Information	974.	
	972.		
	975. End-user	977.	Display-only field.
	Documentation Notes	978.	
	976.		
979.			
980.			
981.	8. OrderIdBox		
982.			
	983. Requirements	985.	ID numbers must be unique.
	984.	986.	
	987. Functional	989.	A display only field that either displays an existing number or
	Description		assigns one for a new order. If a new order, generates the value for
	988.		OrderDate.

	991. Design Information	990. 993. 994.
	992.	
	995. Testing Information	997. 998.
	996.	
	999. End-user Documentation Notes	1001. Enter a valid order for a new order using the format A#### where A is a letter.
	1000.	1002.
1003.		
1004.		
1005.	9. FederalChk	
1006.		
	1007. Requirements	1009. Route order record for the appropriate shipment.
	1008.	1010.
	1011. Functional Description	1013. One of three valid shipping method for shipment and billing calculation. This choice is for Federal Express overnight.
	1012.	1014.
	1015. Design Information	1017.
	1016.	1018.
	1019. Testing Information	1021.
	1020.	1022.
	1023. End-user Documentation Notes	1025. Check this box for Federal Express overnight delivery.
	1024.	1026.
1027.		
1028.		
1029.	10. UnitedChk	
1030.		
	1031. Requirements	1033. Route order record for the appropriate shipment.
	1032.	1034.
	1035. Functional Description	1037. One of three valid shipping method for shipment and billing calculation. This choice is for United Parcel Service.
	1036.	1038.
	1039. Design Information	1041.
	1040.	1042.
	1043. Testing Information	1045.
	1044.	1046.
	1047. End-user Documentation Notes	1049. Check this box for the United Parcel Service ground delivery.
	1048.	1050.
1051.		
1052.		
1053.	11. SpeedyChk	
1054.		
	1055. Requirements	1057. Route order record for the appropriate shipment.
	1056.	1058.
	1059. Functional Description	1061. One of three valid shipping method for shipment and billing calculation. This choice is for Speedy Shipping Company.
	1060.	1062.

1063.	Design	1065.	
Information		1066.	
1064.			
1067.	Testing	1069.	
Information		1070.	
1068.			
1071.	End-user	1073.	Check this box for the Speedy Shipping Company delivery.
Documentation Notes		1074.	
1072.			
1075.			
1076.			
1077.	12. SalePersonListCombo		
1078.			
1079.	Requirements	1081.	Propagate list with valid salesperson for the customer's
1080.		region.	
		1082.	
1083.	Functional	1085.	To allow for the identification of the order's saleperson.
Description		1086.	
1084.			
1087.	Design	1089.	
Information		1090.	
1088.			
1091.			
1092.			
1093.	13. ShipAddressBox		
1094.			
1095.	Requirements	1097.	Accept and store alternate order address.
1096.		1098.	
1099.	Functional	1101.	To allow for a alternate address for order shipment.
Description		1102.	
1100.			
1103.	Design	1105.	
Information		1106.	
1104.			
1107.	Testing	1109.	
Information		1110.	
1108.			
1111.	End-user	1113.	Enter the address of the person receiving the order
Documentation Notes		shipment.	
1112.		1114.	
1115.			
1116.			
1117.	14. NameBox		
1118.			
1119.	Requirements	1121.	Accept and store alternate order address.
1120.		1122.	
1123.	Functional	1125.	To allow for a alternate address for order shipment.
Description		1126.	
1124.			
1127.	Design	1129.	
Information		1130.	
1128.			
1131.	Testing	1133.	
Information		1134.	
1132.			

1135.	End-user	1137.	Enter the name of the person receiving the order shipment.
Documentation Notes		1138.	
1136.			
1139.			
1140.			
1141.	15. AddressBox		
1142.			
1143.	Requirements	1145.	Data relationships are maintain
1144.		1146.	
1147.	Functional	1149.	Displays the customer's address and allows for updates.
Description		1150.	
1148.			
1151.	Design	1153.	
Information		1154.	
1152.			
1155.	Testing	1157.	
Information		1158.	
1156.			
1159.	End-user	1161.	Make changes to address as needed.
Documentation Notes		1162.	
1160.			
1163.			
1164.			
1165.	16. CustomerNameCombo		
1166.			
1167.	Requirements	1169.	Data relationships are maintained.
1168.		1170.	
1171.	Functional	1173.	To display the customer name relative to the previous
Description		Customer form.	
1172.		1174.	
1175.	Design	1177.	
Information		1178.	
1176.			
1179.			
1180.			
1181.			
1182.	Order item verification. To query the database based on product ID selected in the Order form and display the associated information. Form dismisses with OK button.		

1183.

The screenshot shows a Windows-style dialog box titled "Product Details". It has a light gray background and a blue title bar with standard window controls. Inside the dialog, there are five labeled input fields arranged vertically: "Product ID" (a small text box), "Supplier ID" (a medium text box), "Product Name" (a large text box), "Unit Price" (a medium text box), and "Units In Stock" (a spinner box with up/down arrows). At the bottom center of the dialog is an "OK" button.

1184.

1185.

1186. #	1187. Name	1188. Type	1189. Description
1190. 1	1191. Product	1192. Form	1193. Order item verification. To query the database based on product ID selected in the Order form and display the associated information. Form dismisses with OK button.
1194. 2	1195. UnitsInStockBox	1196. TextBox	1197. Displays number of units in stock.
1198. 3	1199. UnitPriceBox	1200. TextBox	1201. Displays unit price.
1202. 4	1203. ProductNameBox	1204. TextBox	1205. Displays product name.
1206. 5	1207. SupplierIDBox	1208. TextBox	1209. Displays supplier ID.
1210. 6	1211. ProductIDBox	1212. TextBox	1213. Value brought forward from the Order form. Value used a base of database query.
1214. 7	1215. OKButton	1216. CommandButton	1217. Dismisses the current window.
1218. 8	1219. Label5	1220. Label	1221.
1222. 9	1223. Label4	1224. Label	1225.
1226. 10	1227. Label3	1228. Label	1229.
1230. 11	1231. Label2	1232. Label	1233.
1234. 12	1235. Label1	1236. Label	1237.

1238.

1239.

1240.

1241. 1. Product

1242.

1243. Requirements

1245. All fields are display only. Display of form disables all other

1244.		active forms.
1247. Functional Description		1246.
1248.		1249. Order item verification. To query the database based on product ID selected in the Order form and display the associated information. Form dismisses with OK button.
1251. End-user Documentation Notes		1250.
1252.		1253. Display product information for order availability and pricing verification.
1255.		1254.
1256.		
1257.	2. UnitsInStockBox	
1258.		
1259. Requirements		1261. The correct stock quantity column value displays based on a query by product ID. Column name Invent.instock.
1260.		1262.
1263. Functional Description		1265. Displays number of units in stock.
1264.		1266.
1267. Design Information		1269.
1268.		1270.
1271. Testing Information		1273.
1272.		1274.
1275. End-user Documentation Notes		1277. This is a read-only field showing the number of product items in stock.
1276.		1278.
1279.		
1280.		
1281.	3. UnitPriceBox	
1282.		
1283. Requirements		1285. The correct unit price column value displays based on a query by product ID. Column name Invent.price.
1284.		1286.
1287. Functional Description		1289. Displays unit price.
1288.		1290.
1291. Design Information		1293.
1292.		1294.
1295. Testing Information		1297.
1296.		1298.
1299. End-user Documentation Notes		1301. This is a read-only field showing the price of the selected product.
1300.		1302.
1303.		
1304.		
1305.	4. ProductNameBox	
1306.		
1307. Requirements		1309. The correct product name column value displays based on a query by product ID. Column name Product.prodname.
1308.		1310.
1311. Functional		1313. Displays product name.

	Description	1314.
	1312.	
	1315. Design	1317.
	Information	1318.
	1316.	
	1319. Testing	1321.
	Information	1322.
	1320.	
	1323. End-user	1325. This is a read-only field showing the product name.
	Documentation Notes	1326.
	1324.	
1327.		
1328.		
1329.	5. SupplierIDBox	
1330.		
	1331. Requirements	1333. The correct supplier ID column value displays based on a
	1332.	query by product ID. Column name Vendor.suplID.
		1334.
	1335. Functional	1337. Displays supplier ID.
	Description	1338.
	1336.	
	1339. Design	1341.
	Information	1342.
	1340.	
	1343. Testing	1345.
	Information	1346.
	1344.	
	1347. End-user	1349. This is a read-only field showing the Product supplier ID
	Documentation Notes	number.
	1348.	1350.
1351.		
1352.		
1353.	6. ProductIDBox	
1354.		
	1355. Requirements	1357. Read-only field. Database column Product.prodID.
	1356.	1358.
	1359. Functional	1361. Value brought forward from the Order form. Value used a
	Description	base of database query.
	1360.	1362.
	1363. Design	1365.
	Information	1366.
	1364.	
	1367. Testing	1369.
	Information	1370.
	1368.	
	1371. End-user	1373. This is a read-only field showing the Product's ID number.
	Documentation Notes	1374.
	1372.	
1375.		
1376.		
1377.	7. OKButton	
1378.		
	1379. Requirements	1381. Hide and release current window.
	1380.	1382.
	1383. Functional	1385. Dismisses the current window.

Description	1386.	
1384.		
1387. Design	1389.	
Information	1390.	
1388.		
1391. Testing	1393.	
Information	1394.	
1392.		
1395. End-user	1397.	Closes the Product form.
Documentation Notes	1398.	
1396.		

1399.

1400.

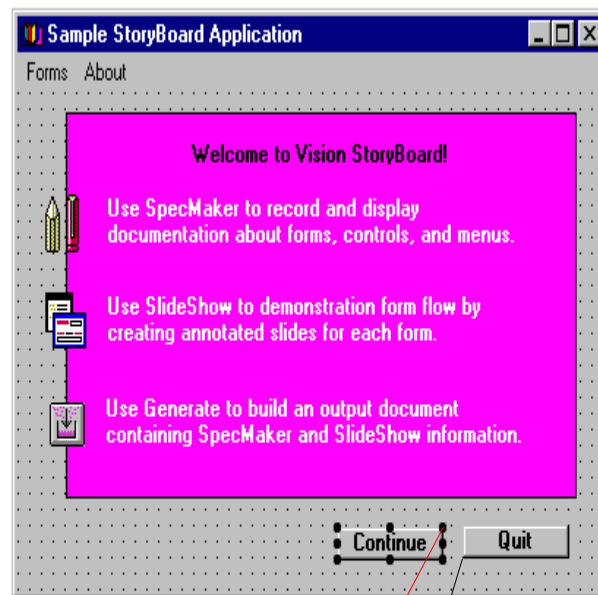
1401.

1402. #	1403. Name	1404. Description
1405. 1	1406. First Slide	1407. This is the first slide with jumps to About and Customer.
1408. 2	1409. Custome r	1410. Slide for the Customer form. This slide has two jumps.
1411. 3	1412. Order	1413. Slide for the Order form. This slide has two jumps.
1414. 4	1415. Product	1416. Slide for the Product form. This slide has a jump back to Order.
1417. 5	1418. About	1419. This is the slide for the About form. There is a jump back to Main.

1420.

1421.

First Form In The Application

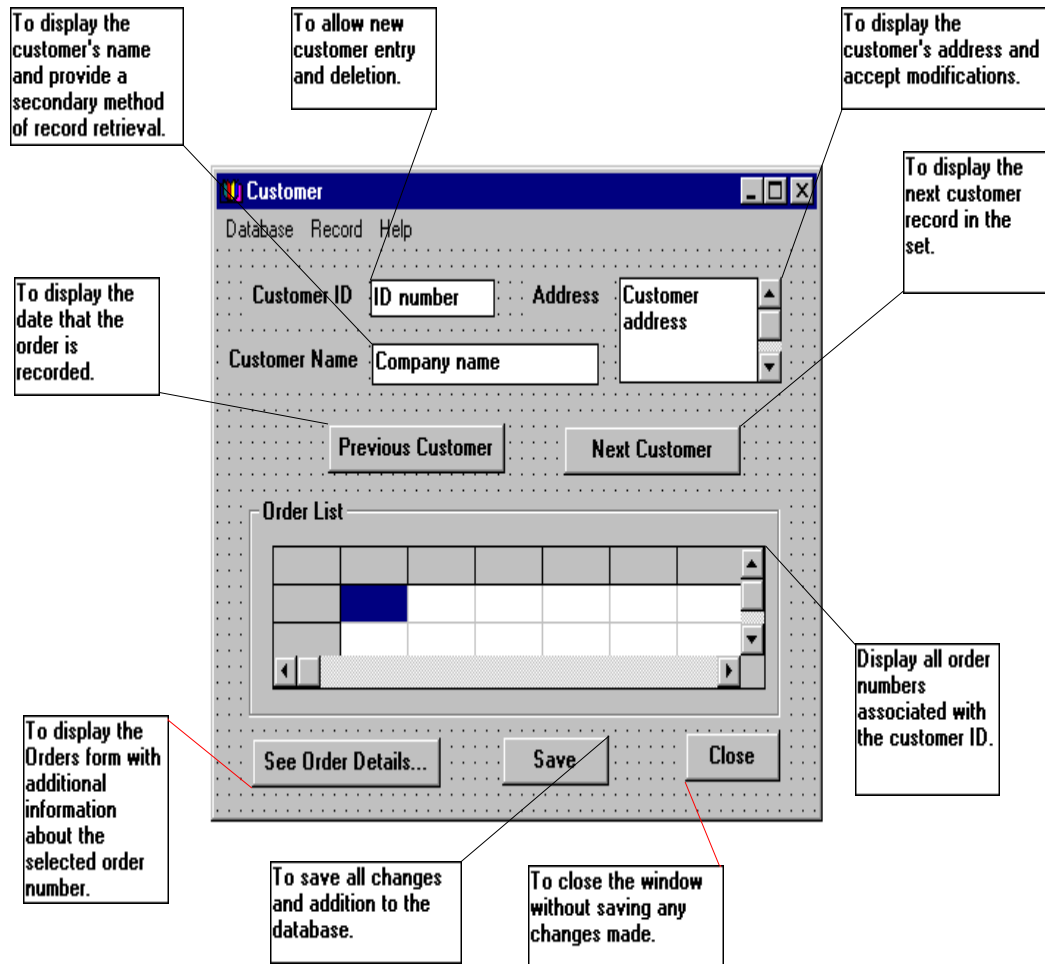


Dismiss the current window and display the Customer form for order entry.

End the running of the application and close all associated windows.

1422.

1423.



1424.

1425.

The screenshot shows a Windows-style application window titled "OrderEntry". The form is divided into several sections:

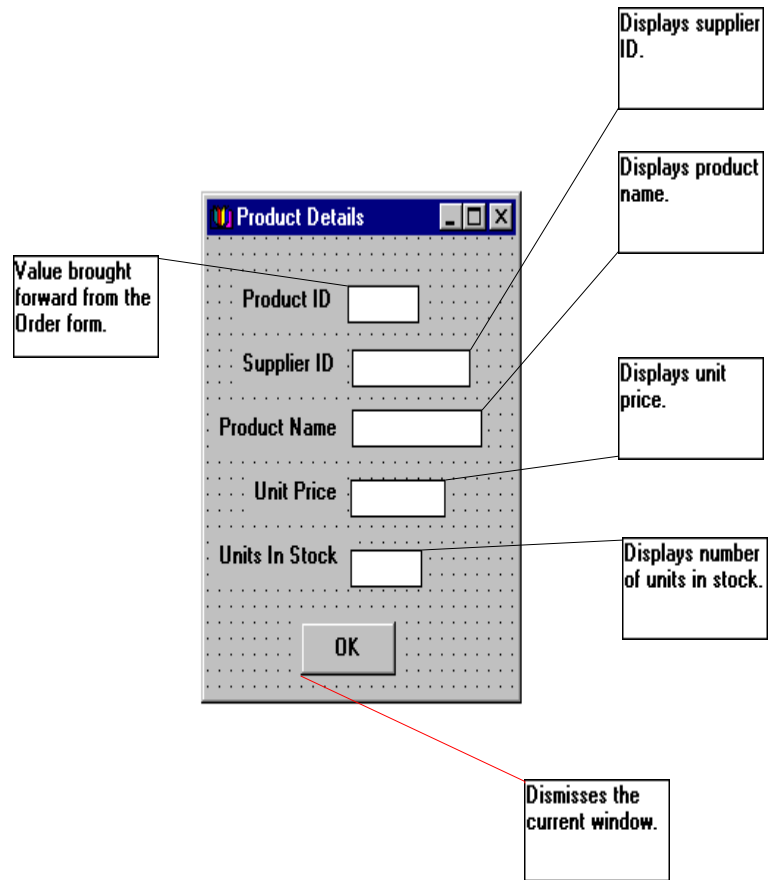
- Bill To:** Contains a dropdown menu labeled "CustomerNameCombo" and a text field labeled "Address".
- Ship to:** Contains a text field labeled "Name" and a text field labeled "Address".
- Sales Person:** A dropdown menu labeled "Combo1".
- Ship Via:** Three radio buttons labeled "Speedy", "United", and "Federal".
- Order Details:** A section containing three text fields for "OrderID", "OrderDate", and "ShipDate", followed by a table with multiple columns and rows. Below the table are three buttons: "See Product Details...", "Save", and "Close".

Callouts provide the following descriptions:

- To display the customer name relative to the previous Customer form.** (Points to CustomerNameCombo)
- Displays the customer's address and allows for updates.** (Points to the Address field under Bill To)
- One of three valid shipping method for shipment and billing calculation. This choice is for Speedy Shipping Company.** (Points to the Speedy radio button)
- To allow for a alternate address for order shipment.** (Points to the Name field under Ship to)
- To allow for a alternate address for order shipment.** (Points to the Address field under Ship to)
- One of three valid shipping method for shipment and billing calculation. This choice is for United Parcel Service.** (Points to the United radio button)
- One of three valid shipping method for shipment and billing calculation. This choice is for Federal Express overnight.** (Points to the Federal radio button)
- To allow for the identification of the order's salesperson.** (Points to Combo1)
- A display only field that either displays an existing number or assigns one for a new order. If a new order, generates the value for OrderDate.** (Points to the OrderID field)
- To accept and display the date that the order is shipped.** (Points to the ShipDate field)

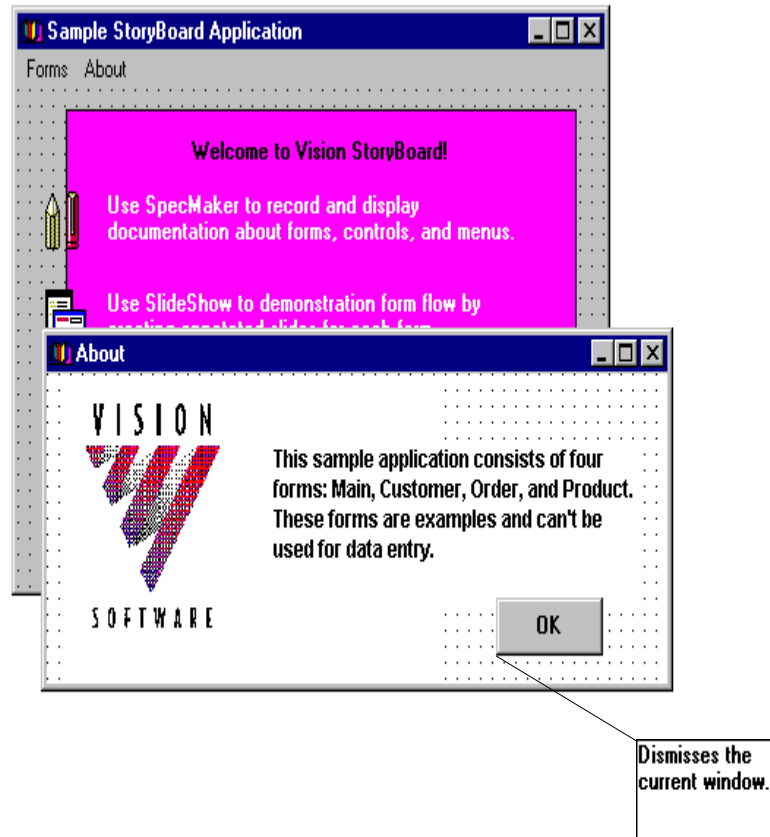
1426.

1427.



1428.

1429.



1430.

1431.