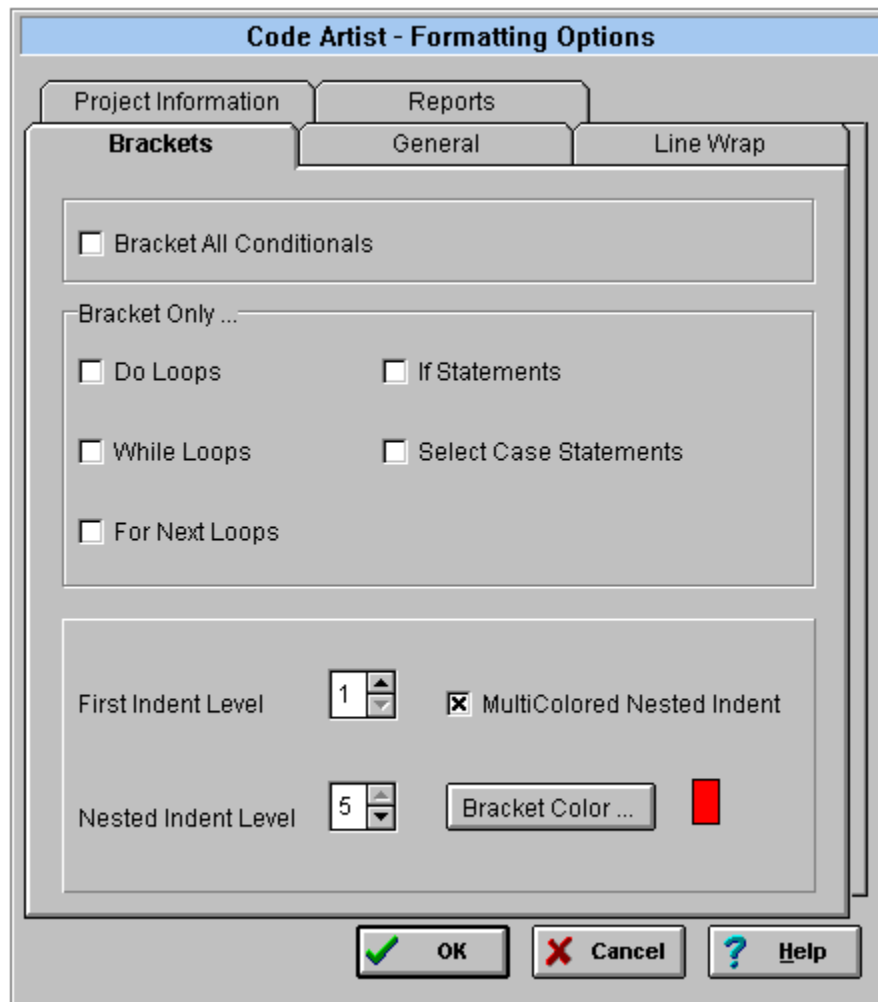


Accepted Variables

%f: File name of code being printed
%d: Current date and time
%p: Current page number
%s: Current subroutine at page-beginning or page-end

Nested brackets:

BRACKETS



Bracket Selection

Brackets make the printed code easier to read by aligning and connecting loops and other conditionals with a '['. Select the desired conditionals to bracket by selecting one or all of the choices.

Bracket Indenting

First Indent Level: Choose the amount of space between the bracket edge and the code which is being bracketed by clicking on the spinner or entering a number between one and eight.

Nested Indent Level: Choose the amount of space between nested brackets by increasing/decreasing the value of the spinner.

Bracket Color

Bracket color can be controlled in two ways: One color can be selected for all brackets, or the "Multi-colored" selection can be chosen.

Changing Fonts

To change the selected fonts, double click on the item to change in the edit window.

This will bring up the font dialog box to change/view the font type, size, color, style and effects.

Code

The font for the majority of the document can be changed here.

Collate

To assemble in the proper order.

COMMENT DELIMITER

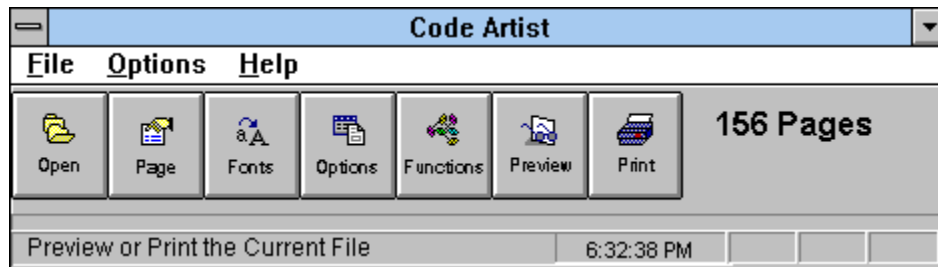
The Comment Delimiter allows the programmer to specify a character that they use to signify comment blocks as in the following example:

```
*****  
,  
' Descriptive comment goes here  
,  
' *****
```

Because the Code Artist knows what character you are using, it will take any instance of greater than 5 of that character in a row and convert the entire line to a graphical line. By specifying the * as your character, the above example would look like this:

```
_____  
,  
' Descriptive comment goes here  
,  
_____
```

THE CODE ARTIST

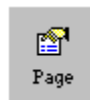


Menu Options

Loading a File or Project



Creating the Desired Look



Preparing the Document to be Printed



ORDERING INFORMATION

Registration

OTHER INFORMATION

[The Evaluation Period](#)

[The Code Artist's Mission](#)

[Under Development](#)

[System Requirements](#)

[Technical Overview](#)

[Questions, Comments and Complaints](#)

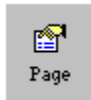
[Obtaining Technical Support](#)

[Legal Information](#)

[Version History](#)

CREATING THE DESIRED LOOK

There are three icons on the main window which have many formatting features. They can be selected, or the Options/Formatting main menu items can access them. The *Page* icon controls basic page setup, including margins, orientation and header/footer selections. The *Font* icon allows the user to change the font for the various parts of the document. The *Formatting Options* icon contains advanced features for dramatic code and overall document changes to give the final printout a well-polished and professional look.



Page Setup



Fonts



Formatting Options

The formatting features can be set whether or not a file or project is loaded. If a large project is loaded, it is quicker to change all of the page setup, fonts and formatting options at once since code artist will rebuild the project with each change.

Custom Pages

Select the number of pages to view at a time by choosing the number of rows and columns, then press the re-scale icon. Up to nine pages can be viewed at a time.

DPI

Print quality in dots per inch.

LEGAL INFORMATION

WARRANTY

Code Artist is offered to the public as a programming utility. It's usefulness is neither implied or guaranteed.

New versions of Code Artist/VB will be offered to the public at interval chosen by the authors based on availability, demand and other intrinsic factors.

Disclaimer

EXCEPT AS PROVIDED ABOVE, AUTHOR DISCLAIMS ALL WARRANTIES, EITHER EXPRESS OR IMPLIED, INCLUDING, BUT NOT LIMITED TO IMPLIED WARRANTIES OF MERCHANTABILITY AND FITNESS FOR A PARTICULAR PURPOSE, WITH RESPECT TO THE PRODUCT. SHOULD THE PROGRAM PROVE DEFECTIVE, THE PURCHASER ASSUMES THE RISK OF PAYING THE ENTIRE COST OF ALL NECESSARY SERVICING, REPAIR, OR CORRECTION AND ANY INCIDENTAL OR CONSEQUENTIAL DAMAGES. IN NO EVENT WILL AUTHOR BE LIABLE FOR ANY DAMAGES WHATSOEVER (INCLUDING WITHOUT LIMITATION DAMAGES FOR LOSS OF BUSINESS PROFITS, BUSINESS INTERRUPTION, LOSS OF BUSINESS INFORMATION AND OTHER SIMILAR SITUATIONS) ARISING OUT OF THE USE OR THE INABILITY TO USE THIS PRODUCT EVEN IF AUTHOR HAS BEEN ADVISED OF THE POSSIBILITY OF SUCH DAMAGES.

The Code Artist.

Copyright © 1995 Rich McGillicuddy

All Rights Reserved.

Exit

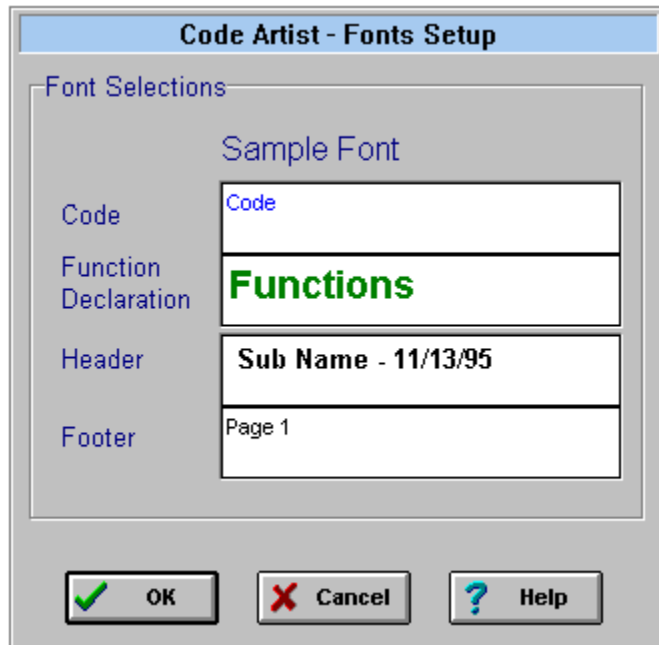
Leave the preview window. The document will still be loaded.

File types

File type selection limits the type of files displayed for the chosen directory. The user can change the file type selection in the "List Files of Type" section of the open dialog box which is displayed when trying to open a file for viewing.

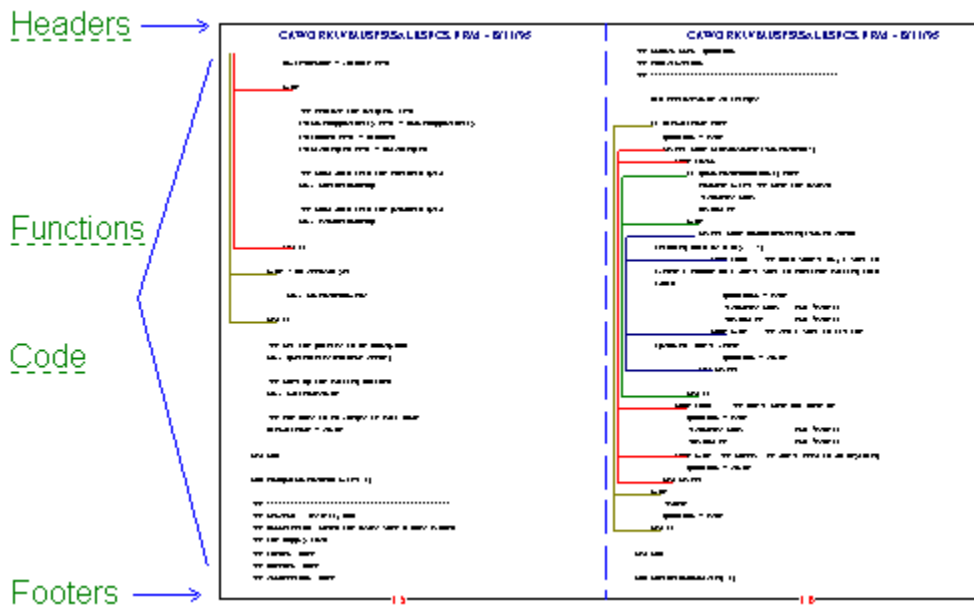
Fonts

Font options can be altered by clicking the font icon from the main window, or choosing Options/Formatting/Fonts through the program menu. The following window is then displayed:



To change the selected fonts, **double click** on the edit window of the item to change. This will bring up the font dialog box to change/view the font type, size, color, style and effects.

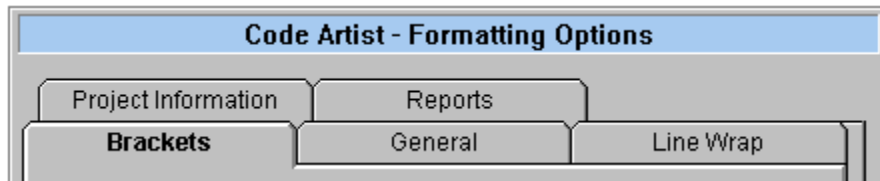
Fonts can be altered for the four different sections of code



Footers

The font for the type of footer selected in header/footer folder of the page setup section of the printer options procedure can be altered. The footer will then be automatically centered at the bottom of each printed file page.

FORMATTING OPTIONS



The formatting options can be accessed through the main menu option of Options/Formatting/Visual or through the options icon on the main window.

Click on item in above window or select a topic below for specific detail:

[Brackets](#)

[General](#)

[Line Wrap](#)

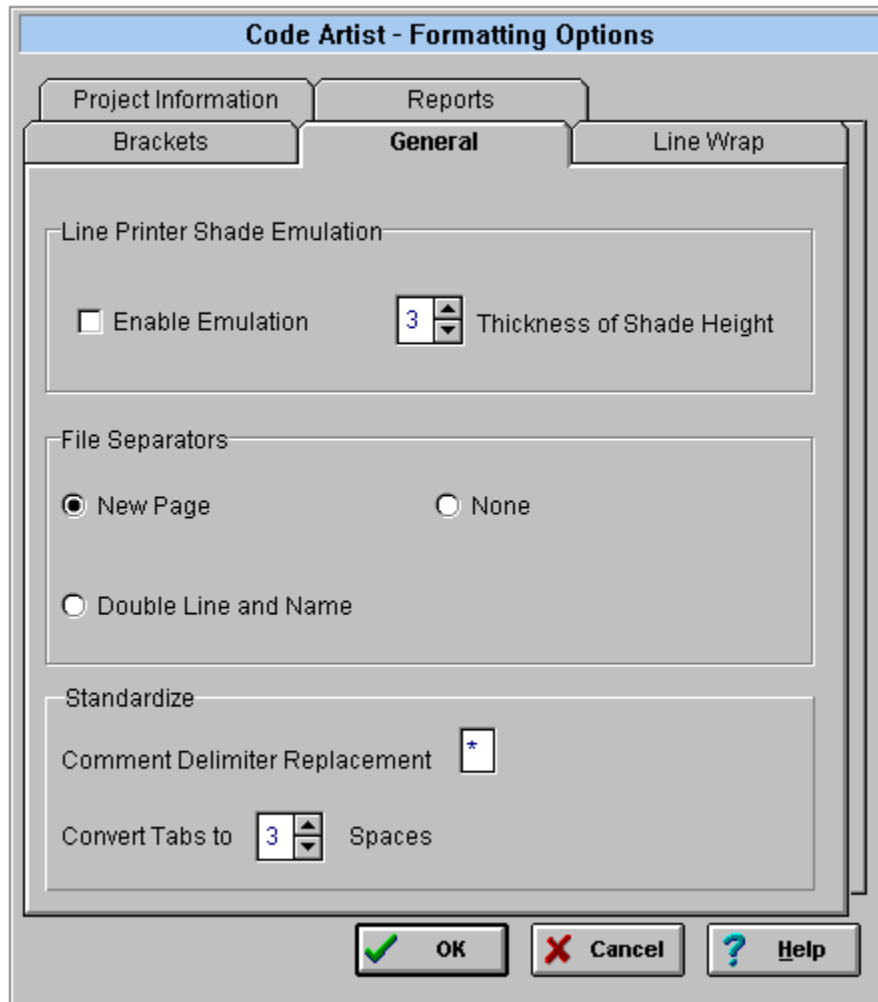
[Project Information](#)

[Reports](#)

Functions

Change the font properties of the function declaration in the printed document to make it easier to distinguish the beginning of new functions.

GENERAL



Line Printer Shade Emulation

Line printer shade emulation is another printing option and can be selected by checking *Enable Emulation*. The thickness of the shading can also be chosen by selecting how many lines will be printed per alternating color. If the user wishes to use the shade emulator, the gray lines will blend in with the watermark when they overlap. The watermark can be set in the Project Information folder in the Formatting Options window.

File Separators

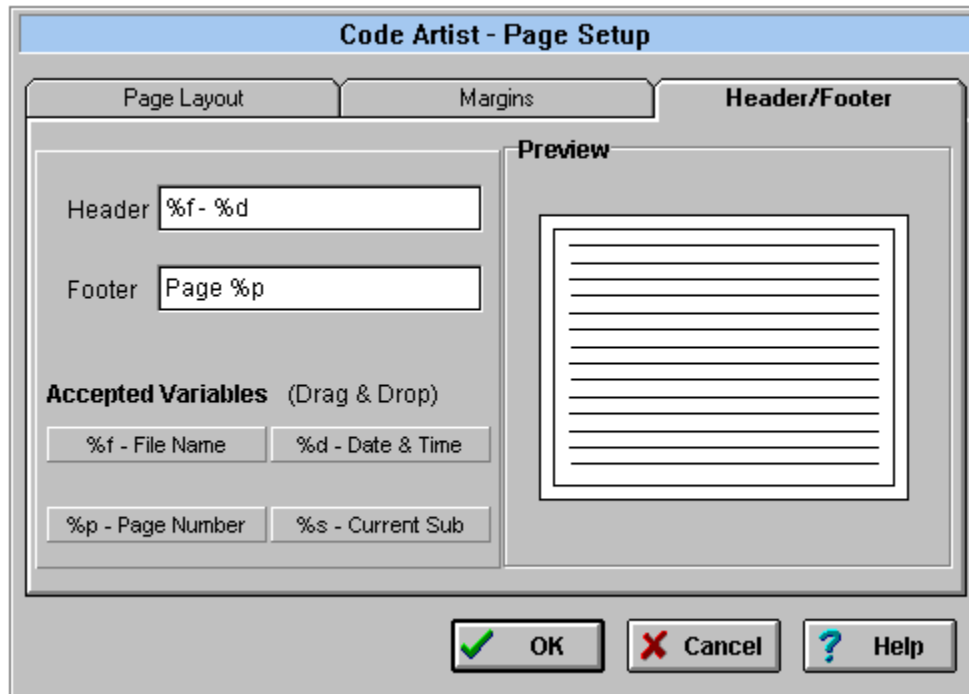
If a function ends near the bottom of a page, the next function to be printed will start on the next page (or the next side of the page in the landscape mode). If the user is printing a project with more than one file, he/she can choose the type of file separator to be added. This feature adds ease in viewing large documents by making it quicker to find a specific file.

Standardize

How are comments segmented out in the code to be printed? If the comments are preceded and/or followed by the repetition of a specific character throughout the code, enter this character in the comment delimiter replacement text box. This will convert these lines of the repeated character to a solid line across the page **on a whole line basis**.

Converting tabs to a specific number of spaces will give the printed file an "even" look.

HEADER/FOOTER



Add text or accepted variables to change the header and footer for the printed file. If chosen, the header and footer will be centered above the described page. Drag and drop any of the four accepted variables to include them as part of the header or footer.

The font for the header and footer can also be changed by selecting the font icon on the main window.

The Preview display will update with each change made to the page setup options window.

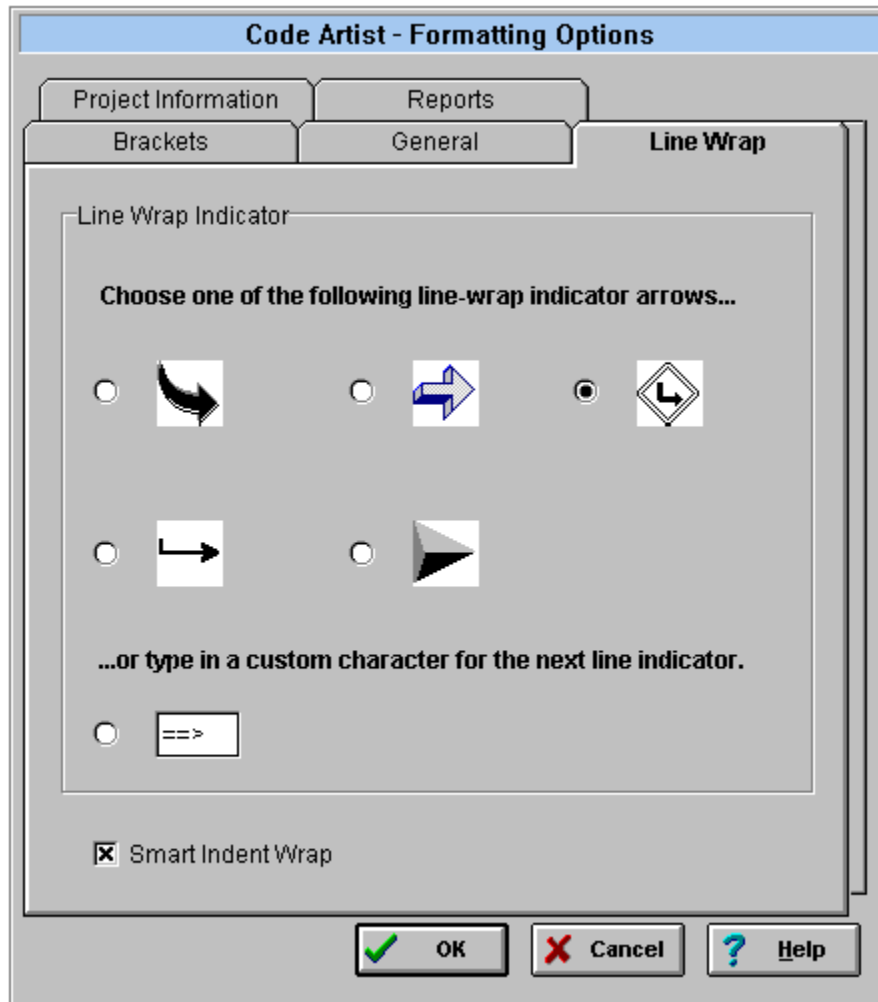
Headers

The font for the type of header selected in header/footer folder of the page setup section can be altered. The header will then be automatically centered at the top of each printed file page.

Landscape

Selecting landscape style will print two pages of code on each page of paper. The page orientation will be 11" by 8 1/2".

LINE WRAP



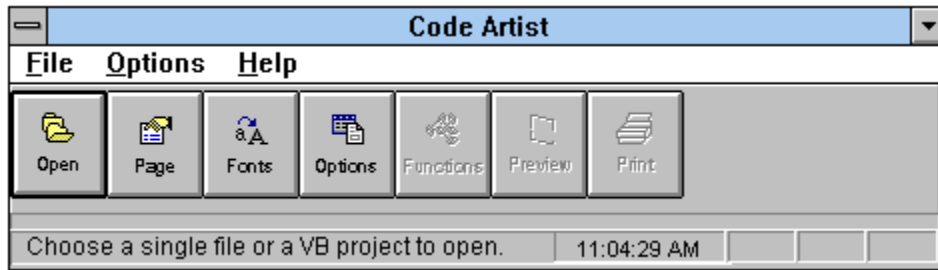
If the lines of code are too long and will be wrapped to the following line, the user can customize the appearance of the line wrap indicator.

The Smart Indent option can also be activated in this Formatting Options folder.

LOAD CLIPBOARD

Loads the current clipboard text into the code artist. The clipboard text is now the current print job. This is useful for copying specific bits and pieces of programs to have printed.

LOADING A FILE OR PROJECT



Click the file folder "Open" button or select File/Open to Load a file or project.

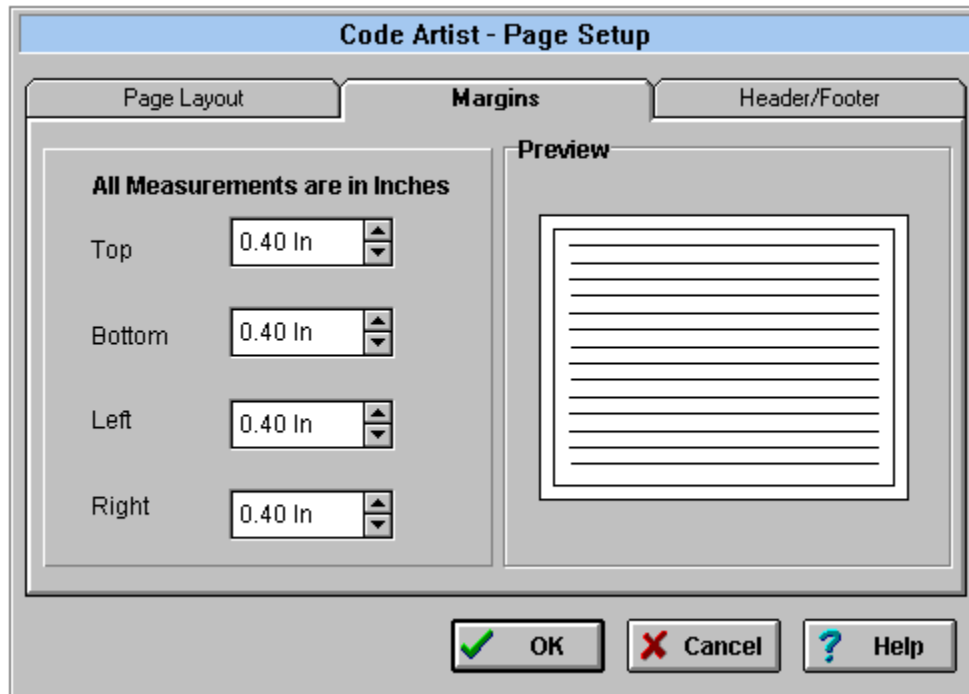
An open dialog box will be displayed. Choose the drive, directory and file or project, paying attention to the file type selection drop down box. Then amount of time it takes to complete the loading process depends on the size of the project. The status bar will inform the user which steps are currently being taken. The next step depends on whether a file or a project is the working document.

Clipboard Text

Working with Files

Working with Projects

MARGINS



Margin setting is accomplished by increasing or decreasing one or all of the spin buttons. The margin range is 0.4" - 2".

Each printed page will have the same margin.

The Preview display will update with each change made to the page setup options window.

MENU OPTIONS

File

Open (F2)

Print (F4)

Print Preview (F3)

Recent Files ▶

Exit (F7)

Options

Formatting ▶

Fonts...

Page Setup...

Visual...

Load Clipboard Text (F11)

Multiple Pages

Sets the preview window to four pages. The size and zoom level of these pages will depend on the size of the window.

REGISTRATION

Registering with a Credit Card

You can order with MC, Visa, Amex, or Discover from Public (software) Library by calling 800-2424-PsL or 713-524-6394 or by FAX to 713-524-6398 or by CIS Email to 71355,470. You can also mail credit card orders to PsL at P.O.Box 35705, Houston, TX 77235-5705.

Please reference products from these numbers

14346 - The Code Artist.

14347 - Code Stylist/VB.

THE ABOVE NUMBERS ARE FOR CREDIT CARD ORDERS ONLY.
THE AUTHOR OF THIS PROGRAM CANNOT BE REACHED AT THESE NUMBERS.

Any questions about the status of the shipment of the order, refunds, registration options, product details, technical support, volume discounts, dealer pricing, site licenses, non-credit card orders, etc, must be directed to MCGILL@CREATIVE.NET.

To insure that you get the latest version, PsL will notify us the day of your order and we will send your registration name and ID via electronic mail.

Registering Via CompuServe

SWREG numbers have been setup through CompuServe to make registering through the on line service easier than ever.

Go SWREG

#8838 - The Code Artist

#8839 - Code Stylist/VB

The cost of the product will be billed to your CompuServe account and we will be notified that day. We will then EMail you within 24 hours(in most cases) with a Registration Name and Registration ID for the product.

Pricing and Licensing

	Code Artist	Code Stylist	Value Pack (Both Products)
Single User	79	79	
Group Licensing			
10 Pack	700	700	
20 Pack	1350	1350	

50 Pack	3250
Site License	3500

3250
3500

3
4

For group rates, contact MCGILL@CREATIVE.NET.

For more information contact us at MCGILL@CREATIVE.NET.

Copyright © 1995 Rich McGillicuddy
All Rights Reserved

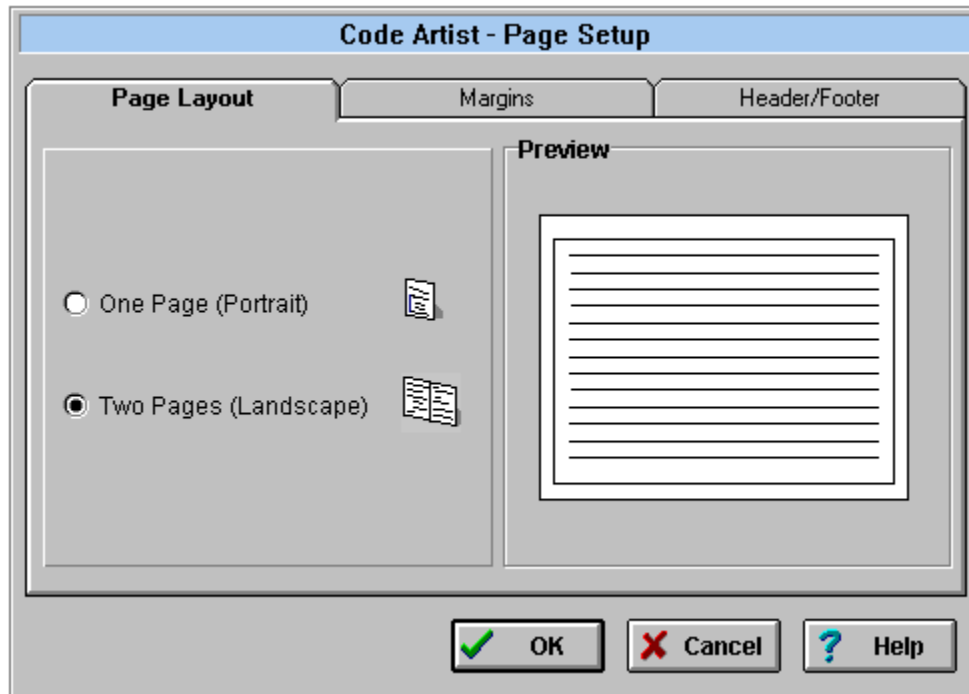
Page Backward

Move one page backward.

Page Forward

Move one page forward.

PAGE LAYOUT



Portrait vs. Landscape: Choose page orientation which controls the number of code pages per printed page.

The Preview display will update with each change made to the page setup options window.

Page Manipulation

The arrow icons on the icon bar of the preview window will page forward or backward one page at a time.

Additionally, the bottom right-hand corner of the preview window displays the current page number. Double click on this to select a specific page number to jump forward or backward in the document. If the document being previewed is long, this feature comes in handy for ease in moving through the preview screen.

Page Number

Once a file or project is loaded, the total number of pages in the document, including the title page, table of contents and function index (if selected), is displayed on the main window.

PAGE SETUP



The page setup settings can be changed/viewed at any time, whether or not a file or project is loaded in memory. (If there *is* a file/project currently loaded, all changes made to the setup will be reflected in the file/project in memory.) Use the Options/Formatting/Page Setup menu item to access them also.

Page Layout

Margins

Header/Footer

Portrait

Selecting portrait style will print one page of code on each page of paper. The page orientation will be 8 1/2" by 11".

PREPARING THE DOCUMENT TO BE PRINTED

Preparing the loaded file or project to be printed entails viewing the file and determining what the printed document should include. The following three icons on the main window take care of these steps.



Project Navigator (Functions Icon)



Print Preview



Print

Preview Display

In all of the Page Setup folders, the preview display on the right-hand side of the folder is showing the current settings. When the user changes a setting, the preview display will show the effect the change will have on the document.

PRINT

It is possible to print the loaded document by clicking on the print icon on the main window, by clicking on the print icon on the preview screen tool bar, or selecting the menu option File/Print. These three steps will all bring up the print dialog box.

Print options

Print Range: (1) All
 (2) Selection
 (3) Pages Range

Print Quality: Choose either 150 or 300 dpi.

Copies: Choose the number of copies to be printed

Collated copies: If more than one copy is being printed, the user can select to have the printouts collated.

Printer Setup: displays the system printer setup window.

Printing

Once the print options are selected, and the print job has begun, the print status window will be displayed.

Print All

Prints every page in the loaded document

PRINT JOB NAVIGATOR (FUNCTIONS ICON)

Once a *project* is loaded, the project is analyzed so that a file and function list is built, and the user can choose the particular files and/or functions to include in the printed document. It does not matter in what order these files and functions are selected--they will always be printed in the same order they appear in the MAK file.

When the project is first loaded, the job navigator window is automatically displayed. But if in the course of changing formatting options or previewing the document the user decides that the chosen files/functions need to be changed, the functions icon on the main window will bring up the job navigator window with the current settings displayed.

The job navigator is not available for single file documents.

The user may now select all or some of the project functions or files to preview and print. To move a file from the display on the left to the selections listing on the right, simply drag the item to the desired destination. A pop up menu is also available by clicking the right mouse button. The move option in the pop up menu moves the selected text from the left to the right display. Use the pop up menu to **remove** selections from the right-hand side list of print selections. The user can either remove the selected files or all of the files in the right display using the options on the pop up menu. The insert and delete keys also work to move files from one window to another.

Double-click on a file item to get a detail listing of the functions that are contained in the file. Like whole files, these functions can also be selected or dragged and dropped as items to print.

VB Project Print Job Navigator

Choose complete files or selected functions to be printed. Drag these from the "Project" outline on the left to the "Print Selections" on the right.

Project: PTAB.MAK

PRIVPROF.BAS

F()GetPrivProfStr

F()WritePrivProfStr

CONSTANT.TXT

FRMDEPT.FRM

F()Command3D3_Click

F()Form_Load

F()NavigationTable_Fetch

F()NavigationTable_MouseUp

F()Table1_MouseUp

FRMOPEN.FRM

FRMFINC.FRM

F()Chart1_LButtonDbIClk

F()Chart1_UserScroll

F()Command3D3_Click

F()Form_Load

F()NavigationTable_Fetch

F()NavigationTable_MouseUp

F()Table1_Fetch

Print Selections

FRMDEPT.FRM

FRMOER.FRM

F()Chart1_LButtonDbIClk

F()Form_Load

F()LoadGraphData

F()LoadOERInfo

F()NavigationTable_Fetch

F()NavigationTable_MouseUp

F()SetupLegends

F()Table1_Fetch

FRMCONF1.FRM

CONSTANT.TXT

-End-

Help

OK

PRINT PREVIEW

To preview a file, click on the preview icon on the main window icon bar or select File/Print Preview through the main menu. Click on a particular tool bar item or read about the preview screen features and options below.



The various options in the print preview screen include:

Single vs. Multi-page view

Choose the single page icon to view one page only or the many pages icon to view four pages at a time.

Custom Pages

Increase or decrease the number of rows and columns to view up to nine pages at a time.

Zoom

Choose the size of the document in the zoom drop-down box

Print Selection

In the preview window, click on specific pages for a customized print selection. When the cursor is over a specific page, it will be displayed as a check mark and page information is pops up. When it's time to print, choose the "selection" button on the print dialog box.

Page Manipulation

There are various methods of maneuvering around the document to move from page to page easily.

The document can be printed by clicking on the printer icon, or the user can exit the preview window by clicking on the exit icon.

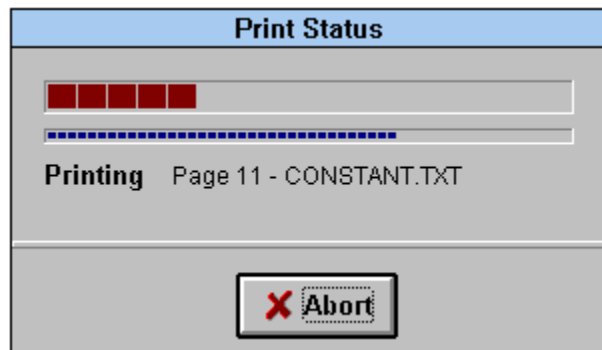
Print Range

Select the 'from' and 'to' pages to create a specific range to be printed.

Print Selection

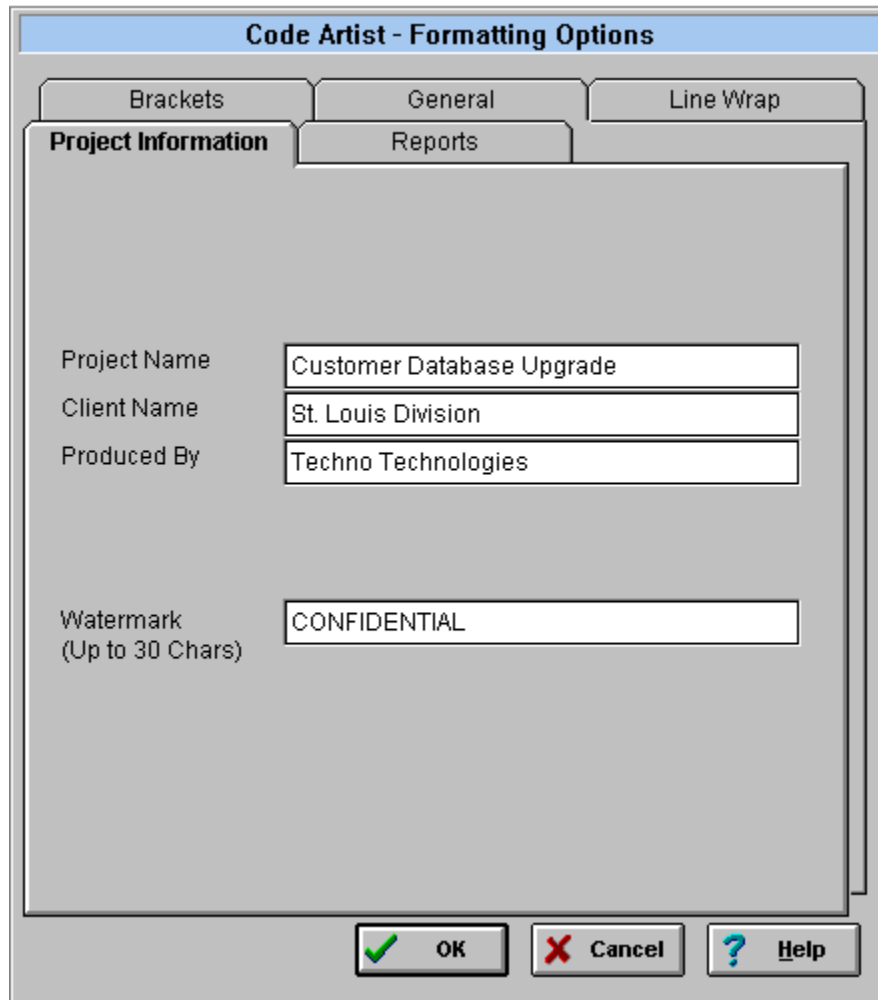
While in the print preview screen, the user can select specific non-contiguous pages to be printed. Click on the desired page, and the shadow of the page turns red to indicate it has been selected to print.

Print Status






The Print Status window displays two gauges. The top gauge is an overall time guide for the print job. The lower gauge and the text below it describe which part of the document is currently being processed. Click on the abort button to cancel the print job.

PROJECT INFORMATION



The image shows a software dialog box titled "Code Artist - Formatting Options". It has three tabs: "Brackets", "General", and "Line Wrap". The "Project Information" sub-tab is active, and the "Reports" sub-tab is also visible. The "Project Information" section contains four text input fields: "Project Name" with the value "Customer Database Upgrade", "Client Name" with "St. Louis Division", "Produced By" with "Techno Technologies", and "Watermark (Up to 30 Chars)" with "CONFIDENTIAL". At the bottom of the dialog are three buttons: "OK" (with a green checkmark icon), "Cancel" (with a red X icon), and "Help" (with a blue question mark icon).

Code Artist - Formatting Options		
Brackets	General	Line Wrap
Project Information		
Reports		
Project Name	Customer Database Upgrade	
Client Name	St. Louis Division	
Produced By	Techno Technologies	
Watermark (Up to 30 Chars)	CONFIDENTIAL	
  		

The information entered on the project information folder will be printed on the title page if the title page has been selected on the Reports folder of the Formatting Options group and a project is being printed.

The watermark option can also be activated in this folder by typing in the desired watermark (up to 30 characters) in the appropriate text box.

QUESTIONS, COMMENTS AND COMPLAINTS

Support for The Code Artist is available through EMail

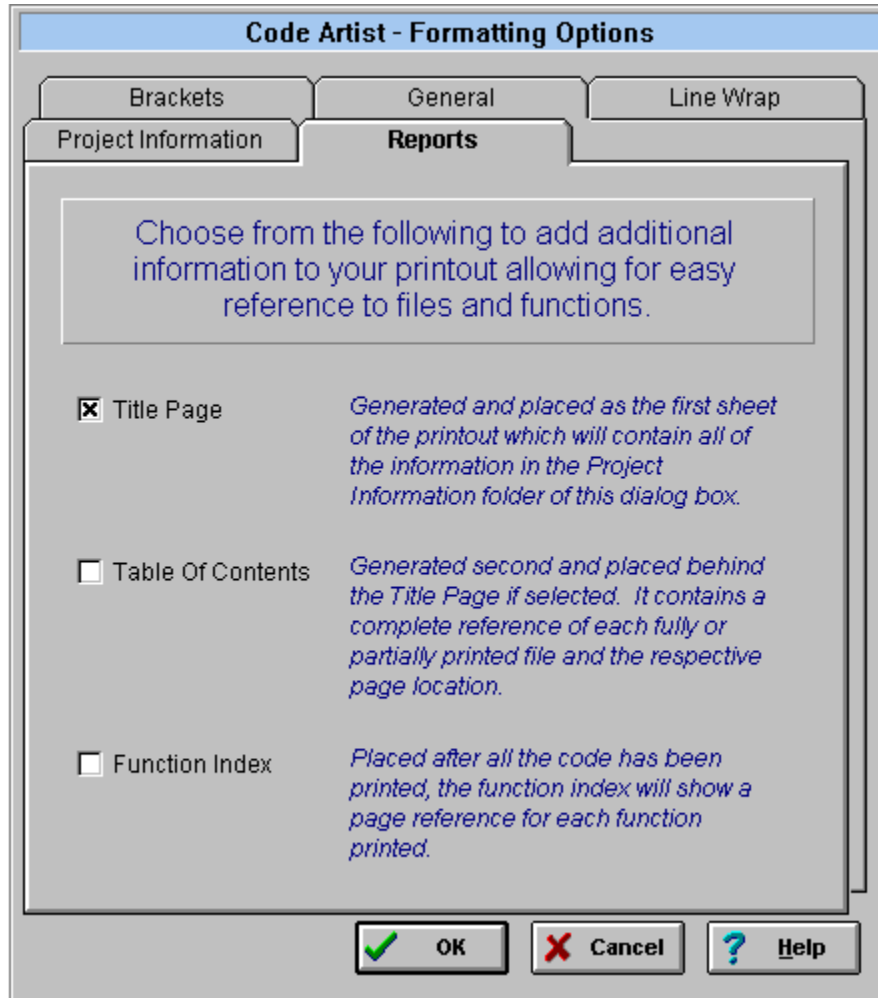
Send any Questions, Comments and Complaints to [MCGILL @ CREATIVE.NET](mailto:MCGILL@CREATIVE.NET).

Recent Files

The Code Artist will remember up to the last seven files or projects loaded. Use the recent files option in the main menu to view the list.

Registration

REPORTS



The user can choose to have a title page and/or a table of contents printed prior to the code. If selected, the title page and table of contents will only print if the document to be printed is a project and not a single file. An additional option is the function index which lists the functions in the code and the respective page. This listing would be printed after the selected code, again only if the code being printed is part or all of an entire project.

Re-scale

The re-scale icon (the ruler and pencil) should be pressed after the row or column number is altered.

Shade Emulation

```
Function gbRfshSalesFocus () As Integer  
    frmSalesFocus.cmdRfshSalesFocus.Value = True  
    gbRfshSalesFocus = True  
  
End Function
```

Single Page

Sets the preview window to one page, scaled to window size.

Smart Indent

Smart Indent enables a line of wrapped text to be indented to the same indentation level of the previous line.

Example:

Smart Indent on:

```
'Found a single ampersand... double it
sSQL = Left$(sSQL, nFoundPos) & "&" & Right$(sSQL,
└─ Len(sSQL) - nFoundPos)
```

Smart Indent off:

```
'Found a single ampersand... double it
sSQL = Left$(sSQL, nFoundPos) & "&" & Right$(sSQL,
└─ Len(sSQL) - nFoundPos)
```

Status Bar

Gives instructions on possible next steps or present status.

SYSTEM REQUIREMENTS

Memory, Memory and more memory. The number of pages the preview holds is solely based on the amount of memory your machine has. We have had print jobs of greater than

200 pages on 32MB of RAM.

80+ pages on 16 MB of RAM.

TECHNICAL OVERVIEW - The Code Artist & The Code Stylist

Finally, a set of tools to make your code look its best - both in and out of the computer.

THE CODE ARTIST - EVERY PRINT OUT IS A MASTERPIECE.

The Code Artist offers more features, has a higher quality and is easier to use than any of its VB code printing predecessors. Some of its features include:

Support for both VB3 & VB4 File Structure

Load both type of project files without any hassle.

Page Format

Word processor-like page setup routines allow you to select Page Orientation, Header/Footer and Margins options and visually see the affects on a sample page.

Customizable Fonts

Custom fonts are available for many areas of the application to differentiate key areas of the document for easy reviewing.

Flexible Bracketing

Bracketing is the ability to have lines to the left of conditionals and loops which quickly identify the beginning and ending of each one. The Code Artist has a flexible structure that allows the user to choose which type of conditional needs to be bracketed, what color the brackets should be and even alternate colors in the brackets which signify nested conditionals and loops.

Complete VB Project Manipulation

The user chooses which functions and files to print. The Code Artist allows easy choice of functions or files from the Project Navigation Tree.

The Comment Delimiter

Many programmers add a line of a single character around a block of comments. Tell the Code Artist what character to look for and it will change the row of characters into a graphical line.

You decide--what looks better:

or

Ingenious Line Wrap

The user not only can choose from a number of pictures to indicate a line wrap, but can also make any character string a customized global line-wrap indicator. This allows the printout to flow seamlessly without losing the look of your code.

Smart Indent is also an option which will make sure that the indented line automatically indents to the level that the original line began. This again is a necessary quality for professional-looking code.

Line Printer Shading Emulation

User definable shading areas allow for a more readable code printout.

Professional Reporting Accessories

- Generate a Title Page to contain company information.
- Generate a Table of Contents for easy reference to all files. This is handy in those printouts of many pages and files.
- Generate a Function Index to quickly find the page number of a particular function.

Watermark Option

Choose the watermark option to define the watermark that appears diagonally across each page. For example, "Confidential", "Property of..." and "Code Review as of 11/11/95".

Smart Function Page Location

If a new function is about to begin printing near the bottom of a page, the Code Artist will automatically begin a new page with that function.

Clipboard Support

Choose a file, a project or just print from the clipboard!

EACH AND EVERY FEATURE WORKS IN EITHER THE PORTRAIT MODE (ONE PAGE OF CODE PER PRINTED PAGE) OR THE LANDSCAPE MODE (TWO PAGES OF CODE PER PRINTED PAGE)!

The above features alone are enough to warrant a purchase of the Code Artist. But the best feature of the Code Artist is the ability to preview the printout ahead of time in a preview window that allows:

- WYSIWYG viewing displays the actual pages on the screen. No more simple window painting that other printing programs offer.
- Preview up to nine pages at a time.
- Page selection options that allow the user to select any number of pages in preview mode to print. No more remembering page numbers for the 1,2,3,9-14 format!
- Because of the lightening fast calculations that take place before the print job occurs, you will be able to tell how many pages you will print before you print them. No more stealth 200+ page print jobs!

.

CODE STYLIST/VB - MAKING YOUR SOURCE CODE LOOK ITS BEST...

Have you had to code quickly to meet a deadline? Or perhaps you work with a team of programmers, each with their own unique style? Or maybe you've inherited the source code from hell? If you program for a living, chances are you have had to look at some interesting source code. So what can be done to make your life as a programmer easier? Use the Code Stylist/VB on all of your Visual Basic 3.0 projects.

Code Stylist/VB is a source code formatting tool for Microsoft Visual Basic. Within a matter of minutes, Code Stylist/VB allows you to specify your personal or company standard formatting preferences, process and format all of the source code, and save the new clean code into a new directory. It will even spell check your code and allow you to see all changes in a side-by-side code comparison.

Code Stylist/VB includes:

Automatic Insertion of Option Explicit

Line splitting of:

- Single line If Then statements
- Multiple Dim as statements
- Multiple Const statements
- Multiple Statements separated by ':'s

Indentation

Formatting of all control statements allowing the for varying spaces per each indent. For example,

```
For x = 1 To 100
  Debug.Print x
Next x
```

becomes

```
For x = 1 To 100
    Debug.Print x
Next
```

Comments

Choose from over 10 options for single line comments and end of statement comments. These options include placement of any the comments and creating comment block lines to block off large numbers of comments in a row. This makes reading code much easier.

Comment Headers in Functions and Subs

Create a common header for all procedures and functions. Imagine having the following inserted before or after all of your subroutine declarations:

```
'-----
' Name      : CenterForm
' Author    : Your Name Here
' Date      : 12/12/95
' Params    : aForm as Form
' Purpose    :
'
' DATE WHO  WHAT
'-----
'
```

Blank Lines

Creating the spacing look you desire to make reading through the code and conducting code reviews a painless process.

Spell Checking

Spell Check all the literals and/or the comments in the code.

Instant reporting

With the Integrated Visual Difference Engine, a project manager can easily see where changes were made

Flexibility

One of The Code Stylist's greatest features is it's flexibility. Each option is configurable by itself or as a group. This gives the programmer total control over how they want the code to turn out. It makes creating and conforming to project standards a snap.

WITH THE CODE ARTIST AND CODE STYLIST, MAKE YOUR CODE LOOK IT'S BEST BOTH IN AND OUT OF THE COMPUTER.

Check it out

If you do not already have a copy, visit <http://www.cycloid.com> and try The Code Artist and The Code Stylist today.

Registration

Code Stylist/VB
Copyright © 1995 Cycloid Software.
All Rights Reserved.

The Code Artist.
Copyright © 1995 Rich McGillicuddy
All Rights Reserved

THE CODE ARTIST'S MISSION

In Designing The Code Artist, the goals were

1. Create one executable that is simple to use and powerful. No messing with setting the program up.
2. Provide many of the viewing features allowed in today's word processors such as True Print Preview. Not printing to the back of a form.
3. Tell the user how many pages your going to print ahead of time.
4. Provide a nice project navigator than can easily be manipulated to show what functions I want to print.

After using many of the 3rd party products that claim to make my life easier. I have found many of the products:

1. To be extremely slow.
2. Have the hidden feature of crashing based upon some seemingly standard inputs.
3. Allow the entry of bizarre inputs to make the output look awful.
4. Use a standard setup routine that installs different versions of DLL's and other files without looking to see if they already exist. This renders my system useless because it installs files I already have on my system.
5. That analyze code create huge temporary files and take many hours to tell me information I could probably find quicker just by looking.
6. That provide simple services, install many files on my system that when I take the program off, leave unwanted files on my system.

The Evaluation Period

The Evaluation period is based on a 50 credit limit. Below is a listing of how these credits can be used:

# Credits	Action
1	Starting the Application
1	Every 15 Minutes that the program is up and running.
1	Every time a Print Job is Started
1	Every 5 pages printed

This translates into having the program running 50 times, executing it once and leaving it up and running for 750 minutes in a row(12.5 hrs) or printing 250 pages.

Once the evaluation period is over. You must decide whether The Code Artist is a tool that you find useful. If so,

you can purchase it by following the steps given in the application and the help file.

Under the HELP menu is Ordering Information. Click on that to bring you to the Information Screen. This should guide you through the ordering instructions.

If you are having troubles finding purchasing information, send an Email to MCGILL@CREATIVE.NET.

See Also

[Registering](#)

UNDER DEVELOPMENT

We are trying to provide the most complete Visual Basic Toolset available today. To do this, constant improvements are needed. Some of the upcoming additions include:

1. Complete VB 4 Add-in support.
2. Incremental Printing
3. Batch printing.
4. Code Policeman.
5. Code Review Printing.
6. Code Standards Printouts.
7. Support for the VB4 new conditions.(With do)
8. Customizable style sheets to allow for the storing of multiple styles.
9. A full 32 bit executable.
10. Better Function Header Support.
11. A Clipboard Wizard to allow multiple pastes from a clipboard without having to save that to a file. Do it directly in The Code Artist.(already completed!)
12. Naming Convention Enforcer.

And many others. If you have any ideas or comments, please contact us as MCGILL@CREATIVE.NET.

Version History

V0.9 9/1/95(Beta Release)

V1.0 11/1/95

V1.1 12/1/95

- Added VB4.0 support
 - VB project file support
 - Support for VB 4.0 Classes functions to appear as functions.

V 1.2 12/14/95

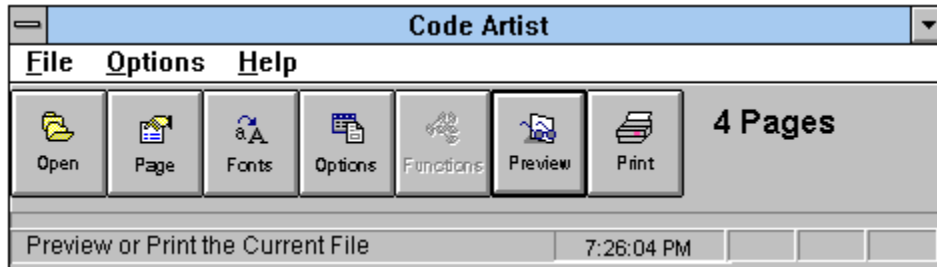
- Fixed problem if last line of a side in Landscape/2 pages per page mode was the beginning of a bracket and the margins were set to a large number, the bracket appeared to go up instead of going to the bottom of the page.
- Fixed logic in choosing certain pages to print.
- Fixed problem with line wrap. If a Variable had a _ character in it, The Code Artist would recognize this as a new entity and up the variable name. Now the variable is kept together.
- Added support for multiple clipboard pastes into the same document. This is the first step in allowing the users to organize multiple pastes for the clipboard.
- Fixed problem of sometimes miss recognizing a subroutine.

Watermark

A watermark is a "seal" printed diagonally across a page of paper.

WORKING WITH FILES

Once a file is loaded, all but the functions icon on the main icon panel are enabled and the number of pages is displayed.

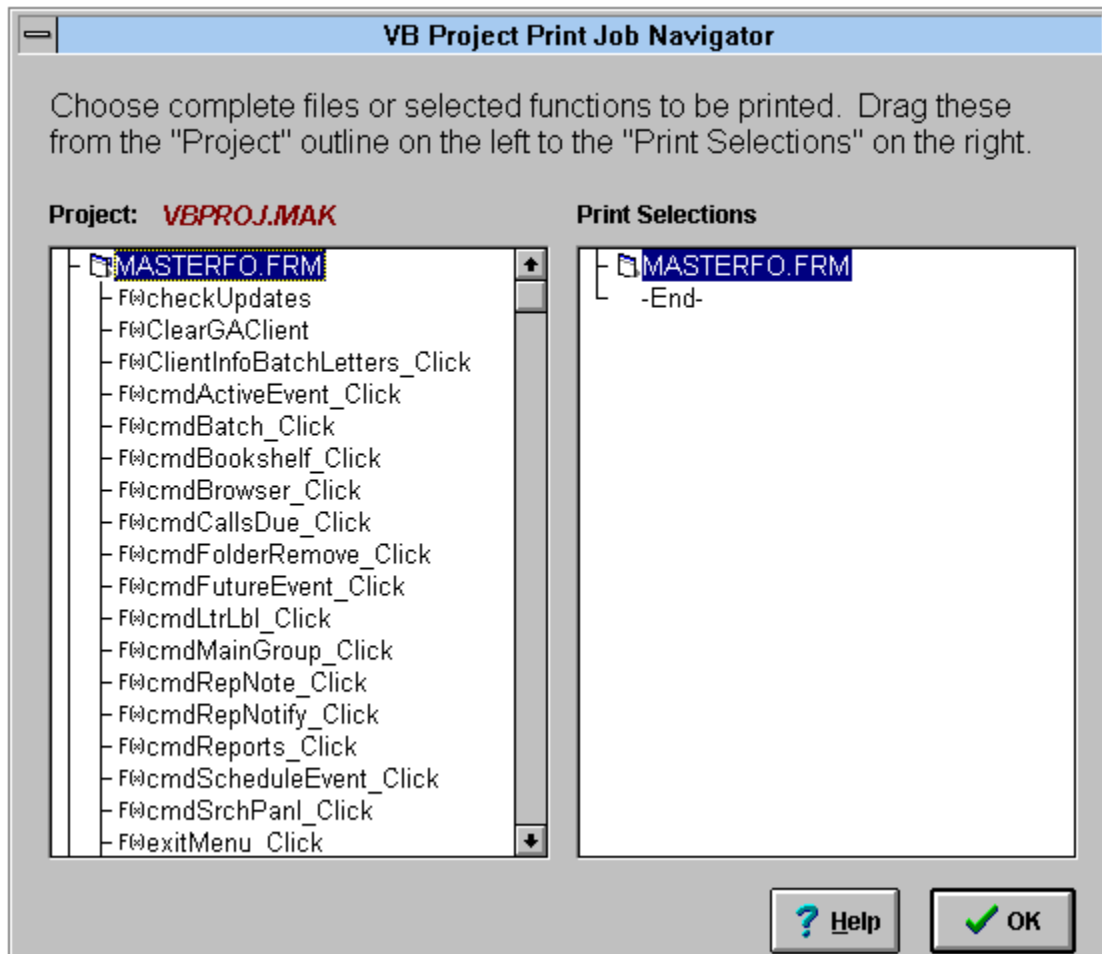


The user can:

- Change the current page setup settings
- Customize the font settings for all aspects of the loaded document
- Change the document settings with the formatting options
- Preview the loaded file
- Print the file
- Open a new file or project

WORKING WITH PROJECTS

Once a project is loaded, a job navigator window is displayed to allow the user the opportunity to select the specific parts of the project to be printed:



Manipulating the VB Print Job Navigator

After the user selects the necessary files and functions to be included in the final document, the number of pages is displayed and all of the icons are enabled.



The user now can:

- Change the current page setup settings
- Customize the font settings for all aspects of the loaded document
- Change the document settings with the formatting options
- Alter the project's functions to be printed
- Preview the loaded project
- Print the project with the current settings

The functions icon is only available with open projects.

Zoom

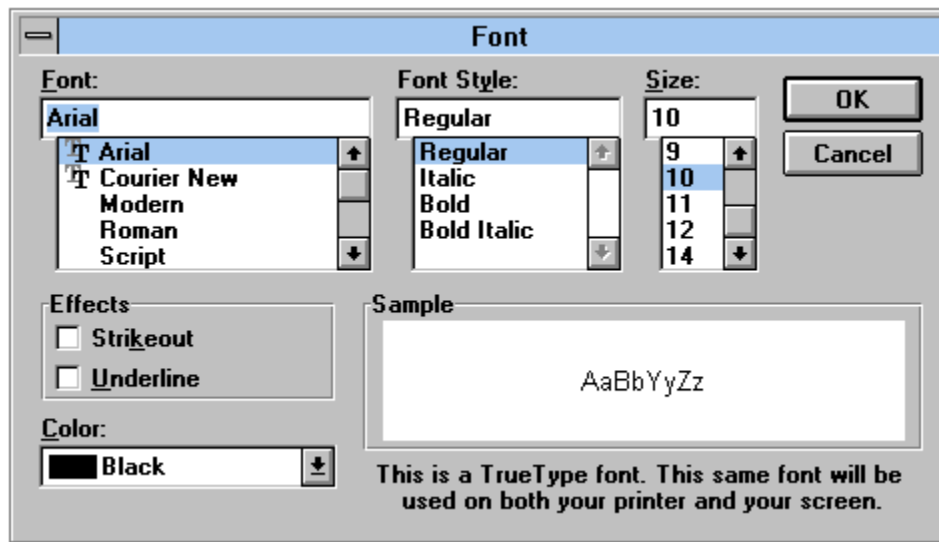
Select the desired size of the document to be displayed in the preview window. Three non-numeric choices are also available:

- (1) Page Width--the document re-scales according to the size of the window so that the width of the page covers the entire window.
- (2) Whole Page--automatically scales the document to the size of the screen (no scroll bars).
- (3) Two Pages--the same as choosing one row by two columns in the custom pages options. The two pages fit entirely in the window.

Comment

Statement in code proceeded by "Rem" or an apostrophe (').

Font dialog box



Functions Icon

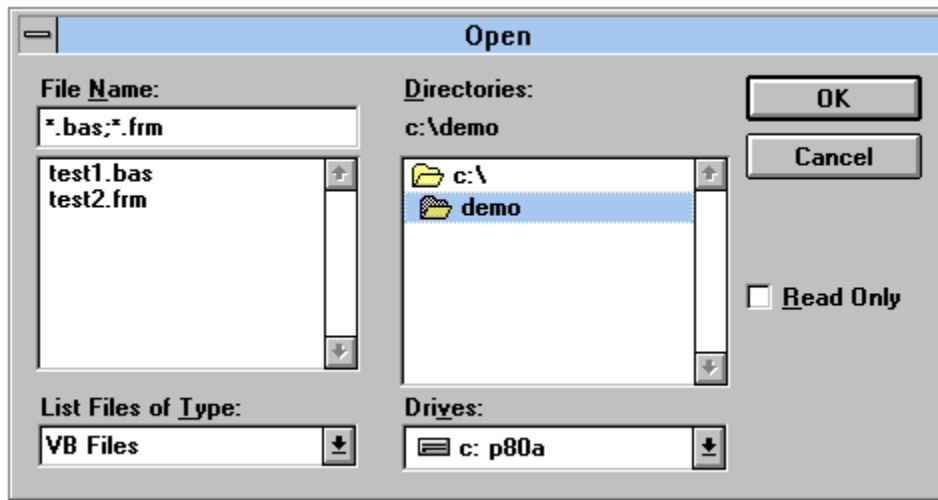


MAIN WINDOW

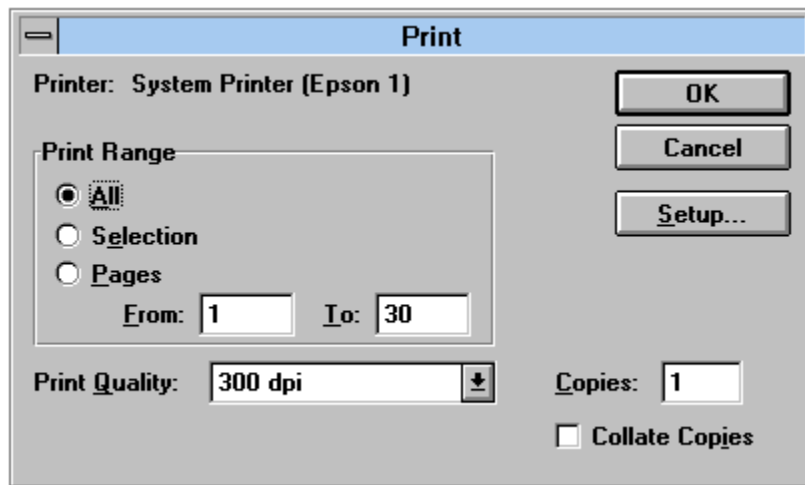


Open Dialog Box

Displayed when opening a file or project.



Print Dialog Box



How to print.

