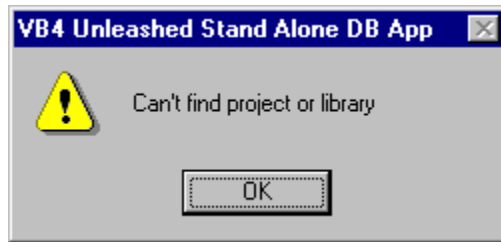
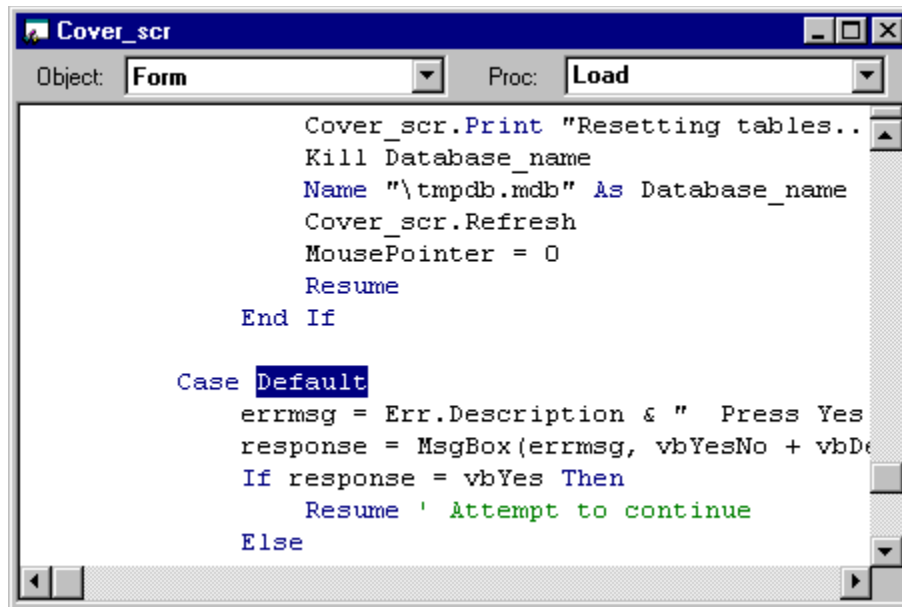


At the time this application was shipped, there was an error referencing the Crystal Reports OCA which prevents the program from executing from design mode. Unfortunately, this error is not trappable.

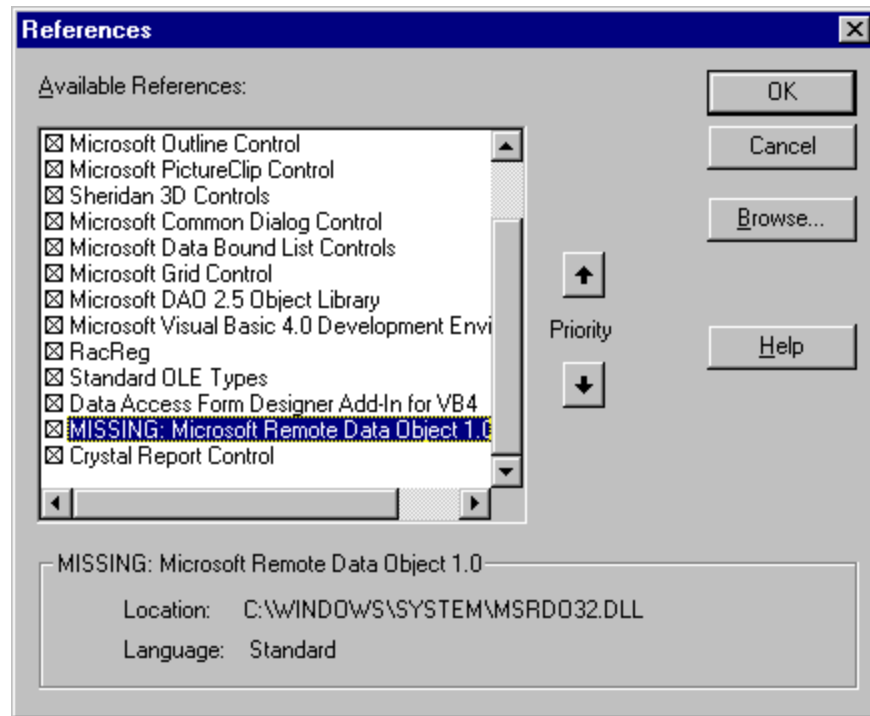
If you get the following error:



the program will stop in the load subroutine of the Cover_Scr.



To correct the problem, select the References option from the Tools menu and remove references to unused libraries. In the example below, the 32-bit Microsoft Remote Data Object 1.0 should be "unchecked".



After unchecking MISSING libraries, try re-running the program.

If the crystal report control itself is MISSING, you can run the program by removing the Crystal report control from the following screens:

FRMACCNT.FRM	Customer accounts
FRMCUSTA.FRM	Single customer account
FRMORDER.FRM	Order form

By removing the control, you will not be able to print the reports, but you will be able to run the program.

If the Crystal report OCA file is not MISSING, then you should not get this error and the reports should print properly.