



## Help for PerCnt

[Properties](#)

[Events](#)

### **Registration Information**

### **Order Form**

### **Getting Custom Controls Written**

### **Description**

PerCnt is a Visual Basic custom control that makes status (percentage) bar display easy.

### **File Name**

PERCNT2.VBX

### **Object Type**

Percent

### **Compatibility**

VB 1.0 and up

**Distribution Note** When you develop and distribute an application that uses PerCnt, you should install the file PERCNT2.VBX into the users Windows SYSTEM directory. PerCnt has version information built into it. So, during installation, you should ensure that you are not overwriting a newer version of PerCnt.

---

Close

## PerCnt Properties

Properties that have special meaning for this control or that only apply to this control are marked with an asterisk (\*).

**BackColor** Property

**\*BevelBar** Property

**\*BevelInner** Property

**\*BevelOuter** Property

**\*BevelWidth** Property

**\*BevelWidthBar** Property

**\*Border** Property

**\*BorderWidth** Property

**\*Caption** Property

**Enabled** Property (default)

**FontBold** Property

**FontItalic** Property

**FontName** Property

**FontSize** Property

**FontStrikethru** Property

**FontUnderline** Property

**ForeColor** Property

**Height** Property

**hWnd** Property

**Index** Property

**Left** Property

**Name** Property

**Parent** Property

**\*Percent** Property (default)

**Tag** Property

**\*TextBackColor** Property

**\*TextForeColor** Property

**\*ThreeD** Property

**Top** Property

**Visible** Property

**Width** Property



## PerCnt Events

Events that have special meaning for this control or that only apply to this control are marked with an asterisk (\*).

**Click Event**

**DblClick Event**

## BevelBar Property

[See Also](#)

[Example](#)

### Description

Determines the 3-D style of the percentage bar.

### Usage

[*form.*][*control.*]**BevelBar**[ = *integer* ]

### Remarks

The value of this property determines the style of the percentage bar. If the [ThreeD](#) property is set to False, this property is ignored. This property may be one of four values:

Value	Description
0	Normal bar
1	Raised percentage bar (3-D)
2	Inset percentage bar (3-D)
3	Lowered percentage bar (3-D)

### Data Type

Integer (enumerated)

## See Also

Properties:

[BevelInner](#)

[BevelOuter](#)

[BevelWidthBar](#)

[Percent](#)

[ThreeD](#)

## BevelInner Property

[See Also](#)

[Example](#)

### Description

Determines the 3-D style of the border immediately surrounding the percentage area.

### Usage

[*form.*][*control.*]**BevelInner**[ = *integer* ]

### Remarks

The value of this property determines the style of the percentage bar's border. If the [ThreeD](#) property is set to False, this property is ignored. This property may be one of four values:

Value	Description
0	Normal frame
1	Raised frame (3-D)
2	Inset frame (3-D)
3	Lowered frame (3-D)

### Data Type

Integer (enumerated)

**See Also**

Properties:

[BevelBar](#)

[BevelOuter](#)

[BevelWidth](#)

[BorderWidth](#)

[ThreeD](#)

## BevelOuter Property

[See Also](#)

[Example](#)

### Description

Determines the 3-D style of the border (if any) surrounding the control.

### Usage

[*form.*][*control.*]**BevelOuter**[ = *integer* ]

### Remarks

The value of this property determines the style of the control's border. If the [ThreeD](#) property is set to False, this property is ignored. This property may be one of four values:

Value	Description
0	Normal frame
1	Raised frame (3-D)
2	Inset frame (3-D)
3	Lowered frame (3-D)

### Data Type

Integer (enumerated)



**See Also**

Properties:

[BevelBar](#)

[BevelInner](#)

[BevelWidth](#)

[BorderWidth](#)

[ThreeD](#)

## BevelWidth Property

[See Also](#)

[Example](#)

### Description

Determines the width of the inner and outer borders (bevels).

### Usage

*[form.][control.]BevelWidth[ = integer ]*

### Remarks

The value of this property determines the width of the inner border (if any, see [BevelInner](#)) and the outer border (if any, see [Border](#) and [BevelOuter](#)). This is always measured in pixels.

### Data Type

Integer

**See Also**

Properties:

[BevelInner](#)

[BevelOuter](#)

[Border](#)

[BorderWidth](#)

## BevelWidthBar Property

[See Also](#)

[Example](#)

### Description

Determines the width of the 3-D effect (if any) of the percentage bar.

### Usage

*[form.]***BevelWidthBar** [ = *integer* ]

### Remarks

The value of this property determines the width of the 3-D effect (if any, see [BevelBar](#)). This is always measured in pixels.

### Data Type

Integer

**See Also**

Properties:

[BevelBar](#)

[ThreeD](#)

## Border Property

[See Also](#)

[Example](#)

### Description

Determines whether or not there is a border around the control.

### Usage

[*form.*][*control.*]**Border**[ = *integer* ]

### Remarks

The value of this property determines whether or not the control has a border. This property may be one of two values:

Value	Description
0	No border
1	Single width border

### Data Type

Integer (enumerated)

**See Also**

Properties:

[BevelOuter](#)

[ThreeD](#)

## BorderWidth Property

[See Also](#)

[Example](#)

### Description

Determines the distance between the inner border and the outer border.

### Usage

*[form.][control.]***BorderWidth***[ = integer ]*

### Remarks

The value of this property determines the distance between the outer border (if any, see [Border](#) and [BevelOuter](#)) and the inner border (if any, see [BevelInner](#)). This is always measured in pixels.

### Data Type

Integer



**See Also**

Properties:

[BevelInner](#)

[BevelOuter](#)

[ThreeD](#)

## Caption Property

[See Also](#)

### Description

Sets the text that appears in the percentage bar.

### Usage

`[form.][control.]Caption[ = string ]`

### Remarks

If this property is set, the text appears in the percentage bar. It overrides the text that automatically gets set with the Percent property.

### Data Type

String

**See Also**

Properties:

Percent

## Percent Property

[See Also](#)

[Example](#)

### Description

Sets the value of the status (percentage) bar.

### Usage

`[form.][control.]Percent[ = integer ]`

### Remarks

This property determines how much of the status (percent) bar is full and what value is displayed in the center of the box. If the [Caption](#) property is set, this property only affects the size of the bar, the text in the center of the control is controlled by the [Caption](#) property.

This property can range from 0 to 100. This property is the default value of the control.

### Data Type

Integer

**See Also**

Properties:

[BevelBar](#)

[BevelWidthBar](#)

[Caption](#)

## TextBackColor Property

[See Also](#)

### Description

Sets the color of the text when it's in the background.

### Usage

[*form.*][*control.*]**TextBackColor**[ = *color* ]

### Remarks

This property determines what color the text is when it's on the right side of the percentage bar.

### Data Type

Color

**See Also**

Properties:

Percent

TextForeColor

## TextForeColor Property

[See Also](#)

### Description

Sets the color of the text when it's in the foreground.

### Usage

*[form.]***TextForeColor**[ = *color* ]

### Remarks

This property determines what color the text is when it's on the left side of the percentage bar (i.e., contained within it).

### Data Type

Color



**See Also**

Properties:

Percent

TextBackColor

## ThreeD Property

[See Also](#)

[Example](#)

### Description

Determines whether or not 3-D effects are used.

### Usage

*[form.][control.]ThreeD[ = boolean ]*

### Remarks

If this property is set to False, all of the Bevel and Border description properties are ignored. In this case, PerCnt either draws a plain, thin border, or nothing at all (this depends on the [Border](#) property).

If this property is set to True (the default), all of the properties affect the appearance of PerCnt.

### Data Type

Integer (boolean)

## See Also

Properties:

[BevelBar](#)

[BevelInner](#)

[BevelOuter](#)

[BevelWidth](#)

[BevelWidthBar](#)

[Border](#)

[BorderWidth](#)



## Bevel Example

In this example, the program will styles of the bevels used. To try this example, paste the code into the Declarations section of a form that contains a four horizontal scroll bars (one for BevelBar, one for BevelInner, and one for BevelOuter, and one to control the percentage bar), three labels (which show the properties), and a PerCnt control. Press F5. Play with the scroll bars to see things change.

```
Sub Form_Load ()
    Me.BackColor = RGB(192, 192, 192)

    HScroll11.Value = 0
    HScroll11.Min = 0
    HScroll11.Max = 3

    HScroll12.Value = 0
    HScroll12.Min = 0
    HScroll12.Max = 3

    HScroll13.Value = 0
    HScroll13.Min = 0
    HScroll13.Max = 3

    HScroll14.Value = 50
    HScroll14.Min = 0
    HScroll14.Max = 100

    Percent1.BorderWidth = 3
    Percent1.BevelWidth = 2
    Percent1.BevelWidthBar = 2
    Percent1.ThreeD = True
    Percent1.BackColor = RGB(192, 192, 192)

    Call HScroll11_Change
    Call HScroll12_Change
    Call HScroll13_Change
    Call HScroll14_Change
End Sub

Sub HScroll11_Change ()
    Percent1.BevelBar = HScroll11.Value
    Label1.Caption = "BevelBar:" & Format$(HScroll11.Value)
End Sub

Sub HScroll11_Scroll ()
    Call HScroll11_Change
End Sub

Sub HScroll12_Change ()
    Percent1.BevelInner = HScroll12.Value
    Label2.Caption = "BevelInner:" & Format$( HScroll12.Value )
End Sub

Sub HScroll12_Scroll ()
    Call HScroll12_Change
End Sub
```

```
Sub HScroll13_Change ()  
    Percent1.BevelOuter = HScroll13.Value  
    Label3.Caption = "BevelOuter:" & Format$( HScroll13.Value )  
End Sub
```

```
Sub HScroll13_Scroll ()  
    Call HScroll13_Change  
End Sub
```

```
Sub HScroll14_Change ()  
    Percent1.Percent = HScroll14.Value  
End Sub
```

```
Sub HScroll14_Scroll ()  
    Call HScroll14_Change  
End Sub
```



## Border and ThreeD Properties Example

In this example, the program will vary the width of the bars. To try this example, paste the code into the Declarations section of a form that contains two check boxes, two labels, and a PerCnt control (make this control wide). Press F5. Play with the check boxes to see things change.

```
Sub Form_Load ()
    Check1.Value = 0
    Check2.Value = 0

    Percent1.BevelInner = 3
    Percent1.BevelOuter = 3
    Percent1.BevelBar = 3
    Percent1.BevelWidth = 2
    Percent1.BevelWidthBar = 2
    Percent1.BorderWidth = 3

    Call Check1_Change
    Call Check2_Change
End Sub

Sub Check1_Change ()
    Percent1.Border = Check1.Value
    If Check1.Value <> 0 Then
        Label1.Caption = "Border"
    Else
        Label1.Caption = "No Border"
    End If
End Sub

Sub Check2_Change ()
    Percent1.ThreeD = Check2.Value
    If Check2.Value <> 0 Then
        Label2.Caption = "ThreeD"
    Else
        Label2.Caption = "No NoThreeD"
    End If
End Sub
```



## Percent Property Example

In this example, the program will show the percentage bar going up and down. To try this example, paste the code into the Declarations section of a form that contains two command buttons and a PerCnt control. Press F5. Play with the buttons.

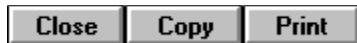
```
Sub Form_Load ()
    Command1.Caption = "Up"
    Command2.Caption = "Down"
End Sub

Sub Command1_Click ()
    Dim I As Integer

    For I = 0 To 100
        Percent1.Percent = I
    Next I
End Sub

Sub Command2_Click ()
    Dim I As Integer

    For I = 100 To 0 Step -1
        Percent1.Percent = I
    Next I
End Sub
```



## Width Properties Example

In this example, the program will vary the width of bevels. To try this example, paste the code into the Declarations section of a form that contains four horizontal scroll bars, three labels, and a PerCnt control (make this control wide). Press F5. Play with the scroll bar to see things change.

```
Sub Form_Load ()
    HScroll11.Value = 2
    HScroll11.Min = 0
    HScroll11.Max = 10

    HScroll12.Value = 2
    HScroll12.Min = 0
    HScroll12.Max = 10

    HScroll13.Value = 2
    HScroll13.Min = 0
    HScroll13.Max = 10

    HScroll14.Value = 50
    HScroll14.Min = 0
    HScroll14.Max = 100

    Percent1.BevelInner = 1
    Percent1.BevelOuter = 3
    Percent1.BevelBar = 3
    Percent1.Percent = 50

    Call HScroll11_Change
    Call HScroll12_Change
    Call HScroll13_Change
End Sub

Sub HScroll11_Change ()
    Percent1.BevelWidth = HScroll11.Value
    Label1.Caption = "BevelWidth:" & Format$( HScroll11.Value )
End Sub

Sub HScroll11_Scroll ()
    Call HScroll11_Change
End Sub

Sub HScroll12_Change ()
    Percent1.BevelWidthBar = HScroll12.Value
    Label2.Caption = "BevelWidthBar:" & Format$( HScroll12.Value )
End Sub

Sub HScroll12_Scroll ()
    Call HScroll12_Change
End Sub

Sub HScroll13_Change ()
    Percent1.BevelWidthBar = HScroll13.Value
    Label3.Caption = "BorderWidth:" & Format$( HScroll13.Value )
End Sub
```



```
Sub HScroll3_Scroll ()  
    Call HScroll3_Change  
End Sub
```

```
Sub HScroll4_Change ()  
    Percent1.Percent = HScroll4.Value  
End Sub
```

```
Sub HScroll4_Scroll ()  
    Call HScroll4_Change  
End Sub
```

## Registration Information

### Credits

PerCnt was written by James Shields. Inquiries can be sent to 71231,2066 on CompuServe, or mabry@halcyon.com on Internet. Our mailing address is:

Mabry Software, Inc.  
Post Office Box 31926  
Seattle, WA 98103-1926

### Registration

You can register this program by sending \$10 (\$15 for international orders) and your address. You can register PerCnt **and** its C source code by sending \$25 (\$30 for international orders). With your order, you will receive a copy of our manual documenting all of our controls.

For your convenience, an order form has been provided that you can print out directly from this help file.

### E-mail Discount

You may take a \$5 discount for e-mail delivery of this package (CompuServe or Internet). If you choose this option, please note: a printed manual is not included. Be sure to include your full mailing address with your order. Sometimes (on the Internet) the package cannot be e-mailed. So, we are forced to send it through the normal mails.

CompuServe members may also take the \$5 e-mail discount by registering this package in the software registration forum (GO SWREG). PerCnts SWREG ID number is 966. The source code version's ID number is 1004.

### Credit Card Orders

We accept VISA and Mastercard. If you e-mail your order to us, please be sure to include your card number, expiration date, complete mailing address, and your phone number (in case we have any questions about your order).

© Copyright 1993-1995 by Mabry Software, Inc.





## PerCnt Order Form

Use the Print Topic.. command from the File menu to print this order form.

Mail this form to: Mabry Software, Inc.  
Post Office Box 31926  
Seattle, WA 98103-1926  
Phone: 206-634-1443  
Fax: 206-632-0272  
BBS: WinDev BBS 206-634-0783  
CompuServe: 71231,2066  
Internet: mabry@halcyon.com

Where did you get this copy of PerCnt?

---

Ship to:

---

---

---

---

---

Phone:

---

Fax:

---

E-Mail:

---

MC/VISA:

---

exp.

Disk Size:

(circle one)

3½

5¼

qty ordered 

---

REGISTRATION

\$10 each, postpaid (check or money order in hard currency). Outside of North America add \$5.00 shipping.

qty ordered 

---

SOURCE CODE AND REGISTRATION

\$25 each, postpaid (check or money order in hard currency). Outside of North America add \$5.00 shipping.

## Getting Custom Controls Written

If you or your organization would like to have custom controls written, you can contact me at the following:

James Shields  
Mabry Software, Inc.  
Post Office Box 31926  
Seattle, WA 98103-1926  
Phone: 206-634-1443  
Fax: 206-632-0272  
BBS: WinDev BBS 206-634-0783  
CompuServe: 71231,2066  
Internet: [mabry@halcyon.com](mailto:mabry@halcyon.com)

You can also contact Zane Thomas. He can be reached at:

Zane Thomas  
Post Office Box 300  
Indianola, WA 98342  
CompuServe: 72060,3327

