



## ButtonStar for Windows Help

ButtonStar is a feature rich program launcher for Windows 3.1. It has been designed to replace or use along with Windows' Program Manager.

Following are a listing of topics to better help you use [ButtonStar](#).

[Getting Help](#)

[How Best to Use ButtonStar](#)

[System Menu Controls](#)

[Configuring a Button](#)

[Configuring Program Launch Options](#)

[Changing ButtonStar's Layout](#)

[Change a Button's Position](#)

[Using the Popup Task Manager](#)

[Using the Run Button](#)

[Navigating ButtonStar & Short-Cut Keys](#)

[Using Program Manager Groups](#)

[Setting a Reminder Alarm](#)

[ButtonStar Options Configuration](#)

## Configuring a Button



ButtonStar's initial setup automatically configures the first 18 buttons for you. The first two buttons (shown above) are permanent and can not be altered. The remaining pre-configured buttons are set for the standard Windows' programs and accessories. You can configure for these your own use or leave them as is.

The screenshot shows the 'Button Configuration Menu' dialog box. At the top, it says 'Button No. 19' and 'Set as Group' with an unchecked checkbox. Below this is a text box containing 'Ctrl +F5' and a dropdown arrow. The 'Program Menu Bar Title' section has a text box with 'AmiPro 3.0'. The 'Path and Program Name' section has a text box with 'Q:\AMIPRO\AMIPRO.EXE ?\*.SAM'. The 'Working Directory Name' section has a text box with 'D:\AMIPRO\DOCS'. The 'Icon File Name and Path to Attach to Button' section has a text box with 'C:\BSTAR\BBARICON\AMIPRO.BMP'. On the right side, there are five buttons: 'Browse', 'Options', 'Delete', 'Save', and 'Exit'. There is also a small icon box at the top right showing a blue 'A' with a pencil.

### 1. Configure a New Button.

Click the System Menu and select Configure a Button. The *Configuration Window* will pop up center screen. Now Click on the ButtonStar Button you want to setup. The Button Number and Current Icon will appear at the top of the menu. *Note:* You can use the keyboard to select a button by holding down the Control Key and maneuvering with the Cursor Arrow Keys.

**[Use Tip]** You can also use the Windows File Manager to drag and drop a program on a button. Then click that button with the R/H mouse button to configure the Program Title and load options.

### 2. Short Cut Keys

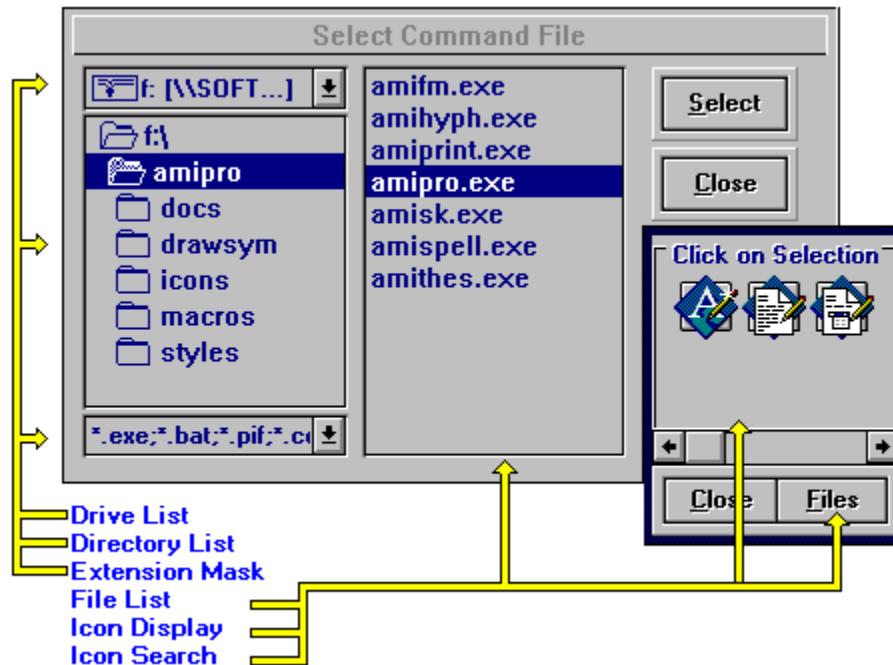
ButtonStar has 23 Short Cut or Hot Keys that you can assign to any Button (not group buttons). These Short Cut keys are active only when ButtonStar is the active window. Short Cut keys are especially useful to laptop users and with programs such as "Voice Blaster or the Windows Sound System "Voice Pilot" which allow the user to assign key strokes to an application which is activated by voice command.

### 3. Making a Group.

To create a Button Group, click the **Set as Group** check box. Next, enter the group name in the ButtonStar Title Line. You will notice a default group icon has appeared in the select icon box. You can use this icon to represent your group, or click the **Browse** button and select another. See [Configuring and Using a Group](#)

### 4. Selecting a Program

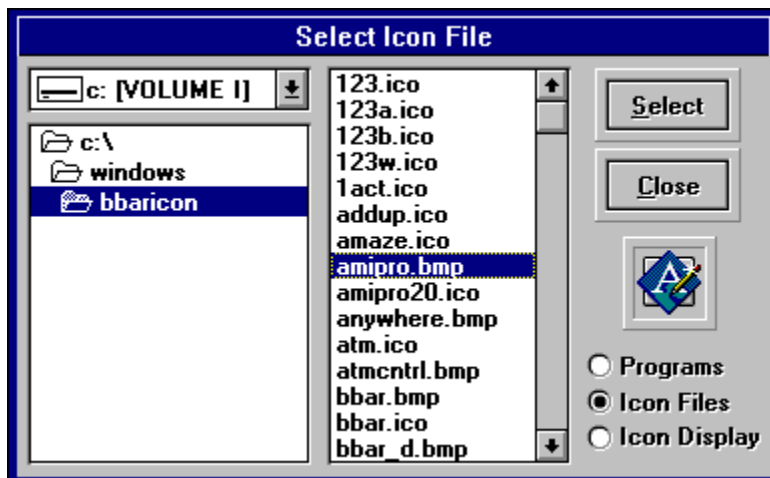
Press the **Browse** Button. A file selection box will pop up, where you select the program file you want to add to ButtonStar. Double-Click the mouse cursor on the selected file (or Click once and press the Select button). Use the **Extension Mask** dropdown list to narrow or expand the list of files shown. You can also select a non executable file like a spread sheet or word processor file to assign to a button. *ButtonStar will automatically search for a file association, and if an association doesn't exist for this file type, you will be prompted for the program name, upon saving the button configuration.*



##### 5. Select an Icon

You will then see *Icon Select Menu*, where if the selected program is a native window's program, the first 6 icons (If available) will be shown§. Click the icon that will represent this program to you. The *Select Command Window* will disappear and *Button Configuration* window will come to the fore front. The Program Name, Working Directory and Icon Path fields will be filled in with the choice you made. The final step is to type a Program Title in the top field as you want it to appear on the ButtonStar caption. This title will show on the menu bar as you pass the mouse pointer over the button.

§ **Note:** When the *Icon Display* window is displayed, you can choose from another list of icons by clicking the scroll bar or click the **FILE** button and select another file which contains icons to use.



##### Configuring a DOS Based Program

Follow the above instructions up to the point of the *Icon Select Bar*. Since a DOS program doesn't have icons embedded in it, none will show on the bar. The File select box will shift to the BBARICON directory. There you can pick from any of the icons shown and apply them to your program selection or click the **Icon Display** radio button, adjust the scroll bar and pick from any of the 102 icons located in the *MorIcons.DLL*. You can also click the **Files**

button and select another file (like PROGMAN.EXE) which contains icons to use.

### **Save and Exit Menu**

Press the **Save Button** to save your button configuration, you will notice that Icon you chose will appear on the ButtonStar. Now, pick another button to configure or press the **Exit Button** to close the Configuration Menu.

See [Configuring Other Options](#) for ButtonStar

# How To Use ButtonStar

ButtonStar for Windows was designed to make the Windows Desktop easier to use. Programs that you use most often are just a mouse click away. Program manager can be very clumsy, and it's icons have a tendency to move around.

You can use ButtonStar as your Window's Shell, instead of Program Manager. See System Menu Controls for more information.

To use ButtonStar along with Program Manager, it is more convenient if ButtonStar is loaded at the start of your windows session. There are two ways to accomplish this, either drag the ButtonStar Icon into your Program Manager **Startup** group (Windows 3.1) or add \BUTTONSTAR PATH\BDLX.EXE to the "load=" line in your Win.ini file.

## ButtonStar Screen Layout

ButtonStar's default layout is 2 rows of 18 buttons, located across the top of the screen. You can reposition ButtonStar on screen, by placing the mouse pointer on ButtonStar's Menu Bar and holding down the left mouse button. Now move ButtonStar to a new location and release the mouse button.

<b><u>1</u> Row Matrix</b>
<b><u>2</u> Row Matrix</b>
<b><u>3</u> Row Matrix</b>
<b><u>4</u> Row Matrix</b>
<b><u>6</u> Row Matrix</b>
<b><u>9</u> Row Matrix</b>
<b><u>12</u> Row Matrix</b>
<b><u>18</u> Row Matrix</b>

To change the ButtonStar layout, click the System menu and then click the ButtonStar Layout menu, and select the matrix you want.

When you exit Windows or close ButtonStar, the last screen position and Button matrix will be saved. The next time you run ButtonStar, it will be in the same place you left it.



## Using The Run A Program Button

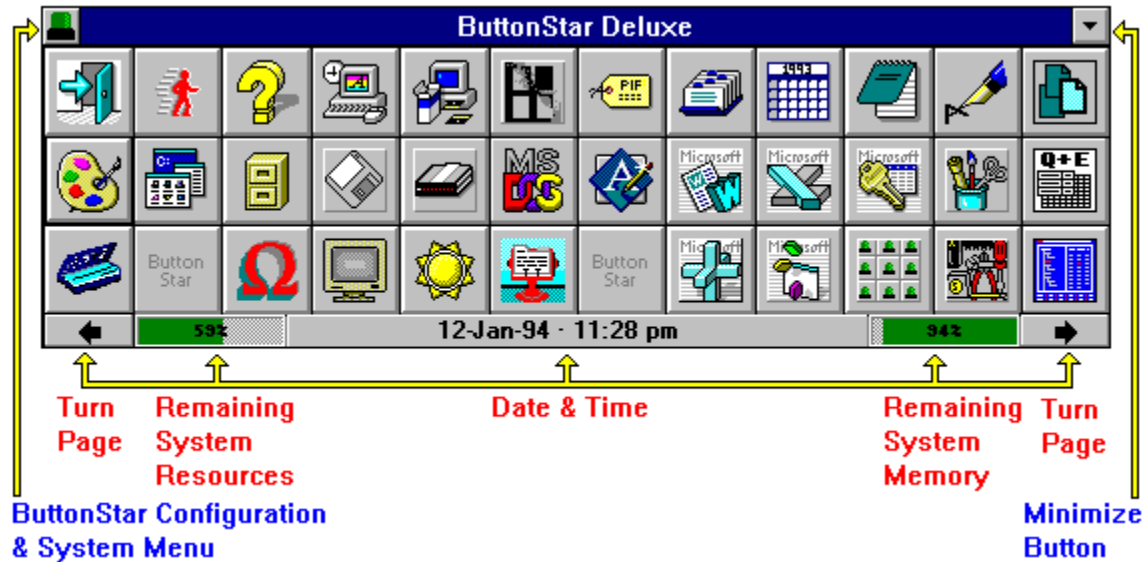


When you need to run an infrequently used program or maybe a program on a floppy disk, press the *Run A Program* button. A Drive/Directory box will pop-up center screen, where you select the drive, directory and program by clicking on the required box. Consult your Windows manual for a more detailed explanation of File Box navigation.



## Navigating ButtonStar

ButtonStar Deluxe consists of 153 icon buttons, of which 36 buttons are visible at a time. In the lower left and right hand corners are small arrows pointing in the opposite directions. The right arrow displays buttons 37 through 72, and the left button displays buttons 1 through 36. In addition, movement around the ButtonStar is possible by using combination of the Control Key and direction keys.



### Using the Key Board and Short Cut Keys:

- |                              |  |
|------------------------------|--|
| 1. Control - Home            | Move to the first button on ButtonStar                           |
| 2. Control - End             | Move to the last button on ButtonStar                            |
| 3. Control - Left Arrow      | Move one button to the Left                                      |
| 4. Control - Right Arrow     | Move one button to the Right                                     |
| 5. Control - Up Arrow        | Move up one button vertically                                    |
| 6. Control - Down Arrow      | Move down one button vertically                                  |
| 7. Control - Page Up         | Display ButtonStar page one                                      |
| 8. Control - Page Down       | Display ButtonStar page two                                      |
| 9. Control - M               | Toggle "Move Icon Position" mode                                 |
| 10. Control - C              | Configure a Button mode  |
| 11. Control - A              | Add or Edit a Popup Reminder                                     |
| 12. Control - S              | Cancel a System Idle Load Program routine                        |
| 13. Control - L              | Launch System Idle Programs Immediately                          |
| 14. Control - Alt            | Windows Screen Saver HotKey (Starts the ScreenSaver immediately) |
| 15. Escape Key               | Cancel "Move Icon Position" mode                                 |
| 16. R/H Mouse Button Click   | Reset to Main Button Bar when PM Group Tab Activated             |
|                              | Over a ButtonStar Button - Configure that button                 |
|                              | Over Windows Desktop - Displays PopUp TaskManager                |
| 17. Shift - R/H Mouse Button | Over a ButtonStar Button Toggles the "Move Icon Position" mode   |
| 18. F 5 Key                  | Toggle PM Group display bar                                      |
| 19. Shift - Down Arrow       | Minimize ButtonStar  |
| 20. Shift-Alt-M              | Minimize all open windows on the DeskTop                         |

# ButtonStar for Windows

ButtonStar for Windows was written by Mark DiBiasio. The ButtonStar for Windows program, Help File and associated files remain the property of Mark DiBiasio. One license is granted per registered user, per machine.

**Any questions or problems please contact:**

**Mark J. DiBiasio**

DataDesign Systems, Inc.  
15958-B Shady Grove Road  
Gaithersburg, Maryland 20877  
Tel. (301) 670-0818  
Fax (301) 330-5087

© Copyright 1992-1994 - Mark DiBiasio - March 12, 1994  
This Help file covers ButtonStar Version 5.3.x  
Microsoft Windows is a Trademark of Microsoft Corporation

# Configuring Program Launch Options

After you have selected a program using the BROWSE button, you can further customize this button by adding Launch options. Clicking the OPTIONS button will pop "Set Program Options" window to center box. Options can be changed at anytime. The "OK" button at the bottom of the Options screen will set your choices, while clicking the "RESET" button will remove your settings.



**Put on PopUp.** Click this check box if you would like to have this program available on ButtonStar's PopUp Task Manager. See [Using the Popup Task Manager](#)

**Launch Program in a Minimized State** option. There are many programs you may wish to start in an Minimized Icon state. **Note:** Holding the Shift Key down and clicking a button will also start an application in a minimized state.

**Prompt for Command Line** option. Use this option if you want to be prompted for a command line switch before the program is loaded. Now, when this program is launched, a query box will pop up and ask for the command line switch.

**Load with Files Box** option. Many Window's programs can be started with a command line switch. For example, say you want to load a Readme.txt file into NotePad, now you can run Notepad and use its Filebox function to load the file or can do this same thing in one motion with ButtonStar. To use this option, click the button, then select an extension mask to use from the drop down list. The mask is used to select from a list only files with a specified extension. The default mask is "\*.txt", which shows all files. You can type in your own mask or multiple masks by separating them with a semi-colon. (i.e. ? \*.txt;\*.ini;\*.ans).

The following option is available, but must be entered manually on the Button Configuration screen:

**[% switch] Launch Program with Environmental Variable** option. Network users may wish to load a program with a variable that was set during the network logon process. To use the option, just specify the variable (in upper case letters) on the "Program Name and path field" line, (i.e. F:\WPWIN.EXE F:\WPDOC%\USER%\LETTER.WP). The "%USER%" will be replaced with the environment variable.

## Program Auto-Load Options

Similar to the "Start Up" group in Program Manager, but much more powerful, you can configure any program to load or run at the beginning of your Windows session. In addition, ButtonStar Deluxe features a "System Idle Launch" option, which will only launch a designated program when your computer has been idle for 120 seconds or more. Any mouse movement will further delay the launch or interrupt one in

progress. The advantage of the "System Idle Launch" is you are not forced to wait for programs to launch, this is especially helpful to those users who are in and out Windows many times a day. There is a 20 item limit for auto-launch programs.

**Load on ButtonStar Startup** - Loads program in minimized (icon) state.

**Run on ButtonStar Startup** - Runs program in normal state

**Load when System Idle** - Loads program as an icon 120(user selectable) seconds after the last mouse movement or keystroke.

**NOTE:**

- 1)The Auto-Launching Feature is only available when ButtonStar Deluxe is the Windows Shell.
- 2)You can over-ride a System Idle launch by pressing the **Control+L** key or clicking the System menu and selecting the Over-Ride Auto Launch item. Your programs will launch immediately.
- 3)You can cancel a System Idle launch by pressing the **Control+S** key or selecting the Cancel Auto-Launch menu item on the System Menu.

# Getting Help

Any time you need this Help File.. just press the F1 Key.

Programs are executable files, ending with the extension .exe, .com, .bat, or .pif. (i.e. Command.Com)

Programs written and designed to operate in the Windows environment. DOS based will also operate under windows, but they are not aware of windows, nor do they share common functions

The term Shell refers to the main Windows control program, that is designed to allow the user to launch applications. The Default Windows Shell is Program Manager.



The Windows' Desktop is the screen background area. Currently running applications exist on top of the desktop.

The Windows' Screen Saver is the one included with Windows 3.1 and enabled in the "Desktop" section of Control Panel. 3rd Party screen savers like After Dark will not be affected by this Hot Key

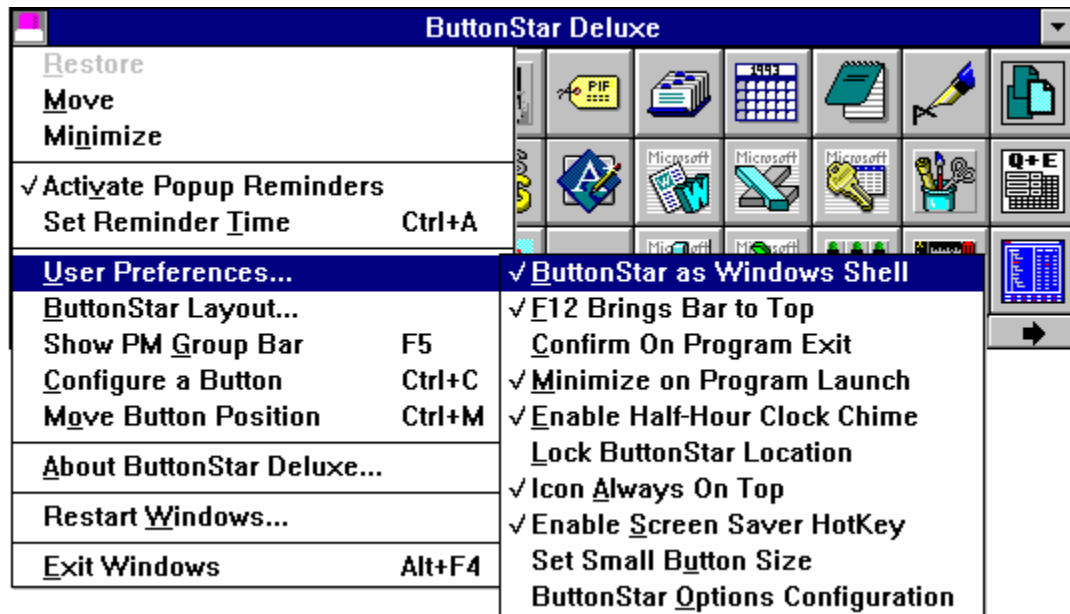
## Configuring a Group



The group is a nine button subset of a standard ButtonStar button. You can set up to nine groups which can have nine buttons each. Once a button has been earmarked as a group, you configure these buttons as you did the main buttons.

1. Click the System Menu, then select *Configure a Button*. The button setup windows will appear. Now click the Group you wish to edit.
2. The Group box will appear to the left of the *Button Setup* window. Just click the button on the group you wish to configure and follow the same procedure as configuring a standard button.
3. Remember to click the *Save* button after each configuration, then click the *Exit* button when your finished.

## ButtonStar System Menu Controls



The majority of ButtonStar's controls are located in the ButtonStar System Menu. Each menu selection will either toggle a user option or display an action window. Following is an explanation of each menu selection.

The first three Menu Items, **Restore**, **Move**, and **Minimize** are standard window functions

**Activate Alarms** - This toggles ButtonStar's Reminder alarm feature. When the menu item is check marked then any alarm reminders that are set will execute at the time and date configured.

**Set Alarm Time** - This menu selection will display the Alarm Reminder configuration windows. See [Setting a Reminder](#) for more information.

**Show PM Groups** - This menu selection will display your Program Manager groups in a tab format in place of the time/date display bar. See [PM Groups](#)

**Preferences...** - This selection will popup a second menu, where you select user preferences. The options are as follows:



**ButtonStar as Windows Shell** - This option sets ButtonStar to be the Windows Shell. De-selecting will

revert your system back to where Program Manager is the shell. When ButtonStar is the Window's Shell, terminating ButtonStar will close the current Windows session.

**F12 Brings Bar to Front** - This toggles the ButtonStar feature of bringing ButtonStar to the forefront when the F12 Key is pressed. This option is extremely convenient when you need to load another program and your current program is full screen. [You can change which Function Key will bring ButtonStar to front in the ButtonStar Options Configuration.](#) Note: This feature will not function when you have a DOS program full screen or in a window.

**Confirm On Program Exit** option. Choosing this option will toggle whether or not you will be queried before program or windows shutdown.

**Minimize on Use** option. Select this option if you want ButtonStar to minimize to an icon after a program button is clicked.

**Enable Half-Hour Chime** option. Select this option if you want the ButtonStar Deluxe to chime on the Hour and Half Hour. The default chime is a ship's bell, but you can substitute any windows "WAV" file of your prefer. Makes change in the BBAR.INI File. [\(Please Note: You must have a sound card or MicroSoft's PC-Speaker Driver installed\)](#)

**Lock ButtonStar Position** option. Select this option if you want to disable the move window capability from ButtonStar. This will prevent inadvertently moving ButtonStar off the screen. De-selecting this item will enable the user to position ButtonStar anywhere on the screen.

**ButtonStar Icon Always on Top** option. Select this menu item if you want the ButtonStar Clock icon to be visible at all times, even if the current application is full screen. This option is only effective if the Minimize on Use option is selected or you have manually minimized ButtonStar.

**Enable Screen Saver HotKey** option. Select this item if your want to disable ButtonStar's Screen Saver Hot Key. This will only effect the current Windows session, the Hot Key will be active the next time you start Windows. The Hot Key combination to immediately engage the built-in Screen Saver in Windows 3.1. The Windows' screen saver must first be activated using the Control Panel\Desktop configuration panel. Pressing the Control & Alt key (Default selection) together will engage the Screen Saver. [\(Note: due to an idiosyncrasy of the Windows screen saver, you may notice that the screen saver will NOT engage automatically after the allotted time interval of in-activity when ButtonStar is in an icon state.\)](#)

**Set Small Button Size** option. Select this option if you prefer to have ButtonStar displayed with small buttons (slightly larger than the embedded icon). [Note: This option will only appear with screen resolutions of 800x600 or greater.](#)

**ButtonStar Option Configuration** menu selection displays the option screen. Besides the options list above, you can change the Snooze Alarm delay, Screen Saver Hot Key, Time Display format, Clock Chime sound file, and Button Bar to front key. See [ButtonStar Options](#)

**Configure A Button** - This selection will popup the Button configuration window. See [Configuring a Button](#) for more information.

***[Use Tip] Clicking the Right Mouse button while the mouse cursor is over a button will bring the Configuration screen up for that particular button.***

**Move Button Position** - This selection will allow you move the location of a button from one spot to another or to a group. See [Change a Button's Position](#) for more information.

**ButtonStar Layout** - This selection will change the ButtonStar Layout matrix. See [Changing ButtonStar's Layout](#) for more information.

**About ButtonStar Deluxe....** - This menu selection will display author, license and serial number information, as

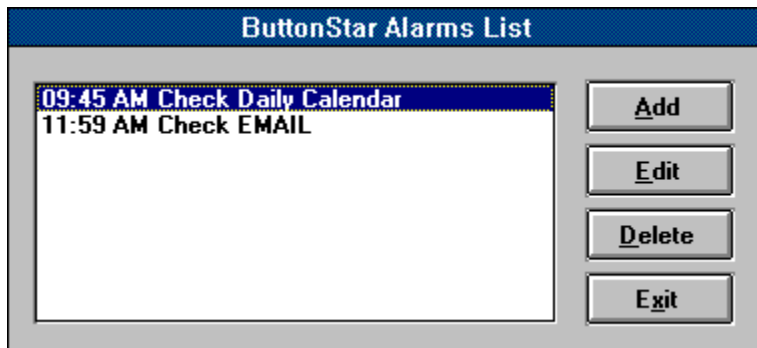
well as the ButtonStar Version.

***Restart Windows*** - This menu selection will restart Windows without returning to DOS.

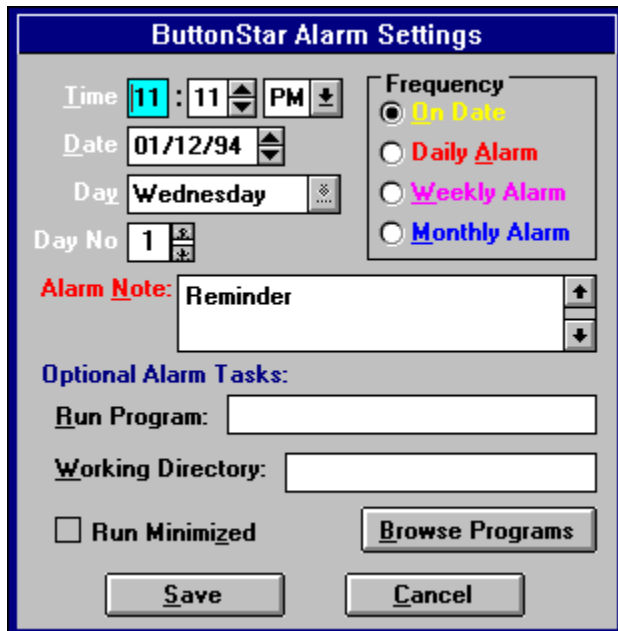
***Exit Windows(ButtonStar)*** - Depending on whether or not you have selected "ButtonStar as Windows Shell" and/or "Exit Windows on Exit" in the Preferences menu, this menu item will close the ButtonStar program or windows. This is a fast exit. *[Use Tip] Double-Clicking the System Menu tab will terminate the program or windows.*

## Setting A Reminder Alarm

ButtonStar Deluxe Alarm feature allows you to set an unlimited number of Pop Up reminders. These reminders can be as simple as note to remind you of an important meeting, or to run a program at given date and time like a file backup program or Email retrieval. A reminder can be as a daily occurrence, weekly, monthly event or for a date and time somewhere in the future,



**Setting up an Alarm.** Click the System Menu and select **Set Alarm Time**, (the Activate Alarm option must be checked) and the Reminder window (shown on left) will pop up. This window allows you to add, edit, and delete a reminder.



To add a new reminder, click the **Add Button** or edit an existing setting, click the item on the list and then click the **Edit Button**. The Alarm Setting window will popup and display a blank entries or the existing settings.

**The Optional Alarm Tasks.** This option allows you to execute a program at specific date and time, or as a daily event. Enter the program name and path manually or click the **Browse Program** button select your program using the directory list boxes.



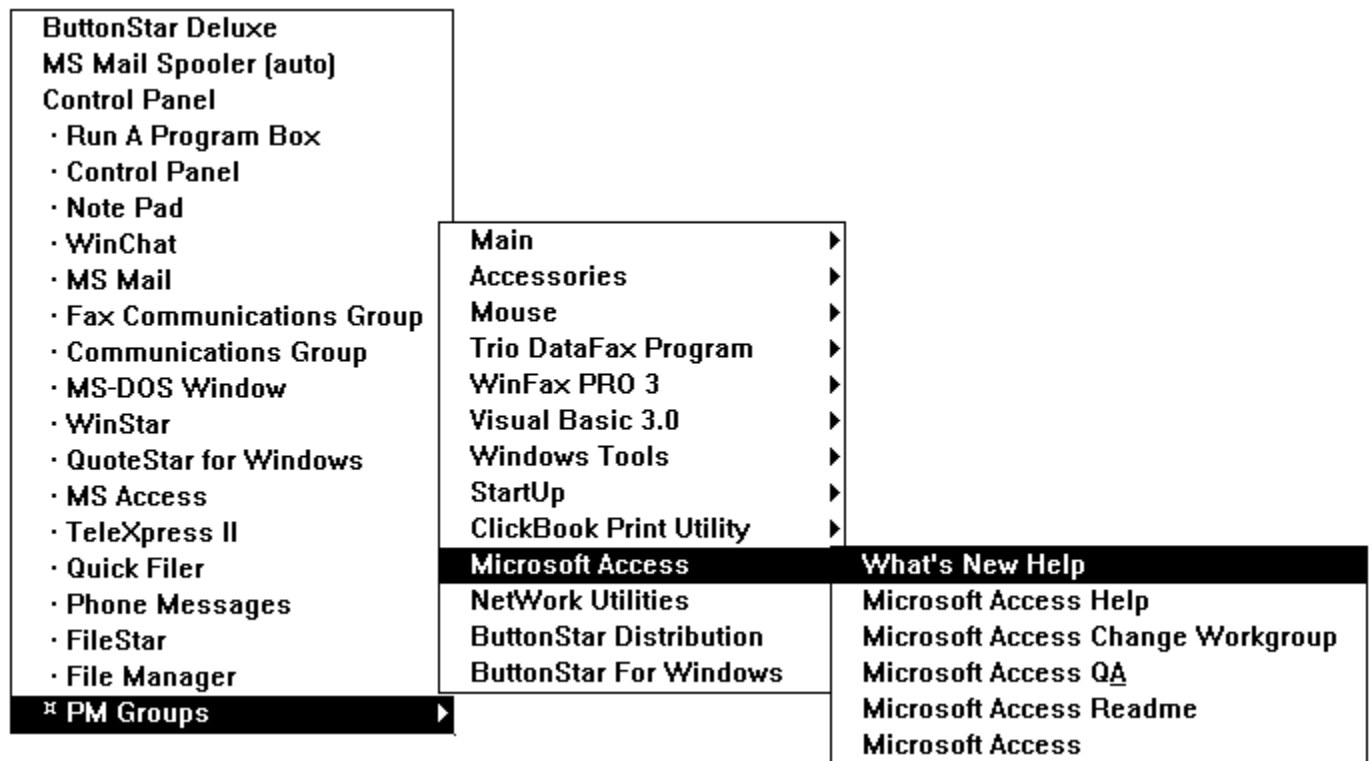
**Snooze Alarm.** When the Reminder Alarm event occurs a box will pop up center screen. The note you attached to the event will be displayed. Click **OK** to acknowledge the reminder or **Snooze** to have the alarm sound again in 5 minutes. The default snooze setting is 5 minutes, but you can change in the ButtonStar Options Configuration screen.

**Note:** The alarm event will only sound if ButtonStar is active. Should you load ButtonStar after the event the alarm will not sound.



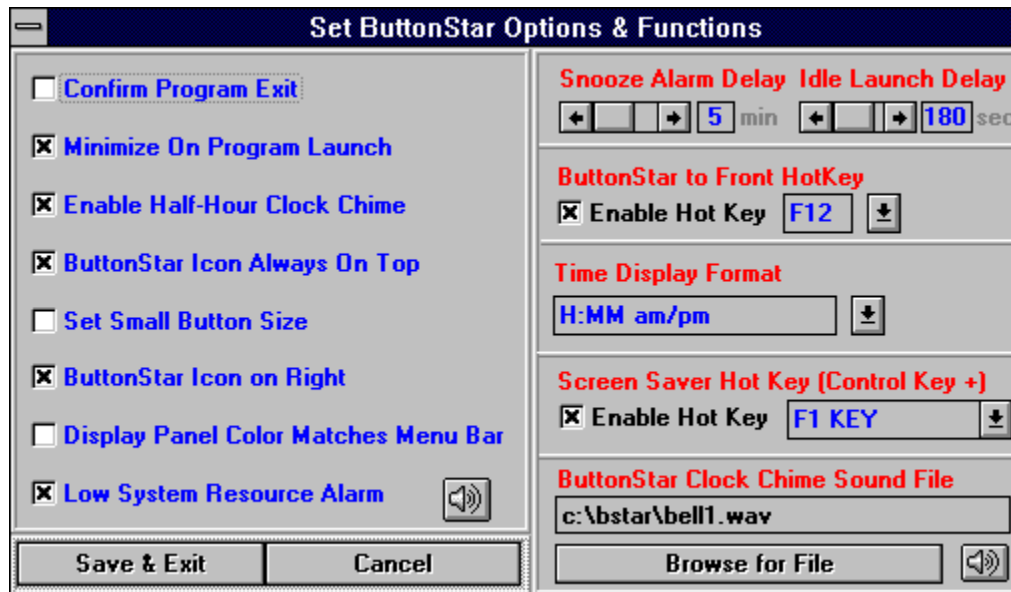
## Using the PopUp Task Manager

\* Note: ButtonStar's Popup TaskManager is accessed by a single R/H mouse button click over the Windows desktop, not to be confused with the Windows Task Manager that is accessed by Double Clicking the L/H mouse button over the desktop or pressing the Control - Escape keys.



Clicking the Windows Desktop with R/H mouse button will display ButtonStar's Popup TaskManager. This popup menu will display up to 20 currently running programs/windows or programs that were set to be displayed as quick launch programs in the Button Configuration. The Popup TaskManager shows active windows first then popup programs. Remember the Quick Launch programs are designated with a dot to the left of the program name. The last item on the Popup TaskManager will always be **PM Groups**. Clicking this menu selection will bring up a secondary menu with all your Program Manager Groups listed. Click the desired group and a third menu will pop up showing all the programs set up in that group. Now click the item you wish to launch.

## ButtonStar Options & Function Configuration



ButtonStar Options Configuration allow you to change most of the User Preferences at one time, in addition to Functions like the Button Bar to Front and the Clock Chime sound file.

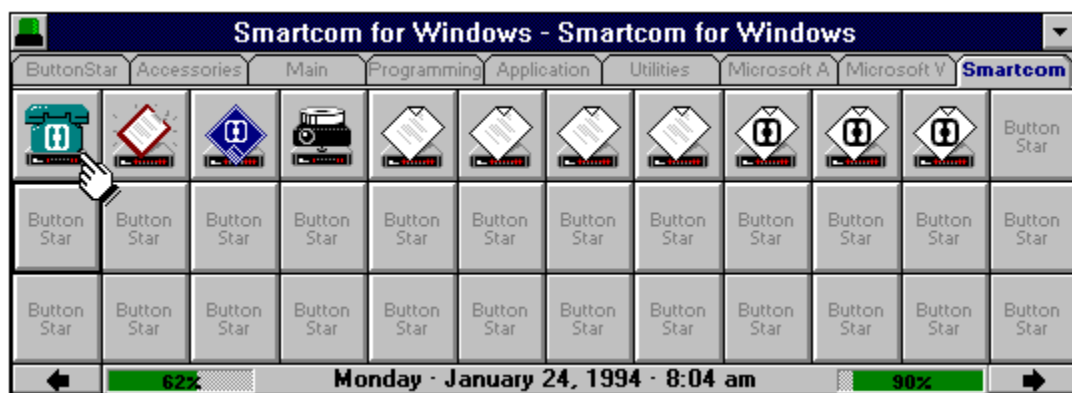
The **Low System Resource Alarm** option will sound an alarm when System Resources fall below 22%. Click the speaker button to sample the alarm sound.



## Program Manager Groups



This ButtonStar Deluxe feature allows the user direct access to the programs setup in Program Manager. ButtonStar will display all the active groups in a tab format as shown above. To display a group just click the tab, ButtonStar will show the programs and icons of the selected PM group on main button bar. To restore ButtonStar's buttons, just click the Main ButtonBar Tab or [Press the Escape Key](#).



ButtonStar will show only enough group tabs to fill the Tab Bar. Click the Page Arrows to show the remaining PM Groups.

To launch a program -- just click the program icon.

**[Use Tip:] Every time you toggle the F5 key, ButtonStar re-reads the PM Group files so any changes to Program Manager will be up to date. This is especially useful to network based PM Groups.**

please note: changing your Windows display drivers will necessitate your running Program Manager to update the

program icons to the new screen resolution or color resolution.

