

Too Cool Tool Cube Rev 1.2

The Too Cool Tool Cube from A Priori Software is a launch pad with an difference -- it has multiple faces to show to the user, just like a cube. The first two tools on the tool cube allow rotation of the faces to show the different groupings of tools so that you can work like you want to work!

Click on the items below for help on using the Too Cool Tool Cube

[Installing The Tool Cube](#)

[Adding a Tool](#)

[Deleting a Tool](#)

[Changing the Icon](#)

[Configuring the Tool Cube](#)

[Configuring a Single Tool](#)

[Renaming a Cube Face](#)

[Adding a new Cube Face](#)

[Deleting a Cube Face](#)

[Changing the Button Size](#)

[Running a Program which is not an Installed Tool](#)

[Quitting Too Cool Tool Cube](#)

Additional Information can be found by clicking the mouse on the topics below:

[Changes in this Revision](#)

[Limitations and Warranty](#)

[Registering Your Copy](#)



[About A-Priori Software](#)

Installation

Run the Setup program included with the files. It will install the program and the necessary custom controls.

If you have the program and associated files without the setup program, then copy the VBX files to your SYSTEM directory under your Windows directory. Copy the executable file cube3.exe and all other files to the directory of your choice. Once you run it, it will create a directory under its current directory to store program icons that it uses for display.

If you want it to come up whenever you start windows, add the file to your Windows StartUp group.

Adding a Tool

There are two means for adding tools:

- n Drop the tool from the file manager

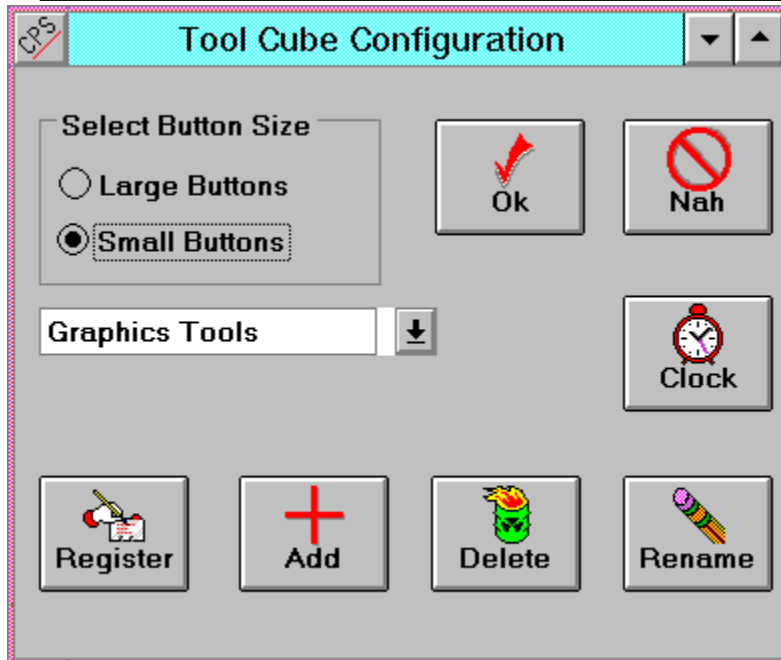
If you bring up the file manager, click on an executable file, and move the cursor while holding down the left mouse button, this is called dragging. You can drag a file from the file manager to the tool button. Releasing the button is called dropping. After you drop a tool on the selected tool button, it will be added to that button. Thereafter pressing on the button will activate that tool.

- n Click on an unused tool button

If you click on an unused tool button, a browse dialog will appear and allow you to track down the file you wish to add. Click on OK when you have selected the file you want. Clicking on CANCEL will abort the procedure.

[See Configuring the Tool Cube](#)

Configuring Too Cool Tool Cube



The configure button (at left) brings up the configuration dialog (above). From this dialog you can:

- n Register your copy of Too Cool Tool Cube
- n Add a new Cube Face
- n Delete a Cube Face
- n Rename an Existing Cube Face
- n Change the Button Size
- n Select the currently visible cube face
- n Toggle the titlebar clock on and off

Deleting a Tool

The easiest way to delete a tool is to bring up the Tool Configuration Menu. Select the Delete File Association option.

Another way to delete a tool, move the focus to the tool to be deleted and press the DEL key. The focus can be moved by either clicking on the tool button and moving the cursor off the button before letting up, or using the cursor keys to highlight the tool button desired.

You will be prompted to make sure its OK before the tool is actually deleted.

[See Configuring a Single Tool](#)

Configuring a Single Tool

To configure an individual tool, position the mouse cursor over the selected tool, and click the right mouse button. This brings up the Tool Configuration Menu.

From here you can

- n Delete the tool

This option deletes the tool association and DOES NOT delete the executable file from the disk.

- n Change the Tool Properties

This option displays a browser box from which you may select an EXE or a DLL file which contains one or more icons. Then you may select any icon within the file to be used for the displayed icon for the tool.

- n Bring up the "About" dialog box.

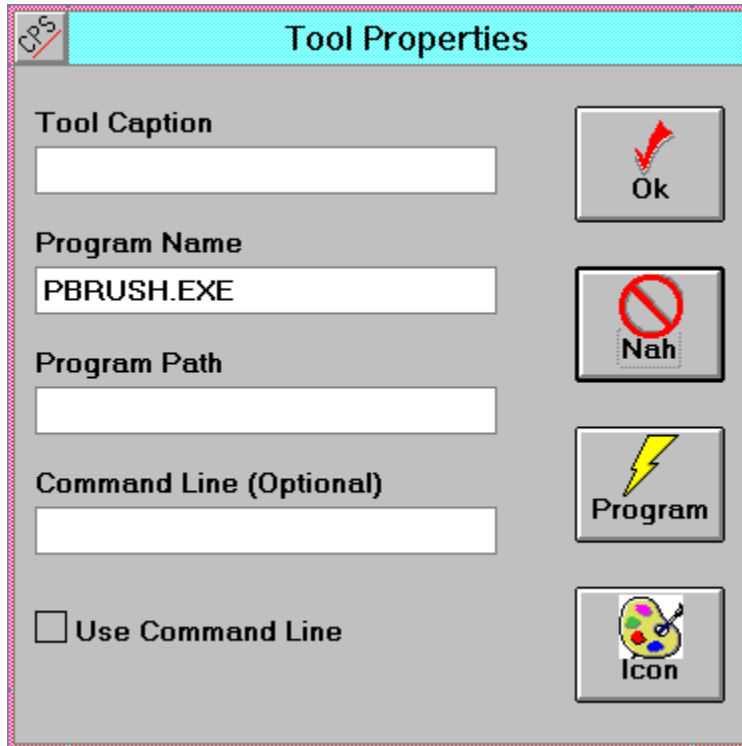
This option displays an informative dialog box with the revision number for the Too Cool Tool Cube program you have.

[See Tool Properties](#)

[See Command Line](#)

Tool Properties

The Tool Properties Dialog is brought up by positioning the cursor over the desired tool and clicking the right mouse button, and then selecting Tool Properties from the pop up menu.



Tool Properties

Tool Caption

Program Name
PBRUSH.EXE

Program Path

Command Line (Optional)

☐ Use Command Line

Ok

Nah

Program

Icon

From this dialog, you can

- n Change the program either by clicking on the Program button to bring up the file browser or by typing in the Program Name and path
- n Add an optional command line to be executed whenever the tool is executed. The Command Line text field defines the default command line. To activate the feature, click on the Use Command Line check box.
- n Change the icon by clicking on the Icon button to bring up the Icon browser.
- n Enter a tool caption to be displayed (instead of the program name) when the cursor is positioned over the tool.

Clicking on the OK button retains these changes while the Nah button discards them.

[See Command Line](#)

Command Line

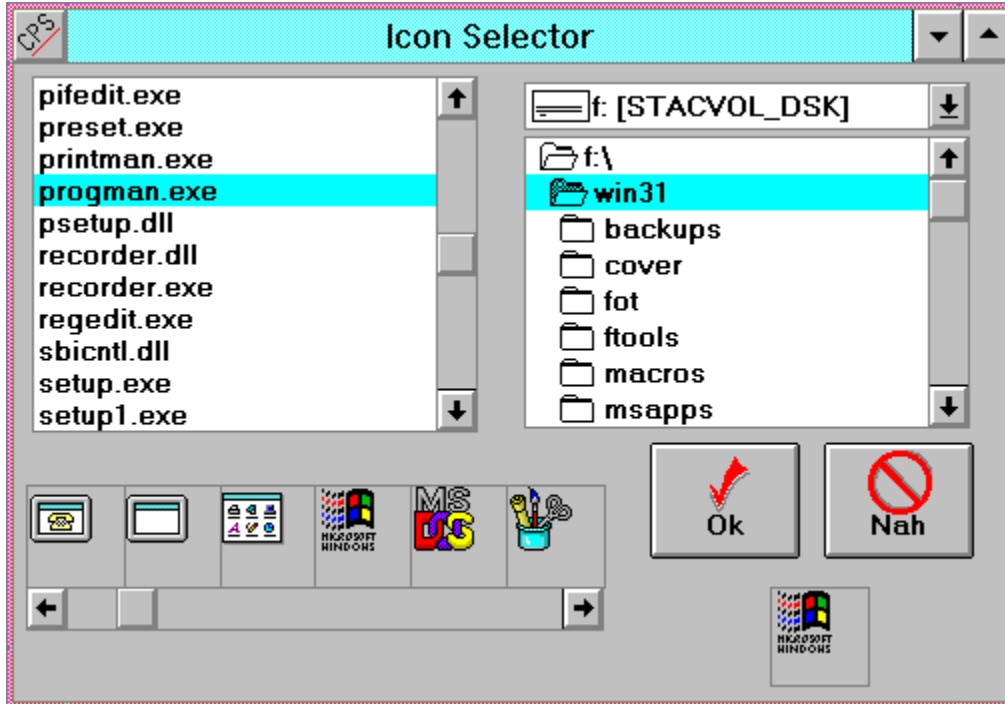
The Properties Dialog allows you to customize the execution of a tool by permitting a command line to be added. Fill out the Command Line text box with any default parameters for your program.

To enable the feature, be sure to click on the Use Command Line checkbox.

[See Configuring a Single Tool](#)

Changing Icons

To change an icon, bring up the Tool Configuration Menu. From there, select "Properties." This brings up the Tool Properties Dialog. From there, click on the icon button to see the Icon Browse Dialog box:



The file boxes allow you to set the drive, directory and file desired. When you see the correct file, double click on the filename to select that file. When you do so, the icon banner will display the icons available within that program. The scroll bars will allow you to see move icons if the file contains too many to display.

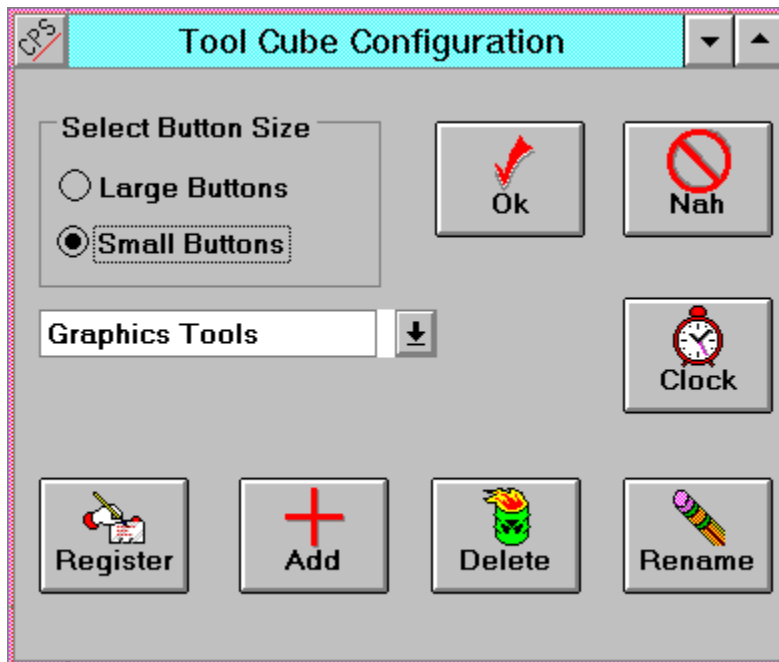
Once you see the icon you want, click on it in the icon banner and it will be displayed below the OK button. To accept your choice, click on the OK button. To abort at any time, click on the NAH button.

Some of the icons within the PROGMAN.EXE program provided with windows are shown in the example above.

[See Configuring a Single Tool](#)

[See Tool Properties](#)

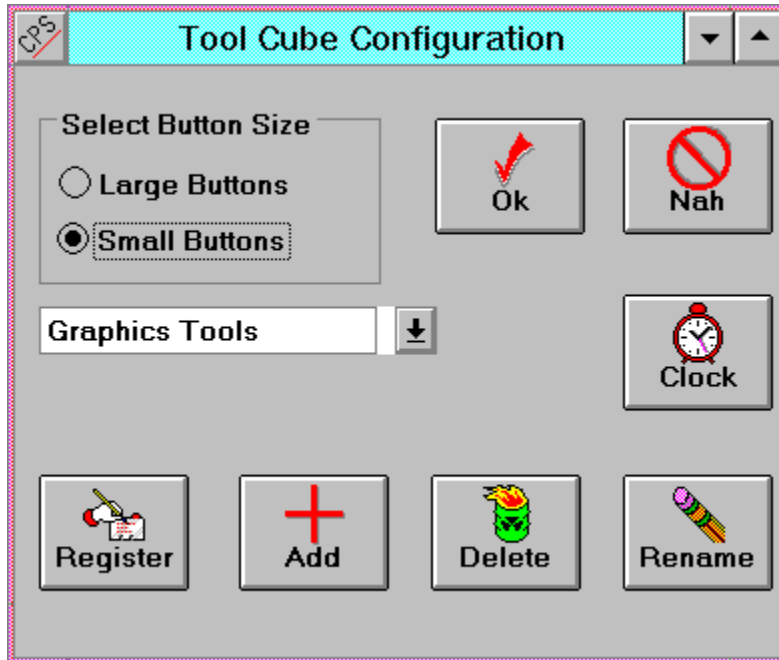
Adding a Cube Face



Adding faces to the cube is easy. The fourth button is the configuration button. Click on that button and the configuration dialog appears. The click on the Add button on that dialog and you will be prompted for the name of the tool cube face. Generally, the best approach is to use functional grouping so you might have tool faces with names like "Word Processing Tools", "File Management Tools", and "Mathematical Tools".

[See Configuring the Tool Cube](#)

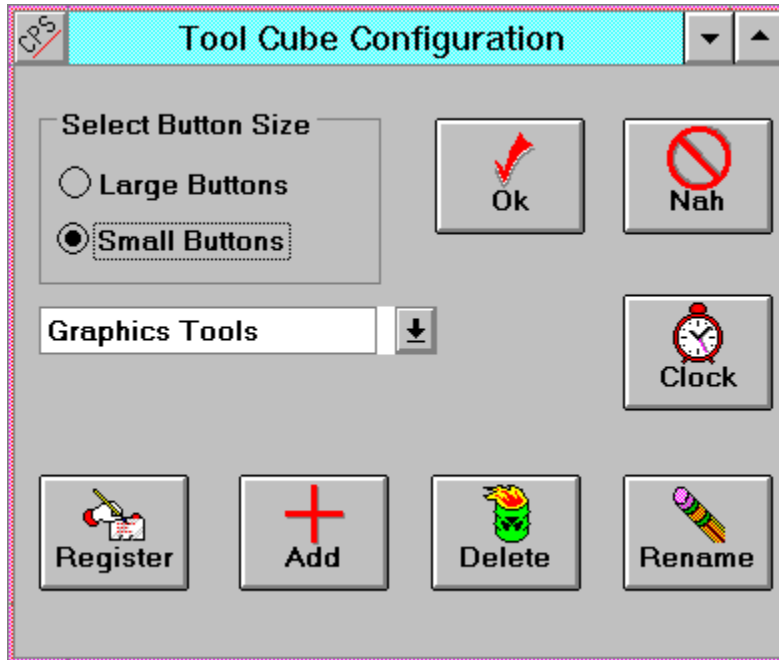
Deleting a Cube Face



Deleting a Cube face is easy. Click on the Configure Tool (Fourth Button) and select the face to delete from the list box. Click on the Delete Face button. You will be asked if you're sure. If you are, click on OK, and the face will be deleted. You cannot delete a face if only one exists.

[See Configuring the Tool Cube](#)

Changing Button Size



The Configure Tool allows you to set the button size. Select it (it is the fourth tool) and then use the mouse to select the desired button size.

[See Configuring the Tool Cube](#)

Special Actions



The special actions button (the third button) allow you to:

- n Run a program which is not a tool
- n Quit the Too Cool Tool Cube
- n Register your copy of Too Cool Tool Cube
- n Return with no action
- n Exit Windows
- n Exit and Restart Windows
- n Run a Windows Applet, such as the Windows Calculator, Notepad, File Manager, Control Panel, or Windows Write.

The dialog box looks like this:



Running a Non-tool Program

If you click on the Launch App button, you are presented with a file browse box to track down the executable file you want to run. Once selected, clicking on Ok executes it, while clicking on Cancel ignores the file selection.

Changes in this Revision

- n Titlebar clock - available from the configure menu (4th tool button). If enabled, a small clock appears on the left side of the active window. The Clock button on the configure dialog toggles the clock on and off.
- n The Launch button (3rd one on each screen) also now launches common Windows apps, such as the file manager.
- n ICO (icon) files may now be used to customize icons from the icon browser.
- n PIF files may be browsed for associating with a tool button.
- n Resizing algorithm improved. The cube now does a better job of determining the number of buttons to display.
- n Icon size problem fixed. Icons loaded from the Icon Browser were the wrong size. This is fixed.

Other recent additions include:

- n Tool identification is improved. The Cube now displays the name of the tool (or its caption) when the cursor is over the tool, provided that the tool has the focus.
- n Tool Properties box added for more control over tool execution.
- n Tools may now have command line parameters.
- n Tools may now have captions displayed instead of program names.
- n Some minor problems with adding, deleting, and renaming faces have been fixed.
- n A Priori logo comes up for a brief period when the tool is started.

Limitations and Warranty

There is no warranty whatsoever on this software. This software has been checked for errors and contains no known errors. However, if some error or feature should cause any damage A Priori and its agents are not liable. Your use of this software constitutes an agreement to the effect that the user assumes all liability for any and all damages from the use of this software.

If you disagree with the license agreement, you are prohibited from using the software and its use in that case is a violation of law.

Should you discover a problem with the software or a feature you would like changed or added, please contact us, and we will consider it.

Registering Your Copy

Registering your copy of Too Cool Tool Cube is easy and cheap. Just send \$15 + 5.00 for shipping and handling to:

A Priori Software

5409 North Pass

McFarland, WI 53558

(608) 838-6189

Compuserve ID: 70673,2715

and we will send you a copy of the latest version when it appears. You will also get technical support should it be required. Most of all, you'll get the satisfaction for paying for quality software that makes your life easier.

A Priori Software



A Priori Software specializes in:

- n Numerical Analysis
- n Scientific Computing
- n Object Oriented Software Analysis and Design
- n Neural Networks and Fuzzy Logic
- n Real Time, High Reliability Embedded Systems

A Priori Software does both training and consulting. We can be contacted at :

A Priori Software
5409 North Pass
McFarland, WI 53558
(608) 838-6189
Compuserve 70673,2715

Using A Tool

Once a tool is installed in the Too Cool Tool Cube, it can be run by:

- n Positioning the cursor on the tool and click the left mouse button
- n Dragging a file from the file manager and dropping it on the tool. This invokes the tool with the dragged file as a parameter. Dragging README.TXT to the NOTEPAD tool, for example, runs NOTEPAD and loads the file README.TXT (assuming you have installed NOTEPAD.EXE as a tool). If the tool is not associated with a program file, then this procedure will not work.
- n Using the keyboard arrow keys move until the desired tool is highlighted, and then press the <ENTER> key.
- n If the Use Command Line option on the Tool Properties Dialog is checked then before your tool is executed, you are prompted with the default tool command line (also defined on the Tool Properties Dialog) with the option to change it. Pressing OK executes the tool with the edited command line; Nah button using the default command line with no changes.

A Priori Software

Developers of fine scientific, numeric, and object oriented software since 1980.

Tool Configuration Menu

This menu is brought up by positioning the mouse cursor over the desired tool and clicking with the right mouse button.

