

ARIS Toolbar

for Microsoft Windows

Version 1.2

ARIS Informations-Systeme
Parkstr. 2
D-85646 Anzing
Germany
Phone: +49 8121-4562-4
Fax: +49 8121-4562-5

Document release date: February 14, 1994
Printed in Germany
Document TOOLBAR.DOC

Information in this document is subject to change without notice and does not represent a commitment on the part of ARIS. The software described in this document is furnished under a licence agreement or nondisclosure agreement. The software may be used or copied only in accordance with the terms of the agreement. It is against the law to copy the software on any medium except as specifically allowed in the license or nondisclosure agreement. No part of this manual may be reproduced or transmitted in any form or by any means, electronic or mechanical, including photocopying and recording, for any purpose without the express written permission of ARIS.

(c) 1994 Alexander Riedel Informations-Systeme
All rights reserved

Microsoft Windows is a trademark of Microsoft Corp.

TABLE OF CONTENTS

1. Introduction	4
2. Installing programs	4
3. Starting programs	7
4. The main menu	7
5. The properties menu	9
6. Using ARIS Toolbar as a Drag&Drop client	9
7. Saving the configuration	10
8. Files installed by ARIS Toolbar	10
9. Error Messages	10

1. Introduction

One of the most used keys in Windows probably is the ALT-TAB combination to switch back to the Program Manager in order to run another program. The smaller your screen is, the more often you use this. The ARIS Toolbar is intended to relief your thumb and index finger from pressing ALT-TAB to often. Users that know the Next Step Operation System probably recognise this at once.

The ARIS Toolbar is a narrow window on the very right side of your screen. It has a variable amount of buttons where you can install your most used programs. The amount of buttons available depends on the screen resolution you use (i.e. 19 button at 1024 x 768). As ARIS Toolbar per default always stays on top of all other windows, these programs are no further away than a simple mouse click. It is recommended to install the ARIS Toolbar in the autostart group of Windows to run it immediately after Windows is started.

2. Installing programs

After installation and the first start ARIS Toolbar shows you a number of empty buttons. The top button (the ARIS logo) is used to activate the main menu which is described later.

You now have to install your favorite programs on this buttons. For that purpose you have to choose between two methods.

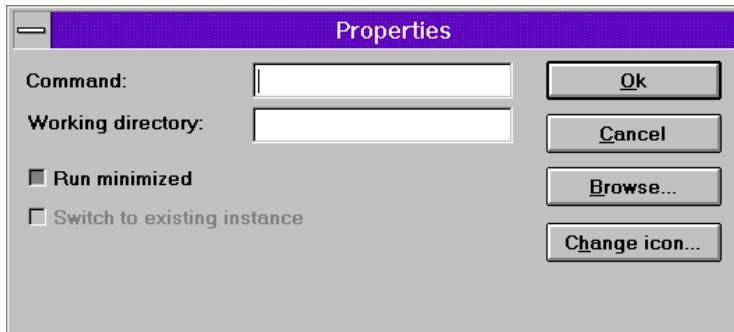
- Drag an executable file (EXE, COM, PIF) from the Windows File Manager to the button where the program should be installed.
- Click with the right button onto a button and select "Properties..." from the appearing menu.

The first method is the easiest way to install new programs. You simply select the main executable file of a program from the File Manager, drag it with the mouse onto a button and drop it there. ARIS Toolbar installs the dropped program on this button, the working directory will be the directory where the executable file resides and the icon will be the first icon found in that file. For DOS programs, which have no icons in the executable file, an icon of PROGMAN (the Windows Program Manager) is used.

If you are not sure which executable file belongs to an application and where it is, you can look it up in the "Properties..." dialog of Program Manager. To view the properties of a program in Program Manager, select the icon of the program and press Alt + ENTER.

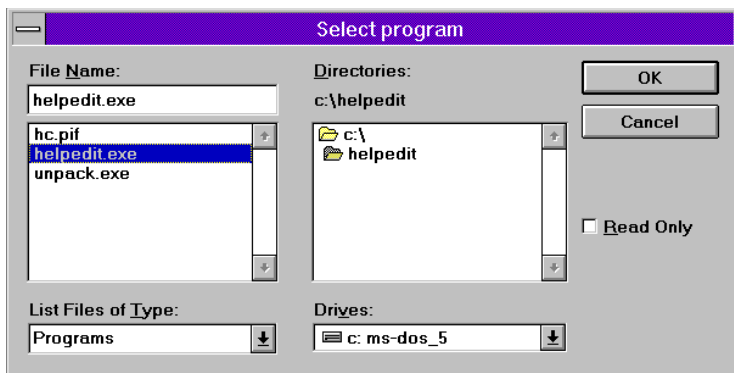
ARIS Toolbar Version 1.2

The second method is quite similar to that used by the Windows Program Manager. The properties dialog as shown below allows you to point and shoot to a program file. This dialog was designed to be as near to that of the Windows Program Manager as possible, so that you should feel familiar with it at once.



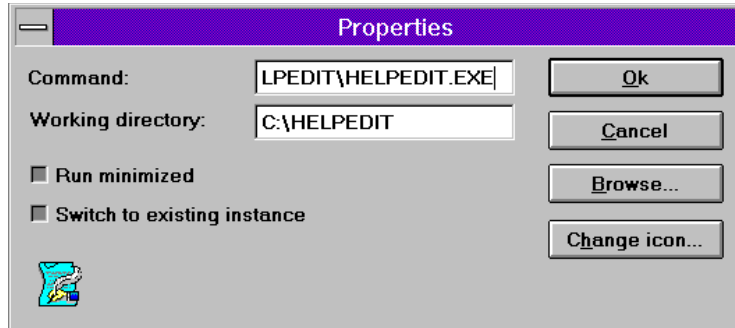
You can either type the name of the executable file into the field labelled "Command" (please use the full name with drive and directory) or you can press the "Browse..." button.

This pops up a new dialog box, where you can easily browse through the directories of your hard disk(s) and select the desired program file. A sample of this browse dialog is shown below.



ARIS Toolbar Version 1.2

After you selected a file and pressed the OK button, the properties dialog shows you what ARIS Toolbar filled into the fields. The current icon is shown in the lower left corner of the dialog box like in the sample below.



You may now change the contents of one or more fields in order to apply command line parameters to the command or to specify another working directory. If you want to start a program as an icon, check the "Run minimized" box.

Sometimes you may like to get an already started program activated again and brought to the foreground if its window is obscured by other windows rather than started it a second time. By checking the "Switch to existing instance" box, ARIS Toolbar will first look if the selected program is already running. If so, this program will be activated rather than launched again. If this program is not yet running, ARIS Toolbar will start it as usual.

Please note that this feature is only available for Windows programs and not for DOS programs. When you have a DOS program installed on a button of ARIS Toolbar the "Switch to existing instance" box will be greyed and inactive, indicating that this option is not available.

For changing the icon of a program you have to press the according button ("Change icon...").

ARIS Toolbar Version 1.2

A dialog as shown below allows you to select one of the icons in the executable file. The icon is taken from the program file itself per default (or from PROGMAN.EXE for DOS programs) but you may select any other file containing icons. Either enter the name of the file into the first field or use the browse button to select another file.

Icons are usually located in file with the extensions EXE, DLL or ICO. Quite a lot of icons are available from the files PROGMAN.EXE and MOREICONS.DLL which are part of Microsoft Windows and can be found in the Windows directory.



3. Starting programs

Starting programs from the ARIS Toolbar is really easy. Simply click onto the icon once (no double-click) and the corresponding application is up and running. As ARIS Toolbar always uses the fully qualified name of a program to launch it, there is usually no searching around on your hard disk in order to find the program's file in the PATH.

As ARIS Toolbar uses only single clicks to start a program instead of double-clicks, it is also an adequate tool for handicapped people which may not be able to click twice fast enough.

As already described in chapter two, ARIS Toolbar is capable of detecting an already running instance of a Windows program. If you have selected "Switch to existing instance" in a program's properties ARIS Toolbar will always first look if the program associated with the selected button is already running. If found, this program will be activated and brought into foreground even if it is iconized or obscured by other windows.

4. The main menu

The main menu of ARIS Toolbar appears whenever you click onto the ARIS icon on top of the toolbar with either the left or the right mouse button. It contains the following items:

- Switch to...

Selecting this topic activates the Windows task manager. This allows you to switch to another program that is already running.

- Iconize

This makes ARIS Toolbar minimize itself, that is only the ARIS icon appears on the bottom of your screen. Please note, that if ARIS Toolbar is configured as "Always on top", the icon will also float above all other windows.

- Always on top

This topic determines if ARIS Toolbar is meant to stay above all other windows or not. A check mark in front of this topic indicates the current status, if it is there, ARIS Toolbar stays on top, if not, it can be covered by other windows.

- About

This menu topic provides some information about the version of ARIS Toolbar you have and how you can contact ARIS for support, questions or suggestions.

- Exit Windows

This function causes Windows to immediately end the current session, provided that there are no other tasks that refuse this. A DOS box for example may interfere with this depending on your configuration. Please note that there is no further prompting such as done by the Program Manager of Windows.

- Restart Windows

This topic provides basically the same function as "Exit Windows" but restarts Windows at once after it has been terminated. This function is useful if you experienced a crash in a program in order to get a stable environment again.

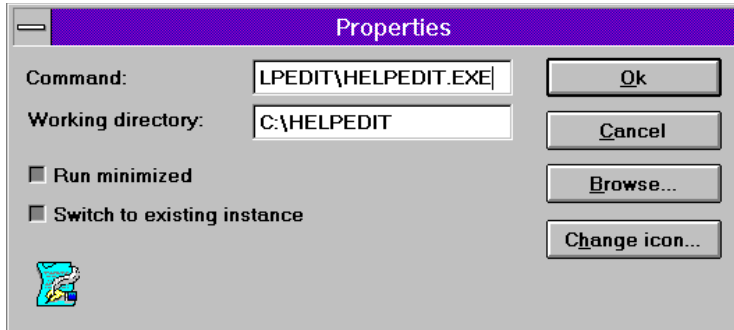
- Exit

This topic finally allows you to exit ARIS Toolbar if you wish to do so.

5. The properties menu

The properties menu shows up whenever you click on a button of ARIS Toolbar with the right mouse button. In this menu there are three topics: "Properties...", "Delete button" and "Insert empty button". The latter may be grayed and inactive, which indicates that ARIS Toolbar is not capable of inserting an empty button because all available buttons are associated with a program.

By selecting the topic "Properties..." you get a dialog shown like that in the example below.



For a full description of this dialog please refer to chapter 3.1 (Installing program). There you will find all information concerning the properties of a button.

The topic "Delete button" removes the button and the associated data from the ARIS Toolbar and all buttons below this button, if any, move up one place.

By inserting a button all buttons, including the current one, move down one position and the current button will be empty. The properties dialog for this empty button will pop up at once in order to allow you to associate it with a program. If you choose to cancel this operation the newly inserted button will be deleted.

6. Using ARIS Toolbar as a Drag&Drop client

ARIS Toolbar is a drop client in two ways. First you can drop program files onto buttons as described in chapter 3.1 to install them. Additionally you can drop any file dragged from a drop server (such a Windows File Manager, ARIS File Finder or ARIS WinGREP) on a button of ARIS Toolbar. It will start the program associated with the button and supplies the dropped filenames as parameters to that program. Using this technique you can easily drop files on a programs icon even if it is not a drop client.

Please note that if you drop files on a button of ARIS Toolbar the associated program is started with the names of the dropped files as parameters even if you selected "Switch to existing instance" in the program's properties.

7. Saving the configuration

ARIS Toolbar saves its configuration automatically when necessary. Whatever you do, exit ARIS Toolbar, exit Windows or restart Windows, the configuration is saved if anything has changed after startup.

8. Files installed by ARIS Toolbar

This information is provided to make it easier to eventually uninstall ARIS Toolbar. During installation only to files will be copied to your hard disk:

- TOOLBAR.EXE, which is the program file of ARIS Toolbar will be installed in your Windows directory.
- CTL3D.DLL, a dynamic link library needed for the 3D look of the dialogs of ARIS Toolbar will be copied to the SYSTEM subdirectory of your Windows directory if it is not yet existing or if an older version of this file is detected. As this file is also used by many other programs you should be careful in deleting it when you eventually uninstall the ARIS Toolbar.

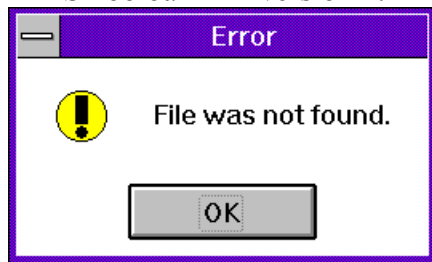
A third file, ARISGR0.GRP is created by ARIS Toolbar at run-time. This file is used to store the configuration of ARIS Toolbar. It will be updated every time you exit either ARIS Toolbar or Microsoft Windows if you changed the configuration of the Toolbar.

9. Error messages

This chapters shows all error messages that may occur if ARIS Toolbar is not able to start a program.



The memory requested of an executable file can not be satisfied. This either results of a lack of free memory or of the executable file being corrupted. Close some running applications and check your virtual memory settings, the retry to start this program. Contact the vendor of the software if the problem persists.



The program file stored in the button's properties was not found. Check the spelling in the properties of the associated button and, if found correct, check if you accidentally deleted the program file.



The properties for a button are pointing to a directory that does not exist. Please check the spelling of the program's name and path or if you have deleted this software.



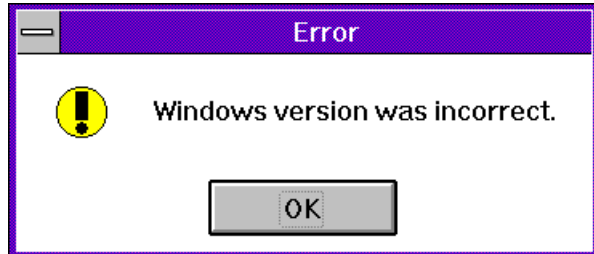
If the program you attempted to start is located on a network drive make sure that you own sufficient rights to execute it. Contact your network administrator for further advice.



A dynamic link library used by a program requires a separate data segment for each task. Some programs, when started more than once, share one data segment for all instances. Contact the vendor of the program for further advice.



The memory demanded by an application is larger than the available memory. Close running applications and check your virtual memory settings, then retry to start the application.



The application you tried to start was designed for another version of Microsoft Windows. Contact the vendor of that software to get a copy for your Windows version.



The file specified in a button's properties is neither recognized as a Windows or DOS application. Try to re-install the software and contact the vendor of that software if the problem persists.



You tried to start an application that was not designed for Microsoft Windows nor for DOS. Contact the vendor of the software for further advice.



The application you tried to start can only run in real mode. This mode is not available if you are using Microsoft Windows 3.1 or higher. Contact the vendor of the software if a version for Windows enhanced mode is available.



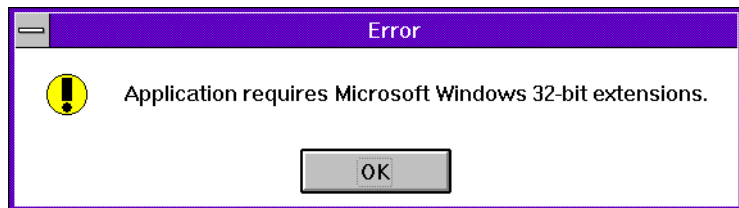
If this error occurs the application is already running and cannot be launched a second time. Check the "Switch to existing instance" box in the associated button's properties to avoid such attempts.



Refer to the users manual of the software causing this problem about how to uncompress its executable files.



A dynamic link library required by the application appears to be corrupted. Restart Windows and try again. If the problem persist, re-install your software.



This error occurs if an application requires the 32-bit extension to be installed in your system. Consult the software's user manual if this extension is shipped with it and how to install it.



An error occurred during the execution of a program and Microsoft Windows was not able to determine the nature of the error. Restart Windows and try again.