



Software Grove Messages for Networks

Help Contents

This index contains a list of all Help topics available for **Software Grove Messages™**.

To return to this index from any topic, press the Contents  button.

To learn how to use Help, press **F1**  or choose **How to Use Help** from the Help menu.

Introduction:

What is "Software Grove Messages"?

Copyright

Keyboard:

Accelerator Keys

Menu Commands:

Menubars

Message Log

Message Pad

Options Menu

File Menu

Edit Menu

Help Menu

Exit MESSAGES

Procedures:

Take a message

Review an old message

View the message log

Use a Cardfile database

Message-Pad Fields:

[For \(To\)](#)
[Date and Time](#)
[From \(M\), Of, and Phone](#)
[Flags and Icons](#)
[Message](#)

Preferences

[messages.ini Entries](#)
[Modifying messages.ini](#)

Glossary

[Defined Terms](#)

What is "Software Grove Messages"?

Welcome to **Software Grove Messages™** (also referred to as **Messages™**).

Messages is an electronic telephone-message-pad program oriented toward enabling you to answer the phone and take messages without turning your attention away from the computer screen or searching for the message book and pen.


Messages uses the universally known format of the telephone message pad. A major advantage to **Messages** is that instead of turning away from your current task, and losing your concentration, you will be able to maintain screen contact **and** take those important phone messages simultaneously.

Messages uses Microsoft Windows standards whenever possible. Any exceptions are noted within this help document.

Messages can be displayed (and used) as an **icon**, a **message pad**, or as a **logfile** window. Multiple "industry standard" message pad formats are provided, allowing you to choose the form most similar to the paper form you are now using.



Software Grove Messages for Networks

| | | | | | | |
|-----------------|-------------------------------------|-----------|--------------------------|------------------------------|--------------------------|---|
| TO | Ralph Kramden | DATE | Thu Apr 8 1993 | TIME | 2:38 PM |  |
| FROM | Joe Norton | PHONE | 1-800-555-1212 | <input type="checkbox"/> Add | | |
| DE | City Water And Sewer | | | | | |
| MESSAGE | Hey, Ralphie - bowling tonight? | | | | | |
| | | | | | | <input type="button" value="Print"/> |
| | | | | | | <input type="button" value="Save"/> |
| | | | | | | <input type="button" value="Exit"/> |
| PHONED | <input checked="" type="checkbox"/> | CALL BACK | <input type="checkbox"/> | RETURNED CALL | <input type="checkbox"/> | WANTS TO SEE YOU |
| | | | | | | <input checked="" type="checkbox"/> |
| WILL CALL AGAIN | <input type="checkbox"/> | WAS IN | <input type="checkbox"/> | David | | |

Software Grove Messages for Networks

IMPORTANT MESSAGE

For Joe Norton

Date Thu Apr 8 1993 Time 2:26 PM

MESSAGES

M Ralph Kramden ☐ Add

Of Metro Bus Lines

Phone No. 1-800-555-1212


☐ Telephoned
 ☐ Please call

☒ Returned your call
 ☐ Will call again

☐ Wants to see you
 ☐ Was in to see you

Message By David

Indubitably - bowling tonight -
and away we go!!!

 ☐

Print

Save

Exit

Software Grove Messages

File Edit Options Window Help

InBox for Ralph Kramden : 211 message[s]

| | | | |
|--------------|-------------------|------------------|--------|
| 113: [10-31] | TO: Ralph Kramden | FROM: Joe Norton | MSG: ↑ |
| 114: [10-31] | TO: Ralph Kramden | FROM: Joe Norton | MSG: ↓ |
| 115: [10-31] | TO: Ralph Kramden | FROM: Your Wife | MSG: ↓ |

Message 113 : InBox for Ralph Kramden

Sat Oct 31 10:42:51 1992

TO : Ralph Kramden

FROM : Joe Norton

OF : City Water

PHONE : (800) 555-1212

MSG : Hey, Ralph

Message 114 : InBox for Ralph Kramden

Sat Oct 31 10:43:51 1992

TO : Ralph Kramden

FROM : Joe Norton

OF : City Water

PHONE : (800) 555-1212

MSG : Hey, Ralph

Message 115 : InBox for Ralph Kramden

Sat Oct 31 10:44:46 1992

TO : Ralph Kramden

FROM : Your Wife

OF : City Water

PHONE : unknown

MSG : Go bowling "over my dead body"!

Daily log for
Jun-12-92:
20


Messages Features Include:

- phone message pad is always close and handy.
- faster than hand-writing a message.
- messages are printed; no problems reading handwriting.
- all messages are stored in the computer and can be found and retrieved quickly.
- "smart" message pad fields:
 - date and time are automatically filled in.
 - phone numbers are automatically formatted.
 - list of message recipients can be used for quick selection to **For (To)** field.
 - name in **From (M)** field can automatically be added to client datafile.
 - can automatically fill in the **Of** and **Phone** fields from the client datafile.
 - names in **For (To)** and **From (M)** fields can be anticipated as you type..
- multiple printing templates allows you to choose a print form that best suits your needs.
- **many** user-settable options.


Menubars

The main menubar is somewhat different as seen from the Messages icon, Message Pad and Message Log, but each contains essentially the same drop-down submenus.

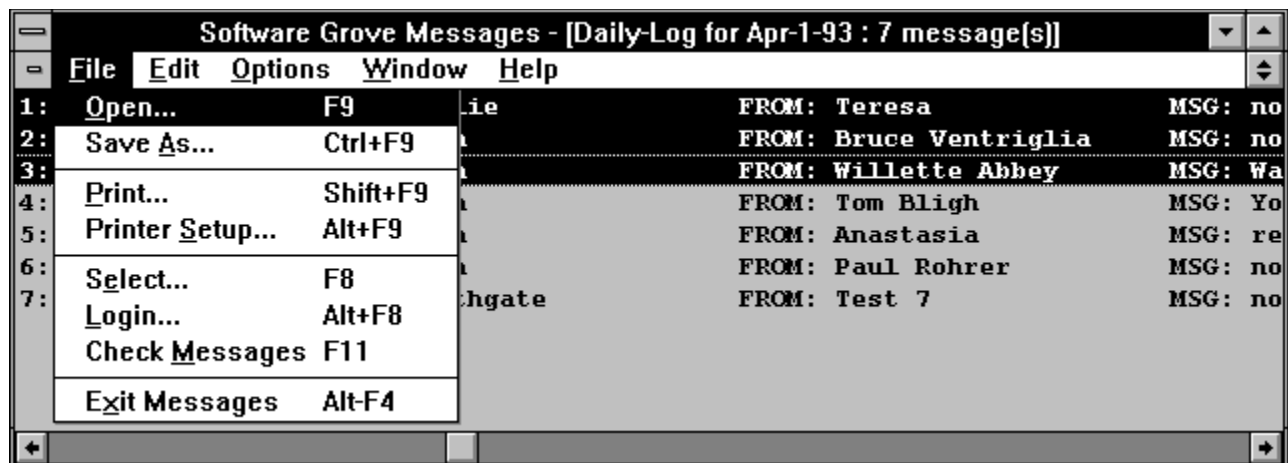
From the Messages icon, the menu is available from the Control menu as cascading submenus:

| | | | |
|---|-----------------|---------------------------------------|-----------------------|
| | | Message Log... | F6 |
| | | Message Pad... | F5 |
| Restore | | Log<u>i</u>n... | Alt+F8 |
| M<u>o</u>ve | | C<u>h</u>eck M<u>e</u>ssages | F11 |
| C<u>l</u>ose | Alt+F4 | S<u>e</u>t O<u>p</u>tions... | F7 |
| S<u>w</u>itch To... | Ctrl+Esc | F<u>i</u>le | O<u>p</u>en... |
| R<u>u</u>n... | | H<u>e</u>lp | F9 |
| M<u>e</u>ssages M<u>e</u>nu<u>s</u> | ▶ | S<u>a</u>ve A<u>s</u>... | Ctrl+F9 |
|  | | P<u>r</u>int... | Shift+F9 |
| | | P<u>r</u>inter S<u>e</u>tup... | Alt+F9 |

Similarly, the Message Pad menu cascades from the Control menu:

| | |
|---|----------------------------|
|  | Software Grove Mess |
| M<u>o</u>ve | |
| M<u>i</u>nimize | |
| C<u>l</u>ose | Alt+F4 |
| S<u>w</u>itch To... | Ctrl+Esc |
| M<u>e</u>ssage L<u>o</u>g... | F6 |
| L<u>o</u>gin... | Alt+F8 |
| S<u>h</u>ow Notes | F10 |
| F<u>i</u>le | ▶ |
| E<u>d</u>it | ▶ |
| O<u>p</u>tions | ▶ |
| H<u>e</u>lp | ▶ |

The Message Log menu is a standard menubar:



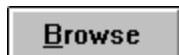
Run Command



Starts an application or opens a document.
The Run dialog box has the following options:

Command Line

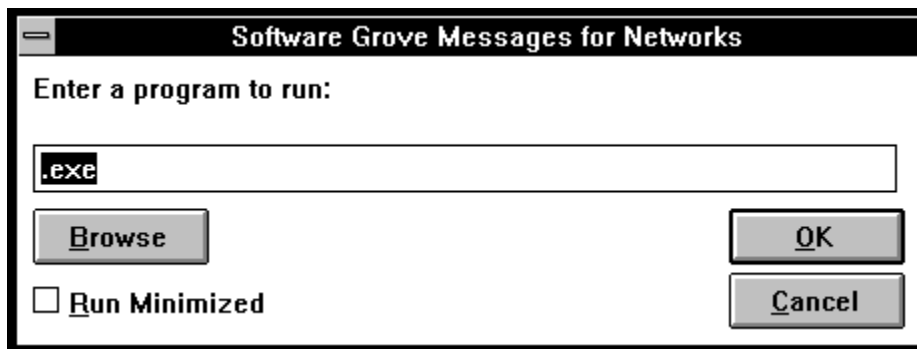
Type the application filename, including the path, if necessary.
If you want to open a document, type the application filename following by a space and the name of the document.



If you don't know the name or location of the application or document file, use the Browse button to open the Browse dialog box.

Run Minimized

Select this checkbox if you want the application to be reduced to an icon as it starts.

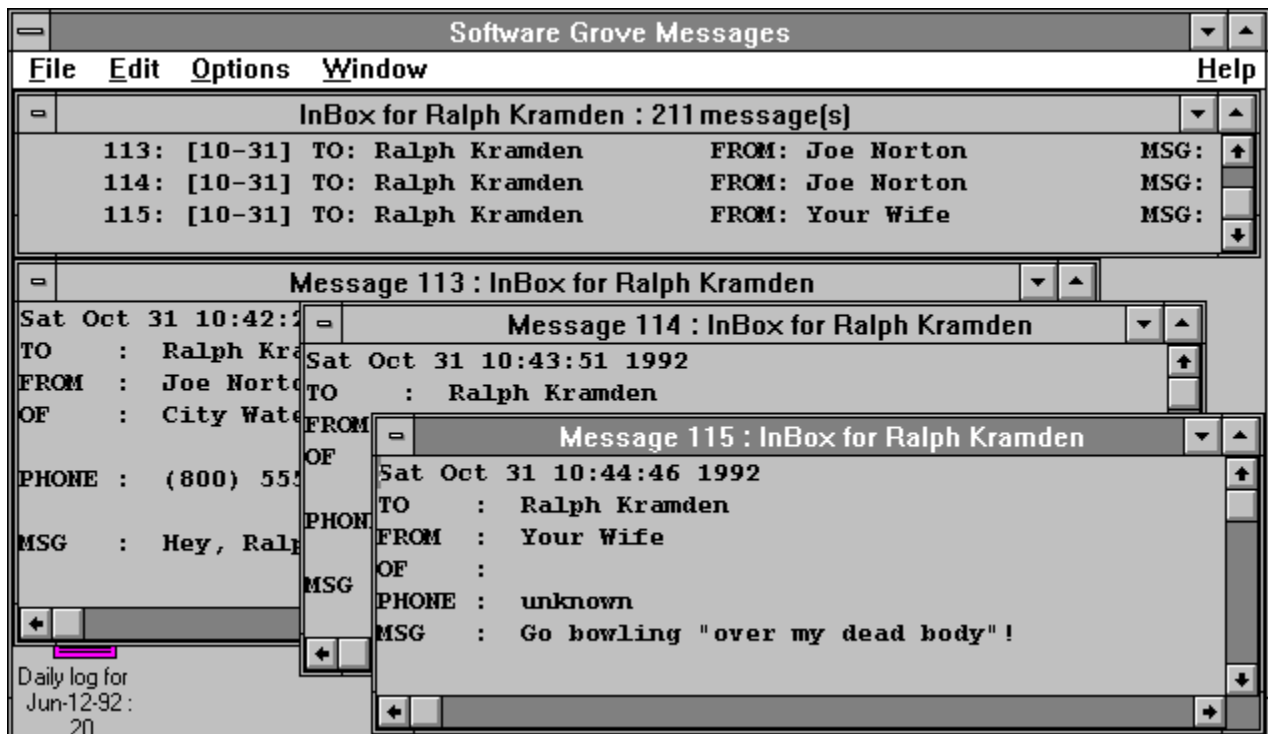


Message Log Command



Use this command to view the currently open logfile(s).

The main log window consists of a title frame and a menubar. Within the log frame, multiple windows may contain daily logfiles and selected messages. Each log or message window may be opened, closed, moved, sized, or mimimized (iconized) using standard Windows menu/key commands.



The Edit menu Cut and Copy commands can be used to cut/copy the selected message(s) to the Clipboard for pasting into other applications.

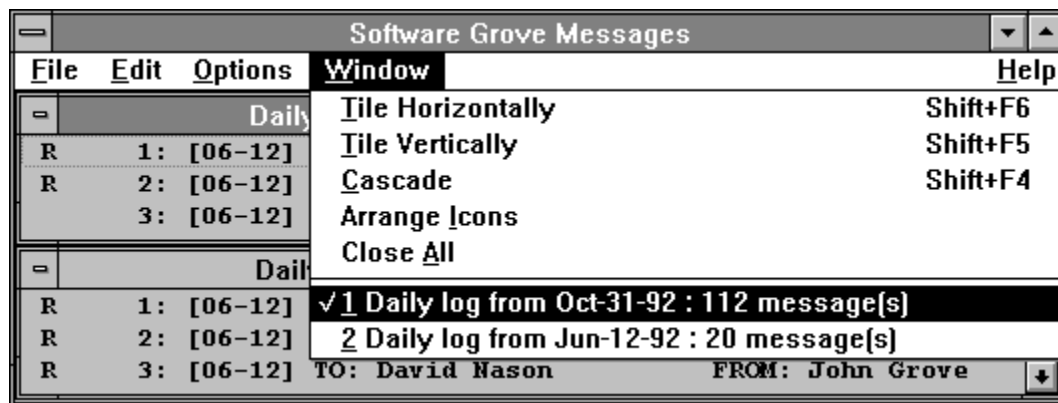
The Edit menu Clear command can be used to delete the selected message(s) from the logfile.

The File menu Print command can be used to print the selected message(s). If no messages are selected, the entire message log will be printed.

The File menu Open command can be used to open a different message logfile.

The Edit menu Flag n commands can be used to attach a user-defined flag to the selected message(s).

The Windows menu commands can be used to organize and stack the subwindows, or to change the currently active subwindow.



Message Pad Command


| |
|-------------------|
| Message Log... F6 |
| Message Pad... F5 |

Use this command to create a new message.

The current version of **Messages** supports the two message pad formats displayed below. Use the option, **PAD_Form**, to specify your preference.

Choose from the following list for help on specific areas of the message pad:

[Review an old message](#)
[Print current message](#)
[Save current message to Folder](#)
[Increment/decrement For \(To\) field](#)
[Increment/decrement Date and Time fields](#)
[Add / Modify current Caller fields to cardfile](#)
[For \(To\) Field](#)
[Date and Time Field](#)
[From \(M\), Of, and Phone Fields](#)
[Flag Fields](#)
[Message Field](#)
[Note Field](#)
[Scrolling in fields](#)

| Software Grove Messages for Networks | | | | | | | | | | | | | |
|--------------------------------------|---------|-------------------------------------|-----------|--------------------------|------------------------------|--------------------------|---|-------------------------------------|-----------------|--------------------------|--------|--------------------------|-------|
| M E S S A G E S | TO | Ralph Kramden | DATE | Thu Apr 8 1993 | TIME | 2:38 PM |  | | | | | | |
| | FROM | Joe Norton | PHONE | 1-800-555-1212 | <input type="checkbox"/> Add | | | | | | | | |
| | OF | City Water And Sewer | | | | | | | | | | | |
| | MESSAGE | Hey, Ralphie - bowling tonight? | | | | | <div>↑ ↓</div> <div>Print Save Exit</div> | | | | | | |
| | | | | | | | | | | | | | |
| PHONED | | <input checked="" type="checkbox"/> | CALL BACK | <input type="checkbox"/> | RETURNED CALL | <input type="checkbox"/> | WANTS TO SEE YOU | <input checked="" type="checkbox"/> | WILL CALL AGAIN | <input type="checkbox"/> | WAS IN | <input type="checkbox"/> | David |

Software Grove Messages for Networks

IMPORTANT MESSAGE

For Joe Norton

Date Thu Apr 8 1993 Time 2:26 PM

MESSAGES

M Ralph Kramden ☐ Add


Of Metro Bus Lines

Phone No. 1-800-555-1212

| | |
|--|--|
| <input type="checkbox"/> Telephoned | <input type="checkbox"/> Please call |
| <input checked="" type="checkbox"/> Returned your call | <input type="checkbox"/> Will call again |
| <input type="checkbox"/> Wants to see you | <input type="checkbox"/> Was in to see you |

Message By David

Indubitably - bowling tonight -
and away we go!!!

 ☐

Print

Save

Exit

Options Menu

The Options menu includes commands that enable you to modify **Messages'** default settings.

For more information, select the Options menu command name:

Set Options

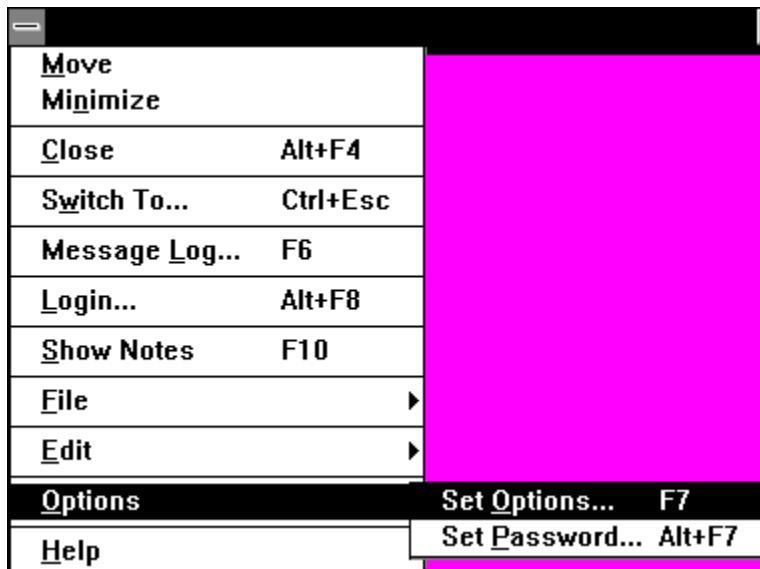
Modify or reset default settings.

Set Font

Change the current log window font (log window only).

Set Password

Change your login password.

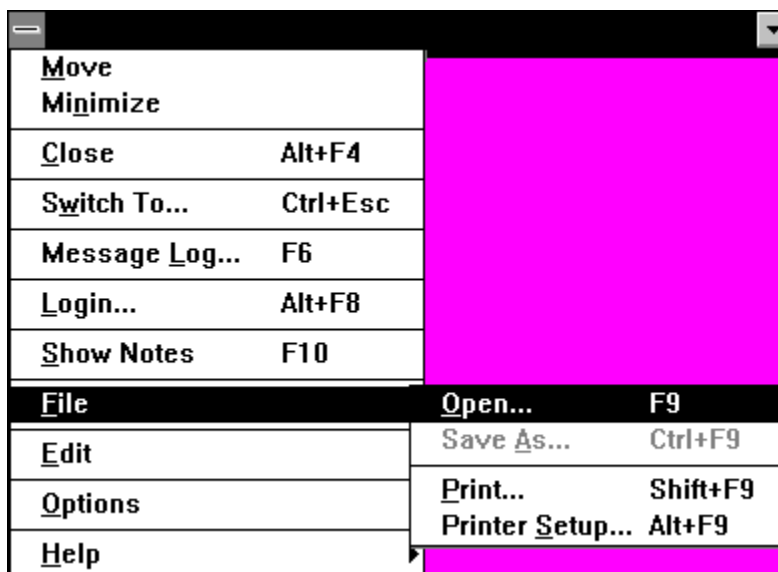


File Menu

The File menu includes commands that enable you to open and save files, select messages, and to print.

For more information, select the File menu command name:

| | |
|-------------------------------|---|
| <u>O</u> pen | Open the specified <u>logfile(s)</u> . |
| <u>S</u> ave <u>A</u> s | Save an open logfile. |
| <u>P</u> rint | Print selected message(s). |
| <u>P</u> rinter <u>S</u> etup | Specify the printer and printer options to use. |



Edit Menu

The Edit menu includes commands that enable you to move text to and from the Clipboard, to delete text, and to undo a previous editing operation.

For more information, select the Edit menu command name:

| | |
|---------------|---|
| <u>C</u> lear | Deletes text without moving it to the clipboard. |
| <u>C</u> opy | Copies text to the clipboard. |
| <u>C</u> ut | Deletes text and moves it to the clipboard. |
| <u>P</u> aste | Moves text from the clipboard to the edit window. |
| <u>U</u> ndo | Cancels a previous operation. |




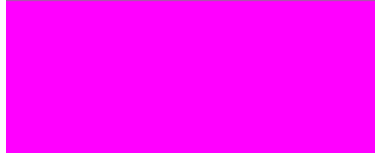
| | | |
|--------------------------------|--------------------------------|------------------------|
| M ove | | |
| M inimize | | |
| C lose | | |
| S witch To... | | |
| M essage L og... | | |
| L ogin... | | |
| S how N otes | | |
| F ile | | |
| E dit | U ndo | C trl+ Z |
| O ptions | C ut | C trl+ X |
| H elp | C opy | C trl+ C |
| | P aste | C trl+ V |
| | C lear | D el |
| | F lag M essage 1 | |
| | F lag M essage 2 | |
| | F lag M essage 3 | |

Help Menu

The Help menu includes commands to get Help while running **Messages**.

For more information, select the Help menu command name:

Contents
Search for Help On
Keyboard Help
How to Use Help
About Messages

| | | |
|---|--|---|
|  |  | |
| M ove | | |
| M inimize | | |
| C lose A lt+F4 | | |
| S witch To... C trl+Esc | | |
| M essage L og... F 6 | | |
| F ile ▶ | | |
| E dit ▶ |  | |
| O ptions ▶ | | |
| H elp | | |
|  | | C ontents F 1 |
| | | K eyboard C trl+ S hift+F1 |
| | | S earch for Help On... S hift+F1 |
| | | H ow to Use Help C trl+F1 |
| | | A bout Software Grove Messages... A lt+F1 |

Exit Messages

Exit Messages

Use this command to exit from **Messages**. This command may be called by pressing Alt-F4 (note: if the **CLOSE_EXITS_PROGRAM** option is *no*, this key only exits from the icon. Alt+F4 from the PAD or LOG would return to the icon).

Glossary

cardfile

clipboard

enter

field

flag

logfile

template

click

double-click

right-click

select

messages.ini Entries

The listing below describes the **Messages** default values.

Messages GENERAL OPTIONS

USERNAME and **MESSAGES_PASSWD** are required entries. Removal or modification of these entries could cause MESSAGES to fail to run.

ICON_ALWAYS_ON_TOP, **PAD_ALWAYS_ON_TOP**, **LOG_ALWAYS_ON_TOP** determine whether the icon, message-pad and/or message-log (respectively) will always remain visible, even when another application is running (defaults:NO to window/pad, YES to ICON).

ICON_Always_On_Top=YES
PAD_Always_On_Top=NO
LOG_Always_On_Top=NO

ALWAYS_RETURN_TO_APP determines whether the message-pad will return automatically to the last active application from which you jumped into MESSAGES (default:YES).

Always_Return_To_App=YES

STARTUP_AS determines whether MESSAGES will startup as the message **LOG**, the message **PAD** or as an **ICON** (default: ICON)

Startup_As=ICON

EXIT_ON_SAVE determines whether the SAVE button on the message-pad will also cause the message-pad to exit (default:YES).

Exit_On_Save=YES

EXIT_ON_PRINT determines whether the PRINT button on the message-pad will also cause the message-pad to exit (will save first if SAVE_ON_PRINT is YES) - (default:NO).

Exit_On_Print=NO

SAVE_ON_PRINT determines whether the PRINT button will also automatically SAVE the message (default:YES).

Save_On_Print=YES

CLOSE_EXITS_PROGRAM determines whether the CLOSE menu item (and ALT-F4 hotkey) will exit from MESSAGES when executed from the message-pad and the message-log, or simply return to the icon (default:YES). Close will always exit when executed from the icon.

Close_Exits_Program=YES

DELETE_ON_READ determines whether READING a message will automatically flag it as DELETED (default:NO).

Delete_On_Read=NO

CARDFILE to use in preloading "FROM (M)" fields after from-name is entered (default:CALLERS.CRD).

Caller_CardFile=CALLERS.CRD

MESSAGES can **add** or **modify** the cardfile "FROM" fields (if a cardfile is specified above) (options: ALWAYS, NEVER, CHECKON, CHECKOFF) (default:CHECKON).

Modify_Cardfile=CHECKON

AREACODE specifies the default areacode to be used in the "PHONE" field (default:initialized by setup).

Default_AreaCode=000

CARDFILE containing the names to be pre-defined for the "FOR (TO)" field on the message-pad (default:INBOXES.CRD).

InBox_CardFile=INBOXES.CRD

If this option is turned on the "Set Options..." dialog box will include a **button** that can be used to start NotePad (or other text **editor**). (default:NO).

Options_Editor_Button=YES

Options_Editor=notepad.exe

MESSAGES DISPLAY OPTIONS

WINDOW DEFAULT POSITIONS...

LOG_x defines where the main window will be placed initially...

_STYLE can be one of: 1=normal, 2=minimized, 3=maximized,

if _style is "normal" **_x**, **_y**, **_w**, and **_h** can be used to specify the default x & y, width & height.

LOG_X=0

LOG_Y=0

LOG_W=1000

LOG_H=1000

LOG_Style=3

PAD_X and **PAD_Y** specify a screen location for the Message-Pad. If these options are not used or are less than 1, the pad is placed by Windows.

PAD_X=
PAD_Y=

ICON_X and **ICON_Y** specify a screen location for the icon. If these options are not used or are less than 0, the icon is placed by Windows (default: placed by Windows).

ICON_X=
ICON_Y=

LOG_BKGND and **PAD_BKGND**, **LOG_FRGND** and **PAD_FRGND** define the background and foreground colors, for the LogFile windows and Message-Pad, respectively, and can be: (case ignored)
BLACK, RED, BLUE, GREEN, YELLOW, MAGENTA, CYAN, WHITE, DKRED, DKGREEN, DKBLUE, TAN, PURPLE, AQUA, GRAY, LTGRAY,
or a hexadecimal RGB value (two hex chars each for Blue, Green, and Red).

LOG_Bkgnd=ltgray
LOG_Frgnd=black

PAD_Frgnd=black
PAD_Bkgnd=magenta

PAD_FONTFACE and **LOG_FONTFACE** (and **_FONTSIZE**) define the font to use in the message pad/log windows (defaults are the system defaults).

LOG_FontFace=
LOG_FontSize=

PAD_FontFace=
PAD_FontSize=12

PAD_FORM - defines the message-pad form to use
(choices currently include **PINK_PAD** (square) and **BLUE_PAD** (horizontal rectangle))
(default: PINK_PAD)

PAD_Form=PINK_PAD

INIT_TO_NAME determines whether the first person in the INBOXES cardfile (if a cardfile is specified above) is automatically inserted in the "For (To)" field when the form appears (options: NONE or n where n is the nth card in the cardfile) (default: 1).

Init_To_Name=1

MULTILINE_TO_FIELD determines whether or not the "TO" field uses carriage-returns (enter-key) to enter additional names or to move to the next field (default: NO (move)).

MultiLine_To_Field=NO

AUTOFILL determines whether or not to fill the "OF" and "PHONE" fields for a given "FROM", using the cardfile specified above (default: YES).

AutoFill=YES

MULTILINE_CALLER_FIELDS determines whether the "OF" and "PHONE" fields for a given "FROM" use carriage-returns (enter-key) to enter additional lines (default: NO (move)).

MultiLine_Caller_Fields=NO

COMPLETE_TO_NAME and **COMPLETE_FROM_NAME** determine whether or not to attempt to anticipate the names being typed in the "TO" and "FROM" fields (defaults: NO).

Complete_To_Name=NO

Complete_From_Name=NO

CAPITALIZE_NAMES determines whether or not to automatically capitalize the first character in each word in the "TO" and "FROM" fields (default: NO).

Capitalize_Names=NO

MULTIPLE_ICON_FLAGS determines whether or not multiple icons may be selected for a given message. If YES, the selection must be made (or unmade) using the <Space> key, otherwise just normal selecting (default: NO).

Multiple_Icon_Flags=NO

These options can be used to change the format used in **date and time** strings on the message-pad (as opposed to **Date_MDY** and **Time_12hr**) (defaults: NO).

Date_DMY_Format=NO

Time_24hr_Format=NO

These options can be used to automatically pre-select the specified **checkboxes** on the message-pad (defaults: NO).

Phoned_Default_On=NO

Called-To-See-You_Default_On=NO

Wants-To-See-You_Default_On=NO

Please-Call-Back_Default_On=NO

Will-Call-Again_Default_On=NO

Returned-Call_Default_On=NO

SHOW_EXCERPTS determines whether the first several words of the message should be displayed in the log message-list and in the message-select box (default: NO).

Show_Excerpts=YES

SHOW_FLAGS determines whether the icon-flags of the message should be displayed in the log message-list and in the message-select box (default:NO).

Show_Flags=YES

SHOW_TIME determines whether the time of the message should be displayed in the log message-list and in the message-select box (default:NO).

Show_Time=YES

MESSAGES PRINTER OPTIONS

LOG_PRINT_TEMPLATE and **PAD_PRINT_TEMPLATE** are used to define the default printing formats. (NONE=PROMPT USER)
(defaults:message-pad=trackltr.frm, other=4up-ltr.frm).

LOG_Print_Template=4up-ltr.frm

PAD_Print_Template=trackltr.frm

PRINT_FONTFACE (and **_FONTSIZE**) defines the font to use in printing messages.

PRINT_FONTSIZE is only used when printing an entire logfile, otherwise the best-fit fontsize will be used. (defaults: fontface=ARIAL, fontsize=12)

Print_FontFace=ARIAL

Print_FontSize=12

PRINTERDEVICE is used to define the default printer. Must be of the format

DEVICENAME,DRIVER,PORT: and must be found in win.ini (see Control Panel) (NONE=system default) (default:NONE)

PrinterDevice=NONE

LOG_TEMPLATE_PROMPT and **PAD_TEMPLATE_PROMPT** define whether to force the use of the default templates defined above or to prompt at printing time (options:ALWAYS,NEVER,FIRST) (defaults:NEVER to PAD_TEMPLATE_PROMPT,ALWAYS to LOG_TEMPLATE_PROMPT).

LOG_Template_Prompt=ALWAYS

PAD_Template_Prompt=NEVER


DEVICE_PROMPT defines whether to force the use of the default printerdevice defined above or to prompt at printing time (options:ALWAYS,FIRST) (default:FIRST).

Device_Prompt=FIRST

Message Pad - Review Messages

Messages provides two methods to view the messages in the currently open logfile:

- use the Message Log menu command to view entire logfiles,
- scroll forward/backward through the messages, displaying one at a time on the message pad.

To scroll the message pad, mouse click on the pad scrollbar , left to scroll forward, right to scroll backward.

To view messages from other daily logfiles, use the File menu Open command.


By default, "historic" messages will not automatically be saved when the message-pad **Print** button (if the `SAVE_ON_PRINT` option is *on*) is pressed.

See also:

Message Log Command



Message Pad - FOR (TO) Field

The option, **InBox_CardFile**, can be used to supply names that may be entered in the **For (To)** field. If a cardfile is supplied, the dropdown button  (or the up-arrow and down-arrow keys) can be used to view and scroll up and down through the list, each name being automatically entered into the field. More information on this field is available in the [Message Pad - Cardfile](#) topic.

If the option, **Init_To_Names**, is set, the first (or specified) name in the list will automatically be placed in the field.

See also:

[Message Log Command](#)
[messages.ini Entries](#)

Message Pad - DATE and TIME Fields

The **Date and Time** fields are automatically initialized to the system date and time. They may be changed manually by typing a new value into the appropriate field. If a legitimate date/time is entered, the field will be formatted when you leave it. Scrolling the date and time fields will increment/decrement the date/time (see below).

The default formats are

Sat Jan 2 1992 (Month-Date-Year format)


11:00 PM (12-hour format)

Optional formats are:

Sat 2 Jan 1992 (Date-Month-Year format)

23:00 PM (24-hour format)

You can specify the formats by using *Windows' Control Panel* (International Settings), or by setting the options, **Date_DMY_Format** and/or **Time_24HR_Format**.

The **Date** and **Time** fields have special scrolling features. Click on the field scrollbar  or use the following keys:

| | |
|--------------------|--|
| Up Arrow | increment date/time by one day/minute. |
| Down Arrow | decrement date/time by one day/minute. |
| Shift+Up Arrow | increment date/time by one month/hour. |
| Shift+Down Arrow | decrement date/time by one month/hour. |
| Control+Up Arrow | increment date/time by one week/hour. |
| Control+Down Arrow | decrement date/time by one week/hour. |

See also:

[Message Log Command](#)
[messages.ini Entries](#)

Message Pad - FROM (M), OF and PHONE Fields

Like the **For (To)** field, the **From (M)** field is special in that it may be used as the connection between **Messages** and a *Windows CardFile* database. More information on this field is available in the Message Pad - Cardfile topic.

The **Of**, and **Phone** fields are multiple-line fields which, like the **From** field, are capable of accepting up to 255 characters of text (see ENTER). The multiple-line fields will automatically format and word-wrap.

See also:

Message Log Command

Message Pad Scrolling

Message Pad - FLAG Fields

The **flag** fields vary in sequence and name on the different **Messages** message pad forms. But the flags are identical.

Messages flags include:

Telephoned
Please Call Back
Returned Your Call
Will Call Again
Wants To See You
Was In To See You

Each of these is turned **off** by default, although the following options may be used to automatically preset the checkboxes **on**:

Phoned_Default_On
Called-To-See-You_Default_On
Wants-To-See-You_Default_On
Please-Call-Back_Default_On
Will-Call-Again_Default_On
Returned-Call_Default_On

Messages includes a set of **icons** that function as flags, as well. These include:



no icon flags are set.



IMPORTANT flag.



RUSH flag.



URGENT flag.



SECOND CALL flag.



THIRD CALL flag.



CALLER IS ON HOLD flag.



PERSONAL flag.



FAX flag.



FYI flag.



PLEASE SEE OPERATOR flag.

See also:

[Message Log Command](#)

Message Pad - MESSAGE Field

Unlike any other field on the message pad, other than the **Notes** field, the **Message** field has virtually no size limit. It is a multiline field which will automatically format and word-wrap its text to fit in the display box. Use the **Enter** key to insert additional line breaks.

If the message consists of more lines than can display in the message field, the field will automatically scroll to keep the cursor visible. Use the cursor movement keys and text edit keys to modify the message.

See also:

[Message Log Command](#)

[Message Pad - Notes Field](#)

[Message Pad Scrolling](#)

Message Pad - NOTES Field

Like the **Message** field, the **Notes** field has virtually no size limit. It is a multiline field which will automatically format and word-wrap its text to fit in the display box. Use the **Enter** key to insert additional line breaks.

If the note consists of more lines than can display in the message field, the field will automatically scroll to keep the cursor visible. Use the cursor movement keys and text edit keys to modify the message.

If your computer and Windows are set up to support a **Pen** device, the **Notes** field can contain handwritten notes which may be saved in that form.

See also:


[Message Log Command](#)

[Message Pad - Message Field](#)

[Message Pad Scrolling](#)

Message Pad - Scrolling in fields

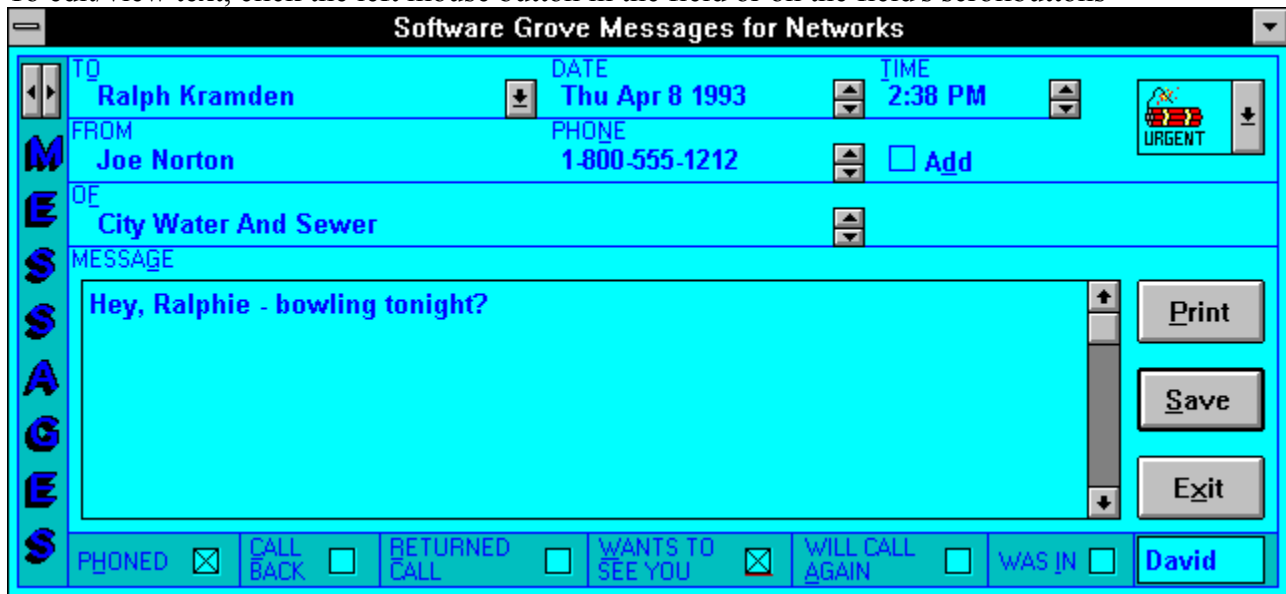
Scrolling and moving around the message pad can be accomplished with or without a mouse, to

move between fields, either click on the destination-field with the  left mouse button, or use the following keys:

| | |
|---------------|-------------------------|
| Tab, or ENTER | jump to next field. |
| Shift-Tab | jump to previous field. |
| Page Up | jump to previous field. |
| Page Down | jump to next field. |

See also ENTER


To edit/view text, click the left mouse button in the field or on the field's scrollbuttons



, or move within the field using the following keys:

| | |
|-------------|---|
| Up Arrow | scroll up one line within the field (see exceptions below). |
| Down Arrow | scroll down one line within the field (see exceptions below). |
| Left Arrow | scroll left within the field. |
| Right Arrow | scroll right within the field. |
| Backspace | delete the character before the cursor. |
| Del | delete the character after the cursor. |

Exceptions to the these scrolling rules are noted in the topics regarding the For (To) field and Date and Time fields.

Click anywhere in **Messages** with the right mouse button  to "popup" the main (Control) menu.

See also:

[Accelerator Keys](#)
[messages.ini Entries](#)

Message Pad - Printing



Click on the message-pad **Print** button to print the current message.

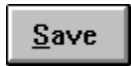
The printing template defined by the option, **PAD_Print_Template**, will be used to determine the default page layout. If no default layout is specified, **Messages** will prompt for a template file.

If the option, **Save_On_Print**, is *on*, the message will be saved before printing.

See also:

[File - Print Command](#)
[messages.ini Entries](#)

Message Pad - Save Message



Click on the message-pad **Save** button to save the current message in the open logfile. If the currently open logfile is not the default daily log, a warning message will be displayed to remind the user to first reopen the correct logfile.

If the option, **Save_On_Print**, is *on*, the message will be saved before printing.

See also:

[File - Open Command](#)

[File - Print Command](#)

[messages.ini Entries](#)

Message Pad - Card File

Messages can use files of the Windows cardfile format as a callers database for the **From (M)**, **Of**, and **Phone** fields, and as a inbox database for the **For (To)** field.

If the option, **Caller_CardFile** (or **InBox_Cardfile**), supplies a file of the proper format, the data will be scanned as a name is entered in the **From (M)** field (or **For (To)** field). If the option, **Complete_From_Name** (or **Complete_To_Name**) is *on*, the name will be predetermined, if possible. If the name is found, the corresponding field will be filled in, If the **From (M)** name is found, Of and Phone fields will also be filled in.

Adding a Card File Entry

If the name in the From (M) field is not found in the caller cardfile, one of four things will happen, depending upon the setting of the **Modify_CardFile** option:

| | |
|----------|--|
| Always | automatically add the From, Of and Phone fields to the cardfile when the Save button is clicked. |
| Never | no action, do not modify the cardfile. |
| CheckOn | place a checkbox, Add , preset to <i>on</i> , on the screen. If the checkbox is checked when the Save button is clicked, the From, Of and Phone fields will be added to the cardfile. |
| CheckOff | place a checkbox, Add , preset to <i>off</i> , on the screen. If the checkbox is checked when the Save button is clicked, the From, Of and Phone fields will be added to the cardfile. |

Modifying a Card File Entry

If the From field name is found in the cardfile, and the Of or Phone field is subsequently changed, one of three things will happen, depending upon the setting of the **Modify_CardFile** option:

| | |
|----------|---|
| Always | automatically update the Of and Phone fields in the cardfile when the Save button is clicked. |
| Never | no action, do not modify the cardfile. |
| CheckOn | place a checkbox, Modify , preset to <i>on</i> , on the screen. If the checkbox is checked when the Save button is clicked, the From, Of and Phone fields will be updated in the cardfile. |
| CheckOff | place a checkbox, Modify , preset to <i>off</i> , on the screen. If the checkbox is checked when the Save button is clicked, the From, Of and Phone fields will be updated in the cardfile. |

Notes:

Messages makes every attempt to prevent damage to or loss of your cardfiles. This is accomplished by writing only to a temporary cardfile (e.g., callers.tmp), and saving the

existing cardfile as a backup (e.g., callers.bak) before replacing it with the temporary. If any message indicating that reading, writing, or saving the cardfile failed, remember that any unsaved changes are likely still in the temporary and that your backup cardfile is still in the same directory. In the event of a problem or machine/system crash, these files can replace the cardfile using DOS copy or Windows File Manager.

A message stating that the cardfile is not recognizable can mean one of two things:
(1) the cardfile was modified by another application that inserted non-textual data into it, or
(2) the memory offsets that Messages uses to allow fast scanning of the cardfile no longer match the file itself. This latter case may also be the result of another application modifying the cardfile, and can usually be overcome by exiting Messages and restarting.

See also:

[messages.ini Entries](#)

Accelerator Keys

[Messages Accelerator Keys](#)

[Message-Pad Accelerator Keys](#)

[Message-Log Accelerator Keys](#)

The keyboard topics below come from *Help for Windows*. Any exceptions in **Messages** are noted. Choose from the following list to review the keys used in Windows:

[Cursor Movement Keys](#)

[Dialog Box Keys](#)

[Editing Keys](#)

[Menu Keys](#)

[System Keys](#)

[Text Selection Keys](#)

[Window Keys](#)

Messages Accelerator Keys

Messages keys are effective as long as the current active window is the Message Pad, the Message Log, or the Messages icon.

| Key(s) | Function |
|------------------|------------------------------------|
| Alt+Space | Drop down the main (Control) menu. |
| F1 | <u>Help index</u> |
| Alt+F1 | <u>About Messages</u> |
| Shift+F1 | <u>Search for Help On</u> |
| Control+F1 | <u>Help on help</u> |
| Control+Shift+F1 | <u>Keyboard Help</u> |
| Alt+F4 | <u>Exit Messages</u> |
| F5 | <u>Message-Pad</u> |
| F6 | <u>Message-Log</u> |
| F7 | <u>Start options editor</u> |
| Shift+F7 | <u>Choose window font</u> |
| F9 | <u>Open logfile</u> |
| Alt+F9 | <u>Printer setup</u> |
| Control+F9 | <u>Save logfile and/or message</u> |
| Shift+F9 | <u>Print</u> |
| Esc | Return to icon/log/pad |

Message Pad Accelerator Keys

Message Pad keys are effective as long as the active window is the Message Pad.

| <u>Key(s)</u> | <u>Function</u> |
|--------------------------|---|
| Enter | Same as Tab, move from <u>field</u> to field. |
| Up Arrow | <u>Scroll field up.</u> |
| Down Arrow | <u>Scroll field down.</u> |
| Del | <u>Clear edit field.</u> |
| Control+Z | <u>Undo last edit (or last undo).</u> |
| Shift+Del or Control+X | <u>Cut from edit field to clipboard.</u> |
| Control+Ins or Control+C | <u>Copy from edit field to clipboard.</u> |
| Shift+Ins or Control+V | <u>Paste to edit field from clipboard.</u> |
| Esc | Return to icon/log |
| Alt+O | Jump to For (To) field. |
| Alt+M | Jump to From (M) field. |
| Alt+F | Jump to Of field. |
| Alt+N | Jump to Phone No. field. |
| Alt+B | Jump to By field. |
| Alt+G | Jump to Message field. |
| Alt+E | Jump to Date field. |
| Alt+T | Jump to Time field. |
| Alt+P | <u>Print current message</u> |
| Alt+S | <u>Save current message</u> |
| Alt+D | <u>Add/Modify current From in cardfile</u> |
| Alt+H | Toggle Telephoned flag checkbox. |
| Alt+C | Toggle Please Call Back flag checkbox. |
| Alt+R | Toggle Returned Your Call flag checkbox. |
| Alt+A | Toggle Will Call Again flag checkbox. |
| Alt+W | Toggle Wants To See You flag checkbox. |
| Alt+I | Toggle Was In To See You flag checkbox. |
| F10 | Show/Hide Notes field. |
| Control-F | Popup <u>File Menu</u> |
| Control-E | Popup <u>Edit Menu</u> |
| Control-O | Popup <u>Options Menu</u> |
| Control-H | Popup <u>Help Menu</u> |

Message Log Accelerator Keys

Message Log keys are effective as long as the active window is the Message Log Viewer.

| <u>Key(s)</u> | <u>Function</u> |
|--------------------------|---|
| Enter | View selected message(s). |
| Del | <u>Delete selected message(s).</u> |
| Alt+Del | <u>Undelete selected message(s).</u> |
| Shift+Del or Control+X | <u>Cut selected message(s) to clipboard.</u> |
| Control+Ins or Control+C | <u>Copy selected message(s) to clipboard.</u> |

Cursor Movement Keys

| <u>Key(s)</u> | <u>Function</u> |
|----------------------------|--|
| Direction (arrow) key | Moves the cursor left, right, up, or down in a field (see exceptions in <u>Message Pad Keys</u>). |
| End or Control+Right Arrow | Moves to the end of a line. |
| Home or Control+Left Arrow | Moves to the beginning of a line. |
| PageUp or PageDown | Moves up or down in a field, one screen at a time(see exceptions in <u>Message Pad Keys</u>). |

Dialog Box Keys

| Key(s) | Function |
|----------------------|--|
| Tab | Moves from field to field (left to right and top to bottom). |
| Shift+Tab | Moves from field to field in reverse order. |
| Alt+letter | Moves to the option or group whose underlined letter matches the one you type. |
| Direction key | Moves from option to option within a group of options. |
| Escape | Closes a dialog box without completing the command. (Same as Cancel) |
| Alt+Down Arrow | Opens a drop-down list box. |
| Alt+Up or Down Arrow | Selects item in a drop-down list box. |
| Spacebar | Cancels a selection in a list box. Selects or clears a check box. |
| Control+Slash | Selects all the items in a list box. |
| Control+BackSlash | Cancels all selections except the current selection. |
| Shift+ Direction key | Extends selection in a text box. |
| Shift+ Home | Extends selection to first character in a text box. |
| Shift+ End | Extends selection to last character in a text box |

Editing Keys

| Key(s) | Function |
|---------------|---|
| Backspace | Deletes the character to the left of the cursor. Or, deletes selected text. |
| Delete | Deletes the character to the right of the cursor. Or, deletes selected text. |

Menu Keys

| Key(s) | Function |
|---------------------|---------------------------------|
| Alt+Spacebar | Pulls down the Control menu. |
| Left or Right Arrow | Moves among menus. |
| Up or Down Arrow | Moves among menu items. |
| Enter | Chooses the selected menu item. |

System Keys

The following keys can be used from any window, regardless of the application you are using.

| <u>Key(s)</u> | <u>Function</u> |
|----------------------|--|
| Control+Escape | Switches to the <i>Windows Task List</i> . |
| Alt+Escape | Switches to the next application window or minimized icon, including full-screen programs. |
| Alt+Tab | Switches to the next application window, restoring applications that are running as icons. |
| Alt+PrtSc | Copies the entire screen to <u>Clipboard</u> . |
| Ctrl+F4 | Closes the active window. |
| F1 | Gets Help and displays the Help Index for the application. |

Text Selection Keys

| Key(s) | Function |
|-----------------------------------|--|
| Shift+Left or Right Arrow | Selects text one character at a time to the left or right. |
| Shift+Down or Up Arrow | Selects one line of text up or down. |
| Shift+End | Selects text to the end of the line. |
| Shift+Home | Selects text to the beginning of the line. |
| Shift+Page Down | Selects text down one window. Or, cancels the selection if the next window is already selected. |
| Shift+Page Up | Selects text up one window. Or, cancels the selection if the previous window is already selected. |
| Control+Shift+Left or Right Arrow | Selects text to the next or previous word. |
| Control+Shift+Up or Down Arrow | Selects text to the beginning (Up) or end (Down) of the paragraph. |
| Control+Shift+End | Selects text to the end of the document. |
| Control+Shift+Home | Selects text to the beginning of the document. |

Window Keys

| Key(s) | Function |
|-----------------------|--|
| Alt+Spacebar | Opens the Control menu for an application window. |
| Alt+Hyphen | Opens the Control menu for a document window. |
| Alt+F4 | Closes a window. |
| Alt+Esc | Switches to the next application window or minimized icon, including full-screen programs. |
| Alt+Tab | Switches to the next application window, restoring applications that are running as icons. |
| Alt+Enter | Switches a non-Windows application between running in a window and running full screen. |
| Direction (arrow) key | Moves a window when you have chosen Move from the Control menu. Or, changes the size of a window when you have chosen Size from the Control menu. |

Options - Set Options Command

Use this command to execute the **Options Editor** to set / reset / modify **Messages'** default settings.

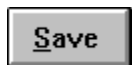
The Options Editor provides a graphical interface to the defaults and options stored in messages.ini. The options are subdivided into groups, each represented by an icon.



Click on an icon in the "Groups" field then click on the **Select** button to display the group's variable names and values in the "Current Values" field (double-clicking on an icon has the same effect).

Click on a line within the "Description" field to display a textual explanation of the selected variable in the "Current Values" field.

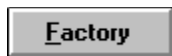
Enter a change in the "New Value" field, which may change in appearance depending upon the type of variable selected. The entry may consist of a menu selection or a value typed in.



Click on the **Ok** button to save the changes in the messages.ini file.



Click on the **Reset** button to reload the selected group from messages.ini. Reset will not change values once Save has been pressed.



To reset **ALL** the values in the messages.ini file to the factory presets, click on the **Factory** button, then on the **Save** button.



Click on the **Exit** button to leave the Options Editor.

See also:

[messages.ini Entries](#)

Software Grove Messages for Networks - Options Editor

Group:


General Options


Display Options


Network Options


Printing Options

Select

Help

Set Password...

Editor...

Current Values

Entry:

| | |
|--------------------|-----------------|
| Polling Interval | 100 |
| Network Path | T:\MESSAGES |
| Folder Path | c:\msgs\folders |
| Flag New Messages | NO |
| Flash New Messages | YES |

Description:

Number of seconds to wait before checking for new messages.

New Value

100

OK

Exit

Save

Factory

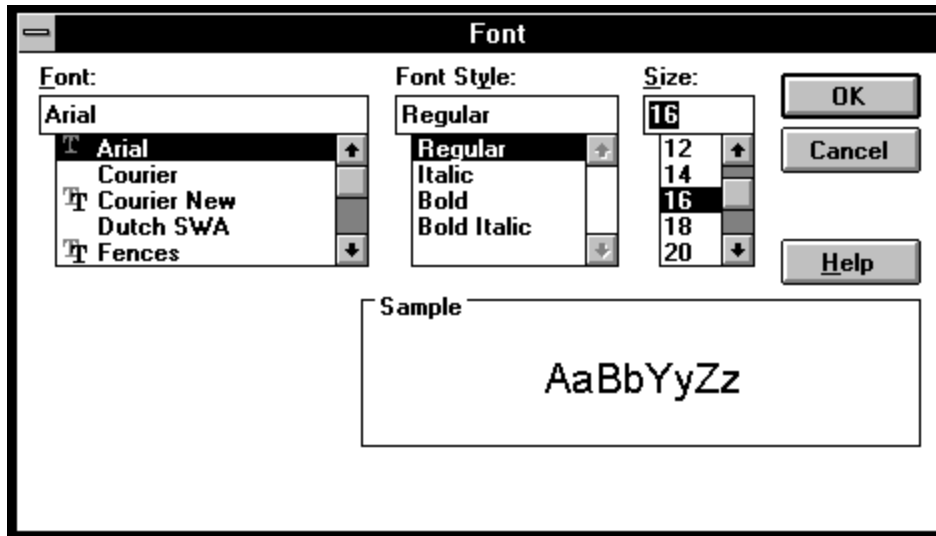
Reset

Options - Set Font Command

Use this command to change the font used in the current Message Log window.
This is a **temporary** change. Use the **Set Options...** command to make **permanent** changes.

See also:

[Option - Set Options Command](#)




Options - Set Password Command

Use this command to change the your login password.

See also:

[Option - Set Options Command](#)



A screenshot of a 'Set Password' dialog box. The title bar is black with the text 'Set Password' in white. The main area is white and contains the text 'New password for David:' followed by a single-line text input field. At the bottom, there are two buttons: 'OK' and 'Cancel'. The 'OK' button has the text 'OK' with a small 'u' under the 'O'. The 'Cancel' button has the text 'Cancel' with a small 'u' under the 'C'.

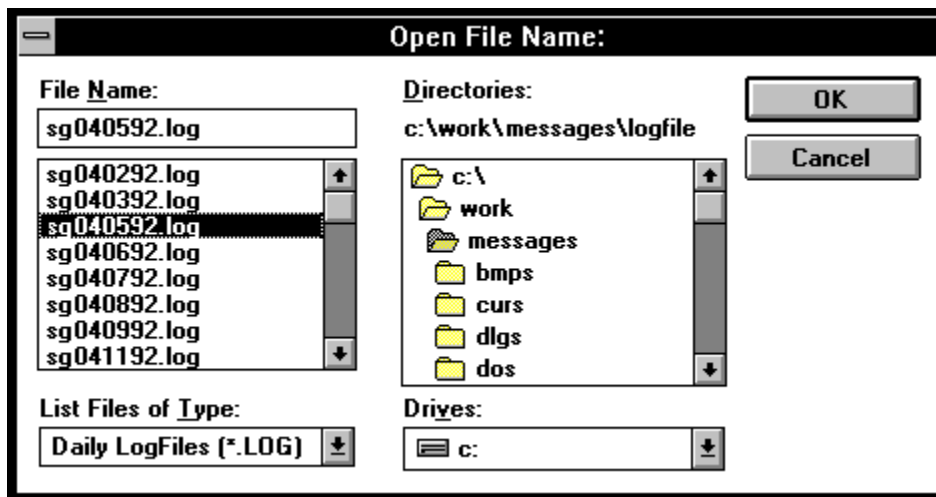
File - Open Command

Use this command to open existing logfile(s).

Using this command, multiple logfiles can be opened at one time. The messages in the open logfiles can be viewed or printed.

See also:

File - Print Command



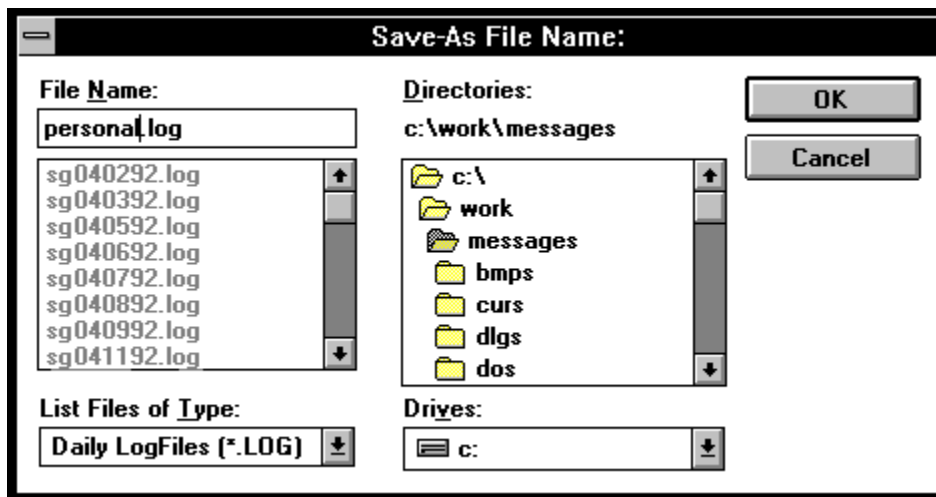
File - Save As Command

Use this command to save and name the currently open logfile.

The currently open logfile can be saved as either a formatted logfile with a new name, or as a plain-text file.

See also:

[File - Open Command](#)



File - Select Command

Use this command to select messages from currently open logfiles.

This command will temporarily open multiple logfiles simultaneously. The temporarily opened files will be closed upon exiting the dialog box.

Messages can be selected based upon any one of several **filters**:

| | |
|--------------|---|
| ALL: | all messages in the logfile(s). |
| TO: | messages taken for the specified name. |
| FROM: | messages from a specified source. |
| DATE: | messages taken on a specified date . |
| OF: | messages from a specified source company . |
| PHONE: | messages from a specified source phone number (or areacode). |
| FLAG: | messages with a specified <u>flag</u> (or icon). |
| BY: | messages taken by a specified operator . |
| UNPRINTED: | all unprinted messages. |
| UNREAD: | all unread messages. |
| User Flag 1: | messages with User-Flag-1 set. |
| User Flag 2: | messages with User-Flag-2 set. |
| User Flag 3: | messages with User-Flag-3 set. |

The selection filter can be used to include or exclude messages. For example, all messages for a specific person can be included, or all messages *except* those for the specific person. To exclude, select the **Exclude** checkbox.

The **Exact Match** checkbox can be used to force a character-by-character match between the specified filter string and the appropriate message field. The default will allow the specified filter string to be a subset of the message field.

See also:

[File - Open Command](#)

[File - Print Command](#)

Message Selection...

Message Filter

Select Filter:

ALL Messages

Include/Exclude Filter String:

☐ Match Entire Field

☐ Exclude Matches

Open Log(s)...

Open All Logs

Do Match

Continue

Cancel

Help...

Available Messages:

01: [04-08; 1:18 PM] TO: < John > FROM: < Ginger Brewer >

02: [04-08;12:06 PM] TO: < Northgate > FROM: < test14 > MSG:

03: [04-08;12:05 PM] TO: < Northgate > FROM: < test13 > MSG:

Select

Select All

Selected Messages:

UnSelect

UnSelect All

File - Print Command

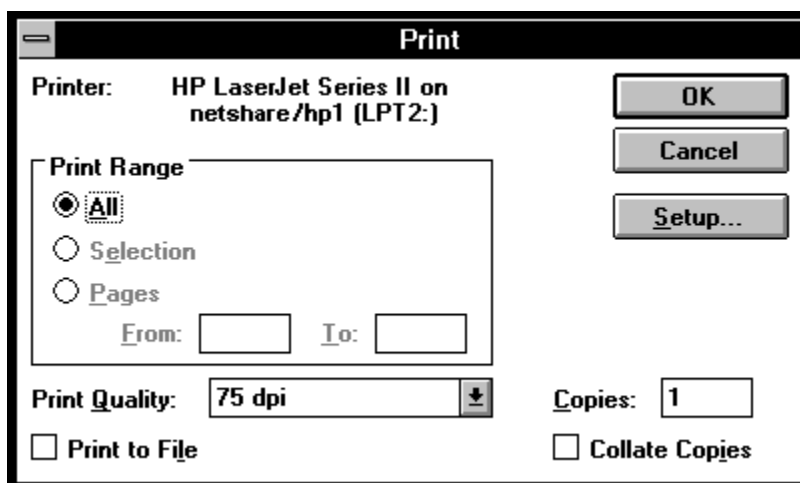
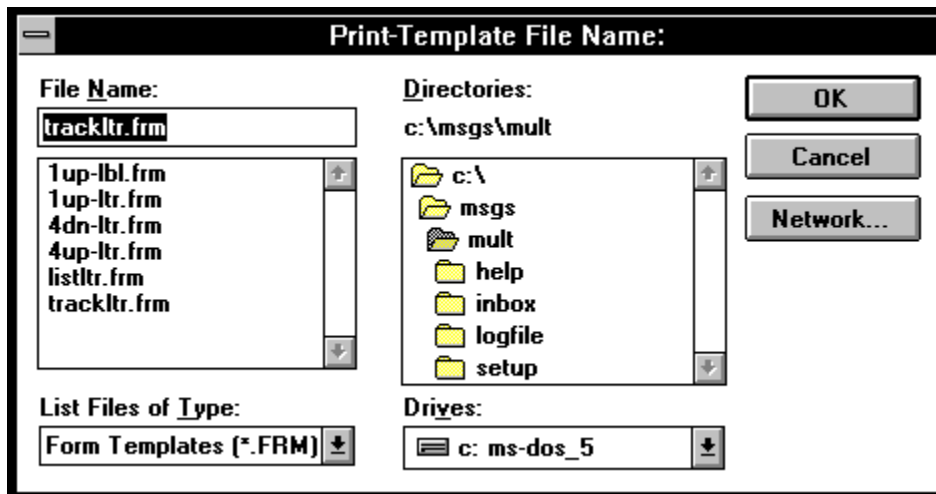
Use this command to control printing of messages.

The Print command will prompt for the printer to use. The messages.ini options Device_Prompt, LOG_Template_Prompt, and PAD_Template_Prompt control whether to prompt for the template and whether subsequent printing will use the same template and printer settings. To change the printer or print settings, use the **Printer Setup...** command.

- if messages have been selected from the log window, they will be printed,
- otherwise, the **Select...** command is run.

See also:

File - Printer Setup Command

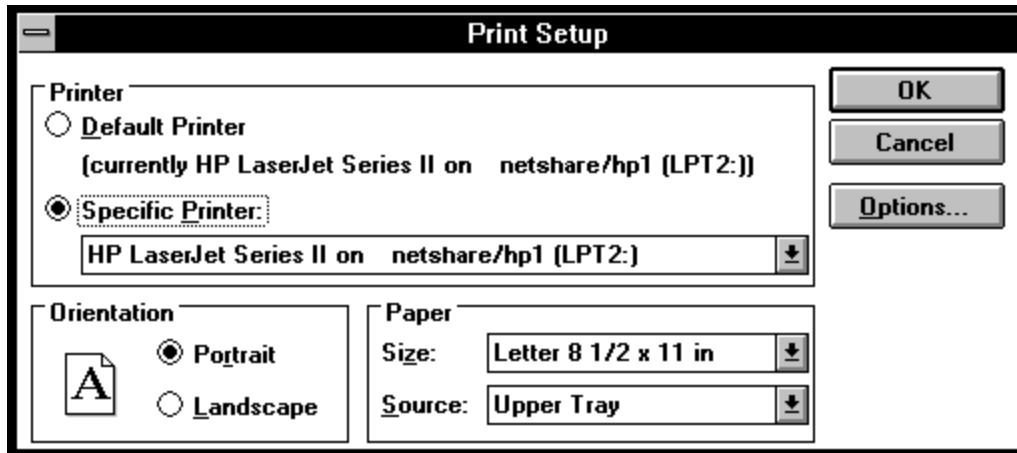


File - Printer Setup Command

Use this command to specify a printer and it's connections.

See also:

[File - Print Command](#)



Edit - Clear Command

Use this command to remove selected text from the message-pad, without copying it to the Clipboard.

This command is unavailable if you have no selected text.

Selected text is a selected field on the Message Pad.

Edit - Copy Command

Use this command to copy selected text onto the Clipboard.

This command is unavailable if you have no selected text.

Selected text can be either a selected field on the Message Pad or selected message(s) from the Message Log window.

Edit - Cut Command

Use this command to remove selected text from the message-pad and put it on the Clipboard.

This command is unavailable if you have no selected text.

Selected text is a selected field on the Message Pad.

Edit - Paste Command

Use this command to insert a copy of the Clipboard at the insertion point.

This command is unavailable if the Clipboard is empty.

Edit - Undo Command

Use this command to reverse the last editing action (or last undo command), if possible.

The Undo command is disabled on the menu if you cannot reverse your last action.

Log - Flag Command

Use this set of commands at a Message Log window to flag selected messages with one of the user-defined flags.

This command is unavailable if you have no selected messages.

Log - Delete Command

Use this command at a Message Log window to delete selected messages, without copying it to the Clipboard.

This command is unavailable if you have no selected messages.

Log - Copy Command

Use this command at a Message Log window to copy selected messages onto the Clipboard.

This command is unavailable if you have no selected messages.

Log - Cut Command

Use this command at a Message Log window to delete selected messages and copy them on the Clipboard.

This command is unavailable if you have no selected messages.

Help - Contents Command

Use this command to get help on using **Messages**. The entry point will be the Table of Contents.

Help - Search for Help On Command

Use this command to specify keywords on which to search for help.

Help - Keyboard Command

Use this command to get help on using the keyboard (with or without a mouse) to run **MESSAGES**.

Help - How to Use Help Command

Use this command to obtain help on using this help program.

Help - About MESSAGES Command


Use this command to see the **About Messages** dialog box:



Clipboard


A temporary storage area for cut or copied text. You can paste the contents of the Clipboard into any edit field or into a file of another application, such as Microsoft Word. The Clipboard holds the information until you cut or copy another piece of text.

Click

| Software Grove Messages for Networks | | | | | | | | |
|--|---------|------------------------------------|-------|--|------------------------------|--|---|--|
| MESSAGES | TO | Ralph Kramden | DATE | Thu Apr 8 1993 | TIME | 2:38 PM |  URGENT | |
| | FROM | Joe Norton | PHONE | 1-800-555-1212 | <input type="checkbox"/> Add | | | |
| | DE | City Water And Sewer | | | | | | |
| | MESSAGE | | | | | | | |
| Hey, Ralphie - bowling tonight? | | | | | | <input type="button" value="Print"/> | <input type="button" value="Save"/> | |
| | | | | | | <input type="button" value="Exit"/> | | |
| PHONED <input checked="" type="checkbox"/> | | CALL BACK <input type="checkbox"/> | | RETURNED CALL <input type="checkbox"/> | | WANTS TO SEE YOU <input checked="" type="checkbox"/> | | |
| | | | | WILL CALL AGAIN <input type="checkbox"/> | | WAS IN <input type="checkbox"/> | | |
| | | | | | | | David | |


Press and release the **left** mouse button.
If using a pen, press and release the pen button.

Double Click

| Software Grove Messages for Networks | | | | | | | | | | | | | |
|--------------------------------------|---------|-------------------------------------|-----------|--------------------------|------------------------------|--------------------------|---|-------------------------------------|--------------------------------------|-------------------------------------|-------------------------------------|--------------------------|-------|
| M E S S A G E S | TO | Ralph Kramden | DATE | Thu Apr 8 1993 | TIME | 2:38 PM |  | | | | | | |
| | FROM | Joe Norton | PHONE | 1-800-555-1212 | <input type="checkbox"/> Add | | | | | | | | |
| | DE | City Water And Sewer | | | | | | | | | | | |
| | MESSAGE | Hey, Ralphie - bowling tonight? | | | | | | | <input type="button" value="Print"/> | <input type="button" value="Save"/> | <input type="button" value="Exit"/> | | |
| PHONED | | <input checked="" type="checkbox"/> | CALL BACK | <input type="checkbox"/> | RETURNED CALL | <input type="checkbox"/> | WANTS TO SEE YOU | <input checked="" type="checkbox"/> | WILL CALL AGAIN | <input type="checkbox"/> | WAS IN | <input type="checkbox"/> | David |

Quickly press and release the **left** mouse button twice without moving the mouse.
If using a pen, press and release the pen button twice.

Right Click

| Software Grove Messages for Networks | | | | | | | | |
|--|---------|------------------------------------|-------|--|------------------------------|--|---|--|
| MESSAGES | TO | Ralph Kramden | DATE | Thu Apr 8 1993 | TIME | 2:38 PM |  URGENT | |
| | FROM | Joe Norton | PHONE | 1-800-555-1212 | <input type="checkbox"/> Add | | | |
| | DE | City Water And Sewer | | | | | | |
| | MESSAGE | | | | | | | |
| Hey, Ralphie - bowling tonight? | | | | | | <input type="button" value="Print"/> | <input type="button" value="Save"/> | |
| | | | | | | <input type="button" value="Exit"/> | | |
| PHONED <input checked="" type="checkbox"/> | | CALL BACK <input type="checkbox"/> | | RETURNED CALL <input type="checkbox"/> | | WANTS TO SEE YOU <input checked="" type="checkbox"/> | | |
| | | | | WILL CALL AGAIN <input type="checkbox"/> | | WAS IN <input type="checkbox"/> | | |
| | | | | | | | David | |

Press and release the **right** mouse button.

If using a pen, press and release the pen button while depressing the **Shift** key.

Select

Choose an item by clicking on it or by using the **Tab** key and the Up or Down Arrow keys to move the selection bar to it. The selected item displays in a different color or with a box surrounding it.

LogFile

The **Messages** "logfile" is a formatted file containing a specific day's or person's messages.

A logfile can also be a "folder" of messages stored together. Each message contains special character codes that facilitate searching through fields and printing.

Flag

A **Messages** "flag" is any of the checkboxes (e.g., **Telephoned**) or icons (e.g., **Urgent**) on the message pad. Each message may have a number of flags and one icon associated with it.

Template

A **Messages** "template" is a text file used to define a format in which messages will be printed. A number of these are provided with this release of Messages (e.g., 1up-form.frm, 4up-form.frm, tracker.frm).

Field



A **Messages** "field" is a text edit box. I

You'll notice that whenever you move the mouse pointer over a field, the cursor changes from the normal arrow to the "I-beam" and that when you click on a field (or move to a field using the Tab key), the blinking text-entry bar can be seen.

Using the mouse or the Tab key to move from field-to-field , you can "select" all or a part of the text in a field. The selected text is visibly highlighted, and can be replaced by hitting any key or selecting a Clipboard command from the Edit menu.

Software Grove Messages for Networks

TO Ralph Kramden DATE Thu Apr 8 1993 TIME 2:38 PM

FROM Joe Norton PHONE 1-800-555-1212 Add

OF City Water And Sewer

MESSAGE

Hey, Ralphie - bowling tonight?

Print

Save

Exit

PHONED ☒ CALL BACK ☐ RETURNED CALL ☐ WANTS TO SEE YOU ☒ WILL CALL AGAIN ☐ WAS IN ☐ David

Some fields on the message pad are multiple-line fields. These are generally identified by the presence of a scrollbar beside the field. The **Message** field is an exception in that it has a scrollbar rather than a scrollbar. Multiple-line fields automatically word-wrap long lines, inserting carriage-returns to allow the lines to fit within the display width of the field. User-input carriage-returns (see ENTER) may also be used to break lines.

Enter



If the option, **MULTILINE_CALLER_FIELDS**, is *on*, the **Of** and **Phone** fields will accept carriage-returns within the multiple line entries. Otherwise, Enter will jump to the next field.

Similarly, the **MULTILINE_TO_FIELD** option, if *on*, allows multiple lines to be inserted in the **For (To)** field.

Note: the **Of** and **Phone** fields will always word-wrap long lines into multiple-lines and accept Control+Enter as a carriage-return within the field.

CardFile

A "cardfile" is in a format defined by Microsoft's Windows Cardfile application. This useful application can be used to initialize and maintain an "address book" of clients or customers from whom you may expect frequent calls. Any additions and/or modifications made by **Messages** are faithful to the cardfile format.

Information in this online document is subject to change without notice and does not represent a commitment on the part of Software Grove Corporation. The software and/or databases described in this document is furnished under a license agreement or nondisclosure agreement. The software and/or databases may be used or copied only in accordance with the terms of the agreement. It is against the law to copy the software on any medium except as specifically allowed in the license or nondisclosure agreement. The purchaser may make one copy of the software for backup purposes. No part of this online document and/or databases may be reproduced or transmitted in any form or by any means, electronic or mechanical, including photocopying, recording or information storage and retrieval systems, for any purpose other than the purchaser's personal use, without the express written permission of Software Grove Corporation.

© Copyright Software Grove Corporation, 1992-1993. All rights reserved.

Software Grove is a registered trademark and Software Grove Messages is a trademark of Software Grove Corporation.

