

Overview

1 Installing Adobe Type Manager

Describes how to install ATM on your hard disk and how to verify installation.

2 Using Adobe Type Manager

Explains how to use the ATM Control Panel and describes the ATM.INI file.

3 Troubleshooting

Contains troubleshooting information.

Copyright

See also

ATM README.TXT file on the Freelance Graphics for Windows Release 2.01 disks. The ATM README.TXT file is on the disk with the ATM logo.

Copyright

Copyright 1990, 1991, 1992 Adobe Systems Incorporated. All Rights Reserved. Patents pending.

This manual, as well as the software described in this manual is furnished under license and may only be used or copied in accordance with the terms of such license. The information in this manual is furnished for informational use only, is subject to change without notice and should not be construed as a commitment by Adobe Systems Incorporated. Adobe Systems Incorporated assumes no responsibility or liability for any errors or inaccuracies that may appear in this book. Except as permitted by such license, no part of this publication may be reproduced, stored in a retrieval system, or transmitted, in any form or by any means, electronic, mechanical, recording, or otherwise, without the prior written permission of Adobe Systems Incorporated.

Font Foundry is a trademark and Adobe Type Manager, ATM, the ATM Logo, the Adobe logo, the PostScript logo, PostScript and Adobe are registered trademarks of Adobe Systems Incorporated, registered in the U.S.A. HP, PCL, and LaserJet are trademarks of Hewlett-Packard Company. Windows is a trademark and Microsoft is a registered trademark of Microsoft Corporation. Times, Helvetica, and Palatino are trademarks of Linotype AG and/or its subsidiaries. PageMaker is a registered trademark of Aldus Corporation. Ventura Publisher is a trademark of Ventura Software, Inc. WordPerfect is a registered trademark of WordPerfect Corporation. WordStar is a registered trademark of MicroPro International Corporation. TrueType is a trademark of Apple Computer, Inc. Other brand or product names are trademarks or registered trademarks of their respective holders.

Written and designed at Adobe Systems Incorporated, 1585 Charleston Road, Mountain View, CA 94039-7900 /Adobe Systems Europe B.V., Office Centre, Jozef Israelskade 48c, 1072 SB Amsterdam, The Netherlands /Adobe Systems United Kingdom, Hill Place House, 55a High Street, Wimbledon, London SW19 5BA, United Kingdom /Adobe Systems Japan, Swiss Bank House 7F, 4-1-8 Toranomon Minato-Ku, Tokyo, 105 Japan

For defense agencies: Restricted Rights Legend. Use, reproduction or disclosure is subject to restrictions set forth in subparagraph (c)(1)(ii) of the Rights in Technical Data and Computer Software clause at 252.227-7013. For Civilian agencies: Restricted Rights Legend. Use, reproduction or disclosure is subject to restrictions set forth in subparagraph (a) through (d) of the commercial Computer Software Restricted Rights clause at 52.227-19 and the limitations set forth in Adobe's standard commercial agreement for this software. Unpublished rights reserved under the copyright laws of the United States. Printed in the USA.

Writing: Alison Boardman Editing: Tanya Wendling Illustration and book production: Dayna Porterfield, Lauren Buchholz, George Holt Cover design: Gail Blumberg

The ATM team would like to acknowledge the following people who have contributed to the design and testing of ATM version 2.5: Jeronimo Alves, Geoff Arnold, David Glassman, Jim Gutierrez, Curtis Kunz, Jorge Lopez, Sasha Mobley, Shelia Rolfer, Nora Sandoval, Scott Seltz, Greg Walker, Nelson Whitney and Tokuro Yamashiro.

Welcome to Adobe Type Manager - Windows Version, software that produces the sharpest possible type onscreen and on the printed page. Because it incorporates PostScript Type1 outline font technology, the Adobe Type Manager (ATM) program eliminates jagged fonts, so that your screen can display high-quality typefaces of any size or style.

You can freely mix Adobe Type 1 fonts and TrueType fonts on your document pages.

The ATM program also enables even inexpensive printers (dot-matrix and ink jet printers) to print PostScript language fonts that are crisp and smooth. In addition, you can print clear, sharp characters on non-PostScript printers, such as HP LaserJet printers. ATM includes PostScript versions of a set of standard fonts, which eliminate the need to use expensive font cartridges or to take up disk space with additional soft fonts.

The Adobe Type Manager program is easy to use. To install the ATM software, simply start the Installer program and follow the onscreen instructions. Once the ATM software is installed, it works automatically with your Windows word-processing, page-layout, spreadsheet, and graphics applications. Your documents look good both onscreen and when they are printed.

You can install the ATM program on your IBM PC or PS/2, or on a 100%-compatible personal computer. [Installing Adobe Type Manager](#) describes how to install ATM on your hard disk and how to verify installation; [Using Adobe Type Manager](#) explains how to use the ATM Control Panel, and describes the ATM.INI file; and [Troubleshooting](#) contains troubleshooting information.

Adobe Type Manager Help assumes that you have a working knowledge of your personal computer, as well as of Microsoft Windows 3.0 or higher and its operating conventions. For complete instructions on using Microsoft Windows 3.0 or 3.1, see your Microsoft Windows documentation.

The following topics complete this overview within Adobe Type Manager Help:

[System Requirements](#)

[Application Compatibility](#)

[Printers Supported](#)

[Fonts Supported](#)

[Fonts On-the-fly](#)

To use Adobe Type Manager, you need an IBM PC AT or PS/2, or a 100%-compatible personal computer using a 286, 386, 386SX, or 486 processor and running Microsoft Windows 3.0 or higher. You need 1MB of total memory, with 2MB recommended. In addition, the standard ATM package requires about 1.2 megabytes of free disk space on your hard drive.

The Adobe Type Manager program is compatible with most Windows 3.0 or higher applications.

Note

When you add or remove a font while an application is active, the font menus are not always updated automatically. The following applications will update their font menus when the current printer driver is reselected: Ami Pro 3.0, Freehand 3.0, Freelance Graphics 1.0 and 2.0, PageMaker 4.0, Ventura Publisher for Windows, and WordPerfect for Windows 5.1.

Scroll down for information regarding these specific applications: Adobe Illustrator 4.0, CorelDRAW!, Designer 3.1 and Charisma 2.1, FaceLift for Windows, Harvard Draw 1.01, Harvard Graphics 1.01 for Windows, Micrografx PostScript Driver, Norton Desktop for Windows 2.0, Quattro Pro for Windows 1.0, PageMaker 4.0, TypeAlign 2.0, Ventura Publisher Windows Edition, Word for Windows 2.0a, various applications with draft mode printing feature, various font management utilities, virus protection software, and WordPerfect for Windows 5.1.

Adobe Illustrator 4.0

If you have Adobe Illustrator 4.0 and add or remove a font, you must restart Windows for font changes to take effect in Illustrator. If you have a later version of Illustrator, make sure the application is closed before adding or removing fonts. You will see the font change the next time you launch Illustrator. The two enumerator files, PSENUM.DLL and RUN_ENUM.EXE, which register ATM font changes, are located in the Windows system directory. In order for font changes to take effect immediately after restarting Illustrator, you need the latest versions of these files. If your enumerator files are dated 7/17/92 or earlier, you can receive the updates to these files free of charge by contacting ATM Customer Support at (415) 961-4992. These files can also be downloaded from the Adobe CompuServe forum.

CorelDRAW!

CorelDRAW! 3.0 now supports ATM fonts. Adobe strongly recommends obtaining the maintenance release version 3.0b. You must restart CorelDRAW! for font changes to take effect. CorelDRAW! version 2.0 does not support ATM fonts.

Designer 3.1 and Charisma 2.1

The lines used for underlines and strikeouts may appear broken when using an ATM font. This is due to the way these Micrografx products handle character placement.

If you rotate text at a 90 degree angle and then stretch it, you may find that the font will not be properly resized. To avoid this problem, first resize the font and then rotate it.

Rotating stretched text at a 180 degree angle may cause the last letters in the text string to overlap. In this case, first rotate the text by 180 degrees and then stretch it.

Rotated text at certain angles will sometimes print with expanded character spacing on non-PostScript printers. To correct this problem, try using the Print View option and selecting the entire page.

FaceLift for Windows

FaceLift for Windows modifies the printer entries in the WIN.INI file. If FaceLift is installed, the ATM Installer and Control Panel cannot recognize the installed PostScript printers and will not properly add PostScript soft font entries for these printers. Before adding fonts for PostScript printers, you must first temporarily disable the "Print with FaceLift" option in the FaceLift Control Panel. After the fonts have been installed, you can reinstate the FaceLift printer option.

Harvard Draw 1.01

Harvard Draw 1.01 support ATM fonts. You must restart the application for font changes to take effect.

Harvard Graphics 1.01 for Windows

Harvard Graphics cannot rotate ATM fonts. Harvard Graphics uses its own internal scalable fonts for all rotated text.

For font changes to take effect, you must select another printer driver and switch back to the original driver.

If you are using Harvard Graphics and ATM with a high-resolution video driver, you must obtain the maintenance upgrade version 1.021 or higher.

Micrografx PostScript Driver

The Micrografx PostScript driver has a unique printer section structure in the WIN.INI file. PostScript soft fonts cannot be installed to this driver using the ATM Installer and Control Panel. You can, however, install your fonts through the Micrografx Printer Setup menu. See your Micrografx manual for instructions.

Norton Desktop for Windows 2.0

Due to the different structure of the Norton Desktop application groups, the ATM icon might not be properly installed into the Main group when you are running Norton as your desktop shell. If this occurs, you must manually add the ATM Control Panel icon. The ATM Installer will, however, copy all of the necessary files to your system and will configure Windows to run ATM. Refer to the Norton Desktop manual for instructions about installing a new icon in a group.

Quattro Pro for Windows 1.0

Quattro Pro for Windows 1.0 supports ATM fonts. You must restart the application for font changes to take effect.

PageMaker 4.0

For best results with ATM, set the "Vector text above" and "Stretch text above" limits in the Preferences dialog box to 10,000 pixels each.

TypeAlign 2.0

If you receive the error message "Application requested abnormal termination" after installing TypeAlign under Windows 3.1, you must manually remove the entry TALGNDLL.EXE from the load line of the WIN.INI file. This file, TALGNDLL.EXE, is not Windows 3.1 compatible. The new TypeAlign Installer 2.1 will not add this line to the WIN.INI file.

Ventura Publisher Windows Edition

Adobe recommends using version 4.1. For upgrade information, please contact Ventura at (800) 822-8221.

The fonts Helvetica and Times will not display correctly in Reduced View.

Word for Windows 2.0a

Double underlines may print as one thick underline at point sizes larger than 18 points. This is due to the method Word for Windows uses to perform double underlining.

Quotes (characters ALT+0147 and ALT+0148) may print out as double single quotes with some printer drivers. The generic bullet character (ALT+0149) may print out as a lowercase o.

Various Applications with Draft Mode Printing Feature

Some applications which support draft mode printing do not print graphics when they print in draft mode. When ATM is configured to print ATM fonts as graphics, text might not print correctly in draft mode.

Various Font Management Utilities

Some font management utilities, such as FontMinder 1.0 and the font conversion utility AllType, automatically update the ATM.INI file. You must restart Windows for font changes in the ATM.INI file introduced by these utilities to take effect.

Virus Protection Software

Some virus protection software packages will not allow the ATM Installer to replace previous versions of ATM software. If you have this problem, first scan your hard drive for viruses. Then temporarily disable your virus protection software while you install ATM. Remember to re-enable your virus protection software and re-scan your hard disk after installing ATM.

WordPerfect for Windows 5.1

ATM requires the standard Windows printer drivers in order to print ATM text. This means that the WordPerfect for Windows 5.1 printer-specific driver cannot be used, unless you also use a third-party type utility such as PrimeType from LaserTools.

WordPerfect for Windows uses its own screen fonts for preview, so ATM is not active in WordPerfect preview mode

Some special characters in the ANSI character set (with values higher than 128) do not print as displayed. See your Windows documentation for the ANSI character set.

The ATM program works with many different printers, including:

- * PostScript language printers
- * The Hewlett-Packard LaserJet family of laser printers
- * IBM LaserPrinter, LaserPrinter E
- * IBM Lexmark printers
- * IBM Proprinter, Epson, and other dot-matrix printers
- * Most other Windows-supported printers

ATM software is also compatible with all high-resolution PostScript image-setting devices; however, it does not affect the printed output of these devices.

To use ATM with one of the IBM 4029 series printers, you must install version 3.01 or later of the 4029 printer driver and version 1.65 or later of the Generic printer driver. These versions are included with Windows 3.1. If you are using Windows 3.0, contact your printer dealer or manufacturer for the latest drivers.

The ATM program is compatible with PostScript Type 1 format font software, including the Adobe Type Library fonts and Type 1 font packages from Linotype, Agfa-Compugraphic, Varityper, Monotype, Autologic, and The Font Company.

Fonts On-the-fly

When running Windows 3.1, ATM 2.5 will print soft fonts on-the-fly for printers whose drivers support soft font creation. These include HP LaserJet and IBM Lexmark printers. Although some printers may have the capability to handle downloaded printer soft fonts, this feature is dependent on the capability of the Windows printer driver. To verify if a Windows 3.1 printer driver is capable of creating soft fonts, check the Printer Setup Options dialog box from the Windows Printer Control Panel. If you do not see the option "Print TrueType as Graphics," the driver most likely cannot create printer soft fonts on-the-fly.

The ATM package includes the outline fonts you need to display and print high-quality type in various sizes and styles for a standard set of typefaces. Installing ATM software requires copying the software and the desired outline fonts and font metrics files to your hard disk.

To install the ATM software and one outline font and metrics files, you must have at least 640K of space available on your hard disk. The ATM software requires about 600K of disk space; each font occupies about 35K to 40K of disk space. For example, to install the ATM software and the 13 standard outline fonts and metrics files, you must have at least 1.2MB of space available on your hard disk.

The installation procedures assume that Windows 3.0 or higher is installed on your disk. If it is not, please install Windows before you attempt to install the ATM program.

You only install the ATM program once; it works with all PostScript Type 1 fonts and with most Windows applications. When you install ATM, the program automatically installs the fonts that are part of this package. Once the program is installed, you can use the ATM Control Panel to add or remove other PostScript Type 1 fonts.

The following topics provide help on particular types of installation:

[Installing ATM with More Than One Lotus Product](#)

[Installing ATM on a Single-User System](#)

[Installing ATM on a Server](#)

[Installing ATM on a Node](#)

[Verifying Installation](#)

If you are using more than one Lotus product, you only need to install ATM once. However, different Lotus products use different versions of ATM. You should always use the latest version of ATM available to you. If you attempt to install an older version of ATM over a newer version, you will receive a message. Do not install an older version over a newer version.

Since different Lotus products may use different fonts, you may have to add fonts when you install a new product. See [Add and Remove Fonts](#) for more information.

To install the ATM software on your system:

1. Insert the ATM Program Disk into your diskette drive.

If the ATM program is stored on a file server, establish a connection to that server.

2. Start Windows as usual. The Windows desktop appears.
3. Choose Run from the File menu. The Run dialog box appears.
4. Type a:\install (or b:\install if you are installing from the B drive) in the Command Line box; then click OK or press ENTER.

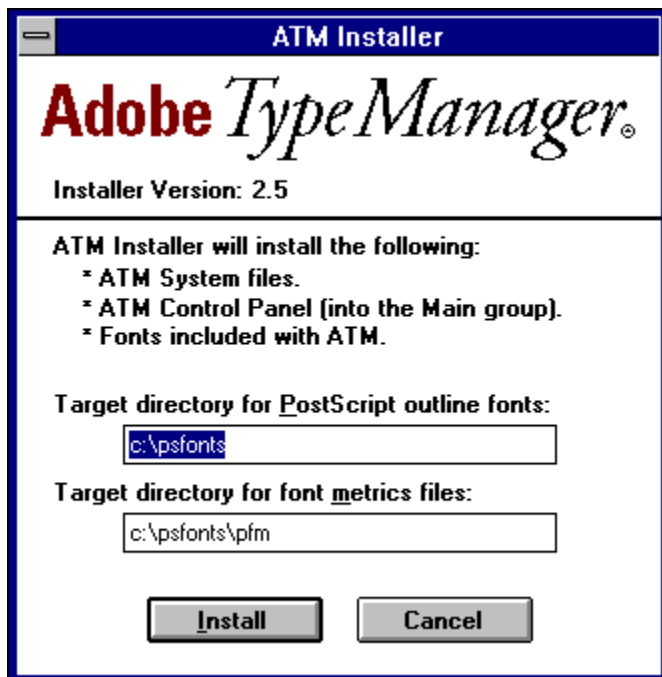
If the ATM program is stored on a file server, use the same drive letter that you used to establish the connection to that server. If you are installing the ATM program from a diskette, replace a: with the letter corresponding to the diskette drive.

If ATM is already running, a dialog box will appear informing you that a version of ATM is running.

When you click OK, the Installer will turn off the currently running version of ATM and restart Windows. The old version of ATM will be overwritten by the new version.

If you receive the error message "Cannot find a:\install.exe," click OK and repeat Steps 3 and 4 as described above.

The ATM Installer dialog box asks you to specify the target hard-disk directory names in which you want to install the metrics and outline font files. The default directory for the outline fonts (PFB files) is c:\psfonts. The default directory for the metrics (PFM) files is c:\psfonts\pfm. You can accept the defaults or change them to install the outline fonts and metrics files in different directories.



If you change the "Target directory for PostScript outline fonts" directory name, the "Target directory for font metrics files" directory name is automatically updated to the same path and a pfm subdirectory is added. You can then accept this name or enter a new directory name.

5. Click Install. A status window appears telling you how the installation program is proceeding.

When ATM is bundled with another product, PCL bitmap fonts are included. If you have an HP LaserJet (PCL 4 or later) printer installed, the installation program asks if you want to install optional PCL bitmap fonts and prompts you to specify a directory for the fonts. The PCL bitmap fonts are not required to print the sharpest possible type on an HP LaserJet printer, but they can help optimize performance.

The default directory for the PCL bitmap fonts is c:\pclfonts. You can accept the default or enter a new directory. The PCL bitmap fonts are installed as "Temporary," so they are downloaded automatically every time you print. For additional information on PCL bitmap fonts, consult your Windows documentation.

When the installation is complete and all files are copied to your hard disk, the final installation screen appears.

6. Click Restart Windows or Exit to DOS. You must restart Windows before you can use the ATM program. Once you restart Windows, the ATM program is turned on.

The ATM Control Panel icon appears on your desktop.

If you have upgraded to ATM version 2.5 from an earlier version of ATM, both the new program icon and the old program icon will appear in the Main group. You should delete the old program icon.

Tip

To use the fonts with older applications, you might need to take the following additional steps:

1. After restarting Windows, start the application and choose Printer Setup from the File menu.
2. Select the name of your printer and choose OK. The new fonts appear in your menu.

Freelance Graphics for Windows includes the ATM Program Disk, which contains the ATM fonts.

The network administrator can copy the ATM files to a network file server; users can then download the program from that file server to their own workstations. To copy the ATM program to a file server:

1. Create a shared directory on a file server.

Users must have Execute privileges for that directory.

2. Copy all the files from the ATM disk to the new shared directory, preserving the directory structure of the ATM disk.
3. Let users know the location of the ATM files.

Novell NetWare Considerations

Although ATM is not a network application, you can print to network printers using ATM. However, you must configure the File Contents section in your print job definition to specify Byte stream instead of Text. The Byte stream option is required because ATM sends raster graphics to non-PostScript printers.

To add fonts from a network drive, you must first load a SHELL.CFG file containing the line "show dots = on". Use IPX.COM to load the SHELL.CFG file.

There is also a 34-character limit for the PostScript target directories for the PFB and PFM files. If your target directory name exceeds this limit, use the MAP ROOT command (instead of the usual map command) to map the directory to a simulated root directory.

If the ATM files have been installed on the server, the Install program will ask users if they want to install Adobe Type Manager after they have completed installing Freelance Graphics. The ATM Install program automatically copies files for the fonts to the user's node.

Users with a server version of Windows must have Write access to the Windows server directory in order to install ATM. Once ATM installation has completed, however, the fonts may not have been copied to the specified location. If not, the user must manually copy the font files from the \atm subdirectory within the directory where the Freelance Graphics server version was installed, then use the Add Fonts feature in ATM to make the fonts available. See Add and Remove Fonts for more information.

Novell NetWare Considerations

Although ATM is not a network application, you can print to network printers using ATM. However, you must configure the File Contents section in your print job definition to specify Byte stream instead of Text. The Byte stream option is required because ATM sends raster graphics to non-PostScript printers.

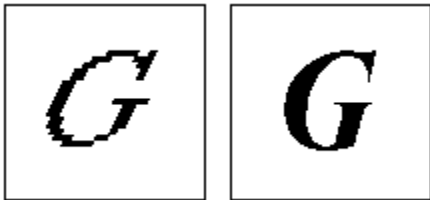
To add fonts from a network drive, you must first load a SHELL.CFG file containing the line "show dots = on". Use IPX.COM to load the SHELL.CFG file.

There is also a 34-character limit for the PostScript target directories for the PFB and PFM files. If your target directory name exceeds this limit, use the MAP ROOT command (instead of the usual map command) to map the directory to a simulated root directory.

After you install the ATM program and restart Windows, start a Windows application. Highlight any text and set it to a relatively large size, such as 72 points. Some applications do not list 72 points as a font size option, so you may have to manually enter 72 for the font size. You will immediately notice that characters are smoother and relatively free of jagged edges. The difference for smaller sizes, like 10-point and 12-point type, may not be as noticeable.

If you are unsure whether ATM is working, there are a few simple things that you can do to see the difference between type with and without the benefit of the ATM program. Try selecting and printing a larger point size, like 72 points, with the ATM program turned on and then turned off. (Turn ATM on and off by clicking the appropriate buttons in the ATM Control Panel. Be sure to restart Windows after you turn the ATM program on or off.) Also, try viewing and printing italic fonts with ATM turned on, then off, and compare the results.

The two uppercase letter G's shown below are screen images of 72-point type in the Times italic font. The image on the left is displayed and printed with the ATM program turned off; the image on the right is displayed and printed with the ATM program turned on.



This chapter gives you tips for using the Adobe Type Manager software. If you encounter any problems, see [Troubleshooting](#).

The chapter includes these topics:

[Use the ATM Control Panel](#)

[Turn ATM On and Off](#)

[Add and Remove Fonts](#)

[Use Pre-built or Resident Bitmap Fonts](#)

[Change the Font Cache Size](#)

[Use ATM Fonts as Graphics \(for Windows 3.1 or later\)](#)

[Remove ATM](#)

[Print on PCL Printers](#)

[Print on PostScript Printers](#)

[Install as Autodownload Fonts for the PostScript Driver](#)

[The ATM.INI File](#)

[Fonts](#)

[Setup](#)

[Settings](#)

[Mono](#)

[Aliases](#)

[Synonyms](#)

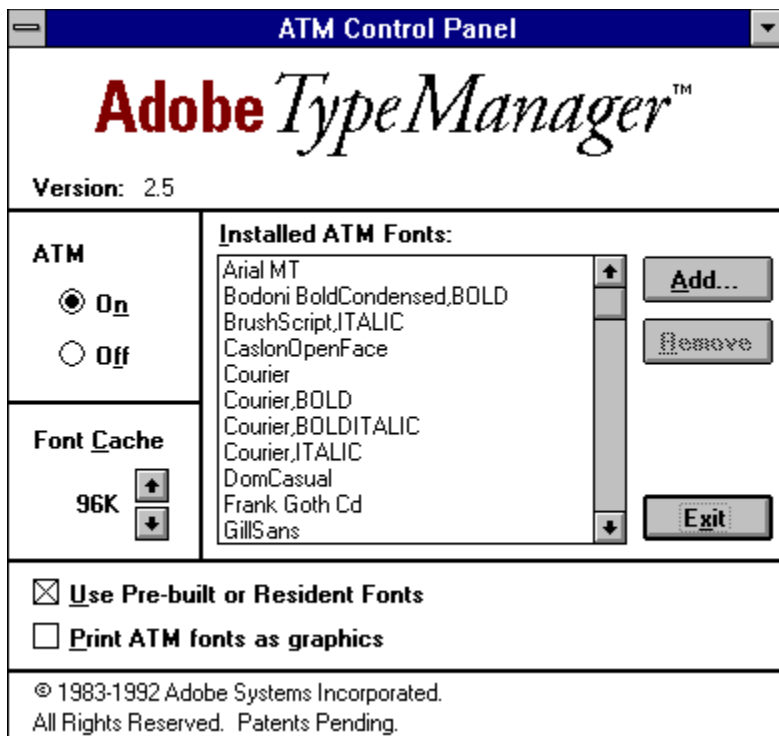
[Colors](#)

Options in the ATM Control Panel let you turn the ATM program on and off, change the font cache size, use pre-built or resident font software, add and remove fonts, and print ATM fonts as graphics. When you change any of the options in the ATM Control Panel, except the Use Pre-built or Resident Fonts option, you must exit and then restart Microsoft Windows for your changes to take effect.

The next section describes the overall procedure for using the Control Panel. The succeeding sections explain in detail how to work with each option.

1. Open the Main group in the Program Manager if it is not already open.
2. Double-click the ATM Control Panel icon.

The ATM Control Panel appears.



3. Make any necessary changes using the Control Panel, as described later in the following sections.
4. Click Exit to close the Control Panel; then exit Microsoft Windows.
5. Click Restart Windows. The new ATM Control Panel settings are now in effect.

Turn ATM On or Off

To turn the ATM program on or off:

1. Double-click the ATM icon to open the ATM Control Panel.
2. Click the On or Off button in the ATM Control Panel.
3. Choose Exit to close the Control Panel.
4. Click Restart Windows from the dialog box that appears. You must restart Windows for your changes to take effect, or you can return to the current Windows session.

Add and Remove Fonts

The ATM program works with PostScript Type 1 font packages that you may purchase separately, such as those from the Adobe Type Library. You can install additional fonts in your system by clicking the Add button, or remove fonts by highlighting a font and clicking the Remove button in the ATM Control Panel. The installed fonts are listed in the ATM Control Panel.

There is no longer a pre-defined limit to the number of fonts you can install with the ATM Control Panel. Windows does, however, limit initialization files (including the ATM.INI and the WIN.INI files) to a size of 64K. If this limit is reached, Windows cannot open, read, or write properly to these INI files.

For Windows 3.0 and 3.0a, Microsoft recommends keeping initialization files smaller than 32K in size. Following this recommendation, the maximum number of fonts that can be listed in the ATM.INI file for Windows 3.0 or 3.0a is around 450 fonts. For Windows 3.1, the only limit is the 64K maximum file size, which is large enough for about 900 fonts. Many applications limit the number of fonts that can be displayed in their font menus. Although you may see over 500 fonts in the ATM Control Panel, an application may be able to show only 200 fonts. If this problem occurs, try reducing the number of fonts you have installed.

The more fonts you add with ATM, the longer it takes Windows to load. The exact time depends on the type of processor you have and your system configuration. If you feel that Windows is taking too long to start, you might want to free up more memory available to Windows and/or reduce the total number of fonts installed to the sets of fonts you frequently use.

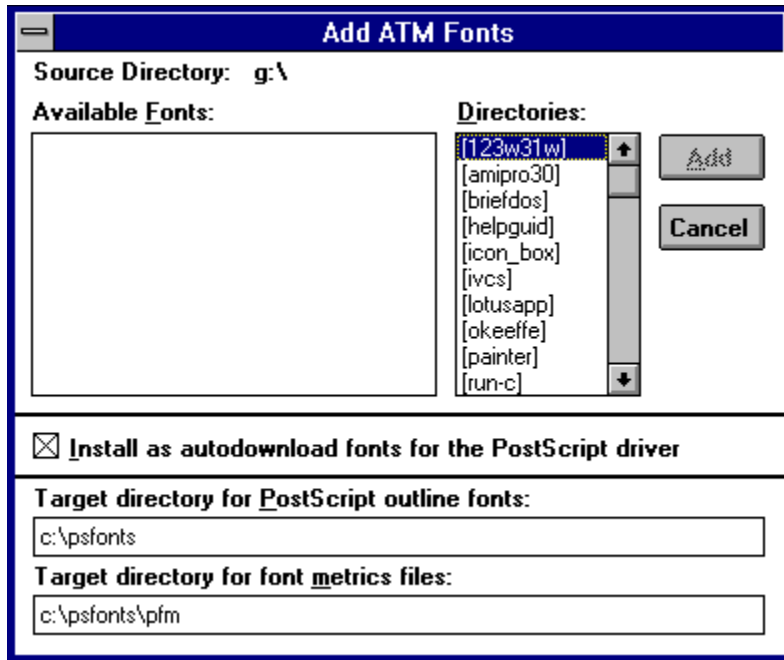
Note

When you add or remove fonts using the ATM 2.5 Control Panel, the PostScript soft font entries in the WIN.INI file are automatically updated. If you change printer ports, however, Windows will not transfer the font entries from printer port to printer port. You must reinstall your fonts so that the font entries will be written to the newly selected port. ATM version 2.5 now removes the PostScript soft font entries when you remove a font using the ATM Control Panel.

Add Fonts

1. Open the ATM Control Panel.
2. Click the Add button.

The Add ATM Fonts dialog box appears.



The top part of the dialog box enables you to locate the directory or disk where the fonts currently reside. The Available Fonts list box lists the names of the outline fonts in the current directory. The bottom part of the dialog box allows you to specify the directory in which the fonts will be installed.

3. In the box labelled Target directory for PostScript outline fonts, you can accept the default, c:\psfonts, or type the name of the directory to which you want to copy the font outline files. If the directory name you enter does not correspond to an existing directory, ATM will create a new directory. Any new directory name you type automatically appears in the box labelled Target directory for font metrics files, within a PFM subdirectory. You can accept this name, or enter the name of another directory for the font metrics files.
4. Insert the appropriate disk according to the type of PostScript fonts you are adding.
5. Select the drive or directory containing the fonts from the Directories list box.
6. Select the fonts you want to add and click Add. You may select as many fonts as you want. If you want to select all of the fonts in the list box, click to select the first font in the list, scroll to the end of the list, and then hold down the SHIFT key and click to select the last font. If you want to select specific fonts in the list, hold down the CTRL key as you click the names of the fonts you want to add.

Notes

You should install each style of a font you want to use. For example, if you are installing the Times font, you should also install Times.BOLD, Times.ITALIC, and Times.BOLDITALIC. However, if disk space is limited, you can install the plain face and ATM will approximate the other styles. Keep in mind, however, that ATM will not approximate the other styles if you are printing to a PostScript printer.

If you are using a PostScript printer and the fonts you are adding are resident in the printer (in a type cartridge or attached hard disk, for example), or if you plan to download the fonts manually each time you use them, unmark the Install as Autodownload Fonts for the Postscript Driver check box.

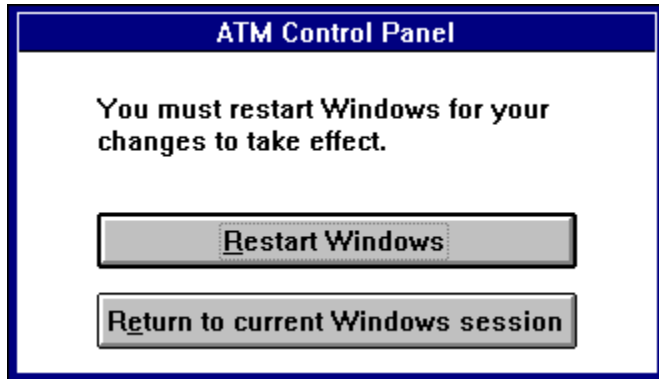
7. At this point, depending on the type of fonts you are adding, the program may prompt you for outline font (.PFB) files. If the program does not prompt you for any additional files, go on to Step 8.

Once the fonts have been loaded, the new fonts appear in the Installed ATM Fonts list box in the ATM Control Panel.

- Click the Exit button to complete the font installation. A dialog box appears, asking whether to restart Windows or return to the current Windows session. Click Restart Windows to have your changes take effect.

Note

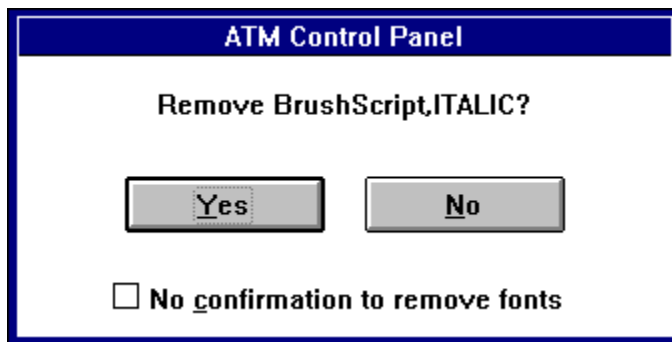
To use fonts with older applications, you might need to take the following additional steps. After restarting Windows, start the application and choose Printer Setup from the File menu; then select the name of your printer and choose OK. The new fonts appear in your font menu.



Remove Fonts

- In the ATM Control Panel, select the fonts you want to remove. When you finish selecting fonts, click the Remove button.

The ATM confirmation dialog box appears for each selected font asking you to confirm that you want to remove the font.



- Click Yes to remove the font. To remove the remaining fonts without confirming each one, mark the box labelled No confirmation to remove fonts.

Notes

Removing a font does not delete the corresponding PFB or PFM files from the hard disk or modify the list of fonts in your WIN.INI file. This means that the fonts will still be available for your printer, but won't be rasterized for the screen.

If you manually remove soft font entries from the PostScript printer section of the WIN.INI file, remember to adjust the line "softfonts=nn" to show the new total number of soft font entries. ATM will automatically renumber your soft fonts when you remove them using the ATM Control Panel, but cannot correct misnumbered font entries.

Use Pre-Built or Resident Fonts

When pre-built fonts (soft fonts) or resident fonts (cartridge fonts or fonts built into the printer) are available, the ATM program will use them if you mark the Use Pre-built or Resident Fonts check box in the ATM Control Panel. This will reduce the amount of printer memory required to print some pages, and may improve performance.

In some situations, however, you may not want the ATM program to use pre-built or resident bitmap fonts.

- * If your application supports auto-kerning, the ATM fonts will be kerned but the pre-built or resident bitmap fonts will not.
- * If you are printing under Windows 3.1 to printers that support soft fonts on-the-fly, you may want to turn this option off, since it is actually more efficient to have the printer driver create the font rather than letting it download the pre-built font.
- * You may find that when this option is marked, resident or soft fonts will not be masked by your printer if a graphic image is placed on top of the text. With the Use Pre-built or Resident Fonts option marked, your printer will print the text on top of the graphic image. (This type of behavior also occurs when you turn ATM off.) When you unmark the Use Pre-built or Resident Fonts check box, your text and graphic images will print as displayed onscreen. If you are printing ATM fonts as soft fonts, you may have to use the "Print ATM fonts as graphics" option to have graphic objects and text print together correctly.
- * If you change the printer resolution, the ATM text changes accordingly but the pre-built or resident bitmap fonts will not.

Note

Turning the pre-built or resident font option on and off does not require restarting Microsoft Windows; however, it may be necessary to quit and restart applications for this option to take effect.

Change the Font Cache Size

The size of the font cache determines the amount of system memory available to store font information. The default setting for the font cache size is 96K. You can increase the font cache size from 64K to 32,000K. The recommended value is 64K for each megabyte of memory. When used with Freelance Graphics for Windows, the minimum recommended size is 192K; less than that will result in excessive thrashing.

If you are using many typefaces or sizes, you may want to increase the font cache size to improve performance. Experiment with the font cache size to see how it affects performance. Keep in mind that memory you dedicate to the ATM font cache is not available for other Windows functions.

If your applications seem unusually slow when you scroll, change faces, or display fonts, your font cache size is probably too small. On the other hand, if you are using a personal computer with only 1MB of total memory, you probably won't have enough extra memory to increase the font cache size. In fact, in this case, you may need to reduce the font cache size if you are also using applications that require a lot of memory.

To change the font cache size:

1. Open the ATM Control Panel.
2. Click the up arrow in the Font Cache box to increase the size, or click the down arrow to decrease the size.
3. Click the Exit button. A dialog box appears, asking whether to restart Windows or return to the current Windows session. You must click the Restart Windows button for your change to the font cache size to take effect.

Use ATM Fonts as Graphics (for Windows 3.1 or Later)

If you are using Windows 3.1 or later with a printer that uses downloaded fonts (such as a PCL printer), you can use the Print ATM fonts as graphics option to solve three kinds of problems:

- * PCL clone printers do not support downloaded fonts. Some PCL clone printers do not support downloaded fonts; they use some other internal font when you try to print a Type 1 font.
- * Documents with too many fonts fail to print to a LaserJet Series II printer. LaserJet Series II printers cannot print documents that contain more than 16 downloaded fonts. For the purpose of this 16-font limit, every style (such as bold and italic) of every font size is considered a different font.
- * Documents with mixed text and graphics fail to print correctly. Some applications let you combine text and graphics in such a way that images fail to print correctly on some printers.

Printing ATM Fonts as Graphics

To print ATM fonts as graphics, follow these steps:

1. Open the ATM Control Panel.
2. Select the Print ATM fonts as graphics option.
3. Click Exit to close the ATM Control Panel. A dialog box appears, asking whether to restart Windows or return to the current Windows session. You must click the Restart Windows button for your change to the font cache size to take effect.

To remove the ATM program from your system:

1. Exit Windows.
2. If you installed additional fonts, copy them to a temporary directory.
3. Remove all Windows soft fonts from your WIN.INI file.

Soft fonts are listed with the installed printers. In the example below, an asterisk (*) marks the lines to be deleted:

```
[PostScript,LPT2]
```

```
device=14
```

```
color=2
```

```
feed1=1
```

```
*softfonts=11
```

```
*softfont1=c:\psfonts\pfm\_a_____.pfm,c:\psfonts\_a_____.pfb
```

```
*softfont2=c:\psfonts\pfm\bdbc____.pfm,c:\psfonts\bdbc____.pfb
```

4. In the following two lines of your SYSTEM.INI file in the Windows directory, delete the references to the ATM program (the boldface sections shown below).

```
system.drv=atmsys.drv
```

```
atm.system.drv=system.drv
```

The resulting line should leave intact the first and last values (plus one "="), combined into a single line. For example:

```
system.drv=system.drv
```

These lines may be different on some systems, for example, the Hewlett-Packard Vectra.

5. Delete the ATM.DLL, ATM16.DLL, or ATM32.DLL file, and the ATMSYS.DRV file from your WINDOWS\SYSTEM directory. If you did not have a version of ATM prior to Version 2.0, you will not have the ATM.DLL file.
6. Delete the ATM.INI and ATMCNTRL.EXE files from your Windows directory.
7. Delete the .PFM, .PFB, .PCL, or .SFP files from the directories in which you installed them.

For optimal performance, print through a parallel (LPT) port.

ATM can use pre-built fonts (soft fonts) or resident fonts (cartridge fonts or fonts built into the printer) when the exact font size and style are available. This reduces the amount of printer memory required to print some pages and may improve printing performance.

For the highest print quality, Adobe recommends you set your printer and printer driver to the highest print resolution. Certain PCL printer drivers do not properly set the print resolution. They may appear to be set at 300 dpi resolution in the Windows Printer Control Panel even though they are set to a lower resolution.

Some applications fail to print correctly when your PCL printer resolution is not set to 300 dpi. Excel 3.0a, for example, prints blank cells instead of ATM fonts when printing ATM fonts as graphics and your PCL printer is not set to 300 dpi. If you suspect your PCL printer driver is not set to 300 dpi, set the resolution to 75 dpi, save this option, and then set the resolution back to 300 dpi. When your printer resolution is set to 300 dpi, the line "prtresfac=0" appears in the PCL printer entry in the WIN.INI file.

Note

ATM text in Freelance Graphics for Windows will print correctly when any Windows 3.1 PCL printer driver is configured.

If you are using ATM with a PostScript printer, PostScript soft fonts are automatically downloaded when you print; however, you may want to download fonts that are not resident in your printer prior to printing. Downloading fonts before printing can improve printing performance. This feature is especially useful if you frequently use the same fonts on your PostScript printer.

Install as Autodownload Fonts for the PostScript Driver

The Microsoft PostScript driver uses the section [PostScript, portname] in the WIN.INI file to determine the available installed soft fonts. In the following example the PostScript printer is configured for the printer port LPT1.

[PostScript, LPT1]

softfonts=2 softfont1=c:\psfonts\pfm\tkrg____.pfm;c:\psfonts\ltnrg____.pfb softfont2=c:\psfonts\pfm\tkb____.pfm;c:\psfonts\ltnb____.pfb

Each soft font entry is made up of two parts: the first part indicates the path to the printer character metrics file (PFM) and the second part defines the path to the font outline file (PFB) for every font. The PFM file is necessary for all fonts whose character metrics are not hard-coded in the PostScript driver. The PFB entry is only needed when you want the driver to download the font outline with every print job.

To configure the Microsoft PostScript driver to automatically download soft fonts at print time, install the font with the option "Install as autodownload fonts for the PostScript driver" marked. When this option is marked, ATM will add the PFM and PFB entries for all fonts. This feature is helpful if your PostScript printer does not contain the standard Base35 fonts. The Base35 fonts are AvantGarde, Bookman, Courier, Helvetica, Helvetica-Narrow, NewCenturySchoolbook, Palatino, Symbol, Times, ZapfChancery, and ZapfDingbats. These fonts are resident in most newer PostScript printers.

If you are adding fonts to ATM that are already resident in the printer, you can unmark this option to instruct the printer driver not to send the font outline to the printer at print time. With this option unmarked ATM adds only the PFM entries for the non-Base35 fonts. Neither the PFM entry nor the PFB entry is added to the WIN.INI file for the Base35 soft fonts when this option is unmarked. The soft font entries for these fonts do not need to be present in the WIN.INI file because the font metrics are hard-coded in the driver. If present, they will be ignored by the PostScript driver at print time.

In other words, the PostScript driver will not download the outlines of these fonts if it sees from the printer driver configuration in the Windows Printer Control Panel that the fonts are already present in the printer.

The only exception is the font Bookman. If the Bookman PFB entry is present in the WIN.INI file, the driver will download the outline file at print time. To correct this problem and to force the driver to use the Bookman font internal in the printer, reinstall the four styles of Bookman with the option "Install as autodownload fonts for the PostScript driver" unmarked.

The ATM installation process creates a text file called ATM.INI in the Windows directory. The directory names you set during the installation, any changes you make in the ATM Control Panel, and other important parameters are recorded in the ATM.INI file.

Scroll down to see technical information on the ATM version 2.5 initialization file. This file is divided into seven sections: Fonts, Setup, Settings, Mono, Aliases, Synonyms, and Colors.

Note

If you are upgrading from a previous version of ATM, the installation adds all the fonts listed in the current ATM.INI file. It also adds any PostScript fonts that are listed as soft font entries for PostScript printers in the WIN.INI file.

Fonts

The Fonts part of the ATM.INI file lists the installed fonts and the full path of the directory that contains the corresponding PFM and PFB files.

The fonts listed here are available to all non-PostScript printers for screen display and printing. The fonts available to PostScript printers are based on the PostScript soft font entries in the specific printer section of the WIN.INI file and the ROM-based fonts in the printer. If a font is listed in both the WIN.INI and ATM.INI files, ATM will rasterize the font on the screen.

The printing of fonts to PostScript devices is solely the responsibility of the PostScript driver and Windows. ATM does not have to be active when printing to PostScript devices.

Although a particular application will allow you to bold or italicize a certain font, your PostScript printer will not be able to render the bold or italic font unless an outline for the bold or italic font is available. On non-PostScript printers, however, ATM will synthesize a bold, italic, or bold italic version of a font based on the roman outline if the outline of the desired font style is not present.

Setup

This part of the ATM.INI file lists the default directories for PFM and PFB for the ATM Control Panel.

PFM_Dir Default PFM directory for the ATM Control Panel when adding PostScript fonts.

PFB_Dir Default PFB directory for the ATM Control Panel when adding PostScript fonts.

Settings

The Settings part of the ATM.INI file defines the overall ATM configuration parameters. The font cache size and ATM on/off parameters are specified directly in the ATM Control Panel.

The BitmapFonts= parameter is set in the ATM Control Panel with the Use Pre-built or Resident Fonts check box. The default setting is On. ATM will defer to screen fonts, resident printer fonts, and printer soft fonts rather than rasterizing the font itself if the bitmap of the font requested is available.

The ATM program will substitute a font specified as a Synonym when the font size is larger than the size specified with the SynonymPSBegin parameter. This parameter allows the ATM program to optimize its performance with Windows display fonts. The default is 9.

The QLCDir parameter specifies the directory that contains a file that the ATM program uses to check for working fonts every time you start Microsoft Windows with the ATM program on. This parameter helps ATM start quickly, especially when you are working on a network and the ATM font software resides in a remote directory. This parameter defaults to the directory containing the ATM font software as specified

during the installation.

The version number of the ATM software is listed in the Settings part of the ATM.INI file as is the DownloadFonts= switch. The DownloadFonts switch instructs ATM to print text as soft fonts for Windows 3.1 printer drivers that support this feature.

Mono

This part of the ATM.INI file contains a list of monospace fonts.

Aliases

Aliases allow you to substitute one font name for another to ensure compatibility with your existing documents. For example, you can specify that Tms Rmn and Times are the same font; then the ATM program will automatically convert any text set as Tms Rmn to Times.

When the Use Pre-built or Resident Fonts option is marked, ATM uses the resident bitmapped fonts for point sizes for which bitmaps exist. When the Use Pre-built or Resident fonts option is unmarked, ATM uses the PostScript outline font to rasterize all sizes of the aliased bitmapped font.

Helv=Helvetica	The fonts left of the equals sign are Windows bitmapped fonts. By using PostScript outline fonts, ATM can rasterize a smooth font when these fonts are requested at sizes not available in bitmapped form.
Tms Rmn=Times	
Courier=Courier	
Roman=Times	These settings enable ATM to use PostScript outlines instead of the standard Windows vector fonts.
Modern=Helvetica	
Courier=Courier	This setting is needed if an application requests the smallest available fixed-pitch font. If this line is not present, ATM provides some applications with a 1-point Courier font.
Helv=Arial MT	If you have received ATM bundled with another application, you may have the fonts Arial MT and TimesNewRomanPS instead of the standard fonts Helvetica and Times. You should have these lines present in both the Aliases and Synonyms sections. These settings tell ATM to use internal printer fonts when printing Arial MT and TimesNewRomanPS to a PostScript printer. This reduces the time required to print documents and improves the quality of bold and italic text styles.
Helvetica=Arial MT	
Tms Rmn=TimesNewRomanPS	
Times=TimesNewRomanPS	
	If you have all four faces (Helvetica, Times, Arial MT, and TimesNewRomanPS), you should use the font pairs Helv=Helvetica and Tms Rmn=Times in these sections.

Synonyms

Unlike the font pairs in the Aliases section, the font pairs in the Synonyms section are interchangeable. For example, when the Helv font is requested in a point size not available in bitmapped form, the Helvetica font is used instead. However, in Windows 3.0 and 3.0a, when the Helvetica font is requested and a bitmapped Helv font of the exact size is available, ATM will use the Helv bitmap to display the font

on the screen; this improves performance.

In Windows 3.1, the screen fonts Helv and Tms Rmn have been replaced by MS Sans Serif and MS Serif, so screen font deferral does not apply.

Colors

This section may be added to the ATM.INI file to override internal ATM defaults. The switch is global for all applications. While enabling this switch may be useful for a special purpose in a particular application, it can also produce unexpected results in other applications you are using at the same time when this switch is in effect.

PrintColorGraphics=Off This switch instructs ATM to print colored text as soft fonts under Windows 3.1 rather than as dithered graphics. The printer driver must support soft font creation for this switch to work. For most printer drivers the resulting soft fonts will print as black or white fonts.

This chapter contains solutions to problems you may encounter when installing or using the ATM program. The topics include the following:

ATM Disabled

Documents Containing the Arial MT and TimesNewRomanPS Fonts Print Slowly

Font Menu

Helvetica and Times Display Upside-down

Installation Halted

Jagged Characters

Justified Text Exceeds Right Margin on a Screen

Printing

System Messages

Problem: The ATM installation process is halted before completion.

Solution: Make sure that:

- * You do not have memory-resident programs interfering with or taking memory from the installation
- * You have at least 1.2MB of hard-disk space

Problem: The ATM startup icon is crossed out, or the ATM Control Panel shows that the program is "inactive."

Solution: Make sure that:

- * Fonts appear in the ATM Control Panel
- * Your system is running in standard or 386 enhanced mode
- * Your SYSTEM.INI file contains the following entries:

system.drv=atmsys.drv

atm.system.drv=system.drv

Problem: Characters appear jagged onscreen and/or when the document is printed.

Solution: Make sure that:

- * You restarted Windows after you installed the ATM program.
- * Windows is running in standard or 386 enhanced mode. The ATM program will not run in real mode.
- * You are using a PostScript language Type 1 font program, such as those provided with ATM.
- * The ATM program is turned on in the ATM Control Panel.
- * Your printer is set for the highest resolution in its setup dialog box.

Problem: Characters appear jagged onscreen but print properly on a PostScript printer.

Solution: For each such PostScript language printer font, install the corresponding outline font program using the ATM Control Panel. For more information on the ATM Control Panel and installing fonts, see [Using Adobe Type Manager](#).

Problem: The ATM fonts do not appear in the Font menu of your application.

Solution: Reselect your printer from within the application.

Also verify that the font metrics (PFM files) and PostScript language outline font programs (PFB files) are installed properly. If necessary, add the fonts again using the ATM Control Panel. For more information on the ATM Control Panel and installing fonts, see [Using Adobe Type Manager](#).

Problem: Computer or printer performance seems slow.

Solution: Increase the size of the font cache. The default setting is 96K. When used with Freelance Graphics for Windows, the minimum recommended size is 192K.

See also

[Change the Font Cache Size](#)

Problem: A memory error occurs when you open an application with the ATM program turned on.

Solution: The current system configuration does not leave enough memory for your application. Try decreasing the ATM font cache size, decreasing the number of files specified in your CONFIG.SYS file, removing any networking software, or decreasing the size of SMARTDRV.SYS. In 386 enhanced mode, you can also increase the size of your permanent swap file, if you are using one.

Problem: A PCL printer indicates an "Out of memory" error condition.

Solution: If you have the correct soft font or cartridge font installed, make sure that the Use Pre-built or Resident Fonts option is marked in the ATM Control Panel. Also, consider adding more memory to your printer. See [Add and Remove Fonts](#) for more information.

Justified text sometimes extends beyond the right margin onscreen, but prints correctly. This happens particularly with small point sizes. Two situations can cause this problem:

- * Windows uses a screen font for a font of a different size. Turning off the Use Pre-built or Resident Fonts option in the ATM Control Panel corrects this problem.
- * The problem is caused by roundoff errors occurring when an application calculates the total width of a line of text. This problem cannot be corrected.

If, after upgrading to Windows 3.1, you find that documents containing the fonts Arial MT and TimesNewRomanPS print more slowly on a PostScript printer, you can take the following steps to improve printing speed. These fonts are often used as substitutes for the fonts Helvetica and Times when ATM is bundled with another product. If you are using the fonts Arial MT and TimesNewRomanPS, add the following lines to both the [Aliases] and [Synonyms] sections of your ATM.INI file.

Helvetica=Arial MT

Times=TimesNewRomanPS

The lines Helv=Arial MT and Tms Rmn=TimesNewRomanPS should already be present in both of these sections.

See also

[The ATM.INI File](#)

If the fonts Helvetica and Times display upside-down, check in the ATM Control Panel to see if you have all of the following fonts installed:

- * Helvetica
- * Times
- * Arial MT
- * TimesNewRomanPS

If so, you must manually edit the ATM.INI file and replace these lines in the [Aliases] and [Synonyms] sections of the ATM.INI file

Helv=Arial MT

Helvetica=Arial MT

Tms Rmn=TimesNewRomanPS

Times=TimesNewRomanPS

with the lines

Helv=Helvetica

Tms Rmn=Times

See also

[The ATM.INI File](#)

