

Overview

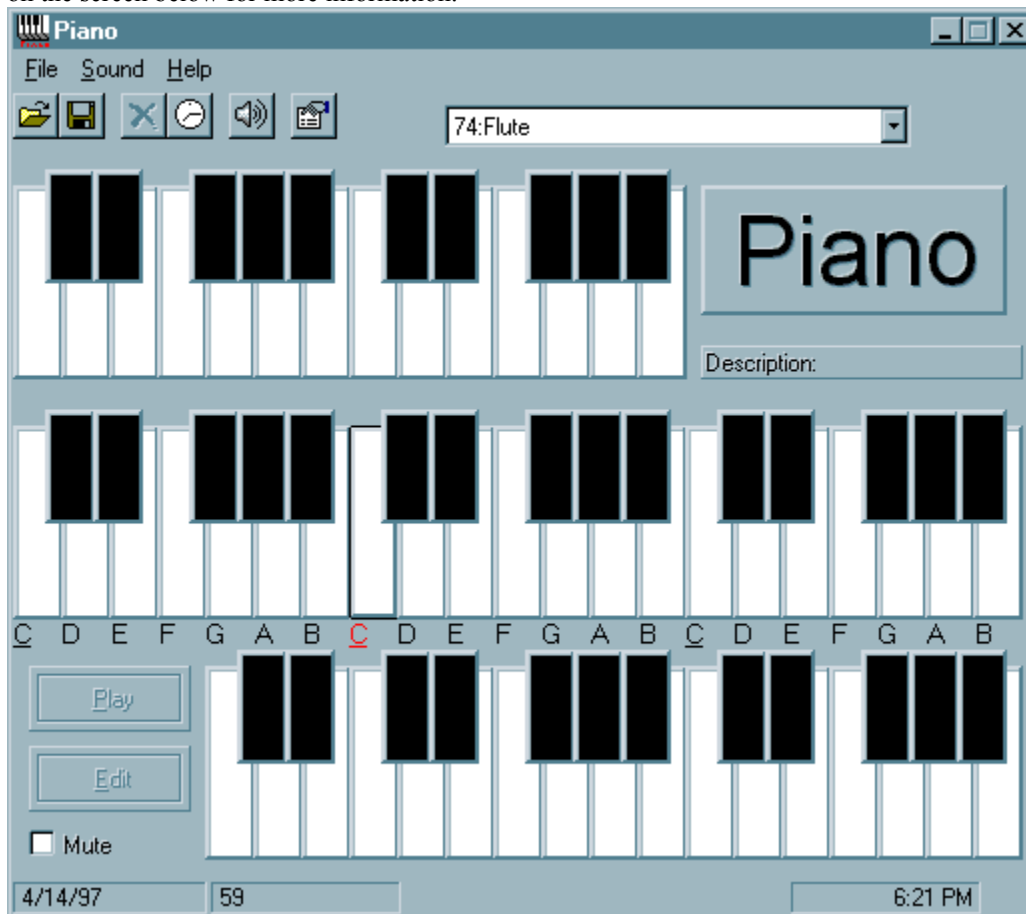
ComputerPiano is a powerful software synthesizer. It could produce a wide variety of instrument sounds, such as strings, brass, woodwinds, and some sound affect supported by midi. The sound quality it produce depends on the sound card you have.

With ComputerPiano you could use the computer's keyboard just like the one on a real piano, or use a mouse to press the buttons on the screen. You could also record it.

The screen

The Screen

Use the buttons on the screen to make a sound. Use the menu to use some other features of the program. Click items on the screen below for more information.



The Menu

The Menu

File Menu Use this menu to open, save, set the record mode, clear the record, and exit.

Sound Menu Use this menu to play, edit, turn on or off the chord, and set the options.

Help Menu Use this menu to get the help and the about dialog.

File Menu

Open Opens a file for play or record and modify.

Save Save the file in memory to disk. If you did not specify a name for the file before, it is the same as Save As command.

Save As Prompt you for a file name, and save the record to disk.

Record When checked, the record mode is on. When not checked the record mode is off.

Clear Record Select this command will clear any sound you had record before.

Exit Exit the program.

Sound Menu

Play Plays the sound you have record. Only available when record mode is on.

Edit Shows up the edit window for you to edit the sounds you have record.

Reset Sound Stops all sound that is playing.

Chord Turn on or off the chord feature. The chord feature allows you to play more than one note at a time.

Options Pups up the options dialog. See [RePlay Options](#), [Show Options](#), and [Sound Options](#).

Help Menu

Content Shows up this menu.

About Shows the about dialog.

Keyboard Commands

A combination of Shift+mouse will cause the note or notes to keep on playing. Until you click on it again.

A combination of Ctrl+key will cause the note or notes to keep on playing. Until you click on it again.

You can press many keys at once.

Below is a map on how you can use the keyboard just like the piano's.

Key	Note Produced
q	lower C
2	lower C sharp or D flat
w	lower D
3	lower D sharp or E flat
e	lower E
r	lower F
5	lower F sharp or G flat
t	lower G
6	lower G sharp or A flat
y	lower A
7	lower A sharp or B flat
u	lower B
i	middle C
9	C sharp or D flat
o	D
0	D sharp or E flat
p	E
[F
=	F sharp or G flat
]	G
a	G sharp or A flat
z	A
s	A sharp or B flat
x	B
c	Up one C
f	Up one C sharp or D flat
v	Up one D
g	Up one D sharp or E flat
b	Up one E
n	Up one F
j	Up one F sharp or G flat
m	Up one G
k	Up one G sharp or A flat
,	Up one A
l	Up one A sharp or B flat
.	Up one B
/	Up two C
'	Up two C sharp or D flat

Using The Mouse

Change The Instrument

Using The Mouse

You can use the mouse to make a sound. First, move the mouse to the button you want. Second, press the mouse and piano will begin to make a sound until you release the mouse.

Keyboard Command

Change The Instrument

Changing The Instrument

To change the instrument that you are using, click on the combo box at the top of the screen and select the instrument or using the sound tab in the options dialog.

Sound Options.

Record And RePlay

You can turn on the record mode by click on the record command on the file menu or click the clock on the toolbar. Once the record mode is on, piano will record every key or mouse you press, and the instrument, channel you are using.

You could replay the sound you record by click on the play button or the play command on the sound menu.

Change The Instrument

Sound Options

RePlay Options

File Format

File Format

A .psm file is a ordinary ASCII text file.
Below is a map explaining the file format.

FILE START

description

1(type)

60(note)

1(channel)

0(time)

74(instrument)

2(type)

60(note)

1(channel)

20(time)

74(instrument)

END FILE

The first line of the file stores the description.

Then every five line stores on note's start and stop.

The first line in the section stores the type of the action. 1=down, 2=up.

The second line stores the note. 60=middle C

The third line stores the channel.

The forth line stores the time after the previous event's time. 100=1 second.

The fifth line stores the instrument used by this note.

File Menu

Record And RePlay

RePlay Options

The following options are showed on the replay tab of the options dialog.

RePlay Type

Legato	The replay will become smoothly and connectedly.
Normal	The replay will be about the same when you record it.
Staccato	The replay will become short, clipped, and separate.

RePlay Speed

Slow	The replay become two times slower.
Normal	The replay about the same as you record it.
Fast	The replay become as half as long as the original.
Custom	This option let you specify the rate. The smaller the faster.

Show Play Dialog When checked, the play command will pop up a dialog to play the sound. If not checked, the sound will play at the main window of piano.

Show Options

The following options are showed on the show tab of the options dialog.

Note Type

Numbers The note column in the edit window and the play dialog shows numbers for each note.
For example 60 for middle C.

C,D,E,F,G,A,B The note column in the edit window and the play dialog shows letters for each note. For
example 0C for middle C.

Highlight note when pressed If checked, the buttons on the main window of piano will be highlight when
pressed by using mouse or keyboard.

Sound Options

Channel(1-16) Specify the channel for the sound going to use.

Instrument Change the instrument. See [Change The Instrument](#)

Don't stop sound when holds shift If checked, when you press shift and move the mouse over the buttons, the sound wont stop.

Volume Set the volume of the sound. The more to the right, the more louder.

MidiOutOpen Open the midiport again if you closed it using the button MidiOutClose. Midiport is automaticaly opened when you start the program and closed when you quit it.

MidiOutClose Close the midiport.

synthesizer An electronic sound generator.

The Toolbar

RePlay Type

Legato	The replay will become smoothly and connectedly.
Normal	The replay will be about the same when you record it.
Staccato	The replay will become short, clipped, and separate.

RePlay Speed

Slow The replay become two times slower.

Normal The replay about the same as you record it.

Fast The replay become as half as long as the original.

Custom This option let you specify the rate. The smaller the faster.

Show Play Dialog When checked, the play command will pop up a dialog to play the sound. If not checked, the sound will play at the main window of piano.

Note Type

Numbers The note column in the edit window and the play dialog shows numbers for each note.
For example 60 for middle C.

C,D,E,F,G,A,B The note column in the edit window and the play dialog shows letters for each note. For
example 0C for middle C.

Highlight note when pressed If checked, the buttons on the main window of piano will be highlight when pressed by using mouse or keyboard.

Channel(1-16) Specify the channel for the sound going to use.

Instrument Change the instrument. See [Change The Instrument](#)

Don't stop sound when holds shift If checked, when you press shift and move the mouse over the buttons, the sound wont stop.

Volume

Set the volume of the sound. The more to the right, the more louder.

MidiOutOpen Open the midiport again if you closed it using the button **MidiOutClose**. Midiport is automaticaly opened when you start the program and closed when you quit it.

MidiOutClose Close the midiport.

Mute Command

When checked, there will be no sound when you press the mouse or keyboard, but you can still record.

