

WELCOME TO STARSHINE SOFTWARE ULTIMATE SCREEN SAVERS

Setting up a screen saver

Installation of each saver

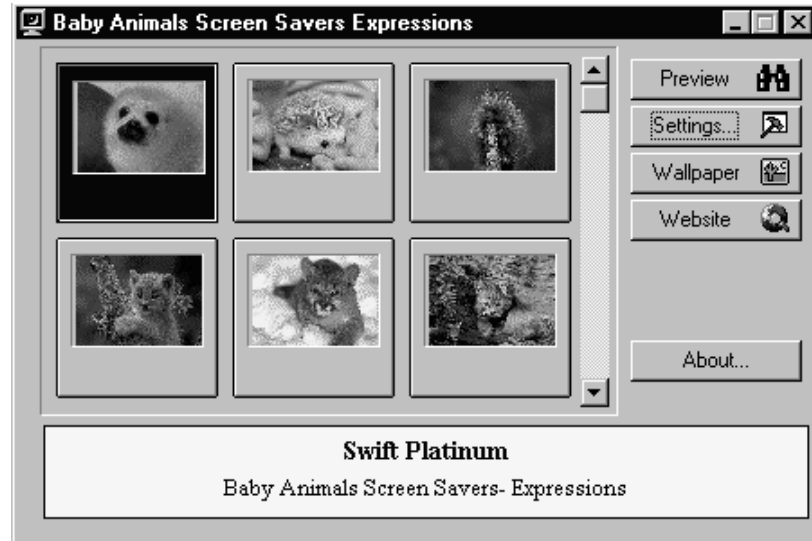
Each screen saver is provided in a "package" file. **A screen saver must be installed in Windows before it can be used.** This is only required to be done *once for each individual screen saver*. This is a requirement of Windows.

Simply click on the program that you want to install, or, RUN each program from the START menu.

Settings

Wallpaper, Security, Display

After the screen saver is installed, you will then see the following display:



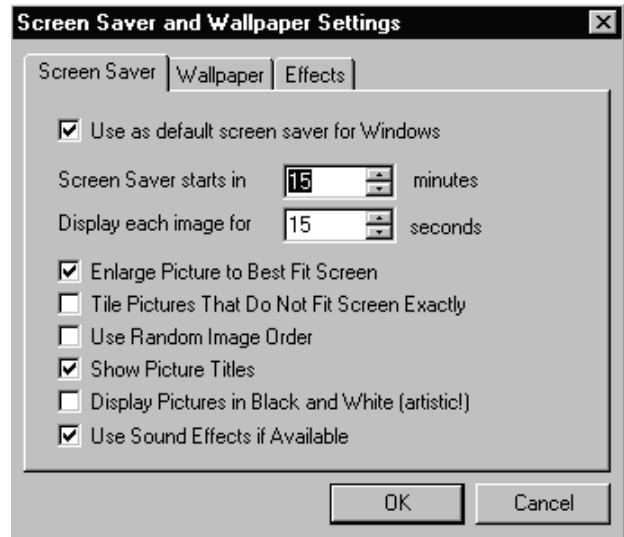
Screen Saver after install

Preview

The preview choice shows you the screen saver without needing to wait for the system to be idle.

Settings

This is the most important button. You will see the following "tabbed notebook:"



Settings

Screen Saver page

If you select **USE AS DEFAULT SCREEN SAVER**, the saver currently on the screen will become the saver activated when you are idle. You may select when the saver starts, and how long each image will be shown.

The other advanced settings on the Screen Saver page include:

Enlarge pictures to Best fit (recommended)

Tile pictures (not recommended)

Use random image order (matter of personal taste)

Show Picture tiles (strongly recommended)

Display pictures in black and white (strongly recommended)

Use sound effects (matter of personal taste)

Wallpaper page



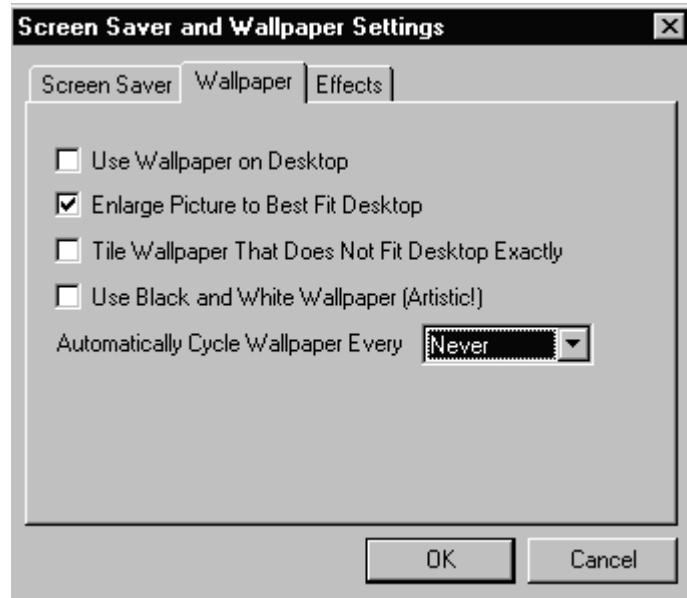
Wallpaper

Wallpaper are the images displayed on your desktop. You may switch between several different wallpaper tiles.

To use an image as wallpaper, highlight the image and then click on the Wallpaper button:



The program will automatically make this your wallpaper.



The other advanced settings on the
Wallpaper page include:

Use Wallpaper on Desktop (matter of personal taste)

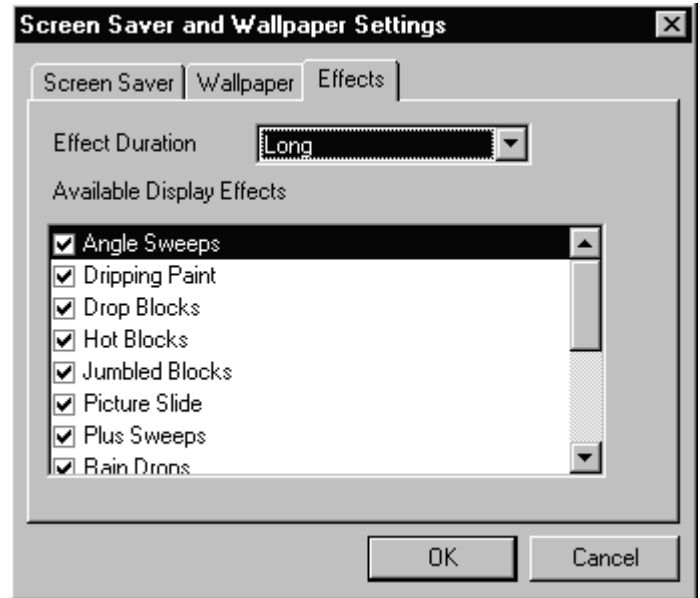
Tile Wallpaper (not recommended)

Display pictures in black and white (matter of personal taste)

Automatically cycle (matter of personal taste)

Effects page

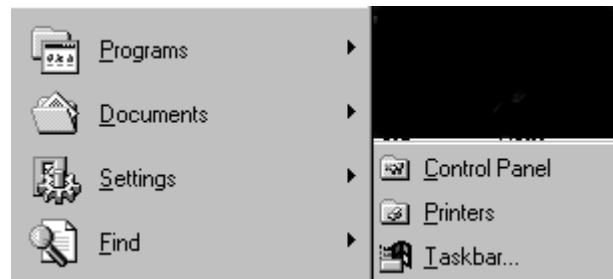
The effects page allows you to select which effects will be used between images.



Select these as you see fit.

Changing savers

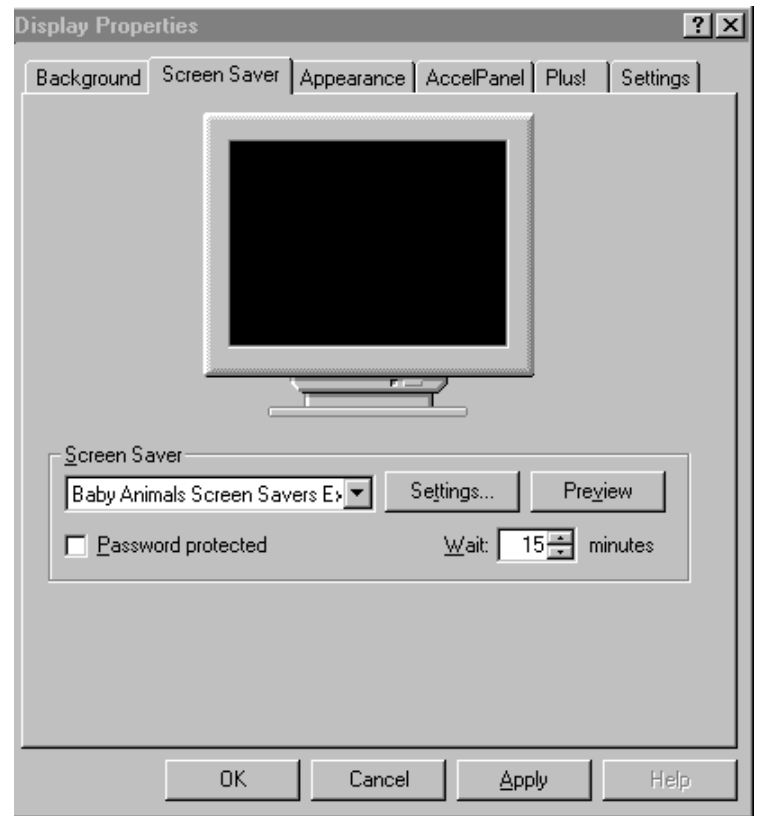
After you have installed a screen saver ONCE, you may select it or change to no saver, or to any other screen saver. This is done through the Windows Control Panel:



To reach the control panel, rest your cursor on Settings and then Control Panel.
Then select DISPLAY:



You may then manage your screen savers from the tab:



The settings which you used when you installed a saver are recognized by Windows. You may change the settings as you see fit.

For more information on the settings, please consult Windows help.

SPECIAL OFFER

\$180 value ... \$165.30 savings!

For a limited time, you can purchase all 25 of Starshine Software's programs, a \$187.25 value, *for just \$21.95*.

With this package, you'll own:

- over 700 fonts
- 7,000 clip art images
- 34 fun and exciting games
- 15 different productivity applications

Sound incredible? It's all there! Just look at all the programs you'll receive:

Productivity:

1000 Borders and Backgrounds
2750 Sound Effects
4000 Family Clip Art Collection
Awards, Banners and Certificates
Birthday Card Maker
Fonts Galore
Label Maker
Swift CAD
Swift Draw

Lifestyle:

Astrology & Lottery
Everything Baby
Personal Property Manager
Wills & Living Trusts
Your Money

Knowledge:

Complete Bible
Kid's Science Fair

Entertainment:

21 Greatest Windows 95/98 Games
Championship Bridge
Solitaire Suite
Ultimate Chess and Checkers
Video Poker
Video Blackjack

Utility:

Ultimate Screen Saver Collection
Zip & Backup Utility Suite
Web Page Creator

It's fast and easy! As the owner of a Starshine Software program, you already have what you need to get big software savings. The Starshine CD-ROM that you hold in your hands contains all of these programs, and you'll be able to install the programs *immediately*.

And to thank you for being a Starshine customer, if you order from our website you'll also be eligible to download the bestselling game *Runaway Train*, plus 300 additional clipart images, *for free*.

Just visit **www.starshinesoftware.com** to place your order, and in minutes you'll be installing these great Starshine Software programs.

Support

Voice, fax, Internet e mail

We encourage our users to provide comments and suggestions about this program.

This program is supported by voice, fax and Internet.

Starshine software's web site, www.starshinesoftware.com is your first and best resource for support. Available 24 hours daily, Starshine's web site contains detailed information on all Starshine products as well as technical support. You are almost certain to get the answer that you need by visiting our web site. There is no charge for support through our web site.

Internet

Support questions may be addressed to support@starshinesoftware.com. There is no charge for support via email.

Voice

Voice is available as follows (all times are in the Pacific time zone):

Monday through Thursday, 8:30am-12:00 noon and 1:00pm – 4:00 pm.

Friday, 8:30am-12 noon. You may call 310-886-1744 with your support questions.

VOICE SUPPORT IS SUBJECT TO A CHARGE OF \$5 PER INCIDENT THAT IS WAIVED FOR PROGRAM ERRORS.

Fax

You may fax us at 310-886-3517. There is no charge for support via fax.

ACKNOWLEDGMENTS

Programming: Science South, Inc.

COPYRIGHT

This program is © 1999 Cosmi Corporation.
All rights reserved.

YEAR 2000 READINESS STATEMENT

Our Y2K test and its results

TEST PROCEDURE FOR STARSHINE PROGRAMS
YEAR 2000 READINESS DISCLOSURE

Please read this information. It contains significant information on your legal rights and the license and warranty terms for this program as well as results of our Year 2000 simulation.

1. Starshine Software Corporation conducted a detailed test of this program on a machine that was operating Windows 95 properly, with NO other software on July 18, 1998. (The machines were manufactured by Gateway 2000). Definition: standard configuration: OEM setup of Windows 95 with minimum required drivers, and files installed by our program's install routine with no other files or programs.
2. The machine was connected to a printer and mouse, but no other peripheral devices.
3. The test consisted of installing the program properly in complete accordance with directions.
4. Operating the program and accessing all major functions, and all functions related to dates.
5. The program functioned nominally with the system date set to:
 - a. July 18, 1998
 - b. December 31, 1999
 - c. February 29, 2000
 - d. April 4, 2004
6. The following was **not** tested:
 - a. DDE/OLE with non year 2000 compliant programs
 - b. Operation with peripherals which are not year 2000 compliant
 - c. Operation of the program with other processes such as virus scanners loaded in memory.
 - d. Operation in any non-default system configuration such as insufficient GDI or operation on a system with Year 2000 compliance utilities.
 - e. Operation of the program in the year 2000 or beyond without proper installation.
 - f. Accordingly, if the program works properly before the year 2000 on your machine, the program itself will operate properly thereafter. However, we can provide no assurance of operation if your system has Year 2000 patches or is not in a properly configured condition.
7. Computer programs may experience bugs whether or not the year 2000 has arrived due to user error, such as deleting need files or libraries.

8. Catastrophic failure of a computer or operating system may cause all programs to cease to function.

This information is subject to change. Users addresses and contact information is being retained, and we will attempt to notify users of changes to this information.

LEGAL NOTICE:

The provision of this information does not alter the end user license and warranty terms for this program.

YEAR 2000 STATEMENT:

1. If any current shipping Starshine Software program is working correctly, then when the Year 2000 arrives our simulation testing shows that if all else is well, the program will continue to operate properly. IF A PROGRAM IS NOT SATISFACTORIALLY WORKING AT THIS TIME THE CHANGE OF CENTURIES WILL MOST LIKELY NOT CORRECT ANY PROBLEMS.
2. However, the program may still not work if the computer or any other hardware or other software makes year 2000 errors. It is possible for errors in the system to be reflected by a properly operating program.
3. If there are any infrastructure problems, such as interruption of electricity, the program will not work due to the lack of power.
4. If the program receives data from any other program or the operating system which is incorrect, it will probably not work correctly.
5. If you have created templates, forms or other output you should verify that the dates are acceptable to you.
6. Starshine programs are year 2000 capable.

If the assumption that the simulation represents actual operating conditions is incorrect, then your operation may be different.

WARRANTY

STARSHINE SOFTWARE makes no warranty of any kind, express or implied, including without limitation any warranties of merchantability and/or fitness for a particular purpose. STARSHINE SOFTWARE shall not be liable for any damages, whether direct, indirect, special or consequential arising from a failure

of this program to operate in the manner desired by the user. STARSHINE SOFTWARE shall not be liable for any damage to data or property that may be caused directly or indirectly by use of this program.

The disk on which this software is recorded will be replaced within 90 days of purchase if found to be defective in material or workmanship. This shall constitute the sole remedy of purchaser and the sole liability of STARSHINE SOFTWARE Corporation.

IN NO EVENT WILL STARSHINE SOFTWARE BE LIABLE FOR ANY DAMAGES, INCLUDING ANY LOST PROFITS, LOST SAVINGS OR OTHER INCIDENTAL OR CONSEQUENTIAL DAMAGES ARISING OUT OF YOUR USE OR INABILITY TO USE THE PROGRAM, OR FOR ANY CLAIM BY ANY OTHER PARTY.

The License Agreement and Warranty shall be construed, interpreted and governed by the laws of the state of California.

**SARSHINE
SOFTWARE**

2600 Homestead Place

**Rancho Dominguez, CA
90220**

voice (310) 886-3510

fax (310) 886-3517

**STARSHINE
SOFTWARE EUROPE**

8A Daimler Close

**Royal Oak Industrial
Estate**

**Daventry,
Northamptonshire NN11
5QJ, United Kingdom**

voice +44(0) 1327 879000

fax +44 (0) 1327 879888

E-mail: support@starshinesoftware.com

