

Fileman Launcher Index

Overview

[What is Fileman Launcher?](#)

[Installing Fileman Launcher](#)

[Removing Fileman Launcher](#)

[Using Fileman Launcher](#)

[Adding, Deleting and Changing Program Properties](#)

Commands

[Run Programs](#)

[Quit Programs](#)

What Is Fileman Launcher

Fileman Launcher is a utility that allows you to automatically run all your File Manager accessories along with File Manager. Fileman Launcher is installed when you install Drag And Zip or Drag And View. When you run File Manager, Drag And Zip or Drag And View will also be run. As long as File Manager is the top most program, Drag And Zip's and Drag And View's icon will not be covered up by any other programs. When you exit File Manager, all the programs that you ran with it will be exited automatically. Fileman Launcher installs an "FMLaunch" menu item in File Manager. With the FMLaunch menu you can add and delete programs to the programs that Fileman Launcher runs, change how the programs are run, quit all the programs, and rerun the programs. In addition to Drag And Zip and Drag And View, Fileman Launcher can run up to 8 programs with File Manager, and quit them when you quit File Manager.

Installing Fileman Launcher

Fileman Launcher is installed automatically when you install Drag And Zip or Drag And View. But if you need to install it manually, all you need to do is add a line to your WINFILE.INI file. The WINFILE.INI is in your Windows Directory. If your WINFILE.INI does not have a section called [addons], create it by entering the line "[addons]" at the end of the file. Under the "[addons]" line, add the following line:

"FMLaunchDLL=C:\DZ\FML.DLL"

However, instead of the path "C:\DZ\", enter the path where you have FML.DLL. It should be in the directory where you installed Drag And View or Drag And Zip.

That's all you need to do. The next time you run File Manager, Fileman Launcher will be run automatically.

Using Fileman Launcher

Once Fileman Launcher is installed you don't have to do anything. It will be run automatically every time you run File Manager. There will be a menu item called "FMLaunch" on File Manager's menu bar. From the FMLaunch menu you can add, delete and change the way Fileman Launcher runs programs.

Removing Fileman Launcher

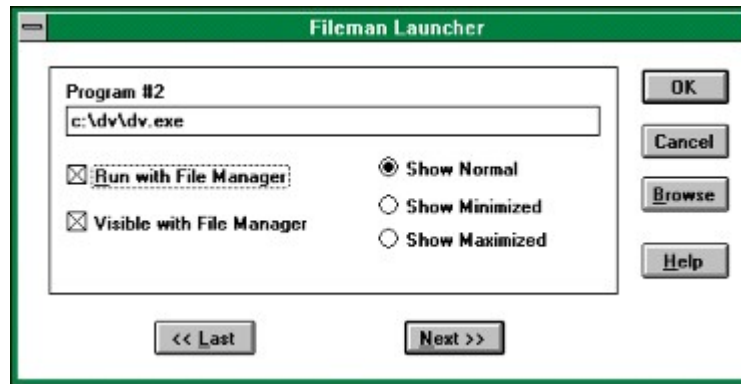
If you want to remove Fileman Launcher from File Manager, load the file WINFILE.INI into an ASCII editor like Windows Note Pad. You can find WINFILE.INI in your Windows directory. Look under the heading "[addons]". Under that heading you will find a line that says:

"FMLaunchDLL=C:\DZ\FML.DLL".

However, instead of the path "C:\DZ", it will have the path where you installed Drag And Zip or Drag And View. Just remove that line from WINFILE.INI, save it, and Fileman Launcher will no longer be run when you run File Manager.

Adding, Deleting and Changing Program Properties

You can easily add or delete programs from Fileman Launcher or modify how it runs the programs. Just choose the menu item "Modify Program List" from the FMLaunch menu in File Manager. A dialog box like this will pop up:



This dialog box shows the programs that you have installed in Fileman Launcher and the ways you want to run them. At the bottom of the dialog box are buttons that say "<< Last" and "Next >>"; these buttons allow you to scroll through the program list. You can install up to 10 programs into Fileman Launcher. The upper left of the dialog box will tell you which number program you are viewing. If you want to add a new program, just click on the "Next >>" button till you get to a blank entry. Under the program heading enter the name of the program that you want to run with the full path. If you are not sure where the program is, you can click on the browse button on the right hand side to help you find it.

Under the program name there are two check boxes. One says "Run with File Manager" and the other says "Visible with File Manager". "Run with File Manager" should be checked if you want the program to be run with File Manager. "Visible with File Manager" will allow you to always find this program when you want to use it with File Manager. When File Manager is on top of the other windows, so will be program. When another application has the focus, then your program will allow itself to be covered. As soon as you click on File Manager and give it the focus, then your program will appear also. If want this option to be active, see that "Visible with File Manager" is checked.

On the right hand side are three radio buttons that allow you to specify how you want the program to be run. You can run the program "Minimized"; that way it will be run as an icon. You can run the program "Normal"; that is like running the program from Program Manager. Or you can run the program "Maximized"; a maximized program will fill up the entire screen.

If you want to change any entry, just go to it and type your new specifications. Similarly, you can delete any entry by removing its name from the Program field.

Clicking on the OK button will save your changes automatically. Clicking on Cancel will discard your changes.

If you have made any changes to Fileman Launcher's program list, they won't become active immediately. You need to choose the menu item "Quit Programs" from the "FMLaunch" menu. That will close all the running Fileman Launcher programs. Then choose "Run Programs" from the "FMLaunch" menu. That will rerun the programs according to the changes that you've made.

Run Programs

Choose this menu option from the "FMLaunch" menu to run the programs installed in Fileman Launcher. This menu item will only be available if the programs aren't running.

Quit Programs

Choose this menu option from the "FMLaunch" menu to close all the Fileman Launcher programs that are currently running.

