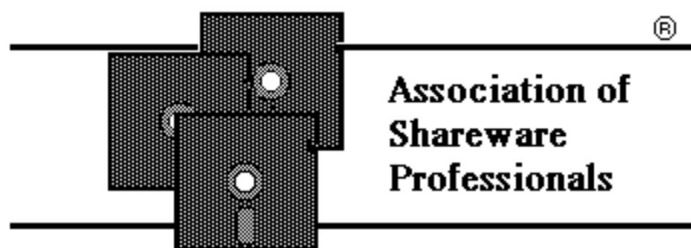


TransferTIME for Windows

Version 3.0 - Release Date 01/15/1994

Shareware (Evaluation) Version User Documentation

This program, the accompanying documentation, and all associated files are
Copyright © 1994 by RGH Software. All Rights Reserved.



Association of Shareware Professionals
Author Member

Windows™ is a trademark of, and copyrighted by, Microsoft Inc.

Table of Contents:

CHAPTER ONE	About TransferTIME in General
CHAPTER TWO	Using TransferTIME Using the Windows™ File, Directory and Drive lists Using the "File(s) to Estimate" Box for Multiple Files or for File Sizes
CHAPTER THREE	Customizing TransferTIME and the TTIME.INI File
CHAPTER FOUR	Registering TransferTIME

IMPORTANT NOTE: This software requires the presence of the Visual Basic run-time module (VBRUN200.DLL), which may not have been supplied with the evaluation copy of the software. Most BBSes and disk vendors have asked that the run-time module be left out of the evaluation version in order to prevent needless duplicates of the file. If the run-time module is not present, and you cannot find it anywhere else, you can contact RGH Software for help in obtaining a copy.

CHAPTER ONE: About TransferTIME in general...

TransferTIME is a telecommunications utility for the following systems:

- Any computer system capable of running Microsoft Windows™ Version 3.0 or 3.1 with at least two megabytes of RAM installed.
- Compatible with Windows™ running in either Standard or Enhanced Modes.

TransferTIME estimates the needed time to transfer a file from one computer to another, supporting a wide range of modem speeds and a number of the most popular file transfer protocols. If you're not sure what a file transfer protocol is, check the IBM New User's forum on CompuServe. They have some nice descriptions on the various file transfer protocols available.

In addition to estimating the required time, TransferTIME can be configured to estimate how much a file transfer will COST you (be it telephone long-distance charges, connect fees, surcharges, or any combination of the above) as well.

TransferTIME is designed to be easy to use and actually requires very little learning on your part. If you're one of those people who hates reading software manuals, go ahead and quit reading now.

Simply select the TransferTIME icon from the TransferTIME Program Group (as installed, TransferTIME will create its own program group and icons) and you're all set! TransferTIME will open its program window, and you can either click the **"Help"** button or press F1 for help.

If, however, you want to learn how to make TransferTIME do all it can for you, keep reading. I promise by the time you're done with this manual, you'll fully understand how to make it work for you, and how you can customize the many features of TransferTIME to serve YOU best!

WHAT TransferTIME CAN DO FOR YOU:

Using the default configuration file (TTIME.INI), TransferTIME gives its "best guess" estimates for file transfers using the XModem, YModem-G, CompuServe B+, and ZModem file transfer protocols. It comes set with default modem speeds of 2400, 9600 and 14400 bits per second (bps, sometimes erroneously referred to as "baud"), estimating both the time and the cost of the file transfer.

By default, TransferTIME bases its costs on the last-known CompuServe network charges with no added long distance or network access fees.

By customizing the default values contained in the configuration file (TTIME.INI), you can adjust the performance of TTIME to more closely match your own experiences. Full details are contained in CHAPTER THREE - CUSTOMIZING TransferTIME.

WHAT TransferTIME CANNOT DO FOR YOU:

It won't actually send or receive programs over your modem. That's what your terminal software is for.

It won't be able to predict EXACTLY how long a file transfer will take. TransferTIME assumes a good phone connection, and bases its estimates on a file being transferred at a normal rate of efficiency (no

retries or errors caused by noisy phone lines). However, the "best guess" figures used are based on three years' experiences by our beta testers and registered customers, so TransferTIME should come pretty close!

It won't always be able to accurately predict file transfers where both modems are using advanced error correction and data compression or proprietary (private) modem-to-modem protocols, since the compression varies widely depending on the type of data being transmitted.

However, with some experience, you'll be able to overcome many of these shortcomings by making adjustments in the configuration file (TTIME.INI) to more closely reflect your "real-world" modem experiences.

CHAPTER TWO: Using TransferTIME

How you'll use TransferTIME to estimate file transfer times and costs depends on whether the file you want an estimate for is one you're uploading (that is, the file is already on your system and you want to send a copy to someone else's computer) or downloading (that is, the file is on another system and you're copying it to your computer).

For files that are already on your system, you can use one of two methods to obtain a transfer time/cost estimate:

First, you can use the **DRIVE**, **DIRECTORY** and **FILE LISTS** to select a file to obtain a transfer time/cost estimate for. Use the **DRIVE** box to list available drives, and select the drive the desired file is on, then use the **DIRECTORY** list to list available directories on that drive, and select the directory that the desired file is in. Finally, use the **FILE** list to select the desired file, then click the "Estimate" button.

(Anyone familiar with other Microsoft Windows™ applications will be very comfortable with using these controls. You can either start up the TransferTIME program to see them, or refer to **Figure One** at the end of this chapter.)

Second, you can use the "File(s) to Estimate" box and type in the file name there. When TransferTIME starts up, the cursor is already located in that box. If you've clicked on any of the other controls on the screen, or have used the TAB key, then the cursor may not be in the box. If not, you can either click the mouse pointer within the box to instantly move the cursor there, or use the TAB or Shift-TAB keys until the cursor appears in the box.

If you use this method, you must tell TransferTIME the full path where the file can be located. For example, if you want an estimate for the file STUFF.WRI, located in your WINDOWS directory and on your D: drive, you'd type in:

D:\WINDOWS\STUFF.WRI

then click the "Estimate" button.

For files that will be sent to your system, you must enter the file's size, in bytes. Since TransferTIME cannot find the file on your system (because it isn't there yet!), you will need to tell TransferTIME how large the file is.

For example, let's suppose that you've called up a BBS (Bulletin Board System) and see the following list of files:

```
*****
* IBM UTILITIES
*****
ONEPROG.ZIP      225,000      One program you can download from this BBS
TWOPROG.ZIP     115,000      Another program available here
BIGPROG.ARC     500,250      A really big program!
```

and you decide to download the file TWOPROG.ZIP and want to know how long it will take. The file size is 115,000 bytes (according to the listing), so you'd make sure the cursor is located in the "File(s) to Estimate" box and type in:

115000

then click the "Estimate" button. Note that no commas are used - only the numbers are entered! TransferTIME will then estimate the file's transfer time and cost.

The advantage to using the "File(s) to Estimate" box is that you can then give TransferTIME a list of many file names and/or file sizes to estimate for. If you use this feature, TransferTIME will display the estimate for the **first** file being estimated. At that point, the "Estimate" button will change to a button labeled "Next !" (in blue lettering, to help it stand out) which you must then click to view further estimates.

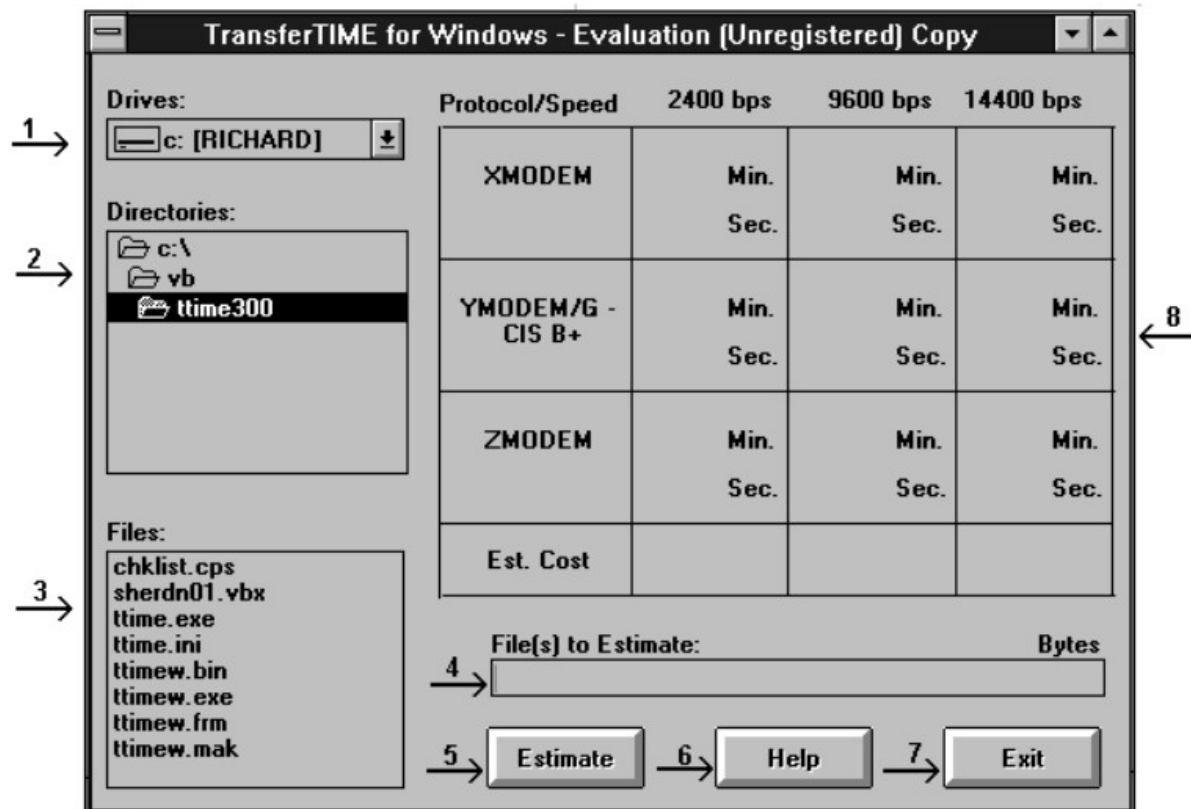
To enter multiple files to estimate, simply type in the name or size of each file, separating each one by a single space. You may mix file names and file sizes as you like. For example, you could ask TransferTIME to estimate the following list:

C:\WINDOWS\SYSTEM\VBRUN200.DLL 125004 C:\WINDOWS\WINHELP.EXE

and each file estimate would be displayed, one at a time, with the program waiting for you to click on the "Next !" button before displaying the next file. In this case (assuming, of course, that the VBRUN200.DLL and WINHELP.EXE files are in the places the example shows them to be!) you would first see the estimate for the VBRUN200.DLL file, then (after clicking the "Next !" button) the estimate for a file that is 125,004 bytes large, and finally (after another click on the "Next !" button) the estimate for the WINHELP.EXE file.

Should TransferTIME be unable to find a file that you've requested an estimate for by name, it will display a message box telling you so.

FIGURE ONE - Elements of the TransferTIME Program Window:



- 1 **DRIVE LIST** - lists available disk drives.
- 2 **DIRECTORY LIST** - lists available directories on the selected drive .
- 3 **FILE LIST** - lists available files in the selected directory on the selected drive.
- 4 **"File(s) to Estimate"** - can show either the file selected by using the **DRIVE**, **DIRECTORY** and **FILE** lists above, or may be used to type in file names and/or sizes from the keyboard. The size of the file (in bytes) is displayed to the right end and just above this box.
- 5 **"Estimate"** - starts the estimate process. If more than one file is entered into the **"File(s) to Estimate"** box, this button will change to a **"Next !"** button to indicate that there are more file estimates waiting to be viewed. The estimate being displayed will not change until the user clicks the **"Next !"** button.
- 6 **"Help"** - this button (or the F1 key) will run the TransferTIME Help system.
- 7 **"Exit"** - this button (or the Alt-F4 key) will exit TransferTIME.
- 8 The display area shows the various estimate and cost information for the currently selected file. Modem speeds are listed at the top of this area, file transfer protocols are listed to the left of this area.

CHAPTER THREE: Customizing TransferTIME (Using the TTIME.INI settings)

TransferTIME stores much useful information in a file named TTIME.INI that you can edit using any text editor. It comes pre-configured with a "default" setup that should work on most systems. The default TTIME.INI file is shown below:

```
[TransferTIME 3.0]
ForeColor = 6
BackColor = 0
RegKey1 =
RegKey2 = 00000000

[Protocols]
Prot1Name = XModem
Prot2Name = CIS B+/YModem-G
Prot3Name = ZModem
Prot1Effic = 0.900
Prot2Effic = 0.929
Prot3Effic = 0.958

[Speeds]
Speed1 = 2400
Speed2 = 9600
Speed3 = 14400

[Costs]
Cost1 = 0.213
Cost2 = 0.380
Cost3 = 0.380
```

For ease of understanding, the information in the file is separated into sections, and each section has a title that describes the information contained in that section. Let's take a look at each section to see how you might want to modify the default settings.

The first section, labeled [TransferTIME 3.0] contains information on whether or not this copy is registered (paid for), and what screen colors the DOS version of TransferTIME should use:

```
[TransferTIME 3.0]
ForeColor = 6
BackColor = 0
RegKey1 =
RegKey2 = 00000000
```

The first two lines contain the DOS foreground/background color attributes, and changing them (or omitting them completely) will have no effect on the operation of TransferTIME for Windows.

The next two lines (RegKey1 and RegKey2) contain information about this copy of TransferTIME, and your serial number. You should NOT alter the information contained in these two lines.

The next section, labeled [Protocols], contains information about the file transfer protocols TransferTIME will use:

```
[Protocols]
Prot1Name = XModem
Prot2Name = CIS B+/YModem-G
Prot3Name = ZModem
Prot1Effic = 0.900
Prot2Effic = 0.929
Prot3Effic = 0.958
```

The first three lines contain the names of the file transfer protocols, and the next three lines contain the efficiency rating for those file transfer protocols. These efficiency ratings are based on input and experience over three years by myself and a large number of users, and shouldn't be changed UNLESS you're changing the protocol as well.

If you want to use a "new" file transfer protocol with TransferTIME, the first thing you need to do is to transfer several files using the "new" transfer protocol. For the most accurate results, do so with ERROR CORRECTION and FILE COMPRESSION TURNED OFF (if your modem supports these features - refer to your modem user's manual for details on whether or not it does and how to turn these features off).

WARNING - if you don't turn error correction and file compression off, then the results of your tests will be inaccurate and TransferTIME will be unable to give you reasonable estimates!

Pick three files to transfer. One should be a fairly small file (perhaps 10,000 bytes or so), one should be a medium-sized file (perhaps 40,000 to 50,000 bytes) and one should be a good-sized file (of perhaps 100,000 bytes or more). Write down the exact size of the file, and how long (in minutes and seconds) it took to transfer each file.

When you're done, add up the total file sizes and the total time it took to transfer the three files. Convert the total time into seconds, and divide the total file sizes by the total seconds. This figure is the number of characters per second transferred - keep it handy, because we're almost done.

Take the modem speed used to transfer the files, and divide it by ten to give you the speed of the modem in characters per second. Finally, take the characters per second transferred and divide that number by the modem's speed in characters per second, and you've got your efficiency rating.

An example will probably help make it clearer. Let's assume you want to replace the first protocol (XModem) with a new protocol you're using, called FastFile. You are using a 9600 bps modem, and have turned your error correction and data compression off.

You transfer three files - one is 35,000 bytes, one is 65,000 bytes and one is 110,000 bytes. It took 38 seconds for the first, 68 seconds for the second, and 117 seconds for the third file.

Adding the three file sizes (35,000 + 65,000 + 110,000) gives you a total of 200,000 bytes. Adding the three times (38 + 68 + 117) gives you a total time of 223 seconds.

Dividing the 200,000 bytes by 223 seconds gives you a character per second speed of 896.86 characters per second. Your modem speed was 9600 bps, so it's transmitting 960 characters per second.

You divide 896.86 (the file characters per second) by 960 (the modem characters per second) and wind up with an efficiency rating of 0.934 for the FastFile protocol.

So, finally, you'd change the first protocol line to read:

Prot1Name = FastFile

and the first efficiency rating line to read:

Prot1Effic = 0.934

and from now on, TransferTIME will include information on your new file transfer protocol each time you use it!

The next section, labeled [Speeds], simply records the modem speeds (in bits per second) that you want TransferTIME to make estimates for. The default settings are as listed below:

[Speeds]
Speed1 = 2400
Speed2 = 9600
Speed3 = 14400

You may wish to change these to reflect different speeds that your modem supports, or to reflect the results of data compression that your modem may offer.

For example, let's assume that you've found that your 14400 bps modem generally can use data compression to get an actual character per second speed of 1600 characters per second. You'd calculate this the same way you calculated the file characters per second above, or if you're lucky, your terminal program will tell you this.

You might then want to change the third modem speed (14400) to reflect your "real-life" experience. To do this, simply multiply the speed above (in our example, 1600) by ten (making 16000) and edit the desired line (we're changing the 14400 line) to show the new speed:

Speed3 = 16000

Another example - suppose that your modem only supports a maximum speed of 9600 bps, and you want to have TransferTIME show estimates for 1200 bps, 2400 bps and 9600 bps. You'd change the three lines as shown below:

Speed1 = 1200
Speed2 = 2400
Speed3 = 9600

to give these estimates.

The final section, titled [Costs], is where TransferTIME stores the cost PER MINUTE to calculate its cost information. You should note that the cost estimate is based on THE SECOND PROTOCOL IN YOUR LIST, so you should change that protocol (if needed) to give the most accurate estimate. The default settings are as follows:

[Costs]

Cost1 = 0.213

Cost2 = 0.380

Cost3 = 0.380

These costs reflect the current costs for CompuServe access using normal CompuServe access numbers. The figure for Cost1 represents what you pay for access at the first listed modem speed, the figure for Cost2 represents what you pay for access at the second listed modem speed, and the figure for Cost3 represents what you pay for access at the third listed modem speed.

They may be easily changed to reflect the actual costs you pay for calls as follows:

First, take any per-hour charges and divide by 60 to get the per-minute cost. If you have long distance charges, contact your phone company representative to ask them the per-minute charge for the call, and add this cost to the per-minute connection fee.

As an example, let's assume you call the BIG BBS and pay them a fee of \$5 per hour for 2400 bps access, or \$8 per hour for 9600 bps or 14400 bps access. The phone company informs you that it costs you twelve cents per minute to call BIG BBS.

So, your 2400 bps cost is .083 (\$5 divided by 60 minutes) plus .12 (long distance), or .203 dollars per minute. Your 9600 bps and 14400 bps cost is .133 (\$8 divided by 60 minutes) plus .12 (long distance), or .253 dollars per minute. You'd then change the cost section to read as follows:

Cost1 = 0.203

Cost2 = 0.253

Cost3 = 0.253

The three decimal places used above are generally accurate enough to give a good estimate of the cost.

CHAPTER FOUR: Registering TransferTIME

TransferTIME is not free software. TransferTIME is a Shareware product , and you are required to pay a registration fee of \$30 if you find that you're still using TTIME after a reasonable evaluation period (30 days).

Why should you pay? Well:

- 1) Payment is required by law if you are going to keep using it.
- 2) I've put many hundreds of hours into developing, testing and improving the TransferTIME package from its humble beginnings to the product you see now. Payment for my labor is only fair.
- 3) A software package purchased in a store requires that you make payment up front, BEFORE you even know that the soft ware will work the way you want it. With Shareware, you get a trial in your everyday computing environment first, before paying for the software.
- 4) Shareware depends on your honesty. If no one registers a shareware program, then the author will likely discontinue improving and supporting that program. It's up to you and your registrations to keep TransferTIME (and other shareware programs) healthy and growing.

Registered Users, in exchange for their \$30 registration fee, will receive:

- 1) My most heartfelt gratitude, and the undying appreciation of my wife (who's put up with me in front of the keyboard as late as 4:30am working on this release!)
- 2) The latest version of TransferTIME, with your registration number permanently emblazoned on it (so all who see it may envy you). Registration now gets you BOTH the DOS and Microsoft Windows™ versions of TransferTIME.

Registered users will also get a utility program that makes changing the TTIME.INI file quick and easy instead of using a text editor to make desired changes.

- 3) FREE UPDATES! All Registered Users will receive the next major release and/or bug fix version free of charge. This means, if I release a new version followed by a bug fix version (or vice versa), you'll receive two free update disks at no additional charge! Registered Users will be notified via mail of updates after the expiration of their free update period, and can purchase updated versions at a significant discount.
- 4) FREE COMPUSERVE TIME! By special arrangement with CompuServe, ASP authors are allowed to offer to registered users an offer for a FREE CompuServe IntroPak, with your very own CompuServe ID number, password, and \$15 in FREE CONNECT TIME that you can use to explore the CompuServe network (or, for that matter, to visit the ASP Forum for help, hints, support and other great ASP member product information).

Furthermore, Registered Users can obtain preferential support of TransferTIME through several sources:

- on CompuServe, by addressing CompuServe Mail to me at my User ID (76670,110);
- By U.S. Mail, at the address shown on the registration form;
- Via fax or voice (**only** to registered users)

ASP Ombudsman Information

RGH Software is a member of the Association of Shareware Professionals (ASP). ASP wants to make sure that the shareware principle works for you. If you are unable to resolve a shareware-related problem with an ASP member by contacting the member directly, ASP may be able to help.

The ASP Ombudsman can help you resolve a dispute or problem with an ASP member, but does not provide technical support for members' products. Please write to the ASP Ombudsman at:

**ASP Ombudsman
545 Grover Road
Muskegon, MI
49442-9427 (USA)**

or send a CompuServe message via CompuServe mail to 70475,1071, or a FAX to 616-788-2765.

REGISTRATION FORM - TransferTIME 3.0

I hereby agree that I have read all the documentation files included in the TTIME package, and hereby agree to abide by all rules and rights reserved to RGH Software. Payment in U.S. Funds is enclosed for the following option(s):

_____ \$30.00 check or money order for full registration, including the latest version on 3.5" diskette, the CompuServe IntroPak, and one free upgrade/bug fix version

_____ Please send a 5.25" diskette instead of a 3.5" diskette

_____ No payment enclosed. I no longer intend to use TTIME for the reason(s) listed below.
(If you aren't registering, and have a specific reason why not, PLEASE let me know!)

_____ For User registrations outside the U.S. and Canada, please add \$5.00 for foreign shipping and handling charges

Total Enclosed: _____

Your Name: _____

Address: _____

Telephone Number (OPTIONAL!): _____

-or- CompuServe User ID (if you have one and would prefer CMAIL contact)

Where did you get your copy of TTIME (BBS Name, Vendor's Name, etc):

Additional comments, suggestions, and so on:

Please complete the above, enclose appropriate payment,
and mail to:

RGH Software
Route 1, Box 24
Reed City, MI 49677-9801