

WinCIM Time (Version 1.0)

Description

WCIMTIME 'Options' Menu Items:

- Always on Top**
- Show in WinCIM® Menu**
- Select Time Display Format**
- Time Runs When Using**
- Change WinCIMPath...**
- Reset 'Total Connect Time'...**
- Start WinCIM®**
- Exit**

CompuServe® WinCIM is a registered service mark of CompuServe Incorporated

Select when timer will count (during Basic &
Extended Services, or Extended Services Only)

Select the format to display your total connect time ('Total Connect Time' or 'Total/Current' times).

Checking this menu item causes WCIMTIME
to always stay on top of all other windows.

Checking this menu item causes the
'Total Connect Time' or 'Total/Current' times to
appear in the WinCIM® menu bar.

Selecting this menu item prompts
the user for a new path where WinCIM®
(WINCIM.EXE) can be found.
Example: C:\CSERVE\WINCIM

Manually reset the 'Total Connect Time'
counter back to 0:00:00.

Starts WinCIM® (WINCIM.EXE),
using the 'WinCIMPath' found in
the WCIMTIME.INI profile file.

Exit WCIMTIME and stop calculating
the 'Total Connect Time'.

WCIMTIME.EXE (Version 1.0) calculates and displays the 'Total Connect Time' or 'Total/Current' times while using CompuServe® WinCIM for Windows (WINCIM.EXE).

What is WCIMTIME?

WCIMTIME keeps a running total of your total connect time while using CompuServe® WinCIM. It monitors WinCIM® and calculates the **'Total Connect Time'** or **'Total/Current'** times based on what it sees. If the appropriate menu item in WCIMTIME is selected, the **'Total Connect Time'** or **'Total/Current'** times (default) will magically appear in the WinCIM® menu bar. You can even select which services to time (**Basic & Extended**, or **Extended Services Only**).

Why do I need it?

Why do you need such a program? Well if you're like a lot of other users, you probably get a little frustrated and tired going through all those menu items in the **"GO BILLING"** section to figure out your total connect time. There had to be a better way. So I sat down and wrote this program to calculate and track the total connect time without all those GUI menu gymnastics.

Is it hard to use?

WCIMTIME is totally transparent to the operation of WinCIM®. Just copy the appropriate files to their directories, and start the program. If you want to select some options, do so from the WCIMTIME **'Options'** menu. WCIMTIME does not affect the operation of WinCIM®, and may be terminated at any time during your session.

How does it calculate 'Total Connect Time'?

The **'Total Connect Time'** is calculated as the time you are actually connected to the CompuServe® service. Please note, the term **'Total Connect Time'** is a relative term and means the time between manual resets of the counter. This software is meant to help monitor your total time and should not be used to calculate your actual costs. The program still requires manual user intervention in order to reset the **'Total Connect Time'** counter. **'Current Time'** is the time of each connection. **'Current Time'** automatically resets before each session. (Current session time accuracy ± 5 seconds.)

The **'Total Connect Time'** is saved in the **WCIMTIME.INI** profile file every minute and after WCIMTIME is terminated, so that it can be recalled when WCIMTIME is started again. In the event of a system reset (i.e. **CTRL-ALT-DEL**), WCIMTIME will have updated the **WCIMTIME.INI** profile file, in one minute intervals, with the **'Total Connect Time'**. The time will be accurate to one minute in case of an unexpected system shutdown. The **'Current Time'** automatically resets before each connection, and therefore is not saved.

What else can I do with it?

WCIMTIME normally runs as an icon, and need only be maximized in order to select menu items. Once started, WCIMTIME may remain running even after WinCIM® has terminated. You may substitute this application for the WinCIM® application in the appropriate Program Manager group, as WCIMTIME will automatically start WinCIM® using the **'WinCIMPath'** path found in the **WCIMTIME.INI** profile file. The

'Total Connect Time' must be manually reset using the 'Reset 'Total Connect Time'...' menu item in the WCIMTIME 'Options' menu.

Items in the WCIMTIME 'Options' menu include, 'Always on Top', 'Show in WinCIM® Menu' 'Select Time Display Format', 'Time Runs When Using', 'Change WinCIMPath...', 'Reset 'Total Connect Time'...', 'Start WinCIM®', and 'Exit'.

What is the WCIMTIME.INI profile file?

WCIMTIME.INI contains the user-configurable parameters needed by **WCIMTIME.EXE**. Most will default to an initial value. **WCIMTIME.INI** must be located in the Windows directory. (The Windows directory must be in your DOS 'PATH' statement).

The '**WinCIMPath**' parameter is used to automatically start WinCIM® when WCIMTIME is started. Normally this parameter need not be set, if **WCIMTIME.EXE** is located in the same directory as **WINCIM.EXE**. To set it, select the '**Change WinCIMPath...**' item from the WCIMTIME '**Options**' menu. In addition, any ASCII text editor (i.e. **NOTEPAD.EXE**) may be used to edit the .INI file directly.

How do I install WCIMTIME on my system?

Copy **WCIMTIME.EXE** and **WCIMTIME.HLP** files to the WinCIM® directory (probably **C:\CSERVE\WINCIM**). **WCIMTIME.HLP** must be in the same directory as **WCIMTIME.EXE**. Copy the **WCIMTIME.INI** file to the Windows directory (this is optional, since WCIMTIME will create a default **WCIMTIME.INI** file if one is not found).

The Windows directory must be in your DOS 'PATH' statement. If the profile file is not found when WCIMTIME is started, one will automatically be created as a default. You may edit it later (while WCIMTIME is NOT running) to configure it to your particular configuration.

Files:

WCIMTIME.EXE - Total Connect Time Utility used with CompuServe® WinCIM (**WINCIM.EXE**).

WCIMTIME.HLP - WCIMTIME Help file.

WCIMTIME.INI - Profile file containing the '**WinCIMPath**' path string, etc.

Most Commonly Asked Questions!

How do I reset the 'Total Connect Time' counter?

To reset the "Total Connect Time" counter....

- 1) Minimize **WINCIM.EXE** to an icon on the desktop.
 - 2) Look at the desktop for an icon called "**WinCIM Time**".
 - 3) Double click on "**WinCIM Time**" icon and it will open up.
 - 4) You will see an application with two menu items, "**Options**" and "**Help**".
 - 5) In the "**Options**" menu, click on the "**Reset 'Total Connect Time'...**" item.
 - 6) Press '**YES**' when asked "**Reset 'Total Connect Time' Now?**".
- The counter is now reset.

Why doesn't the counter start counting?

Here are some suggestions:

- 1) Are both WCIMTIME and **WINCIM.EXE** running? (both required for WCIMTIME to work).
- 2) Did **WINCIM.EXE** actually connect to CompuServe® via the modem? Time only runs if the modem connection to the CompuServe® service has been established.

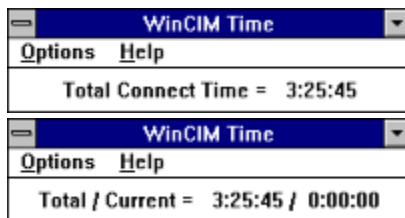
- 3) Have you selected the correct service to time (**Basic & Extended** Services is the default). Select the "**Time Runs When Using**" item in the WCIMTIME menu.
- 4) If you require more help, use '**Help**' found in the WCIMTIME menu.

Where is the 'Options' menu item?

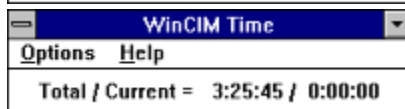
The '**Options**' menu is located in the WCIMTIME application (**WCIMTIME.EXE**), **NOT** the WinCIM® application (**WINCIM.EXE**). WCIMTIME normally runs **MINIMIZED** on the desktop. To see the WCIMTIME menu, go to the desktop and double-click on the icon called "**WinCIM Time**". WCIMTIME will open up and the '**Option**' and '**Help**' menu items will be visible. Don't bother looking on the **WINCIM.EXE** menu bar for an '**Options**' item, it's not there.

Time Display Formats:

Total Connect Time only



Total Connect Time and Current (session) Time



Disclaimer

This software is provided "**as is**" for the pleasure and benefit of the users of CompuServe® WinCIM. There is no charge for the use of this program, but we do encourage your comments and suggestions (select '**About WCIMTIME...**' in the WCIMTIME '**Help**' menu). We assume no responsibility for any damage to your equipment or loss of data as the result of using this software (You Have Been Warned!). **Enjoy, its FREE.**

