

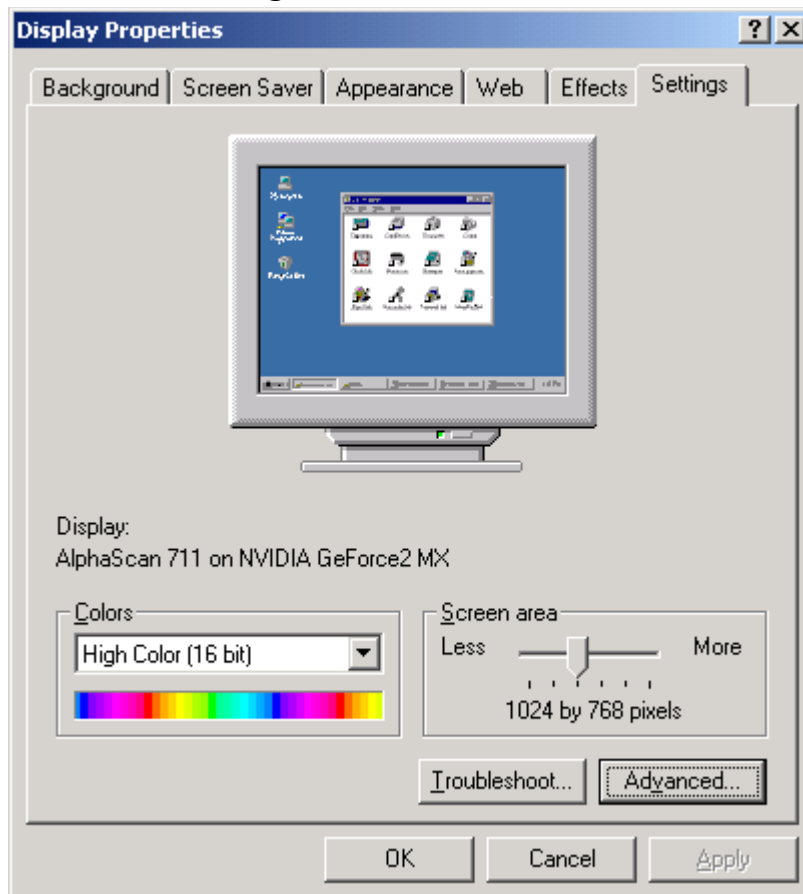
Twin View Setting Guide

A. EQUIPMENT

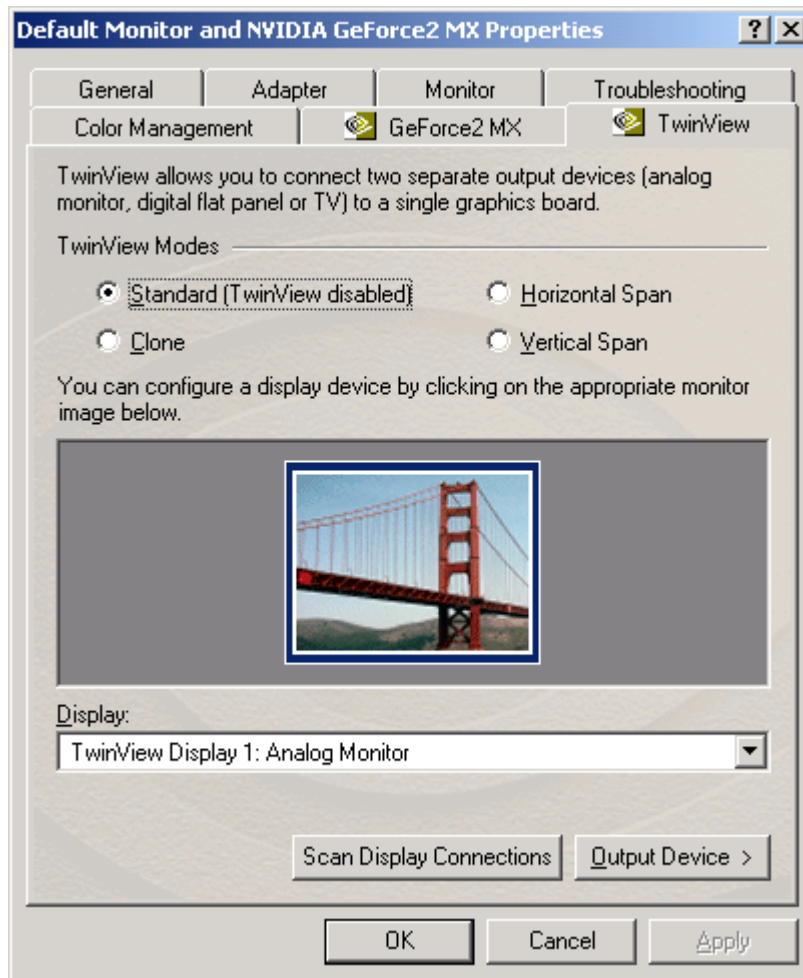
1. System: Windows 2000
2. Model: SP6800/32M P38
3. BIOS: 3.11.00.18
4. Driver: V7.xx or later
5. Two monitor

B. SETUP

1. Right click mouse button on desktop, select **properties**
2. select **settings** and then click **advanced...**

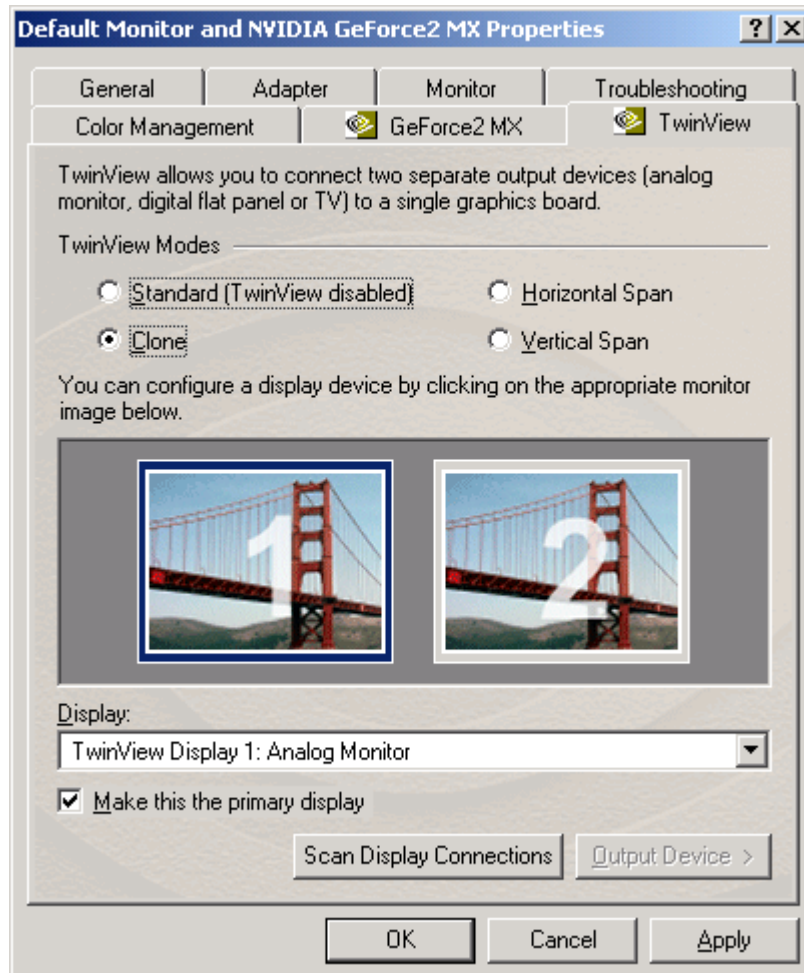


3. select “**TwinView**”

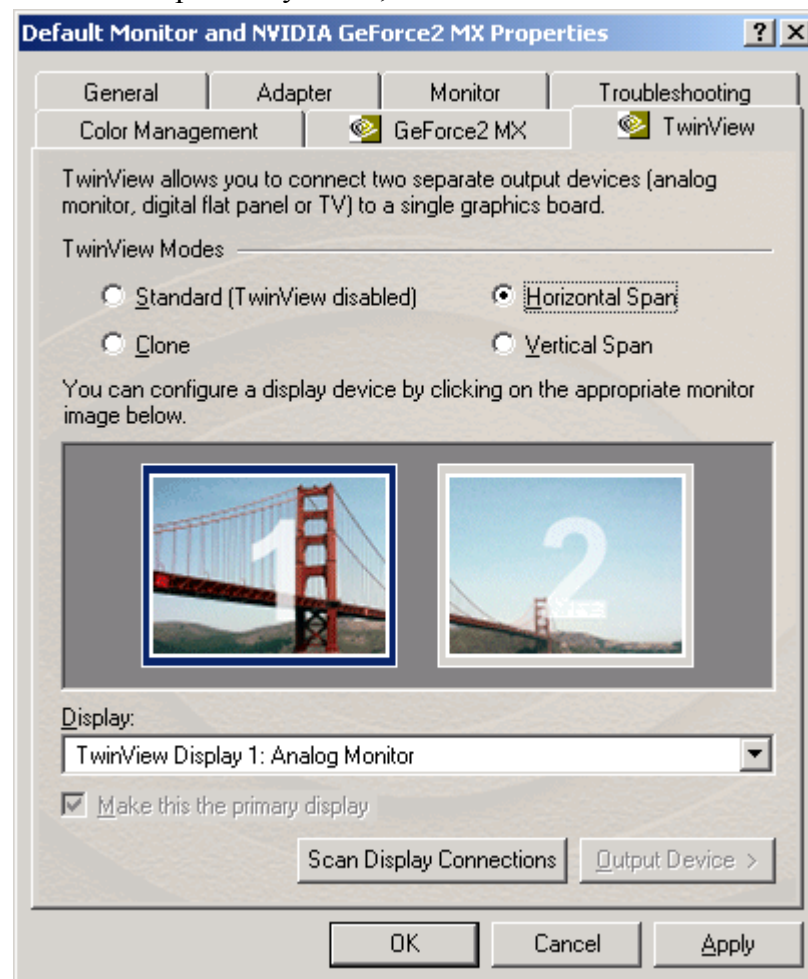


4. You can chose “ **Clone** or **Horizontal Span** or **Vertical Span**”,
and then click “ **Apply**”

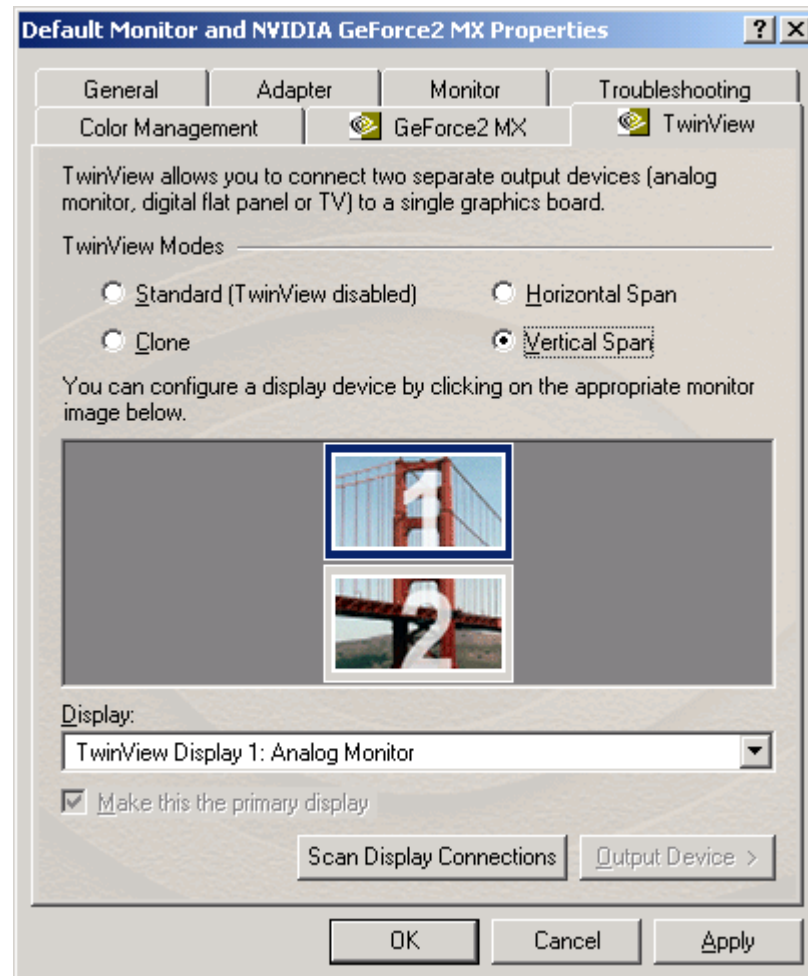
Clone mode: as you see is a copy screen.



Horizontal Span: As you see, the screen can extend Horizontal.



Vertical Span: As you see, the screen can extend Vertical.



Trademark Acknowledgments

All brand names and trademarks are the property of their owners.