

Twin View Setting Guide

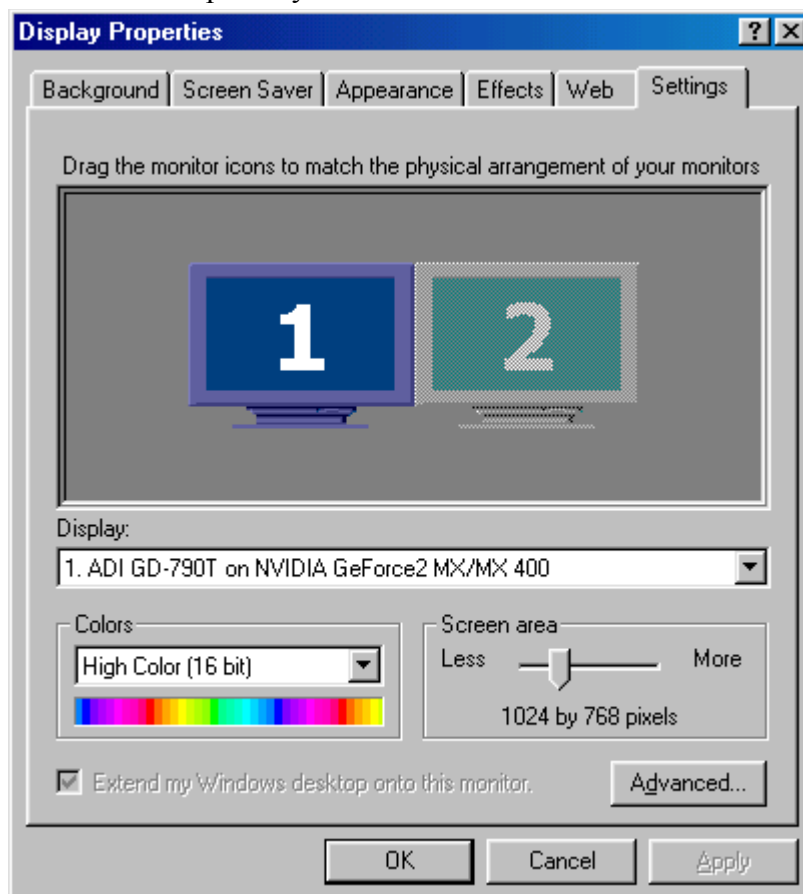
A. EQUIPMENT

1. System: Windows 98se
2. Model: SP6800/32M P38
3. BIOS: 3.11.00.18
4. Driver: V7.xx or later
5. Two monitor

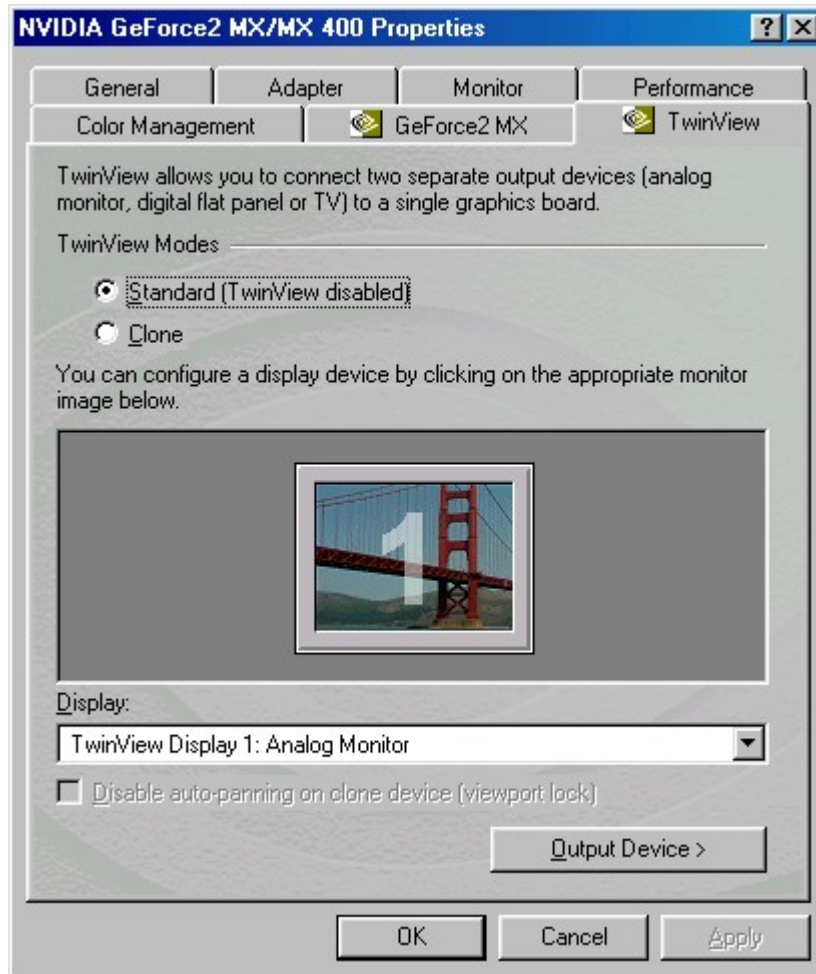
B. HOW TO USE TWINVIEW

1. CLONE MODE

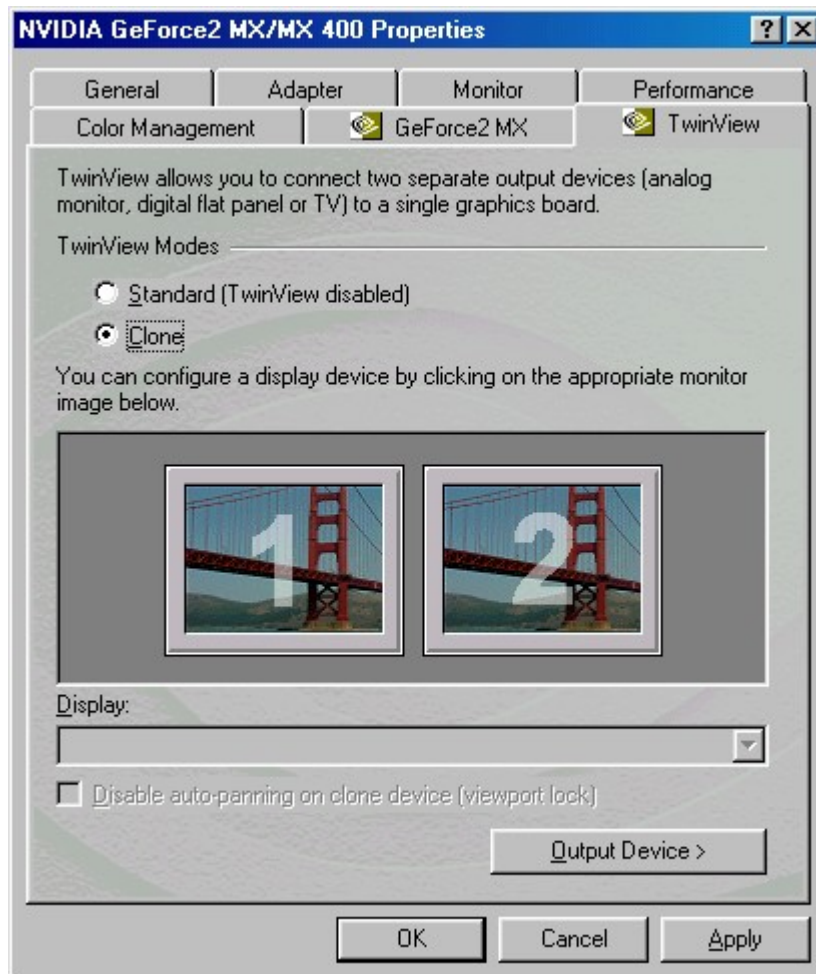
- 1.1 Right click mouse button on desktop, select **properties**.
- 1.2 Select **settings**.
- 1.3 Select primary monitor and click **advanced**.



- 1.4 Select **TwinView**.



1.5 Then select **Clone** and click **Apply**.

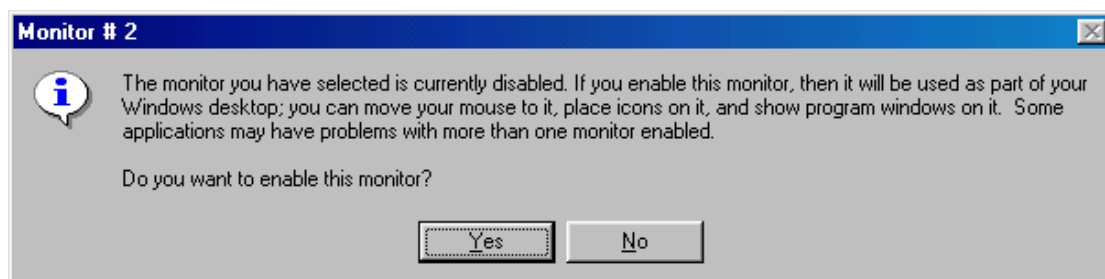
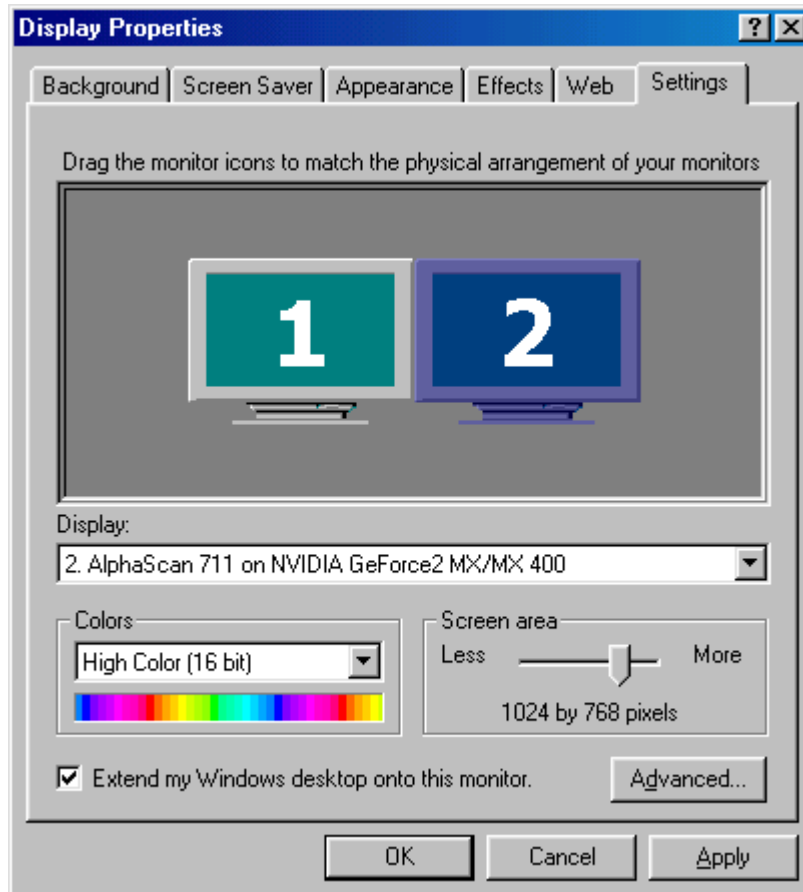


2. EXTENDED MODE

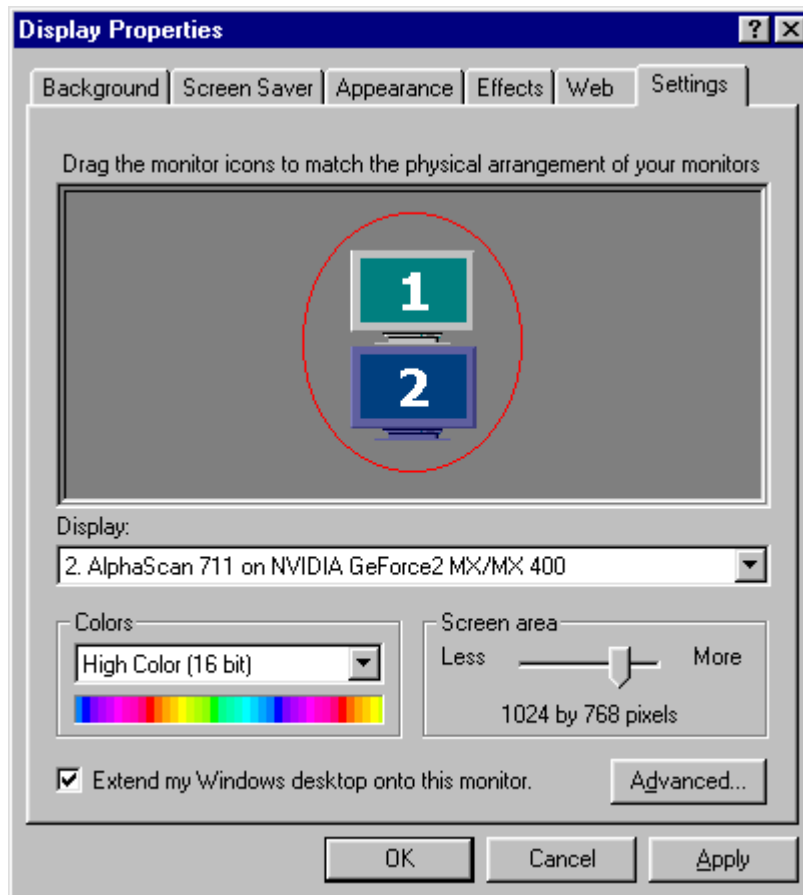
2.1 Right click mouse button on desktop, select **properties**.

2.2 Select **settings**.

2.3 Select second monitor and click **Yes**, then click **Apply**.

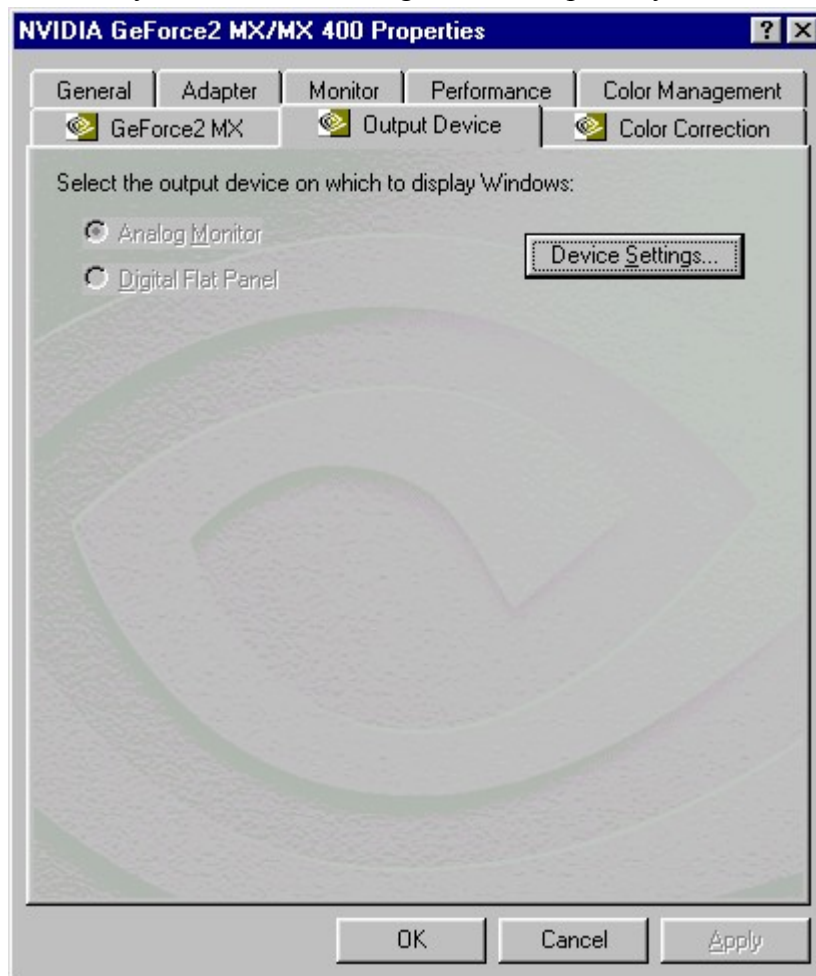


2.3-1 You can change your Extended Modes.



2.4 Click **Advanced**, then select **Output Device**.

If you connect to analog monitor or panel, you can select your output device.

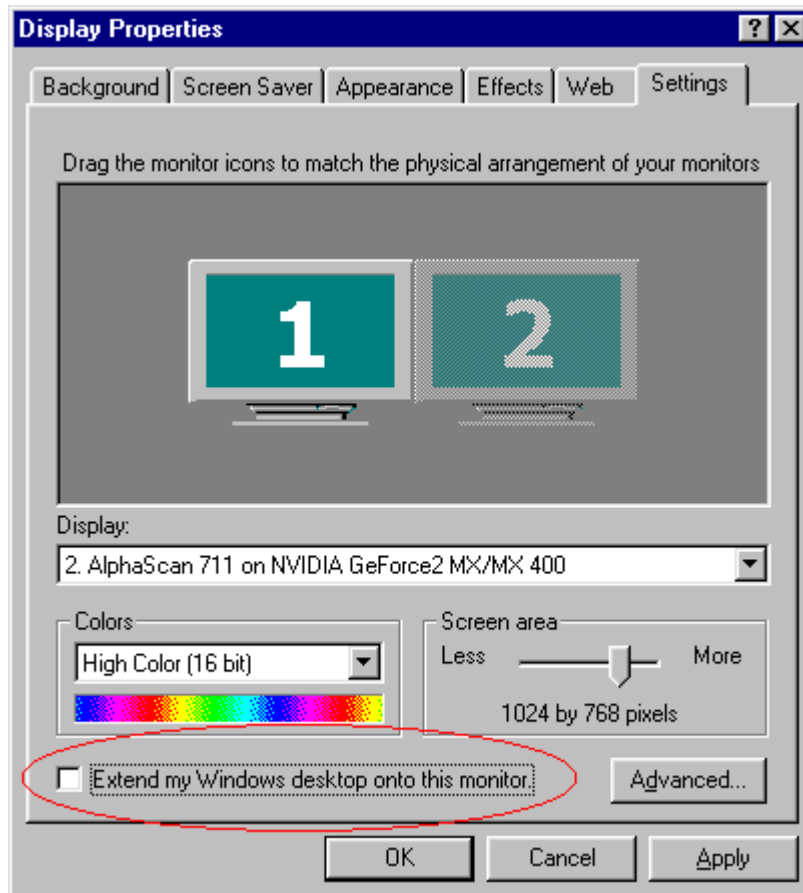


2.5 How to disable Extended Mode

2.5-1 Right click mouse button on desktop, select **properties**.

2.5-2 Select **settings**.

2.5-3 Do not select “**Extend my Windows desktop onto this monitor**”, then click **Apply**.



Trademark Acknowledgments

All brand names and trademarks are the property of their owners.