



Topics

Click on an item in green to get more information on the specific topic.

Program Operation:

[About the program](#)

[Backing up files](#)

[Choosing backup times](#)

[Choosing file types](#)

[Preferences](#)

[Quitting the program](#)

[Saving settings](#)

Legal Information:

[What is Shareware?](#)

[Why should I register?](#)

[Legal Mumbo-Jumbo](#)

Miscellaneous Items:

[Other Cygnus Productions products](#)



About WinFile BackUp

WinFile BackUp © Copyright 1993, 1994, Cygnus Productions.
All Rights Reserved.

The Cygnus Productions logo is a registered trademark of Cygnus Productions.

WinFile BackUp is designed to make backup copies of your important Windows files in case of disaster. Backups of important files are essential in any business, and Windows is a big part of business itself. Thus it is crucial that you maintain a recent copy of the critical files many of your programs may need to operate with Windows.

WinFile BackUp automatically detects your \WINDOWS and \WINDOWS\SYSTEM directory and backs up the files you choose to the directory or disk of your choice.

You may also set the timer so that backups are performed in the background at an interval that you specify.

WinFile BackUp is not crippleware. It is fully functional and has no features disabled, and no nag boxes begging you to register...we respect your integrity. It's yours to try for 14 days. If after that time you like WinFile BackUp and continue to use it, you are required to register with Cygnus Productions. For more information on registering see, 'Why Should I Register?'

We welcome and encourage any questions, comments, problems (with the program that is!) or possible [bug](#) notices you may have about WinFile BackUp or our company. Please send them to:



Cygnus Productions

P.O. Box 1298
Hines, IL 60141



Voice Mail: (708) 764-9453



CompuServe: 74541,2174
Internet: FORNALSKY,DAVE@FORUM.VA.GOV

Please be sure to include your name, return address, version of WinFile BackUp you're using and optionally a telephone number where you can be reached.

See also:

[What is Shareware?](#)

[Why should I register?](#)

[Legal Mumbo-Jumbo](#)

[Other Cygnus Productions products](#)

Bug

A bug is an error in the code of a program that causes it to terminate abnormally or behave in a manner that the program was not designed for. Programmers 'debug' their software before shipping it, but particularly nasty 'bugs' may escape detection and remain in the shipping version of a software program.



Backing Up Files

Follow the instructions below to perform a backup. (If you have already set the destination directory and the file types you want to be backed up, proceed to step 3. Otherwise, start with step 1.)

1. Make sure you have your destination directory set to where you would like the files copied to. (**Note:** the destination directory cannot be the \WINDOWS or \WINDOWS\SYSTEM directories.)
2. Select the type of files you want to be backed up. Click the 'Change file types' button on the button bar, or press the F2 key to bring up the menu.
3. Start the backup by clicking the 'Start backup' button on the button bar, or by pressing the F9 key. Depending on whether you have the 'Warn before backup takes place' option checked under Preferences, you may be warned before the impending backup.

It's important to note that WinFile BackUp will only backup files that are in the \WINDOWS and \WINDOWS\SYSTEM directories.

Once the backup has been started, the status windows will display the current file being copied and the total bytes copied. If WinFile BackUp is minimized, the file currently being backed up will be displayed directly below the program's [smart icon](#).

Smart Icon

WinFile BackUp uses a smart icon when the timer is on and the program is minimized. The minimized icon will be animated to show that the timer is on, and it will display the time till the next backup is performed. When the timer is off, no time is displayed and the icon is not animated.



Choosing Backup Times

To choose a new backup time:

1. Bring up the Timer menu by clicking the 'Set timer' button on the button bar, or by pressing the F3 key.
2. Select the [radio button](#) with the desired backup time and then click the 'Done' button.

When the timer is active, the word 'Time' in the main window will flash red.

When you choose a new time, the time till next backup will reset to the time you selected. For example, if there were 13 minutes till the next backup, and you then choose the timer to do a backup ever hour, the next backup would then switch from 13 minutes to 1 hour till the backup.

See also:

[Choosing file types](#)

Radio Button

A radio button, also called an option button, is used to make one selection between several choices of different items. Radio buttons are a common feature in many Windows applications. They are easily identified as small circles with text next to them, one of which will be filled in to indicate it is the current selection.



Choosing File Types

To choose the file types you wish to backup:

1. Bring up the File Types menu by clicking the 'Change file types' button on the button bar, or by pressing the F2 key.
2. Select the [check boxes](#) with the desired file types and/or create a custom file type, then click the 'Done' button.

The different file types are:

AUTOEXEC.BAT: The AUTOEXEC.BAT file can be found in the root of the directory your computer boots up from and contains many important commands and parameters for not only Windows, but DOS and many other programs. It's a good idea to always keep this box checked.

CONFIG.SYS: The CONFIG.SYS file can also be found in your root directory, and like the AUTOEXEC.BAT file, contains important information that programs need to run. It's a good idea to always keep this box checked.

***.INI files:** INI files are initialization files used by Windows programs so that they may start properly. They may also hold preferences that were set when you used the program. You should always have a current backup of all your *.INI files.

***.GRP files:** GRP files are group files used to store the icons and information that start your various Windows programs. You should always have a backup copy of your *.GRP files incase one should become corrupted.

***.PIF files:** PIF files are Information files that tell Windows how to use your DOS programs. Many DOS programs come with a PIF file, so it's important to keep a backup copy of these.

***.DRV files:** DRV files are drivers used by windows and other programs. These are important files and you should keep a backup copy of them. Driver files don't change however, so unless you or programs you use change drivers often, you may not need to have this box checked all the time.

***.DLL files:** DLL files are dynamic link library files that contain important information used by Windows and other programs. Some DLL files are contained in the \WINDOWS directory, but many more are contained in the \WINDOWS\SYSTEM subdirectory. You should make backup copies of all your DLL files. DLL files don't change however, so unless you or programs you use add new DLL files to the system often, you may not need to have this box checked all the time.

***.TRM files:** TRM files are files created by the Windows Terminal program. If you have custom terminals set up using this program, check this box to make sure you backup copies of them. If you don't use the Terminal program you can leave this box unchecked.

***.CRD files:** CRD files are files created by the Windows Cardfile program. If you created a card file (or files) using this program, check this box to make sure you backup copies of them. If you don't use the Cardfile program you can leave this box unchecked.

***.MID files:** MID files are general MIDI files. MIDI is the language that electronic musical instruments communicate to each other with. Windows comes with a few MID files, but unless your a musician who works with MIDI and *.MID files that are stored in your Windows directory, you can probably keep this box unchecked.

***.CLP files:** CLP files are files saved from the Windows clipboard. If you have saved any files directly from the Windows clipboard you should check this box to make sure you backup copies of them. If you haven't saved any *.CLP files and don't plan to, you can keep this box unchecked.

You may also create custom file types to be backed up. Simply type a short description of the type of file in the box marked 'Name' and then type the three letter extension in the box marked 'Extension'. When your done, check the box next to your new custom file type to include it in forthcoming backups. That's it! The next time a backup is performed, any files in your \WINDOWS or \WINDOWS\SYSTEM directories that match your custom extension will be backed up.

You can always uncheck any custom file types while retaining the information you entered, just like the file types that come with WinFile BackUp.

It's important to note that WinFile BackUp will only backup files of the above types that are in the \WINDOWS and \WINDOWS\SYSTEM directories.

See also:

[Choosing backup times](#)

Check Box

A check box is used to select an item. Where as a [radio button](#) will only allow you to choose one item in a group, several check boxes can be selected to make several choices. Check boxes are a common feature in many Windows programs. They are easily identified as a small square with an 'X' in it if it's checked, or empty if it's unchecked.



Preferences

To change the program's preferences:

1. Select 'Preferences...' from the 'File' menu or use the Alt key combination.
2. Select the [check boxes](#) to enable or disable the desired features.

The different preferences are:

- **Display button bar icon messages:** When checked, a small message box will be displayed under the buttons on the button bar describing their function when the pointer is moved over them. Unchecked, the messages are not displayed.
- **Start program minimized:** When checked, the program will be minimized every time the program is started. Unchecked, the program will start at its normal size in the center of the screen.
- **Warn before backup takes place:** When checked, you will be warned before any backup takes place. Unchecked, all backups will be performed without prior warning.
- **Warn before overwriting files:** When checked, you will be warned before any files being backed up are overwritten. Unchecked, files in the destination directory with an identical name as the file currently being backed up will be overwritten.
- **Backup system, hidden and read-only files:** When checked, any system, hidden or read-only files in your \WINDOWS or \WINDOWS\SYSTEM directories will be backed up. Unchecked, any system, hidden or read-only files will not be copied. (**Note:** when this box is unchecked, backups may be slightly faster)
- **Use multitasking:** When checked, WinFile BackUp will periodically yield control of the system when a backup takes place to any other applications that may be running. This is useful when running sensitive applications like communication packages that require constant CPU time along with WinFile BackUp. Unchecked, WinFile BackUp will take control of the system until the entire backup is complete. (**Note:** when this box is unchecked backups may be somewhat faster, however, keep in mind that no other running applications will receive CPU time until the backup is complete)

See also:

[Choosing backup times](#)

[Choosing file types](#)



Quitting the Program

To quit the program:

1. Click the 'Quit program' button on the button bar or use the Alt key combination. (**Note:** you will not be prompted to make sure you really want to quit.)

See also:

[Saving settings](#)



Saving Settings

To save the programs current settings:

1. Click the 'Save' button on the button bar or use the Ctrl+S key combination.

When you quit WinFile BackUp all settings are automatically saved, but it's a good idea to save them manually periodically as a precaution when using WinFile BackUp on an unstable system (though, why you would use Windows and any important programs and data on an unstable system would be a mystery). However, If the file containing these settings should become corrupted or deleted, WinFile BackUp will simply create a new one.



What is Shareware?

Why, that's a good question! Shareware is a means by which a developer or company creates an application and allows it to be copied or passed around freely. This bypasses the normal retail method of distributing software, and is beneficial to both the developer and consumer.

"How", you ask? Well, for developers it makes the cost of distributing the application extremely cheap. Since it can be freely copied and uploaded to BBS's, distribution is not the nightmare it might be for small, start-up companies. Plus, the program reaches the hands of people who want to use the 'Try before you buy' method, people that might not otherwise consider trying the application. The consumer benefits by being able to test-drive the program before actually paying for it, to see whether it is what he or she is looking for. You're also likely to find low prices on Shareware products.

Most Shareware products allow you to try them free of charge for a few weeks. After that initial trial period, if you decide to continue using the product you're required to register it with the company that produced the application and pay the registration fee.

It's an elegant method that benefits everyone, and we at Cygnus Productions hope you find this utility useful and register with us.

See also:

[About the program](#)

[Why should I register?](#)

[Legal Mumbo-Jumbo](#)

[Other Cygnus Productions products](#)

Why should I register?

There are lots of reasons to register your Shareware. Here are just a few:

- **Service and Support:** With your registration comes the ability to contact us on our voice mail or through the Internet with your problems or questions concerning WinFile BackUp or any of our products.
- **Upgrade Offers and Special Deals:** Registered users are entitled to special discount prices on new versions of WinFile BackUp. You may also get special deals on other Cygnus Productions products like StatBar, our resource monitor. StatBar is normally \$7, but when you register WinFile BackUp the cost is only \$5. To receive a copy of StatBar when you register WinFile BackUp simply fill in the appropriate blanks on the WinFile BackUp registration form.
- **Low Price:** Most Shareware products carry low price tags, especially utilities like this one. WinFile BackUp is no exception to this rule. See the ordering information below for WinFile BackUp's small registration fee.
- **A warm feeling all over:** It feels good to support a concept like Shareware that pays you back in so many ways. Registering WinFile BackUp and all your Shareware products helps keep the Shareware concept alive and well!

Now that you know why you should register, here's how:

If you've been using WinFile BackUp for more than 14 days, like what you see and want to continue using it please register with us:

Print and fill out the file called ORDER.TXT that should have come with WinFile BackUp, and mail it along with your \$10 registration fee to:



**Cygnus Productions
P.O. Box 1298
Hines, IL 60141**

If ORDER.TXT was missing or you don't have a printer: send your \$10 registration fee to the address above along with your full name, address, version of WinFile BackUp you're using and optionally a telephone number.

If a more current version of WinFile BackUp is available than the one you're registering, we'll send you a copy.

Thanks for trying WinFile BackUp!

See also:

[About the program](#)

[What is Shareware?](#)

[Legal Mumbo-Jumbo](#)

[Other Cygnus Productions products](#)



Legal Goodies

WinFile BackUp © Copyright 1993, 1994, Cygnus Productions.

All Rights Reserved.

The Cygnus Productions logo is a registered trademark of Cygnus Productions.

WinFile BackUp version 3.00 is being distributed as *Shareware* and may be copied and uploaded freely by single users (disk vendors and distributors please view the VENDOR.TXT file for more information), as long as the program remains unmodified, contains all files and is not reverse engineered. If you continue to use WinFile BackUp for more than 14 days you are required to register the program with Cygnus Productions. For more information on registering see, 'Why Should I Register?'

THIS SOFTWARE PACKAGE (CONSISTING OF THE EXECUTABLE FILE, ASSOCIATED FILES AND ELECTRONIC DOCUMENTATION) IS BEING PROVIDED "AS IS" WITHOUT REPRESENTATION OR WARRANTY OF ANY KIND, EITHER EXPRESSED OR IMPLIED, INCLUDING WITHOUT LIMITATION, ANY REPRESENTATIONS OR ENDORSEMENTS REGARDING THE USE OF, THE RESULTS OF, OR PERFORMANCE OF; ITS APPROPRIATENESS, ACCURACY, RELIABILITY OR CURRENTNESS. THE ENTIRE RISK AS TO THE USE OF THIS PACKAGE IS ASSUMED BY THE USER. IS ANYONE EVEN BOTHERING TO READ THIS? IN NO EVENT WILL CYGNUS PRODUCTIONS, ITS AFFILIATES OR EMPLOYEES BE LIABLE FOR DAMAGES, DIRECT, INDIRECT, INCIDENTAL OR CONSEQUENTIAL, RESULTING FROM ANY DEFECT IN THE PACKAGE, EVEN IF CYGNUS PRODUCTIONS HAS BEEN ADVISED OF THE POSSIBILITY OF SUCH DAMAGES. ANY AND ALL USE OF THIS PACKAGE, FOR ANY PURPOSE, WITH NO REGARD TO THE LEGALITY OF SUCH USE OR PURPOSE, IS THE COMPLETE AND SOLE RESPONSIBILITY OF THE USER.

Any trademarks mentioned in the WinFile BackUp help file are the property of their respective owners.

If you have any questions, please feel free to contact us. For information on contacting us see, 'About the program' in the Topics menu.

See also:

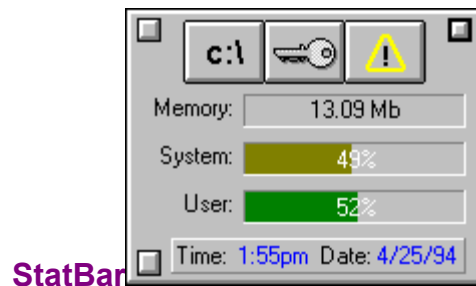
[About the program](#)

[What is Shareware?](#)

[Why should I register?](#)

[Other Cygnus Productions products](#)

Other Products



If you're the kind of person who likes to know the current state of Windows resources at all times, you should appreciate our utility called StatBar.

- StatBar monitors free system memory and resources so you can always be aware of the current state windows is in.
- StatBar allows you to perform a graceful shutdown of windows, restart windows, or reboot your machine with just a single mouse click.
- StatBar can remain in constant view on top of all other windows so that it can be seen at all times.

StatBar costs just \$7. But you can order a copy of StatBar when you register WinFile BackUp for just \$5. You can use the same form to order StatBar that you use to register WinFile BackUp. For more information on obtaining a copy of StatBar see, 'Why should I register?'

See also:

[What is Shareware?](#)

[Why should I register?](#)

[About the program](#)

