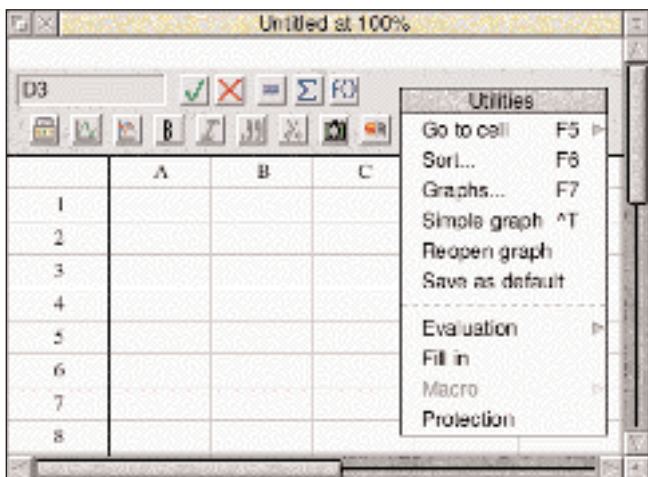


I have now received a release version of Schema 2 and I am pleased to report that nearly everything I said about it in my group survey review (RISC User 7:5) still stands.

Schema 2 comes on a single disc along with an example and resources disc and a hefty 370 page manual. It runs happily on all versions of RISC OS including 3.5, and needs a minimum

Schema 2 - The Update

Alan Highet updates his views on the latest incarnation of Clares spreadsheet.



The standard button bar and the utilities menu

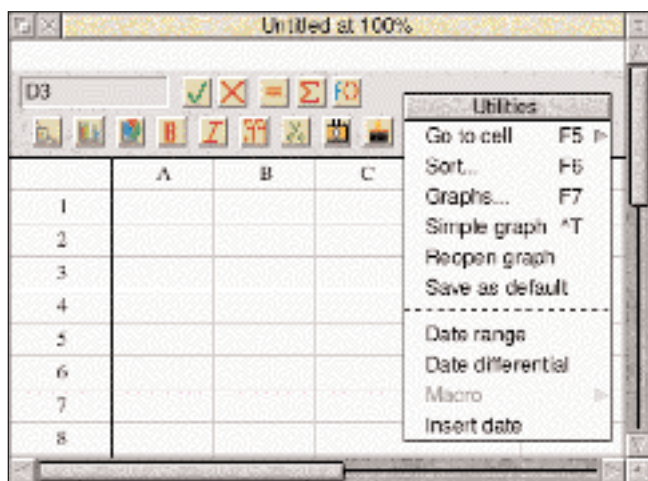
all from a double click. This can all happen without the user even knowing that a spreadsheet is being used. This is rather an extreme idea but perfectly possible.

On a more general level it is possible to create simple spreadsheets with all access to certain functions removed, which may be beneficial in schools for teachers wishing to simplify the learning process. Menu items may be removed and new ones added enabling custom written

of 2Mb of memory.

The manual is well written and well thought out, leading you through a variety of tutorials which gradually introduce all aspects of the program. A section devoted to techniques then explains everything in more detail and provides numerous illustrations to aid learning. Finally there is an appendix which lists all the standard functions and their uses.

Originally I felt that the degree of customisation allowed by Schema 2 was questionable. However, having had a little more time to try things out with the full working version I have changed my views. Because the entire Schema workspace can be saved and reloaded you can generate what appears to be a stand-alone application which will load, request various figures, load these into the relevant parts of the spreadsheet, generate results and close down



macros to be run as if they were native functions. In fact standard functions such as the fill command are actually implemented as macros. Icons may also be added or removed from the button bar, again allowing the running of custom macros.

The button bar and utilities menu re-designed by the user

Figure 1 shows the standard Schema button bar along with the utilities menu, while Figure 2 shows a somewhat garish redesign of the icon bar as well as some specialist data manipulation options inserted by me into the utilities menu.

PRODUCT INFO

Product	Schema2
Supplier	Clares Micro Supplies 98 Middlewich Road Rudheath Northwich Cheshire CW9 7DA tel. 0606 48511 fax 0606 48512
Price	£139.00 ex. VAT

The macro language is very similar to the Basic language supplied with all Acorns, and a macro editor and manual is supplied free of charge on request to all registered users. Again the manual is very clear and takes the user through a difficult subject with many examples

which are easily followed.

The macro language also includes a fairly comprehensive set of drawing commands which will allow the import of Draw files as well as the generation of quite complex graphics. Imagine being able to generate an engine model directly from a spreadsheet with the ability to try out various dimensional changes and view the results. Maybe I'll try that next week!

I was also pleased to see that Schema had lost nothing of its speed since I last used it, and it is still one of the quickest spreadsheets for recalculation.

My only criticism of Schema 2 is the overall look and feel of the product. I still feel that the Resultz/Fireworkz software has the professional-looking interface. I know it



If YOU are thinking seriously about

S T A T I S T I C S

Then "FIRST"

1st and 1st Jr have enhanced specifications.

RISC OS 2 and 3 compliant. Structured Menu System. "Spreadsheet" data entry.

Simple access to UNMATCHED STATISTICAL FACILITIES. Drawfile output of Graphics. Ultra-easy import and export of CSV files giving smooth data interfaces to other software. Automatic, context sensitive Manual.

Mouse driven with optional keyboard shortcuts

Statistical content of 1stJr is highly relevant to Educational requirements

Upgrade paths from single tasking versions are available.

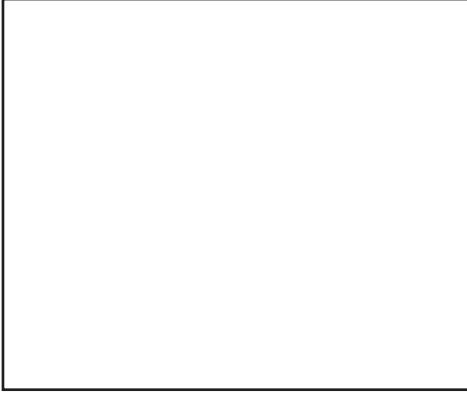
SCHOOLS Ask about our NEW LOW COST product 1stL (site licence £150)

Serious Statistical Software

isn't everything, and is also subjective, but to attract the business customer software has to compete with the impressive graphical front ends which can be seen on Windows programs.

Where Schema excels is in the superb macro language, which I think is the easiest to use, and the customisation which is extremely easy to implement. The downside to this is the price

which is one of the highest on the Acorn platform, although very reasonable when you compare it to other platforms.



caption