

## Creating a Virtual CD



After you install Virtual CD-ROM, the first step to using Virtual CDs is to create some. Select a CD-ROM disc or several discs to turn into Virtual CDs, and follow the steps below.



**To create a *CD container file*, or *Virtual CD*, do the following:**

- 1 Insert a CD-ROM in your CD-ROM drive.
- 2 Start Virtual CD-ROM. Select Programs -> Virtual CD-ROM 1.0 -> Virtual CD-ROM from the Start menu, or double-click on the Virtual CD-ROM icon in the Virtual CD program group (NT 3.51).
- 3 In the application, choose Build Image from the Edit menu, or click on the Build New Virtual CD button in the toolbar.
- 4 Follow the prompts in the Virtual CD Builder applet.


After you create a CD container file, it is automatically added to the list of available Virtual CDs in the Virtual CD-ROM application.

[Click here to see how this is done](#)

**Tip:** Depending upon the amount of data on the CD-ROM, the speed of your computer's processor, and other factors, building a Virtual CD may take from several minutes to over an hour. You may want to set up one or more Virtual CD builds to run overnight.

{button ,AL('Build',0,'')} [See Also](#)

**Animation: Creating a Virtual CD**

Click on the play button  below to begin. The play button will change to a pause button, which you can press to stop the playback at any time. You can also drag the slider to go to a particular part of the animation.

```
{mci_left NOMENU,BUILD PROCESS.AVI}
```


## Inserting a Virtual CD



After you have created a Virtual CD, you can insert (mount) it by simply dragging its icon from the list of Virtual CDs on the right side of the application window to a drive letter on the left. Or, you can highlight a particular drive and a particular Virtual CD, and click on the Insert button in the toolbar or choose Insert from the Edit menu.

[Click here to see how this is done](#)

**Animation: Inserting a Virtual CD**

Click on the play button  below to begin. The play button will change to a pause button, which you can press to stop the playback at any time. You can also drag the slider to go to a particular part of the animation.

```
{mci_left NOMENU,MOUNT BY DRAG.AVI}
```

## Ejecting a Virtual CD



To eject (dismount) a Virtual CD, select the drive letter in the Virtual CD-ROM application and click on the Eject button in the toolbar or choose Eject from the Edit menu.

## Changing Virtual CD Views



You can change how your available Virtual CDs are listed, just as you can change file views in the Explorer.

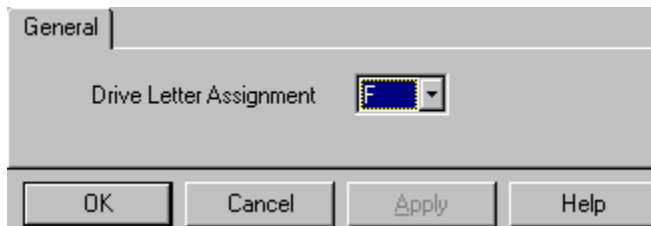
Click on one of the three Views buttons to list Virtual CDs by large icon, small icon, or with file details respectively. These options are also available from the Edit menu, and by clicking the right mouse button in the Virtual CD area (right side) of the application window.

## Virtual CD Device Properties

Use this dialog box to set the default drive letter assignment for the highlighted Virtual CD device. Choose a drive letter from the drop-down list box, and choose OK. After you reboot, the Virtual CD device will use the specified drive letter.

Or, click on Cancel to make no change. If the device had a previous drive letter assignment, it will retain it. If it had no assigned drive letter, the device will continue to use the first available drive letter found.

Click on the area that you want information about in the sample dialog box below.



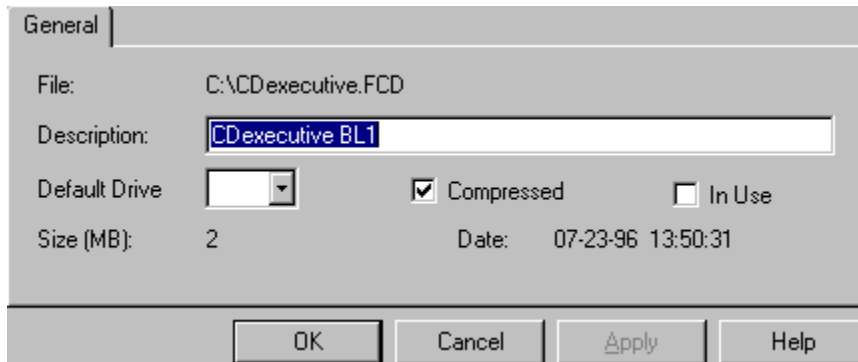
**Note:** To stop Virtual CD-ROM from using a particular drive letter or letters, **all** Virtual CD devices must be given drive letter assignments. For example, your Virtual CD devices use the first available letters: F, G, and H. You assign the device at F to letter M and reboot. The unassigned devices will use F and G, and the assigned device will use M. You must assign all three to stop Virtual CD-ROM from using drive letter F.

{button ,AL(^'Properties',0,'')} [See Also](#)

## Virtual CD Properties

Use this dialog box to set the default drive that your CD container file inserts to, to change its description, and to view information about the Virtual CD.

Click on the area that you want information about in the sample dialog box below.



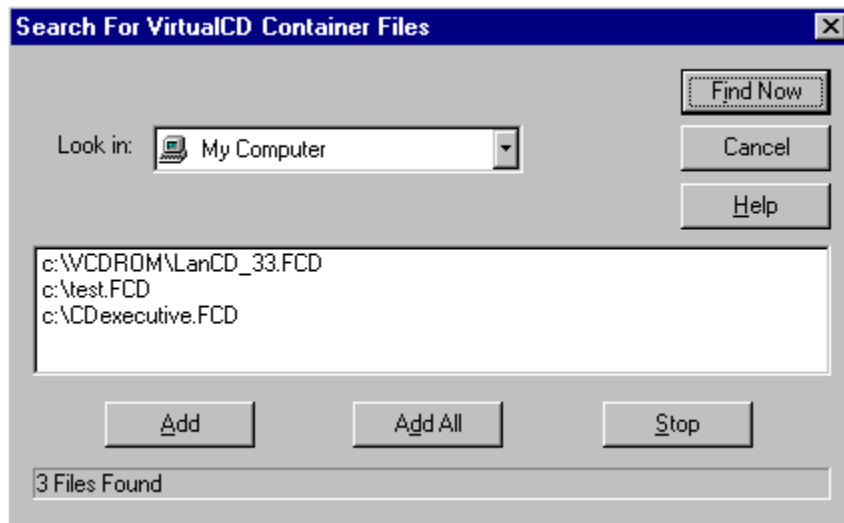
{button ,AL('Properties',0,'')} [See Also](#)



### Find: Search for CD Container Files

Use this dialog box to search your computer (including any attached network drives, if desired) for CD container files, and then select Virtual CDs to add to your display.

Click on the area that you want information about in the sample dialog box below.



{button ,AL('Find',0,'')} [See Also](#)

This line shows the full path and file name of the CD container file represented by this icon.

Edit this field to change the text displayed under the Virtual CD icon in Virtual CD-ROM.

Click on the arrow and select a drive letter from the drop-down list box to set the preferred drive for inserting this Virtual CD. When you double-click the Virtual CD icon, it will automatically insert to this drive, if available.

If this box is checked, it indicates that the container file was compressed when it was created. You cannot change this box in Properties.

If this box is checked, it indicates that the Virtual CD is currently being used by another process on your computer, or by a user on the network if this computer is acting as a server. You cannot change this box in Properties.

This line shows the size of the CD container file, to aid you when deciding whether to delete a Virtual CD to recover disk space.

This line shows the date and time that the CD container file was created.



Click this button to save the changes you have made in this dialog box, and return to the main Virtual CD-ROM window.

Click this button to discard changes you have made, and return to the main window.

This button is not applicable in this dialog box.

Click this button to display this help file.

Help brought to you by:

Brian Wessels

Logicraft Information Systems

Copyright 1996 Logicraft, All Rights Reserved.

Please send comments or suggestions to **[doc@logicraft.com](mailto:doc@logicraft.com)**.

Click on the arrow and select a drive letter from the drop-down list box to assign a drive letter to the selected Virtual CD device.

Choose a drive to search from this drop-down list box. If you choose My Computer (the default), all connected drives are searched.

Click this button to begin searching for CD container files in the areas specified in the "Look in" drop-down list box.

This box shows all Virtual CDs that have been found in the area you searched.



Click this button to move the Virtual CD you have selected (in the search results area) to your available Virtual CDs display.

Click this button to move all of the Virtual CDs found in the search to your available Virtual CDs display.

Click this button to interrupt the search process. If a Virtual CD you are looking for is displayed in the search results window, you may want to click Stop to discontinue further searching.

This area displays the drive and directory being scanned while a search is underway.

### Specifying Additional Virtual CD Drives

By default, Virtual CD-ROM creates one "virtual drive" so that you can insert Virtual CDs. You can specify additional drives, up to 24, so that you can insert several Virtual CDs simultaneously.



**To specify additional drives:**

- 1 Choose Number of Drives from the Edit menu
- 2 Increase the counter to the desired number.

**Note:** Do not set the number of drives to a value higher than what is actually available to you, or conflicts may result. Drive letters may be used by hard disks, CD-ROM drives, or network drives on your system.

## Removing and Deleting Virtual CDs



You can remove Virtual CDs from Virtual CD-ROM, and optionally delete the CD container files entirely from your hard disk if desired. These functions are available with the delete button on the toolbar and the Delete option in the Edit menu.



### To remove a Virtual CD:

- 1 Highlight the Virtual CD in the list on the right.
- 2 Click on the Delete button or choose Delete from the Edit menu.  
If the Virtual CD is currently inserted, it will be ejected when you remove it. A dialog box warns you about this before proceeding.
- 3 **To retain the CD container file, click on No when asked whether you want to delete it.**



### To delete a Virtual CD:

Follow the steps for removal, and **click on Yes** when asked whether you want to delete the CD container file. Deleting a Virtual CD frees up space on your hard disk for other items.

If you **remove** a Virtual CD, the application stops recognizing the container file as an available Virtual CD. You can use the Add or Find button (or the Add and Find options in the Edit menu) to bring the Virtual CD back immediately.

If you **remove and delete** a CD container file, you must rebuild it from the CD-ROM source disc before you can use it again. This process may take several minutes to over an hour.

## Adding Unrecognized CD Container Files



If you have removed but not deleted some CD container files from the your PC, or if you make a new network connection to a drive containing Virtual CDs, you have to add these Virtual CDs before you can use them.



If you know its name and location, you can add a particular CD container file to the Virtual CD-ROM display. If you are not sure of the name or location of a CD container file or files, you can scan local and network volumes for any and all Virtual CDs that are on them.



### To find and add any available container files:

- 1 Click on the Find button in the toolbar, or choose Find from the Edit menu.
- 2 In the Find dialog box, choose the locations to search from the Look In drop-down list box, and click on the Find Now button
- 3 After the application finishes scanning your drive(s), highlight the names of the Virtual CDs you want to add, and choose Add. Or, click on Add All if you want all of the listed Virtual CDs to be available. The Virtual CDs you select are added to the list of available Virtual CDs.

[Click here to see how this is done](#)




### To add a known CD container file:

- 1 Click on the Add button in the toolbar, or choose Add from the Edit menu.
- 2 In the Add Virtual CD dialog box, enter the full path and filename of the container file. CD container files have the .FCD extension.

[Click here to see how this is done](#)

{button ,AL(^Find',0,',')} [See Also](#)


### Animation: Finding Virtual CD Files

Click on the play button  below to begin. The play button will change to a pause button, which you can press to stop the playback at any time. You can also drag the slider to go to a particular part of the animation.

```
{mci_left NOMENU,FIND FASTCDS.AVI}
```



**Animation: Adding a Known Virtual CD**

Click on the play button  below to begin. The play button will change to a pause button, which you can press to stop the playback at any time. You can also drag the slider to go to a particular part of the animation.

```
{mci_left NOMENU,ADD A FASTCD.AVI}
```

## Setting Up CD-ROM Applications

Many CD-ROM applications are designed to have a small amount of executable code set up on your hard disk, which then calls to a larger store of information on CD-ROM. When these applications are set up, they require a drive letter for the CD-ROM drive.

Such applications function perfectly with Virtual CD drives as well. However, because it is possible to set up more than one Virtual CD drive letter, there are important considerations to ensure that your Virtual CD is always inserted to the drive where your application is expecting to find it.

First, insert the Virtual CD and set up the application using a drive letter that is always available. For example, your computer may be attached to network devices D through G when you log onto a network, but not have these devices when you do not log on. When you run Virtual CD-ROM, its first drive letter when the PC is networked will be H, and your application will expect to find the Virtual CD in drive H.

When you do not log into the network, Virtual CD-ROM will use the first available drive letter, D, instead of H. This will cause an application that uses drive H to fail. To avoid this problem, set your Virtual CD drive to use letter H at all times. You should also set this as the default drive for the Virtual CD to use.

[Setting Virtual CD Drive Letters](#)

[Setting the Default Drive for a Virtual CD](#)

{button ,AL(`Properties',0,`,`')} [See Also](#)

## Setting Virtual CD Drive Letters




**To enforce specific drive letters for Virtual CD drives:**

- 1 Select the drive in the Drives area (left-hand side) of the Virtual CD-ROM application window.
- 2 Click the **right** mouse button, and scroll down the menu to Properties.
- 3 In the Properties dialog box, select a drive letter from the Default Drive drop-down list box.
- 4 Click on OK.

[Click here to see how this is done](#)

### Animation: Setting Virtual CD Drive Letters

Click on the play button  below to begin. The play button will change to a pause button, which you can press to stop the playback at any time. You can also drag the slider to go to a particular part of the animation.

```
{mci_left NOMENU,SET FCD DEVICE LETTERS.AVI}
```

### Setting the Default Drive for a Virtual CD




**To set the default drive letter a Virtual CD uses:**

- 1 Select the Virtual CD name on the right side of the Virtual CD-ROM screen.
- 2 Click the **right** mouse button on the Virtual CD, and scroll down to Properties.
- 3 In the Properties dialog box, choose a drive letter from the Default Drive drop-down list box. Note that only those drive letters assigned to Virtual CD drives are shown in this list box.
- 4 Choose OK to close the dialog box.

After you have done this, you can double-click on a Virtual CD to automatically insert it to its default drive.

[Click here to see how this is done](#)

**Animation: Setting the Default Drive for a Virtual CD**

Click on the play button  below to begin. The play button will change to a pause button, which you can press to stop the playback at any time. You can also drag the slider to go to a particular part of the animation.

{mci\_left NOMENU,SET A FCD'S DEFAULT DRIVE.AVI}

### **Tips for Working With Virtual CDs**

The following guidelines may make working with Virtual CD-ROM easier for you:

- Double-clicking on a Virtual CD automatically inserts it to its default drive letter. If the Virtual CD does not have a default drive letter, the first available drive is used.
- You can resize fields in the Details view using the left mouse button.
- To quickly dismount one Virtual CD and mount another, insert the new one over the old one. Drag the new Virtual CD to the drive where the old Virtual CD is inserted. A dialog box warns you that you are about to eject the Virtual CD in the drive.
- It is a good idea to assign drive letters in the middle of the alphabet to your Virtual CD devices. Once these are assigned and Virtual CDs are set to default to one of the Virtual CD devices, your CD-ROM applications will usually keep working, even if you add hardware or connect to additional network drives.

## Uninstalling and Upgrading Virtual CD-ROM



Virtual CD-ROM includes an Uninstall application which carefully removes the software from your personal computer, including all associated:

- Programs
- Groups
- Icons
- Shortcuts
- Registry entries

**Note:** The Uninstall application does not delete your CD container files. This lets you uninstall Virtual CD-ROM prior to an upgrade, and then reuse your existing Virtual CDs with a new version of Virtual CD-ROM. If you want to delete the CD container files, you must do so with the application prior to uninstalling, or manually delete files with the .FCD extension.

**Upgrading:** You should always uninstall a prior version of Virtual CD-ROM before upgrading to a new version. This will remove hidden information such as registry entries, and avoid conflicts.

This is particularly important if you installed a pre-release version of this product, when it was named **FastCD personal edition**.

After uninstalling, follow the instructions with the new software to install the upgrade.



## Troubleshooting

**Problem:** The application or the operating system freezes or crashes.

**Explanation:** CD-ROM read-ahead is set in Windows. Virtual CD-ROM is not compatible with CD-ROM read-ahead.

**Solution:** Open the System control panel. Click on the Performance tab. Under Performance, click on the File System button. Under File System Properties, click on the CD-ROM tab. Under CD-ROM, choose **No read-ahead** from the "Optimize access pattern for" drop-down list box. Choose OK twice to close the control panel.

**Problem:** The Virtual CD I built does not work.

**Explanation:** Certain CD-ROM discs, which may be mastered in a non-standard way, cannot be read by the default disc scanning method in the Virtual CD Builder.

**Solution:** Rebuild and check the **Use sector read scan method** box on the Virtual CD Builder: Selecting the Source screen. Note that sector-read disc scanning method may cause system hangs on a small number of machines.

**Problem:** The Virtual CD Builder applet freezes or crashes when attempting to build a Virtual CD.

**Explanation:** A small number of systems experience problems with the sector-read disc scanning process used when estimating the CD-ROM size and copying the data to a Virtual CD. This is a secondary scanning method provided for problem discs.

**Solution:** In the Virtual CD Builder: Selecting the Source screen, uncheck the **Use sector read scan method** box to use the default disc scanning method.

**Problem:** After I installed Virtual CD-ROM, I could not access my local CD-ROM drive.

**Explanation:** The local CD-ROM drive is controlled by an older (legacy) DOS driver, which Virtual CD-ROM is not recognizing, and Virtual CD-ROM is taking the drive letter used by the local CD-ROM.

**Solution:** Start Virtual CD-ROM, right-click on the first Virtual CD drive, and choose Properties from the menu. In the Properties dialog, change the device's default drive letter to a letter after the one used by your local CD-ROM drive. Exit Virtual CD-ROM and restart the computer. See also [Virtual CD Device Properties](#)

**Problem:** My computer displays CD-ROM drive characteristics for my floppy diskette drive(s).

**Explanation:** The Number of Drives value is set too high. You must specify a number of virtual CDs equal to or less than the number of drive letters you have available, excluding those taken up by hard disks, diskette drives, and network drives.

**Solution:** Choose Number of Drives from the Edit menu, and decrease the value.

**Problem:** Virtual CDs are missing from the display.

**Explanation:** You have removed, or removed and deleted, the Virtual CDs in question. Or, the Virtual CDs are found on a network drive which is not currently available.

**Solution:** Check your network software and hardware, if the Virtual CDs were on a network volume. Use the Find button to locate and re-add the Virtual CDs you are missing. If the CD container files were deleted, rebuild them using the Build New Image button.

## Technical Support

For Logcraft Customer Support, send email to **Virtual-CDROM@logcraft.com**.

You can find information about Virtual CD-ROM and other Logcraft products on our World Wide Web page, at **<http://www.logcraft.com/>**.

To log on to our Customer Support bulletin board, call **1-800-758-0030** from outside New Hampshire, or **(603) 881-5918** from within New Hampshire and international locations.

Comments regarding Logcraft's documentation can be sent via electronic mail to **doc@logcraft.com**.

## **Corporate Profile**

Logiccraft Information Systems is a worldwide developer, integrator and manufacturer of complete CD-ROM networking and management solutions for the DOS, Windows, Windows 95, Windows NT and Macintosh markets. Logiccraft provides the fastest access to CD-ROM databases over the widest range of networks and technologies in the industry.

The Logiccraft product suite consists of CD-ROM networking & management software, CD-ROM servers, towers and jukeboxes.



## Contact Information

### CORPORATE HEADQUARTERS:



#### Logicraft Information Systems, Inc.

22 Cotton Road  
Nashua, New Hampshire 03063

800-880-5644 / 603-880-0300  
fax 603-880-7229  
email: [sales@logicraft.com](mailto:sales@logicraft.com)  
internet: <http://www.logicraft.com>

### INTERNATIONAL HEADQUARTERS:



#### LIS Europe Corp.

Ambrose House  
Milton Road, Swindon  
Wiltshire SN1 5JA  
ENGLAND  
44 1793 610987  
fax 44 1793 524303  
internet: <http://www.logicraft.com/newuk.htm>

#### H+H

Herzberger Landstr.48  
37085 Goettingen  
GERMANY  
49 551 522080  
fax 49 551 5220825  
internet: <http://www.hh-zfrk.com>

{button ,AL(`contacts',0,`,`')} [See Also](#)

## Overview

Virtual CD-ROM makes CD-ROM applications faster, more portable, and easier to use. It accomplishes this by turning your CD-ROM data into hard disk data in a **CD container file**, also referred to simply as a **Virtual CD**.

Working with Virtual CD-ROM is a two stage process. First, you create Virtual CDs from your CD-ROM(s). After they are created, you "insert" them to and "eject" them from drive letters designated by the software. You can add more Virtual CDs at any time, and work with them just as you would with actual CD-ROMs. When necessary, you can delete your Virtual CDs to regain hard disk space.

## Why Use Virtual CDs?

Virtual CDs allow you to:

- Speed up your CD-ROM applications
- Use more than one CD simultaneously, even though you only have one CD-ROM drive
- Use CD-ROMs on PCs without a CD-ROM drive
- Take CD-ROMs on the road, loading them from your notebook PC's docking station and using them in your notebook PC without a CD-ROM drive

## Warning

Unless you have group or site licensing, it is a violation of your software license agreement with the vendor(s) of your CD-ROM application(s) to create more than one CD container file from a single CD-ROM, or to use the Virtual CD and the CD-ROM simultaneously. Consult the software license agreements that accompany your CD-ROM discs for more information.

## Requirements

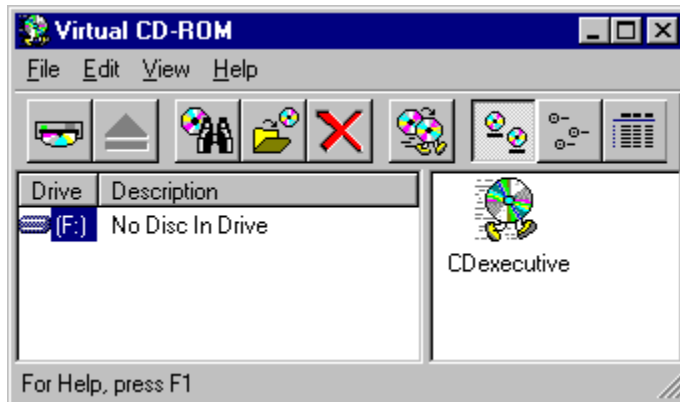
You must have the following configuration to use Virtual CD-ROM:

- A personal computer running Windows 95 or Windows NT 3.51, which meets all the minimum requirements of the operating system.
- A CD-ROM drive on at least one personal computer on your local area network. You can create Virtual CDs on a file server and use them on PCs that have no CD-ROM drive.
- Hard disk space to accommodate the Virtual CDs you create. We recommend at least 500MB of free disk space, depending upon the size and number of CD-ROM volume(s) that you want to place in CD container files.
- CD-ROM read-ahead turned **off** in the Windows 95 System control panel. (Go to the Performance tab, click on the File System button, and then click on the CD-ROM tab.)

## The Main Virtual CD-ROM Window

This topic explains the elements in the main Virtual CD-ROM window, shown below. The graphic below is a **hypergraphic**, which means that you can click on a part of the image to see an explanation of that item. You will find several hypergraphics throughout this documentation.

Click on the area that you want information about in the sample window below.



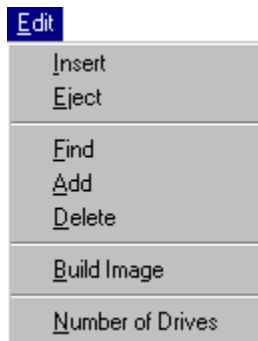
### File menu



From this menu, you can exit Virtual CD-ROM.



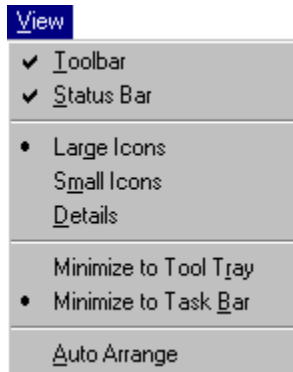
### Edit menu



From this menu, you can make changes to the Virtual CD drives and the Virtual CDs. Most of these options are also available from the toolbar.

Click on any of the menu items in this sample menu to display an explanation of what it does. (This pop-up will be replaced by a pop-up for the menu item.)

#### View menu



With this menu, you can control how things appear in the main Virtual CD-ROM window. Most of these options are also available from the toolbar.

Click on any of the menu items in this sample menu to display an explanation of what it does. (This pop-up will be replaced by a pop-up for the menu item.)

#### Help menu



From this menu, you can enter this help system, or view version and copyright information about the software.

Insert: Use this button or menu item to "insert" the currently selected Virtual CD (highlighted on the right) in the currently selected drive (highlighted on the left).

Eject: Use this button or menu item to remove the Virtual CD in the currently highlighted drive.

Find: Use this button or menu item to search your computer (included any connected network drives) for CD container files.

Add: Use this button or menu item to add an existing, known CD container file to the Virtual CD-ROM display.

Delete: Use this button or menu item to remove a Virtual CD from the display, and delete the container file from your hard disk (optional).



Build: Use this button or menu item to start the Virtual CD builder applet, to create a new Virtual CD from a CD-ROM.

Number of Drives: Use this menu item to specify the number of virtual CD-ROM drives available for inserting Virtual CDs. The default value is 1. After you make this change, you must reboot for it to take effect.

Toolbar: Use this menu item to control whether the toolbar buttons are displayed. All toolbar functions are also available from the menus.

Status Bar (View menu): Use this menu item to control whether the status bar is displayed at the bottom of the Virtual CD-ROM application window.

Large Icons: Use this button or menu item to display the Virtual CDs below by their large Explorer icons.

Small Icons: Use this button or menu item to display the Virtual CDs below by their small Explorer icons, so that you can see more of them at once.

Details: Use this button or menu item to display the Virtual CDs below in a list with full file details, including default drive, size, and modification date.

Minimize to Tool Tray: Use this menu item to make the minimize function place the Virtual CD-ROM application icon in the "tool tray" portion of the task bar (next to the clock).



Minimize to Task Bar: Use this menu item to make the minimize function place Virtual CD-ROM in the task bar. (This is the normal, default, minimize behavior.)

Auto Arrange: Use this menu item to control whether Virtual CD icons snap to a grid in the Virtual CDs area on the right side of the application window.

Drives area: This part of the application window lists the virtual CD-ROM drives that are available for inserting Virtual CDs. The drive icon changes and the Virtual CD's description is listed when you insert a Virtual CD. Click the right mouse button on a drive to change its properties.

Virtual CDs area: This part of the application window lists Virtual CDs the application knows about. Click the Find or Add buttons to add existing, unrecognized container files to the display. Click the right mouse button on a Virtual CD to change its properties.

Status bar: This area displays information about the current cursor position, including menu items and toolbar buttons.

## Virtual CD Builder: Welcome



This screen explains the steps involved in creating one or more CD container files. Check the "Don't show this again" checkbox to skip the Welcome screen when you use the Virtual CD Builder in the future.

{button ,AL(`Build',0,`,`')} [See Also](#)

### Virtual CD Builder: Selecting the Source

Select the CD-ROM that you want to put in a CD container file from the drop-down list box. In most cases, you will only have one CD-ROM available. If the wrong disc is inserted in your CD-ROM drive, change it and click on Rescan before continuing.

After you select the source and click on **Next**, the software begins scanning the disc to calculate and display its size on the next screen.

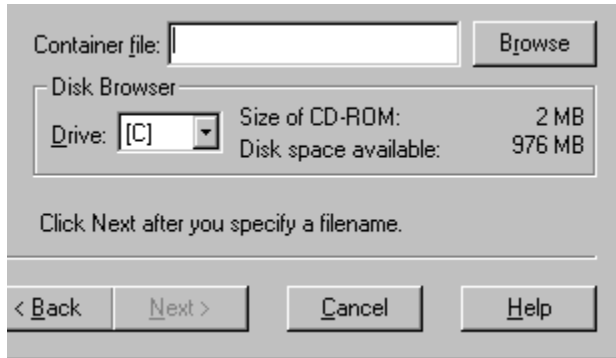
If the Virtual CD you build does not work correctly, rebuild and check the **Use sector read scan method** box on this screen. Note that sector-read disc scanning method may cause system hangs on a small number of machines. It is necessary only for certain drives or certain discs which were created with unconventional mastering techniques.

**NOTE:** To create one Virtual CD from another, you must check **Use sector read scan method**.

### Virtual CD Builder: Selecting the Destination

Select a hard disk location and file name for the CD container file you are about to create. The Virtual CD Builder calculates the size of the CD-ROM so that you can determine where it will fit.

Click on the area that you want information about in the sample dialog box below.



The dialog box is titled "Virtual CD Builder: Selecting the Destination". It features a "Container file:" label followed by a text input field and a "Browse" button. Below this is a "Disk Browser" section containing a "Drive:" dropdown menu (currently showing "[C]") and two status labels: "Size of CD-ROM: 2 MB" and "Disk space available: 976 MB". A horizontal line separates the input fields from the bottom section, which contains the instruction "Click Next after you specify a filename." and four buttons: "< Back", "Next >", "Cancel", and "Help".

Disk Browser	
Drive: [C]	Size of CD-ROM: 2 MB
	Disk space available: 976 MB

Click Next after you specify a filename.

< Back    Next >    Cancel    Help



### **Virtual CD Builder: Selecting Image Options**

Type the description that will appear with the icon for the Virtual CD you are creating. If you do not type a description, the image file name is used with the icon in the main Virtual CD-ROM screen.

To save space on your hard disk, check the "Use data compression:" check box. (This is checked by default.) The Estimate button will show about how much space the compressed data will take up.

### Virtual CD Builder: Managing Images

At this point you are ready to begin creating the CD container file. From this screen, you can go back and select additional CD-ROMs, delete a Virtual CD build task you have set up, or make changes to the options for a Virtual CD build. If you add CDs, you must have more than one CD-ROM drive, or you must be available to insert the next CD when requested.

Click on the area that you want information about in the sample dialog box below.

The screenshot shows a dialog box titled "Virtual CD Builder: Managing Images". It contains a table with two columns: "Name" and "Cache File". The first row has "(D:)" in the "Name" column and "C:\CDexecutive.FCD" in the "Cache File" column. Below the table are three buttons: "Add...", "Remove", and "Modify". Below these buttons is a text instruction: "Click Add to repeat the setup process for another Virtual CD build. When you are satisfied with your choices, click on Next." At the bottom of the dialog box are four buttons: "< Back", "Next >", "Cancel", and "Help".

Name	Cache File
(D:)	C:\CDexecutive.FCD

Buttons: Add... Remove Modify

Click Add to repeat the setup process for another Virtual CD build. When you are satisfied with your choices, click on Next.

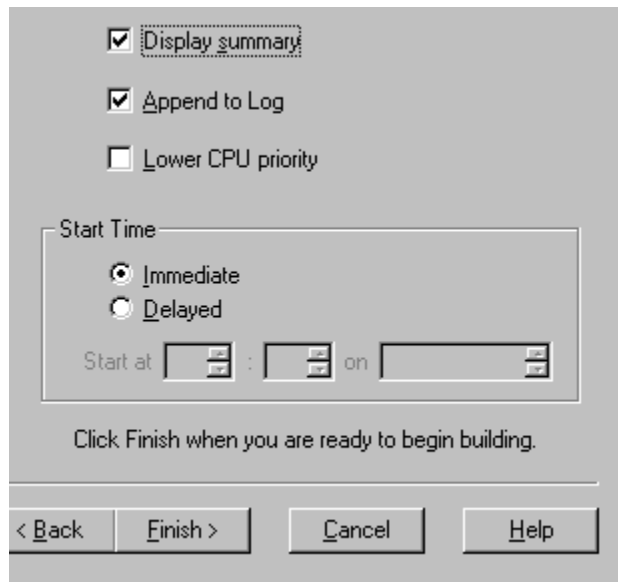
Buttons: < Back Next > Cancel Help

### Virtual CD Builder: Build Options

This screen lets you set characteristics of how the build will be done. You can control how much information you receive on the build process, and you can reduce the impact of the build on system performance, or even delay the build until a more convenient time.

After you click on Finish, a progress bar appears (if the build is immediate), and if Display Summary is selected, a statistics dialog appears after the build is complete. When you dismiss these dialog boxes, you are returned to the main Virtual CD-ROM display, where the new Virtual CD is automatically added.

Click on the area that you want information about in the sample dialog box below.



The screenshot shows a dialog box titled "Virtual CD Builder: Build Options". It contains three checked checkboxes: "Display summary", "Append to Log", and "Lower CPU priority". Below these is a "Start Time" section with two radio buttons: "Immediate" (selected) and "Delayed". Under "Delayed" is a "Start at" field with a time picker (HH:MM) and an "on" field with a date picker (MM/DD/YY). At the bottom, there is a line of text: "Click Finish when you are ready to begin building." and four buttons: "< Back", "Finish >", "Cancel", and "Help".

Type the filename to be used for the CD container file in the Explorer. Note that this is not the same as the icon description shown in the Virtual CD-ROM window. You can include a full path, including drive, if desired.

Click this button to search for a location to place the CD container file, or to look for a previous file to overwrite.

The Disk Browser area lets you choose a location where the CD container file will fit. If you have more than one hard drive available, choose a drive from this drop-down list box. If you specify a disk in the file name field above, this setting is ignored.

The Virtual CD Builder scans the selected CD-ROM, calculates its size, and displays the size here. Note that you may save up to 50% of this amount (30% savings is average) if you build the Virtual CD with Data Compression turned on.

This area shows how much space is available on the hard disk currently selected from the drop-down list box. Compare this to the estimated size of the CD-ROM to see if the Virtual CD will fit.



Click on this button to return to previous screens in the Virtual CD Builder application and make changes.

Click this button once you are through making changes on a particular Virtual CD Builder screen, to save your settings and go on. On some screens, the Next button is grayed until required fields (such as the container file name) are filled.

Click this button to completely stop the Virtual CD build process. To change some settings you have made, use the Back button rather than Cancel.

This field lists the CD-ROMs you have set up for Virtual CD builds, by their volume names (hard coded on the CD-ROM itself) and the drive letters where they are inserted.

This area lists the CD container file names you have entered for the corresponding CD-ROMs. Note that this is not the same thing as the description you provided, if any.

Click this button to set up the build process for an additional CD-ROM. Note that if you Cancel while adding a CD, the build you have already set up is canceled as well.

Click this button to delete the selected Virtual CD build in the field above. If you only have one Virtual CD build listed, it makes more sense to just click Cancel to discard it.

Click this button to go back and make changes to any of the options for the selected Virtual CD build.



Check this box to show Virtual CD build statistics once the process is complete. Clear this checkbox for unattended builds.

Check this box to record statistics in your Virtual CD build log file. This file is located in the directory where you installed Virtual CD-ROM. Clear this checkbox for test builds.

Check this box to build Virtual CDs in the background, while you perform other tasks on the PC. The Virtual CD build will take longer, but cause a smaller performance loss in your other applications.

Choose the Immediate radio button to commence the Virtual CD build as soon as you click on Finish below.

Choose the Delayed radio button to schedule the Virtual CD build at a time when the PC's CPU or the network will be less in demand. You must then set a specific start time; the default is the current time.

Use the up and down arrows next to each field to set an hour, minute, and day for the Virtual CD build. Hours are displayed in military time; for instance, 19:00 means 7:00pm.

Click the Finish button to begin the Virtual CD build(s). After you click Finish, you cannot back out to make changes, although you can use Cancel to stop the build altogether.

