

# Table of Contents



## Professional Toolkit Control Center for *Visual Basic*™

Application Overview

How to ...

Program History

Copyright Acknowledgments

License Agreement

Ordering Information

Help system version 1.0 May 1992

## Professional Toolkit

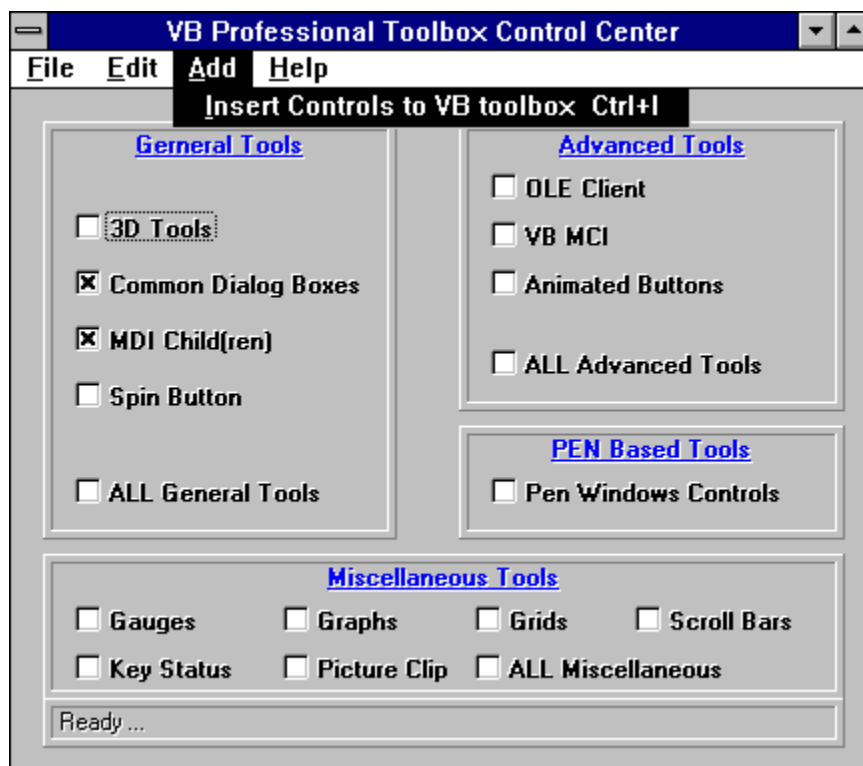


## Control Center

### Application Overview

The **Professional Toolkit Control Center** was developed to provide an efficient way of adding the Microsoft® Professional Toolkit Custom Controls to Microsoft® Visual Basic™.

Using a single "*point and shoot*" screen, you can easily select and then **ADD** your desired controls to your development applications.



Your commonly used tools can be saved, and automatically selected when you start.

This productivity tool can save you hours of work, by automating the addition of the custom tools that give your applications a professional "look and feel". For more information on how to use this application select **HOW TO** from the Table of Contents,

{bmr logoname.BMP} **How To ...**

**Select Tools to Add**

**De-Select Tools**

**Add Tools to Visual Basic**

**Advanced Options:**

**Save Default Values**

**Save the location of the VBX files**

**Configuration Information**

**Program Requirements**

**Report Program "BUGS"**

Professional Toolkit



Control Center

## How to Select Tools to Add

The **Professional Toolkit Control Center** was designed to use the "standard" Windows™ check box to select the Microsoft® Professional Toolkit Custom Controls for addition. A checked box represents a control designated to be added to the Visual Basic™ toolbox ( the actual addition occurs as a separate routine, see How to Add Tools to Visual Basic for detail).

The controls can be selected using any combination of three methods:

- **Individually** - just "*point-and-shoot*". marking each tool to add with a checked box.
- **In functional groups**. The controls have been grouped into 4 common function categories. Each group can be selected by checking the ALL box pertaining to the complete group you wish to add.

**see the Overview for an image of the main screen**

- **All controls** can be selected from the EDIT option called "Select ALL tools". The accelerator keys of CTRL-A can also be used.

Once you have selected the controls that you wish to add, next step.....

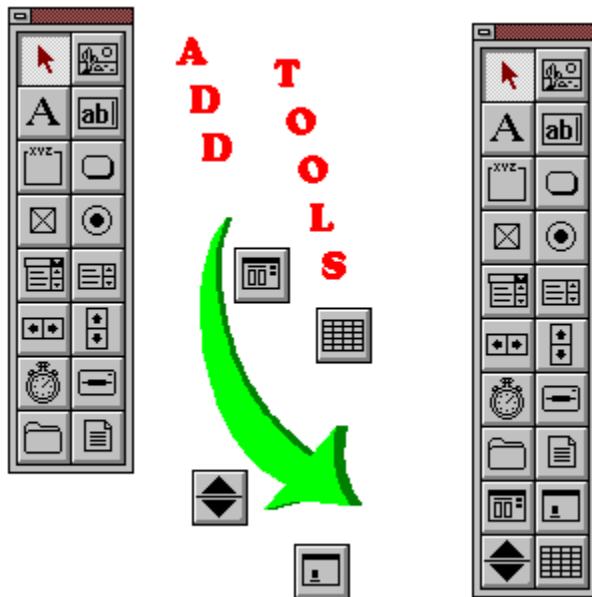
## Professional Toolkit



## Control Center

### How to Add Tools

Once you have selected the controls to add to the Visual Basic™ toolbox select the **ADD** option from the main menu. This will cause the program to start adding the controls to the current Visual Basic™ development project. An accelerator key combination of CTRL-I can also be used to activate the routine.



Please note that Visual Basic™, must already be running in memory, and that the controls that you are adding do not already exist in the toolbox. If either of these two situations occur an error will result. Take the appropriate action to correct the problem and try again.

## {bmr logoname.BMP}How to De-Select Tools

The **Professional Toolkit Control Center** was designed to use the "standard" Windows™ check box to select and de-select the Microsoft® Professional Toolkit Custom Controls for addition. A checked box represents a control designated to be added to the Visual Basic™ toolbox ( the actual addition occurs as a separate routine, see How to Add Tools to Visual Basic for detail).

The controls can be de-selected using any combination of these two methods:

- **Individually** - just "*point-and-shoot*". removing the check mark from any control previously selected

- **All controls** can be de-selected via the EDIT option called "Clear all Selections". The accelerator keys of CTRL-C can also be used.

see the Overview for an image of the main screen

Once you have selected the controls that you wish to add, next step.....

Professional Toolkit



Control Center

## Save Default Values

This advanced feature allows for the easy addition of your commonly used controls in any easily implemented manner.

After selecting the controls that you use most often, choose the File option then SETUP. This will display two more options, select "**Set as default options**". This selection of controls will then automatically be picked when you run the **Professional Toolkit Control Center**. CTRL-D will also act as the accelerator key for this feature.

To change your "defaults", just reset the combination of controls to your newly desired configuration and press CTRL-D to save the new values.

To configure the program so that it activates without any controls selected, just press CTRL-C and then CTRL-D. This will perform a clear and save, therefore initializing with no controls marked.

**Professional Toolkit**



**Control Center**

## Save the location of the VBX files

An important requirement for the **Professional Toolkit Control Center** is the knowledge of where the VBX files can be located.

When you first run the application, it will prompt you for the FULL pathname to the VBX files supplied in the Microsoft® Professional Toolkit for Visual Basic™. They are most likely either in the WINDOWS\SYSTEM sub-directory or a directory called TOOLKIT\VBX located below your Visual Basic™ sub-directory.

If for some reason your computer configuration or file placement change, an option has been added so that you can save the new location of the VBX file without having to re-install the program. To activate this option, select FILE, then SETUP. Two options will then become available, choose the "**VBX path ...**" option. Enter the correct full pathname and click on the save button. The application will now be able to correctly install your selected controls.

To resolve any trouble that you may be having, please double check the installation of the Microsoft® Professional Toolkit for Visual Basic™, or use the Windows™ File Manager to locate the \*.VBX files.

**Note: Improper declaration of the file location will severely hinder the execution of this utility.**



**Professional Toolkit**



**Control Center**

## **Program Requirements**

The requirements of the **Professional Toolkit Control Center** are very straight forward.

- 1) Windows™ 3.0 or higher.
- 2) Microsoft® Visual Basic™
- 3) Microsoft® Professional Toolkit for Visual Basic™

These must be properly installed and in working condition.

- 4) 200K of free disk space

Professional Toolkit



Control Center

## Configuration Information

This section is included for the times when a manual installation or re-building may have to occur. Hopefully never, but sometimes this information can be a real help.

Place the PROADD.exe and PROADD.hlp into a sub-directory. Make sure to have the THREEED.vbx and VBRUN100.dll files in the WINDOWS\SYSTEM sub-directory.

Execute PROADD and follow the instructions listed in "**Save the location of the VBX files**". Once you have saved the pathname, you will have successfully manually installed the application.

Professional Toolkit



Control Center

## Program History

Originally released: May 22, 1992 version 1.0

### Known Limitations:

1) WinHelp version 3.0 has a known problem concerning the "lookup boxes". You must keep the mouse button pressed in order to view the information. This causes the user not to have access to any second level references.

**Solution:** Upgrade to version 3.07 or greater of the WinHelp program.



## Copyright Acknowledgments

The Professional Toolkit Control Center is an original copyrighted work.

©1992 CompuTeach - All Rights Reserved

Microsoft ® Visual Basic ™ and Windows ™ are the property of Microsoft Corporation.

The Visual Basic™ Custom Controls brand names are trademarks or registered trademarks of their respective holders.

Other product and brand names are trademarks or registered trademarks of their respective holders.

{bmr logoname.BMP}

{bmc howhelp.BMP}

Professional Toolkit



Control Center

## Order Form

**Instructions:** This order form is included for additional orders, as an automated order processing system is available under the **FILE** option on un-registered programs. To use this form select **PRINT Topic** from the Help Menu, and then complete the printed form.

### Order Form - Professional Toolkit Control Center

=====

NAME/CONTACT: \_\_\_\_\_

ADDRESS: \_\_\_\_\_

\_\_\_\_\_

\_\_\_\_\_

TELEPHONE: \_\_\_\_\_

FAX: \_\_\_\_\_

=====

Number of Licenses: \_\_\_\_\_ at \$ 8.00 USD each

License Charges: \_\_\_\_\_

Shipping and Handling : \_\_\_\_\_ \$2.50

7.5% California State Tax: \_\_\_\_\_

=====

TOTAL :\$ \_\_\_\_\_ USD

=====

Mail this form and a check or money-order payable in US Dollars to:

Ed Obeda  
39149 Guardino Drive  
Suite 351  
Fremont, CA. 94538  
USA

*Please allow 2-4 weeks for delivery upon receipt of the order form*

=====

Please call for information on site licenses or volume discounts:  
1 (510) 713-0814

**THANK YOU FOR YOUR ORDER**

**Professional Toolkit**



**Control Center**

## **License Agreement**

The distribution and sale of this product are intended for the use of the original purchaser only. This product is only to be used as it was originally intended to be used. Lawful users of these programs are hereby licensed only to read the programs, from their media into memory of a computer, solely for the purpose of executing the programs on one machine at a time.

Duplicating or copying for other than backup purposes, or selling or otherwise distributing these products is a violation of the law and this agreement.

### **DISCLAIMER**

THIS PROGRAM AND DOCUMENTATION ( the "*PROGRAM* ") IS PROVIDED "AS IS" WITHOUT REPRESENTATION OR WARRANTY OF ANY KIND, EITHER EXPRESS OR IMPLIED, INCLUDING WITHOUT LIMITATION, ANY REPRESENTATIONS OR ENDORSEMENTS REGARDING THE USE OF, THE RESULTS OF, OR PERFORMANCE OF THE PROGRAM OR APPLICATION, ITS APPROPRIATENESS, ACCURACY, RELIABILITY, OR CURRENTNESS. THE ENTIRE RISK AS TO THE USE OF THIS PROGRAM IS ASSUMED BY THE USER. IN NO EVENT WILL THE CREATORS OR DISTRIBUTORS OF THE PROGRAM BE LIABLE FOR TORT OR ANY DAMAGES, INCIDENTAL OR CONSEQUENTIAL, DIRECT, INDIRECT, RESULTING FROM ANY DEFECT IN THE PROGRAM, EVEN IF THEY HAVE BEEN ADVISED OF THE POSSIBILITY OF SUCH DAMAGES. THIS DISCLAIMER SHALL SUPERSEDE ANY VERBAL OR WRITTEN STATEMENT TO THE CONTRARY. SOME STATES OR COUNTRIES MAY NOT ALLOW THIS DISCLAIMER SO THIS LANGUAGE MAY NOT APPLY TO YOU. IN SUCH CASE, OUR LIABILITY SHALL BE LIMITED TO THE REFUND OF THE PURCHASE PRICE OF THE PROGRAM.

**IF YOU DO NOT ACCEPT THESE TERMS YOU MUST CEASE AND DESIST USING THIS PRODUCT.**

## **LICENSE AGREEMENT**

**Professional Toolkit Control Center** and **electronic documentation** ( the "*Software*" ) are copyrighted 1992 by CompuTeach, and are protected by United States Copyright Law and International Treaty provisions. All rights are reserved. The ORIGINAL PURCHASER ("*You*") is granted a LICENSE to use the Software only, subject to the following restriction and limitations.

1) New users have a 30 day evaluation period, after which they must either:

a) Purchase the Software

-- or --



b) Destroy all copies, including all documentation and compressed versions of the Software.

2) The license is to the original purchaser only, and is not transferable without the written permission of CompuTeach.

3) You have the non-exclusive right to use any enclosed program only on a single computer at a time. You may load the program into your computers temporary memory (RAM). You may physically transfer the program from one Computer to another, provided that the program is used on only one computer at a time.

4). Back-ups: You may make copies of the Software solely for back-up purposes. You must reproduce and include any copyright notices on the back-up copy.

5) You may not engage in, nor permit third parties to engage in, any of the following:

- a) Providing or permitting the use of or disclosing the Software to third parties
- b) Provide use of the Software in any multi-user environments where more than one user has access and use of the Software at any one period of time.
- c) Making alterations, translations or copies of any kind in the Software or documentation ( except as specifically permitted in the license).
- d) Attempting to disassemble, decompile, or reverse engineer the Software in any way.
- e) Granting sub-licenses, lease or other rights in the Software to others.

6) Terms - This license is effective until terminated. You may terminate it by destroying the program, the documentation and copies thereof. This license will also terminate if you fail to comply with any terms or conditions of this agreement. You agree upon such termination to destroy all copies of the program and of the documentation.

7) CompuTeach reserves the right to make any changes to the Software at any time without notice.

CompuTeach reserves the right to terminate this license if there is a violation of its terms or default of the Original Purchaser. Upon termination for any reason, all copies of the Software must be immediately destroyed, and the Original Purchaser shall be liable for any and all damages suffered as a result of the violation or default.

### **U.S. Government Restricted Rights**

The Software and Documentation are provided with RESTRICTED RIGHTS. Use, duplication, or disclosure by the U.S. Government is subject to restrictions set forth in subdivision (b)(3)(ii) of The Rights in Technical Data and Computer Software clause at 252.227.7013.

**This agreement shall be construed, interpreted and governed by the laws of the State of California, United States of America.**

## The shareware concept

**Professional Toolkit**



**Control Center**

## **The Shareware Concept**

Shareware is copyrighted software which is distributed by authors through bulletin boards, on-line services, disk vendors, and copies passed among friends. It is commercial software that you are allowed to try before you pay for it. This makes shareware the ultimate in money back guarantees.

Most money back guarantees work like this: you pay for the product and then have some period of time to try it out and see whether or not you like it. If you don't like it or find that it doesn't do that you need, you return it and you get your money back. Some software companies won't even let you try their product because in order to qualify for a refund, the diskette envelope must have an unbroken seal.

With Shareware you get to try it for a reasonable limited time (like 30 days), without spending a penny. You are able to use the software on your own system(s), in your own special work environment, with no sales people looking over your shoulder. If you decide not to continue using it, you throw it away and forget all about it. No paperwork, phone calls, or correspondence to waste your valuable time. If you do continue using it, then - and only then - do you pay for it.

Shareware is a distribution method, not a type of software. Shareware is produced by accomplished programmers, just like retail software. There is good and bad shareware, just as there is good and bad retail software. The primary difference between shareware and retail software is that with shareware you know if it's good or bad before you pay for it.

As a software user, you benefit because you get to use the software to determine whether it meets your needs before you pay for it, and authors benefit because they are able to get their products into your hands without the hundreds of thousands of dollars in expenses it takes to launch a traditional retail software product. There are many programs on the market today that would never have become available without the shareware marketing method.

The shareware system and the continued availability of quality shareware products depend on your willingness to register and pay for the shareware you use. It's the registration fees you pay which allow us to support and continue to develop our products. Please show your support for shareware by registering those programs you actually use and by passing them on to others.

**Shareware is kept alive by your support !**

**Professional Toolkit**



**Control Center**

## Ordering Information

The **Professional Toolkit Control Center** is offered as shareware and new users are granted a 30 day evaluation period. **Once this trial period is over, you have to make a decision, was the software useful and I will continue to use it OR it does not meet my requirements and I will erase all copies.**

If you have decided to continue to use the software, you will have to order a license. The unregistered versions have an automated system that is accessible via the NAGWARE screens or the FILE, ORDER option. Simply complete the on-line questionnaire and print the form. Once processed, by return mail or FAX your registration number will be supplied. When this number is entered all NAGWARE screens will be disabled and you will have the application creator's thanks.

If you need to register additional copies, a blank order form that can be manually filled-in is also available. Double click on "BLANK ORDER FORM" for more details.

### Related Topics:

[Blank Ordering Form](#), can be printed

[The Shareware concept](#)

Professional Toolkit



Control Center

## How to Report Program "BUGS"

**Instructions:** This "Bug" report form included to provide enough information to resolve your problems as quickly as possible. To use this form select **PRINT Topic** from the Help Menu, and then complete the printed form.

### BUG REPORT - Professional Toolkit Control Center

=====

NAME/CONTACT: \_\_\_\_\_

ADDRESS: \_\_\_\_\_

\_\_\_\_\_

\_\_\_\_\_

TELEPHONE: \_\_\_\_\_

FAX: \_\_\_\_\_

=====

Program version : \_\_\_\_\_ ( see the About Box )      DOS version: \_\_\_\_\_

Windows version: \_\_\_\_\_      Visual Basic version: \_\_\_\_\_

Microsoft Toolkit version: \_\_\_\_\_

#### Computer System Configuration Information:

Computer Class: PC/XT    AT    PS/2

CPU Type: 808x    - 80286    - 80386    - 80486      Speed: \_\_\_\_\_ Mhz

Fault Description : ( use back of paper if required ) \_\_\_\_\_

\_\_\_\_\_

\_\_\_\_\_

\_\_\_\_\_

=====

**Mail the completed form to:**

Ed Obeda  
39149 Guardino Drive  
Suite 351  
Fremont, CA. 94538  
USA

=====

**Looking forward to a quick solution,  
THANK YOU FOR YOUR ASSISTANCE**