

## Contents for Visual Basic Database Draw Program

Welcome to the [Visual Basic Database Draw](#) program, VBDBDRAW.

### Overviews

[What is VB DB Draw?](#)

[Getting Started with VB DB Draw](#) - basic instructions for using VB DB Draw

### VB DB DRAW Windows

[Opening VB DB Draw Window](#)

[Database Tables and Fields Window](#)

[Edit Generated Form Window](#)

### Dialog and Message Boxes

[Change Properties Dialog](#)

[Save Changes to Form Message Box](#)

[Save Generated Form Message Box](#)

[Replace Existing Form File Message Box](#)

[Register Program Dialog](#)

### Menu Commands

[File Menu Commands](#)

[Edit Menu Commands](#)

[Help Menu Commands](#)

[File Menu Commands on Sample Form](#)

### Misc.

[Keyboard Shortcut Keys](#)

[Registration](#)

[Order Form](#)

[Future Enhancements](#)

---

**Important** If you are using Access 2.0 databases with Visual Basic 3.0, you must have the Microsoft Visual Basic 3.0 -- Microsoft Access 2.0 Compatibility Layer installed.

---

## **What is VB DB Draw?**

VB DB Draw creates a Visual Basic form with a Data Control and bound controls that are bound to an Access database and table. You specify the database, the table, and the fields, and VB DB Draw does the rest of the work. After you have saved the form, you can add it to your own Visual Basic project. While in VB DB Draw, you can also make modifications to the form and controls : resize the form; move and rename the form and controls; change form and control captions.

## **Getting Started with VB DB Draw**

Here is how to use VB DB Draw to create a Visual Basic form with bound controls.

Open an Access Database file.

Choose a table from the database.

Choose the fields from the table that you want on your Visual Basic form.

Choose Generate Form from the Edit Menu. This creates and displays the form.

Change your new form's layout: resize or move form; move controls on the form.

Double click the form or any control to rename the form or control or to change the caption.

Close your new form.

Choose Save from the File Menu to save your new form.

In Visual Basic, Add the new form to your project.

**Visual Basic**

Microsoft Visual Basic for Windows release 3.0 or higher.

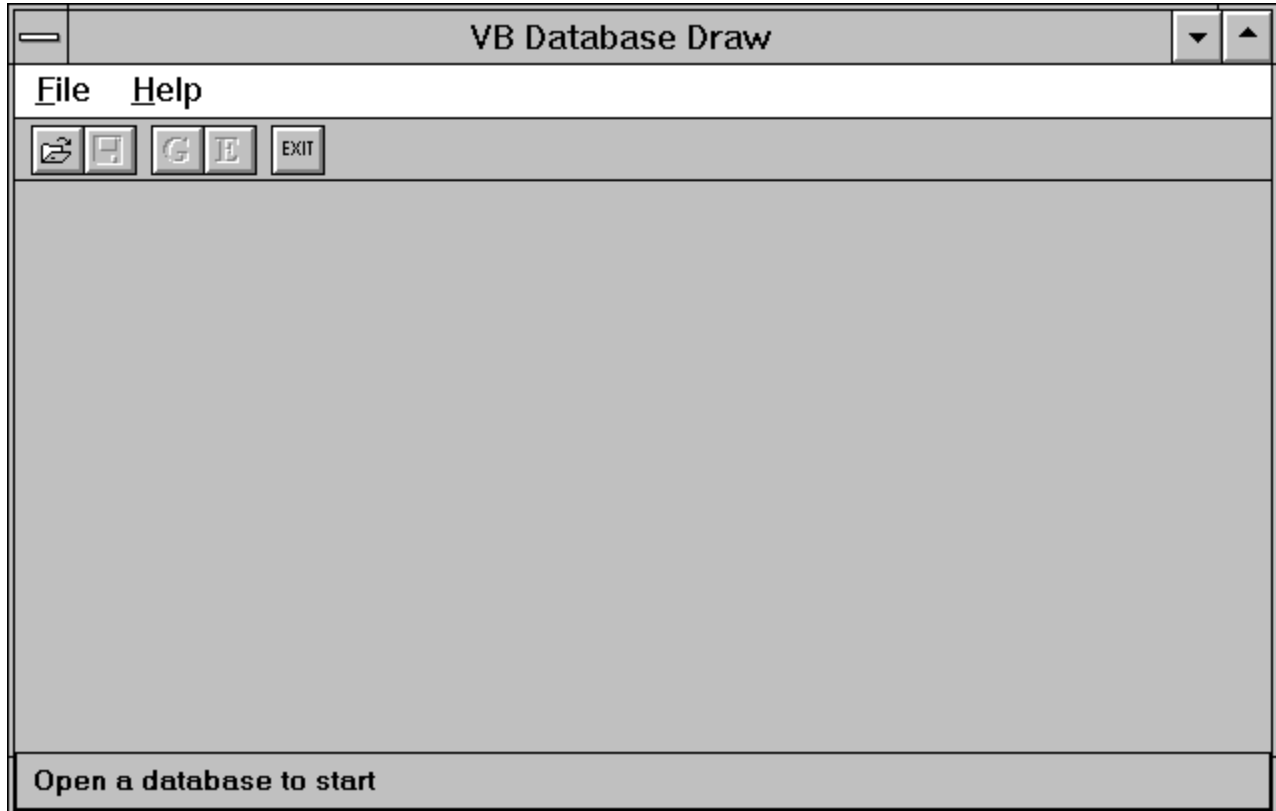
**Rock Ridge Computer Solutions**

You can contact me via email on CompuServe as 71041,1452 or the Internet at 71041.1452@compuserve.com or on Genie as S.HOWARD11. You can also write to me at the address on the [Order Form](#). - Steve Howard

## Opening VB DB Draw Window

[See Also](#)

This is the opening window that appears when you first start VB DB Draw. The only thing to do here is: Open a database; Exit the program; or Read online help. Click on parts of the window below for more information.



**See Also**

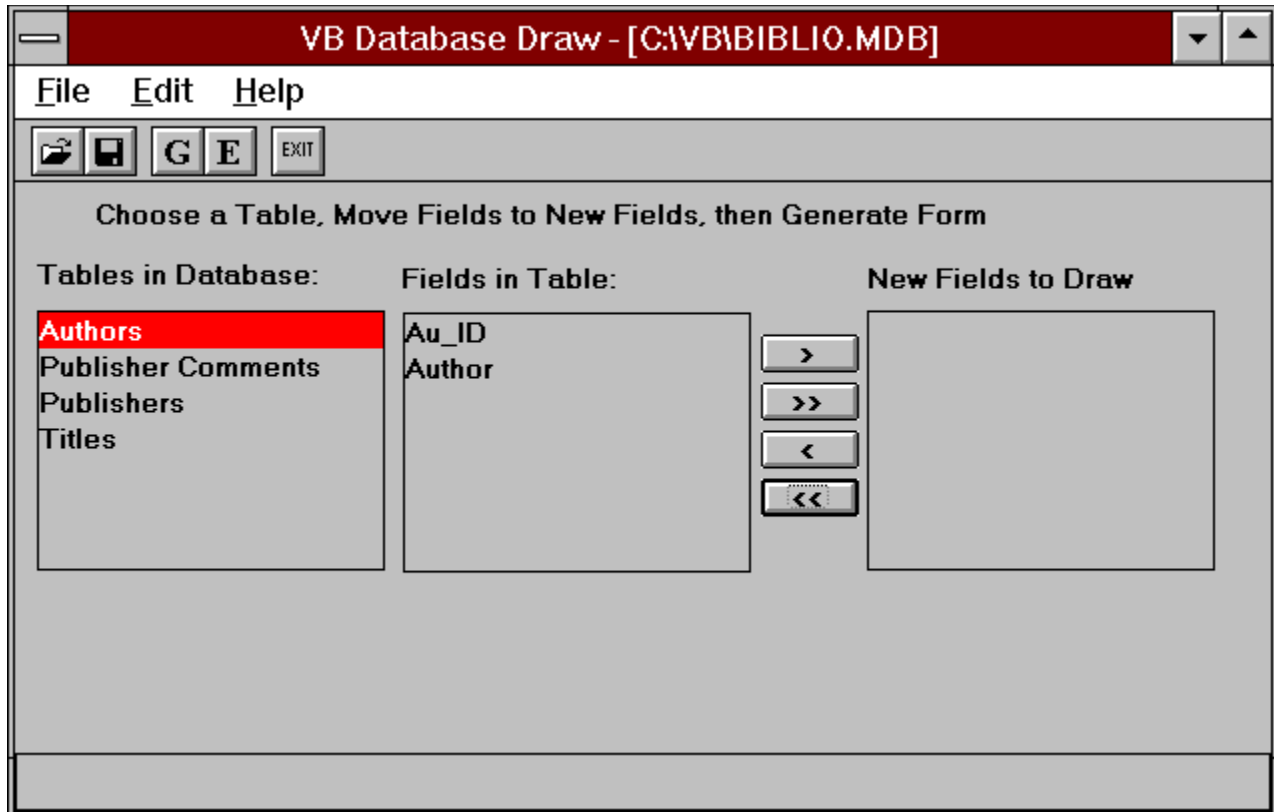
[File Menu](#)

[Help Menu](#)

## Database Tables and Fields Window

[See Also](#)

This is the main window for VB DB Draw. You choose the table and fields for which you want to generate a Visual Basic form that has bound controls. You then generate the form; edit the form and controls; and then save the form as a file to use in a Visual Basic project. Click on parts of the window below for more information.





**See Also**

[File Menu](#)

[Edit Menu](#)

[Help Menu](#)

## **File Menu**

### **Open Database**

Open an Access database. After the database is opened, the tables in the database are displayed so that you may chose one to generate a Visual Basic form from.

### **Save Form**

Save the Visual Basic form that you have generated as a Visual Basic text file. After the form is saved, you can add it to a Visual Basic project.

### **Save Form As**

Save the Visual Basic form with a new name.

### **Exit**

Stop executing VB DB Draw.

## **Edit Menu**

### **Generate Form**

After you have chosen a database table and fields, this will create a Visual Basic form with a Data control that points to the database and the table. It creates bound controls that are bound to the fields that you have chosen. After the form is generated, the form is displayed so that you can change some of the properties of the form and the controls.

### **Edit Generated Form**

Display the generated form so that you can change some of the properties of the form and the controls.

## **Help Menu**

### **Contents**

Display the Contents of the help file.

### **Search For Help On**

Open the Search dialog for the help file.

### **About**

Display version and copyright information about VB DB Draw.

### **Register Program**

Allows you to register your copy of VB DB Draw. See [Register Program Dialog](#) for more information.

## **Edit Generated Form File Menu**

### **Exit And Save Changes**

Save any changes that you have made to the properties of the generated form or controls. You will be returned to the Database Tables and Fields window.

### **Cancel Changes**

Discard any changes that you have made to the properties of the generated form or controls. You will be returned to the Database Tables and Fields window.

## Edit Generated Form Window

[See Also](#)

Allows you to change the layout of the generated Visual Basic form. You can also change some of the properties of the form or of the controls on the form. Click on parts of the window below for more information.

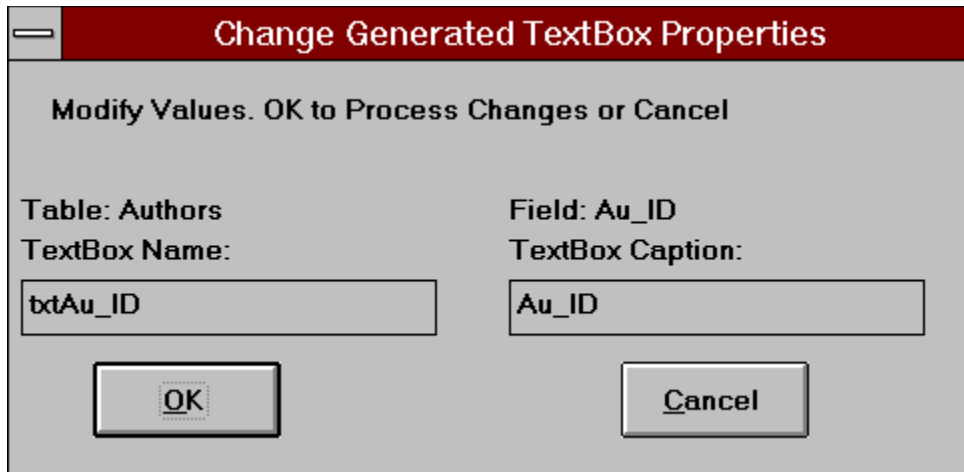
The image shows a window titled "VB Database DRAW: Display Table Authors". The window has a menu bar with "File" and "Help". Below the menu bar is a toolbar with four buttons: a left arrow, a double left arrow, the text "Authors", a double right arrow, and a right arrow. Below the toolbar are two labels, "Au\_ID:" and "Author:", followed by two text boxes. The first text box contains the text "Au\_ID" and the second text box contains the text "Author". At the bottom of the window is a status bar with the text "Drag controls to move. Double click controls/form to change properties."

**See Also**

[Change Visual Basic Control Properties](#)

## Change Visual Basic Control Properties Dialog

Allows you to change the properties of your generated Visual Basic form or the Visual Basic controls on the form. Click on parts of the dialog below for more information. You get to this dialog from the [Edit Generated Form Window](#)



The dialog box has a title bar with a red background and the text "Change Generated TextBox Properties". Below the title bar is a message: "Modify Values. OK to Process Changes or Cancel". The dialog is divided into two columns. The left column is labeled "Table: Authors" and "TextBox Name:", with a text box containing "txtAu\_ID". The right column is labeled "Field: Au\_ID" and "TextBox Caption:", with a text box containing "Au\_ID". At the bottom, there are two buttons: "OK" and "Cancel".

Table: Authors	Field: Au_ID
TextBox Name: txtAu_ID	TextBox Caption: Au_ID

OK Cancel



## Keyboard Shortcuts

Here are the keyboard shortcut or accelerator keys for VB DB Draw.

<b>Ctrl+O</b>	File Open Database
<b>Ctrl+S</b>	File Save Form
<b>Ctrl+A</b>	File Save Form As
<b>Ctrl+F4</b>	File Exit
<b>Ctrl+G</b>	Edit Generate Form
<b>Ctrl+E</b>	Edit Generated Form
<b>F1</b>	Context Sensitive Help throughout program

## **VB DB Draw Registration and License**

VB DB Draw is distributed as Shareware. Shareware allows you the opportunity of trying out software before you put out your hard earned cash. To register your copy of VB DB Draw, see the [order form](#). After you receive your registration information, choose [Register](#) from the Help Menu.

### **License to evaluate VB DB Draw**

You are granted a license from [Rock Ridge Computer Solutions](#) to try VB DB Draw for a period of 30 days to see if the program is useful to you. At the end of that 30 day period, you must either register your copy of VB DB Draw or stop using the program.

During the evaluation period, you will see the About Box for VB DB Draw, which you must dismiss before you can proceed with using the program. This is a minor annoyance during evaluation that will go away when you register your copy of VB DB Draw. It does not affect the operation of the program

You may: make as many copies of the Shareware version of this software and documentation as you wish; give exact copies of the original Shareware version to anyone; and distribute the Shareware version of the software and documentation in its unmodified form via electronic means. There is no charge for any of the above.

### **Reasons to register**

When you register your copy of VB DB Draw, you will be given a registration number. This will remove About Box when the program is started. It will also entitle you to free future updates to VB DB Draw as they become available on CompuServe and Genie. If you want updates mailed to you, there will be a postage and handling charge of \$3.00. per update. I strongly suggest electronic updates to the program.

One registered copy of VB DB Draw may be used by a single person who uses the software personally on one or more computers. This means that you can use this software at work and at home when you register a single copy.

## Order Form

Fill out this form and send with a check to the address below. Make checks payable to **Rock Ridge Computer Solutions**. Your registration information will be sent to you via electronic mail or via U.S. mail if you do not have an email address. [More information on registration](#). **To print this order form, click on Print Topic in the File menu.**

Rock Ridge Computer Solutions  
P.O. Box 412  
Belvidere, NJ 07823

VB DB Draw 1.0 \_\_\_\_\_ copies @ \$10 each = \_\_\_\_\_

N.J. residents add 6% sales tax \$0.60 per copy = \_\_\_\_\_

Total Payment \$ \_\_\_\_\_

Name: \_\_\_\_\_

Company: \_\_\_\_\_

Address: \_\_\_\_\_

City, State, Zip: \_\_\_\_\_

Day Phone: \_\_\_\_\_

Email Address: \_\_\_\_\_

Date: \_\_\_\_\_

Where did you hear about VB DB Draw? \_\_\_\_\_

Comments: \_\_\_\_\_

**Table Name**

Database table for which you are creating the form.

**Field Name**

Field in the database table that the Visual Basic control that you are changing is bound to.

**Control Name**

Name of the Visual Basic control for which you are changing properties.

**Control Caption**

Caption for the Visual Basic control for which you are changing properties.

**OK Button**

Choose the OK button to save the changes you have made to the Visual Basic control's properties.



**Cancel Button**

Choose the Cancel button to undo the changes you have made to the Visual Basic control's properties.

**Tables in Database**

This is the list of tables in the database that you opened. Choose the table for which you want to generate a Visual Basic form. The Data control's RecordSource property on the generated form will be set to the table you choose. The Data control's DatabaseName property will be set to the database that the table is part of.

**Fields in Table**

This is the list of fields in the table for which you have chosen to generate a Visual Basic form. Choose the fields that you want on the form. As each field is chosen, it is moved from this list to the next list, New Fields to Draw. You can choose a field in a number of ways: Double click a field; Press the Enter key while field is highlighted; Use the  $\geq$  or  $\geq\geq$  buttons.

**Fields to Draw on Visual Basic Form**

This is the list of fields that will be drawn on the Visual Basic form that you generate. You must first choose a database table from the list of Tables in Database and then the fields to be drawn from the list of Fields in Table. You can remove fields from this list in several ways: Double click a field; Press the Enter key while field is highlighted; Use the  $\leq$  or  $\leq\leq$  buttons.

**Add Field to Form Button**

This button moves the fields that are currently highlighted from the list of Fields in Table to the list of New Fields to Draw. Those fields will be drawn on the Visual Basic form that is generated.

**Add All Fields to Form Button**

This button moves all the fields from the list of Fields in Table to list of New Fields to Draw. Those fields will be drawn on the Visual Basic form that is generated.

**Remove Field from Form Button**

This button moves the fields that are currently highlighted from the list of New Fields to Draw to the list of Fields in Table. Those fields will **not** be drawn on the Visual Basic form that is generated.

### **Remove All Fields from Form Button**

This button moves all the fields from the list of New Fields to Draw to the list of Fields in Table. Those fields will **not** be drawn on the Visual Basic form that is generated.



**Open Database Button**

This toolbar button performs the same function as choosing Open Database from the File Menu. Opens an Access database.

**Save Generated Form Button**

This toolbar button performs the same function as choosing Save Form from the File Menu. Saves the Visual Basic form that you have generated with VB DB Draw.

**Generate Visual Basic Form**

This toolbar button performs the same function as choosing Generate Form from the Edit Menu. A Visual Basic form based upon the table and fields that you have chosen is created.

**Edit Generated Form**

This toolbar button performs the same function as choosing Edit Generated Form from the Edit Menu. A sample form of the form you have generated is displayed. This sample form allows you to change certain properties of the generated form and controls.

**Exit Program**

This toolbar button performs the same function as choosing Exit from the File Menu. VB DB Draw will exit.

**File Menu**

This is the File Menu. It allows you to Open a database; Save a generated form; and Exit VB DB Draw.

**Edit Menu**

This is the Edit Menu. It allows you to Generate a Visual Basic form or Modify the generated form and controls.

**Help Menu**

This is the Help Menu. It allows you to look at Help for VB DB Draw.



### **File Menu for Editing Generated Form**

This is the File Menu inuse while editing the generated form. It allows you to Save or Cancel your changes to the generated form and controls.

**Data Control RecordSource Property**

This property specifies the underlying table, SQL statement, or QueryDef for a data control. It is read/write at both design time and run time. See Visual Basic Help or the Visual Basic documentation for more information.

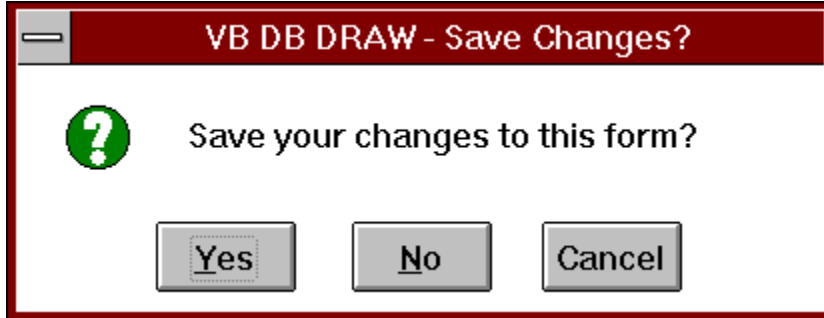
**Data Control DatabaseName Property**

Determines the name and location of the source of data for a data control. Read/write at both design time and run time. See Visual Basic Help or the Visual Basic documentation for more information.

## Save Changes to Form? Message Box

[See Also](#)

This message box appears when you have made changes to the generated form and then close the form without saving the changes. You can choose to save or undo the changes or not exit from editing the form. Click on parts of the message box below for more information.



**See Also**

[Edit Generated Form Window](#)

[Database Tables and Fields Window](#)

**Save Changes? Yes Button**

Choose the Yes button to save the changes you have made to the generated form and controls. You will then be returned to the Database Tables and Fields window where you can save your form in a file.

**Save Changes? No Button**

Choose the No button to return to the Database Tables and Fields window without saving the changes you have made to the generated form and controls. You might choose this option because you have really made a mess of the form and want to go back to the state it was in before you made your changes.

**Save Changes? Cancel Button**

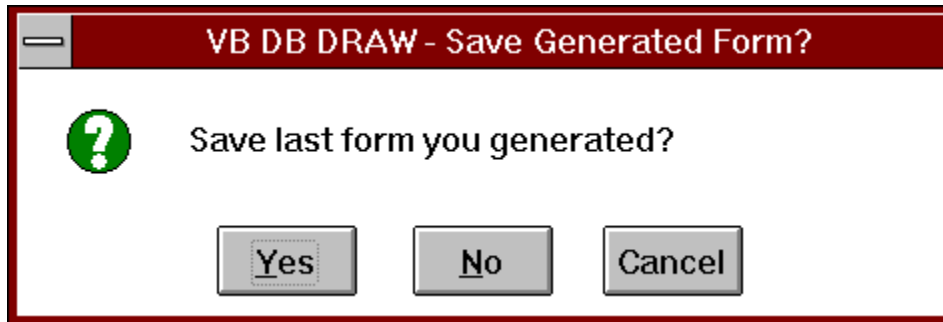
Choose the Cancel button to not exit back to the Database Tables and Fields window. You will stay in the editing window as if you had not chosen to exit.



## Save Generated Form Message Box

[See Also](#)

If you do not save a form that you have generated and then generate another form or exit VB DB Draw, this message box appears to ask what you want to do with your previously generated form. This acts as a reminder so that you do not accidentally lose work because you forget to save your form. You can choose to save or not save the form or to cancel the operation that you just choose. Click on parts of the message box below for more information.



## See Also

[File Menu](#)

**Save Generated Form? Yes Button**

Choose the Yes button to save your generated form before proceeding with the operation that you just choose. Choosing Yes will invoke the File Save Form menu option. See [File Menu](#) for more information.

**Save Generated Form? No Button**

Choose the No button to throw away the generated form that you had been working on. VB DB Draw will proceed with the operation you had just chosen.

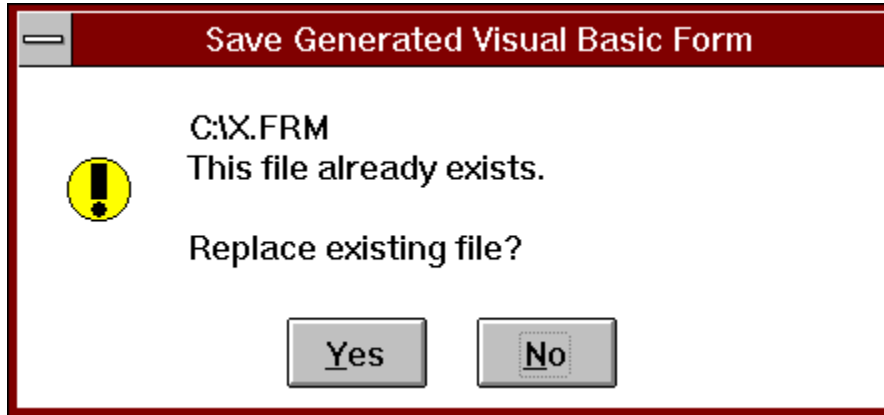
**Save Generated Form? Cancel Button**

Choose the Cancel button to not do anything. The operation that you just chose will be ignored.

## Replace Existing Form File? Message Box

[See Also](#)

This message box appears when you try to save your generated form with the same name as an existing file. You can choose to overwrite or not to overwrite the existing file. Click on parts of the message box below for more information.



## See Also

[File Menu](#)

**Replace File? Yes Button**

Choose the Yes button to replace the existing file with the file you have generated.



**Replace File? No Button**

Choose the No button to not replace the existing file. You will be returned to the Save File dialog to choose a new name for your form file.

**Change Form's Properties**

The form can be resized or moved. Double click on the form to change the form's Name or Caption properties.

**Drag and Drop**

Position the mouse cursor over a control. Press and hold the left mouse button. Move the mouse which will **Drag** the control about on the form. Release the left mouse button when the control is positioned where you want it. This **Drops** the control, moving it to the new position.

**Change Data Control**

The Data control can be moved on the form using drag and drop. Double click on the data control to change the Data control's Name or Caption properties.

**Change Text Control**

Text controls and other controls can be moved on the form using drag and drop. Double click on a control to change the control's Name or Caption properties. Pressing the Enter key in a text control does the same as double clicking with the mouse.

**Change Label Control**

Label controls can be moved on the form using drag and drop. Double click on the label control to change the label control's Name or Caption properties

## Future Enhancements to VB DB Draw

Here are future directions and enhancements that I plan for VB DB Draw.

Add options to give **you** more control of the Visual Basic forms that VB DB Draw generates.

Option to generate or not generate Labels for the database fields.

Set Length property on Visual Basic Text Boxes to the length of database field.

Use other Visual Basic controls that you specify for each database field, including custom controls.


Add support for more databases than Microsoft Access.

## Comments and suggestions

If you have any comments on VB DB Draw or suggestions on future enhancements please contact [Rock Ridge Computer Solutions](#). You can also write to me at the address on the [Order Form](#). I look forward to any comments or suggestions that you may have. - Steve Howard

## Register Program Dialog

Allows you to register your copy of VB DB Draw. You get to this dialog by choosing Register from the Help Menu. Enter the Registration Number that you received, along with your name and optionally your company name. This information will be displayed in the About Box for VB DB Draw. The registration number will be good for all future upgrades to VB DB Draw. If you do not have your registration number, you can cancel out of this dialog. Click on parts of the dialog below for more information.



The image shows a Windows-style dialog box titled "Register VB DB Draw Program". The title bar is blue with white text. Below the title bar, the dialog has a light gray background. At the top, it says "Enter Registration Number, your Name, and Your Company Name". Below this, there are three input fields. The first is labeled "Registration Number", the second "Name", and the third "Company Name". Each label is underlined. Below the input fields, there are three buttons: "OK", "Cancel", and "Help". Each button has its first letter underlined.

<u>R</u> egistration Number	<u>N</u> ame	<u>C</u> ompany Name
<input type="text"/>	<input type="text"/>	<input type="text"/>
<input type="button" value="OK"/>	<input type="button" value="Cancel"/>	<input type="button" value="Help"/>



**Registration Number**

Enter the registration number that you received in the mail after you sent in the Order Form for VB DB Draw. The number must be a valid registration number for this program. If the number you received is not valid, please contact Rock Ridge Computer Solutions for help.

**Your Name**

Enter your name. The name you enter will appear in the About Box for VB DB Draw.

**Company Name**

Enter your company 's name. It will appear in the About Box for VB DB Draw. This field is optional.

**Register Program OK Button**

Press Enter or click the OK button to process your registration. You should click the Cancel button if you do not want to register the program at this time.

**Register Program Cancel Button**

Press Esc or click the Cancel button to exit the Program Registration dialog without registering your copy of VB DB Draw.

**Register Program Help Button**

Press F1 or click the Help button to bring up the Help information for the Program Registration dialog.

