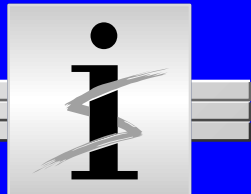




INTERSOLV®

Maintenance Workbench

**Moving Software Maintenance
into the New World**



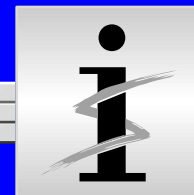
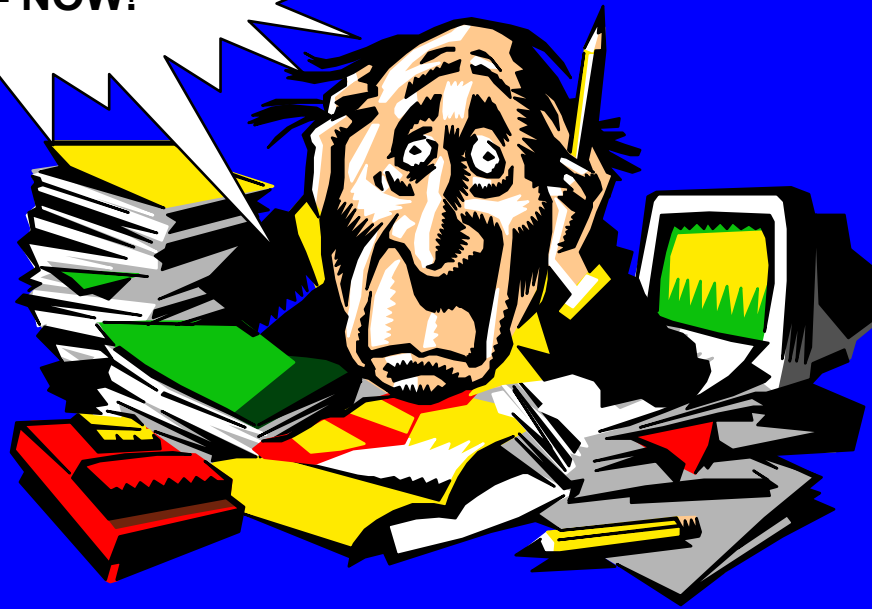


Hello. My name is Courtney. I'm your guide for this demonstration of INTERSOLV's **Maintenance Workbench**.

Please use your **left mouse button** to move forward and your **right mouse button** to move backward.

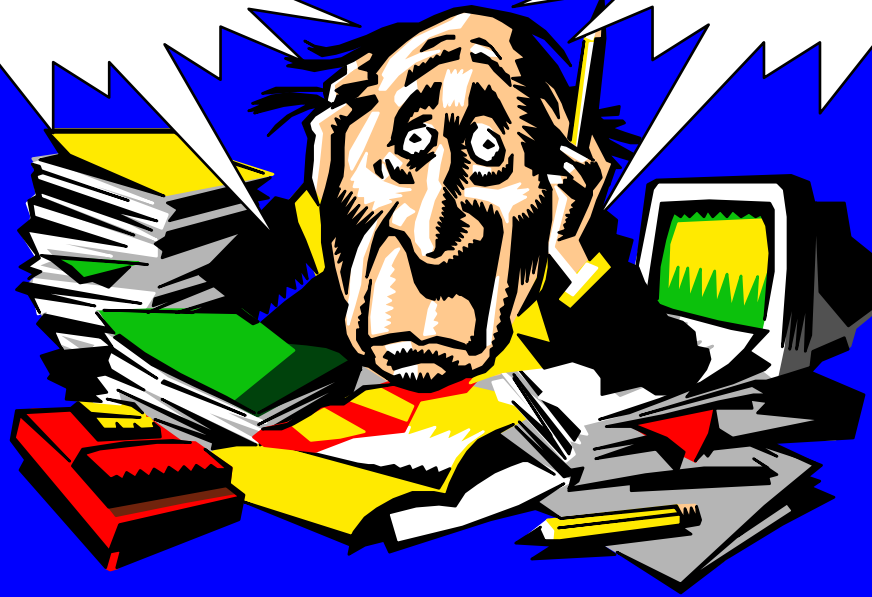


I want my library
scan - NOW!"



**I want my library
scan - NOW!"**

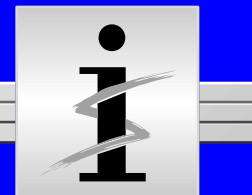
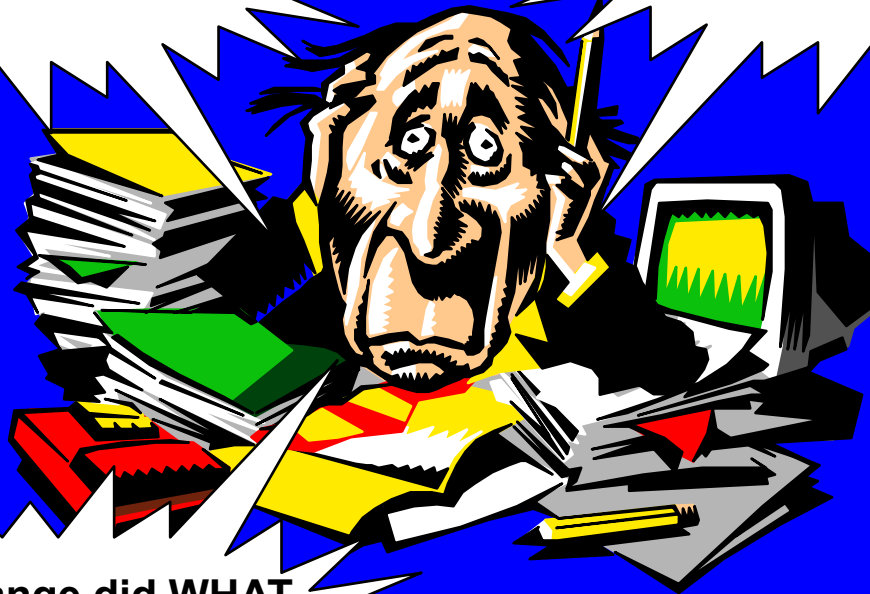
**"Where's my
source code listing?"**



**I want my library
scan - NOW!"**

**"Where's my
source code listing?"**

**"My change did WHAT
to the system?"**



**I want my library
scan - NOW!"**

**"Where's my
source code listing?"**

**"My change did WHAT
to the system?"**

**"I'm going to smash
my %#*&\$%!# beeper!"**



Maintaining legacy systems can be a real headache!

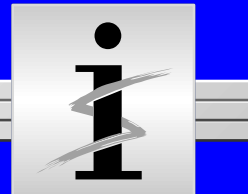
If you're still using legacy tools to maintain your legacy systems, INTERSOLV's Maintenance Workbench--**MWB** for short--can help you get rid of that beeper!

I want scan

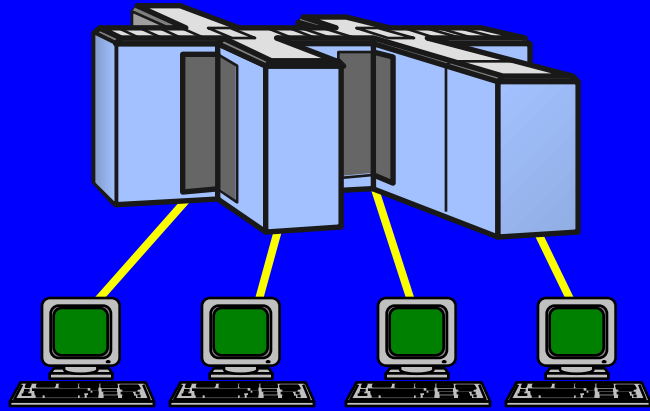
?"

ange did WHAT
e system?"

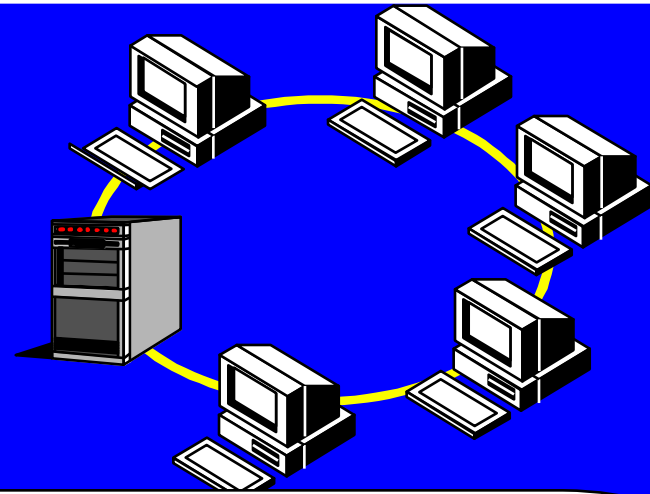
"I'm going to smash
my %#*&\$%!# beeper!"



3270 Maintenance



Client-Server Maintenance



MWB moves you into a **New World** of desktop maintenance where you have:

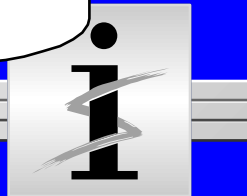
Interactive, priority processing for all;

Application-wide impact analysis;

On-line application documentation;

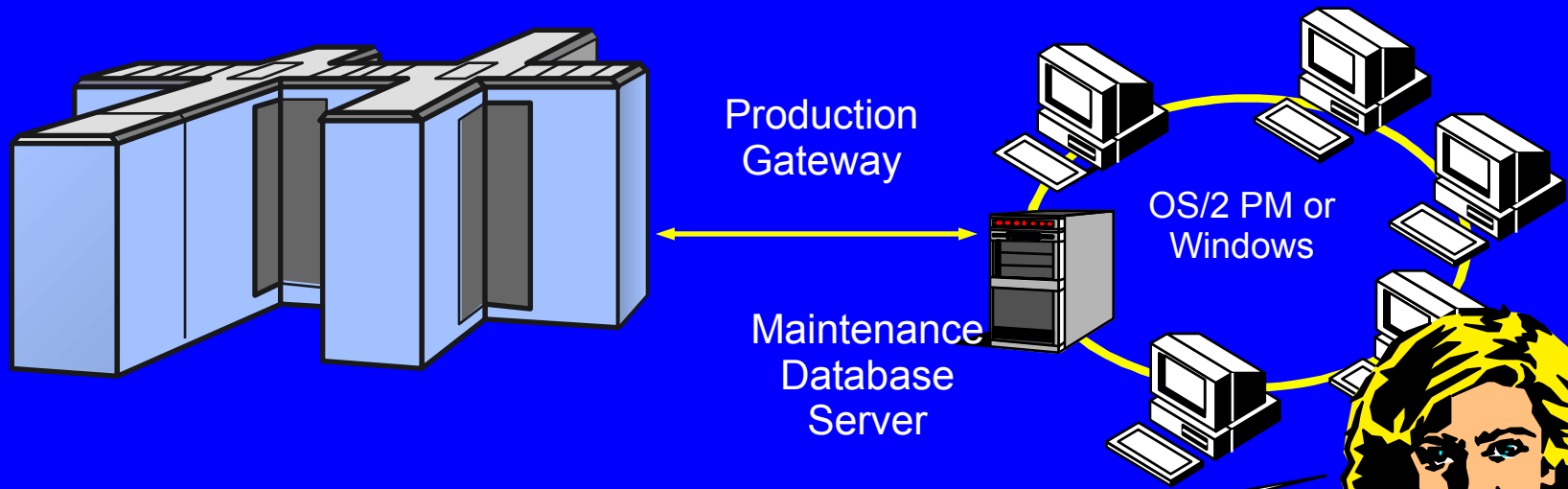
An **integrated desktop** for all your tools;

Team maintenance.



Production Environment

Maintenance Environment



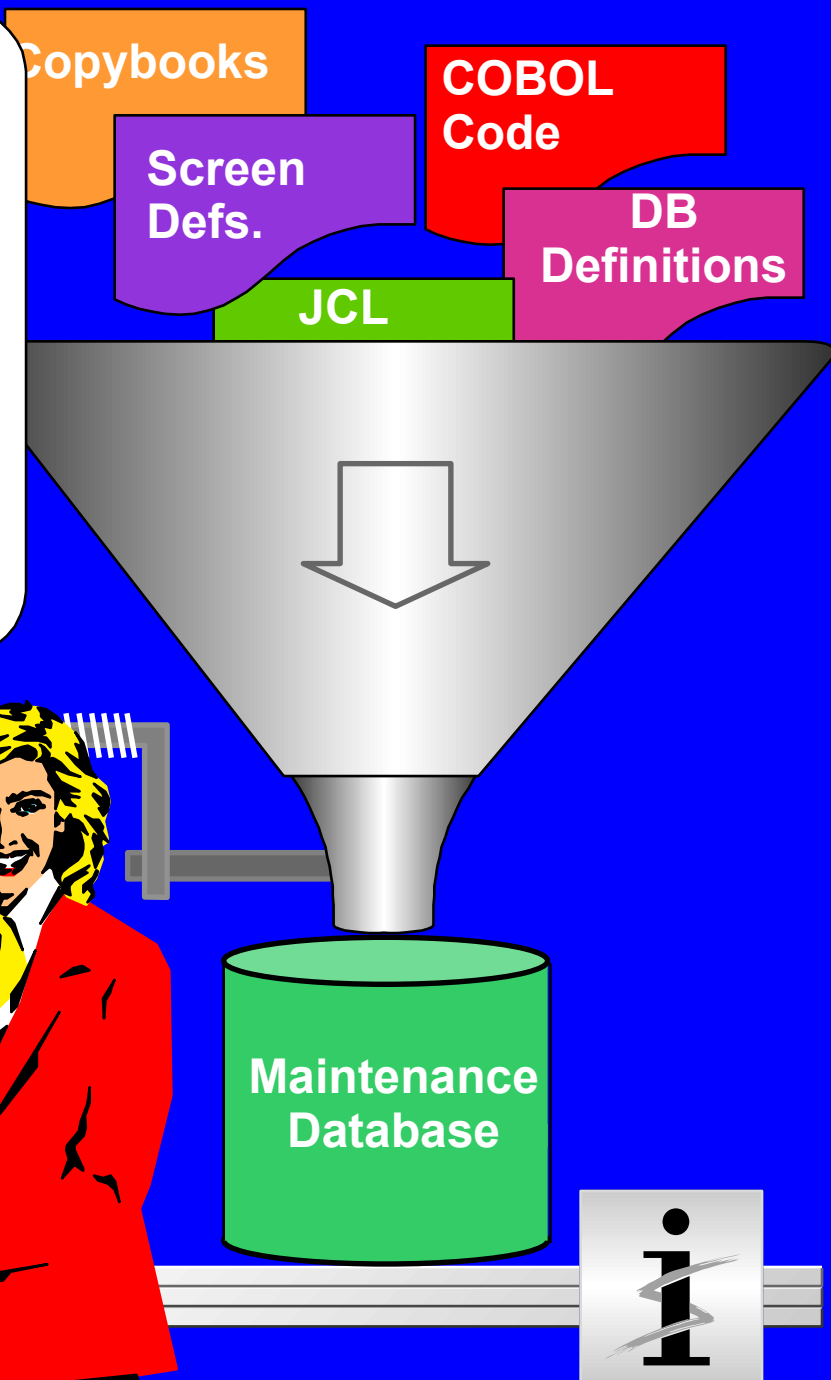
With MWB, maintenance activities are transferred to a client/server-based **desktop environment**. This environment includes:

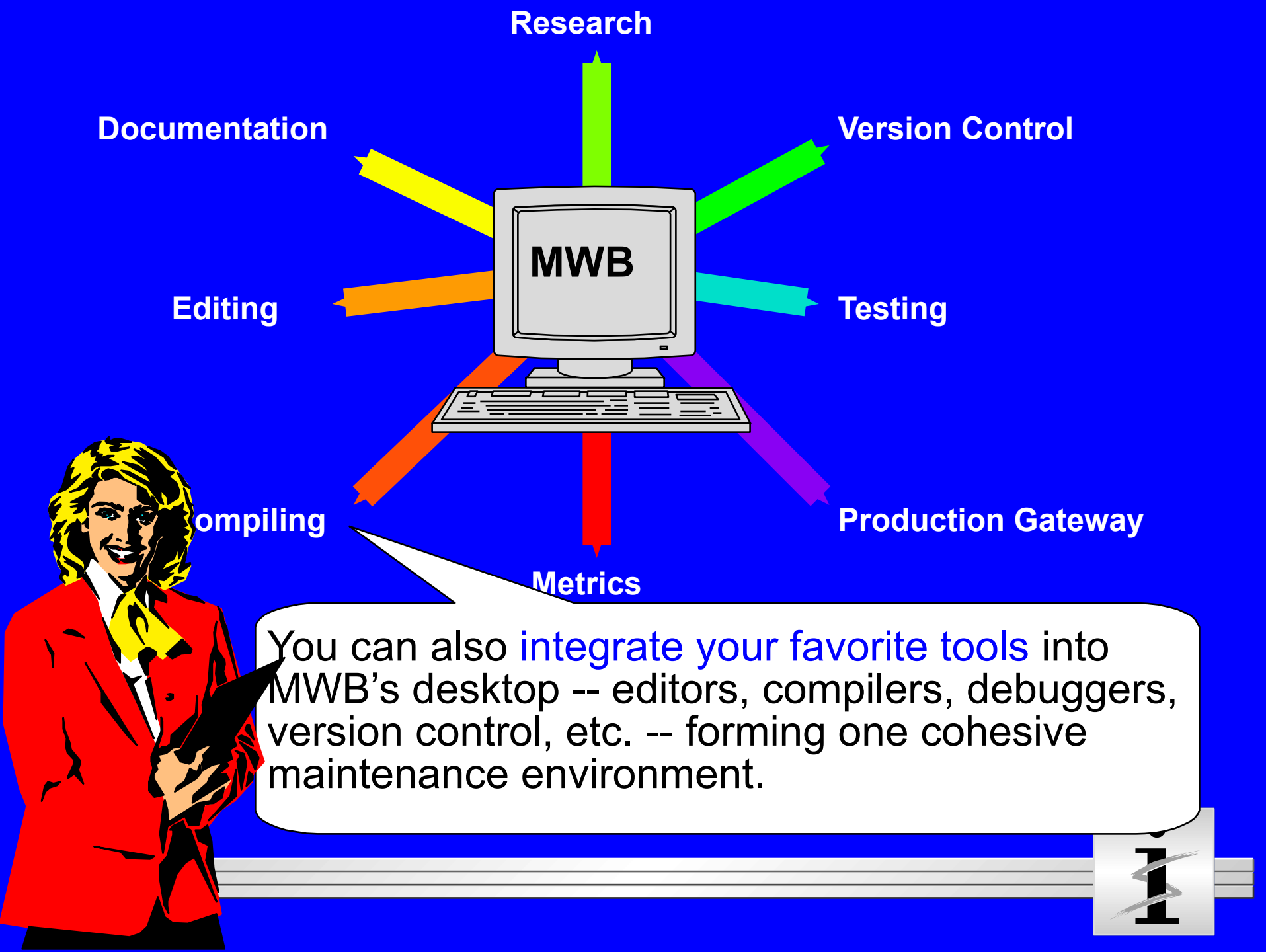
- a Production Gateway to keep source code in synch with the mainframe;
- an on-line, multi-user database server;
- LAN-connected clients -- where the real work gets done!

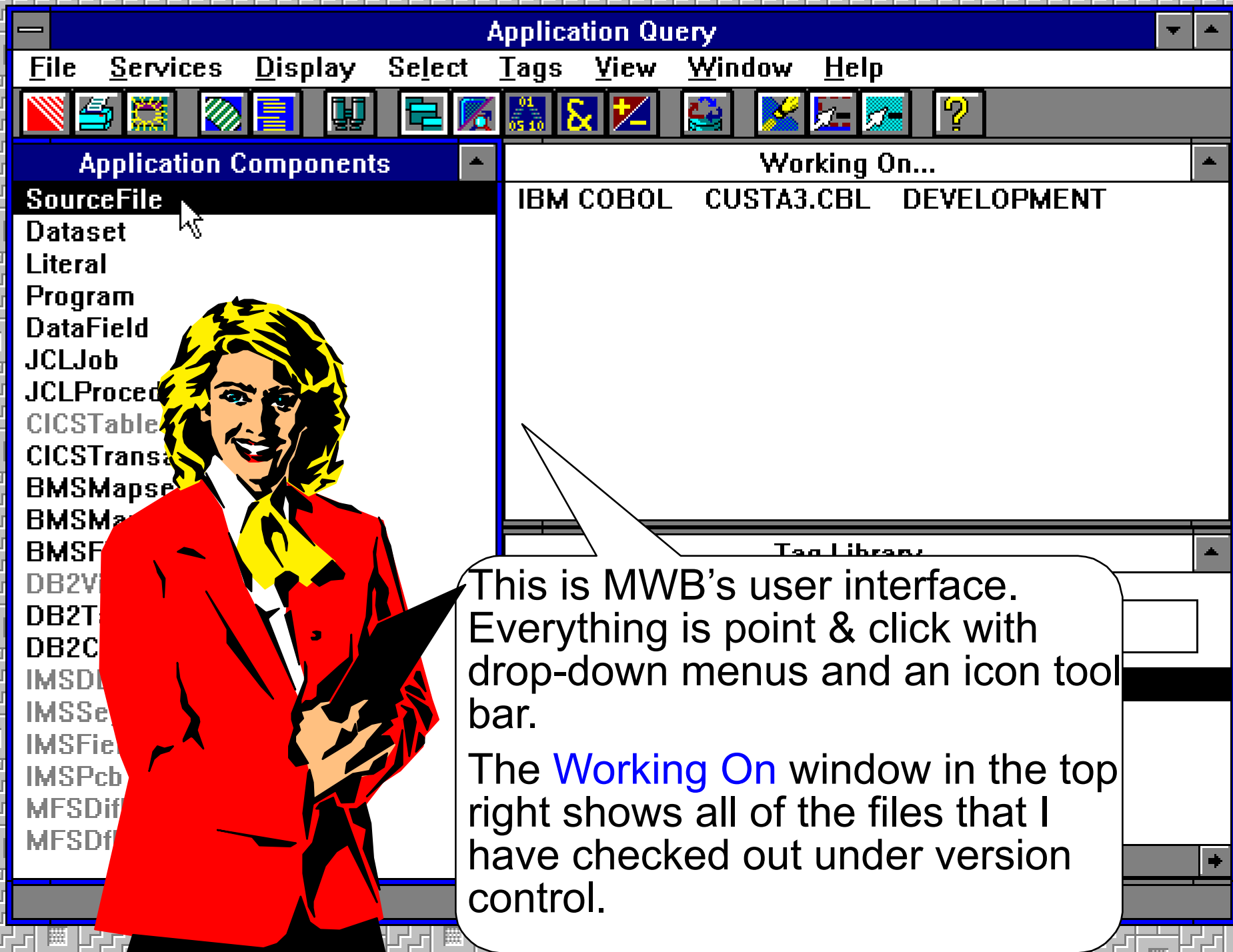
The **Maintenance Database** is the heart of MWB. It provides:

- Real-time, multi-user access;**
- Application-wide cross referencing;**
- On-line application documentation.**

It's kept up-to-date with INTERSOLV's PVCS Production Gateway.







The **Tag Library** lets you share captured application documentation within your work group.
We'll talk more about Tags later.

File Services Display S



Application Components

SourceFile

Dataset

Literal

Program

DataField

JCLJob

JCLProced

CICSTable

CICSTransa

BMSMapse

BMSMa

BMSF

DB2V

DB2T

DB2C

IMSD

IMSSe

IMSFie

IMSPcb

MFSDi

MFSDf

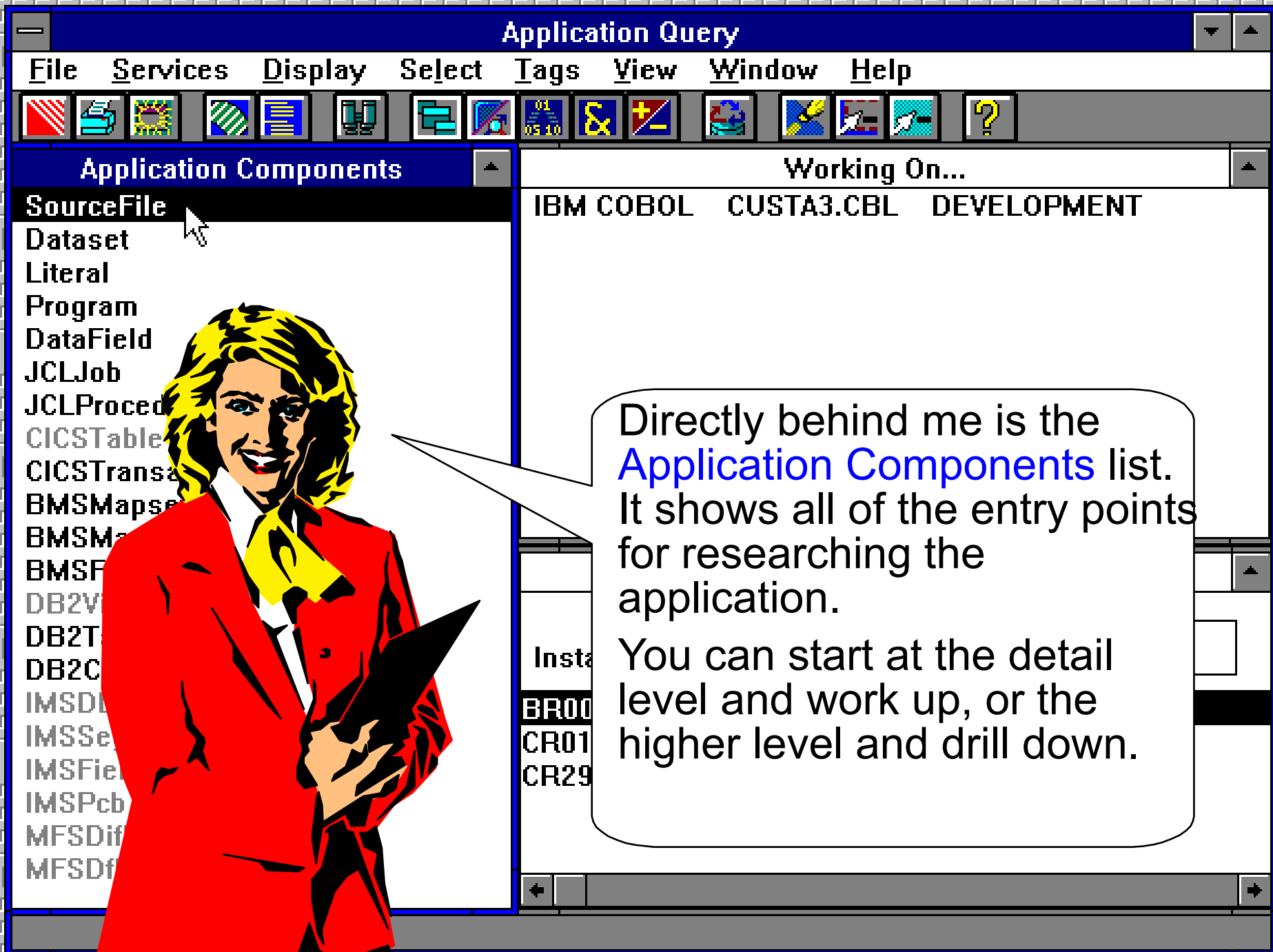
Tag Library

Instance Name:

BR001 BALANCE CALC

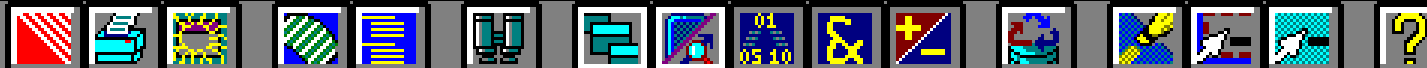
CR011293-1 CUSTOMER-ZIP SCREEN FIX

CR291193-3 CUSTOMER NUMBER



Application Query

File Services Display Select Tags View Window Help



Application Components

SourceFile

Dataset

Literal

Program

DataField

JCLJob

JCLProced

CICSTable

CICSTransa

BMSMapse

BMSM

BMSF

DB2V

DB2T

DB2C

IMSD

IMSSe

IMSFie

IMSPcb

MFSDi

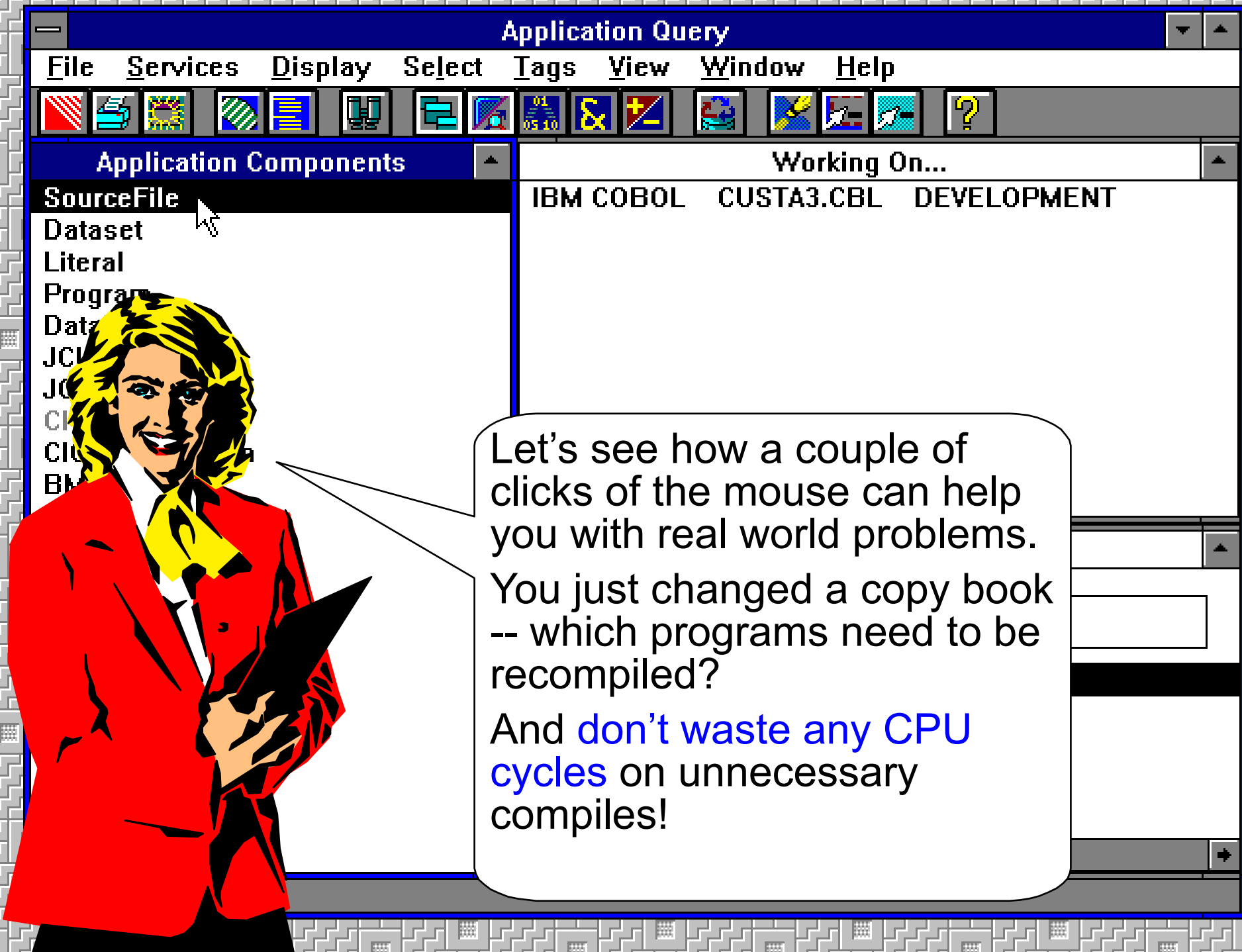
MFSDf

Working On...

IBM COBOL CUSTA3.CBL DEVELOPMENT

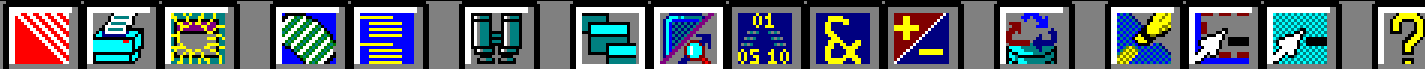
Directly behind me is the **Application Components** list. It shows all of the entry points for researching the application.

You can start at the detail level and work up, or the higher level and drill down.



Application Query

File Services Display Select Tags View Window Help



Application Components

SourceFile

Dataset

Literal

Program

Data

JCL

JCL

CICS

CICS

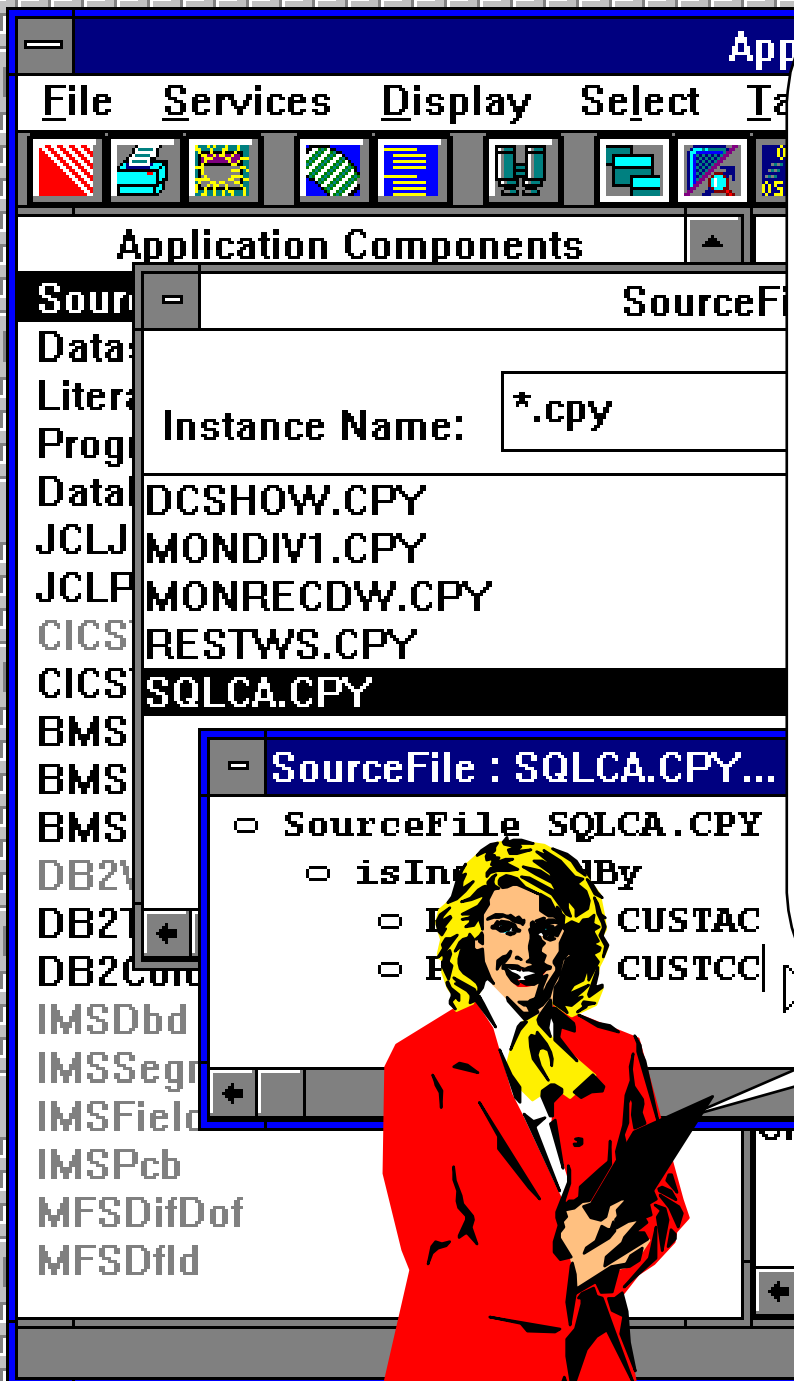
BMS

Working On...

IBM COBOL CUSTA3.CBL DEVELOPMENT

Let's see how a couple of clicks of the mouse can help you with real world problems. You just changed a copy book -- which programs need to be recompiled?

And **don't waste any CPU cycles** on unnecessary compiles!



MWB instantly provides a listing of **all** programs that need to be recompiled within the application.

MWB's true application-wide view also assures you that these are the **only** programs that need to be recompiled. This will **save you countless hours** as well as dramatically **reduce your use of expensive CPU cycles**.

And if you want to view the source code, just double click on one of the programs!

C
IER-ZIP SCREEN FIX
CRESTISS 3 CUSTOMER NUMBER

FileServicesDisplay

Application Components

Source

Data

Liter

Prog

Data

JCLJ

JCLP

CICS

CICS

BMS

BMS

BMS

DB2V

DB2T

DB2C

IMSDbd

IMSSeg

IMSField

IMSPcb

MFSDifDof

MFSDfld

SourceF

SourceFile

contains

Program

reads


receives

sends

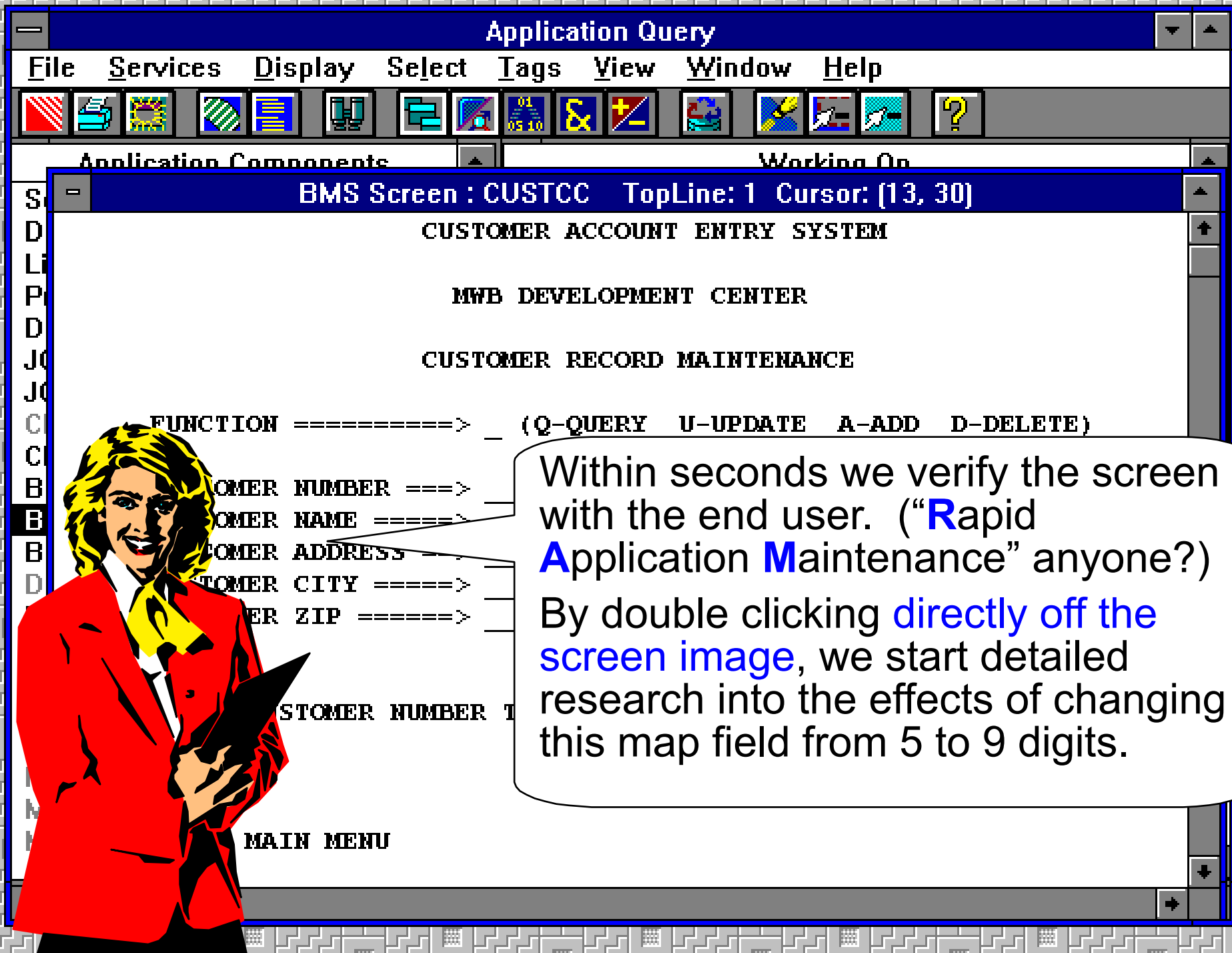
transfersTo

Let's look at another problem that really demonstrates MWB's extensive **navigating capabilities**.

We just put the Customer Information System back into production with 9 digit ZIP codes. An end user calls and says, "I was trying to put a new customer into the system and it wouldn't let me enter the 9 digit ZIP code. I *thought* you guys fixed that!"







Application Query

File Services Display Select Tags View Window Help

We quickly move from the map field to the program. Here we can **easily examine** the data declaration section as well as other places in the program where 'ZIP Code' is referenced or modified.

007 DFHDE (013,026),ATTRB=(UNPROT,BRT,FSET),LENGTH=005

CUSTCC-CUSTOMER-ZIP-OUTP
CUSTCC-CUSTOMER-ZIP-INPT
CUSTCC-CUSTOMER-ZIP

CUSTCC-CUSTOMER-ZIP TopLine: 1 Cursor: (3, 38)

CUSTCC.CBL

00237 15 CUSTCC-CUSTOMER-ZIP PIC X(5).

01371 MOVE CUSTOMER-ZIP TO CUSTCC-CUSTOMER-ZIP.

References

line 01348 MOVE CUSTCC-CUSTOMER-ZIP TO CUSTOMER-ZIP.

Application Query

File Services Display Select Tags View Window Help



Application Components

(CUSTCC)

CC\$.BMS

STCC

es

e 00037 CUST107 1

hasSymbolicField

- o DataField CUSTCC-CUSTOMER-ZIP-INPT
- o DataField CUSTCC-CUSTOMER-ZIP

In MWB's DataField window we find the program moves the ZIP code to the CUSTOMER-ZIP field. We can follow the path further by double clicking on CUSTOMER-ZIP.

, 49)

),LENGTH=005

DataField : CUSTCC-CUSTOMER-ZIP TopLine: 1 Cursor: (5, 61)

SourceFile CUSTCC.CBL

declares

Line 00237 15 CUSTCC-CUSTOMER-ZIP PIC X(5).

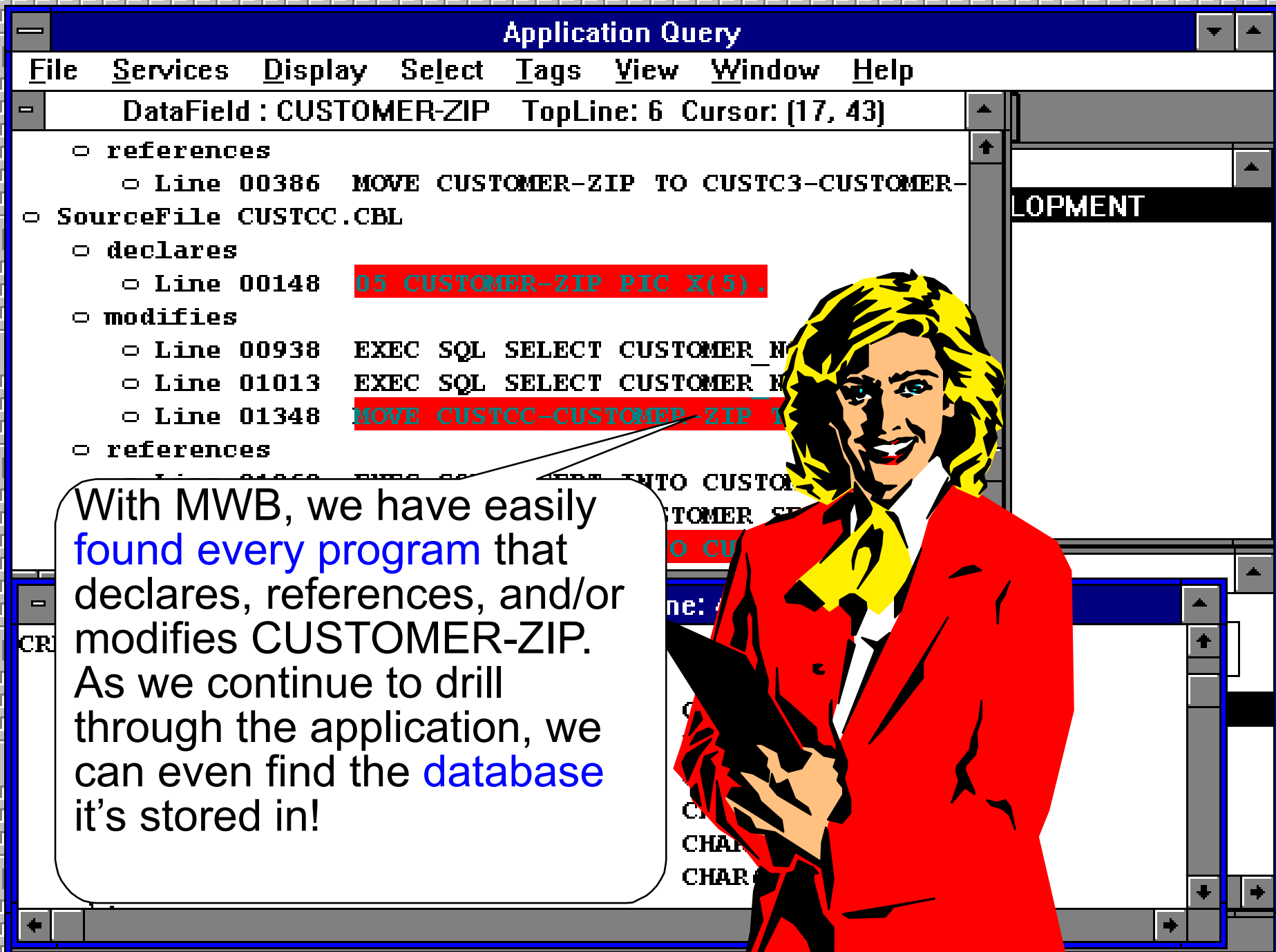
defines

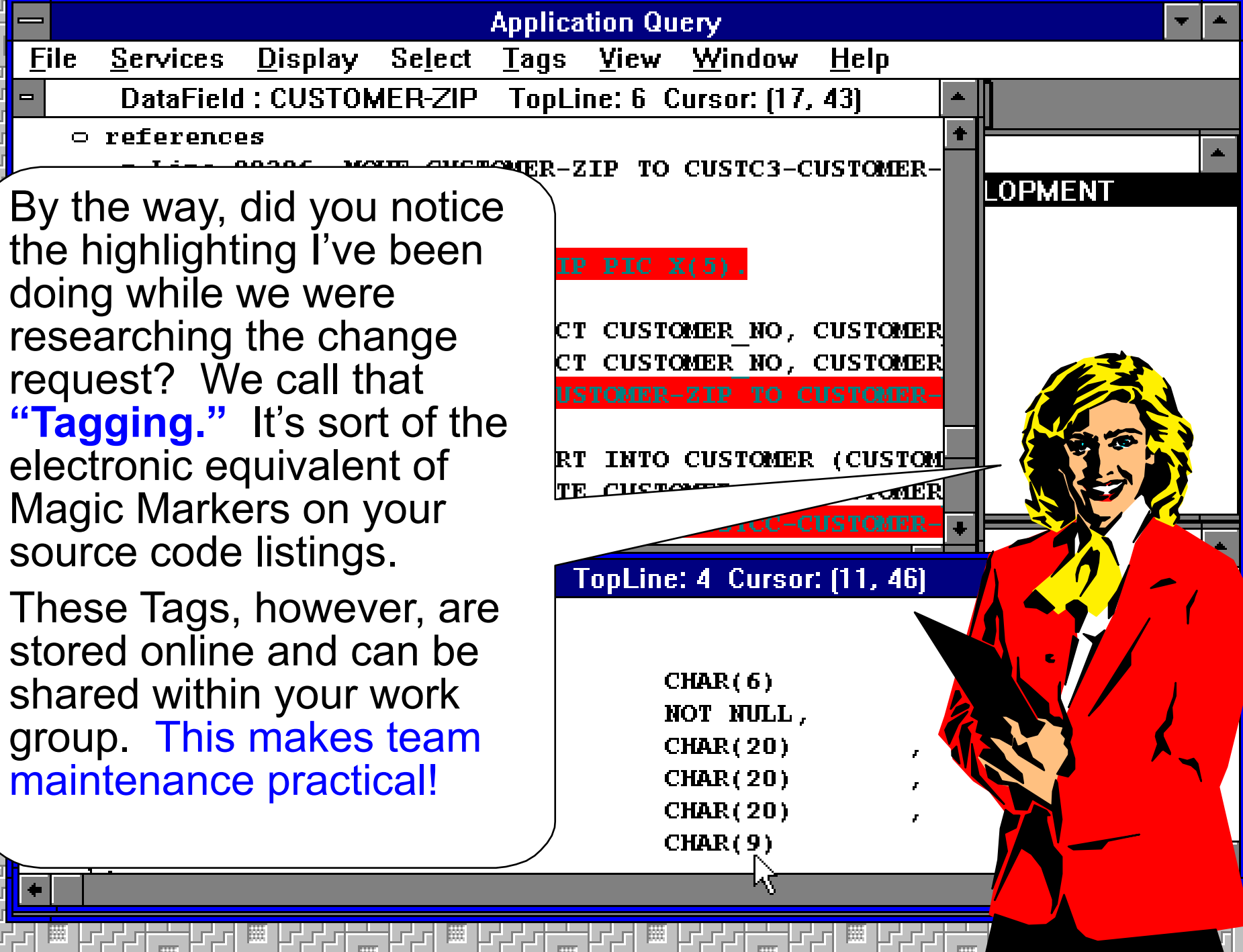
Line 01371 MOVE CUSTOMER-ZIP TO CUSTCC-CUSTOMER-ZIP.

references

o Line 01348 MOVE CUSTCC-CUSTOMER-ZIP TO CUSTOMER-ZIP.







Application Query

File Services Display Select Tags View Window Help

DataField : CUSTOMER-ZIP TopLine: 6 Cursor: (17, 43)

references

CREATE TABLE CUSTOMER-ZIP TO CUSTC3-CUSTOMER-

ZIP PIC X(5).

CT CUSTOMER_NO, CUSTOMER

CT CUSTOMER_NO, CUSTOMER

CUSTOMER-ZIP TO CUSTOMER-

RT INTO CUSTOMER (CUSTOM

TE CUSTOMER

CUSTC3-CUSTOMER-

TopLine: 4 Cursor: (11, 46)

CHAR(6)

NOT NULL,

CHAR(20)

CHAR(20)

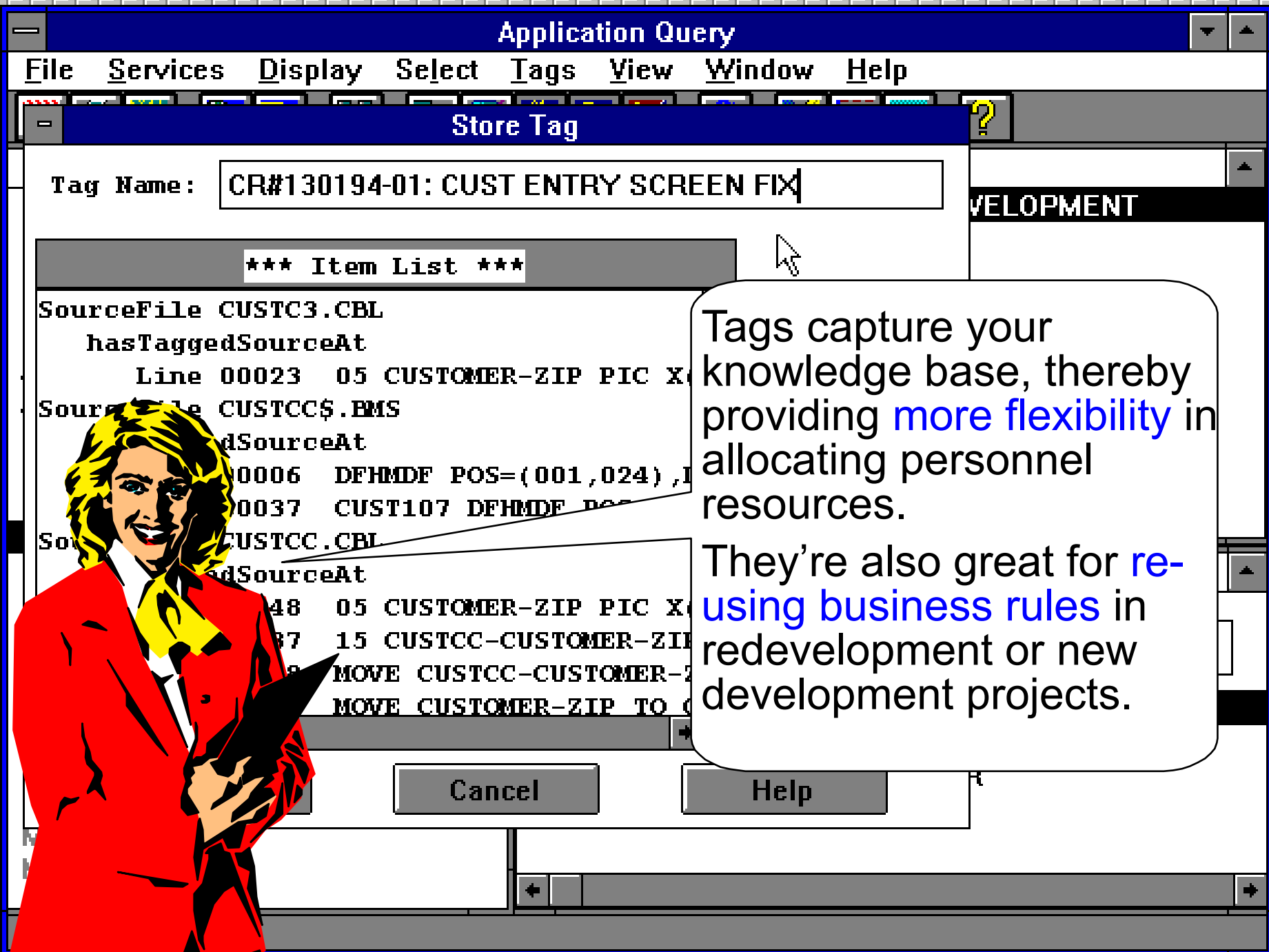
CHAR(20)

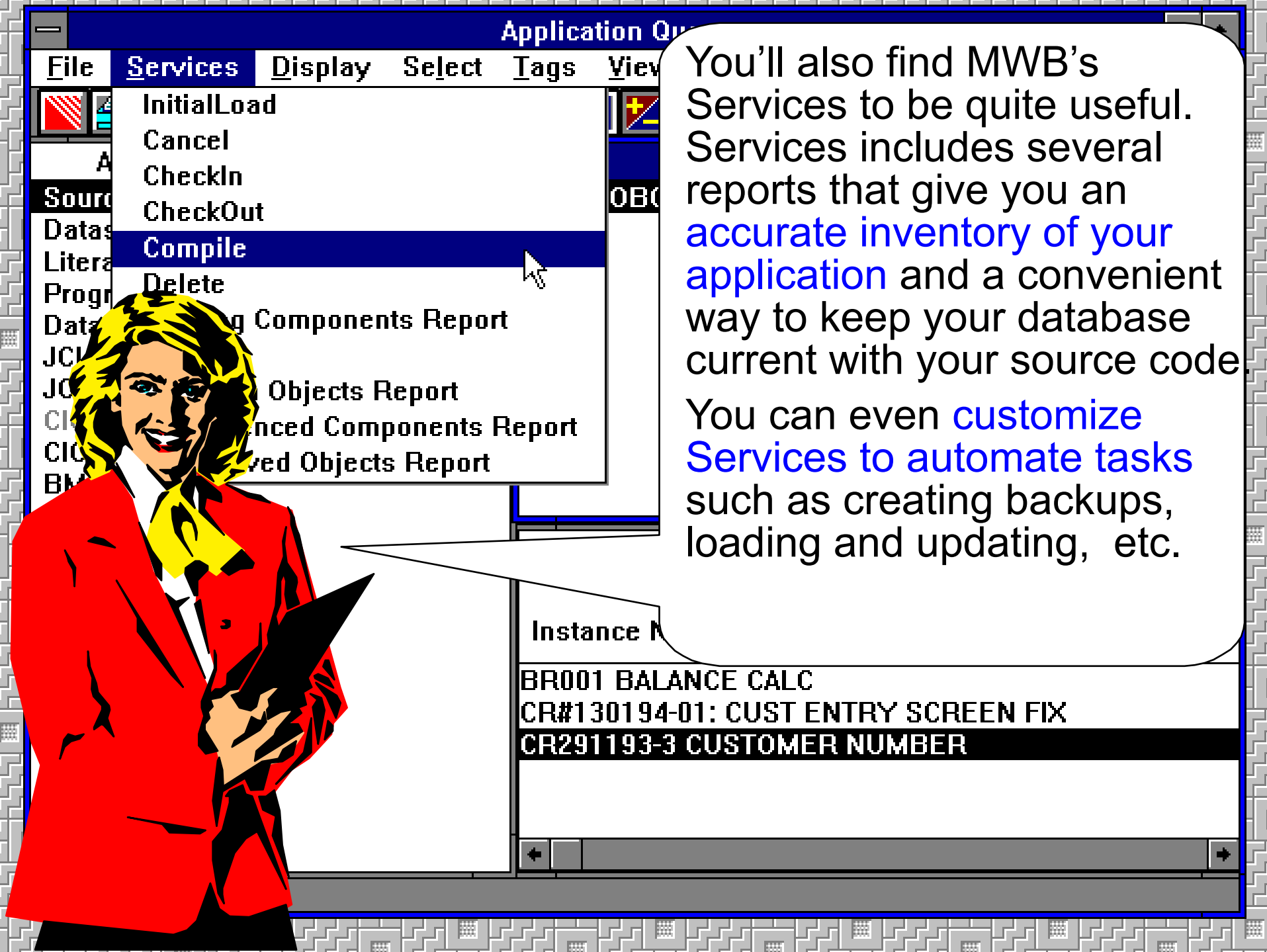
CHAR(9)

By the way, did you notice the highlighting I've been doing while we were researching the change request? We call that **"Tagging."** It's sort of the electronic equivalent of Magic Markers on your source code listings.

These Tags, however, are stored online and can be shared within your work group. **This makes team maintenance practical!**

LOPMENT





The image shows a woman with blonde hair, wearing a red blazer and a yellow scarf, holding a black clipboard. She is standing next to a computer monitor. The monitor displays a software application window titled "Application Qu...". The window has a menu bar with "File", "Services", "Display", "Select", "Tags", and "View". The "Services" menu is open, showing options: "InitialLoad", "Cancel", "CheckIn", "CheckOut", "Compile" (highlighted with a mouse cursor), "Delete", "Generating Components Report", "Objects Report", "Advanced Components Report", and "Used Objects Report". Below the menu, there is a section titled "Instance M..." with a list of items: "BR001 BALANCE CALC", "CR#130194-01: CUST ENTRY SCREEN FIX", and "CR291193-3 CUSTOMER NUMBER". A large speech bubble on the right side of the screen contains text about the "Services" menu.

You'll also find MWB's Services to be quite useful. Services includes several reports that give you an **accurate inventory of your application** and a convenient way to keep your database current with your source code. You can even **customize Services to automate tasks** such as creating backups, loading and updating, etc.

Application Query

File Services Display Select Tags V

InitialLoad

Cancel

CheckIn

CheckOut

Compile

Delete

Components Report

Objects Report

Ed Comp

Objects Report

Services also provides dynamic, instant access to the tools you've integrated into your customized desktop.

You select the tools that meet your specific requirements, all under one common desktop for easy access by your developers.

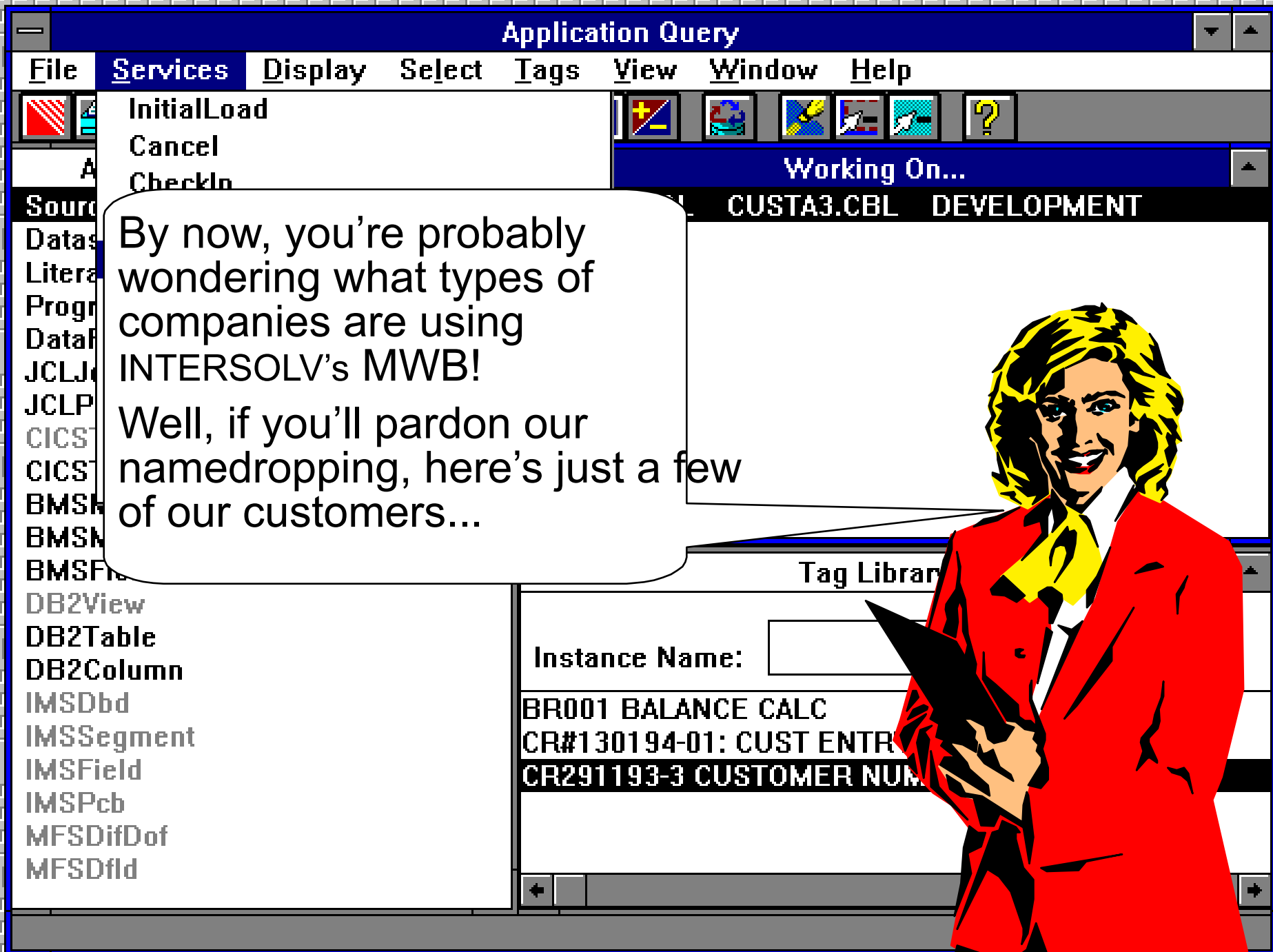
Tag Library

Instance Name:

BR001 BALANCE CALC

CR#130194-01: CUST ENTRY SCREEN FIX

CR291193-3 CUSTOMER NUMBER



MCI

NYNEX

FDC

Makita

AMEX

SIAC

Sallie Mae

Southern California Edison

Chase

Computer Horizons

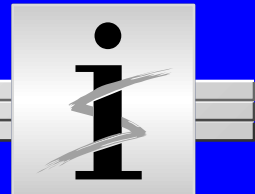
AMS

Unilog

AT&T

U.S. West

ANZ Bank



MCI

Makita

SIAC

Salli

Southe

Chas

C

A

Unile

U.S.

ANZ Bank



And listen to what they're saying!

"The 'eight day' research project took only 3 hours!"

"We transferred 25% of our staff to new development projects!"

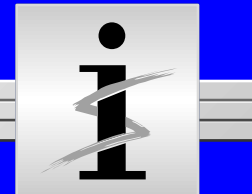
"Our staff ramped up in less than a week!"

"I was able to respond to an end user request in 2 1/2 minutes, while I still had him on the phone!"

And there's more...

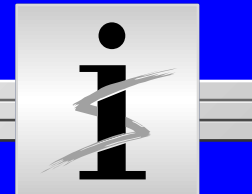


No more waiting
with **priority**
processing!



No more waiting
with **priority**
processing!

The system test
worked because
I got **the whole**
change!

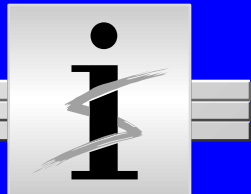


No more waiting
with **priority**
processing!



The system test
worked because
I got **the whole**
change!

By **capturing my**
knowledge base, I
can now get
promoted!



No more waiting
with **priority**
processing!

My beeper
hasn't gone off
in months!

The system test
worked because
I got **the whole**
change!

By **capturing my**
knowledge base, I
can now get
promoted!





No more waiting
with **priority**
!

My beeper
hasn't gone off
in months!

As you can see, INTERSOLV's
Maintenance Workbench can
really **make an impact**!

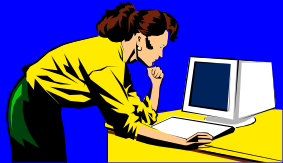
This "New World" in software
maintenance can help **you**
immediately.

By **capturing my**
knowledge base, I
can now get
promoted!



INTERSOLV Development Suite

New Development

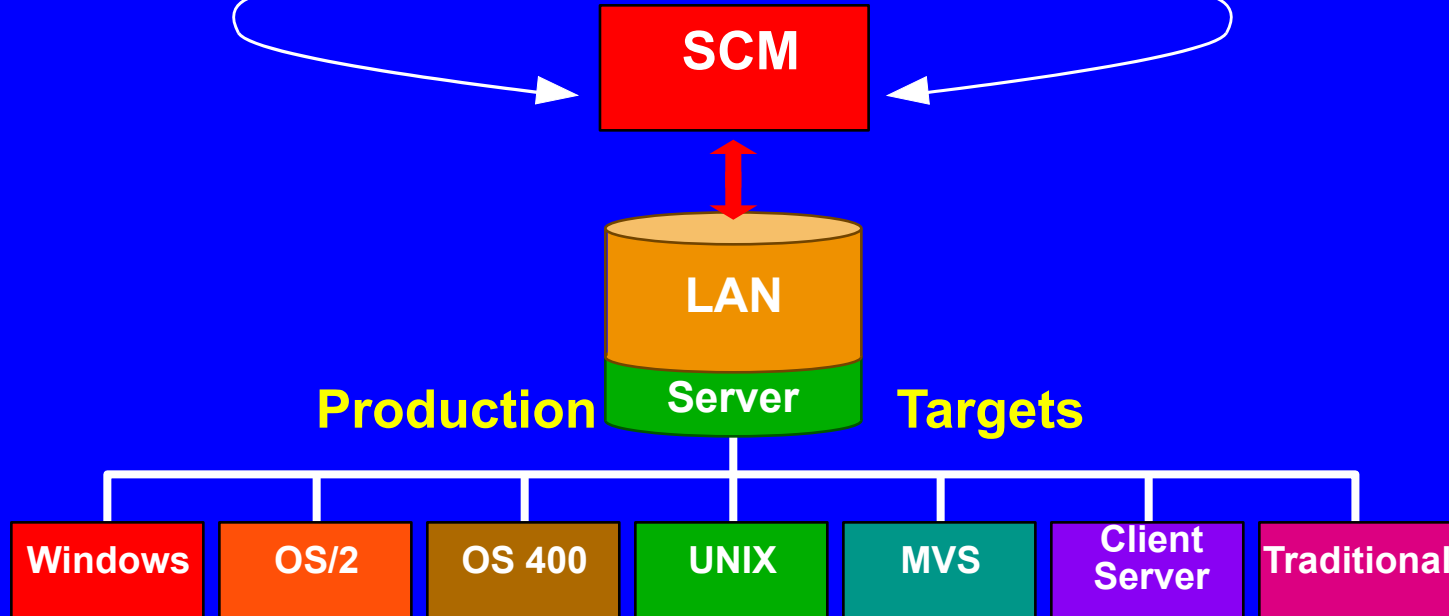


Rapid Prototyping
Design driven

Software Configuration
Management

Existing Systems

Maintain
Extend
Redesign



Broad Production Coverage



INTERSOLV Development Suite

New Development

Existing Systems
Maintenance
Extension
Redesign

Maintenance Workbench is one of many tools in the **INTERSOLV Development Suite**. For more information, please contact your local INTERSOLV representative or give us a call:

1-800-777-8858 (North America) 44 727 812812 (United Kingdom).

And please tell them Courtney sent you!

ment

Targets

windows

OS/2

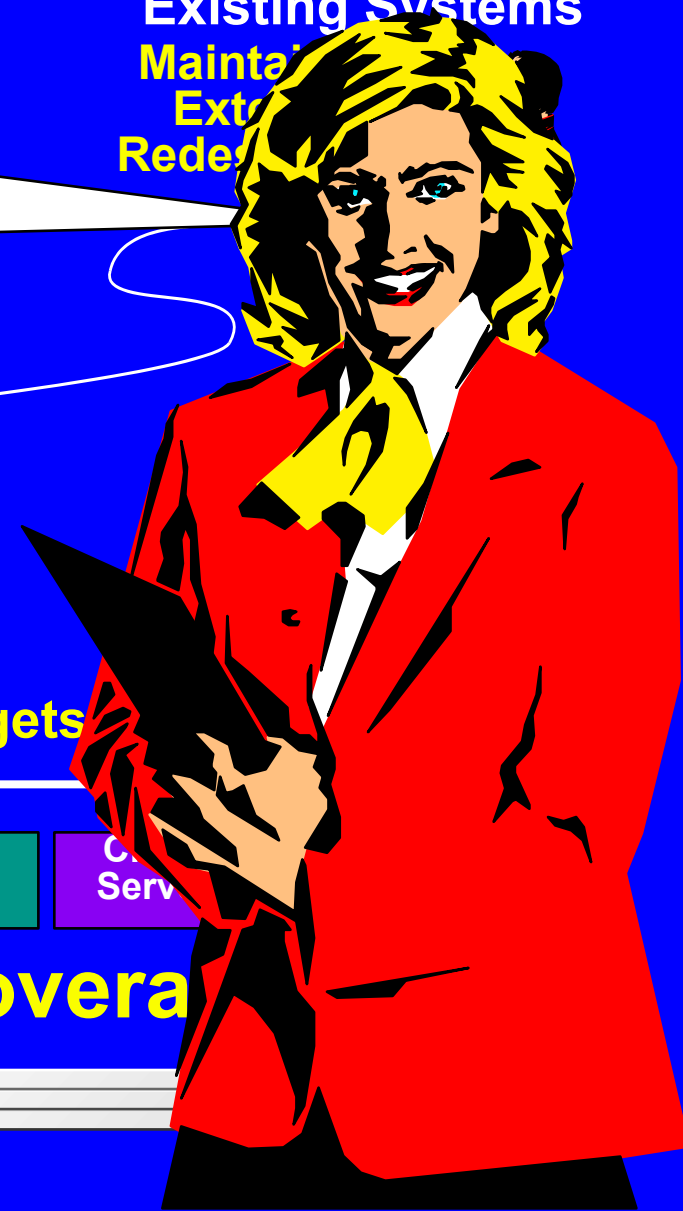
OS 400

UNIX

MVS

C Serv

Broad Production Coverage





INTERSOLV

**Your Edge in Software
Development**

