



## WinView v2.0

### Introduction

[What is WinView](#)

[Copyright and Disclaimer of Liability](#)

[Installation](#)

### Procedures

[Accessing the PopUp Menu](#)

[Button Functions](#)

[Examining a specific window](#)

## **What is WinView**

**WinView** is a utility which was written to help the Visual Basic programmer snoop around a windows attributes. This utility has proved very useful to me and since the original author permitted the free use, modification, and distribution of this utility, I thought I'd share it with others.

## Copyright and Disclaimer of Liabilities

**WinView** is a utility which appeared originally in Daniel Appleman's "Visual Basic Programmer's Guide to the Windows API." Since this version does not use code from the original utility I don't feel obligated to mention the copyright of the utility's original author.

This software is provided for free. The author will not be responsible for damages, direct or consequential, arising from the use of this utility. Use it at your own risk, and enjoyment, if applicable.

If you find bugs, which is highly likely, or just want to make comments or suggestions, please feel free to contact the me at:

Email: [grtorlba@seattleu.edu](mailto:grtorlba@seattleu.edu) (preferred)  
US Mail: George R. Torralba  
8728 Phinney Avenue N, Apt. #8  
Seattle, WA 98103  
(206) 781-7622

## Installation

### Distribution Files:

WINVIEW.EXE	The main executable file. You can put this file anywhere you wish.
WINVIEW.HLP	Help file for <b>WinView</b> . This must be in the same directory as the executable.
WINVWLIB.DLL	Extension library integral to <b>WinView</b> . This file goes to your \windows\system directory or, for better manageability, you can put this in the same directory as the executable.
CTL3D.DLL	Dynamic link library used by <b>WinView</b> . Place this file in your \windows\system directory. <b>Please make sure you dont have a newer copy of this library residing in your system directory. If you find one and decide to replace it with the one in this distribution, its a good idea to make a backup of the file.</b>

### File Not Included But Required:

VBRUN300.DLL	Although this file is needed to run the program, it is not included in the package to reduce its size. If you dont have this file in your system (check your \windows or \windows\system directory) you can download it from the site where you acquired this program. If not, write the author and hell be happy to help you find a copy.
--------------	--

## **Accessing the Popup Menu**

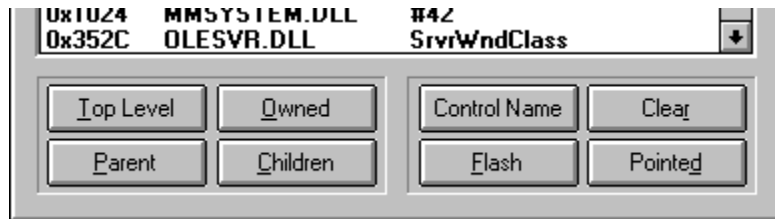
To access the Popup menu, click the right mouse button anywhere on the form, excluding the command buttons of course.

## Button Functions

### Attributes Buttons:

The attributes buttons have been removed. To view a window's attributes, double-click the item in the listbox with the left mouse button.

**Command Buttons:** (click on a button for a description)



## Examining a Specific Window

If you want to examine the attributes of a specific window visible on the desktop, choose the **Pointed** button. **WinView** will change the shape of the cursor to a magnifying glass. Click on the window you want to examine.

**Control Name**

Displays the form or controls Visual Basic name.



## **Top Level**

Enumerates all top-level windows currently on the desktop.

**Owned**

Enumerates all owned windows, if any, of the currently selected window.

**Parent**

Shows the parent, if any, of the currently selected window.

## **Children**

Enumerates all children windows, if any, of the currently selected window.

**Flash Window**

Flashes the currently selected window, if applicable.

**Pointed**

Allows you to select a window on the desktop to snoop.

**Clear List Box**

Clears the list box.

