



# Contents

## **SSFW Console Program**

[SSFW Console Program Overview](#)

[Local Queue tab](#)

[Remote Queue tab](#)

[View Print Job Log tab](#)

[Control Panel tab](#)

[Other Options](#)



## SSFW Console Program Overview

The SuperScript for Workgroups (SSFW) Console provides a single access point to the four major SSFW program screens. The purpose of the SSFW Console is to provide an easy means to configure the SSFW printer and to monitor and control print jobs. The SSFW Console resides in the SSFW group box in Windows Program Manager. To activate the SSFW Console double-click the SSFW Console icon. Each of the four major program features can be viewed by clicking the folder tab under the window menu bar. The four tabs are:

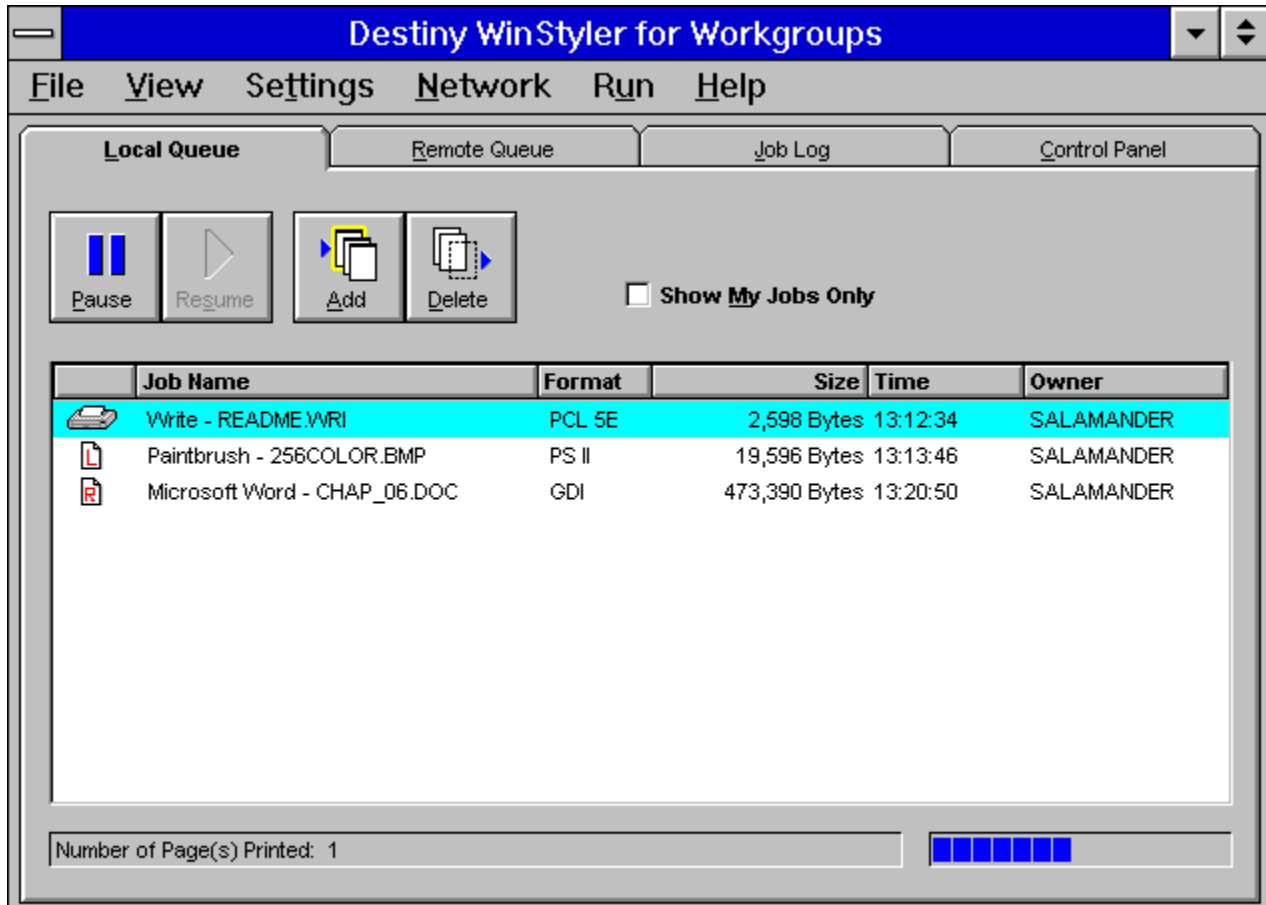
- \* Control Panel
- \* Local Queue
- \* Remote Queue
- \* Job Log

You will be pleased to find that SSFW provides standard Microsoft Windows set of screens and menus which give you the familiar Windows look-and-feel. Sections 6.1 through 6.4 describe the SSFW Console features listed above. The description in each section is of the buttons and presentation information. Section 6.5 describes the menu bar items. You will notice that the menu bar items are the same for each tab. However, some sub-menu items are not available for a given tab and are seen as grayed when the menu bar item is selected. You can perform all SSFW functions through buttons. Menu bar items are provided for those users that prefer to use the keyboard in some cases instead of the mouse.



## Local Queue tab

The Local Queue is used to review the status of your queued print jobs. For Servers, all pending print jobs are local to the Server. For Clients, the Local Queue represents print jobs that have been queued to a remote Server but are not yet transferred to that remote Server.



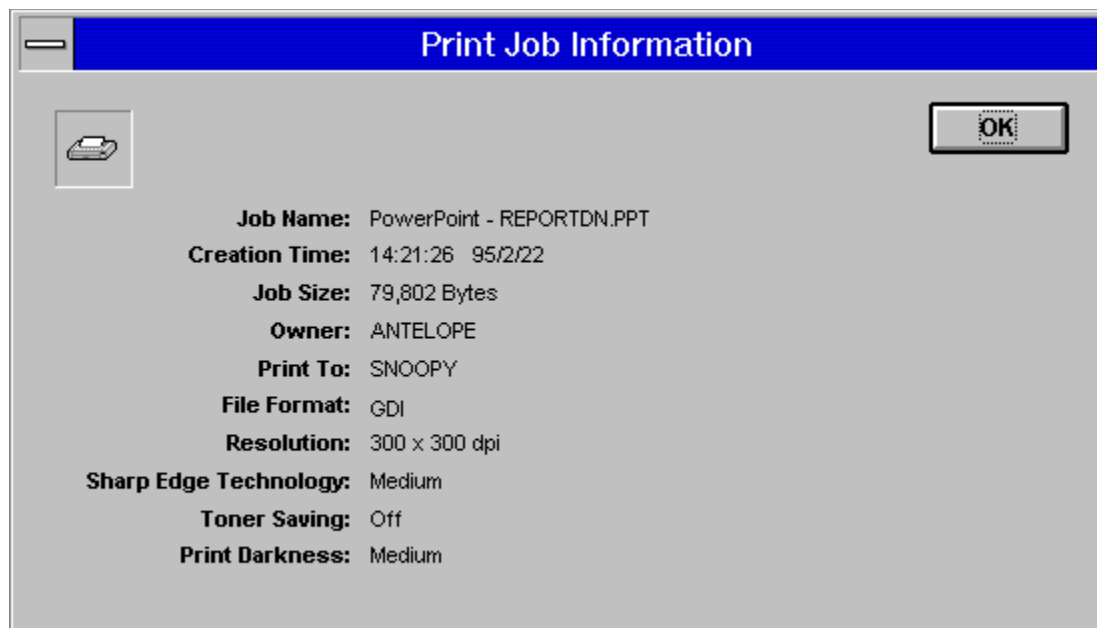
The job queue presents:

- \* the print job name
- \* the format of the print job (GDI, PS, PCL)
- \* the size in bytes of the print job
- \* the time the job was sent to the queue
- \* and the owner of the print job

The job owner category is primarily applicable to the Server.

Local Queue presents the status of the job currently printing. For Clients, this status will display only when the Client's print jobs are printing.

If you double click a job entry in the job queue, a Print Job Information dialog will pop up to show you the more information about the job. Following figure shows the Print Job Information dialog.



Both Servers and Clients can highlight then drag-and-drop jobs within the Local Queue to reorder the print queue. Drag-and-drop is available for jobs that have not started printing. To drag-and-drop, perform the following steps:

1. Move the mouse cursor to the entry you want to select.
2. Press down on the left button of your mouse. Do not lift your finger. The entry will turn blue to indicate that it has been selected.
3. Without lifting your finger, drag the print job (in other words, move the mouse) to the desired new location in the queue.
4. Release your finger from the mouse button. The print job will now show up in its new location, and the other print jobs will subsequently move up or down in the queue.

The following table presents the Local Queue button icons, a brief description of the button action, and refers to the section that provides detailed information about the features available.



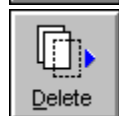
This selection allows you to pause the printer.



This selection allows you to resume the printer.

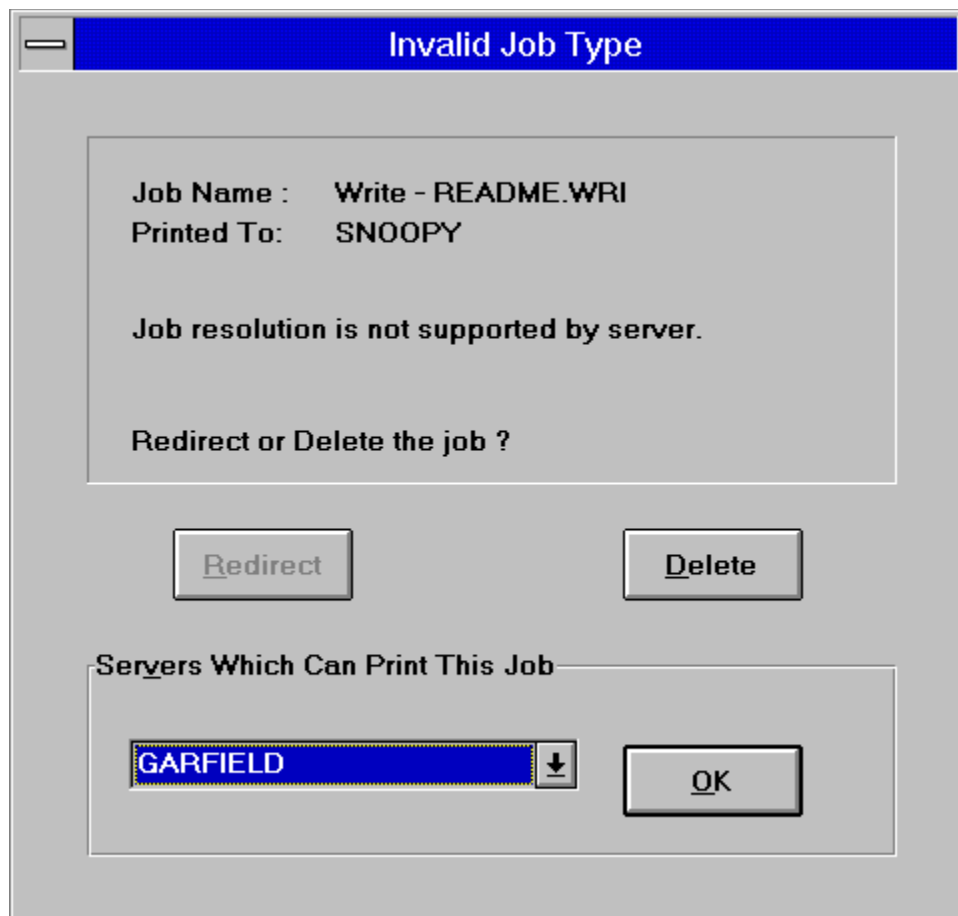


This selection allows you to add a print job to the print queue.



This selection allows you to delete the highlighted print job from the print queue.

When a print job is queued to Local Queue, a Invalid Job Type dialog will pop up if the job type of the print job is not compatible to the server printer. Next figure shows the Invalid Job Type dialog. You can redirect or delete the print job. If you want to redirect the job, you must select a new server and click the OK button.



When a print job is transferring to server, a Can't Print to Server dialog will pop up if there is a problem of transferring job. Next figure shows the Can't Print to Server dialog. You can resend or redirect or delete the print job. If you want to redirect the job, you must select a new server and click the OK button.

Can't Print to Server

Job Name :   Write - README.WRI

Printed To:    ABC

Server ABC is not available!

Resend, Redirect or Delete the job ?

Resend

Redirect

Delete

Servers Which Can Print This Job

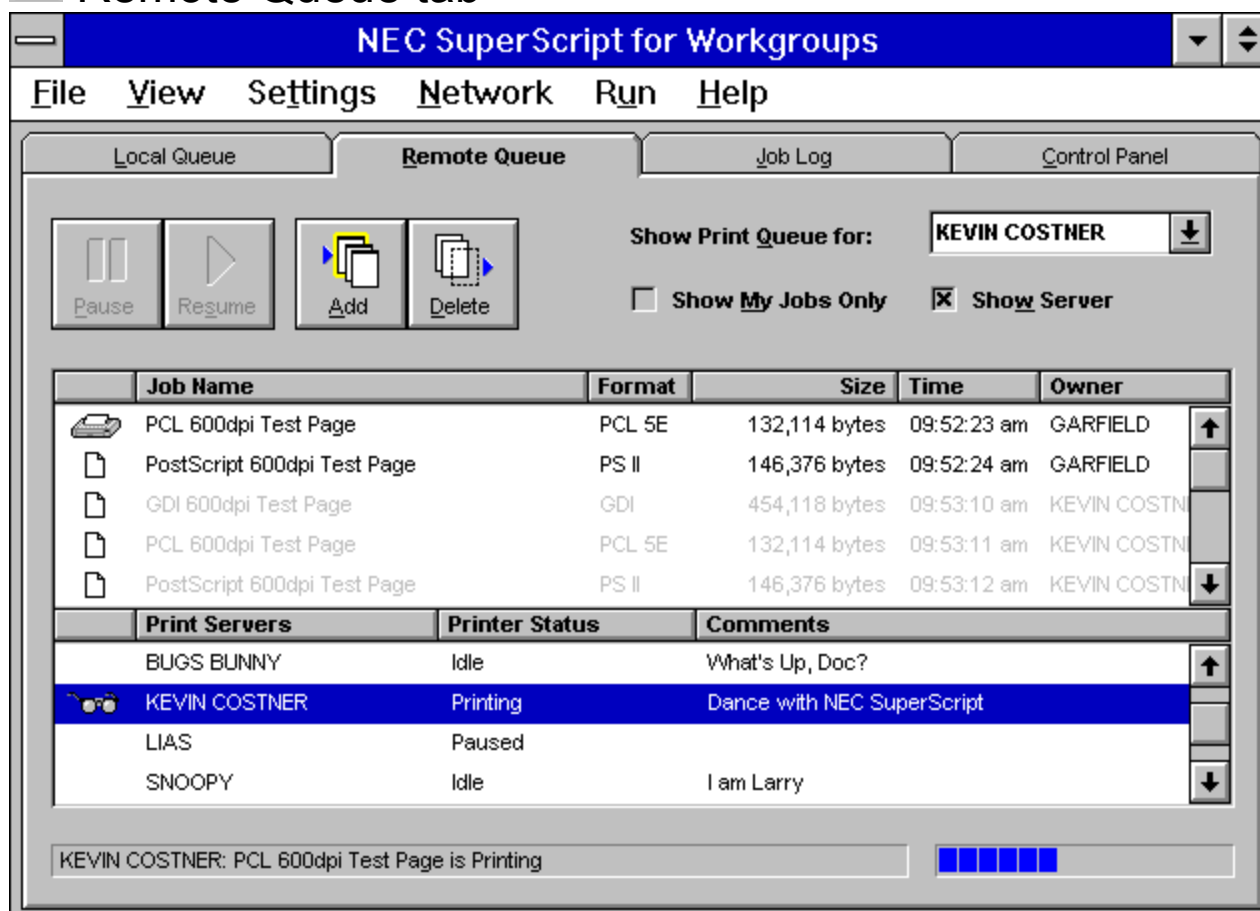
GARFIELD

↓

OK



## Remote Queue tab



The Remote Queue is used to review the status of your queued print jobs at the remote printer. Checking Show Servers will search for all shared WinStyler for Workgroups servers currently running on the network and display those servers in the Print Server List Box which is located under the Print Job List Box. Clients can select a shared print queue through the Show Print Queue for Combo Box, or from the Print Server List Box.

The job queue presents:

- \* the print job name
- \* the format of the print job (GDI, PS, PCL)
- \* the size in bytes of the print job
- \* the time the job was sent to the queue
- \* the owner of the print job

The job owner category is primarily applicable to the Server. The drag-and-drop feature is available in the remote job queue. Clients can drag-and-Drop his(or her) print jobs to reschedule within Print Job List Box or to redirect to one of the print server within Print Server List Box. Job Rescheduling is available for jobs that have not been processed at the print server side. To drag-and-drop, please refer to the following steps:

1. Move the mouse cursor to the entry you want to select.
2. Press down on the left button of your mouse. Do not lift your finger. The entry will be highlighted to indicate that it has been selected.

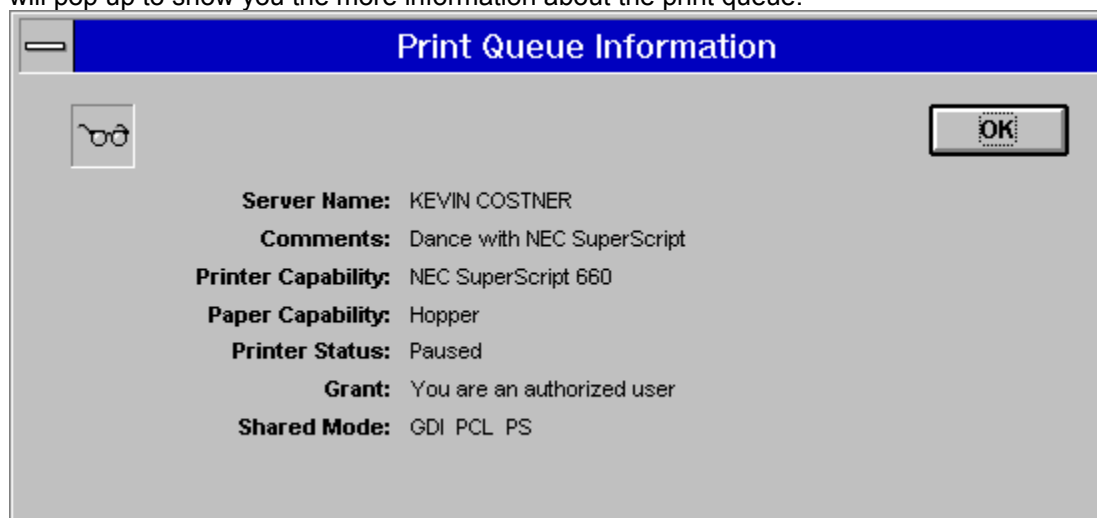
3. Without lifting your finger, drag the print job (in other words, move the mouse) to the desired new location.
4. Release your finger from the mouse button. To Drop the selected print job within Print Job List Box is to reschedule the print job queue. The print job will now show up in its new location, and the other print jobs will subsequently move up or down in the queue. To Drop the selected print job to a print server within the Print Server List Box is to redirect the print job from the current print server to the destined print server.

Please note that once you close the console program before the remote print job is completed, you are not allowed to redirect that job anymore.

If you double click a job entry in the Print Job List Box, a Print Job Information dialogue box will pop up to show you the more information about the job.



If you double click a print server entry in the Print Server List Box, a Print Queue Information dialogue box will pop up to show you the more information about the print queue.



The following table presents the Remote Job Queue button icons, a brief description of the button action, and refers you to the section that provides detailed information about the features available. Remote Job Queue presents the status of the job currently printing.





queue tab.

This selection is disabled at all time. Pause the server printer is not allowed at remote



queue tab.

This selection is disabled at all time. Resume the server printer is not allowed at remote



This selection allows you to add a print job to the current print queue.



This selection allows you to delete the highlighted print job from the current print queue.

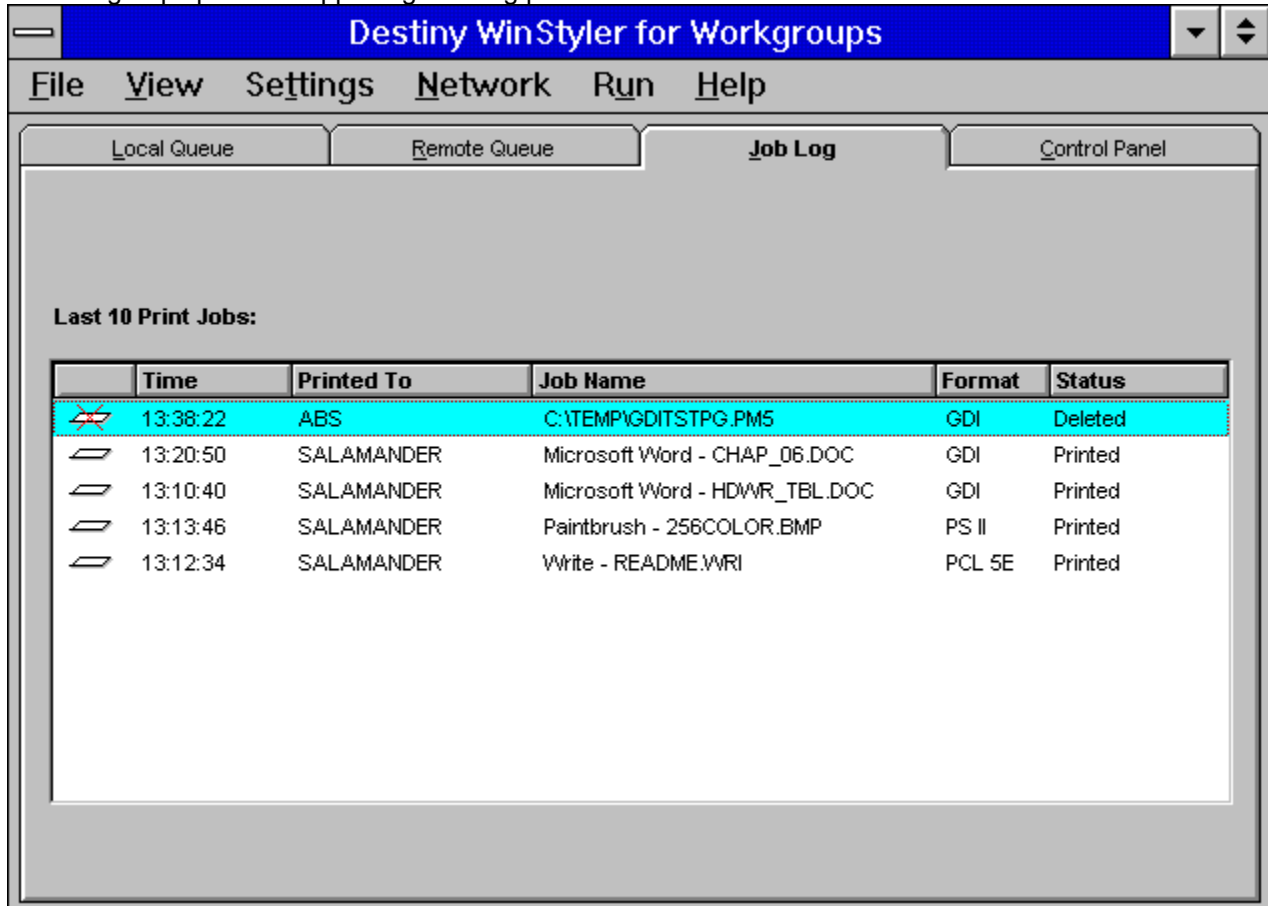


## View Print Job Log tab

The Job Log provides a historical log of the last 10 jobs queued for print. The Job Log presents:


- \* the time the job was printed
- \* the Server name of the print job
- \* the job name
- \* the format of the print job (GDI, PS, PCL)
- \* print result

Job Log becomes more useful for Clients in workgroup environments where there are multiple WinStyler for Workgroups printers supporting differing printer characteristics.



If you double click a job entry in the job queue, a Print Job Information dialog will pop up to show you the more information about the job.

Print Job Information



OK

**Job Name:** PowerPoint - REPORTDN.PPT

**Creation Time:** 14:21:26 95/2/22

**Job Size:** 79,802 Bytes

**Owner:** ANTELOPE

**Print To:** SNOOPY

**File Format:** GDI

**Resolution:** 300 x 300 dpi

**Sharp Edge Technology:** Medium

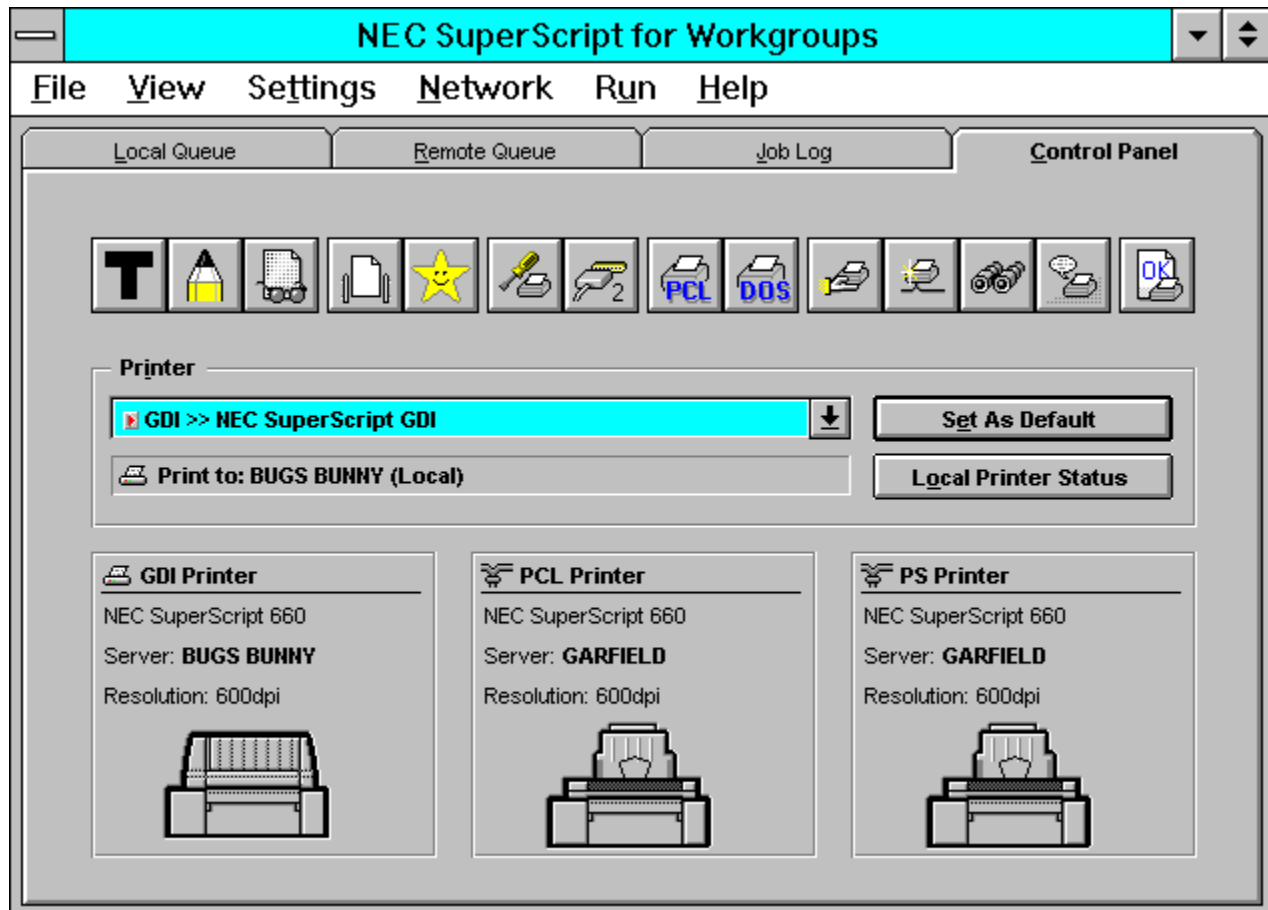
**Toner Saving:** Off

**Print Darkness:** Medium



## Control Panel tab

The Control Panel provides the mechanism to configure and control the WinStyler for Workgroups printer. The below figure shows the Control Panel tab of the SSFW Console.



The printer selections applicable to SSFW are:

- \* NEC SuperScript GDI
- \* NEC SuperScript PS
- \* NEC SuperScript PCL

Control Panel is divided into six button categories, and, the Printer information and printer selection display. The Printer group item presents the currently selected printer and provides a list of additional printer selections.

### Related Topics:

[Function Buttons](#)  
[Printer Selection Box](#)  
[Printer Group Item](#)



## Function Buttons



Function buttons consist of the following buttons Each topics provides detailed information about the features.

[Toner Saving](#)

[Sharp Edge Technology](#)

[Print Darkness](#)

[Page Save](#)

[Power Saving](#)

[Printer Setup](#)

[Connect Port](#)

[PCL Control Panel](#)

[DOS Printing](#)

[Share Printer](#)

[Connect To](#)

[Client Monitor](#)

[Status Report Options](#)

[Print Test Page](#)



## Toner Saving



This selection allows you to choose from three toner saving modes: light, medium, and dark. The Off selection returns you to regular print toner use. Toner saving modes can significantly reduce toner costs by extending the life of your toner cartridge.



## Sharp Edge Technology



This selection provides a smoothing of your line art and text characters. This capability smoothes the jagged stair stepped look on many angled and curved lines and fonts.



## Print Darkness



This selection provides the option of three shades of toner darkness. The default is medium.





## Page Save



This selection saves a page image when a printer paper jam occurs so that the page will reprint when the paper jam is fixed.



## Power Saving



This selection identifies the wait time between last printer use and start of printer power saving.



## Printer Setup



This selection allows you to configure the printer.



## Connect Port



This selection allows you to identify the port your printer is connected to, such as LPT1.



## PCL Control Panel



This selection presents the PCL Control Panel Menu.



## DOS Printing



This selection allows you to configure the printer for DOS within Windows printing.



## Share Printer



This selection allows you to share the printer with WinStyler for Workgroups Clients.



Connect To



This selection allows you to connect to a shared printer.





## Client Monitor



This selection allows you to view the Clients connected to the shared printer.



## Status Report Options



This selection is available to all users and defines the various status selections and their display options.



## Print Test Page




This selection allows you to print the printer test pages.



## Printer Selection Box

**Printer**

 **Print to: BUGS BUNNY (Local)**

 **GDI >> NEC SuperScript GDI**



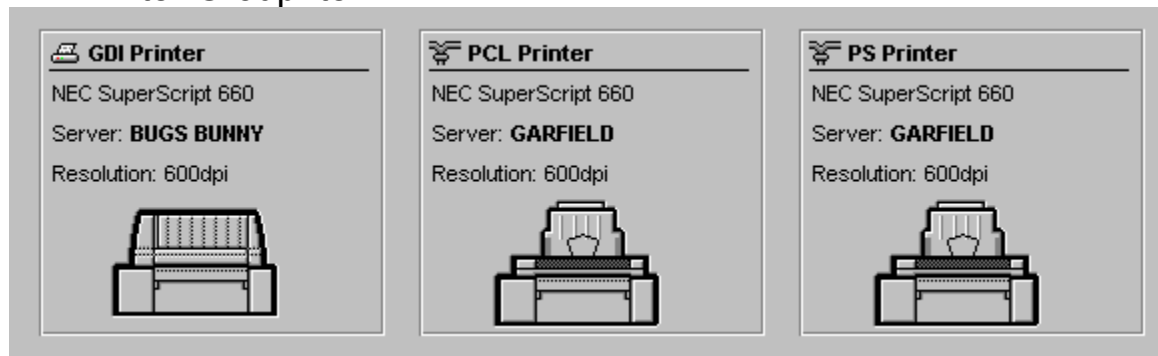
**Set As Default**

**Local Printer Status**

Use the list bar to highlight the print mode you want to use. Then, to apply the selected printer, click the Set As Default button. You can also request the current printer status through the Local Printer Status button.



## Printer Group Item



Printer Group item presents the currently selected printer and provides a list of additional printer selections.



## Other Options

SSFW provides the standard Windows menu items available in most Windows applications as well as application specific menu items. Some of the menu items match buttons available on one of the tabbed displays. However, there are some SSFW functions that can be accessed only through the pull-down menu. See each topics for detail information.

### **Settings** menu

Priority

### **Network** menu

Change Name

### **Help** menu



## Priority



Windows lets you run several applications at the same time. This helps productivity, but means you are sharing your PC resources among several activities. SSFW priority settings let you control the priority of the printing activity relative to other applications running at the same time.

You can select High, Medium, or Low priority processing for when you print. Printing at high priority produces output faster, but may slow down your system more than the other priority settings. On the other hand, printing at lower priority lets your other applications run faster, but also means your document will take longer to print.



## Change Name



This selection is available to all users and allows the user to change the computer name. You must exit and restart Windows before this change takes effect.





## Help Menu



The Help menu links you to SSFW Help system. With Help you can select Index to see a list of topics related to SSFW. Clicking About shows version and copyright information for SSFW .



