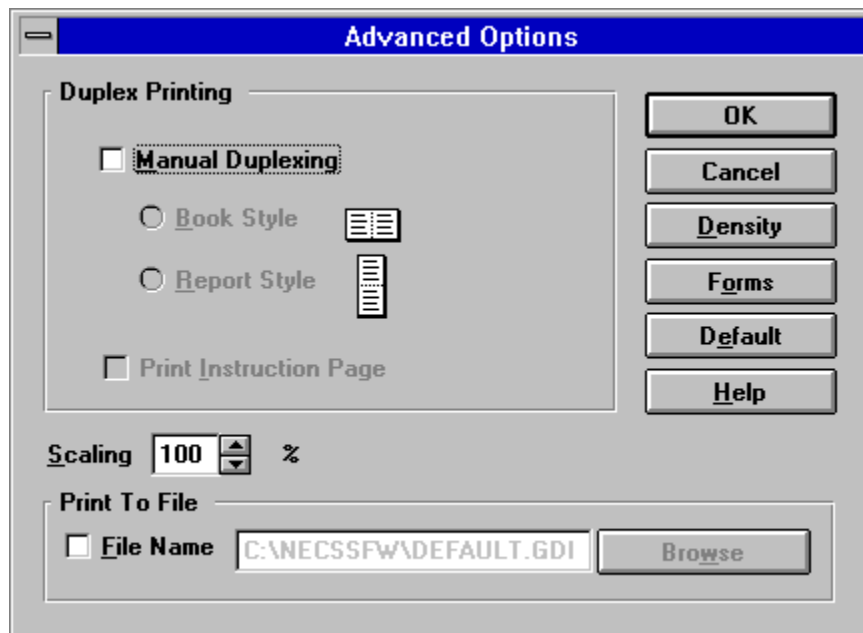


## Advanced Options

The following figure shows the GDI Advanced Options dialog box.



Putting an X in the box marked **Use NEC SuperScript Printer Manager** turns the Print Manager on when you use GDI mode. The NEC SuperScript Print Manager is **always** on for the PCL and PS modes.

In GDI mode, the NEC SuperScript Print Manager lets you enable the use of the NEC SuperScript Print Manager control screen. Turn off the NEC SuperScript Print Manager to get the fastest printing.

In GDI mode other additional features include:

- [Duplex Printing](#)
- [Print Density Control](#)
- [Forms Control](#)
- [Scaling](#)
- [Print to File.](#)

You can also access online help from the Advanced Options dialog box.

### See Also:

[GDI Introduction](#)

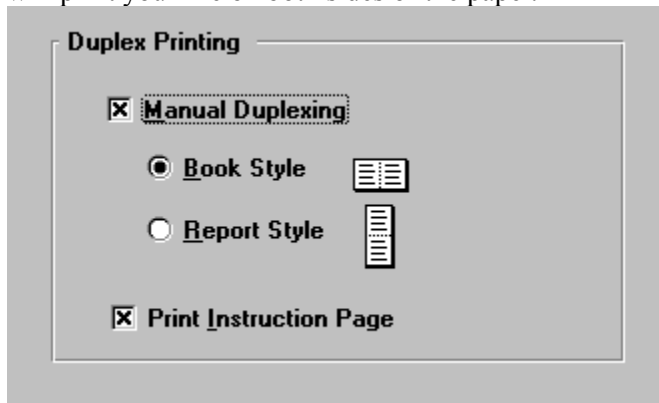
[GDI Setup Screen](#)

[Getting Assistance](#)



## Duplex Printing

If you put an X in the box marked Manual Duplexing, the NEC SuperScript , with a little help from you, will print your file on both sides of the paper.



Here's how double-sided printing works:

1. The NEC SuperScript prints *every odd-numbered page* of your document, starting with Page 1.
2. You pick up the printed sheets of paper, straighten them, and then reinsert them into the NEC SuperScript printer in one of two ways for either book style or report style.  
Book Style: Place the sheet with inverted copy face up in the input paper tray.  
Report Style: Place the sheet with upright copy in the input paper tray.
3. NEC SuperScript prints *every even-numbered page* on the backs of the pages already printed.

When finished, you should have a complete, double-sided document. You can also choose one of two formatting options:

**Book Style** prints out so that if you opened the document in the manner of a book, pages 2 and 3 would face each other.

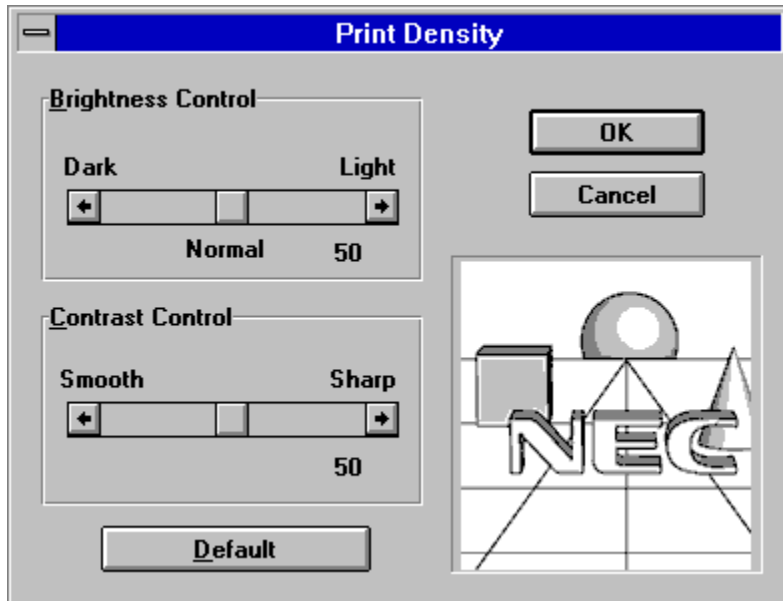
**Report Style** prints the even-numbered pages upside down, so that if you opened the document in the manner of a report bound at the top, pages 2 and 3 would face the same way.

You can also put an X in the box marked **Print Instructions**. If you do this, then the NEC SuperScript printer will print out a sheet of paper giving you detailed instructions every time you print in manual duplex mode.



## Print Density

Print density provides controls to customize images such as photographs to print at the best possible quality. Use the brightness control slider to darken or lighten an image's brightness. Use the contrast control slider smooth or sharpen the image.



*Note: The effect of a particular density setting (brightness or contrast) is dependent on how your Windows application handles various graphical formats. Be sure to test the density setting by printing some test copies to see the effect.*



## **Print to File**

Use print to file to prepare a file for use as a cover page, trailer page, or an overlay image.



## Scaling

Scaling allows you to reduce or enlarge the document output in a range of 10% to 200%.

*Note: You may notice some difference in the way an image is scaled in different applications. Some Windows applications orient the document from the center of the page while others begin at the upper left corner. The orientation of the document affects the placement of the image during scaling.*





## GDI Introduction

GDI mode takes advantage of Windows' own internal design to produce documents faster than most conventional printers can. Other printers require Windows to translate a document into a special printer language, such as PCL on LaserJet printers. GDI mode reduces overhead by eliminating this translation step before starting to print. This results in faster printing (as much as four times faster for some files). NEC SuperScript 's GDI mode includes some additional features such as manual duplex printing.

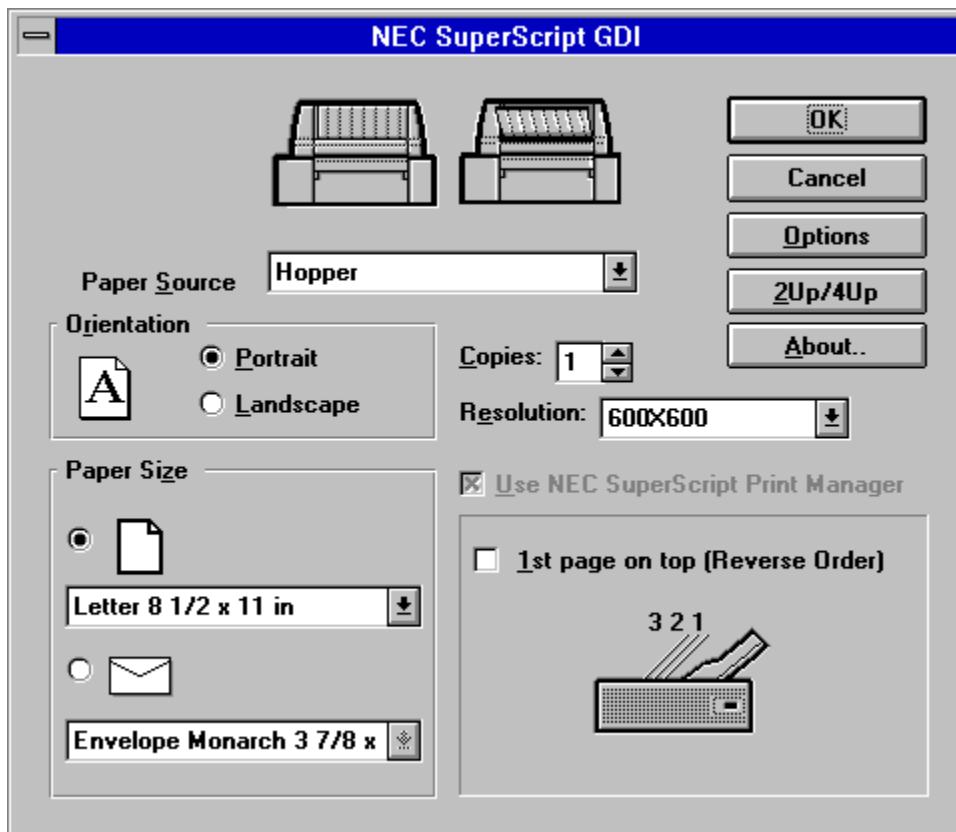
GDI mode uses Windows functionality which is not available when running non-Windows applications. For these reasons NEC SuperScript includes a PCL emulation mode. See "Selecting Printing Modes" for information on selecting GDI mode and/or PCL mode.



## GDI Setup Screen

You can set options for GDI mode by using the Control Panel in Windows:

1. Switch to the Program Manager. You should see a window titled **Main**. If this window has been minimized, restore it.
2. Double-click on the **Control Panel** icon in the Main window.
3. Double-click on the **Printers** icon in the **Control Panel** window.
4. Select NEC SuperScript GDI on NEC.GDI.
5. Click on the Setup button. You should see a screen that looks like this:



You can select settings for the following parameters:

- Paper Source
- Orientation
- Paper Size
- Number of copies
- Use NEC SuperScript Print Manager
- Page order
- Resolution
- 2Up/4Up



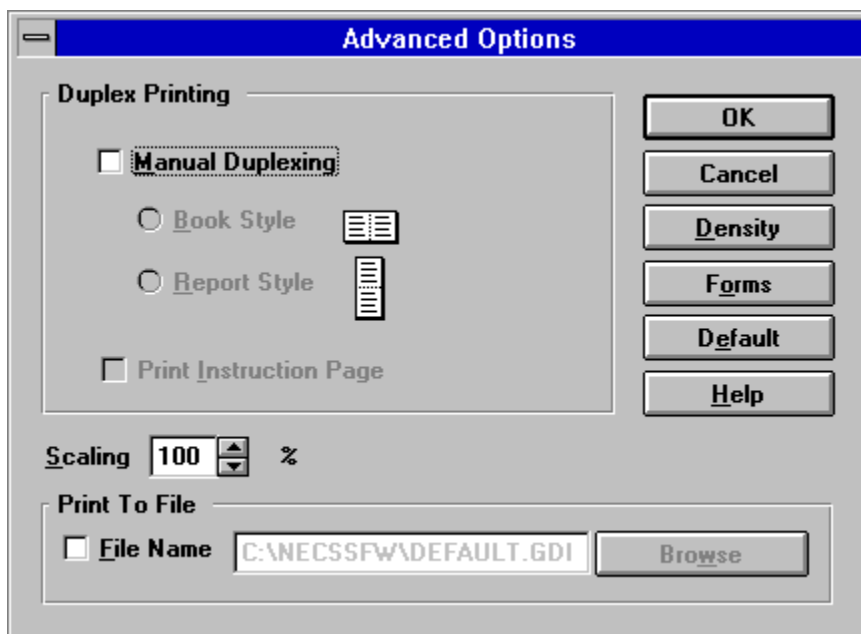
The **OPTIONS** button takes you to the Advanced Options screen, described in "[GDI Advanced Options Screen](#)".

Press the **OK** button if you are satisfied with the values shown in each box and in the Options dialog window. The changes you have made will take effect, and you will leave this window. If you press the **CANCEL** button, you will leave the window, but any changes you made will **not** take effect.

Your Windows-based application might duplicate some NEC SuperScript GDI settings such as the numbers of copies. For faster and more accurate printing you should use the NEC SuperScript Setup screen instead of your application's printer setup options features to choose print settings.

Most of the popular Windows applications have hooks or shortcuts to the setup screen so you don't have to go through the Control Panel. For example, Microsoft Write includes a command called **Print Setup**, under the **File** menu, that allows you to set up the printer directly, without going through the Control Panel. This is the application's print setup screen (see the following figure). Verify that the NEC SuperScript GDI printer is selected and click on the Options button.

The **OPTIONS** button takes you to the NEC SuperScript GDI setup screen.



The application setup screen lets you select

- the paper source
- the paper size
- the number of copies (1 up to 99)
- the output in portrait (vertical) or landscape (horizontal) mode.

The method you use to open the GDI Setup screen determines whether your settings are applied to the current print job, stored with the document you are printing, or applied to all print jobs. This may vary from application to application.

If you open the Printer Setup dialog box from the Windows Control Panel or Print Manager, the settings you choose apply to all print jobs until you change the settings.

If you open the Setup dialog box from the application's Print Setup command, the application stores the settings with your document. The document prints using the settings until you change them.



If you open the Setup dialog box from the application's Print command, your choices apply only to the current print job. The next time you print, you must choose the print settings again.







