

ASHAMPOO's Monitoring Functions

As you will discover, ASHAMPOO 99 DELUXE gives you a powerful, comprehensive and very precise set of functions for monitoring your system configuration. Even the smallest changes between two configurations are registered (i.e. before and after installing an application), including changed file dates.

All the following items are monitored:

Registry:

- Deleted keys
- New keys
- Deleted values
- New values
- Changed values

All these changes can be reversed to restore previous system status.

Drives:

- Deleted directories
- New directories
- Deleted files
- New files
- Changed files (size, date and attributes)

You can delete **new** files and directories but deleted files cannot be restored unless you have made a backup in advance! See [File Backup](#) for a discussion of this issue.

Initialization Files:

ASHAMPOO monitors *WIN.INI*, *SYSTEM.INI*, *CONFIG.SYS* and *AUTOEXEC.BAT* for all these items:

- Deleted entries
- New entries
- Deleted values
- New values
- changed Values

All changes in *WIN.INI* and *SYSTEM.INI* can be reversed to restore previous system status. Unfortunately, this is not possible for text files like *AUTOEXEC.BAT* and *CONFIG.SYS*; these files must be restored manually.

You can also add user-defined system files to the list for monitoring. See [User-defined System Files](#).


Batch Commands

You can also run ASHAMPOO 99 DELUXE in batch mode from the command line:

Command line parameters:


/STORECONFIG

Saves the current computer configuration. This is equivalent to performing the following steps:

1. Start ASHAMPOO 99 DELUXE.
2. **Action / Save Current Configuration** OR 
3. Exit ASHAMPOO 99 DELUXE.

/COMPARE filename

Generates a comparison log file with the name *filename*. This is equivalent to performing the following steps:

1. Start ASHAMPOO 99 DELUXE.
2. **Action / Compare (create log file)** OR 
3. Exit ASHAMPOO DELUXE.

Contents



ASHAMPOO 99 DELUXE FOR WINDOWS® 95, 98 AND NT

ASHAMPOO 99 DELUXE is a powerful application deinstallation tool. It can monitor and register virtually all changes made to your system by installation programs, enabling you remove applications very thoroughly.

ASHAMPOO 99 DELUXE is designed for Windows® 95, 98 and NT 4/5 and has been tested extensively on all these systems. It is particularly effective at monitoring and handling changes to the Windows registry. This means that with ASHAMPOO 99 DELUXE, your registry will no longer be a bottomless pit full of data garbage!

Important Warning:

THIS PROGRAM DELETES FILES AND SYSTEM CONFIGURATION ENTRIES!
It is not recommended for beginners and novice users!

If used improperly ASHAMPOO can cause serious damage to your system configuration! Please make absolutely sure that you really know what you're doing before you allow the program to delete anything!

Introduction

New Features in ASHAMPOO 99 DELUXE

Getting Started

The Windows Registry

Selecting

Toolbar Commands

Menu Commands

Preferences

Quick Two-Button Operation

ASHAMPOO's Monitoring Functions

Take ASHAMPOO for a Test Drive

What About Applications' Own Deinstallers?

Exporting and Printing Log File Data

Batch Commands

Find and Delete Duplicates

Find and Delete Temporary Files

Note for Windows NT Users

Dual-boot Windows NT/9x Systems

Quick-starting ASHAMPOO99 DELUXE

Delete Fonts

File Backup

Removing Existing Applications

Shared DLLs

Troubleshooting and Support

ASHAMPOO 99 DELUXE for Windows^(R) 95, 98 and NT
(c) 1996-99 HILCHNER & LESANI Verlag GmbH
Author: Bernd Klaiber EDV-Beratung

Default Selections

The first time you start ASHAMPOO 99 DELUXE it displays a set of default selections that are quite effective for most purposes. If you want to monitor other sections as well you must select them manually. You can always reset the selections to these default values by selecting **Reset Selections** in the **File** menu.

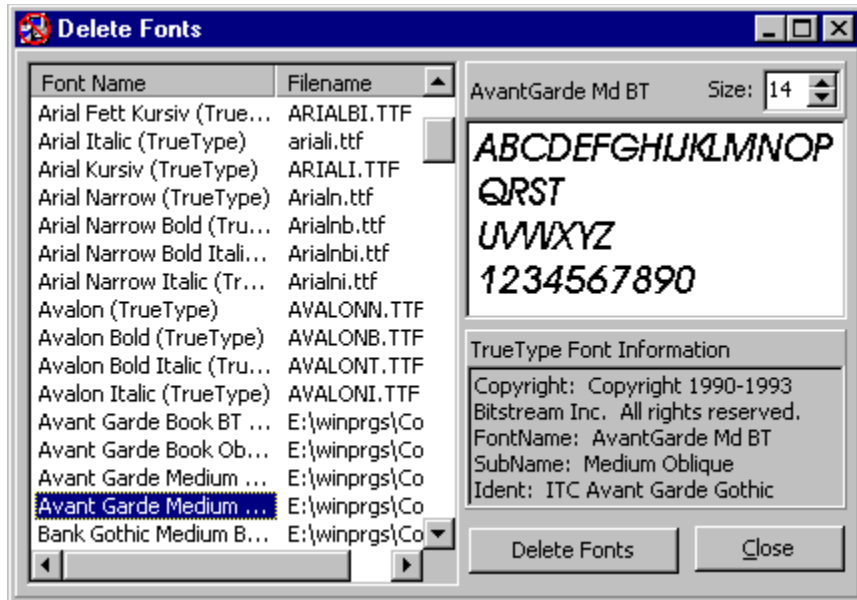
NOTE: The default settings automatically exclude the *HKEY_LOCAL_MACHINE\System\ControlSet00x* branches. These branches are copies of *...\CurrentControlSet* that are sometimes generated and renamed when Windows reboots. (In Windows NT this is the "last known good configuration"). Monitoring these branches doesn't usually serve any useful purpose and selecting the branches manually is not recommended. Whatever else you do, please **don't** delete or modify any of the settings under *HKEY_LOCAL_MACHINE\System\ControlSet00x* as this will crash your system. In some cases you may not even be able to reboot afterwards!

ASHAMPOO 99 DELUXE doesn't normally report any changes in these branches. This makes it possible for ASHAMPOO to handle system crashes during installation routines without any problems, as these entries are normally written by Windows after crashes.

If you need to monitor the contents of these entries you can select *HKEY_LOCAL_MACHINE\System\CurrentControlSet* instead. (This is also included in the default selections.)

Delete Fonts

This function displays all the fonts currently installed on your system and allows you to delete them.



The installed fonts are displayed alphabetically in the list on the left. The windows on the right show you what the font looks like and display additional information on the font (TrueType only).

The text in the sample window is editable. If you would prefer to have another text just enter it in the window and it will be stored automatically as the new default when you exit.

Deleting fonts is actually pretty intuitive: Just select one or more fonts and click on **Delete Fonts**.

Dual-boot Windows NT / 9x Systems

If you have a dual-boot system running **both** Windows NT **and** Windows 95 or 98 it is advisable to install ASHAMPOO 99 DELUXE in separate folders under each operating system. Otherwise, ASHAMPOO will become confused because the contents of the config and log files created under one system will not match the current structure of the registry. You will also get completely meaningless results if you inadvertently try to compare the configurations of two different systems, which can happen if you are running ASHAMPOO from the same folder under both systems.

This is all the more important on systems with Windows 95/98 and Windows NT installed on the **same** partition, which is quite possible on FAT16 drives. On such systems you have to take particular care to only select items and folders belonging to the relevant operating system.

Since dual-boot systems are normally only used by experienced users we assume that you know what you are doing and understand the issues involved here!

Exporting and Printing Log File Data

You can export all the monitoring data stored in your log files to plain text files for archival and printing.

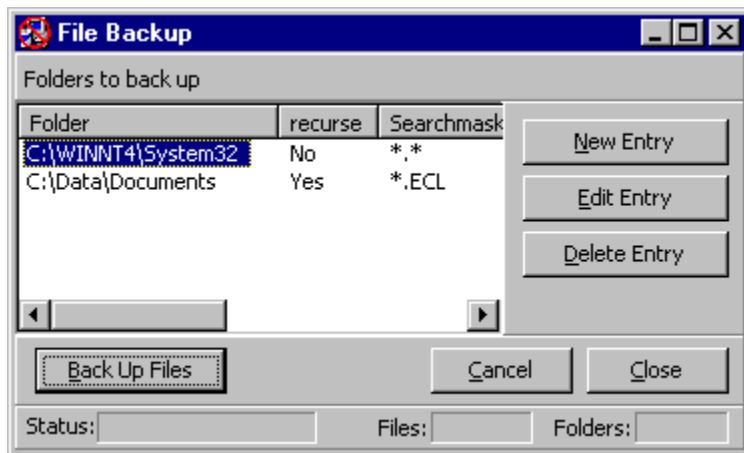
Just right-click on an item or tree in any of the **View Log File** tabs and select **Export Data** to write that item's data to a text file that you can edit and print with Notepad or a word processor.

Note: A brief explanation of the entries is inserted as a header at the beginning of each export file.

File Backup

Usually, ASHAMPOO 99 DELUXE only monitors files, i.e. it simply watches and records what happens to them. If a file is deleted or overwritten this is recorded in the log file but you can't restore the deleted or overwritten file. The problem is there's no way of knowing in advance which files will be deleted or overwritten, and to provide restore functionality it would be necessary to back up the entire hard disk. As you can imagine, this isn't really a very practical option.

However, there are some files that are so important for the system that it makes sense to back them up by default, as insurance just in case an application deletes or overwrites them -- for example the vital system files located in `..\\Windows\\System32`.



You can specify the folders you want ASHAMPOO to back up in the File Backup dialog shown above. Select **New Entry**, then enter your search criteria in the dialog displayed. In addition to specifying the folders you can also enter a search text using wildcard characters to include only files from the defined folders conforming to the criteria defined in your search text.

Then select **Back Up Files** to start the backup. All the files conforming to your criteria will then be copied to the backup folder.

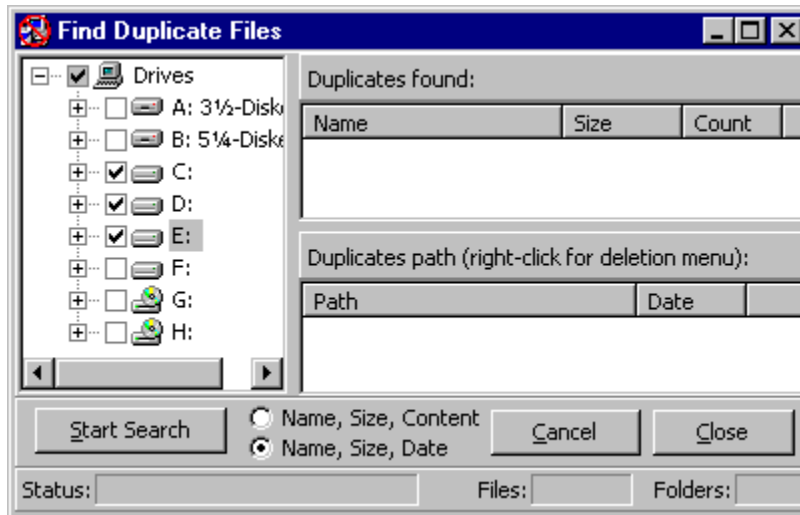
If any of these files is then deleted or overwritten by an installation you can restore it from the backup folder.

Note:

You can set the backup folder in **Settings**. See [Preferences](#) for full details.

Find and Delete Duplicates

ASHAMPOO 99 DELUXE can also detect and delete redundant duplicate files on your system. The search algorithm is very fast -- ASHAMPOO can easily process 50,000 files in 3,000 folders on 5 hard disks in just a few seconds.



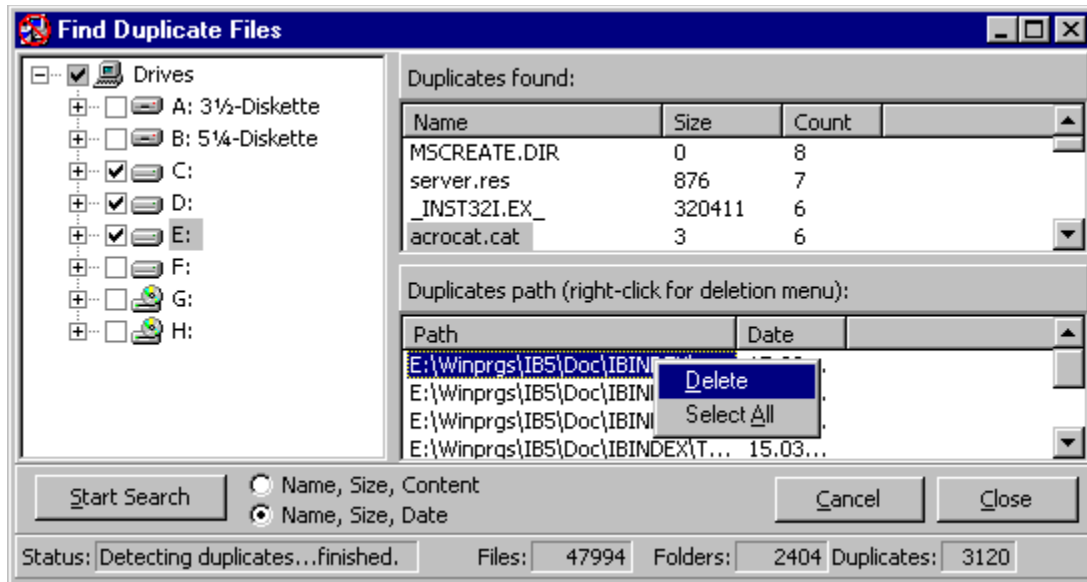
Procedure:

1. Select the drives or folders you want to search for duplicates by clicking in the appropriate check boxes in the left-hand window.
2. Select the search type:
 - a) **Name, Size, Content** (very accurate) or
 - b) **Name, Size, Date** (very fast).

Method a) identifies files as identical if their name and content (including size) are the same. This method is very accurate but it can take a while because the program has to scan all the files from beginning to end.

Method b) identifies files as identical if their name, size and date are the same. This method is very fast and perfectly adequate in most cases.

3. Select **Start Search** to start the search. ASHAMPOO first scans and sorts all the filenames in the selected locations. Then it searches for files with the same name, after which it compares the individual files to check whether they are identical or not.



4. The results are displayed in the two windows on the right. Clicking on a filename in the upper window displays the paths of the duplicate files with this name in the lower window.
5. Right-click on the file you want to delete to display the deletion menu. You can also select and delete multiple files.

Notes:

You can sort the list by double-clicking on the column headers in the upper right window (same functionality as in Windows Explorer). This makes it very easy to see where the most space is being wasted.

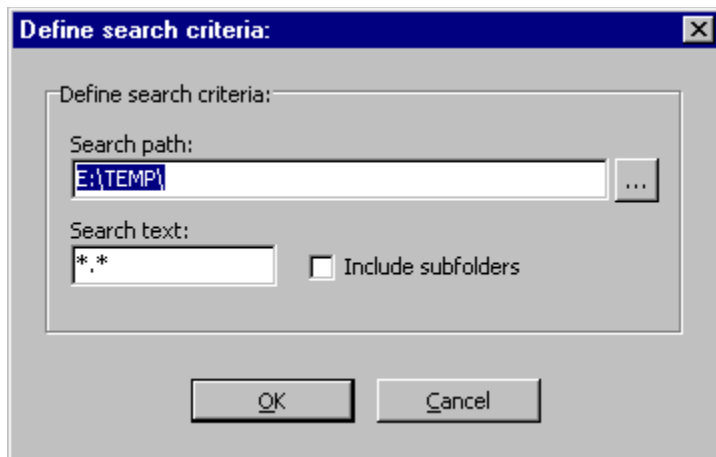
You can also use the keyboard shortcuts *Alt+A* (select all) and *Del* (delete) in the lower window.

Find and Delete Temporary Files

This function enables you to detect and delete all temporary files stored on your system in one simple procedure.

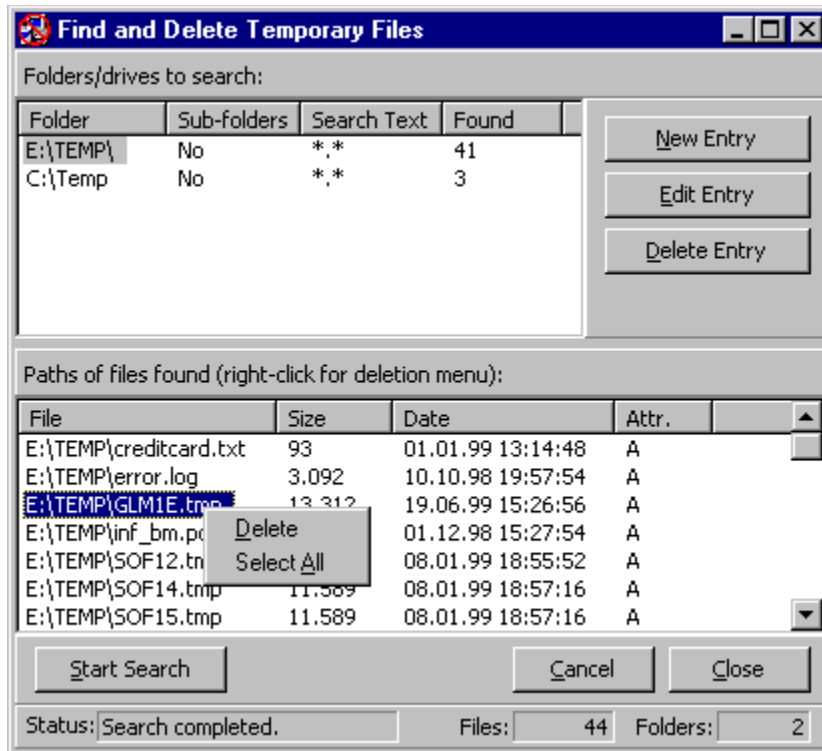
Search performance is very accurate because you can define your own multiple search criteria telling ASHAMPOO exactly what you want to search for and where you want to search. These criteria are stored as defaults and displayed automatically every time you select the function.

The first time you select the function the only default entry is the standard Windows TEMP folder. To add other items just click on **New Entry**:



The above example will find files with the *tmp* extension (*.TMP) on drive C:, including the root and all subfolders.

Here are a few more examples of possible search entries:



When the search is complete (**Start Search**) ASHAMPOO displays all the files that match your search criteria. Click on the entries in the upper window to display the items found for each search entry in the lower window. You can then right-click on items in the lower window to display the deletion menu.

Notes:


You can sort the list by double-clicking on the column headers in the upper right window (same functionality as in Windows Explorer). This makes it very easy to see where the most space is being wasted.

You can also use the keyboard shortcuts *Alt+A* (select all) and *Del* (delete) in the lower window.

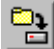

Getting Started

ASHAMPOO 99 DELUXE is a very user-friendly program designed to be as easy as possible to use.

This version of ASHAMPOO 99 DELUXE includes an easy new "two-button" system providing direct access to the main procedures performed by the program. It is advisable to use this system at first until you have learned the basic principles underlying the program. (See [Quick Two-Button Operation](#) for details.)

If you want you can follow this introduction with the help of the Step-by-Step Wizard , which will guide you through all the procedures described below.

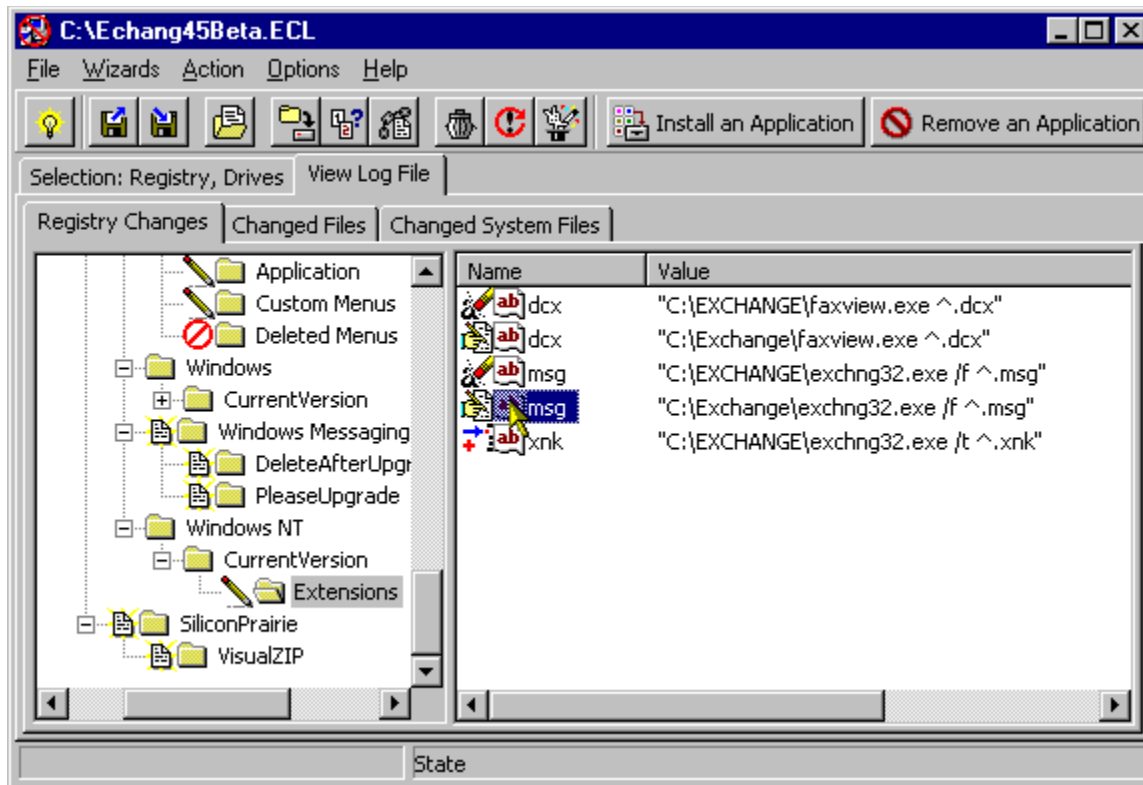
The ASHAMPOO 99 DELUXE workplace is divided into two main windows (see [The Two Program Windows](#))

1. The first step is to choose the items you want ASHAMPOO to monitor in the left window (see [Selecting](#)). The default selections are a good choice for most purposes. When you exit the program the selections made are saved and reloaded automatically the next time you start. The first time you use the program this is done automatically. After this you will be asked whether you want to save your selections every time you exit the program.
2. Next you need to store a "snapshot" of your computer's current configuration with . This enables ASHAMPOO to register the changes made when you install new software. This means that you should always do this **before** installing a new application or making changes to your system configuration (ASHAMPOO can also be used as a "rescue system" to recover from unwise configuration modifications). ASHAMPOO needs this configuration log to be able to detect the changes made by the installation program.
3. You can then install a new application or edit your Windows configuration. ASHAMPOO **doesn't** have to be running while you do this! Once you have stored your configuration snapshot you can exit ASHAMPOO and even reboot your computer if you want.
4. Then restart ASHAMPOO and select  to store an image of the **new** configuration and compare it with the previous one recording the system state before the installation (see 2. above). Clicking this button accesses both the store and compare functions. You will be asked to specify a filename for the comparison.

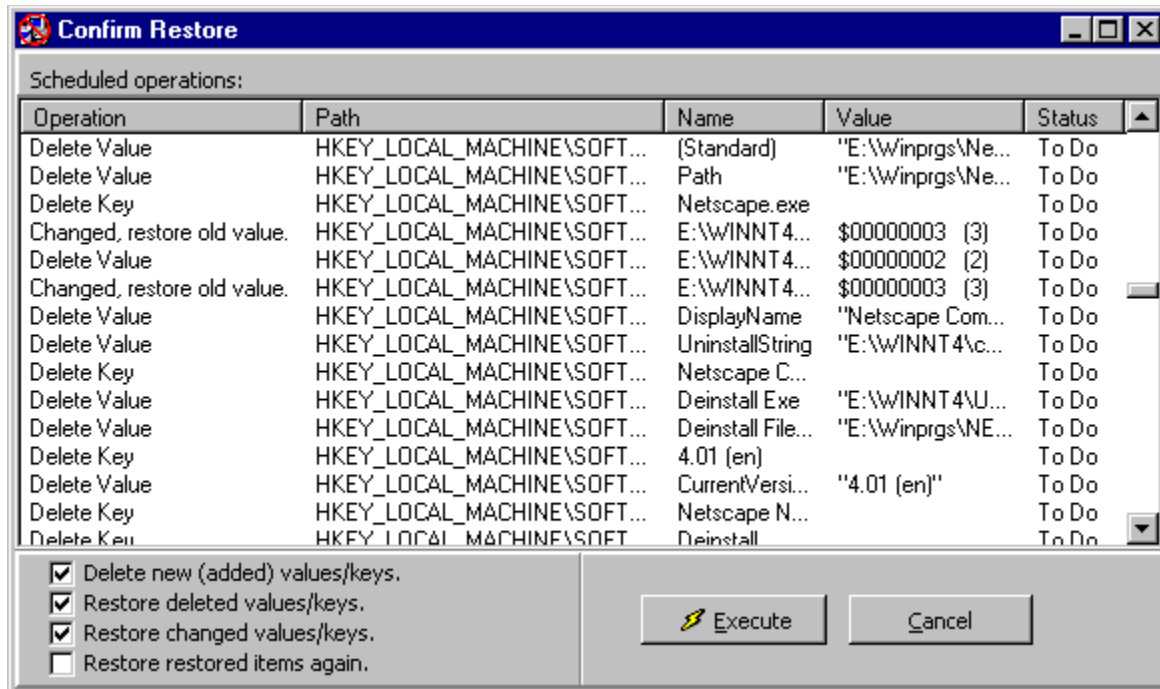
We generally recommend performing this step directly after installing a new application, as this keeps the list of changes short and ensures that only the changes really made by the application program are included. You can even perform the comparison a week later if you want, but then the list of changes found can get very long and its contents are less meaningful.

Note: Many applications write their final configuration information the first time you run them and not during the installation process. This means that it's always a good idea to run your new application at least once before performing the comparison. See [Running Applications after Installation](#).

5. All the changes found are then displayed on the screen (switch to the **View Log File** tab if it is not displayed automatically):



If you want to restore original values or delete a file or folder just right-click on items in the right window or tree elements in the left window. You can select multiple items in the right window. ASHAMPOO then displays a pop-up menu. Select **Restore Changes** in this menu to display the following screen listing all available restore operations. (ASHAMPOO always displays a list of all the actions to be performed before actually performing an operation.)




This window shows a detailed list of all the actions ASHAMPOO can perform to remove the application and restore your original system status.

You can also choose individual items or single groups of operations -- for example if you want you can just restore the changed keys/values (check box).

After checking everything and making your choices click on **Execute** to restore your old configuration.

The status of each operation is displayed on the screen so that you can confirm that the restore has been performed correctly.

You can get much quicker results by clicking the **Restore All** button . However, this option should be used with extreme caution as it automatically restores all changes! After a prompt with which you can select categories the list box shown above is displayed. When you select **Execute**, *all* changes in the selected categories will be restored automatically -- you cannot make any other selections.

WARNING: Restoring changes blindly without checking first can cause system crashes or other problems. Please only use this function if you're really sure you know what you're doing. You have been warned!

That's it. Easy, isn't it?

Introduction

In addition to the instructions for using the program this help file also explains the basic concepts underlying the program. Some of these explanations may seem a little complex and tortuous at first -- this is due to the nature of the material. Deinstalling Windows applications fully and cleanly is a complex process that can't be described in a few sentences. Please bear with me, I think you'll find that it's worth it. When you're through, you'll also find that you have a much better understanding of how your Windows system works.

You're probably aware that other deinstallers offer "one-click" application removal. All you have to do is select the application, click a button and that's it. However, you probably also know where this "one-click" approach leads and the problems it can cause.

This program is different. ASHAMPOO 99 DELUXE tells you exactly what it's doing and gives you full access to all the information about what's going on in your system. You can also click on a "Remove All" button if you want, but you do so knowing exactly what you are doing and what the consequences can be.

Unlike other deinstallation products ASHAMPOO doesn't promise to perform miracles. It shows you what's going on, tells you what's possible -- and what's not -- and gives you the tools to do what's possible.

I want to give you a look behind the scenes so that you can understand how deinstallation works, what's possible and what's not possible.

Bernd Klaiber
(The Author)

Menu Commands

This section only contains detailed descriptions of the menu commands not included in the toolbar. For full details on the commands included both in the toolbar and the menus (commands shown below with icons) please see [Toolbar Commands](#). Some of the more complex commands are also discussed in detail in separate topics (just click on the links to see these topics).

[File Menu](#)

Load Selection: 

Save Selection: 

Reset Selections:

Resets all selections to ASHAMPOO's default values. Your current selections are normally saved in *LAST.ECS* when you exit the program and restored automatically the next time you start. See [Default Selections](#).

Restore Saved Config File:


It's possible to delete the config file accidentally if you execute **Store Current Configuration** instead of **Compare** after installing an application. If this happens you can still recover the old config file with this command and perform the compare to create the log file.

[Wizards Menu](#)

Start Wizard: 

Install an Application:  Install an Application

Remove an Application:  Remove an Application

Restore All:  (Careful with that axe Eugene!)

[Action Menu](#)

Save Current Configuration: 

Compare (create logfile): 

Incremental Compare: 

Find and Delete Duplicates: See [Find and Delete Duplicates](#)

Find and Delete Temporary Files: See [Find and Delete Temporary Files](#)

Backup Files: See [Backup Files](#)

Delete Fonts: See [Delete Fonts](#)

Delete Existing Applications: See [Delete Existing Applications](#)

Advanced / Save Configuration As:

This is a powerful function designed for advanced users. Normally, ASHAMPOO automatically stores your current computer configuration in the file *OldCfg.ECD* and the configuration used for comparison after installing an application in *NewCfg.ECD*. Together with **Compare Configurations** this command enables you to save your entire computer configuration in a file of your own choice and compare it with another configuration from a much later date.

Advanced / Compare Configurations:

Use this command to compare any two configurations saved with **Save Configuration As**. This makes it possible to monitor and review changes to your system over very long periods. This is very useful for troubleshooting and maintaining a fully functional system. For example, it's always a good idea to save a configuration when everything in the system is working perfectly. Then if you encounter difficulties -- for example if your e-mail system suddenly stops working properly -- you can save a new configuration and compare the two to localize and correct the cause.

Refresh View: 

[Help Menu](#)

Help: Activates this online help system (also available with **F1**)

About: Displays the ASHAMPOO version number and copyright information.

Register: Displays the dialog for entering the registration key you receive when you register the program.

New Features in ASHAMPOO 99 DELUXE

Even though the DELUXE edition of ASHAMPOO is the first version published in English (this was originally a German program) you may still find it interesting to know just how many features we've added since the last German release:

- Correct handling of Shared DLLs:
- Faster registry and file compare for log file generation (particularly with larger numbers of selected items)
- Bugfix: When restoring empty registry entries ASHAMPOO now writes a null string instead of '(empty)'.
- Restored log file items are now displayed grayed and they are only restored once, even if you choose the same item twice.
- An error message is now displayed when you attempt to delete non-existent registry items.
- Recursive handling of subfolders in the log file now works much better.
- New automatic check to prevent selection of duplicate registry keys (e.g. *HKEY_CURRENT_USER* and *HKEY_USERS*, which often contain duplicate entries). See Selection Issues for more details on this.
- No more errors in *HKEY_DYN_DATA* (CreativeLabs bug, Win95/98 only).
- The irritating save prompt displayed when you exit ASHAMPOO 99 DELUXE now only appears if you really have made changes to the selection.
- ShellExecute for files in the selection and results windows (open/execute files with double-click).
- Accidentally overwritten config files can now be restored (see Menu Commands).
- System DLLs are now backed up automatically and can be restored after deletion or replacement (see File Backup).
- You can now also view and delete installed fonts (see Delete Fonts).
- Implementation of MultiThreading has drastically reduced the time taken to store configuration data, actually halving the time required to store the configuration under optimal conditions.
- ASHAMPOO 99 DELUXE can now also help you to efficiently delete existing applications for which you do not have an ASHAMPOO installation log (see Removing Existing Applications).
- New wizard that gives you direct access to the main functions of ASHAMPOO 99 DELUXE, guiding you through the procedures one step at a time.
- Welcome Screen (not really earth-shaking, but kind of nice all the same).

We plan to continue improving ASHAMPOO 99 DELUXE to make it even better and more powerful. Please help us by sending us tips, bug reports, criticism and praise (this helps to motivate us) to the e-mail address listed in Troubleshooting and Support. Also, please support the shareware concept and register this program so that we can continue to develop new features for you in the future.

Note for Windows NT Users

ASHAMPOO 99 DELUXE is fully functional under Windows NT. It has been tested thoroughly under Windows NT 4.0. It should also work under NT 3.51 but it hasn't been tested under this system.

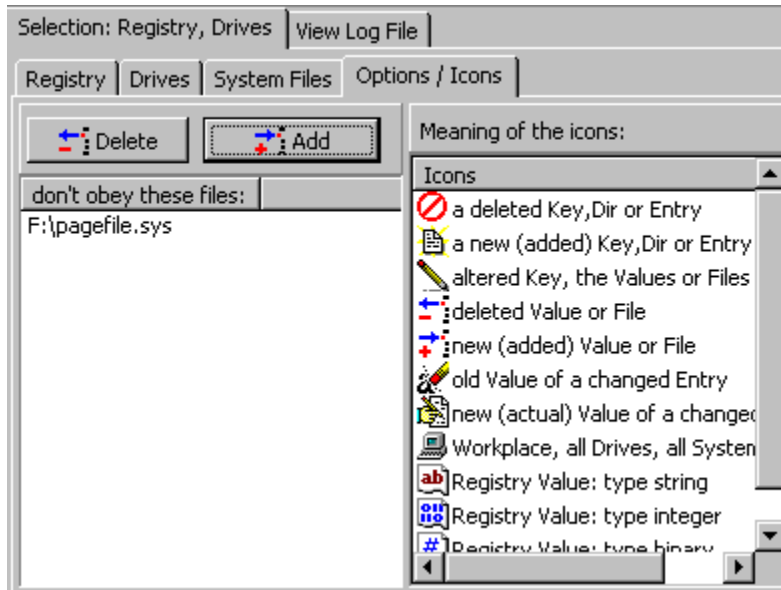
It's important to remember that NT's enhanced security features also apply to the registry. This means that NT may occasionally refuse to allow you to restore a registry entry with ASHAMPOO because you don't have the necessary permissions for the required operations.

This problem can usually be solved by logging in as ADMINISTRATOR before running ASHAMPOO.

Preferences

There are two options sections in ASHAMPOO 99 DELUXE. The first is the **Options / Icons** sub-tab in the **Selection: Registry, Drives** tab:

Options / Icons Tab



This section enables you to specify individual files that you don't want ASHAMPOO to monitor. This is needed because the selection options only allow you to select or deselect entire folders and directory trees.

For example, although you will usually want to monitor your Windows directory there are some files that are changed very often by Windows, such as the Windows swap file WIN386.SWP or PAGEFILE.SYS, and it's a good idea to exclude these as monitoring them doesn't make any sense. Just click on the **Add** button and select the files you want to exclude.

You can also add files to the Excluded Files list by right-clicking on the filename in the **Drive Selection** tab window and clicking on the option in the pop-up menu. Use this method for adding large numbers of files at the same time or if you encounter problems with the **Add** button in the **Options** tab (Windows will sometimes refuse to allow you to add files with the Add button if they are currently in use).

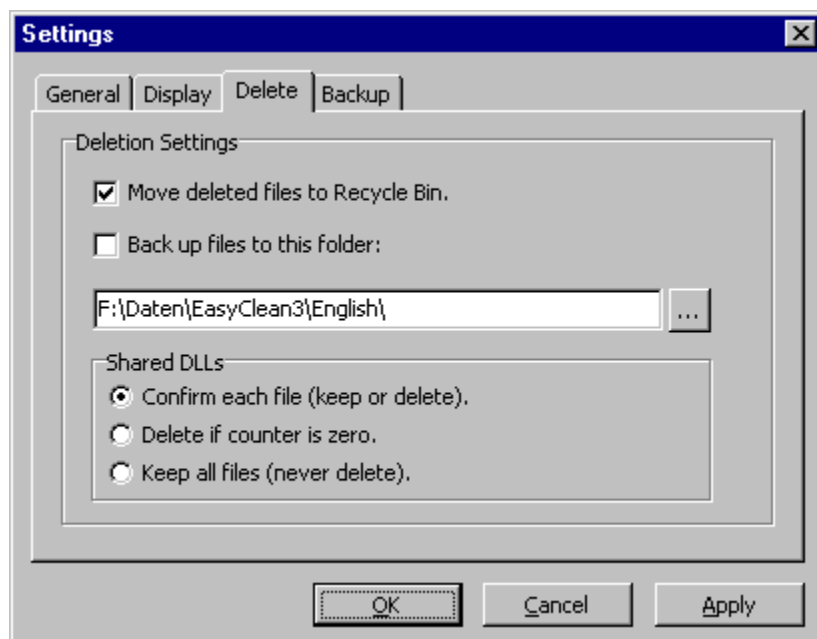
IMPORTANT NOTE:

The Excluded Files list is always saved automatically together with the log file when you perform a Compare. This also means that loading a log file **overwrites** the current list with the list used to generate the log file -- please remember this when loading log files!

For the same reason it's generally a good idea not to save your current selections every time you exit ASHAMPOO; it's better to only save selections that include those things that you always want to monitor and/or exclude!

Settings

The second options section is **Settings** in the **Options** menu. Selecting this command displays the following dialog box, which contains options with which you can adjust a number of the basic settings in ASHAMPOO 99 DELUXE to suit your personal needs and preferences.



General

Path to your *autoexec.bat* and *config.sys* files if they are not stored in the default location (C:\). Strings to be displayed for standard keys and empty keys in the Windows registry.

Display

Options for changing the colors of some display elements. These changes are purely cosmetic and don't really serve any practical purpose. You can also activate or deactivate the tooltips displayed when you position the mouse pointer over elements on the screen.

Delete

These options control the way the program deletes files and shared DLLs. Unlike the last tab, the choices you make here can have very serious consequences. Please consider what you are doing carefully before changing anything here!

You can choose to move deleted files to the Recycle Bin (default) or store them in a separate directory, for example on another drive or partition. ASHAMPOO then moves the files it deletes to the specified location. If you choose a directory ASHAMPOO will recreate the subdirectory structure of the deleted files within the target directory, using the name of the active log file as the root.

Example:

Backup folder: 'C:\ASHAMPOO 99 DELUXE'

Active log file: 'aol_access.ecf'

File to delete: 'C:\windows\test.dll'

File is moved to: 'C:\ASHAMPOO 99 DELUXE\aoi_access\C\windows\test.dll'

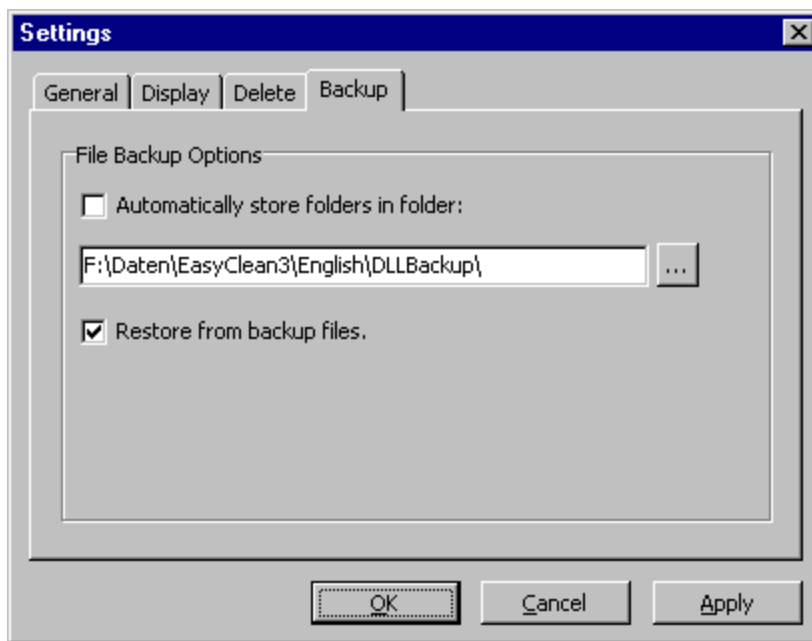
Warning: If you uncheck both these options ASHAMPOO will simply delete the files without creating a backup in the Recycle Bin or a backup directory!

Shared DLLs:

This section enables you to specify how ASHAMPOO handles shared DLLs. See Shared DLLs for a detailed discussion of this topic.

Backup

This tab contains the options for for the **File Backup** function in the **Action** menu. If you check **Automatically store folders in folder:** the files selected in File Backup will be backed up automatically every time you select **Save Current Configuration**. You can also specify the folder to be used for these backups. If you are using Windows NT it is advisable to use a compressed folder for this.



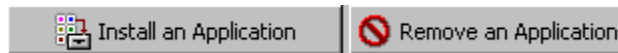
If you check **Restore from backup files** ASHAMPOO will try to restore from these backup files. See File Backup for more details on this topic.

Notes:

All these settings are automatically saved as defaults when you select **OK** to exit the dialog. Window sizes, toolbar positions etc. are all saved automatically every time you exit ASHAMPOO and reloaded when you restart the program.

Quick Two-Button Operation

In addition to giving you full, hands-on access to all deinstallation options and tools, ASHAMPOO 99 DELUXE also provides a simplified two-button operation concept for the two basic tasks you will want to perform:



Install an Application

Clicking on this button starts the installation Wizard that guides you through the steps of installing a new application with an installation log that will enable you to remove it completely later if necessary.

There are four steps in this process. Each step is represented by one tab in the Wizard window.

1. The first step is to select the items you want ASHAMPOO to monitor. The default selections made by the program when you first start it are good for most purposes. You can restore these defaults now by clicking on the **Automatic Selection** button. (The same defaults can also be restored with **Reset Selections** in the **File** menu.)

If you want to change the defaults -- for example if you're not installing your application on drive **C:** or for other reasons -- click on **Select Manually** to switch to the main ASHAMPOO window. Make your changes, then click on the light bulb icon in the toolbar or the **Install an Application** button to return to the Wizard.

2. The next step is to save your current configuration to a config file, which will be used later to identify the changes made to your system by installing the application. Click on **Next** to switch to the Save Configuration tab, then click on the **Save Configuration** button to store your current configuration in the config file.
3. You can then switch to the Windows Explorer to install your new application. To do this, either click on **Switch to Explorer** or exit ASHAMPOO and start the Explorer yourself. ASHAMPOO *doesn't* need to be running while you are installing the application -- you can even reboot the computer first if you want!

IMPORTANT: After installing your new application please remember to run it at least once before returning to ASHAMPOO to generate the log file (see [Running Applications after Installation](#) for details).

4. After installing your new application and running it once, close the application and restart ASHAMPOO. Click on the light bulb icon or the **Install an Application** button to restart the Wizard, then select the **Create Log File** tab if it isn't already displayed.

Click on the **Create Log File** button to store the new configuration and compare it to the one stored before installing the application. You will be asked to enter a name for the log file -- it's a good idea to use the application name to make the file easier to find later.

If you want you can also perform this comparison later. However, it's actually best to do it

immediately after installing an application and running it once, otherwise there's no way of knowing which program is responsible for all the changes found. Also, the longer you wait the longer the list of changes will get, and going through it to find the changes made by the application can be very tedious.

The changes found will now be displayed automatically in the View Log File tabs in the main ASHAMPOO window. You can now exit ASHAMPOO -- you don't need to save the changes information manually, it is all stored in the log file automatically.

The above steps in the Wizard are the same as performing the following manual operations:

1. ● or **Action / Save Current Configuration** to save the current configuration to a config file.
2. Install the new application.
3. ● or **Action / Compare (create log file)** to compare and generate the log file.

Remove an Application


Select this button to start the Wizard for removing an application.

In the first tab click on **Load Log File** and select the log file created after installing the application you want to remove (using the procedure described above).

After loading the log file click on **Next** to switch to the **Restore Previous Configuration** tab. You now have two options:

1. **Semi-Automatic Deinstallation:** This is the recommended option. Clicking on this button switches to the **View Log File** tabs in the main program window, where you can review the entries and decide which items you wish to delete/restore.
2. **Automatic Deinstallation:** Use this option at your own risk! Selecting this button will restore ***all*** changes recorded in the log file and may delete items you would actually prefer to keep. Only choose **Automatic Deinstallation** if you are really sure you know what you're doing. **You have been warned!**

These steps are equivalent to performing the following manual operations in the main program window:

1.  or **File / Load Log File** to load the log file stored for the application you want to remove.
2. ● or **Wizards / Restore All** to remove all changes recorded in the log file.

Selecting the **No Log File** button starts the wizard for removing applications not monitored with ASHAMPOO 99 DELUXE. Please see [Removing Existing Applications](#) for details.

Quick-starting ASHAMPOO 99 DELUXE

You can quick-start ASHAMPOO 99 DELUXE by double-clicking on a selection file (*.ECS) or a log file (*.ECL) in the Windows Explorer. The file you click on will then be loaded automatically when ASHAMPOO is executed.

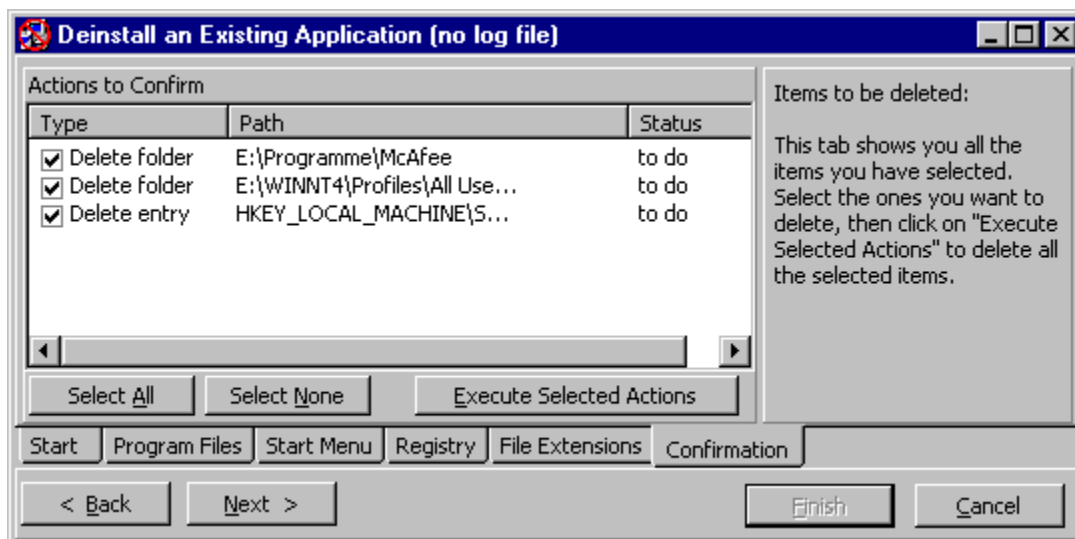
Removing Existing Applications

ASHAMPOO 99 DELUXE can also help you to remove existing applications from your system -- i.e. applications installed **before** ASHAMPOO 99 DELUXE, for which you don't have an installation log.

Although ASHAMPOO 99 DELUXE delivers excellent performance here -- provided you know what you're doing -- we have to point out that it **is** possible that not all parts of applications removed in this way will be deleted. There are simply too many places where programs can park parts of themselves and their settings. If you try to get a 100% removal rate without a log you run the risk of doing more damage than good, and we prefer to err on the side of caution. All we can do is look and delete in the usual places and hope we got 'em all.

After long and careful consideration we have opted for a semi-automatic approach that lets you see and choose the items to be deleted. We could have made it fully automatic but this would have been too risky -- it would be much too easy to delete files that your system still needs.

In a step-by-step process ASHAMPOO guides you to all the places where parts of applications are normally found. You can then select the items you want to delete, supported by suggestions from ASHAMPOO. At the end of the process a summary is displayed so that you can review your choices before actually performing the deletions.



Important Warning:

This ASHAMPOO 99 DELUXE module is designed for advanced users and assumes that you know what you're doing! The functions provided here give you direct access to your application and system files. This means that if you're not careful it's quite easy to delete files that are still needed by the system or applications.

Use at your own risk -- we cannot provide support for problems or errors caused by use of this module!

YOU HAVE BEEN WARNED!

Restored Entries

Entries that have already been restored are displayed with their icons grayed out, like this:



In this example the two lower entries have been already restored (grayed icons). Normally, grayed entries are automatically skipped when you perform a restore, even if they are selected.

If you want to restore such items you must select the check box in front of **Restore restored items again** in the Confirm Restore window that is displayed when you select **Restore Changes** in the pop-up menu.

Running Applications after Installation

After installing a new application you should always run it at least once before restarting or returning to ASHAMPOO 99 DELUXE. The reason for this is that many programs do not perform all their configuration work during installation -- many important settings and options are only written the first time the program is run. Running the program once makes it possible for ASHAMPOO to log these changes as well, which can improve deinstallation performance when you remove the application later.

Once you have run the application and performed any necessary configuration work you can return to ASHAMPOO and select **Compare** to generate the log file.

Important Note:

Playing around with all the functions of a new program is often absorbing and fascinating. However, please **don't** forget to return to ASHAMPOO 99 DELUXE to create the log file after exiting the new application! If you don't generate a log file before making any other changes to your system you won't be able to deinstall the application properly later.

Selecting

The first step is to select the drives and/or individual items you want to monitor. To select or deselect items simply click in the check boxes to the left of the item names in the left-hand program window. Selected items are identified by checks in the check boxes.

Note:

Selections made in the **Selections:** tabs apply *both* for configuration saving *and* for comparisons (generating log files). However, it's important to understand that when you select **Save Current Configuration** ASHAMPOO only saves configuration information for drives, registry trees etc. containing *at least one* selected item (indicated by a grayed check box) -- but it then saves *all* the information for that drive or tree.

This means that you cannot add items from a drive or tree that was not selected between saving your configuration and making a comparison -- or rather, you can, but there will be no data to compare it with in the config file. For optimum performance, don't change your selections between saving your configuration and comparing.

For additional information on this subject please see [Selection Issues](#) , [Default Selections](#) and [User-defined System Files](#).

'Don't Check Next Time'

After you have performed a comparison you can quickly exclude sections and items from the next check by selecting **Don't Check Next Time** in the pop-up menu that appears when you right-click on objects in the **View Log** tab windows. It's a good idea to use this function to exclude keys like *HKey_Current_User\ Software\ Microsoft\ Windows\ CurrentVersion\ Explorer\ RecentDocs* as these changes are caused by Windows itself, not by the installed application.

Selection Issues

ASHAMPOO 99 DELUXE allows you to selectively define the sections of your system configuration that you want to monitor for changes.

This makes ASHAMPOO very powerful, but it also means that you have to know what you are doing. If you don't select any items ASHAMPOO won't report any changes. It's that simple.

Hint: Try holding down the **Ctrl** key when expanding or collapsing registry branches. This expands and collapses the tree recursively, including all sub-branches of the item you are clicking on along with their sub-branches and so on. This is very useful in the **View Log** tabs but it can take quite a while in the **Selection** tabs, particularly if you use it to expand the entire registry!

Notes:

It's normally a bad idea to try to monitor **both** *HKEY_USERS* **and** *HKEY_CURRENT_USER* at the same time. When programs change the registry in the *HKEY_CURRENT_USER* section the same changes are always performed automatically in *HKEY_USERS\active user*'. If ASHAMPOO then tries to change both changes, which it will do if you monitor both sections, this can lead to unexpected effects because of the mutual interaction between the two sections.

Because of issues like this you should always select the critical branches and review the changes that the program plans to make before executing them. If you right-click on the root to remove all changes you may experience strange and undesirable effects like that described in the scenario above!

Shared DLLs

Most Windows programs use "shared DLLs". These are binary files with the extension .dll, which stands for Dynamic Link Library. They are used to store program code for functions that can be accessed and used by several programs.

Here's an example of how this works in practice, and what this means for application installation and removal:

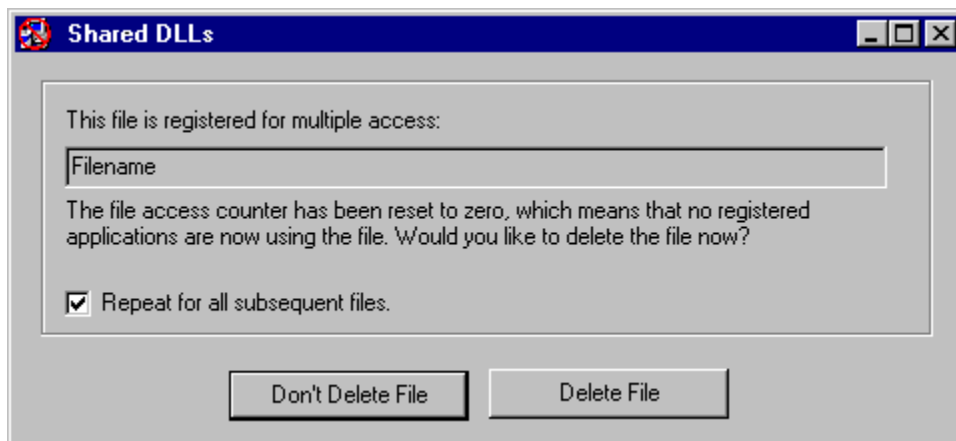
Application A uses a generic sound function file called *DSound.dll*, which it copies to your Windows directory when it installs itself to your hard disk. So far so good: one program, one DLL.

Then you install another application, application B, which also uses *DSound.dll*. Application B's install routine looks in the Windows directory and finds that the file already exists. After checking that this file is the latest version the install routine skips the file, since it is already present.

OK, but now you have two applications using one DLL. What happens if you want to remove one of them? Windows handles this problem by storing a registry entry for each DLL with a counter that records how many applications are using the DLL. Every time a new application that accesses the same DLL is installed the counter is incremented by one. When one of the applications is removed the counter is (hopefully!) decremented by one. When the counter reaches zero this means that no more applications are using the DLL and it can be deleted.

How ASHAMPOO 99 DELUXE handles shared DLLs:

1. When you restore the Windows registry using the log file created when you installed the application the counter of the shared DLL is not restored to the previous value, because you may have installed other applications using the same DLL in the meantime. Instead, the counter is decremented by the same value it was incremented by when the application was installed. If this sets the counter to zero a prompt is displayed asking whether you want to delete the file:



You can configure ASHAMPOO's default handling of shared DLLs with **Settings** in the **Options** menu. See [Preferences](#) for full details.

2. If you try to delete a file (using a log file) whose counter was incremented by the same log file the following dialog will be displayed:



This warning won't appear if the file's access counter has already been decremented. Then the file is skipped (i.e. not deleted) automatically and a message is displayed in the log window when the operation is finished.

Summary:

Handling shared DLLs is a bit complicated but ASHAMPOO 99 DELUXE takes most of the work out of it. The defaults are safe, making sure that DLLs still needed by the system are not deleted.

IMPORTANT WARNING:

NEVER try to use **both** an application's own uninstall routine (see What About Applications' Own Deinstallers?) **and** ASHAMPOO 99 DELUXE together! If you do they will both decrement the shared DLL access counters, which will result in incorrect counter values and may lead to the deletion of DLLs that are still needed by the system!

Note:

Like so many things that are a good idea in theory, the DLL access counter mechanism sometimes doesn't work all that well in practice. There are two basic problems: Some installation routines don't bother to increment the counters, and other installation routines increment the counters again and again if you install the application more than once. As you can imagine, the result can be counter values that are not really very meaningful.

If in doubt, it's always best to keep DLLs rather than deleting them. After all, hard disk space is very cheap nowadays!

Take ASHAMPOO for a Test Drive

Follow these instructions to take ASHAMPOO 99 DELUXE for a test drive and see its powerful functions in action:

1. Start ASHAMPOO 99 DELUXE and select the items you want to monitor in the **Selection: Registry, Drives** tabs. If you want you can select **Reset Selections** in the **File** menu to set the selections to the system defaults. However, don't forget to include the drive(s) you want to use for installing your application -- only **C:** is selected by default! Then select **Store Current Configuration** in the **Action** menu or click on ●.
2. Exit ASHAMPOO and install a large application on your computer (something really extensive, like Office 97 or a graphics suite).

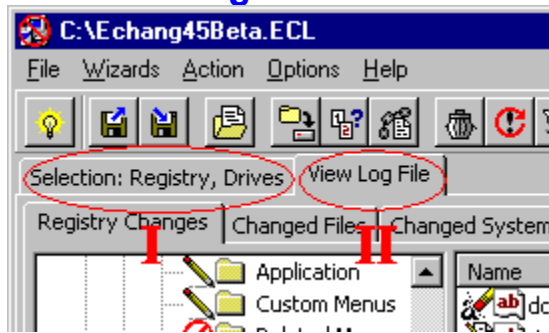
Important note: This must be the *first* time you are installing this software on this computer! Please *don't* try to use this method for reinstalling an application over an existing installation.

Then start the application at least once and perform any configuration work required. See [Running Applications after Installation](#) for details on the reason for this.

3. Exit the application, return to or restart ASHAMPOO and generate a log file by selecting **Compare** in the **Action** menu or clicking on ●. Use the name of the application for the log file to make it easier to identify it later. You can now view all the changes made to your system by the installation in the **View Log File** tabs.
4. Now for the fun part: Run the ASHAMPOO shipped with the application you have just installed and try to remove the application from your system with it.
5. Then reboot and select **Compare** or ● again to generate another log file. This will show you all the components of the application that the application's ASHAMPOO failed to remove. If there's not much left it was a good ASHAMPOO. Usually, however, you'll find that it has left behind an amazing number of files and registry entries. You can now use ASHAMPOO 99 DELUXE to remove these components as well.

Cool, isn't it?

The Two Program Windows



ASHAMPOO 99 DELUXE has two main screens, which are selected with the top two tabs on the left of the program window.

I: Selection: Registry, Drives This is where you select items that you want ASHAMPOO to monitor (see [Selecting](#)). This tab has the following sub-tabs:

- **Registry** -- The contents of the Windows registry (see [The Windows Registry](#))
- **Drives** -- All the drives installed in your computer with their directory trees and file structures.
- **System Files** -- Includes both initialization files *win.ini* and *system.ini*, and start-up files like *config.sys* and *autoexec.bat* (see [User-defined System Files](#))
- **Options / Icons** -- The list of files to be excluded from monitoring (see [Preferences](#)) and the meanings of the icons is shown here

To select a branch (key) just click in the check box to the left of an entry in the tree display. If the checkbox is grayed it means that at least one subkey is selected, but not all of them.

II: View Log File -- This tab displays the changes found by **Compare** and recorded in the log file. It is divided into three sub-tabs that correspond to the sub-tabs in the **Selection:** tab (see above).

To restore branches or individual items right-click on the corresponding entry and select **Restore Changes** in the pop-up menu. You can restore individual items in the right-hand window or branches or the entire tree in the left-hand window using this method.

The Windows Registry

Ever since the introduction of Windows^(R) 95 all configuration information previously stored in separate INI files has been centralized in the Windows "registry", which is a central database managed by Windows. In principle it's a good idea but it is also a source of new problems. Every application can write its own data to the registry, and often this means that your registry gradually fills up with data "garbage", particularly if you often try out programs and then remove them from your system.

The progressive growth of your registry slows down your system and wastes disk space. And since Windows always loads the entire registry into memory it also wastes your valuable RAM resources. For all these reasons, it's very important to make sure that all registry entries created by applications are deleted again when the programs are removed from your computer.

Many applications have their own deinstallers. Unfortunately, most of these are of the "quick and dirty" kind that leave a lot of garbage behind. If you want you can test this for yourself with the help of ASHAMPOO, then you'll understand what I mean!

There's no space here for a really thorough discussion of the registry. If you want to know more get a good book on Windows. Leading computer magazines like *PC Magazine* and *Byte* also frequently publish excellent basic articles on the registry and registry issues.

Note:

You don't have to monitor the keys in the *HKEY_Current_User* section if you are already monitoring *HKEY_Users* because the first section is a subset of the second.

Similarly, you don't have to monitor *HKEY_Classes_Root* separately because it is a subset of *HKEY_Local_machine*.

Toolbar Commands

The toolbar contains the following icons for quick access to ASHAMPOO 99 DELUXE functions:

- **Wizard.** Starts the Wizard that guides you through all of ASHAMPOO's main functions.
- **Load Selection File.** Loads a ASHAMPOO 99 DELUXE selection (*.ECS) file. These are files stored by the user containing sets of all the selections made in the **Selection: Registry, Drives** tabs. (see [Selection Issues](#) for additional details).
- **Save Selection File.** Saves your current **Selection: Registry, Drives** selections in an *.ECS file so that you can retrieve it later (see [Selection](#) issues for additional details).

Notes:

Loading an installation log file (see **Load Log File** below) automatically overwrites your current selections with the ones used to generate the log file. This enables you to check the selections used to generate the differences between the configuration before and after an application was installed. If you want to preserve the current selection you should thus always save it to an *.ECS file before loading a log file!

When you exit ASHAMPOO 99 DELUXE the program automatically asks you if you want to save your current selections as the default for the next program start. If you select **Yes** the selection settings are saved in the file *LAST.ECS*, which is overwritten automatically every time you select this function.



Load Log File. Loads a log file containing the results of a comparison. This is the file generated when you choose **Compare** after installing a new application. The file has the name you gave it when you performed the compare -- this will normally be the name of the application. It contains all the information ASHAMPOO needs to remove the application and restore your system configuration to its previous status.

Notes:

Loading a log file overwrites the current selections with the selections used to perform the comparison. This enables you to check the selections used to generate the log file. If you want to preserve the current selections you should thus save them to an *.ECS file before loading the log file.

- **Save Current Configuration** Writes the current configuration to the file *OldCfg.ECD* (automatically). Please always execute this function **before** installing new applications! This information is essential for determining the changes made to your system by the installation of the application. (NOTE: You don't need to execute this function when you use the **Incremental Compare** function .)
-

Compare Saves the current configuration to *NewCfg.ECD* (automatically), compares it with the previous configuration (*OldCfg.ECD*) and writes the results to a log file. You will be prompted to enter a name for the log file -- it is usually advisable to use the name of the application you have just installed so that you can find it easily if you decide to remove the application later.

• **Incremental Compare** This is almost the same as **Compare**. The only difference is that *NewCfg.ECD* is automatically renamed to *OldCfg.ECD* after the comparison is performed. This means that you don't have to store the current configuration again the next time you want to install an application. This feature is particularly useful when you are installing several applications at the same time. Please remember to perform a separate compare and write a separate log file after **every** installation so that you can remove the individual applications later. If you only do a single compare after installing all the applications you can only remove all of them together!

• **Refresh View** Refreshes and updates the contents of ASHAMPOO's windows. This function is also executed automatically every time ASHAMPOO is started so that you can see any new folders and registry keys and select them if necessary.

Notes:

New children of selected or grayed parent folders and keys are monitored automatically; you don't need to select them explicitly.


Refresh View only refreshes folders and keys. To update the list of drives please select **Reset Selections** in the **File** menu.



Restore All This is ASHAMPOO's "one-click deinstallation" option. Selecting this function restores **all** changes and restores the system to its previous state. This includes all changes to the registry, the file system and your system files. An information window will be displayed allowing you to confirm the operation before proceeding. If you're not sure select **Cancel** to abort.

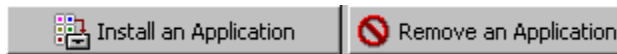
You can get the same results by right-clicking on the root entry in all the **View Log File** tab windows and selecting everything.

WARNING: Using this function carelessly can be very risky! It may delete files that you still need or restore values to the registry that can cause problems or trouble. Never use Restore All unless you are really sure that you know what you're doing. **You have been warned!**



To undo the changes made by the installation of an application or other modifications to your system and revert to the previous system status just right-click on an item in one of the **View Log File** tabs and select **Restore Changes** (works both in the tree view and list view windows). See [Getting Started](#) for further details.

- **Step-by-Step Wizard** Starts the Step-by-Step Wizard that guides you through the individual steps of ASHAMPOO's main functions.



These two tools provide direct access to the wizards that guide you through the installation and removal of software applications. They are part of the new, two-button concept implemented in ASHAMPOO 99 DELUXE (see [Quick Two-Button Operation](#) for details).

Troubleshooting and Support

Problems can be caused by damaged or corrupt config and log files.

If something doesn't seem to be working right the first thing to do is reset the selection list by selecting **Reset Selections** in the **File** menu. If this doesn't help then delete (or rename) the following files manually:

LAST.ECS (current selection file)

OLDCFG.ECD

NEWCFG.ECD (configuration files)

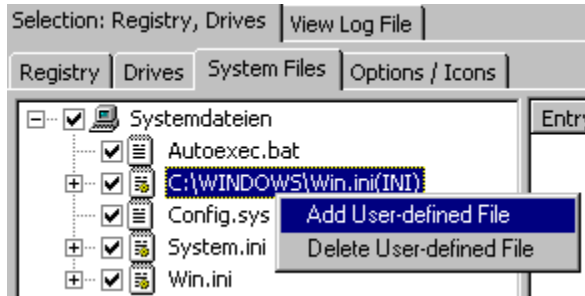
Then restart the program.

If you need more help you can contact us via e-mail at the following address:

support@Hilchner.de

User-defined System Files

ASHAMPOO 99 DELUXE allows you to add user-defined files to the default list in the System Files tab, which normally contains *WIN.INI*, *SYSTEM.INI*, *CONFIG.SYS* and *AUTOEXEC.BAT*.



To add a file right-click in the System Files tab as shown above to display the pop-up menu and select **Add User-defined File**. A dialog is then displayed with which you can add a text file like *autoexec.bat* or an INI file like *win.ini*.

INI files must have the following standard syntax:

```
[Section 1]
Entry1=Value1
Entry2=Value2
...
[Section 2]
Entry1=Value1
Entry2=Value
...
```

ASHAMPOO 99 DELUXE will handle files conforming to this format in the same way as *win.ini*, even allowing you to select and deselect individual entries. The screenshot above shows the file *control.ini* added to the **System Files** list.

What About Applications' Own Deinstallers?

Most modern applications ship with their own uninstall routines. You'd think that when the chips are down, these routines would provide the best removal performance -- after all, the application programmers should know better than anyone else exactly where all the components of their applications are stored.

Unfortunately, this isn't true! In 90% of all cases the uninstall script is generated during installation by the installation program. The problem with this approach is that many settings are not generated by the installation routine but by the application itself. None of these changes can be registered by the uninstall routine, and thus lots of "garbage" gets left on your system when you use it to remove the application.

A program like ASHAMPOO 99 DELUXE that registers all changes, including those made by the application itself, can provide much better removal performance than these automated deinstallers.

This is also why we recommend that you should ***always*** run new applications ***at least once*** before creating the installation log with ASHAMPOO 99 DELUXE! See [Running Applications after Installation](#) for details.

