

Sync Tester Information

Due to the way digital audio is handled on a PC computer, some care needs to be taken to make sure that audio and MIDI playback stay in sync at all times. For background information about this, see the printed Cubasis Audio manual.

One factor in this is the "DMA Blocksize" that the sound card and its software driver uses. The "DMA Blocksize" is the size of the "chunks of audio data" that the computer sends to the audio card.

For proper synchronization between digital audio playback and MIDI, Cubasis Audio needs to know the "DMA blocksize" that your specific system uses. The purpose of the Sync Tester is to extract this information from the sound card and its driver and write it into the CUBASIS.INI file.

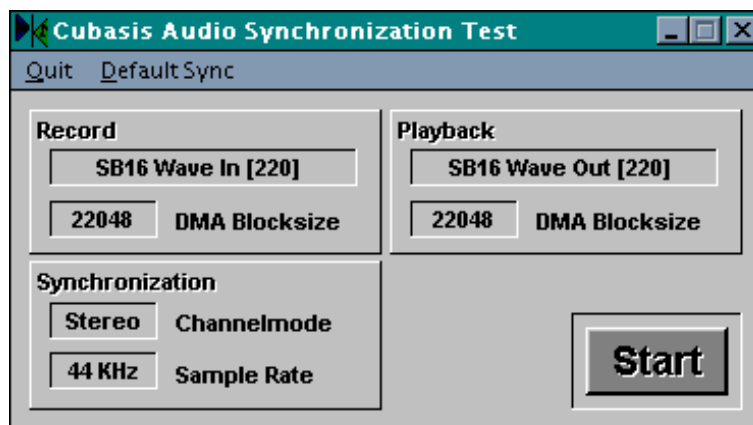
Proceed as follows:

1. Copy the following Files in the same folder as Cubasis Audio (CBASISAD.EXE):

=> testsync.exe, testsync.eng, testsync.deu, tsyncmme.dll <=

2. Launch the Sync Tester, for example by double clicking TESTSYNC.EXE in the File Manager/Explorer.

The following window opens.



3. Select the Audio card(s) you use for Recording and Playback, from the menus.

This is important, since the "DMA blocksize" can differ for recording and playback.

4. Select your main type of recording (mono or stereo) and the sample rate you use.

5. Click the Start button.

The Sync Tester will begin its detection of the "DMA Blocksize", for all combinations of recording playback, mono/stereo and the various sample rates. Depending on the card, the test run will take between 15 seconds and a few minutes.

6. If the test is not able to detect an appropriate "DMA Blocksize", click 'Default Sync' in the menu bar.

7. When the test is finished, the settings are automatically written to the CBASISAD.INI file, and will be used by Cubasis Audio the next time you launch it.

8. Click Quit.

End of document
