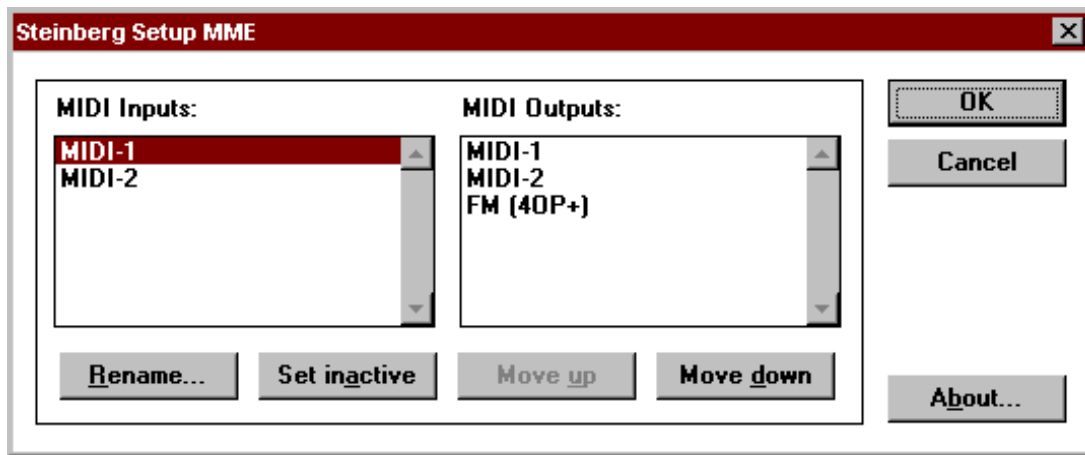


## SetUp MME-Driver

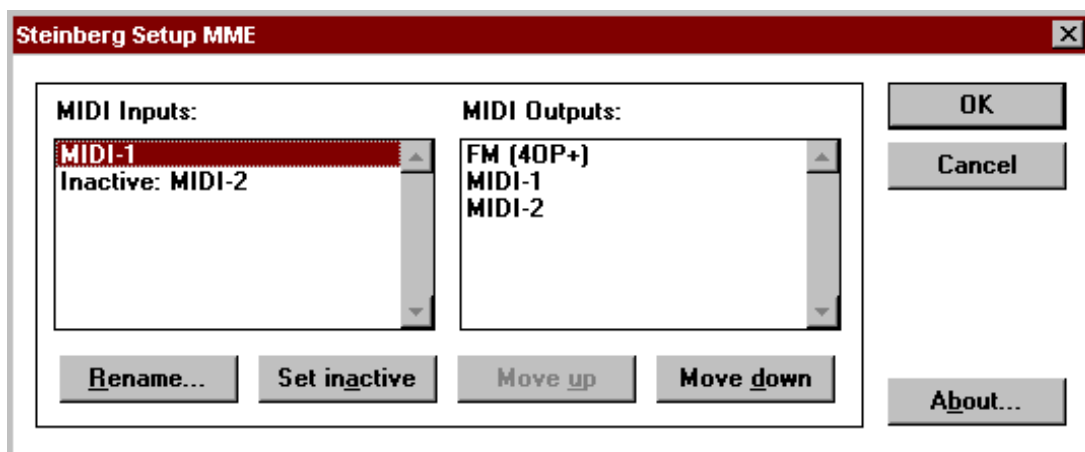
for Cubase / Music Station / Cubasis



Every installed MIDI and sound card device driver appears in this dialog box. You have several options:

1. Every device driver may be renamed. This is not a system wide rename but an alias for the inputs/outputs in Cubase.
2. Drivers may be set inactive.
3. The order of the drivers may be changed via "Move up" and "Move down". This option is especially useful after you added or removed drivers in the control panel's drivers section. Because the order of outputs is NOT saved with a song a change in control panel's drivers section might mess up the output order. By changing the order in this dialog box the desired output order may be reconstructed without loading and saving every song again.

Here's an example:



## **The Steinberg Team**