

Netshop Operating Manual



SOLARSOFT LIMITED NETSHOP

If you have any comments or suggestions about netshop or online help,
please send us an e-mail at comments@solarsoft.uk.com

Solarsoft Ltd, Phillips House, Station Road
Hook, Hampshire, RG27 9HD, UK

SOLARSOFT LTD. ALL RIGHTS RESERVED.

This software is intended for the use by the original purchaser only and for use of building a single website. Lawful users of this software are hereby licensed only to read the software on the enclosed CD from their medium into the memory of a computer solely for the purpose of executing it. Selling or otherwise distributing this software is a violation of the law.

This manual is copyrighted and all rights reserved. This manual may not, in whole or part, be copied, photocopied, reproduced, translated, or reduced to any electronic medium or machine readable form without prior written consent from Solarsoft Ltd. We reserve the right to make changes to this document and/or product without notice.

Solarsoft Ltd warrants that the CD media on which the software is furnished will be free from defects in materials and workmanship, and the software will perform substantially in accordance with the specifications stated in the accompanying written materials. Otherwise, Solarsoft Ltd makes no warranty and representation, either implied or expressed, with respect to the software and the documentation, quality, performance, merchantability, or fitness for a particular purpose. Further, Solarsoft Ltd does not warrant that the software will work properly in all environments and applications. Solarsoft Ltd reserves the right to make changes to the software and User's Guide content without obligation to notify any person or organisation of the revision or change.

CONTENTS

3. Introducing Netshop Lite / What happens when my business grows.
4. System requirements.
5. If you do not have an Internet Account.
6. Installation Instructions.
7. Artificial Intelligence User Setup.
8. Three steps to construct your web site. / Database Editor.
9. Template Builder.
10. Select Colours/Pages.
11. Select Logo.
12. Enter Company information.
13. Build your web site pages.
14. FTP (File Transfer Protocol).
15. Finished Site / Search Engine Registration.
16. Changing the Application Buttons/User Settings.
17. Technical Support / Removal Instructions.
18. Glossary.
21. Solarsoft Netshop Lite Driving Instructions.

INTRODUCING NETSHOP LITE.

Netshop Lite is aimed at the small or start up business with a consumer audience in mind; Netshop Lite gives access to the world of the Internet in minutes to novices and experts.

Some of the key features of Netshop Lite are:

A powerful artificial intelligence engine that will provide the facility for complete automatic site construction if the user requires this support. All information obtained during the search phase will never leave the users computer.

No individual or small business wants to spend thousands purely on site design, Netshop Lite gives a selection of themes and colours to ensure any one can clearly, simply and rapidly present their web site to the waiting browsers. If however a user wishes to personalise their site they can import any text file they wish to make the site their own, therefore achieving a personal touch from a template design.

WHAT HAPPENS WHEN MY BUSINESS GROWS?

As your business grows and you need more than Netshop Lite provides, you can upgrade to suit your needs, to our next product, Netshop.

Netshop is aimed at the business-to-consumer market place.

Netshop has a powerful artificial intelligence engine that will provide the facility for complete automatic site construction if the user requires this support.

Security of information is still one of the concerns of small and large businesses alike when embarking on an E-commerce initiative. Solarsoft has provided comfort in the form of 448-bit encryption, which no other such E-commerce products offer.

No other E-commerce product can provide the ability to maintain free ISP (Internet Service Provider) services with shopping cart functionality due to the need for Active Server Pages. Netshop has the programming necessary to execute a shopping cart within the package. This can represent a significant saving to the small start up operation.

.

For more information about Netshop e-mail us at Netshop@solarsoft.uk.com

SYSTEM REQUIREMENTS

Netshop Lite operates in the Microsoft Windows environment. If you are already familiar with using Windows, then the Netshop Lite look and feel will be familiar to you. If you are not, you will find Netshop Lite fun and easy to learn.

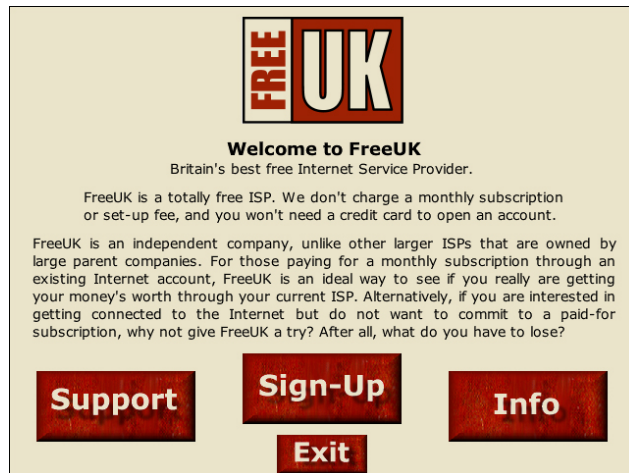
To complete your Netshop Lite installation, make sure you have the following minimum system requirements:

The minimum system requirements for installing Netshop Lite include:

- IBM PC or Compatible
- Microsoft Windows 95, 98, 2000 or NT 4.0
- 486 Processor or higher
- 16MB RAM
- 100MB Hard Drive Space
- A Web Browser
- VGA or higher with 256 Colours
- CD-ROM
- Modem
- Internet Account

IF YOU DO NOT HAVE AN INTERNET ACCOUNT

We have provided a CD (Free UK) with Netshop, which will enable you to obtain a Free Internet account, just insert the CD into your computer and follow the instructions on the screen.



THE INFORMATION NEEDED BEFORE INSTALLING NETSHOP IS:

- * Product ID (from the back of the CD case)
- * Internet Service Provider (e.g. Free UK, Freeserve, Brethenet)
- * Web Site Address (e.g. www.hardware-sales.freeuk.com)
- * Company Name (e.g. Hardware Sales Ltd.)
- * Company Description (e.g. Hardware supplies for home users and businesses.)
- * Keywords (e.g. hardware, computer, monitor, keyboard, mouse, etc.)
- * Sales E-Mail Address (e.g. sales@hardware-sales.freeuk.com)
- * Web Site FTP Address (e.g. home.freeuk.com)
- * Web Site Username (e.g. hardware-sales)
- * Web Site Password (e.g. Password given to you by your Internet Service Provider)

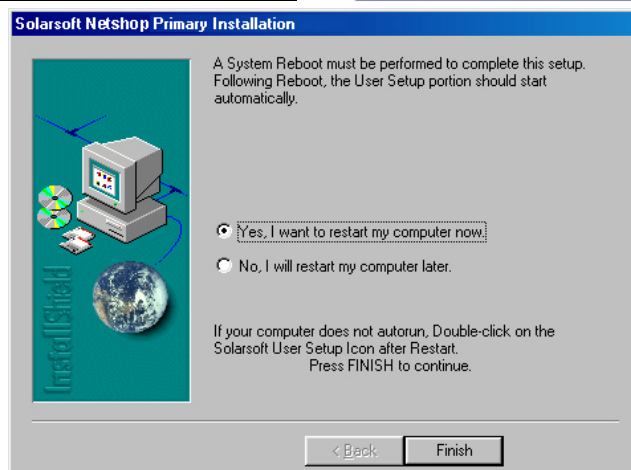
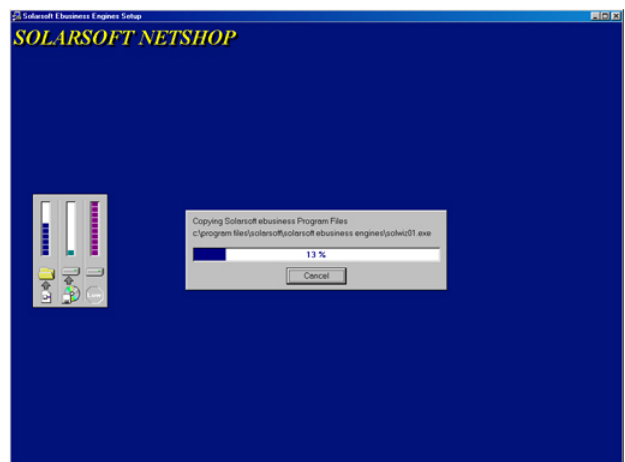
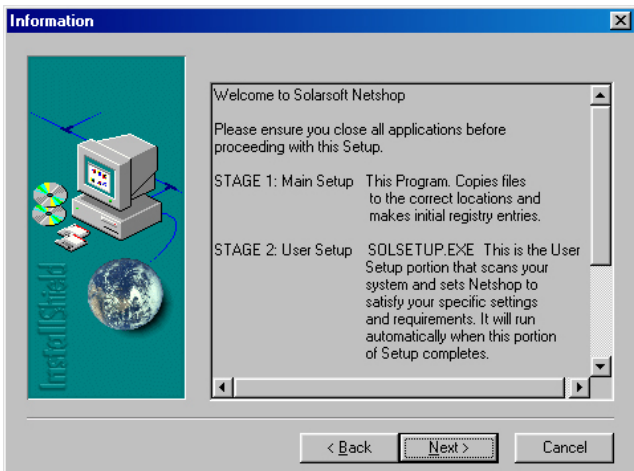
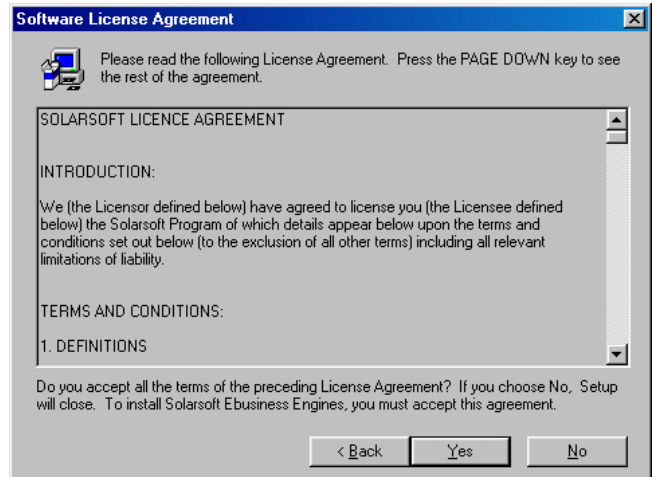
INSTALLATION INSTRUCTIONS

Installing Netshop Lite is quick and easy.

If this is the first time you are installing Netshop, use the instructions below to get started.

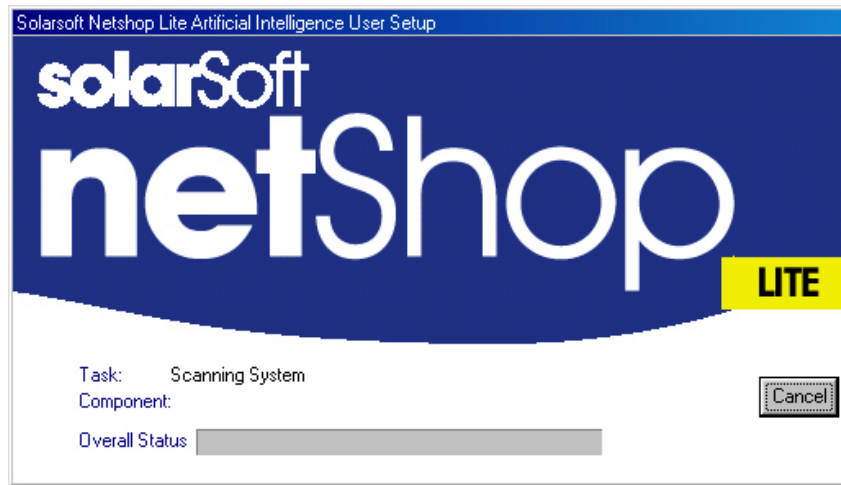
To install Netshop:

1. Close all open programs except Windows.
2. Insert the Netshop CD into your CD-ROM drive.
3. If the set up program does not automatically start, click the **My Computer** icon on your Windows desktop. Double-click the drive letter of your CD-ROM drive, then double-click the **Setup.exe** file. The welcome dialog box displays
4. Follow the screen prompts to install Netshop.

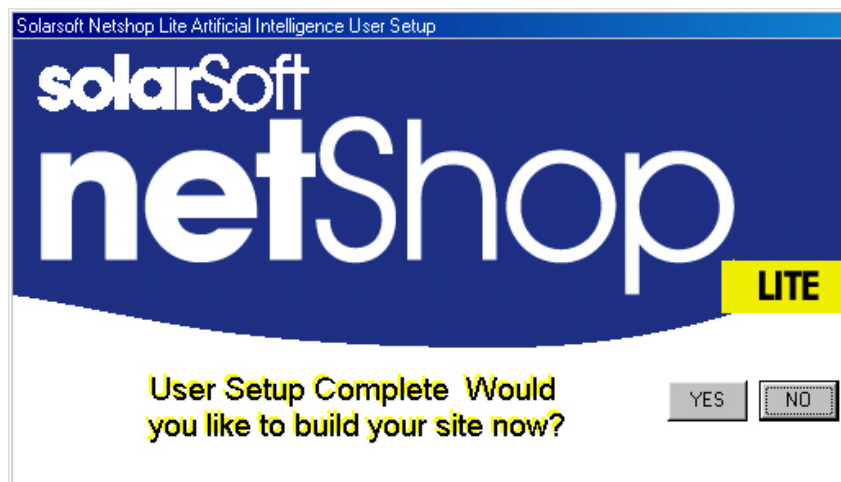


Artificial Intelligence User Set-up

After reboot, the second part of the installation begins. Please fill in the details from above when requested.



During the installation process, Netshop scans the hard drives of the installation machine to determine which products are installed. It then assigns these programs to the interface options within Netshop. This is so all regularly used programs can be accessed directly from within Netshop.



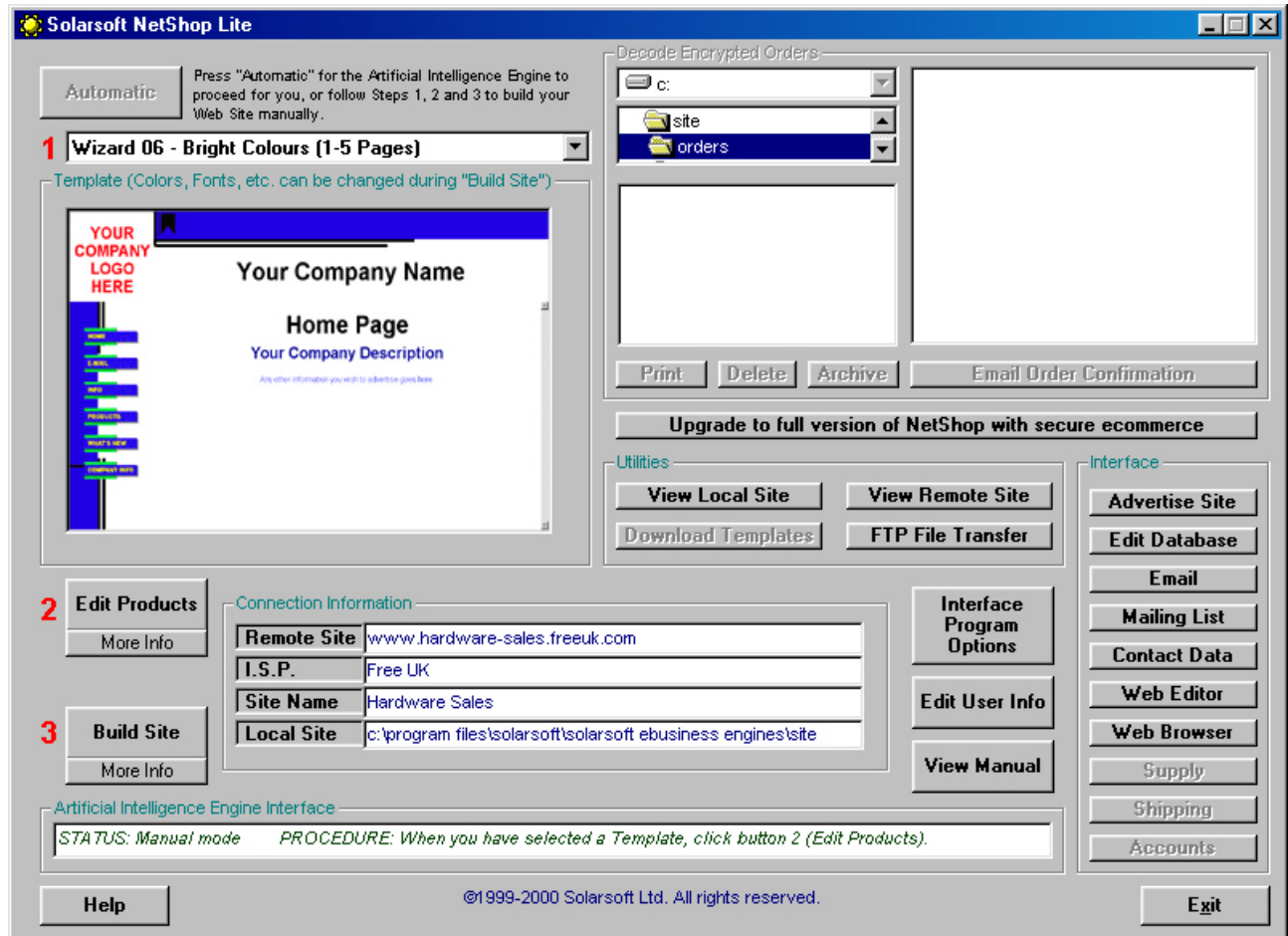
When you are ready to build your web site click on the *YES* button

THREE STEPS TO CONSTRUCT YOUR WEB SITE.

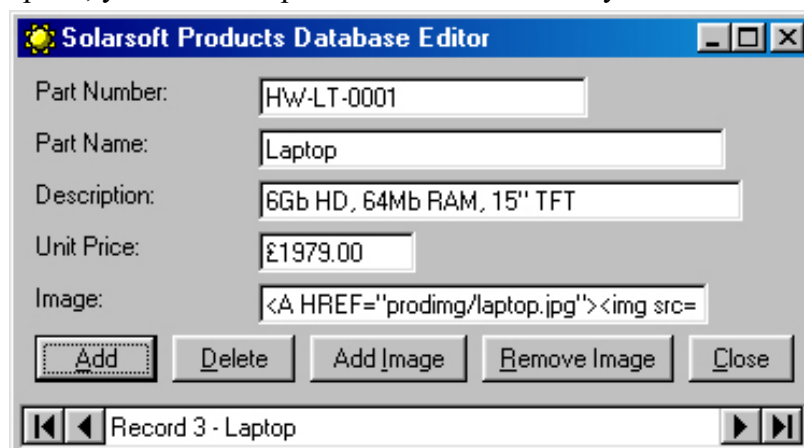
Automatic Automatically displays all 100 templates in turn, to select a template, press the spacebar. After this the database editor will automatically start. When this is closed, the build site control will open.

1. Select template: Select 1 of 100 templates.
2. Edit products: This will open your database editor.
3. Build site: This will open the Template builder.

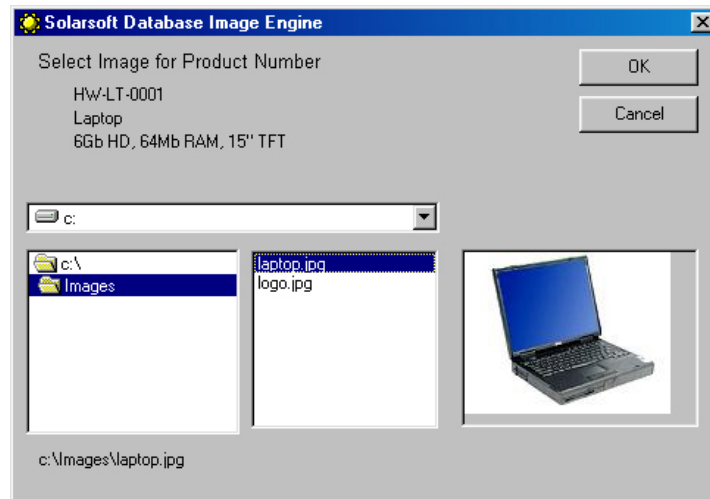
Also on the control panel are Interface Buttons, these enable you to use the programs already resident on your computer. (E.g. MS Word, Access, Front-page, Paintshop Pro,)



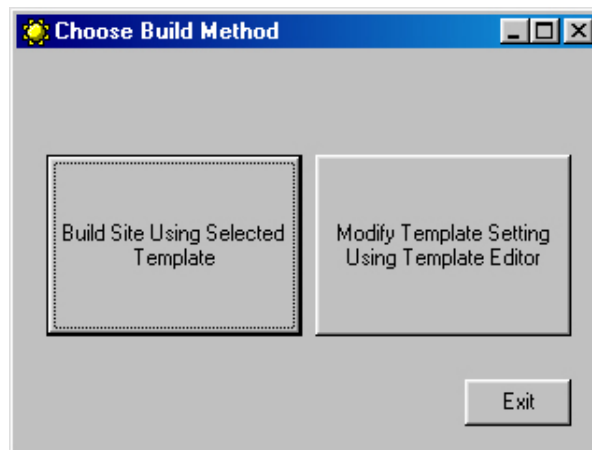
After selecting a template, you can enter product information into your Database.



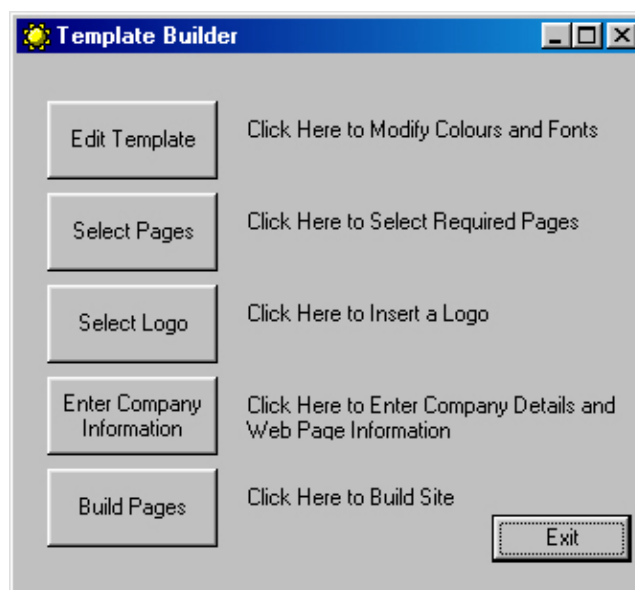
If you wish to enter images to your Database, select the *Add Image* button.



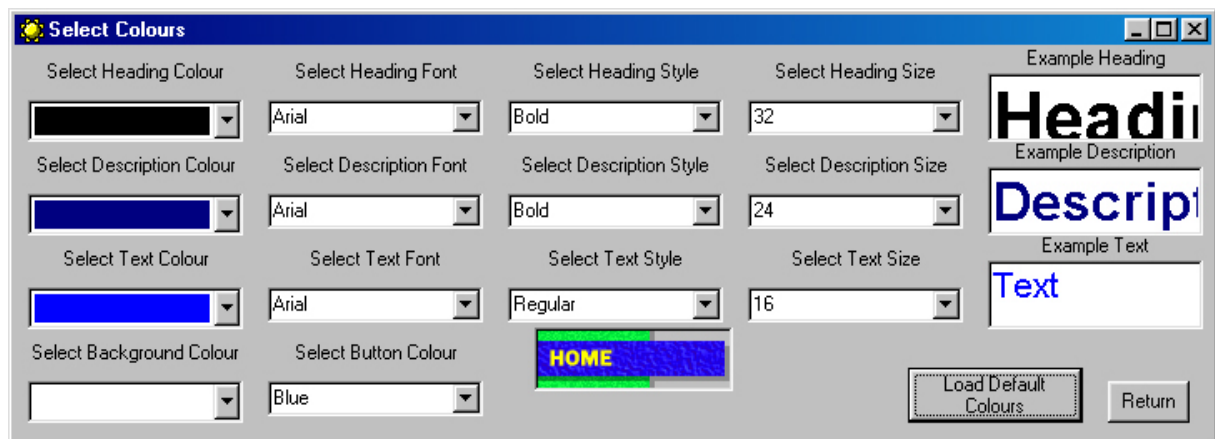
When you have finished editing your Database select the *Close* button, which will lead you to the *Choose Build Method* screen.



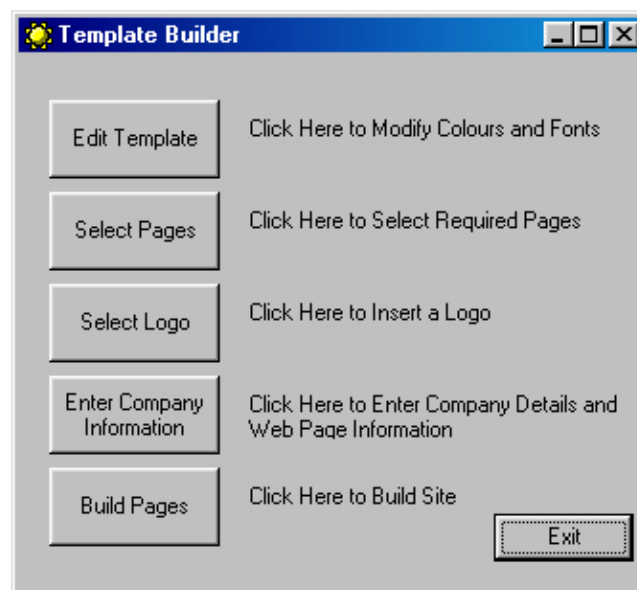
If you choose the *Build Site* option, the default colours will be used. If you choose the *Modify Template* option, you are able to change the colours and fonts in the Template you have selected.



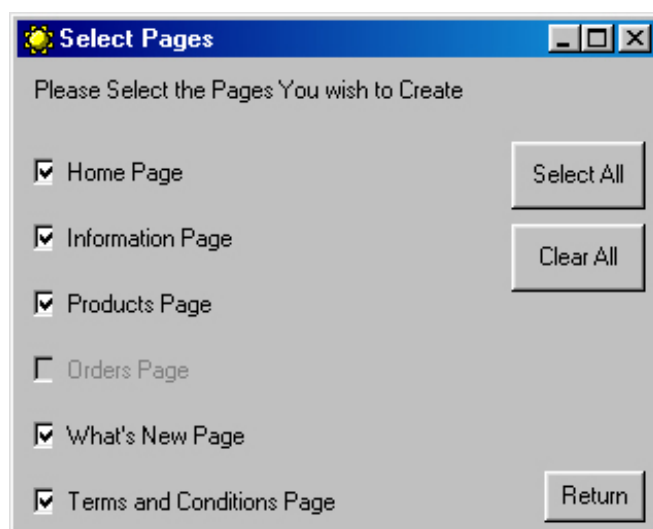
When you click on the *Edit Template* button, the select colours screen will be displayed.



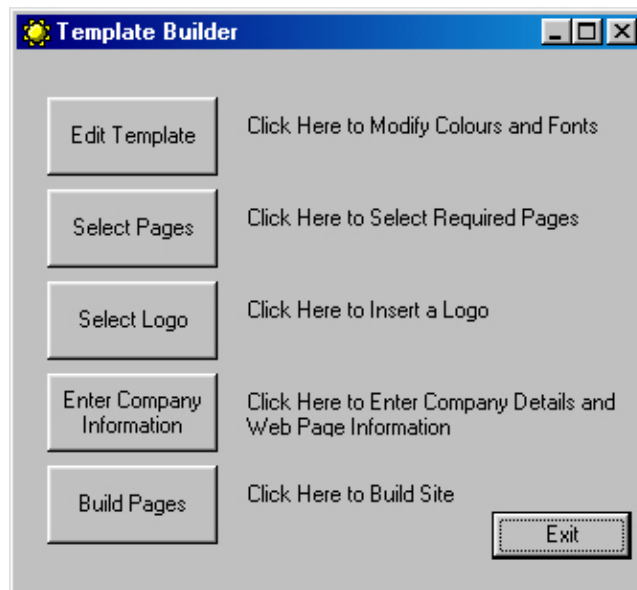
When you are happy with your colour and font selection, press return



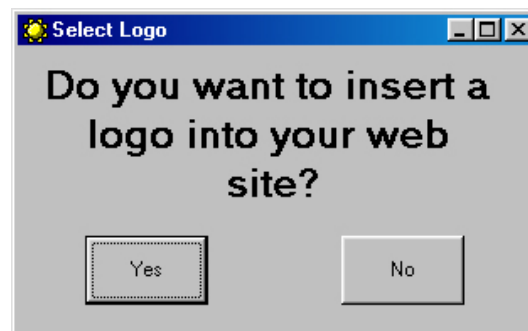
When you click the *Select Pages* button, the select pages screen will be displayed.



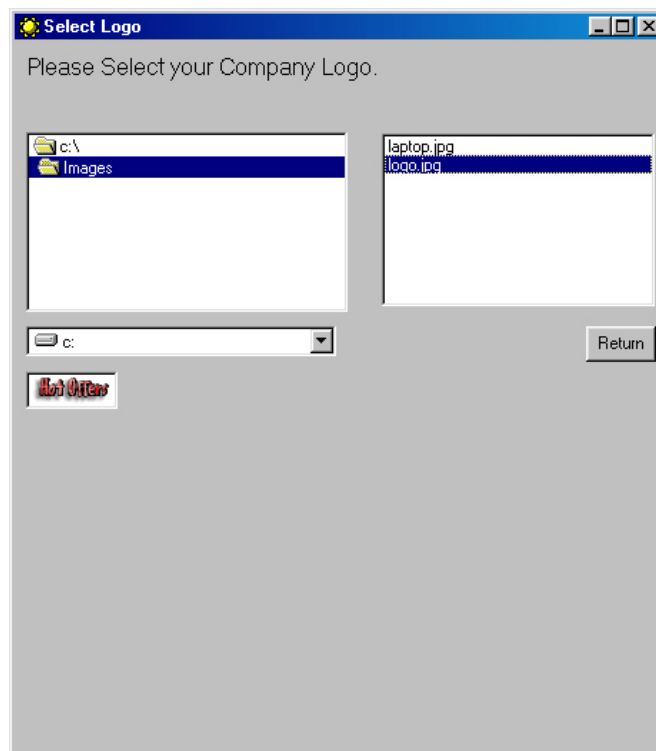
You are now able to select the pages for your web site. When finished press return.



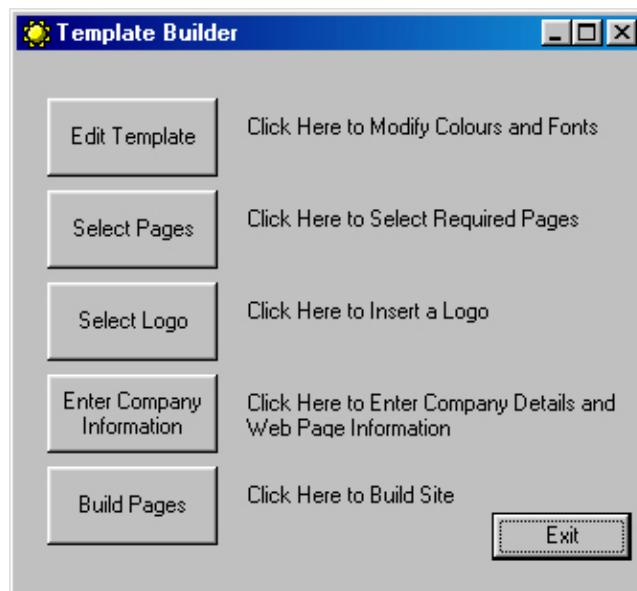
If you wish to include a logo in your web site, choose the *Select Logo* button.



This display gives you the option to insert a logo or not.



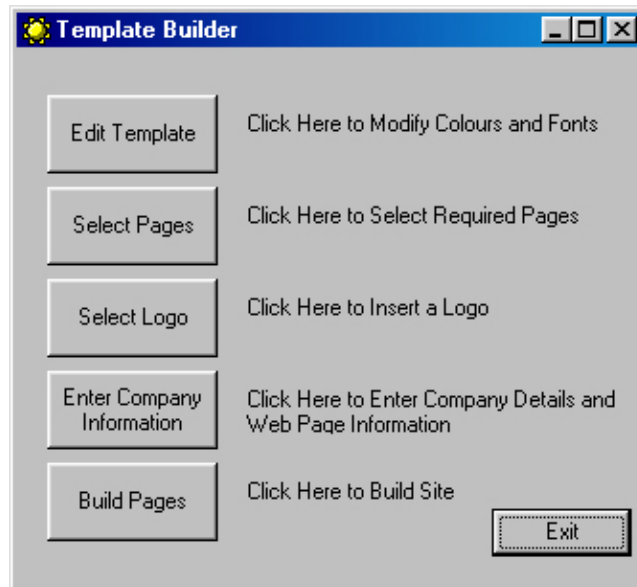
When you have selected your logo, press return.



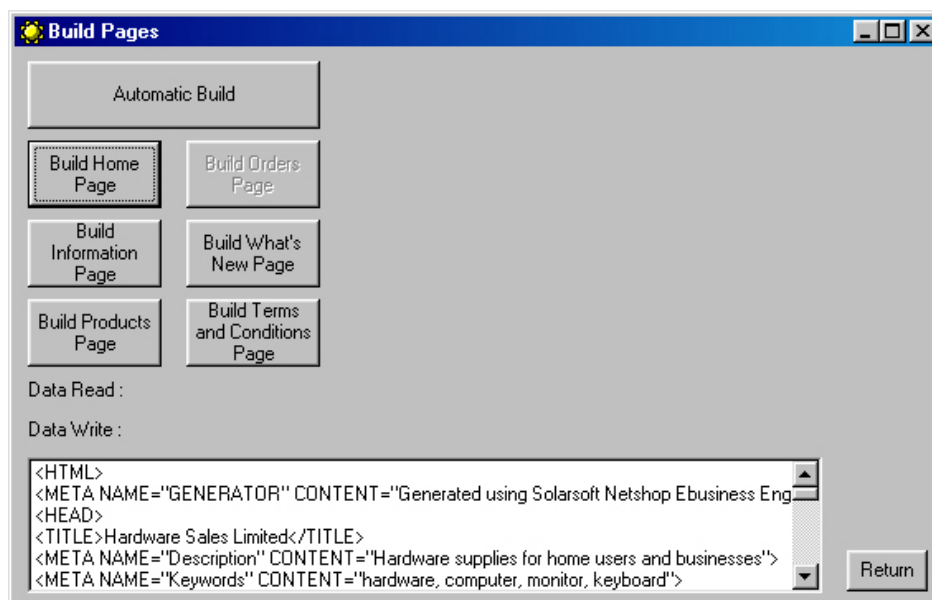
To insert your company information, click on the *Enter Company Information* button.

To enter information and details that will be displayed on your web site, click on the corresponding button.

When you have finished, click on return.

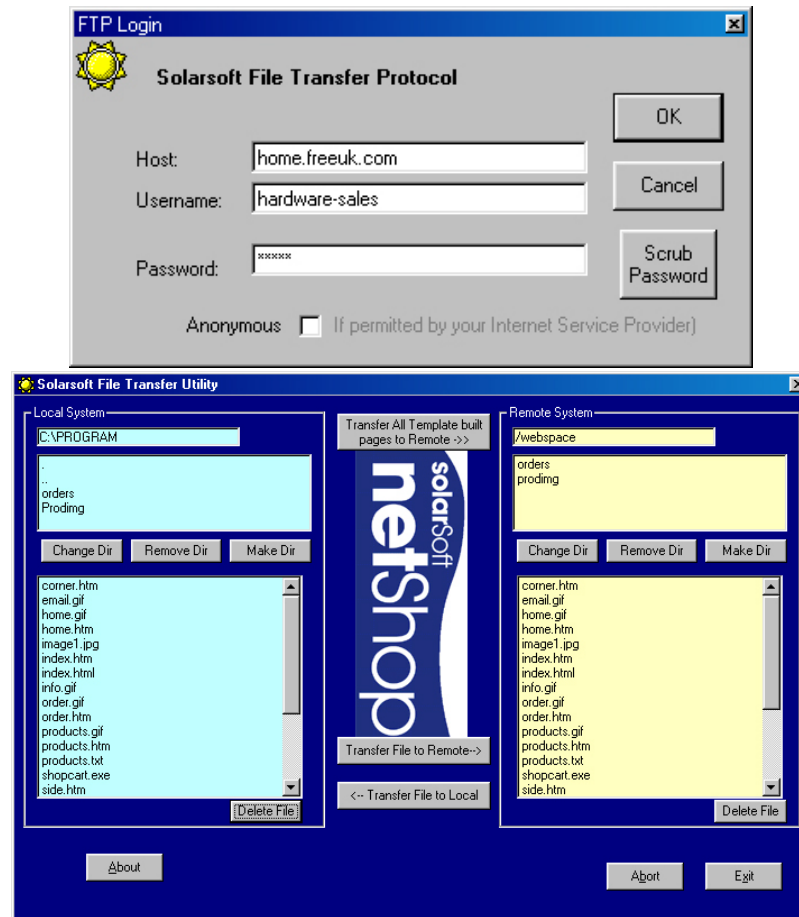


When you are ready to construct your web pages select the *Build Pages* button.



Click the '*Automatic Build*' button for assisted set-up or build each page separately by clicking on each page button.

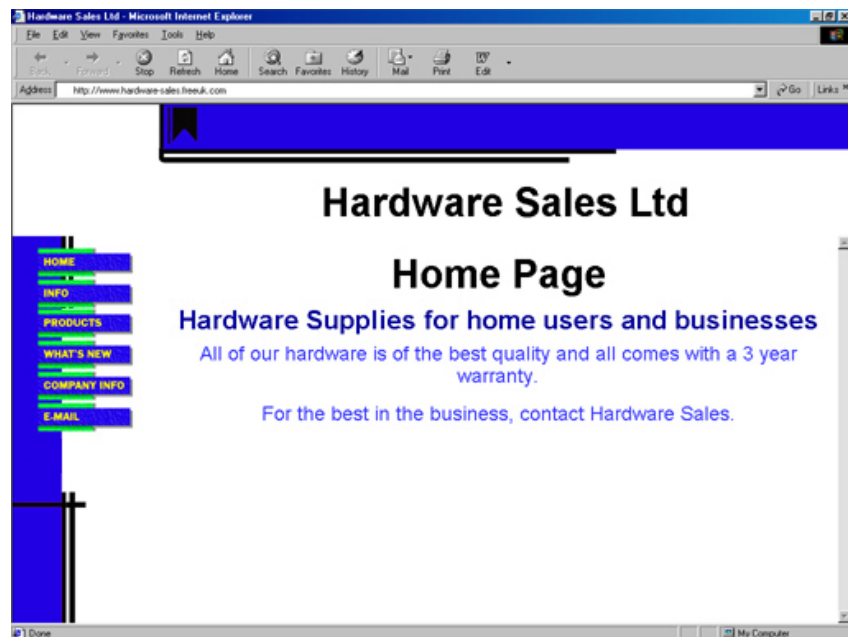
When all pages are created, the FTP (File Transfer Protocol) program will start.



Netshop will connect to your server and you can upload all files to your web site when you press the *Transfer All Template built pages to Remote-->>* button.

Your web site is now complete and ready for use.

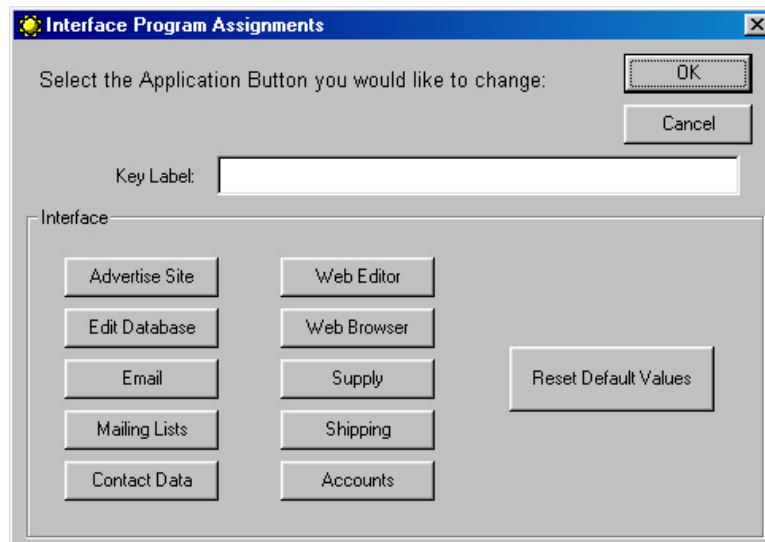
Your finished web site.



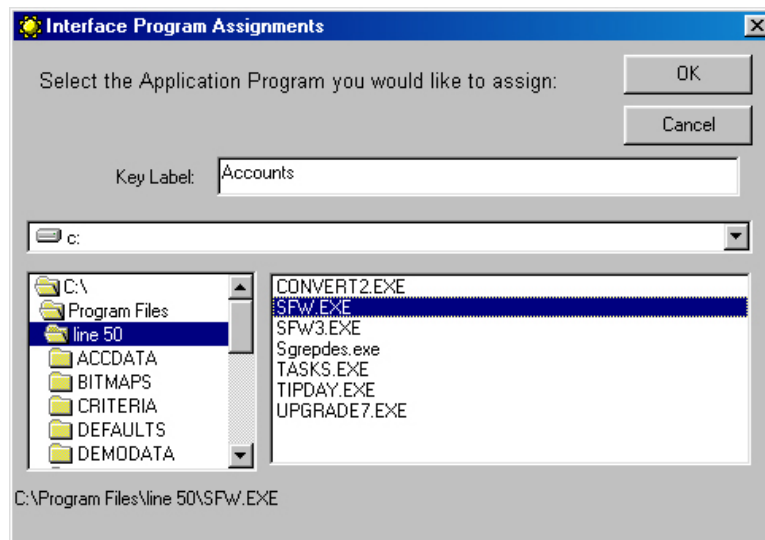
Advertise your site - automatically register your site with search engines.

A screenshot of a web browser window titled "Solarsoft Eclipse Search Engine Registration - Microsoft Internet Explorer". The address bar shows "http://www.solarsoft.uk.com/search.htm". The page has a blue header bar with the text "Search Engine Registration" in red. Below the header, it says "To register your site with Internet Search Engines, complete this form and press the submit button." in blue. The form is a table with various fields for registration information. The fields are: Name (A.N.Other), Company (Hardware Sales Ltd), Title (Hardware Sales Ltd), URL (http://www.hardware-sales.freeuk.com), Your email (admin@hardware-sale), Description (Hardware supplies for ho), Keywords (hardware, computer, mon (seperate with comma)), Phone # (01234 567890), Address (Some Road), City (Some City), Region (Some County), Country (Some Land), Infomarket Category (Computers), Jayde Category (Computers), Link Category (Computers), Default FFA Category (Computers), and Select Search Engine data to use (Top 10 US/International, Top 10 UK/European). The status bar at the bottom shows "Done" and "Local intranet".

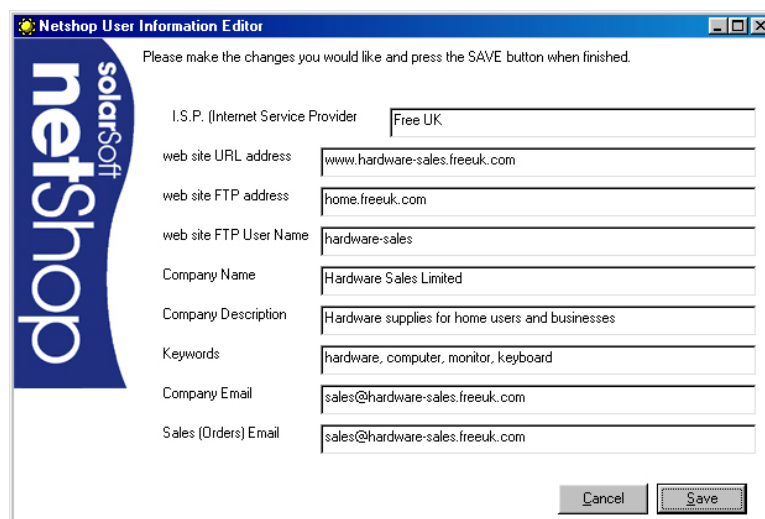
If you need to change the assignment of the Interface Buttons, click on the Interface Program Options on the control panel.



When you are happy with the Key Label and program selection, press the *OK* button.



If you need to change the User setting, click on the Edit User Info Button.



Technical Support

Technical questions can be submitted via e-mail.

support@solarsoft.uk.com

We hope you have fun using Netshop. For more detailed instructions, see online help. If you want to learn more about other products from Solarsoft Ltd, visit us at our web site:

www.solarsoft.uk.com

Removal Instructions

To remove the program, first go to add/remove programs (which is in Control Panel) and remove “Solarsoft Ebusiness Engines”

Next remove the following directories:

C:\Soltemp

C:\Program Files\Solarsoft

Please note; your web-site is stored in c:\program files\solarsoft\solarsoft ebusiness engines**site**

Some files are created in your c:\ directory, if these exist, please delete.

ai.dat

makecab.exe

products.txt

shopcart.exe

shopping.dat

solarsoft.mdb

solsetup.ini

Glossary

Authentication

The process of determining the identity of a user who is attempting to access a system.

Certificates

A digital ID issued by a Certifying Authority (CA) to authenticate and validate Internet data transfer.

Certifying Authority

An organisation which issues digital certificates proving the identity of the sender of an e-mail message or file.

Client

A computer requesting a service from another computer called the server. For example, if you are connecting to an ISP or company network computer, your computer is the client and the ISP or company network computer is the server.

Cookie

A small piece of information which a web server can store through your web browser onto your hard drive disk, and later read back from your browser.

Web sites collect this information from you based on a utility referred to as a Cookie. Cookie programs can collect information on where you have been on the Net. They are built-in automatically to both Netscape Navigator and Microsoft's Internet Explorer, but may be disabled. The information they collect is stored on your hard drive. Whenever you visit a site more than once, that site accesses your cookie file to see what you viewed before in order to know more about what you are interested in.

Cracker

Someone who removes or bypasses copy protection on software, generally by modifying the software.

Decoding

Unprotect an e-mail message and its supporting documents.

Digital Certificates

Documents issued by Certifying Authorities proving the authenticity of a web document or URL. A digital certificate is a password-protected, encrypted data file that contains message encryption and user-identification in addition to the message being sent. Though any computer on the Internet could still access the file in transit, only the intended receiver may decrypt and read the message.

Digital Signature

A security technique for uniquely identifying the source of a document or an application.

Encoding

Protect an e-mail message and any of its sensitive documents.

Encryption

A security technique to prevent access to information by converting it to cyphertext (scrambled, unreadable text). The cyphertext must then be decoded by the Internet user before it can be read.

Encryption can be used to secure everything from sensitive computer files to the transmission of financial data across the Internet to calls made on digital cellular telephones.

Extranet

Extranets are networks that connect enterprise intranets to the global Internet.

Extranets are designed to be used by enterprise vendors and other trusted trading partners to expedite the exchange of products, services and other information key to the operation of the business.

File Transfer Protocol (FTP)

FTP is a program used to transfer files between computers either through the Internet or between PCs on a network.

Firewall

A security process which programs one computer system to control the flow of information between the Internet and other Intranet computers. The computer system barrier prevents outsiders from accessing an enterprise's internal network: the internal network, then, accesses the Internet indirectly through the firewall system. *See Proxy Server.*

Graphics Interchange Format (GIF)

A graphics image file format commonly used in HTML documents.

Hacker

A user who penetrates computers without authority.

Hyperlink

A word or phrase underlined or otherwise accentuated to classify its ability to link to another document when clicked with a mouse.

Hyper Text Mark-up Language (HTML)

The authoring language used to develop web pages and e-mail messages.

Hyper Text Transfer Protocol (HTTP)

The protocol used for transporting HTML documents on the Internet.

HTTPS

Indicates a secure Internet server. It is the secure protocol used for transporting HTML documents on the Internet.

Internet

The world's largest computer network, connecting many campus, state, regional, national and enterprise computer networks.

Intranet

An internal Internet encased behind an enterprise's firewall.

Internet Service Provider (ISP)

A company which provides access to the Internet for dial-up users and/or corporate networks. It rents access to customers on a type of service basis.

Message Authentication

The process of validating the sender and recipient of an e-mail message.

Multipurpose Internet Mail Extensions

Internet mail in which multimedia can be attached, including sound, graphics and video. See also *S/MIME*.

Post Office Protocol (POP3)

An e-mail protocol for retrieving mail from a provider's machine.

Point-TO-Point Protocol (PPP)

A communications protocol used to send and receive information (data packets) over the Internet through a telephone line connection to a modem.

Proxy (server)

A server that acts as a firewall (barrier), mediating traffic between a protected network and the Internet.

Search Engine

Programs which automatically search the Internet for user-specified information.

Secure Channel

A web site, which guarantees the secure transmission of any information, sent to it.

Secure Electronic Transactions (SET)

Secure Internet protocols for processing electronic money.

Secure Multipart Internet Mail Encoding (S/MIME)

The protocol used to send secure e-mail messages.

Secure Socket Layer (SSL)

Netscape's internal program security technology designed to clearly identify the sender and recipient of Internet transmitted information.

Security

Methods to protect computers resources, including data, hardware, telecommunications lines and software applications from unauthorised access.

Server

A computer which provides information or connections with other computers on a network. *See Client.*

Single Line Internet Protocol (SLIP)

An older communications protocol for dial-up serial Internet connections.

Simple Mail Transport Protocol (SMTP)

An Internet protocol for sending e-mail.

S/MIME

See Multipurpose Internet Mail Extensions (MIME).

Template

A pre-structured/designed web page. Templates are used to give web pages a similar look and feel (e.g., consistent text fonts, page design and colours).

Transmission Control Protocol/Internet Protocol (TCP/IP)

The set of standards (Protocol) for data transmission and error correction that allows the transfer of data from one Internet-linked computer to another.

The World Wide Web

(a.k.a., WWW, W3, The Web) A distributed Internet hypertext information system based on the HTTP protocol and the HTML language and created by researchers at the European Laboratory for Particle Physics (CERN) in Switzerland.

Uniform Resource Locator (URL)

The site address used to specify the location of a web page (HTML document). This is the formal, technical name of a text string that supplies an Internet address, and the method by which it can be accessed.

SOLARSOFT NETSHOP LITE DRIVING INSTRUCTIONS

