

Sunplan Ltd.

DB Delete For Windows® CE Version 0.1α

Sunplan Ltd.
19, Woodlea Close,
Bromborough,
Wirral,
Merseyside,
L62 6DL.
United Kingdom.

Telephone +44 151 328 1043
Facsimile +44 151 328 1044
Email sunplan@guru-c.demon.co.uk
<http://www.guru-c.demon.co.uk/sunplan/>

INTRODUCTION

CAUTION!

PRE RELEASE INFORMATION

INSTALLATION

IF YOUR MACHINE HAS MFCWCE.DLL IN ROM (EG. HP320LX)

IF YOUR MACHINE DOES NOT HAVE MFCWCE.DLL IN ROM (EG. CASSIOPEIA)

RUNNING DB DELETE

UNINSTALLATION

DISCLAIMER

Introduction

DB Delete was written to address the problem of applications uninstalling themselves and leaving behind databases in the Windows® CE object store, and as a way to delete unwanted databases in the object store. Databases cannot be deleted with either the PC based HPC explorer, or the explorer on the CE device itself.

CAUTION!

DB Delete can remove databases such as your contacts database, your appointments database and your tasks database. This means that you could permanently delete information that may be important to you. Once you have confirmed the deletion, you cannot recover this data. *IT IS NOT TRANSFERED TO THE RECYCLE BIN - THERE IS NO UNDO FACILITY.* It is therefore advised that you backup your HPC with either your PC based HPC Explorer, or to a storage device, such as a Compact Flash card, before using DB Delete for Windows® CE.

Pre Release Information

As this is a pre release version, it is strongly advised that you **back your HPC up before running DB Delete for Windows® CE**. Sunplan Ltd. take no responsibility for any data lost due to the use of this program.

Installation

To install DB Delete For Windows® CE on your HPC follow the following steps.

If your machine has MFCWCE.DLL In ROM (EG. HP320LX)

1. Connect your HPC to your PC and run HPC explorer on the PC.
2. From Windows Explorer on the PC, highlight the file DBDelete.exe and select Copy.
3. Browse to the location you require DBDelete to be installed, using the HPC explorer (for example \Program Files\Accessories).
4. Select Paste from the edit menu of HPC Explorer.
5. DB Delete can now be run by double tapping on its icon. If a desktop shortcut is required, highlight DBDelete, and select Copy. Alt tap on your desktop, and select Paste Shortcut.

If your machine does not have MFCWCE.DLL In Rom (EG. Cassiopeia)

1. Connect your HPC to your PC and run HPC explorer on the PC.
2. From Windows Explorer on the PC, highlight the file mfcwce.dll and select Copy.
3. Browse to \Windows using the HPC Explorer.
4. Select Paste from the edit menu of HPC Explorer.
5. From Windows Explorer on the PC, highlight the file DBDelete.exe and select Copy.
6. Browse to the location you require DBDelete to be installed, using the HPC explorer (for example \Program Files\Accessories).
7. Select Paste from the edit menu of HPC explorer.
8. DB Delete can now be run by double tapping on its icon. If a desktop shortcut is required, highlight DBDelete, and select Copy. Alt tap on your desktop, and select Paste Shortcut.

Running DB Delete

Once DB Delete has been installed, double tap its icon to start it running. DB Delete may take a few seconds to start up if there are many databases in the object store. Once DB Delete has initialised, a dialog will appear.

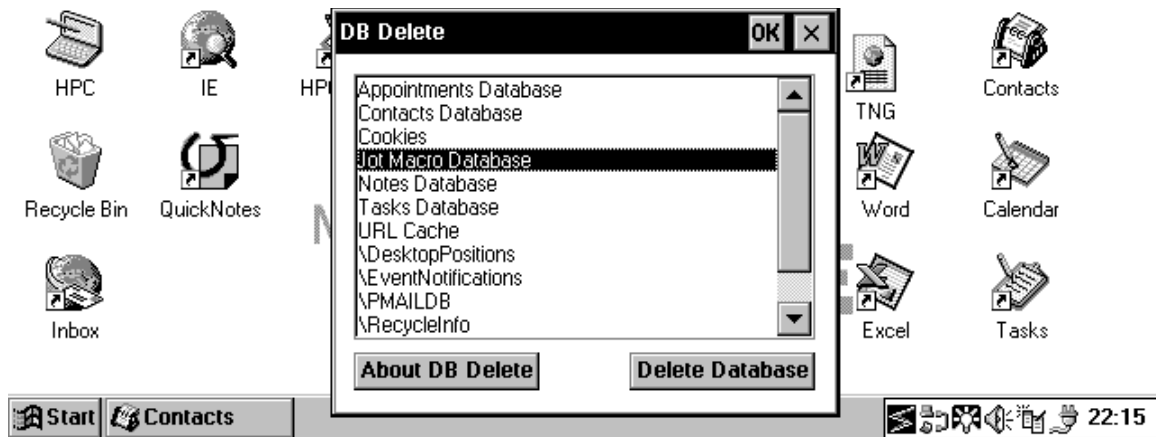


Figure 1 - The Main DB Delete Dialog

DB Delete shows all the databases in the Windows® CE object store, and allows you to select any database to be deleted. If the Delete Database button is pressed without a database selected, a warning dialog will appear.

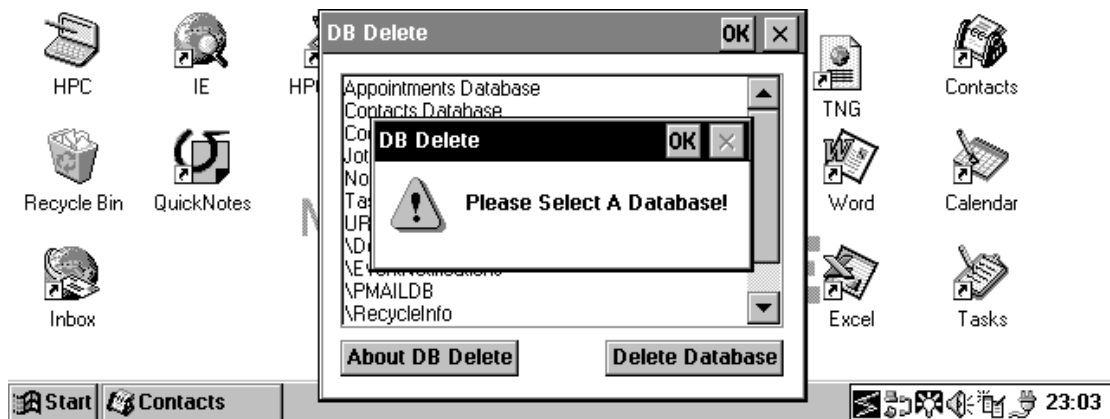


Figure 2 - The No Database Selected Warning

When a database is selected, and the Delete Database button is pressed, a warning dialog is displayed to confirm if you really want to delete this database. ***Remember that there is no undo facility, databases are not transferred to the recycle bin, and you can very easily delete data that may be of vital importance to you. It is recommended that before using DB Delete you perform a full backup of your HPC, either using the PC based HPC explorer, or to a storage card, such as a compact flash device. Sunplan is not responsible for any data lost due to the use of DB Delete for Windows® CE.***

DB Delete
Version 0.1 α

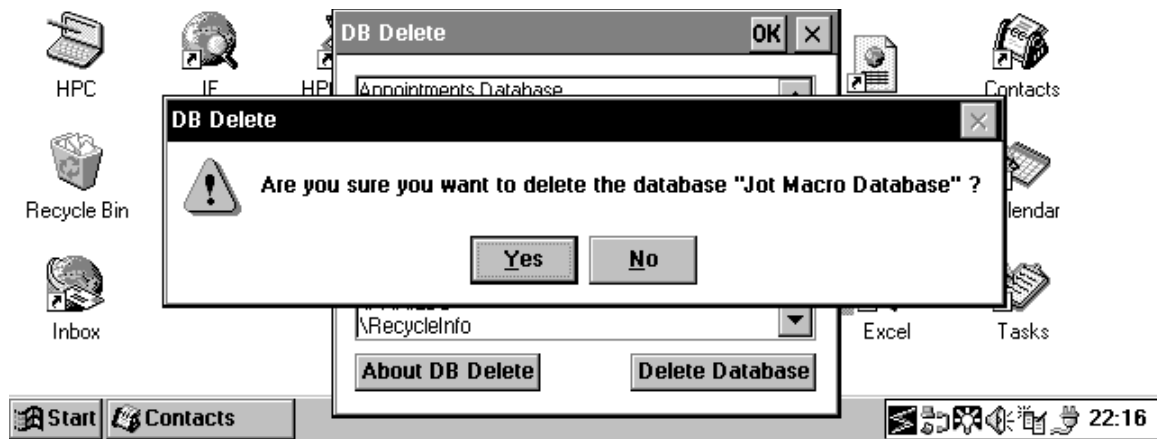


Figure 3 - The No Database Selected Warning

UnInstallation

To remove DB Delete from you system, simply delete the DBDelete.exe file from your HPC. If you installed MFCWCE.DLL, and are sure no other aplications are using it, then you can delete this from your windows directory on your HPC.

Disclaimer

DB Delete is used at your own risk. Sunplan Ltd. accepts no responsibility for any losses sustained due to the use of DB Delete.