

FlashPack™ Version 2.02

By TRG Products, Inc.

Copyright 1999, TRG Products, Inc.

1. Introduction

FlashPack™ Version 2.02 is an add-on application to TRG's FlashPro™ product that allows you to schedule automatic back-ups to flash memory of any database contained in your Palm Organizer. In the event of a hard reset, battery emergency, or any other disaster that would otherwise leave you with an empty Palm Organizer, FlashPack will help ensure that the data you need is preserved. Back-ups may be scheduled either daily or weekly, and any or all of the databases will be backed up.

2. Installation

FlashPack can be installed using the Palm Install Tool or equivalent software. Copy the FlashPack.prc file to the \Palm\Add-on\ folder, perform an Install using the Palm Desktop Install function, and perform a HotSync.

You must have TRG's FlashPro installed for FlashPack to function correctly. FlashPack Version 1.05 or later is required for FlashPack V2.02. For more information on FlashPro, visit TRG's web site (<http://www.superpilot.com>).

Due to the new capabilities introduced in FlashPack version 2.02, previous versions of FlashPack are not compatible and must be removed before this version may be used. (FlashPack will warn you if this is the case, and refuse to run.) Please see the README file for details.

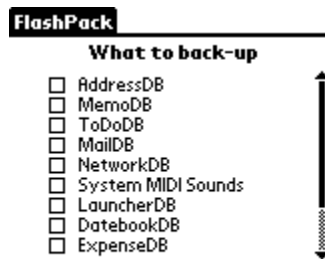
3. How to use FlashPack

To use FlashPack, first select which databases you wish to have backed-up to Flash memory. You can back them up immediately by selecting the "Backup Now" item from the menu. Or you can schedule automatic backups by choosing "Tools", and then "Schedule".

FlashPack creates a backup of itself in Flash memory called FlashRestore. Aside from the difference in names, there is no difference between the two programs; however, only programs residing in RAM can write to flash memory. For this reason, FlashPack presents a different screen when it is executed from flash memory.

If a "Hard Reset" occurs, you will hear an alarm beep while the PalmOS initial screen is being displayed. This lets you know that FlashRestore has survived the reset. You should now run FlashRestore and let it recover the databases that have been backed up. The most recent copies of all backed up databases are restored.

Back-up screen (the initial FlashPack screen)



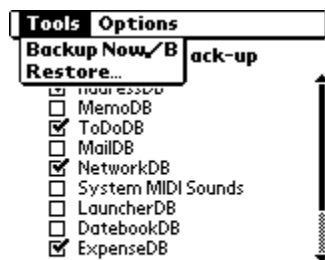
This is the initial screen that you see when starting FlashPack.

The list contains every non-resource database in RAM in your Palm Organizer. A check mark indicates the databases that will be backed-up. Initially only the "FlashPack DB" database is checked. Due to the importance of the FlashPack database during restores, you are not allowed to uncheck it.

Back-up screen menus

These are the menu items available from this screen.

"Tools" Menu Screen



"Backup Now" Screen



Back up the selected databases immediately.

"Restore" Menu Screen

FlashRestore

What to restore

- ☐ FlashPackDB
- ☒ ExpenseDB
- ☒ NetworkDB
- ☒ AddressDB
- ☒ ToDoDB

Switches to the database restore screen as shown above.

"Options" Menu Screen

Tools Options

Schedule ✓W
Preferences ✓R
About FlashPack ✓A

- ☒ MemoDB
- ☒ ToDoDB
- ☐ MailDB
- ☒ NetworkDB
- ☐ System MIDI Sounds
- ☐ LauncherDB
- ☐ DatebookDB
- ☒ ExpenseDB

"Schedule" Sub-Menu Screen

FlashPack

What to back-up

- ☐ MemoDB
- ☐ MailDB
- ☐ System MIDI Sounds

Schedule ⓘ

When to back up

3 : 3 3 AM PM

Never S M T W T F S Daily

OK

Lets you schedule periodic unattended backups.

Tapping the "information" button shows the following screens:

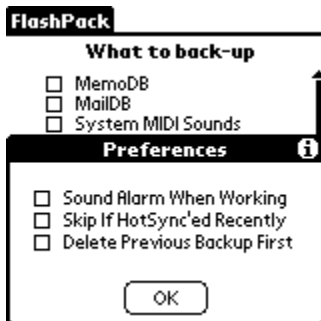
Tips

To schedule periodic automatic back-ups, click on the buttons at the bottom of the screen. Choosing "Never" will prevent back-ups from being performed, while choosing "Daily" will schedule a back-up every day at the indicated time. The remaining buttons let you

Done



"Preferences" Sub-Menu Screen



Controls various options during back-up operations.

"About FlashPack" Screen



Tells you about the application. Tapping the "More..." button will display additional information about how to use FlashPack, as shown below.



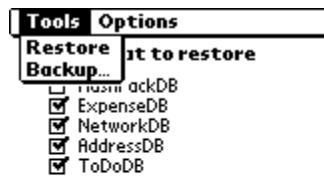
Restore screen



This is the screen that you see when restoring databases. In the upper section of the screen, you will see a list titled "What to restore". The list contains every database that is checked in the Back-Up screen. A check mark indicates the databases that will be restored. The "FlashPack DB" database can not be checked, because it is used during the restoration procedure.

Restore screen menus

“Tools”



"Restore"



Selecting "Restore..." from the Back-up screen takes you to this screen.

“What To Restore” Screen



Restore the selected databases immediately.

Progress screen

Whenever data is moved between RAM and flash, a progress screen is displayed. The upper section describes what is being done, while the lower section shows a tracking bar.

FlashRestore screen

This is the only screen available when running a copy of FlashPack that is located in flash memory. In the upper section of the screen, you will see a list titled "What to restore". The list contains every database that has a back-up copy in flash memory. A check mark indicates the databases that will be restored. The "FlashPack DB" database can not be unchecked, because it must be restored to RAM simultaneously with FlashPack itself.

FlashRestore Menus

FlashRestore has the following menus.

"Tools"

"Restore All"

Restore all backed up databases, whether checked or not.

"Restore Selected"

Restore only the checked databases.

9. Compatibility

FlashPack should be compatible with all Palm Organizers that support TRG's FlashPro. This includes the following:

- a. All Palm Organizers with Palm OS 3.0, 3.1, and 3.3
- b. All IBM WorkPad organizers with Palm OS 3.0, 3.1, and 3.3
- c. The Symbol SPT 1500 (possibly, see note)

FlashPack V2.02 requires FlashPro V1.05 or later. When running on Palm OS 3.3, FlashPack requires FlashPro 1.06.

NOTE: FlashPro (and therefore FlashPack) is not compatible with the Palm VII or Palm IIIe Organizers from Palm Computing.

NOTE: FlashPro (and therefore FlashPack) is not compatible with the Synapse™ Pager Card from PageMart.

NOTE: FlashPro works on the Symbol as long as you never run the Symbol flash utility. This utility may prevent the device from booting and require the OS to be re-flashed. Even if it appears to work, there may be other side effects of using the programs together.

10. Licensing and Redistribution

FlashPack version 2.02 is the property of TRG Products, Inc. Redistribution or unlicensed use is prohibited. See the Software License Agreement at the end of this document.

11. TRG Products Contact Info

We look forward to hearing from you. Please visit our web page or email us.

E-mail: sales@trgnet.com
Internet: http://www.superpilot.com/

12. Warranty

FlashPack Version 2.02 is provided without warranty. Support for FlashPack V2.02 can be obtained via the TRG Products internet site at www.superpilot.com.

13. Notes

1. "FlashPack seems slower than FlashPro when copying files"

Individual file copies should take about the same amount of time to copy with FlashPack as it does to copy with FlashPro. Multiple file copies, however, will take longer in FlashPack. This is because the API can only process a single file at a time. When FlashPro moves a group of files, it uses RAM buffering and only flushes to flash when it has to. FlashPack, using the API, must flush the buffers after every file. This accounts for the somewhat slower performance.

2. "Must I disable all Hacks to use FlashPack?"

Care should taken to NOT move an enabled Hack into Flash (or from Flash to RAM). If the hack gains control of the processor during the move, it is likely to crash the Palm, leaving the flash or RAM database system in an invalid state.

Also do NOT defrag with enabled hacks in flash.

FlashPack neither moves Hacks in and out of Flash nor performs defragmentation.

3. "How is the timestamp checking done?"

When FlashPro copies a DB to flash, it exactly copies the three timestamps as well. FlashBack checks the modification timestamp of the RAM copy and the flash copy prior to performing the back-up to flash. If the two times are identical, the flash copy is left as is. Under normal circumstances, the modification timestamp is set whenever a change is made to a DB, so this will catch changes to the DB and make sure that they are

backed up. The modification timestamp is also set whenever a HotSync is performed, so FlashPack will sometimes make a back-up when one isn't really needed. This will only be an issue if a DB isn't modified for a prolonged period and HotSyncs are being done at least as often as FlashPack schedules back-ups. It is possible to set the modification timestamp of a DB under program control, which could cause FlashPack to miss a back-up.

4. Saved Preferences

It was a deliberate decision to not save and restore the "Saved Preferences". This ensures that when you do a HotSync, the conduits know that you've experienced a hard reset and react accordingly.

Software License Agreement

TRG Products, Inc.
SOFTWARE LICENSE AGREEMENT

This agreement provides the user with a license to use the software only in conjunction one Palm Connected Organizer™ device or equivalent. You may not reverse engineer, decompile, or disassemble this software.

This software is owned by ***TRG Products, Inc.*** and is licensed to the user. Title for the product does not transfer from the licensor to the licensee. It is protected by United States copyright laws and international treaty provisions.

You may terminate the license at any time. ***TRG Products, Inc.*** may terminate your license if you fail to comply with the terms and conditions of the license. In either event, upon termination of your license, you must destroy all your copies of the software.

Satisfaction is guaranteed. If for some reason this product does not meet your needs you may return it within 30 days for a full refund of the purchase price.

Copyright 1999 TRG Products, Inc. All rights reserved.

TRG, the TRG logo, SuperPilot, FlashBuilder, Flash Pro, FlashPack, xtra xtra, and xtra xtra Pro are all registered trademarks of TRG Products, Inc.

Unless otherwise indicated, TRG Products, Inc. trademarks are registered in the United States and or may not be registered in other countries.

Palm, PalmIII, PalmIIIx, PalmV, and PalmPilot are trademarks of 3Com Corporation.
IBM WorkPad is a trademark of IBM.

Other brand and product names may be registered trademarks of their respective holders.

rev. 9/07/99