

TealLock User's Manual



Program Version 3.00
Last Updated: July 8, 2000

Table of Contents

Description	1
Contents	1
Installing	1
Overview	1
Using the Program	2
<i>TealLock Main Screen.....</i>	<i>2</i>
TealLock Status	2
User Password.....	2
Private Records	2
Lock and Off	2
Change Settings	3
<i>TealLock Settings Screen</i>	<i>3</i>
Image.....	3
Text	3
Options.....	4
Key Mapping	4
Hide/Show/Lock Activation	4
Advanced Settings	5
Administrator Password.....	6
<i>Tips.....</i>	<i>7</i>
Setting a Password	7
Emergency Password.....	7
Lock-screen Images	7
Lock-screen Text	7
Shortcuts	7
Welcome Screen Only	7
System Lockout Screen.....	8
Appendix A - Compatibility	8
<i>Visor Flash.....</i>	<i>8</i>
Defragger	8
Security	8
SafeHack	8
Appendix B – Revision History.....	9
Appendix C - Credits	11
Appendix D - Contact Info.....	12
Appendix E - Registering TealLock (Consumer Edition).....	12
Appendix F - Registering TealLock Corporate Edition.....	12
Appendix G - Disclaimer	12

Description

Thank you for trying TealLock. This program replaces the standard security application with a powerful and flexible system with many activation and customization options. This manual supports both the consumer program TealLock, and TealLock Corporate Edition, which adds special administrator access features designed for corporate use, available exclusively to our site license business customers.

Contents

This archive contains the following files:

Program files:

TEALLOCK.PRC	The TealLock program file
--------------	---------------------------

Document files:

LOCKDOC.PDF	This document in Adobe Acrobat (PDF) format
LOCKDOC.HTM	This document in HTML format (sans images)
LOCKDOC.PRC	This document in TealDoc format
REGISTER.HTM	TealPoint Registration form in HTML format
REGISTER.TXT	TealPoint Registration form in text format
LOCKIMGS.PDB	Samples of TealLock Background images

Installing



Use the Pilot installer to install the program file **TEALLOCK.PRC**. It will appear on the Palm Computing device after the next HotSync.

This manual is also provided in this archive as the PalmPilot document **LOCKDOC.PRC**, which can be viewed with our other application TealDoc.

Instructions on how to use the Palm installer are in the Palm Handbook that came with your Pilot, PalmPilot, Visor or WorkPad.

Due to the nature of this program (a security app), you are strongly advised to back up your organizer following the instructions in your PalmPilot handbook before activating TealLock and setting a password. In the rare event you should you forget your password or run a downloaded application that interferes with TealLock, you may otherwise have limited options in getting back to your data, so it's best to be safe just in case.

When upgrading TealLock from older versions of the program, you may safely HotSync the new version over the old, but you **must first turn off the previous version** before HotSyncing the new, or your Palm will crash. If significant features have been added in the new version, you may need to re-enter your password, settings and registration information.

Overview

TealLock replaces the standard security application on your PalmPilot. It offers greater flexibility in order to fit your individual security needs.

Once installed, activate TealLock by going into the PalmPilot applications screen and clicking on the TealLock icon. Click on the **ON** button to restart your PalmPilot and activate TealLock. In

some versions of the Palm OS, TealLock generates a dummy error message as a safe way to reset the device.

Using the Program

TealLock functions much like the standard Security application, but it offers many more activation and customization options. To do so, it maintains its own unlocking password. Similar to the standard app, you set or change a password which is used to lock the PalmPilot or protect private records from curious eyes. Note, however, that both the standard Security application and TealLock can hide and show private records, so you should set a password for the standard application as well as TealLock, so nobody can use the standard app to show records set hidden by TealLock. It's probably a good idea to make the passwords the same so there will not be any confusion between the two.

TealLock Main Screen



TealLock's **Main Screen** shows the current state of the program as well providing access to changing various settings and options.

TealLock Status

Indicates whether TealLock has been activated. When set to "on", TealLock can respond to Lock the PalmPilot or hide/show private records in response to pen strokes or power off. If a user password has been set, it will be requested before the TealLock can be turned off.

User Password

Set to either -Unassigned- or -Assigned-, the user password indicator shows whether a user unlocking password has been set in TealLock. While this indicator resembles one in the standard security app, note that both passwords are distinct and need to be set separately. For convenience, you should set them to be the same. Tap on the indicator to set or change the user password.

Private Records

Data records across all PalmPilot programs can be set to hidden or shown for programs that support them. The **Private Records** indicator shows their current state, and allows you to change this setting. If a user password has been set, you need to enter it in order to show private records that have been hidden.

Lock and Off



The **Lock and Off** button lets you quickly secure the PalmPilot from within TealLock. The device will be turned off, and when turned on again later, will appear on the TealLock **Locking Screen**. There are other, more convenient ways to do this when not in the program, accessible from the the **TealLock Settings Screen**, described below.

Change Settings

The **Change Settings** button lets you set the more interesting activation and customization options for TealLock from the **Settings Screen**.

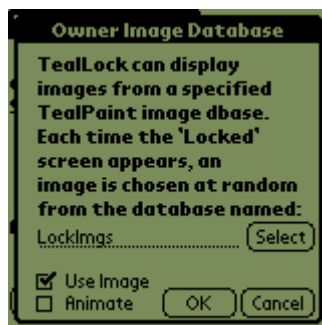
TealLock Settings Screen



From the Settings Screen, you can customize TealLock's appearance and functionality and access its powerful activation options.

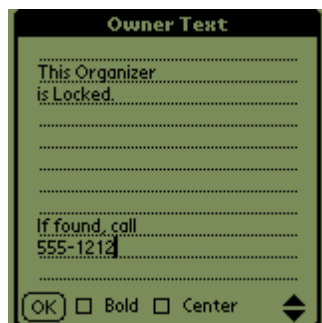
The following choices are available:

Image



Under **Image**, you can select a custom image to be used as a backdrop for the Locking screen. The image must be stored in a named TealPaint format image database, created either with TealPaint or the TealPaint Image Manager utility that accompanies TealPaint. If multiple images exist in the named database, one will be selected at random each time the PalmPilot is locked. You can also choose to treat the image database as an animation by selecting the “Animate” checkbox item.

Text



Under **Text**, you can select the content, font, and alignment of the text that appears on the Locking Screen. Typically, this consists of instructions, company, or owner information in case the device is lost.

Options



The **Options** popup lets you customize the appearance and functionality of the locking screen, adding various elements such as battery level indicator, private record hide/show checkbox, and a numeric keypad for entering numerical passwords (or perhaps for misleading would-be codebreakers).

Key Mapping



TealLock can remap the physical pushbuttons on a PalmPilot for easy pen-free passkey entry. By default, numbers are mapped to the buttons, but you can reassign the buttons in the **Key Mapping** dialog. When entering passkeys, the PageUp button functions as a backspace key, while the PageDown button acts as an 'OK' button, or 'Enter' key.

Hide/Show/Lock Activation



On the activation settings screen, you can set when TealLock hides private records, shows private records, or locks the device. Options include graffiti shortcut entry, on power off, if off a specified period of time, if turned off once a time of day has passed, or if turned on during a range of times. For all options except graffiti shortcut entry, days of the week can be specified where activation will occur. As showing private records requires passkey entry, only the shortcut option is available under the "Show when..." button.

Shortcut

Graffiti shortcut to hide/show private records or lock the PalmPilot. Write cursive 'l' followed by specified letter or letters. Note that capitalization is ignored and these shortcuts supercede any set in your preferences that may be supersets of these. For convenience, you should select letter that are not used in any of your graffiti shortcuts defined in the Palm **Preferences** app.

On power off

Hides private records or locks the PalmPilot when powered off

If off more than ____ minutes

Hide private records when off for more than a specified amount of time.

At time

Hides private records or locks the device at a specified time of day. Note that if the

PalmPilot is on at the time, it will lock after it is turned off or goes to sleep.

If on between ____

Hides private records or locks the device if turned on within a time range

Active on

Sets the days of the week when the above activation options (except shortcut) are active.

Advanced Settings



The Advanced Settings screen allows one to set options designed to fine-tune TealLock's behaviour or compatibility with other programs.

Advanced Settings include:

Use as welcome screen option

When set, this option causes the Locking screen not to request a password for entry, even if one has been set to secure private records. Using the option in combination with one of the **Lock when off** options, the locking screen can instead function as a simple "welcome screen" greeting a user with the date, time, and a company logo or inspirational quote, perhaps.

Call TealGlance on Unlock

Activates the program TealGlance after the unlock screen has been dismissed. TealGlance normally appears on power-on, but won't do so if the device is locked in TealLock.

Blank screen on lock/hide

When the TealLock is set to hide private records or lock the device on power-off, it normally blanks the screen to prevent the previous application from flashing up briefly on screen. This may interfere with a few drawing programs, notably Bugme!, which store their graphics directly on screen. For compatibility with these programs, you may wish to turn this option off.

Lock out silkscreen buttons

This option prevents third party popup programs and launchers from recognizing taps in the graffiti area when TealLock is locked.

Mask Passwords

When set, the password entry line on the TealLock locking screen masks the text being entered, showing simple boxes instead of the characters being entered.

Run on unlock ____

This option lets you specify a program to run when the PalmPilot is unlocked. When you do not use this option, TealLock just returns to the program that was running before the PalmPilot was locked.

Min password length

Useful mainly in conjunction with the administration password in TealLock Corporate Edition, the minimum password length feature allows an administrator to prevent a user from changing the password to anything shorter than a specified number of characters.

Activation timing

Allows one to adjust the TealLock's activation time when locking after power off for compatibility with third-party programs. Changing to either faster or shorter delay times may result in quicker overall switching times, as too fast a delay time may result in failed switching attempts and retries. Best results probably require experimentation.

Conceal Private Recs by Hiding/Masking

Adds support for Palm OS 3.5's private-record masking feature. When set to "masking", programs that support 3.5's making option will conceal private records as *Masked* instead of *Hiding* them.

Settings file

TealLock allows you to save the current settings, including password, activation state, and customization options, into a file that can be backed up onto the desktop. When moved into flash memory along with TealLock, the file can be used to lock the PalmPilot even after a full power loss or hard reset. To do so, first turn off TealLock, move it into flash, and turn it on again. Save the settings file, and move it into flash as well.

The passkey will be restored in event of memory loss and will be set as the system password as well. Use this feature with extra, extra care, as if you forget your passkey, you may end up permanently locked out of your PalmPilot.

The settings file can also be used to install identical settings on many devices if backed up onto the desktop backup folder using a utility like Backupbuddy. When installed with TealLock onto a PalmPilot that has never run TealLock, the file will copy its settings to TealLock and lock the device on activation.

Administrator Password



TealLock Corporate Edition Only:

The Administrator Password dialog lets you set a separate password deactivating TealLock or accessing the options screen. When an administrator password is set, TealLock's emergency password is disabled, and the User password will not be accepted for turning off TealLock or changing settings. The Administrator password, however, will grant full access to the device.

Tips

Setting a Password

If you set a password, whenever you lock the device, you'll be required to enter the key again to regain access to your data. If you hide private records, you'll also be asked for the same key to show the records again. Obviously, you should keep your password in a safe place. Be sure to set a password for the standard security app as well, so private records cannot be shown from there without a password. We recommend you set both passwords to the same value.

Emergency Password

When you register, you'll be given an emergency password that can be used to unlock your PalmPilot should you forget your normal password. This will be keyed to your Hotsync name and will not work on another PalmPilot. This is not the same as your registration key. Note that the emergency password only works with TealLock, not with the System Lockout screen, which comes up if someone tries to bypass TealLock by resetting the PalmPilot. Also, the emergency Password is disabled in TealLock Corporate Edition if an administrator password is set.

Lock-screen Images

You can select an image database to be used for a background for your "locked" screen. This database must be in *TealPaint* format and can be modified in *TealPaint*. You can have multiple images in this database. If you do, a random image will be chosen each time you lock the PalmPilot. Thus, you can create a number of images in *TealPaint*, and add text there if you wish for "quote of the day" functionality, inspirational images, etc. In the image-select screen, enter the name of the image database to use. The one provided with *TealLock* is called "LockImgs". If you change it, be sure to specify the name as it appears in *TealPaint* with the exact same spelling and capitalization.

Lock-screen Text

The text that appears on the "Locked" screen can be modified. It can be bold or not, but is always black on white and drawn from the left hand side of the display or centered. If you are using an image, you should make space for the text, or better yet, render the text into the images themselves.

Shortcuts

Use the shortcuts to hide private records, show private records, or lock the PalmPilot, at anytime. You do not need to be in a text-editing field for the shortcuts to work. A shortcut is a graffiti stroke which resembles a cursive lower-case 'l' followed by letter you select. A popup screen will tell you when private records are shown or hidden. When showing private records, if you have a password set, you'll be asked for the password to continue, and returned to the previous application when done.

Welcome Screen Only

If you want to use a password to protect your private records, but don't want to lock your PalmPilot, you can set the "Welcome Screen" option, which turns the "locked" screen into a "welcome" screen that does not require a password, but shows your message and waits for an "OK" before continuing.

System Lockout Screen

If your PalmPilot is reset while locked, TealLock will fallback to the system Lockout Screen in ROM for maximum security. This lockout screen has the text "System Lockout Screen" at the top of the screen. The password for this screen will only be the same as TealLock's password if you set them to be the same. The TealLock emergency password will not work for the System Lockout Screen, and there is no way past this lockout screen if you forget the password here.

Appendix A - Compatibility

As we cannot control the style and robustness of other products, we cannot guarantee compatibility with PalmPilot applications beyond those included from Palm Computing. However, we try to resolve compatibility issues as best we can.

Visor Flash

TealLock detects when it is installed in Flash and works properly when installed in the flash memory of flash-enabled Palm models using third party flash utilities. It cannot activate when installed in a Visor Flash card, however, because the card is removable.

Defragger

Be sure to disable TealLock before running a memory management program like *Defragger*, or changing the state of any hack that may patch into graffiti recognition routines.

Security

Note that the system security program is still active on your machine when TealLock is running. You should set a password for it so someone can't unlock your private records with the system security program. Also note that some programs which offer a "lock and off" feature may call the built-in security screen directly, either as a handy feature (LaunchPad) or as a security precaution (CheckIn) after a reset. When this occurs, you may seem to get a "double" locked screen. Note if this occurs, one screen is actually the system security screen, not TealLock. You can identify the System lock screen because it will say "System Lockout" at the top. When you get this screen, remember that you must enter your system password, which may differ from the one you entered into TealLock.

SafeHack

TealLock should make SafeHack unnecessary. When activated, SafeHack may interfere with TealLock activation.

Appendix B – Revision History

Version 3.00 – July 8, 2000

- New TealLock Corporate Edition with Administration password
- Streamlined settings interface screens
- Added support for hiding private records under OS 3.5 as “Masked” instead
- Added support for hardware buttons on all password screens
- Added support for mapping Palm V contrast button
- Added support for dismissing “wrong password” dialog with page-down button
- Added day-of-week activation
- Added optional touch pad on locking screen
- Added scrolling arrows on text screen
- Added optional centered text
- Added image selection from list
- Added adjustable clock font on lock screen
- Added optional battery meter on lock screen
- Added settings file for bulk installation and flash-resident protection after power loss
- Added option to disable screen blank
- Added option to disable silkscreen buttons when locked
- Added option to launch a specified app after unlocking
- Added option to adjust activation delay for compatibility with other programs
- Added option to set minimum required password length
- Added code to disable beam receive when locked
- Added color launch icon
- Added revised manual with images in .PDF format
- Fixed crash when running with Launch'em under OS 3.5

Version 2.10e - 2/24/00

- Fixed app-return after unlock bug in 2.10d

Version 2.10d - 2/10/00

- Added compatibility with pZip application compressor
- Made detection of Flash memory more rigorous, particularly for Visor flash card.

Version 2.10B - 12/4/99

- Fixed image drawing when BackdropEZ hack is running

Version 2.10 - 11/26/99

- Updated to work with Palm OS 3.3
- Added to safety pre-lock to prevent bypassing timed lock with a reset
- Added customizable key mapping for button presses on lock screen
- Added hardware button support on passkey entry to settings screen
- Added support so program can be installed in flash memory
- Added small icon for list view on app screen (OS3.0+)
- Added code to prevent blank lock screens
- Added code to keep pager/cell modem “ticks” from preventing timed locking
- Added code to allow more consistent timing
- Added color image support (on future devices running PalmOS 3.5 build 25 and TealPaint 4.0)

Version 1.87 - 4/19/99

- Reduced flashing when updating clock to once every 30 seconds

Version 1.86 - 4/18/99

- Fixed crash entering incorrect passkey to change settings or password

Version 1.85 - 3/5/99

- Fixed updating of clock screen
- Fixed screen update graphic glitches on lock screen
- Fixed Hotsync activation, disabling it when locking
- Fixed to not pass thru keys to datebook or todo app if already there
- Fixed NULL form bug for emulator and future OS compatibility
- Added fallback to System Lockout screen for total security

Version 1.72 - 11/5/98

- Added primitive optional lock screen animation

- Updated to work with new TealPaint 3.0 compressed images
- Fixed TealGlance 2.56 activation bug

Version 1.62 - 9/8/98

- Fixed time-locking at PM times
- Trial Redo activation code
- Fixed to activate correctly with 'no time' alarms
- Fixed to activate correctly after alarm

Version 1.56 - 8/9/98

- Resets alarm code on normal program launch

Version 1.53 - 8/4/98

- Fixed Redo/Alarm code
- Turned off autolock if "show" option is off
- Fixed Time Range lock/hide activation
- Fixed Unlock-with-reset bug
- Fixed Sleep-after-wake-with-Hotsync bug
- Fixed double-locking reset bug
- Added registration button/indicator
- Fixed lock/hide-at-time options to work even if pilot is on--will lock when turned off
- Added option for lock or hide at a specified time of day (if off)
- Added option for lock or hide if turned within a specified time range
- Fixed Alarm lockups
- Fixed Hotsync interaction

Version 1.44 - 6/18/98

- Changed not to also activate system lock on lock-and-off pen-up stroke
- Fixed bug preventing clean deactivation

Version 1.43 - 6/17/98

- Fixed overlocking bug.

Version 1.41 beta - 6/8/98

- Fixed bug resetting Locked pilot with Hackmaster installed

Version 1.40 beta - 6/7/98

- Fixed bug not locking after a Hotsync
- Locking restored after tap following alarm (was button press only)
- Increased delay for activation after Reset for increased compatibility
- Added option not to show "Show privates" checkbox on lock screen
- Added optional time/date clock on lock screen
- Added support for power off and lock option of screen-up keystroke (OS 2.x+) Note that this may add support of the "lock and off" option of some utility programs if they use the system keystroke to support this but not if they lock the pilot directly.
- Added pass-thru of App keys pressed on powerup
- Added auto Password-selection after invalid entry
- Fixed to pass correct parameters to sleep function
- Fixed version number

Version 1.32 - 4/13/98

- Fixes "Off till reset" bug on some machines

Version 1.31 - 3/30/98

- Fixes "blank screen" bug
- Added option to show hidden records on Unlock screen
- Password protects TealLock options
- Added Cut/Copy/Paste to owner text screen
- Added onscreen preview of bold/unbold owner text
- Adjusted autooff time (was off by 1 minute)
- Added optional border to lock screen
- Alarms no longer blocked when locked
- Fixed Alarm-interaction bugs

Version 1.20 - 3/5/98

- Added mapping for hardware buttons on unlock and show screens
- Accepts "Enter" stroke on "show" password screen.

- Blanks screen immediately when "Lock when off" option is active
- Improved memory defragger interaction
- Now correctly locks out TealGlance when first auto-locked
- Support for TealPaint compressed image format (upcoming)

Version 1.10 - 2/27/98

- Auto-activates passkey entry lines
- Added option to trigger TealGlance on unlock
- TealGlance now properly locked out after first timed lockout
- Now Blanks screen quickly on power up after timed lockout
- Added option not to echo characters on password entry
- Accepts "Enter" stroke on "locked" screen. (not yet on "show" screen)

Appendix C - Credits

Manual by Vince Lee, Tex Tennison, and Diane Dybalski

Appendix D - Contact Info

TealLock by TealPoint Software
©1999-2000 All Rights Reserved.

TealPoint Software
454 Las Gallinas Ave #318
San Rafael, CA 94903-3618

Please visit us at www.tealpoint.com, or email us at contact@tealpoint.com.

We look forward to hearing from you.

Appendix E - Registering TealLock (Consumer Edition)

Currently, you may register by snail mail, electronically through our website at www.tealpoint.com with a credit card and a secured server, or through PalmGear HQ at 1-800-741-9070. For the first option, the enclosed registration form is provided for your convenience. You may use this form or simply send the following to the address above.

-
- Product Name
- E-Mail Address
- HotSync User ID (Pilot Name Required for Passkey generation. It can be found on the main screen of the HotSync application on the Pilot as "Welcome _____" or in the corner on a PalmIII or higher)
- Check (drawn off a US Bank) or Money Order for (\$16.95 US) to TealPoint Software

Appendix F - Registering TealLock Corporate Edition

TealLock Corporate Edition is available exclusively for corporate site license customers. For more information, visit us at <http://www.tealpoint.com> or email business@tealpoint.com.

Appendix G - Disclaimer

We at TealPoint Software are committed to providing quality, easy-to-use software. However, this product is provided without warranty and the user accepts full responsibility for any damages, consequential or otherwise, resulting from its use.

This archive is freely redistributable, provided it is made available only in its complete, unmodified form with no additional files and for noncommercial purposes only. Any other use must have prior written authorization from TealPoint Software.

Unauthorized commercial use includes, but is not limited to:

- A product for sale.
- Accompanying a product for sale.
- Accompanying a magazine, book or other publication for sale.
- Distribution with "Media", "Copying" or other incidental costs.
- Available for download with access or download fees.

This program may be used on a trial basis for 30 days. The program will continue to function afterwards. However, if after this time you wish to continue using it, please register with us for the nominal fee listed in the program.

Thank you.