

## credits

First Printing, March 2000.

Application was designed and developed by Dan Rowley and LandWare, Inc. Design and development was aided with a Gaggia espresso machine.

The software incorporated into this product is the copyrighted work of LandWare, Inc. ©2000 LandWare, Inc. All rights reserved. "LandWare", WordSleuth and "Software for Terra Firma" are trademarks of LandWare, Inc. Other parties' trademarks or service marks are the property of their respective owners and should be treated as such.

## technical support

If you have any technical questions concerning this product please contact us via:

**Web:** [www.landware.com/support](http://www.landware.com/support)  
**email:** [support@landware.com](mailto:support@landware.com)

**Phone:** 201 261-7944  
**Fax:** 201 261-7949  
**Mail:** LandWare, Inc.  
PO Box 25  
Oradell, NJ 07649 USA

When you call, please have available your organizer, the WordSleuth software and a brief description of the problem. Having this information will ensure faster answers from our customer support representatives.

Technical support is available via phone Monday - Friday from 9:00am - 6:00pm EST

## copyright and distribution notice

No part of this publication may be reproduced, transmitted, transcribed, stored in a retrieval system, or translated into any language in any form by any means without the written permission of LandWare, Inc.

## product updates

Free maintenance updates are available to all registered users and can be downloaded from [www.landware.com/support](http://www.landware.com/support). Major updates that encapsulate significantly new functionality and/or documentation will be made available to registered users for a small update fee.

# CONTENTS

## Getting Started

Welcome	4
Installing Wordsleuth	4
Launching WordSleuth	4

## Using WordSleuth

Looking up synonyms	5
Word lookup history	5
Filtering by "part-of-speech"	6
Looking up words from other applications	6
Customizing operation	7

## welcome

Welcome to the WordSleuth thesaurus for the PalmOS. We thank you for purchasing this product and are confident that you will find this to be an indispensable addition to your handheld organizer. If you did not purchase this product directly from LandWare, we strongly recommend that you send in the registration form to ensure you are eligible for the benefits available to registered users, such as special offers, updates and technical support.

## installing wordsleuth

The Palm desktop organizer software and the docking hardware are required for the installation of this software. To install WordSleuth follow the steps below.

### Windows 95/98/2000/NT installation instructions

1. Insert the CD-ROM into your computer's CD-ROM drive.
2. The installer should automatically activate. If for some reason it doesn't then select Run from the Windows Start menu and enter x:setup, where x is the letter assigned to your PC's CD-ROM drive.
3. Follow the installer's instructions on screen.
4. Select the correct user name for your organizer and click on the *Next* button.
5. HotSync your organizer to complete the installation.

### Macintosh installation instructions

1. Insert the CD-ROM into your Macintosh CD-ROM drive.
2. Double click on the WordSleuth installer icon.
3. Follow the instructions on screen.
4. Select the survey you want to install from the list presented to you on the screen. Click *Install*.
5. The installer will automatically launch and present the HotSync Manager's *Install Handheld files* dialog. Ensure you have the correct user name selected. Close the *Install Handheld files* dialog.
6. HotSync your organizer to complete the installation.

## launching wordsleuth

Once installed, the WordSleuth icon depicted to the left will appear in the organizer's application launcher. By default it places it in the *Unfiled* category. Tap the icon to launch the application. Before you can begin using the software you will need to enter the registration code located on the CD-ROM sleeve.



# USING WORDSLEUTH

WordSleuth equips your handheld with a powerful aid for improving the precision and variety of your writing be it a memo, fax, or crossword. With over 210,000 synonyms at your fingertips WordSleuth ensures the right word is always a single tap away.

WordSleuth enables you to easily explore the "core" of the modern English language by offering powerful searching and filtering options. Replacement words can then be easily pasted back to any PalmOS application that supports text.

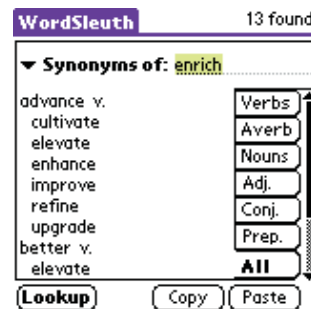
WordSleuth has been especially designed for those who want to make more varied use of the English language and we are sure you will enjoy using it as a tool for uncovering the richness of the language.

## looking up synonyms

WordSleuth can be used as a stand alone thesaurus without first having to type a word into a document or note. For example, you have the word 'enrich' in mind and would like to find a more expressive word:

### To lookup a word:

1. Launch WordSleuth.
2. Enter the word 'enrich' in the text entry line as illustrated.
3. Tap on the applicable "part-of-speech" tag. In this example we are searching for all synonyms so tap All.
4. Tap the Lookup button (or hit return on the GoType keyboard.)



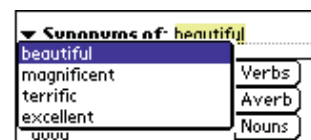
WordSleuth will retrieve the synonyms and display them in a scrollable list. Tapping on a synonym selects it for further lookup and (optionally) copies it to the organizer's clipboard for fast replacement of an existing word within the handheld.

## WORD LOOKUP HISTORY

Tapping the *Synonyms of* menu will provide a popup list of recently searched words. You can use this menu to return to an earlier thread of exploration.

USEFUL TIP: If no synonyms are found after a lookup, try the following:

- Search for the word root (i.e. flippancy -> flippant)
- Ensure the word is spelled correctly.
- Ensure you are searching for the correct part-of-speech.



## filtering by “part-of-speech”



WordSleuth allows you to filter results according to their part-of-speech by tapping on the appropriate tab. The following filters are supported: verbs (v), adverbs (adv), nouns (n), adjectives (adj.), conjunctions (conj.), prepositions (prep.) Searching for all synonym types can take a little longer.

## looking up words in other programs

WordSleuth is equipped with several features that facilitate its use with other applications on your handheld. If you intend to use WordSleuth to lookup words from other applications the following options should be set in the WordSleuth user preferences window.

1. Set the startup action to *Copy Clipboard into lookup field*.
2. Check the *Autocopy selection to clipboard* option.

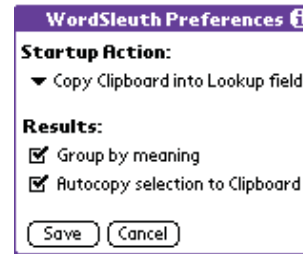
Instructions for setting these preferences can be found in the section overleaf.

Wordsleuth utilizes the clipboard to transfer words to and from other applications within the handheld.

**Example:** Lookup and replace ‘beautiful’ with a better adjective. (assuming the above settings)

1. Select the word beautiful
2. Tap the organizers’ menu button and select Copy from the edit menu (or perform a command C graffiti stroke)
3. Launch WordSleuth
4. Tap Lookup and Select the synonym
6. Reopen the original application
7. Tap the organizers’ menu button and select Paste from the edit menu (or perform a command P graffiti stroke).

## setting user preferences



WordSleuth allows you to customize the way the application works.

### To set user preferences

1. Launch WordSleuth
2. Tap the menu icon (to the left of the graffiti input area).
3. Tap the Options menu.
4. Tap Preferences.

The following attributes can be altered.

- *Startup action* — Specify the action WordSleuth should perform every time it is launched.
- *Results group by meaning* — Synonyms are grouped according to meaning in the results list.
- *Autocopy selection to clipboard* — Tapping a synonym in the search results list will automatically copy it to the clipboard.

## finally

We hope you enjoy using WordSleuth. We are committed to continually improving this product for you and we welcome your feedback—so if there are new features that you would like us to consider or just general comments please feel free to contact us at the address listed at the front of this document.

