

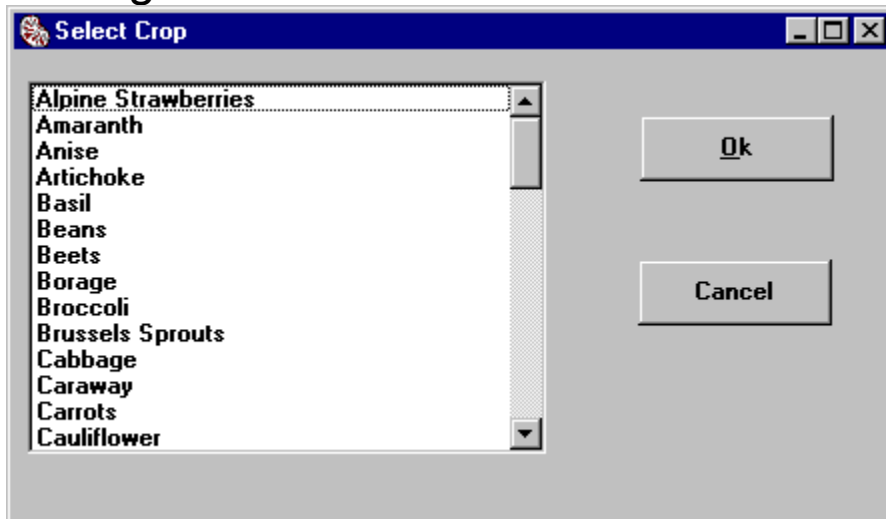
About The Seed Program

Select **About The Seed Program** from the Help menu to display a screen showing the program title, version number, copyright notice and the address for CyberNiche Software. There is also a button that will allow you to print an order form for purchasing the registered version of the program.

Add Another

The **Add Another** button allows you to quickly add a number of new records to the program's database. The Add Another button is only displayed while adding a record. Clicking on this button will save the information for the record you have just entered and immediately begin adding another record. It is equivalent to clicking the Update button, and then clicking the Add New button again.

Adding New Seeds



Click on the **Add** button to add a new new seed record to the database. A window will be displayed showing all of the Crops that are defined in the program's database. Click on the appropriate crop for the type of seeds you wish to add so that the crop name appears highlighted, then click on the **Ok** button. Click on the **Cancel** button if you change your mind and do not wish to add a new seed record. If the crop you want is not listed, you will have to add a crop record for it first (see [Crop Maintenance](#)).

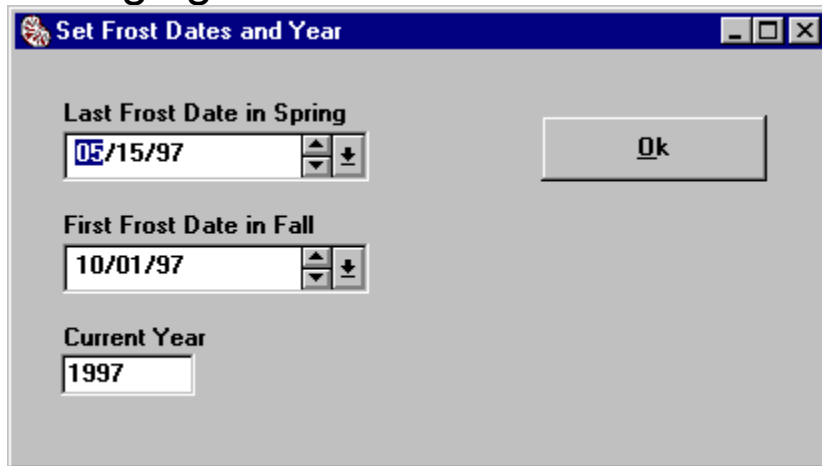
Note: the evaluation version of the Seed Program has a limited number of crop information records available. Register your copy of the program to receive approximately twice the number of predefined crop records. (You are also limited to creating no more than five seed records in the evaluation version.)

Cancel

The **Cancel** button is only displayed while adding a new record or modifying an existing record. Click on this button if you change your mind and do not want to update the program's database file with the new information you have just entered.

If the **Cancel** button is no longer displayed, you will need to click on the Delete button to remove the currently displayed record.

Changing Frost Dates and Year



The screenshot shows a Windows-style dialog box titled "Set Frost Dates and Year". It has a blue title bar with a small icon on the left and standard window controls (minimize, maximize, close) on the right. The dialog contains three input fields, each with a label and a date or year value. The first field is labeled "Last Frost Date in Spring" and contains "05/15/97". The second field is labeled "First Frost Date in Fall" and contains "10/01/97". The third field is labeled "Current Year" and contains "1997". Each of the first two date fields has small up and down arrows to its right. An "Ok" button is positioned to the right of the first date field.

Select **Change Frost Dates and Year** from the File Menu to enter the specific frost dates for your particular area. These dates are used by the program for calculating the proper planting dates for your area. When you first run the program, the frost dates for the author's home in Central Pennsylvania will be shown. You will need to change these dates unless you live in a very similar climate.

Your local County Extension Office (for gardeners in the United States) will be able to tell you the last and first frost dates for your area. You may also refer to gardening reference books, ask other gardeners or go by your own experiences if you have already been gardening in your current location for a few years.

The **Current Year** field indicates the year for which planting dates are calculated and for which the Planting Schedule is printed. The first time you run the program during a new calendar year, the program will ask if you wish to automatically update the database to the new year. If you wish to change the active year at any other time, you may do it here.

To modify the frost dates, click on the month, day or year of the date you wish to change and then enter the appropriate numbers or click on the up or down arrows next to the date. Click on the downward pointing arrow at the far right to display a pop up calendar from which you can select a new date.

When you make any change to the frost dates or year, buttons are displayed that allow you to **save** your changes or **cancel** and return to the seed maintenance screen without making any changes. If you click on the button to save your changes, all of the planting dates for seed records that you have created will be updated to reflect your changes.

Compacting the Database

Select **Compact Database** from the File menu to compress the Seed Program's database file and recover disk space from deleted records. This is an optional procedure that you may safely ignore. Unless you have actually deleted a number of crop or seed records from the program's database, you will not see any changes in the size of the Seed Program's database file (SEEDS.MDB).

Note: you should close all windows other than the main seed maintenance window before compacting the database so that the other windows will not lock the database file.

Contents -- The Seed Program

General Information

[Overview](#)

[Copyright and Disclaimer](#)

[Differences Between Evaluation and Registered Versions](#)

[Order Form](#)

[How to Contact CyberNiche Software](#)

[Terms Used: Fields and Records](#)

[Crop Records and Seed Records](#)

[Setting the Frost Dates](#)

Maintaining Seed Records

[The Main Seed Maintenance Screen](#)

[Adding New Seeds](#)

[Update](#)

[Cancel](#)

[Add Another](#)

[Deleting Seed Records](#)

[Navigating Existing Records](#)

[Finding a Seed Record](#)

[Maintaining Crop Records](#)

Seeds Data Fields

[Crop Name](#)

[Variety Name](#)

[Seed Source](#)

[Number of Seeds](#)

[Reorder Amount](#)

[Year Packed](#)

[Planting Times](#)

[Growing Hints](#)

[Notes](#)

[Days to Germinate](#)

[Days to Maturity](#)

[Plant Spacing - In Row](#)

[Plant Spacing - After Thinning](#)

[Plant Spacing - Between Rows](#)

[Plant Spacing - Intensive Spacing](#)

[Planting Depth](#)

File Menu Options

[Changing Frost Dates and Year](#)

[Importing Data from MS-DOS Version](#)

[Compacting the Database](#)

[Exiting From The Seed Program](#)

[The Crops Menu and Maintaining Crops](#)

Report Menu Options

Viewing or Saving Reports

The Planting Schedule

Inventory Reports

Report Output Window

Help Menu Options

Getting Help

About The Seed Program

Copyright and Disclaimer

The Seed Program is copyrighted 1995, 1997 by Michael Wolter. All rights reserved. It is not public domain nor free software. Non-registered users are granted a limited license to use the demonstration version of this product on a trial basis. If you intend to use The Seed Program on a regular basis, you are expected to register. For information on registration, see the Order Form.

A registered user is granted a single-user license to use this program on any one machine at any one time. A registered user is permitted to make a copy of the program for backup purposes only. Distribution of the registered version of the program is not permitted under any conditions. The shareware or evaluation version of the program may be copied and distributed without restriction as long as all the original files are included and are not modified in any way.

Trial Users of The Seed Program must accept this disclaimer of warranty:

The Shareware evaluation (trial use) version is provided AS IS. The author makes no warranty of any kind, expressed or implied, including without limitation, any warranties of merchantability and/or fitness for a particular purpose.

Registered Users of The Seed Program must accept this disclaimer of warranty:

The author warrants the physical disk(s) provided with registered versions to be free of defects in materials and workmanship for a period of ninety days from the date of registration. If the author receives notification within the warranty period of defects in materials or workmanship, and such notification is determined by the author to be correct, the author will replace the defective disk(s).

The entire and exclusive liability and remedy for breach of this Limited Warranty shall be limited to replacement of defective diskette(s) and shall not include or extend to any claim for or right to recover any other damages, including but not limited to, loss of profit, data, or use of the software, or special, incidental, or consequential damages or other similar claims, even if the author has been specifically advised of the possibility of such damages. In no event will the author's liability for any damages to you or any other person ever exceed the lower of suggested list price or actual price paid for the license to use the software, regardless of any form of the claim. The author specifically disclaims all other warranties, express or implied, including but not limited to, any implied warranty of merchantability and/or fitness for a particular purpose.

Crop Name

The first field on the Seed Maintenance screen is the crop name field. This is the name of the crop that you select from the crop list when you first create the seed record. You cannot change the crop once the record has been created. The crop is the general type of plant (beans, squash or tomatoes) rather than a specific variety name of a certain plant.

Crop Records and Seed Records

The Seed Program's database is divided into two types of database records. Crop Information records contain general information on a type of garden crop, such as beans or tomatoes. The program comes with this information already in place for a variety of different garden crops. Seed records contain information on a particular seed variety that the user has purchased and entered in the program. Seed varieties such as "Brandywine Tomatoes" or "Dragon Lingerie Beans" are examples of possible seed records. When first installed, the program contains no seed records, since there is no way to know what particular seed varieties you have purchased. When you enter a new seed packet into the program, most of the information from the crop information database is copied from the crop information database to the seed record. The "growing hints" (text information relating to the crop) is not copied into the seed record in order to conserve disk space, but all other information is copied to the seed record and may be modified without changing the original crop information record.

Days to Germinate

This field holds the average number of days it takes this type of seed to germinate -- to start growing and appear above the surface of the soil.

Days to Maturity

This field stores the number of days to maturity for a seed variety. The days to maturity is usually indicated in seed catalogs or on seed packets. In most cases, this will be the number of days between the time that the seed is planted in the soil and the time when the plant or its fruits reach harvestable size. This information is useful in planning planting times and, in areas with a short growing season, is useful in deciding whether some crops are appropriate for your area.

For certain crops that are almost always planted indoors for later transplanting, such as tomatoes and peppers, the "days to maturity" number that is recorded is the number of days from the time the transplant is planted in the garden until the time of the first harvest. Most seed catalogs follow this convention.

Deleting Seed Records

Click on the **Delete** button to delete the seed record currently displayed on the screen from the program. A confirmation window is displayed on the screen asking if you are sure you wish to delete the current record. Click on **Yes** to delete the record. Click on **No** to return to the seed maintenance window without deleting the current record.

Differences Between Evaluation and Registered Versions

Registered users of The Seed Program receive an upgrade to the latest version of the program that includes the full crop information database. The evaluation version contains only a subset of crop information. The evaluation version is limited to the creation of five seed records, while the registered version imposes no limits. The registered version of The Seed Program does not display the registration screen that is shown as you exit from the evaluation version. When the registered version of the program is purchased and installed, no information that has already been entered in the evaluation version is overwritten. Any seed information that has already been entered is preserved exactly as it is.

Exiting From The Seed Program

Select **Exit** from the File menu to close all windows and exit from the program. The evaluation version will display a window with information on how to register the program and will allow you to print an order form. The full version will exit from the program without this screen being displayed.

Finding a Seed Record



After you have entered several seed records, you may find it useful to click on the **Find** button to locate a particular variety. After you click this button, a small window will appear where you may enter the first few characters of the variety name you wish to locate. Alternately, since the seed records are sorted alphabetically by variety name, you may use the navigation buttons First, Previous, Next and Last to move to the information for a certain variety.

Getting Help



Context sensitive help is available throughout The Seed Program. Just press **F1** from any window and information will be displayed on the particular part of the program that you are currently using.

For more detailed information, use the options on the Help menu. Select **Contents** to display the complete listing of all topics in the help file. Select "**Search for Help on...**" to use the standard Windows Help procedure for searching for help on a particular topic. Select **Using Help** for general information on using Help files in Windows.

Growing Hints

The growing hints are advice for planting, growing and harvesting a crop. The hints take the form of text, stored in the crop information database and are displayed in a window when you click on the **Hints** button on the Seeds maintenance screen.

Use the <Page Down> key to display successive screens of text, and the <Page Up> key to go back to view previous screens. The up and down cursor arrow keys will move the text display one line at a time. Click on the **Ok** button when you are finished viewing the growing hints. The growing hints can be modified only through the Crop Maintenance screen. The same growing hints are displayed for all seeds of a particular crop.

How to Contact CyberNiche Software

You may contact CyberNiche Software by mail, by e-mail or by phone.

CyberNiche Software
4271 Carlisle Rd.
Gardners, PA 17324-8930
USA

e-mail: cniche@pa.net, or wolter@dickinson.edu

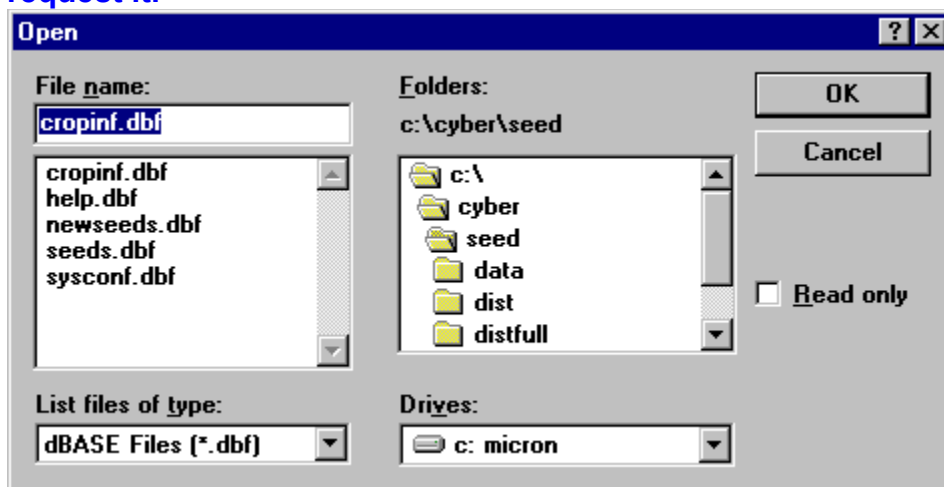
Phone: 717-486-8308

Our web site is at: <http://www.pa.net/~cniche/>

We will also do custom Windows programming work at reasonable rates.

Importing Data from MS-DOS Version

Note: The standard version of The Seed Program does not include the ability to import MS-DOS data. This prevents unnecessary files from being installed on your computer. You may request the version that can import data from the MS-DOS version of The Seed Program when you register. There is no extra charge for this version and you do not need to have registered the MS-DOS version to request it.



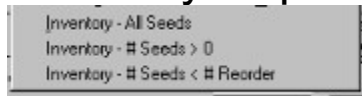
If you have used the MS-DOS version of the Seed Program and have requested the version of The Seed Program that can import MS-DOS data, you may select **Import Data from MS-DOS Version** from the File menu to preserve all of the information you entered in the MS-DOS version of the program.

Warning: the predefined crop information that comes with the program will be overwritten with any changes that you have made to the crop information database. No crop records will be deleted and no seed records that you have already created in the Windows version will be modified or deleted.

The program will prompt you with a standard Windows Open File dialogue to indicate the location of the crop information database file (CROPINF.DBF) from the MS-DOS version. You should not need to change the filename. This file may be located in the same directory (c:\seeds) that the Windows version is installed in. Select the proper folder for the location of this file and click on **Ok**. Click on **Cancel** if you wish to return to the seed maintenance screen without importing any data.

If you have selected the proper location of the crop file, the program will go through all of the crop records from the MS-DOS version database and update the Windows database to match. The program will next attempt to open the MS-DOS version seed database file in the same directory or folder and will create new seed records in the Windows version database for all the seed records that you had created in the older version. Finally, the program will update all of the planting dates in the imported seed records to correspond to the frost dates that you have defined in the Windows version. (If you have not yet updated the frost dates in the Windows version, you may do this after importing data.)

Inventory Reports



Select one of the Inventory report options from the Reports Menu to generate a report listing the seed records you have entered in The Seed Program.

All Seeds will list all of the seed records that have been entered in the program's database without exception.

Seeds > 0 will include only seed records where you have entered a number in the # of Seeds field that is greater than zero.

Seeds < # Reorder will include only seed records where you have entered a number in the Reorder # field and that number is greater than the number in the # of Seeds field.

The inventory report will either be displayed in a Report Output Window or a Save As dialogue will appear if you have chosen to save reports to text files.

Maintaining Crop Records

Planting Time	Before/After Frost	Weeks B/A Frost
Spring Inside	<input checked="" type="radio"/> Before <input type="radio"/> After	8
Transplant	<input type="radio"/> Before <input checked="" type="radio"/> After	1
Spring Outside	<input type="radio"/> Before <input type="radio"/> After	
Fall	<input type="radio"/> Before <input type="radio"/> After	

Days to Germinate: 10 In Row: 24
Days to Maturity: 80 After Thin: 24
Planting Depth: .25 Between Rows: 36
Plants / 1 Sq Ft 1

Buttons: Hints, First, Previous, Next, Last, Add New, Delete, Find, Ok

Select **Maintain Crops** from the Crops Menu to make changes to the crop information records in the Seed Program's database. Crop records store the standard information for a general type of plant, such as beans or tomatoes. The crop information displayed in this window serves as the default -- when you create new seed records for this crop, these values are used to start off your seed record.

Note: only a limited sample of the full crop information database is available in the evaluation version of the program. The registered version that you receive when you purchase the program has approximately twice the number of crop information records.

The buttons for navigating crop records, finding a specific record, adding and deleting records all function the same way as the they do for Seed Record Maintenance. Changes that you make to crop records will have no effect on seed records that you have already created, but the new information will be used for any future seed records that are created. Since Growing Hints are not stored separately for each seed record, changes you make to the hints will be seen whenever you view hints from a seed record.

Navigating Existing Records

If seeds have been added to the program already, and you are not in the middle of adding another new seed record, the key navigation buttons will be available.

Click the **First** button to move to the very first record. The seed records are sorted alphabetically by variety name after they have been entered

Click the **Previous** button to move to the seed record immediately before the current record. If the first seed record is already displayed, the computer will beep and the first record will remain on the screen.

Click the **Next** button to move to the seed record following the current record. If the last seed record is already displayed, the computer will beep and the last record will remain on the screen.

Click the **Last** button to move to the last seed record in the database.

Notes

Click on the **Notes** button to view or make changes to your notes for this particular seed record. Use this screen to record any information about this particular packet of seeds. Use your notes to keep track of when you planted the seeds, how good the germination rate was, how the crop performed, when you harvested the crop or how well you liked its flavor. Any information you wish to remember in connection with these seeds may be entered here.

From the notes screen you may use the up and down arrow keys to move the cursor up and down a line at a time, or the right and left arrow keys to move right and left a single character at a time. Holding down the control key while you press the right or left arrow keys will move the cursor a word at a time.

Click on the **Ok** button to save your changes when you have finished entering notes or changing the text that you have recorded there. Click on the **Cancel** button to discard any changes you have just made to your notes. **Warning:** canceling out of your notes will cause the loss of any newly entered information

Number of Seeds

This is an optional field in which you may enter the number of seeds you have, or the number of packets you have for this variety. If you do not want to bother even making a rough estimate of the number of seeds that you have, just leave this field empty.

This number can be used along with the reorder amount (the following field) to obtain a list of the seeds that you need to buy or reorder. This option of the inventory report will list all of the seed varieties for which the number in the "# of Seeds" field is less than the number in the "Reorder:" field.

Seed Program Order Form

To order, call 717-486-8308 or select Print Topic from the File menu to print this order form and mail to:

CyberNiche Software
4271 Carlisle Rd.
Gardners, PA 17324-8930

Date: _____

Ref No: SP200-1000

Name: _____

Address: _____

Phone: _____

E-Mail: _____

Where did you hear about the program? _____

What version of Windows do you use? _____

Registration Fee: \$25.00 per copy
Shipping & Handling: \$ 3.00 per order
PA residents add 6% Sales Tax (\$1.68 for one copy)
Outside of the US, add \$1.50

Checks must be payable in US dollars and drawn on a US Bank

Circle one: Visa Mastercard Check Money Order

Card #: _____

Exp. Date: ____ / ____

Signature: _____

Overview

The Seed Program is a database system for garden seeds. Use it to help organize your seeds -- keep track of what seeds you have purchased, where they are from, how old they are and what seeds you need to buy. The program will print a planting schedule for the seeds you have entered, so you know exactly when and how to plant all of your seeds. The database includes extensive information for a wide variety of vegetable and herb seeds. Available information includes proper planting procedure, care for the crop, organic methods of combating pests and diseases, and the proper harvest and storage of the crop.

The Seed Program can also serve as a garden journal for you to enter notes about your experiences with specific varieties of garden crops. In addition to the planting schedule, a variety of reports are available to allow you to access the information supplied with the program or the information that you enter. In general, reports can be displayed on the screen, sent to your printer or sent to a file on disk. The Seed Program is designed to be easy to use, for gardeners with any level of computer experience. Context sensitive help is available throughout the program.

Plant Spacing - After Thinning

This is the distance that should separate full grown plants grown in traditional rows.

This spacing will give the plants sufficient room to grow when they have reached full size. Many crops are traditionally planted closer together when the seed is first placed in the soil, and later "thinned" to the proper distance by some plants being pulled out and discarded. This procedure of planting seeds close together and later thinning prevents gaps from appearing if some seeds fail to germinate.

Plant Spacing - Between Rows

The distance (in inches) that should separate rows of a crop, when it is being grown in traditional rows (as opposed to "wide beds"). This distance should be sufficient to accommodate the size of the fully grown plants. In some cases, you may want to adjust this distance to take into account the width of a rototiller or other method of cultivation.

Plant Spacing - In Row

This field shows the distance apart (in inches) that seeds should be planted when they are being planted in traditional rows. In many cases, this distance will be closer than the final separation distance of the full grown plants, and the plants will need to be thinned after they have begun to grow.

Plant Spacing - Intensive Spacing

These two fields ("Plants / Sq. Feet") are used to show the proper plant spacing when using "intensive" or "wide bed" growing techniques, rather than the traditional single rows. This style of gardening is also sometimes called "square foot gardening."

The idea of this gardening method is that traditional single rows are designed more for commercial agriculture than for the home gardener. Traditional single rows and spacing may leave room for tractors and other mechanical equipment. The gardener who will be cultivating with nothing more cumbersome than a hoe can successfully plant crops much closer together. This leads to a more efficient use of space (more produce from the same sized bed), less weeding and less watering.

Usually, this spacing is expressed in a certain number of plants per square foot. In this case, the first field shows the number of plants that can be grown in a single square foot. Some bulky crops, such as some squash, will require more than a single square foot, in which case a "1" is entered in the first field and the second field is used to indicate the number of square feet that are needed for a single plant.

Planting Depth

This field shows the proper planting depth for seeds in inches. This should be considered an average planting depth. Gardeners may wish to plant seeds deeper in warm, dry weather to conserve moisture.

Planting Times

Planting Time	Before/After Frost	Weeks B/A Frost	Planting Week	Appear on Schedule
Spring Inside	<input checked="" type="radio"/> Before <input type="radio"/> After	8	3/16/97	<input checked="" type="checkbox"/> Yes
Transplant	<input type="radio"/> Before <input checked="" type="radio"/> After	1	5/18/97	<input checked="" type="checkbox"/> Yes
Spring Outside	<input type="radio"/> Before <input type="radio"/> After			<input type="checkbox"/> Yes
Fall	<input type="radio"/> Before <input type="radio"/> After			<input type="checkbox"/> Yes

The fields in this section of the seed maintenance window are used to record the planting times for the seed you have selected. The four rows represent four types of seed planting that are most often used for various crops:

Spring Inside - used for seeds that are started indoors and later transplanted

Transplant - for the date that plants are transplanted out in the garden after having been started indoors

Spring Outside - for seeds that are planted directly outside

Fall Outside - for seeds that are planted in the fall or late summer rather than the spring or late winter

The first three of these planting times are associated with the last frost date in the spring. The Fall Outside planting line is associated with the first frost date that occurs in the fall.

Each of these four planting times have three fields of database information that are associated with them. The "Before/After Frost" field indicates whether the seed should be planted before or after the frost date. Click on the Before or After option button to select the correct planting time. If you change your mind and wish to remove the selected option, click to select it and then press the **Backspace** or **Delete** buttons on your keyboard.

The "Planting Week" field stores the number of weeks before or after the frost date that the seed should be planted. When you enter a week number and click on a Before or After option button, the program uses this information, along with the frost dates you have entered, to calculate the correct planting date. This date is always a Sunday, since the planting schedule is organized on a weekly basis. Planting dates are always approximate, and will change slightly from year to year depending on the weather, so the planting week provides the correct level of detail. The third field "Appear on Schedule" indicates whether the current seed variety should actually be printed on the planting schedule for the date displayed.

For most crops, all four lines are not used. An example may be helpful: tomatoes are typically started indoors and later transplanted into the garden. For tomatoes, the first two planting date lines would be used: "Spring Inside" and "Transplant." Tomatoes, needing a long growing season, cannot be planted directly outdoors in most climates, and cannot be grown as a fall crop, so the third and fourth lines would be left blank. Carrots are not started indoors and transplanted because of their long tap root, so the

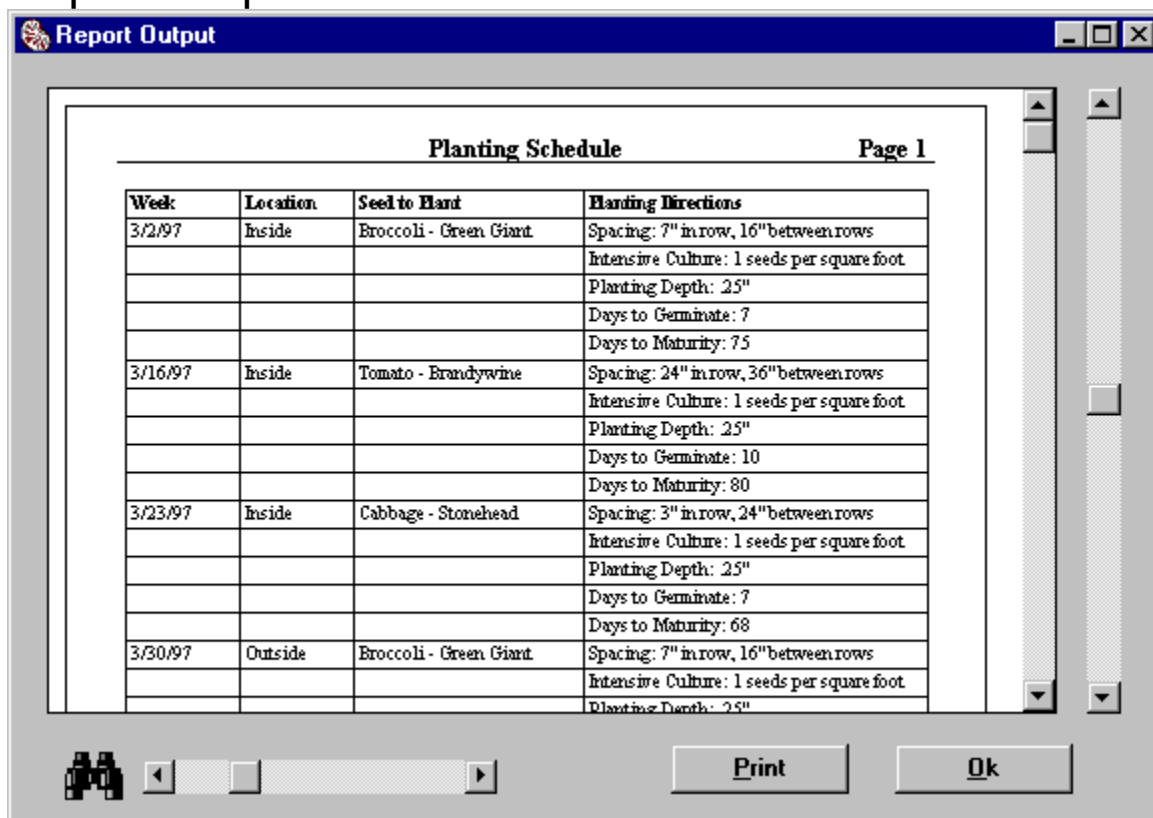
first two lines would be left blank. Carrots can be planted as either a spring or fall crop, so the third and fourth lines could both be used for carrots.

When you create a new seed record and select a crop name from the list, recommended planting times and dates from the crop database are automatically provided. This information can be changed as you enter the seed record. The planting times provided with the program are intended only as general advice, since gardeners often have strong individual preferences. Some gardeners start growing their tomatoes just a few weeks before planting so that young, actively growing plants can be placed out in the garden. Other gardeners start tomatoes during the winter and transplant them several times indoors in order to have large, robust plants to transplant into the garden when the weather warms. Such gardeners will want to customize The Seed Program by modifying the planting dates. The suggested planting dates that come with the program will be most useful to beginning gardeners, or to gardeners trying out new crops.

Reorder Amount

This optional field contains the "reorder amount." The "Inventory - # Seeds < # Reorder #" report will allow you to produce a list of seed varieties for which the reorder amount is higher than the seed count. This field may be left blank.

Report Output Window



The **Report Output Window** is the standard screen where all reports are displayed. The scroll bar on the far right will allow you to select different pages, if the report is longer than one page. The **Print** button will print the report that is currently displayed. The **Ok** button will close the Report Output Window.

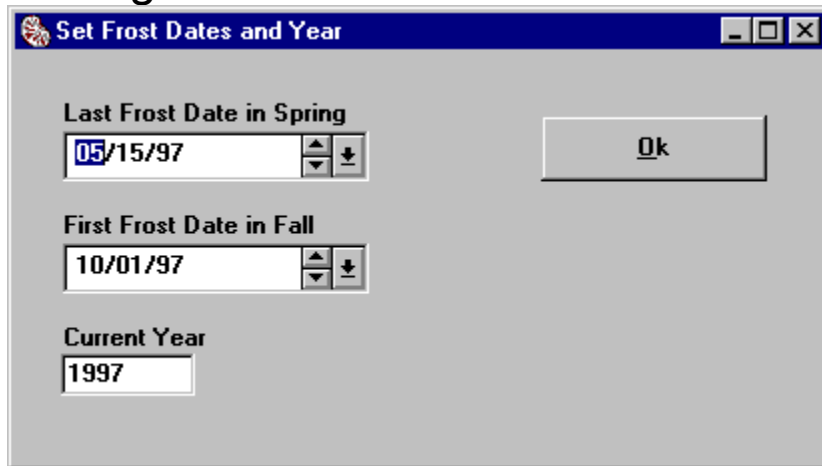
The horizontal scroll bar at the bottom (next to the binoculars) is the zoom control. The zoom control allows you to enlarge or reduce the size of the report on the screen. Reduce the report size in order to see an entire page on the screen at one time. Enlarge the report size in order to read the details of the report. If the report is enlarged to a size that will not fit in the window, scroll bars will appear immediately next to the report text to allow you to view the entire report.

Click on the **Print** button to print the report that is currently displayed on the screen. When you have finished viewing or printing the report, click on the **Ok** button to close the Report Output window. You will return to the Seed Maintenance window, where you may continue with other work.

Seed Source

Enter the name of the source that you obtained the seeds from. This may be the company that packaged the seeds, the mail order company that the seeds were ordered from, or just the name of the person who gave you the seeds.

Setting the Frost Dates



Set Frost Dates and Year

Last Frost Date in Spring
05/15/97

First Frost Date in Fall
10/01/97

Current Year
1997

Ok

One of the first things you should do when starting to use The Seed Program is to set the correct last and first frost dates for your particular area. See [Changing Frost Dates](#) for detailed instructions. The program is shipped with the proper frost dates for the author's home in South Central Pennsylvania, but your region's dates will probably be different.

Terms Used: Fields and Records

In explaining the use of The Seed Program in this documentation, two general database terms are widely used: "fields" and "records". A field is a single piece of information stored in a standard way. The planting depth of a seed, represented as a number of inches, is a piece of information that the program stores for every crop in the database. This value is an example of a field. A record is made up of a collection of fields. A seed information record contains a number of different fields, including variety name, seed source, year purchased and many more.

The Main Seed Maintenance Screen

The Seed Program

File Crops Reports Help

Crop Name: Tomato # of Seeds: 25

Variety Name: Brandywine Reorder #:

Seed Source: PineTree Year Packed: 1997

Planting Time	Before/After Frost	Weeks B/A Frost	Planting Week	Appear on Schedule
Spring Inside	<input checked="" type="radio"/> Before <input type="radio"/> After	8	3/16/97	<input checked="" type="checkbox"/> Yes
Transplant	<input type="radio"/> Before <input checked="" type="radio"/> After	1	5/18/97	<input checked="" type="checkbox"/> Yes
Spring Outside	<input type="radio"/> Before <input type="radio"/> After			<input type="checkbox"/> Yes
Fall	<input type="radio"/> Before <input type="radio"/> After			<input type="checkbox"/> Yes

Hints

Notes

Days to Germinate: 10 In Row: 24

Days to Maturity: 80 After Thin: 24

Planting Depth: .25 Between Rows: 36

1 Plants / 1 Sq Ft

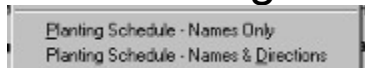
First Previous Next Last

Add New Delete Find Help

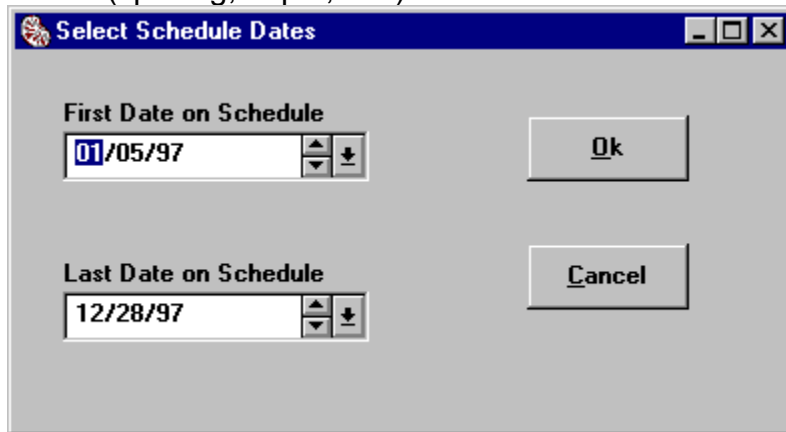
When the program is first started, the **Seed Maintenance** window will be displayed. The Crop Name, Variety Name, and a number of other data fields are displayed on this screen. The first time the program is run, these fields will all be blank, since no seed records will have been created yet. Click on Add New to start entering your seeds in the program.

Buttons on this window allow you to view Growing Hints, enter Notes for the current seed variety, move to different seed records and Add or Delete seed records. The Help button will display the program documentation that you are now reading.

The Planting Schedule



Select one of the Planting Schedule options from the Reports Menu to generate a planting schedule report based on the planting dates for the seed records you have entered in the program. The "Names Only" report will include columns for the planting week, what type of planting should be performed (inside, outside or transplanting) and the crop and variety name of the seeds to be planted. The "Names and Directions" report will include this information in addition to the planting information from the crop record (spacing, depth, etc.).



A window will be displayed where you may select the period of time that you are interested in. Click on **Ok** to accept the default dates and generate a schedule for the entire year, or click in the date fields and change these dates to narrow the planting schedule to a shorter period of time. Click on **Cancel** to return to the seed maintenance window without generating a schedule.

The planting schedule will either be displayed in a Report Output Window or a Save As dialogue will appear if you have chosen to save reports to text files.

Update

The **Update** button is displayed only when adding a new record or modifying an existing record. Clicking **Update** will save the newly entered or changed seed record to the program's database file and allow you to continue with other work.

Variety Name

Enter the name of a particular variety of seeds in this field. For example, "Red Sails" is a variety of Lettuce. This field may be left blank if the variety is unknown or if the seeds are not for a named variety. You may change the variety name at any time just by entering a new name in this field.

Viewing or Saving Reports



The first two options on the Reports Menu allow to choose whether reports are displayed with the option to print or whether the report information is saved as a text file. By default, reports will be displayed in a Report Output Window, where you can examine the different pages of the report on the screen or click on a button to print the report. The first menu option ("View/Print Reports") is checked to indicate that this is the default setting.

Select the second Reports menu option to save the contents of reports to a text file. The check mark will be displayed next to this option after you select it. When the "Save Report to Text File" option is checked and you run one of the reports, a standard Windows Save As dialogue window will be displayed. Click on **Ok** to use the default filename that is shown, or enter an alternate name and/or folder.

Year Packed

Enter the year that the seeds were packed for. This information will help you keep track of the age of your seeds, so you will know which seeds should be used up soon, and which seeds should probably be replaced because they are too old. The year entered in this field will usually be the current year, so the program will automatically place the current system year in this field. If you need to enter a different year, you may double click on this field so that the year listed there is highlighted and then type the new year to replace the displayed year.

