

## COPY

This function begins copying all selected files and/or directories from the Source directory to the Target directory.

Before beginning the Copy operation, File Plus will first scan all selected directories and files and double-check to be sure they will all fit into the Target directory.

If any files in the Source directory exist already in the Target directory, then File Plus will take the action indicated in the Program Settings configuration dialog.

### **See Also:**

Copy As   Move   Move As

## COPY AS

This function is identical to the Copy function, except File Plus will ask you to Rename each selected file or directory before each gets copied.

### See Also:

Copy   Move   Move As

## RENAME

This function allows you to rename all the selected files and/or directories in Source window.

### **See Also:**

Copy As   Move As

## MOVE

This function performs two different actions depending on the contents of the Source and Target directories.

If the Source and Target directories both contain the same drive I.E. "C:", then File Plus will move the files or directories by just renaming them into the new (Target), path. This is actually very fast.

If the Source and Target directories indicate different drives, then File Plus will perform a Copy, if this is successful then File Plus will delete the Source file/directory.

### See Also:

Copy   Move As

## MOVE AS

This functions identically to the Move function, except File Plus will prompt for a new name for each selected entry.

**See Also:**

Copy As   Rename

## CLONE

This function allows you to make a local duplicate of a file in the same directory.

For each file or directory selected in the Source, File Plus will prompt for a new name, then make an exact duplicate of that file or directory.

**See Also:**

Rename

## DELETE

This is one of File Plus's most powerful functions!

When selected, File Plus will bring up a dialog informing you of how many files and directories have been selected for deletion, and provide you with one last chance to back out (this last chance warning can be disabled in the Program Settings dialog, NOT RECOMMENDED).

Before File Plus deletes any directories that contain files or other directories, it will prompt once again (this warning CAN'T be disabled).

File Plus will also prompt if it comes across files that are Read-Only, Hidden, or System files.

## MAKE DIRECTORY

This function will create a new directory in the Source path indicated.



## FILE ATTRIBUTES

File Attributes as seen by File Plus are displayed directly following the file size in the file display window.

- **Read-Only** These files are indicated by an 'R'.
- **Hidden** These files are indicated by an 'H'.
- **System** These files are indicated by an 'S'.
- **Archived** These files are indicated by an 'A'.

## FINDING FILES

File Plus provides a very simple and extremely fast means of searching all the devices on your system or network for a particular file(s).

The Find Files dialog presents you with the following options for narrowing down your search criteria:

- **Search Only Source Directory**
- **Search All Fixed Devices**
- **Search All Remote Devices**
- **Search All CD-ROM Devices**
- **Search All Removable Devices'**

Whenever a match is found, File Plus will give the file name and complete path, then ask if you want to continue the search or stop there.

### **Search Only Source Path**

File Plus will only search the path indicated in the Source window.

### **Search All Fixed Devices**

File Plus will search all the Hard drives and RAM drives on your system.

### **Search All Remote Devices**

File Plus will search all the network or remote drives currently seen by your system.

### **Search All CD-ROM Devices**

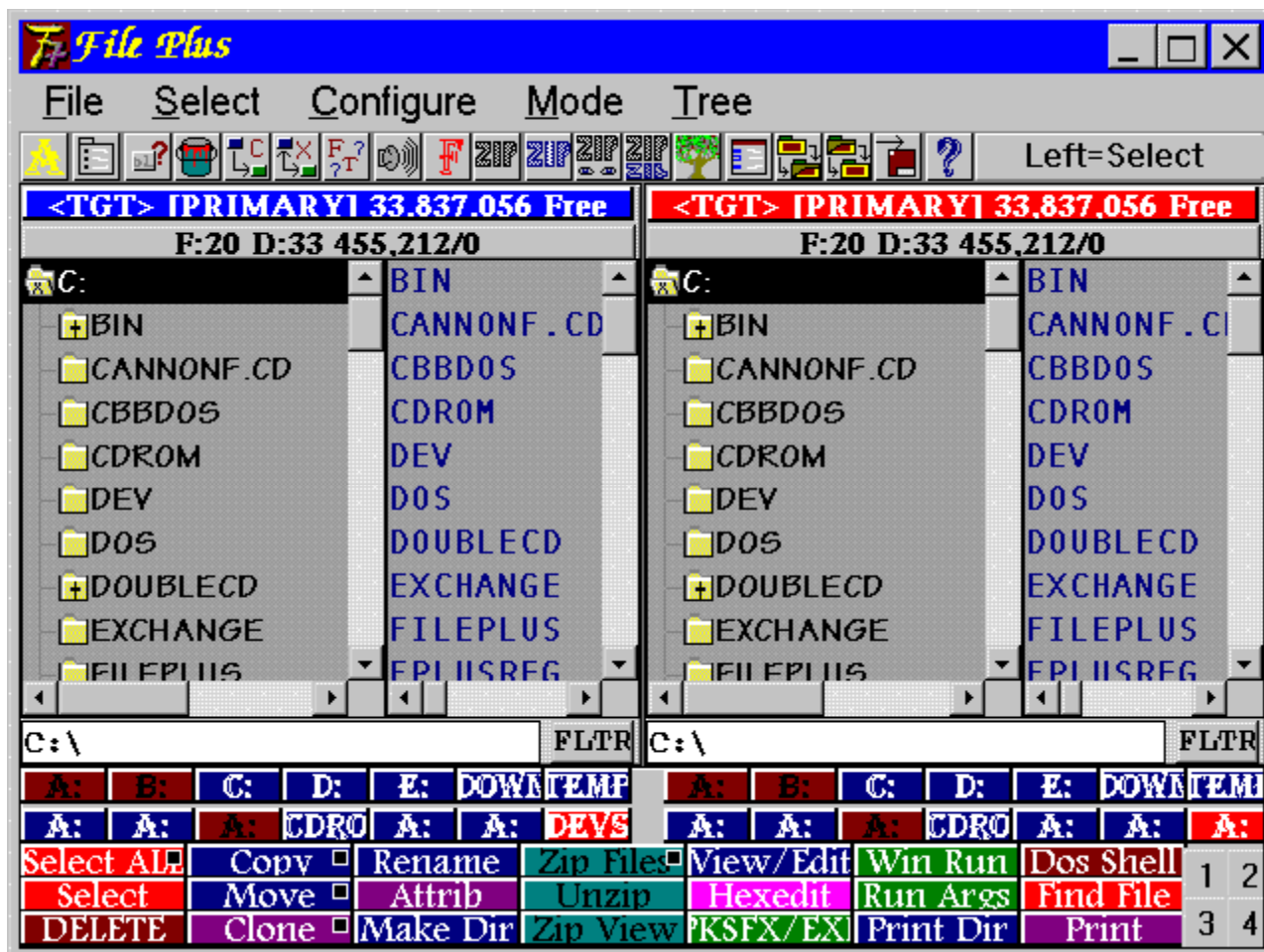
File Plus will search all of your CD-ROM drives.

### **Search All Removable Devices**

File Plus will search all of your removable drives, (floppys, zips, etc..).







Click spot on screen for help

## About Tool

This button will bring up the File Plus info window.

## Font Options Tool

This button starts the File Plus font configuration.

### **Toggle Tree Mode Tool**

This button switches File Plus between Tree mode and Normal mode.

## Tree Display Window

This window gives a graphic representation of the current tree hierarchy. Any directory that contains other directories are indicated by a '+' symbol on the folder graphic.

Clicking directly on the folder itself will either expand or collapse the branch it is associated with, depending on its current condition.

### Expand Current Branch Tool

This button will expand all sub-directories below the currently selected branch indicated in the Source tree window.

## UnZip Options Tool

This button starts the File Plus UnZip Options configuration window.

### **Collapse Current Branch Tool**

This button will collapse all sub-directories below the currently selected branch indicated in the Source tree window.



## Sound Config Tool

This button starts the File Plus Sound Options configuration window.

## Set Filter

This button allows you to specify a filter for File Plus to weed out any files you may not want to view.

## Drive Status

This bar shows three different pieces of information for the drive that is referenced in that window:

- <SRC> or <TGT> Indicates if that window is currently Source or Target
- [DriveName] Shows the name of the volume in that drive.
- Bytes Free Amount of free space still remaining on drive.

Also, if you click the left mouse button on this bar, the path that is contained in the opposite window will be loaded into this window.

## File Window

This window gives you the contents of the currently viewed directory. The information given follows this pattern:

FILENAME.EXT	X,XXXX,XXXX	RHSA	DATE	TIME
File/Dir Name	File Size	Attribs	Date	Time

## Path Buttons

This button shows you the current path loaded into the indicated window. Selecting this button presents a dialog for you to type in a path of your own.

## Button Config Tool

This button puts File Plus in or out of button configuration mode.

## Zip Backup Tool

This button starts the File Plus Zip Backup Options configuration window.

### **Save Configuration Tool**

After pressing this button, File Plus will write out its current configuration to disk. This includes all program settings, options, window locations, and dimensions.



## User Buttons

These are your user function buttons. You can configure these to any function you want.

## **File Types Tool**

This button starts the File Plus File Types configuration window.

### **Toggle Show Dirs Tool**

This button toggles File Plus's Show Dirs in Tree Mode setting.

## Button Paint Tool

This button starts the File Plus button paint window.

## Zip Options Tool

This button starts the File Plus Zip Options configuration window.

### Window Status Indicator

This bar gives information about the number of directories and files shown in the given window.

On the left of the SLASH is the amount in bytes of the files in that directory, on the right is the amount of SELECTED bytes.

If you click on this bar with the left button, the directory indicated by this window will be re-scanned.

## Zip View Options Tool

This button starts the File Plus Zip View Options configuration window.

## Path Buttons

These are the user-configurable custom path shortcut buttons.



### Button Exchange Tool

This button allows you to exchange two user buttons or two path buttons.

## Button Copy Tool

This button allows you to copy one user or path button to another.

## Message Bar

This bar gives you help on various parts of the File Plus main display.

## Program Settings Tool

This button starts the File Plus Program Settings window.

## Help Tool

This button brings up the File Plus Context-sensitive help document.

## Bank Switches

These buttons flip between the four banks of user-configurable function buttons.



See [Tree mode](#) for help on the other main display items.

BC40RTL.DLL	212,48	▲	BLUEDOT.BMP	19	▲
BWCC.DLL	157,12		CONTENTS.RTF	5,81	
DESC.TXT	50		CONTENTS.TPC	3,91	
FILE_ID.DIZ	91		FILEFUNC.RTF	8,39	
FILEPLUS.DEF	16,44		FILEFUNC.TPC	5,90	
FILEPLUS.EXE	443,90		FILEPLUS.HLP	345,72	
FILEPLUS.WRI	41,21		FILEPLUS.HPJ	36	
FPFTC.DEF	3,98		FILEPLUS.HPS	54	
FUNC.BAT	3		FPHELP.H	1,23	
FUNC.PIF	54	▼	FPLUS.BMP	308,27	▼
◀		▶	◀		▶

Click spot on screen for help



## Parent Button

Clicking this button will back up one directory level.



## Button Configuration

There are two different types of user-configurable buttons in File Plus.

- The Drive/Path buttons. There are 14 for each window, a total of 28.
- The User Function Buttons. There are 4 banks of 21 buttons, each can have 2 functions.

To begin configuring buttons, either click the Button Config Tool icon above the directory windows, or select Configure Buttons from the Configure Menu.

Once in configure mode, select the button you want to edit, for the User buttons, you can use the left or the right mouse button. The left button selects the function on "top", while the right button selects the "back" function.

You can tell which buttons have a right mouse button function assigned by a small white square in the upper right hand corner of the button. Path buttons only have one function.

### **See Also:**

[Configuring User Buttons](#)

[Configuring Path Buttons](#)

## Path Button Text

This is where you enter the text that you want displayed in the button you are editing.

## Actual Path To Be Read

This is where you put the actual path you want read in when you select this path button.

**Example:**      **C:\TEMP**

## Path Button Dialog

The Path Button dialog consists of the following fields:

- Button Text
- Actual Path to Be Read

### **See Also:**

Configuring User Buttons

## User Button Dialog

The User Button dialog consists of the following fields:

- Function Class
- User Function Modifiers
- Button Text
- Sound Effect
- Hotkey
- User Function Data

### **See Also:**

Configuring Path Buttons

## User Function Data

This is where you enter your User Function Data.

This is the workhorse of any User Function.

The following special codes will be expanded in your function line: ' '

- %s - Source Directory WITH trailing slash.
- %S - Source Directory WITHOUT trailing slash.
- %f - Selected entries from Source (Dir and File).
- %F - Selected entries from Source (File only).
- %d - Destination Directory WITH trailing slash.
- %D - Destination Directory WITHOUT trailing slash.
- %a - Request string entry. Optional Entry Text ex. %aEnter FileName.

### **EXAMPLES:**

User Function Example 1

User Function Example 2



## User Function Hotkey

This is where you define the Hotkey you would like to use to activate this function.  
**NOTE:** This entry is optional.

## Button Text

This is where you enter the text that you want displayed in the button you are editing.

## User Sound Effect

Here you can enter or browse for a .WAV file you would like File Plus to play whenever you select this button.'

**NOTE:** This entry is optional.

## User Function Modifiers

Whenever you select User Function as the Function Class, this group of buttons become available for you to modify certain actions of File Plus concerning its behavior when your function is run.

The function modifiers do the following:

- **Reload Source:** This will force File Plus to re-scan the contents of the Source directory after performing your User Function.
- **Reload Target:** This will force File Plus to re-scan the contents of the Target directory after performing your User Function.
- **CD To Source:** File Plus will change its current Drive and Directory to that of the contents of the Source directory.
- **CD To Target:** FilePlus will change its current Drive and directory to that of the contents of the Target directory.
- **Pause Each:** If your User Function will run one program multiple times in DOS, then File Plus put a "Press Any Key.." message after each command is run.
- **Pause at End:** File Plus will put a "press Any Key.." message at the end of your DOS Function.
- **Windows Func:** This will force File Plus to recognize the indicated command in your User Function Data as a Windows program.

## Function Classes

### No Function

Copy

Move

Delete

Zip Files

Zip Backup

Select All

UnSelect All

Select By Pattern

Size Directory

Expand Branch

Save Config

Zip Options

Zip Backup Options

Configure File Types

Font Options

Toggle Tree Mode

Smart Execute

Paint Buttons

Exchange Buttons

Clone Files/Dirs

### User Function

Copy As

Move As

Rename

UnZip Files

Zip View

File Attributes

Make Directory

Play .WAV File

Print Directory

Collapse Branch

Program Settings

Zip View Options

UnZip Options

Sound Options

Find File

Toggle Show Dirs

Print Text File

Copy Buttons

## No Function

This function assures the button will perform no action at all.'

## User Function

This is the most powerful function in File Plus.

With this function you can create any custom command you wish, either DOS or Windows based.

### **EXAMPLES:**

User Function Example 1

User Function Example 2

## Zip Files Function

This function will begin a ZIP operation.

**See Also:**

[Zip Options](#)



## UnZip Files Function

This function will begin an UnZIP operation.

**See Also:**

[Unzip Options](#)

## Zip Backup Function

This function will begin a ZIP Backup operation.

**See Also:**

[Backup Options](#)

## Zip View Function

This function will begin a ZIP View operation.

**See Also:**

[View Options](#)

## Select All Function

This function will select ALL files/dirs in the current Source window.

### **See Also:**

UnSelect All

Select By Patter

## UnSelect All Function

This will de-select ALL files/dirs in the current Source window.

### **See Also:**

Select All

Select By Patter

## UnSelect By Pattern Function

This will allow you to select a group of files based on a partial file name in the Source window.

### **See Also:**

UnSelect All

Select All

## Play .WAV Function

This function will begin playing all the selected .WAV files in the current Source window (if you have a sound card).

## Size Directory Function

This function will determine the total size of all files in all sub-directories inside of each currently selected directory in the Source window.

The total size in bytes will be displayed to the immediate right of the directory name like the display for a file.



## Print Directory Function

This function will print the contents of the current Source directory.

## Expand Branch Function

This function will expand the currently selected tree level and all sub-directories.

## Collapse Branch Function

This function will collapse the currently selected tree level.

## USave Configuration Function

This function will save your current configuration, including all window locations and sizes.

## Program Settings Function

This function will invoke the Program Setting Dialog.

## Zip Options Function

This function will invoke the Zip General Options Dialog.

## Zip View Options Function

This function will invoke the [Zip View Options Dialog](#).

## Zip Backup Options Function

This function will invoke the [Zip Backup Options Dialog](#).



## UnZip Options Function

This function will invoke the UnZip Options Dialog.

## Configure File Types Function

This function will invoke the [File Types Config Editor](#).

## Sound Options Function

This function will invoke the Sound Options Dialog.

## Font Options Function

This function will invoke the Font Settings Dialog.

## Toggle Tree Mode Function

This function will switch File Plus between Tree mode and Normal mode.

## Find File Function

This function will invoke the Find File Dialog.

## Toggle Show Dirs Function

his function will toggle File Plus in and out of "Show Dirs in Tree Mode".

## Smart Execute Function

When this function is selected, File Plus will allow Windows to decide if the selected file is a DOS application or a Windows program and launch it appropriately.



## Print Text File Function

This function will print all the selected files in the Source window as text files.

## Paint Buttons Function

This function will invoke the Paint Buttons Dialog.

## Copy Button Function

This function will place File Plus in Copy Buttons mode.

## Button Exchange Function

This function will place File Plus in Button Exchange mode.

## Exchanging Buttons

This function allows you to swap one Path button or one User button for another. Colors and all data contained in the buttons will be exchanged.

## Copying Buttons

This function allows you to copy one Path button or one User button to another. Colors and all data contained in the button will be copied.

All data and colors in the destination button will be lost in favor of the new one.

## User Function Example 1

Example 1:

You want to make a button that will bring up the Program Settings dialog.

- (1) - Click on the Configure Buttons Tool Icon button in the or select the menu item "Configure Buttons" in the Configure Menu.
- (2) - File Plus should now say "In Configure Mode" in the window title bar.
- (3) - Select the button you want to configure with either your LEFT or RIGHT mouse button depending on how you want to activate it.
- (4) - The configure button requester should now appear.
  - (4A) - The Configure Button requester consists of 5 distinct sections:
    - (1) - Function Class
      - Use this lister to scroll through the possible function types.
      - In this case you want to select the "Program Settings" function.
    - (2) - User Modifiers: Note that this field is disabled currently.
    - (3) - Button Text
      - This is the actual text that will appear in the button.
      - Put whatever you like here (up to 10 characters).
    - (4) - Sound Effect
      - The path and name of a .WAV file can be used here to cause File Plus to play that sound whenever you hit the button.
      - (NOTE: This sound effect overrides any DEFAULT sound effect already in the Sound Options setup).
      - Use the "Find It" button to bring up a file requester that allows you to find the sound effect you want.
    - (5) - User Function Data
      - This field is also currently disabled.
- (5) - After you've entered all the data you want in the requester hit the "OK" button and the requester will disappear.
- (6) - Click again on the Configure Button Tool Icon Configure Button Menu item to return File Plus to its normal state.
- (7) - You're done! You can now click on the button to bring up the Program Settings requester. If you want to make this a permanent change, then select Menu--Configure--Save Configuration.

**See Also:**

User Example 2

## User Function Example 2

Example 2:

You want to make a button that you can use to run a hex editor on any file. You have a program called HEXEDIT.EXE that's on your hard disk somewhere, and what you would type in from DOS is something like this: "HEXEDIT DATA.BIN". This would invoke hexedit to load and edit the file DATA.BIN.

- (1) - Click on the Configure Buttons Tool Icon button in the or select the menu item "Configure Buttons" in the Configure Menu.
- (2) - File Plus should now say "In Configure Mode" in the window title bar.
- (3) - Select the button you want to configure with either your LEFT or RIGHT mouse button depending on how you want to activate it.
- (4) - The configure button requester should now appear.
  - (4A) - The Configure Button requester still consists of 5 distinct sections:
    - (1) - Function Class  
Use this lister to scroll through the possible function types. In this case you want to select the "User Function" function.
    - (2) - User Modifiers:  
This set of fields will now be selectable.
    - (3) - Button Text  
This is the actual text that will appear in the button.  
Put whatever you like here (up to 10 characters).
    - (4) - Sound Effect  
The path and name of a .WAV file can be used here to cause File Plus to play that sound whenever you hit the button.  
(NOTE: This sound effect overrides any DEFAULT sound effect already in the Sound Options setup).  
Use the "Find It" button to bring up a file requester that allows you to find the sound effect you want.
    - (5) - User Function Data  
This is where the really interesting stuff happens.  
Put in this field: "HEXEDIT %f"
- (5) - After you've entered all the data you want in the requester hit the "OK" button and the requester will disappear.
- (6) - Click again on the CONF button or select the Configure Button Menu item to return File Plus to its normal state.
- (7) - You're done! Select a file in one of your directory windows and click on your new button. The hex editor should now run and load up the file you selected.

**See Also:**

[User Function Example 1](#)





## Button Painting Dialog

This dialog allows you to paint All of the following items on File Plus's display:

- Path Buttons.
- User Function Buttons (Use the 1-4 buttons to change banks too).
- The Source and Target bars.
- The Selected and Unselected colors of your tree and file windows.

Most of your operations take place on the color window. From here you use your left mouse button to select a color as the foreground, and use the right mouse button to select a color as the background. The EXAMPLE button will show how your currently selected choices will appear.

After selecting the foreground and background colors, you may then select any Path or User button, or any of the other above mentioned items on File Plus's main display, and change their color just by clicking them.

To change one of your custom colors just select the "EDIT" button and you will be presented with your system palette from which you can customize that color entry.



## Program Settings Dialog

This dialog allows you to set some of File Plus's common settings.

- [Directory Scan Filter](#)
- [Copy/Move Mode Control](#)
- [Delete Requester Control](#)
- [Copy/Move Archive Bit Control](#)

## Copy/Move Archive Bit Control

These settings affect what File Plus will do about the Archive bit on each file it moves or copies.

- Clear Archive Bit
- Set Archive Bit
- Ignore Archive Bit

## Clear Archive Bit'

File Plus will turn off the "A", Archive bit for each file it moves or copies.

## Set Archive Bit'

File Plus will turn on the "A", Archive bit for each file it moves or copies.

## Ignore Archive Bit'

File Plus will ignore the "A", Archive bit for each file it moves or copies.



## Delete Requester Control

These settings affect what File Plus will do when you select the Delete function.

- Request Before Starting Delete
- No Request Before Starting Delete

## Request Before Starting Delete

File Plus will inform you of how many files and directories you have selected in the Source directory, and give you one last chance to back out before commencing the Delete process.

## No Request Before Starting Delete

File Plus will immediatly begin deleteing files and/or directories.

## Copy/Move Mode Control

This is where you decide what File Plus will do when it finds the same file or directory in your Target directory that it is copying from the Source directory.'

- Always Replace
- Never Replace
- Replace Only Older Files
- Ask Before Replacing

## **Ask Before Replacing'**

File Plus will ALWAYS ask you for confirmation before replacing any duplicate files it comes across.

## **Always Replace'**

File Plus will always replace any file it comes across, without informing you.

## Never Replace'

File Plus will never replace any duplicate files, it will just skip that file and proceed to the next one.

## Replace Only Older Files

File Plus replace only files in the Target directory that have dates and times older than the ones in the Source directory.



## Directory Scan Filter

This is where you set how File Plus will weed out files you may not want to see or accidentally mess with.'

For Example: You may want to always keep Hidden and System unchecked, by allowing File Plus to present these files to you, you are presenting yourself with the capability of modifying or deleting them.

Advanced users may want to turn all these boxes on.

### **NOTE:**

Always keep the Read-Only box turned on, or you won't be able to see files on CD-ROMS or other Read-Only storage media.



## Font Configuration

### **NOTE:**

The SHAREWARE version of File Plus will not allow you to use your own custom fonts or font sizes. If you would like this feature then **REGISTER!**

You can customize ALL the display features for File Plus:

- **Left File Window**
- **Left Tree Window**
- **Right File Window**
- **Right Tree Window**
- **Left Drive and Status Bars**
- **Right Drive and Status Bars**
- **Path/Directory Buttons**
- **User Function Buttons**

You can modify the font size or face for each of the above settings by selecting the one you want and then clicking "Select Font".



## Sound Configuration

This dialog is where you customize the Default sounds for each of File Plus's functions.

To assign a sound to a function, just select the function title then hit "Assign Sound".

To clear a sound, select the function title then hit "Clear Sound".



# Customizing File Types

## Overview of File Types

The File Types dialog is very similar to the User Function Dialog:

- Function Class
- User Function Modifiers
- Extension
- Sound Effect
- Hotkey
- User Function Data

## Extension

This is where you put in the File Extension you want File Plus to key on.

**EXAMPLE:**

.TXT, .DOC, etc....



## Overview of the File Types System

### NOTE:

The shareware version of File Plus will not allow you to create or make permanent changes to File Types. If you would like to take advantage of this feature then please [REGISTER](#).

Simplistic File Typing is one of the many advantages of File Plus.

File Typing simply means this: Whenever you double-click a file in any of File Plus's directory windows, File Plus will check the extension of the file, then consult its database of extensions to find a match. If it finds a match it will perform a function similar to a user configurable button. To get an example of how file types are created and edited, bring up the File Plus File Types Configuration requester (select Menu--Configure--Configure File Types, or hit the "Configure File Types Tool Icon).

Browse through some of the default file types to see how they work.

For an example, let's create a file type to run WORD for windows every time you double click on a .RTF (Rich Text Format Document). Let's also say that WORD is installed on your system in the following directory:

**"C:\WINDOWS\WINWORD".**

- (1) - First, select Configure File Types from the Configure menu.
- (2) - When the requester appears click on the "New Type" button.
- (3) - A small requester asking you for a description will appear. This is info you might use to remind you of what the type does. For this example, put something like: "Edit RTF file in WORD for Windows". Hit "OK" or press enter to proceed to the next section.
- (4) - Now you are looking at a requester that is ALMOST identical to the user button requester. The only difference is the missing "Button Text" field. This field has been replaced by an "Extension" field. Put in this field the extension you want File Plus to make a match with.
- (5) - Select "Windows Func" in the User Function Modifiers field, because you already know that WORD is a Windows program.
- (6) - In the User Function Data field put the following: "C:\WINDOWS\WINWORD\WINWORD %f"
- (7) - Everything else here is identical to configuring a user button.

Now find a .RTF file and double-click it!



## Hotkeys

Each of the 192 user buttons can have a unique hotkey assigned that will activate that function.

For example, the Delete function can have the 'DEL' key assigned to it, so pressing the DEL key on the keyboard will have the same effect as pressing your DELETE button.

To assign a hotkey, edit the button you want a hotkey for, then hit the the 'DEFINE' button in the Hotkey field of the button dialog. A small representation of your keyboard will appear. Select the key value and any other settings, like SHIFT or ALT.



## Filters

You can have up to 256 user-defined directory filters.

Just select the custom filter you want, hit EDIT and fill in the fields.



## Zip Backup Options Dialog

This dialog gives you options controlling how destination disks will be affected during a backup operation.

### See Also:

[Zip General](#)

## Zip View Options Dialog

This dialog allows you to setup how to view .ZIP files.

**NOTE:**

By using the internal viewer, you cannot currently change any of the sorting and display modes.



## UnZip Options Dialog

The UnZip Options Dialog allows you to setup the way files will be un-compressed.

Most of the entries in this dialog are similar to the ones in the Zip General Options Dialog.

## Zip General Options Dialog

The ZIP General Options dialog consists of the following fields:

- File Addition
- Compression Mode
- Recursive SubDirs
- Comment Control
- Miscellaneous Controls
- Password Settings
- Memory Control
- Listfile

## Zip Listfile

This setting allows you to specify a listfile.

See the PkZip documentation for more info.

## Memory Control

These settings determines what memory types will be used.

See the PkZip documentation for more info.

## Password Settings

These settings allow your .ZIP files to be encrypted with passwords.

See the PkZip documentation for more info.

## Miscellaneous Controls

These settings affect such things as Temporary Drive, Authenticity Verification, etc....

See the PkZip documentation for more info.

## Comment Control

These settings allow you to control comments placed in .ZIP files.

See the PkZip documentation for more info.

## Recursive Sub-Directories

This setting determines how directories will be compressed.

See the PkZip documentation for more info.



## Compression Mode

This setting determines how tightly your zip files will be compressed.

See the PkZip documentation for more info.

## File Addition

These options determine the basic file addition functions that can be performed when zipping files. See the PkZip documentation for more info.



# File Plus

Overview

General Notes

Disclaimer

Author Contact Info

Registration Info

Requirements

## Main Display

Tree Mode

Normal Mode

## File Functions

Copy Copy As

Clone

Make Directory

Find File(s)

Attributes

Move Move As

Rename

Delete

Search File(s)

## Customizing File Plus

Button Configuration

Program Settings

Sound Options

Hotkeys

Button Painting

Customizing Fonts

File Types

Filters

## Zip Options

General Options

Unzip Options

View Options

Backup Options

### Contacting The Author

If you have any bugs or suggestions regarding File Plus, please contact me at the following e-mail address.

[cmoore@wazoo.com](mailto:cmoore@wazoo.com)

Hopefully very soon I will have a website up at [wazoo.com](http://wazoo.com) that will give my users quick and painless access to new versions and tech-support on File Plus.

## Welcome to File Plus 1.8!

This program is a result of my ultimate disgust with every disk and file manipulation program I've encountered since I started using PC compatibles.

This program is an attempt to bring to the world of PC's an elegant and unbelievably simple user interface to do anything you want.

### Basic file and directory functions:

<u>Copy</u>	<u>Copy As</u>	<u>Move</u>	<u>Move As</u>
<u>Clone</u>		<u>Rename</u>	
<u>Make Directory</u>		<u>Delete</u>	
<u>Find File(s)</u>		<u>Search File(s)</u>	
<u>Attributes</u>			

File Plus provides the most comprehensible and simplest interface to working with .ZIP files as well. With one click of a button you can unzip any .ZIP file to any directory of your choice. Likewise you can zip up whole files and directories, as well as take advantage of the useful multi-volume backup functions of pkzip.

Multimedia sound support for PC's with sound cards supported under Windows. Virtually every function in File Plus can have a .WAV file sound associated with it.

A simple to use File Typing system.

A flexible user button definition system for creating custom commands.

## Minimum Requirements for File Plus

- File Plus requires Microsoft Win95 or Windows Ver 3.1.
- A 486 or better processor.
- 4 Meg of ram or virtual memory (8 or better is recommended).
- A mouse. (Virtually impossible to use with a keyboard alone)((Don't even try it))!

The author of this software (Carl W. Moore) assumes no responsibility for any damage to your files or hard disks, or any other storage media you may damage by using this software.

This program has been in testing and development for over a year, and so far no computers have suddenly leapt out the window as a result of this software :).





This program provides the easiest user interface to date to manipulate almost all aspects of day-to-day management of files and directories.

As a result, it's also EXTREMELY easy to point-and-click thousands of files and directories into oblivion if you don't pay attention to the built in safeties.

As a general rule, all functions in File Plus that can cause files and directories to be deleted or moved, will ask you for verification first. For advanced users, these safeties can be turned off.

## Source Window

Your Source window is the window that is currently showing <SRC> in the drive status bar.'

The Source and Target windows are constantly changing, each time you click the left or the right mouse button in any window, it will become the Source and the other window will become the Target.'

## Target Window

Your Target window is the window that is currently showing <TGT> in the drive status bar.'

The Source and Target windows are constantly changing, each time you click the left or the right mouse button in any window, it will become the Source and the other window will become the Target.'

## Registration Info

- Payment for File Plus is \$30.00 U.S.
- Payment must be made by check or money order drawn on a U.S. bank.
- All payments must be made payable to: Carl W. Moore
- Mail the order form to:  
Carl W. Moore  
P.O. Box 712  
Holloman AFB, NM 88330
- File Plus will be sent on a 3.5" HD unless other formats are required.
- The author (Carl Moore) can be reached by e-mail at the following: [cmoore@wazoo.com](mailto:cmoore@wazoo.com)
- All Tech Support questions can be left here.

**See or print the "REGISTER.DOC" file for easy registration.**



## SEARCHING FILES

File Plus provides a very simple and extremely fast means of searching all the devices on your system or network for a string or hex value inside a file.

The Search Files function consists of two dialogs for entering your search criteria.' '

- Search Parameters Dialog
- Drive Criteria Dialog

## Drive Criteria Dialog

The Drive Search Criteria dialog presents you with the following options for narrowing down your search criteria:

- Search Only Selected Files/Dirs
- Search All Fixed Devices
- Search All Remote Devices
- Search All CD-ROM Devices
- Search All Removable Devices'

## Search Only Selected Files/Dirs

Leaving this button checked can have two different results:

If no files or directories in the Source window are selected, then File Plus will search ALL files and directories in the current Source window, else File Plus will search ONLY the selected files/dirs.



## File Search Parameters Dialog

The Search Parameters Dialog consists of the following fields:

- Search For: Text String or Hexadecimal Value.
- Options: Match Case and Results To File.
- String or Hex Value Field.

## Results To File

Check this button if you want File Plus to output the results of its search to a file.

You'll find the file in File Plus's home directory, called RESULTS.TXT.

### Match Case Checkbox

Check this button if you want File Plus to make a literal case-sensitive search.

#### **Note:**

This button only affects text searches not hex.

### Text String

Setting this radio button informs File Plus that you would like it to treat the value in the String or Hex Value Field as a literal string.

## Hex Value

Setting this radio button informs File Plus that you would like it to treat the value in the String or Hex Value Field as a set of consecutive hex values, you need to separate each entry with spaces (leading zeroes are NOT required).

### Example:

A0 EA 01 etc....

### String or Hex Value

Enter the value, either a literal string or a series of hexadecimal numbers in this field.



