

# Typo Edges Graphic

Cool Special Effects  
For Designers

# Give Your Designs An Extra Edge



Your Clipart will never be the same again!



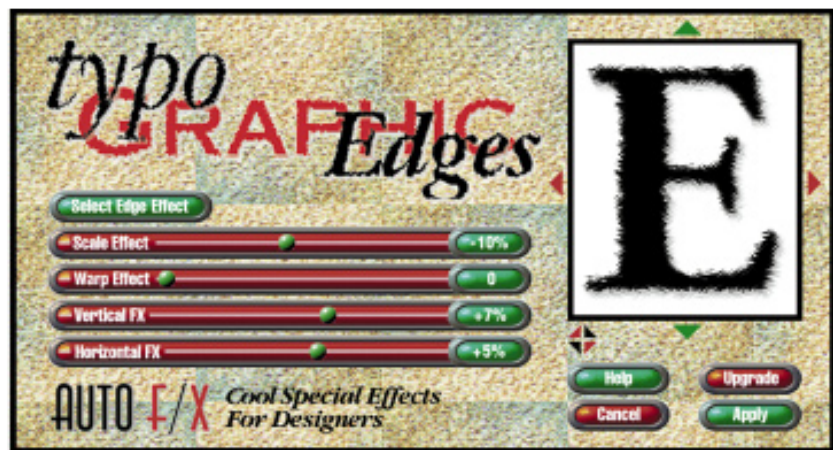
Putting a new look on type or graphics can be tough. Making something look distinctive can take time most designers don't have. Typo/Graphic Edges is a cool plug-in that can weather and roughen your logos, clip art or type for a custom look and feel.

Typo/Graphic Edges lets you control the edge effect size, horizontal and vertical effect amounts, warp, orientation and the style of any effect. A dynamic preview with a pan and zoom feature help you rapidly get just the right look or feel before you apply the effect.

With thousands of different of edge effect options at your fingertips you'll find yourself able to create spectacular results in no time. Typo/Graphic Edges works with any rasterized type regardless of the font style or maker, and works great on any clip art or illustration file\* (including Illustrator and Freehand).

Supports Photoshop 3.0 or higher, PhotoDeluxe 1.0+, PageMaker 6.0 & 6.5, Illustrator 6.0+, Photopaint 6.0 or higher, Fractal Design Painter 4.0.3+, Canvas 5.0+, Freehand 7.0, Paintshop Pro plus any other application which fully supports Photoshop 3.0 plug-ins. Fully compatible with Win95/NT, Macintosh System 7.x, 68k and Power Macintosh.

\*Typo/Graphic Edges does not edge photographs - use Auto F/X Photo/Graphic Edges for this effect.



The easy to use interface only takes moments to learn and gives you complete control over the entire effect. Apply cool edge effects right in your favorite layout, illustration or image editing application. It's fast, easy and offers an almost limitless supply of creative options.

# Headline

Adding edge effects to type has never been easier or more fun. Typo/Graphic Edges is a product you will find yourself using all the time - but be careful - it is highly addictive!

**AUTO F/X**  
<http://www.autofx.com>

# Sample Edge Effects Included With This Software



**AF043.AFX**



**AF073.AFX**



**AF122.AFX**



**AF253.AFX**

# Table Of Contents

## Install Instructions

Typo/Graphic Edges 3.0 works as a Photoshop 3.0 or 4.0 compatible plug-in and supports all applications that follow these standards.

**Memory Requirements:** Windows: Typo/Graphic Edges gets its memory both from RAM and Virtual memory from your startup system hard drive. Typo/Graphic Edges may require scratch disk space while working with images so make sure you have extra hard disk space available on your startup drive before applying an effect. Usually no more than 10MB is required. Macintosh: Typo/Graphic Edges gets its memory only from RAM. Making at least 6MB of memory available outside your host application gives you the best performance. Usually no more than 6MB of RAM is needed.

**Choose the Application:** To install Typo/Graphic Edges, you must first decide which image editing, page layout, or illustration application will host the plug-in. The application must support the minimum Photoshop 3.0 SDK standard for plug-in filters. See the host application manual or call their tech support if you are not sure if it supports this standard.

**To Install Typo/Graphic Edges:** We have optimized this plug-in for Macintosh and Windows systems so you can get maximum speed and performance. The install program automatically detects your hardware type and operating system and installs the appropriate version of the plug-in on your system. Before you begin the installation process quit all running applications.

- On a Macintosh, double-click on the install file to begin the installation.
- On Windows 95/NT double click on the Setup.exe icon to begin the installation.

Select the appropriate folder or directory for your application's Photoshop compatible plug-ins. Follow the onscreen instructions to complete the installation. Typo/Graphic Edges should appear in the menu where Photoshop plug-ins reside. Depending on the host application you are using you may have to identify the folder or directory where the plug-in resides. Consult the host application's manual or call their tech support if you need further assistance in determining where Photoshop plug-ins go and how to access them.

## Visit Our Website: <http://www.autofx.com>

The Auto F/X website has tips on using this software, designer resources, beta tests on new versions and software, updates, special promotions and links to lots of cool sites.  
Come visit us today and see for yourself!

Typo/Graphic Edges™, Photo/Graphic Edges™, Page/Edges™ and The Ultimate Texture Collection™ are trademarks of Auto F/X™ Corporation. QuarkXPress is a trademark of Quark, Inc. Photoshop, PhotoDeluxe, PageMaker are trademarks of Adobe Systems, Inc. Photo-Paint is the trademark of Corel Corporation. Any other products mentioned in this literature are trademarked by their respective owners. Imaging Format Technology © 1996 AccuSoft Corporation. This manual, software, software interface and edge effects are copyrighted © 1994 - 1997 Auto F/X™ Corporation. All Rights Reserved Worldwide.

United States Patents Pending

## Quick Start

(for people who hate to read manuals)  
The Basics / How to Quickly Create An Effect  
Adjusting Settings to Create Unique Edge Effects  
Pages 1-3

## Typo/Graphic Edges Modifier Key Chart

Button and Slider Controls Modifiers  
Page 3

## Trouble Shooting

Types of Programs Supported  
Accessing the Plug-in  
Removing The White Fringe Around an Edge  
Target Image Color & File Type Support  
Out of Memory Alerts  
No Edge Effect Is Showing in the Preview  
Problems Outputting Edged Files  
Page 4

## Auto F/X Corporation

HCR-73, Box 689  
Alton Bay, NH 03810

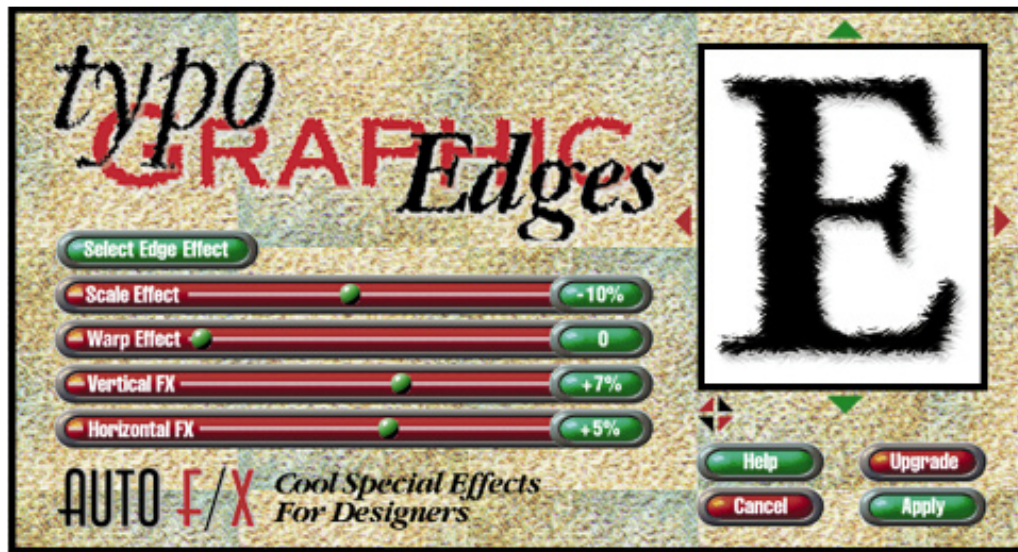
**603.569.8800**

Technical Support is Reserved  
for Registered Users Only



# Quick Start

No one likes reading a manual - so use these quick start pages to get up and running fast!



## The Basics

Typo/Graphic Edges (TGE) works as a plug-in. Your application must support Photoshop 3.0 or 4.0 plug-ins for it to work. In an image editing program you must open the artwork you desire to edge and can either have part of the image selected or can apply the effect to the entire piece of artwork. In a layout or illustration program you must have placed the bitmapped artwork (TGE cannot edge Illustrator or Freehand eps files) and have the picture box selected for the plug-in to be available in the plug-ins menu.

When you choose an effect from our Catalog of Effects and use the TGE plug-in to apply the edge shape to your artwork you should note that the examples created in the Catalog of Effects were generated on a 300 PPI CMYK file with no Scale or Warp settings applied. An equal Horizontal and Vertical FX setting was used in generating the examples. The Catalog of Effects is meant to help you determine the general look of the edge effect. Scaling and Warping or working on lower/higher resolutions than 300 PPI when applying the effect will alter the way the edge looks on your artwork as compared to the Catalog of Effects examples.

## How to Quickly Create an Effect

Typo/Graphic Edges can edge just about anything. It works best on type, clip art and solid objects. It was not designed to be used to edge photographs as it will distort the image pixels versus masking just the outer edges like Auto F/X's Photo/Graphic Edges™ does.

The first thing you will want to do to apply an edge effect to your bitmapped artwork is to access our plug-in from the host application's plug-in menu (see your host application's manual for instructions how to access Photoshop 3.0 plug-ins). Once the plug-in interface is onscreen click on the Select Edge Effect button and choose an edge from the demo edges installed into the Auto F/X > TGE > Edges folder/directory in the plug-ins folder of the host application. Now that you have an edge effect chosen you will want to apply either a Vertical or Horizontal FX setting and the results will show up in the preview window. Note: Holding down the Option (Mac) or Alt (PC) while clicking on Select Edge Effect removes the effect and resets the slider controls to the default setting.



**Applying Vertical FX.** After you have chosen an edge effect you can apply the edge in a vertical direction by using the Vertical FX slider. A positive setting (moving the slider button to the right) will make the edges go from the top toward the bottom and a negative setting (moving the slider button to the left) makes the edges go from the bottom toward the top. You should start out with a lower setting then increase the setting as necessary to achieve the desired look. Higher settings typically distort the artwork.



**Applying Horizontal FX.** After you have chosen an edge effect you can apply the edge in a horizontal direction by using the Horizontal FX slider. A positive setting (moving the slider button to the right) will make the edges go from the left toward the right and a negative setting (moving the slider button to the left) makes the edges go from the right toward the left. You should start out with a lower setting then increase the setting as necessary to achieve the desired look. Higher settings typically distort the artwork.



Original Image



**Warping an Edge.** After you have chosen an edge effect and have set a Vertical or Horizontal FX you can Warp the effect by using the Warp Effect slider. Warping distorts the edge effect and changes the look of the edge treatment. The effect varies from edge to edge. The more dramatic results are achieved with low to medium settings - usually from 2 - 5. Higher settings of 7-10 do not always yield a warped effect - depending on the edge that is selected.



**Scaling an Edge.** After you have chosen an edge effect and have set a Vertical or Horizontal FX you can Scale the effect by using the Scale Effect slider. Scaling makes the edge either larger or smaller, depending on the settings on the slider. The settings range from -100% to +100%. When you scale an edge you will notice that the edged pattern applied to your artwork gets larger or smaller with the scale settings you choose.

### **Adjusting Settings To Create Unique Edge Effects**

There are millions of possible variations you can create using the different control settings. You can also apply an effect once then run the filter over the artwork again with a different effect for virtually unlimited combinations! When you are selecting an edge keep in mind that the edge warp makes the base shape of the effect rougher in style, the scale sliders make the edge effect apply in larger or smaller increments and the flip/rotate buttons shift the edge effect details around on the artwork.



Horizontal FX -10  
Vertical FX +10



Horizontal FX Applied +15  
Vertical FX Setting 0



Vertical FX Applied +15  
Horizontal FX Setting 0



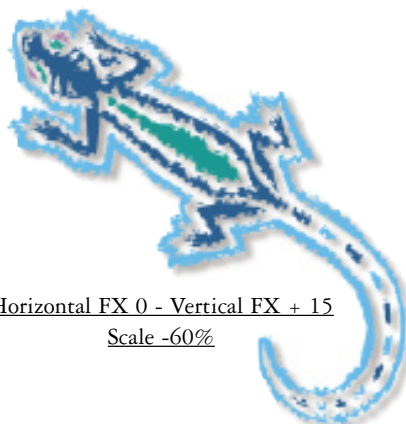
Horizontal & Vertical FX  
Applied +7



Original Image



Horizontal & Vertical FX +20  
Warp Effect 2



Horizontal FX 0 - Vertical FX +15  
Scale -60%



Edge Applied To Just Light Blue  
Areas of Artwork



# Quick Start



Edge Effect Edged

Horizontal 3

Vertical 3



Edge Effect Rotated

Rotating, Flipping and Scaling creates a slight variation on how the edge is applied.



Edge Effect Flipped

**How Can I Slightly Vary an Edge Effect?** Try rotating the orientation of the edge effect by clicking on the Rotate button at the bottom left side of the preview window. This will make the edge effect pattern apply slightly different. This helps when you want to select different pieces of type and apply the same look with a variation on how the edge is applied.



To vary the edge look even further you can also flip the edge effect around to get just the right edged orientation. Flip buttons are located on all four sides of the preview window.

## BUTTON & SLIDER CONTROLS



### Select Edge Effect

No modifier keys pressed  
Option (Mac) or Alt (PC)

Allows you to select an edge effect to be applied to the artwork  
Removes the edge effect and resets the default slider controls

### Scale Effect

No modifier keys pressed  
Option (Mac) or Alt (PC)  
Cmd (Mac) or Ctrl (PC)

Scales the edge effect from -100% to +100%  
Scales the edge effect in a vertical direction only  
Scales the edge effect in a horizontal direction only



### Warp Effect

No modifier keys pressed

Distorts the edge effect producing varied results



### Vertical FX

No modifier keys pressed

Settings are from -50% to +50%.  
Negative settings make the edges go from the bottom to the top  
Positive settings make the edges go from the the top to the bottom  
Zero produces no vertical effect



### Horizontal FX

No modifier keys pressed

Settings are from -50% to +50%.  
Negative settings make the edges go from the right to the left  
Positive settings make the edges go from the the left to the right  
Zero produces no horizontal effect



### Rotate Button

No modifier keys pressed

Rotates the edge yielding a slightly varied look to the effect



### Flip Buttons

No modifier keys pressed

Flips the Outset and the Inset edges in the opposite direction



### Zoom Tool

No keys  
Option (Mac) or Alt (PC)  
Cmd (Mac) Ctrl (PC)

Zooms in closer to the area over which it is clicked  
Zooms back from the area over which it is clicked  
Zooms all the way back to a full preview sized window



### Pan Tool

Space Bar

When zoomed in on the preview hold down the space bar for panning. Lift the space bar and the preview redraws.



# Trouble Shooting

## Types of Programs Supported

Typo/Graphic Edges works with any host application which fully supports the Adobe Photoshop 3.0 plug-ins SDK. Check with the host application manual or tech support to see if it supports Photoshop 3.0 or 4.0 plug-ins.

## Accessing The Plug-in

Typo/Graphic Edges can be accessed by any application that supports Photoshop 3.0 plug-ins. You must either place a copy of the Typo/Graphic Edges plug-in in the host applications' plug-ins folder before launching the application or set the host application's plug-ins preferences to the location where you have Typo/Graphic Edges installed on your computer. Each application has a different setup required for where you put the plug-ins. Refer to your host application's manual or tech support for more details.

## Removing The White Fringe Around An Edge

If you are trying to layer an edge effect over another image, color or gradient in a layout or illustration program you will notice that there will be a fringe of white around the edge effect due to the layout program's inability to properly mask out the white areas of the image. Refer to [Use Bitmap Edges to Overlay Graphics in Layout Programs](#) on page 6 of this manual or collage your artwork using transparent layers in an image editing application like Adobe Photoshop. You can attempt to create clipping paths around the edged artwork but need to be aware that they do not always work due to the complexity of the paths required to create the clipping around the edged artwork. See [Creating Clipping Paths Around Edged Effects](#) on page 5 for more details.

## Target Image Color & File Type Support

Typo/Graphic Edges can only be applied to CMYK, RGB & Grayscale images. If you are working with any other color mode (including duotone) change the file to an RGB image in your image editing application and apply the effect. Convert the file back to the original color mode after it has been edged. Typo/Graphic Edges will work with any file type supported by the host application including TIFF, EPS, JPEG, PICT, BMP and PCX files.

## Out of Memory Alerts

Windows 95 Users: The only time you should get an out-of-memory alert is when you are out of hard disk space. Typo/Graphic Edges always uses the startup system drive for scratch disk space. If you run out of scratch disk space you can either make room on the startup drive or restart from a larger hard drive. This should never happen as the edge files are very small in size.

Macintosh Users: Typo/Graphic Edges runs in RAM only and does not require hard drive space. If you run out of memory you should quit all other running applications and allocate less RAM to the host application. This frees up extra memory outside the host application for our software to use in processing the effect. You can change an application's RAM settings by clicking on the application icon and typing Command I. This will bring up an information window for the application where you set the preferred allocation of RAM. Usually no more than 6MB of RAM is needed outside the host application for optimal performance.

## No Edge Effect Is Showing In The Preview Window

You must first select an edge effect and set either the Horizontal and/or Vertical FX sliders to a higher setting before you will see an edge effect in the preview window. You may need to zoom in on the artwork to see more detail.

## Problems Outputting Edged Files

You should never encounter printing problems after using our software as it does not alter the file in any way other than to rearrange pixels in the image. Most printing problems are solved by opening and resaving a file as a different format (EPS, TIFF, etc...) or by updating printer drivers so they are current with updated system software or applications.

## Getting Technical Support

Tech support is reserved for registered users only - as this demo is free and is widely distributed in numerous countries we cannot offer technical support for it.