

Introducing *MetricFont*

What is it?

MetricFont is a freeware font for use in music printing applications using programs such as FINALE™, etc. It is free for all individuals, but must be distributed with this documentation and may not be distributed as part of any other offering or with any other fonts. © and all other rights of ownership remain the property of the author.

What does it do?

MetricFont will be useful to composers and copyists who require a quick dependable method of creating complex and/or irrational time signatures (usually) for modern classical music. Not everyone will need this font, but those who do will most certainly appreciate it.

What else?

I'm making this font available as a freeware font to promote my line of custom music fonts which are available as shareware on most networks. Demo versions of these fonts, *TempiFont* and *Thesisfont* are

available online, and contain an assortment of generally useful music symbols which all copyists and composers will find useful.

For the latest version of *MetricFont*, plus documentation and four other useful music fonts, plus FINALE bonuses send \$40(US) to:

Arun Konanur
Suite 224
2673 Broadway
NYC, NY
10025

be sure to look for demo versions of *TempiFont* and
Thesisfont online...

partial *MetricFont* docs. follow on the next
pageMetricFont

MetricFont is a freeware font designed to facilitate the setting of complex time signatures in FINALE. Although the uses for this font may be few and far between, those engravers and composers who habitually require compound and/or irrational meters will appreciate its convenience. 24pt. size is recommended, with a vertical offset of -90.

Time Signature Characters

The bulk of *MetricFont's* characters are time signature characters. *MetricFont* uses separate characters for the numerator (upper) and denominator (lower) halves of the time signature. Generally, the font uses shifted letters for the numerator and lower case letters for the denominator.

Numerator Characters (18pt. size is shown)

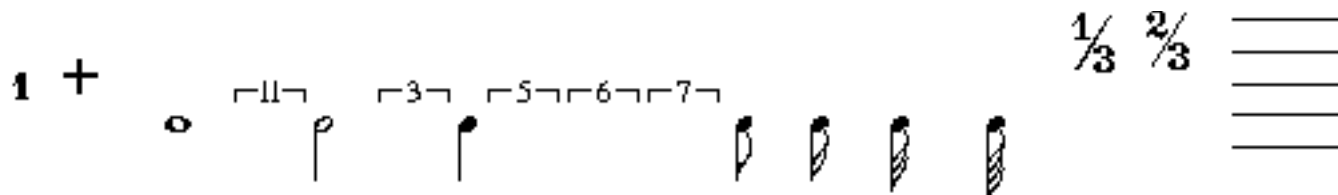
1 2 3 4 5 6 7 8 9 10 11 12 13 14 15 16 17 18 19 20 21 22 23 24 25 26 27 28 29

Denominator Characters

1 2 3 4 5 6 7 8 9 10 11 12 13 14 15 16 17 18 19 20 21 22 23 24 25 26 27 28 29

Supplementary Characters

The remainder of *MetricFont*'s characters are for use in setting complex meters. These characters are to be used in conjunction with the numerators and denominators to create additive and irrational meters. (48pt. is shown)



A second type of numerator "one" is included for use with the tuplet characters (**11 3 5 6 7**). Staff lines are included for instances where a time signature must be placed at the end of a system prior to a meter change at the beginning of the following system. When typing time signatures, always begin with the top of the time signature and proceed to the bottom. Staff lines always precede a typed time signature. Examples follow:

