

# EndNote Translator 1.0

Freeware by Francisco Valero

With the usual disclaimers and limitations

June 1993

I ask nothing other than you distribute the program in its original form together with this readme file. It would be nice to hear from you for feedback, and just to see if it was useful. Drop me a line at [valero@roses.stanford.edu](mailto:valero@roses.stanford.edu)

**Finally, an affordable option to import your On-Line reference searches into EndNote!**

## • Creating a references file

- Once you have found the references you need, **open** a photo (sometimes called log) file. Request your reference data base to display your search results using the NLM format (the National Library of Medicine standard tags). In medline this means, say,

**"d 1-5 med cont"**

Once you are saving references to a photo file, it is faster to display references continuously (hence the **"cont"**).

Your screen will look something like this :

```
med-> d 1 med long
Search request: F PA WILGENBUS #
Search result: 6 citations in the Medline database

Type HELP for other display options.

1
UI - 93252378
AU - Wilgenbus KK
AU - Milatovich A
AU - Francke U
AU - Furthmayr H
AD - Department of Pathology, Stanford University School of Medicine,
    California 94305.
TI - Molecular cloning, cDNA sequence, and chromosomal assignment of the human
    radixin gene and two dispersed pseudogenes.
TA - Genomics
DP - 1993 Apr
```

And it will go on forever.....

- Once you are done displaying your results, close the photo file.

- Using EndNote Translator 1.0:

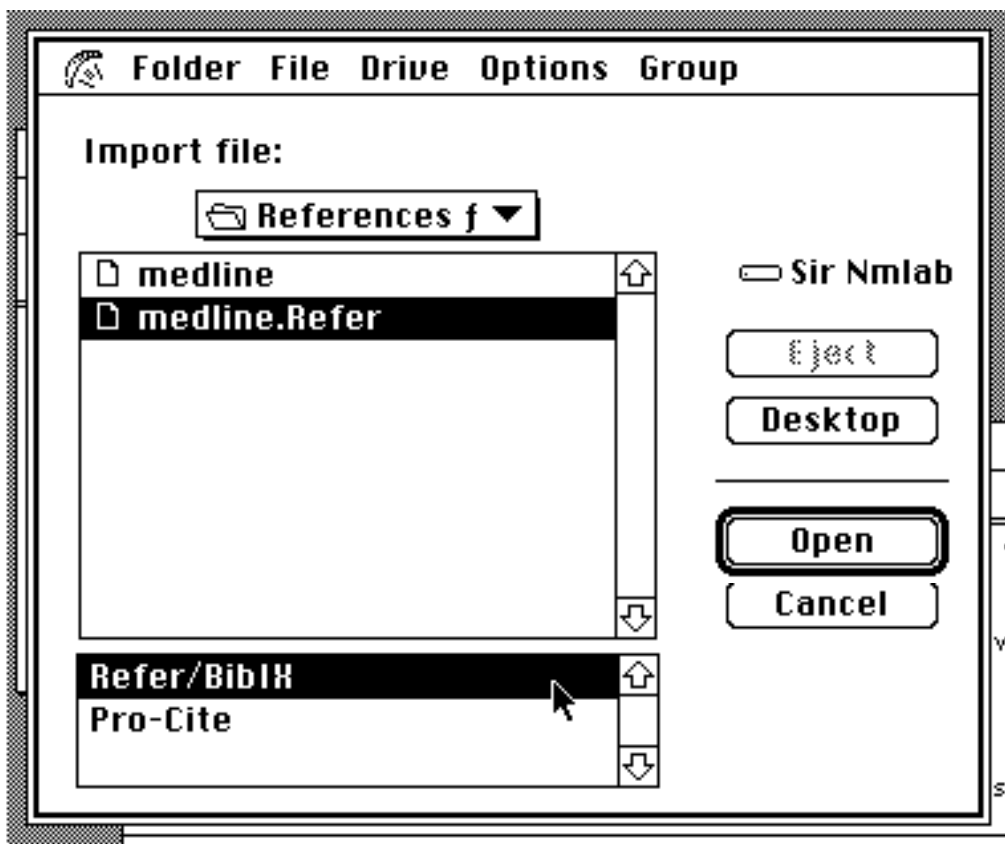


- Double-click **EndNote Translator 1.0** icon.
- Use the Open File Dialog to find and **open** your photo file.
- Watch as the number of translated references grows.

**EndNote Translator 1.0** will tell you if the translation was successful, or if any errors occurred. The name of the translated file will be **fname.Refer**.

- To import into EndNote

- Launch EndNote (or the EndNote plus module) and **Open** a new Reference Library File (always a good idea since you don't know successful any process will be).
- Choose **Import...** from the **File** menu. You will see a dialog like this one:



Find and select the **fname.Refer** file and the **Refer/BibIX** format. Click **Open**. Watch in wonder and amazement how hours of cutting and pasting are avoided.

Now...get back to your research!