



ACDSee *version 2.1*

©1994-1997 ACD Systems, Ltd.

Using ACDSee

[Introduction](#)

[Installation](#)

[Running ACDSee](#)

[Image Browser](#)

[Image Viewer](#)

ACDSee Registration and Licensing

[Registration](#)

[License and Distribution](#)

About ACDSee

[Version History \(What's new\)](#)

[Program Updates](#)

[Credits](#)

[Frequently Asked Questions](#)

About ACD Systems

[Contacting ACD Systems](#)

Introduction

Congratulations on obtaining ACDSee, the fastest, easiest-to-use image viewer for Windows 3.x available! (If you are using Windows NT or Windows 95, get ACDSee for Windows 95, the fastest, easiest-to-use image viewer for Windows NT and Windows 95!)

ACDSee is the only image viewer that gives you all these great features:

- attractive, effective and easy-to-use interface, including toolbars, status bars and on-line help
- support for most popular image formats: BMP, GIF, IFF, JPEG, PCX, PCD, SoftImage PIC, PNG, PSD, TGA, TIFF and WMF
- rapid JPEG decoding
- fast, full-colour image previews
- file system browser front end lets you quickly browse through your images and other files
- image display during decoding process
- selectable dithering modes for high quality output
- fast scrolling and zooming, even during decoding process
- innovative system for deleting, renaming, copying and moving files
- support for document launching, editing and printing via file associations
- powerful file association editor
- facility for viewing & editing 4DOS descriptions
- drag-and-drop support for single and multiple files
- automatic or manual slide show with optional read-ahead decoding
- always-on-top and full-screen viewing window options
- auto shrink or zoom image to fit screen options
- single and batch mode image printing with configuration options
- optional single-instance mode makes ACDSee the perfect viewer for use as a helper application
- set the desktop wallpaper

Image Formats Supported

BMP	Windows Bitmap	Windows and OS/2. 2/8/16/24/32 bpp. RLE and uncompressed. BI_BITFIELDS encoded not supported.
DCX	Multiple-page PCX	All sub-types and multiple pages supported.
GIF	Graphics Interchange Format	Single page and animated.
IFF	EA/Amiga Interchange File Format	1-24 bpp, including HAM and HAM8. Multiple pages and animations not supported.
JPEG	JPEG JFIF	JFIF and Adobe CMYK.
PCD	Kodak PhotoCD	512x768 and 768x512 resolutions.
PCX	ZSoft Publishers Paintbrush	All sub-types supported.
PIC	SoftImage PIC	All sub-types supported.
PNG	Portable Network Graphics	All sub-types supported.
PSD	Adobe PhotoShop Document	RGB, grayscale, duotone, paletted and bi-level. Lab colour and 16 bpc not supported.
TGA	Targa TGA	All sub-types supported.
TIFF	Tag Image File Format	1,8,24,32 bpp. Uncompressed, PackBits, LZW, CCITT Group 3 & 4, ZIP, NEXT, new JPEG. Support for multi-page documents.
WMF	Windows Metafile Format	Win 3.x embedded metafiles. (Enhanced metafiles not supported)

Installation

System Requirements

- * 386sx or higher processor
- * 256 colour or higher graphics card
- * 4 Megabytes RAM
- * Windows 3.1, Windows for Workgroups 3.1, Windows NT or Windows 95
- * ~1MB of disk space

Installation Procedure

Simply run the setup.exe installation software included.

Uninstallation Procedure

Double-click on the provided uninstall icon in Program Manager. Alternatively, run the unwise.exe program located in the installation folder and select the install.log file at the prompt.

Running ACDSee

Starting in Browser Mode

You can start ACDSee from the Program Manager by double-clicking on its icon. You will immediately be presented with the Image Browser dialog where you can browse your directories for images to look at.

Starting in View Mode

If you have made a File association between image files and ACDSee, you can also start ACDSee from the File Manager by just double clicking on an image file.

Note: When ACDSee is run in this manner, pressing Escape will exit the program, rather than take you to the Image Browser.

Command-Line Arguments

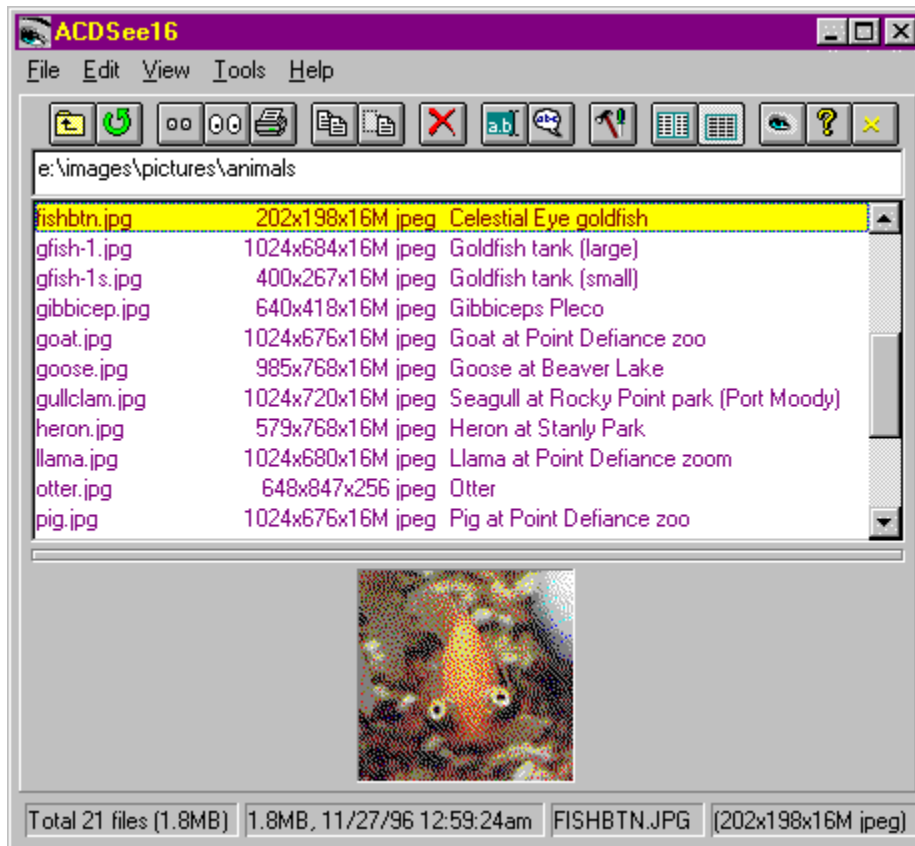
You can supply one or more image files as the command-line arguments to ACDSee. You can even use wildcards. e.g., the command **acdsee.exe *.jpg *.gif** would start ACDSee and have it slide show all the .JPG and .GIF files in the current directory. Files matching the wildcard pattern are sorted in alphabetical order.

You may alternatively specify a startup directory on the command line. The directory name must end in a "\", or be one of ".", "..", or "<drive>:". ACDSee will start the Image Browser in the specified directory.

View all mode

Normally, when you launch ACDSee to view a single image, only that image is loaded in the viewer. However, if the Show all images in directory browser option is turned on, then all image files in the directory containing the single image will be loaded (sorted by name) into the slide show sequence, and the single image will be made the currently viewed image. This allows you to for example launch an image from File Manager, and then use ACDSees forward/back buttons to view other images in the same directory.

Image Browser



Click on an area of the picture above to get help for that item, or select a topic below.

[Context menu](#)

[Selecting items](#)

[Changing what information is displayed](#)

[Changing the order in which files are displayed](#)

[Drag & Drop Feature](#)

[Browser Options](#)

[Shortcut Keys](#)

Context menu

A pop-up menu of commands will appear if you click on an item in the file list with the right mouse button.

Selecting items




You can change the currently selected entry by:

- * clicking on another entry with the mouse button
- * moving the selection bar with the cursor keys
- * pressing a lowercase letter, which will take you to the next entry starting with that letter
- * pressing an uppercase letter, which will take you to the previous entry starting with that letter

You can select several entries by:

- * clicking on one entry with the mouse and dragging down or up the list
- * holding down shift and moving the selection bar with the cursor keys or by clicking on another entry with the mouse
- * pressing Shift-F8 to enter Multiple Selection Mode.

Changing what information is displayed.

- * Click  for a brief, multi-column listing, or
- * Click  for a detailed, single-column listing.
- * Click either of these with the right mouse button to change which details are displayed.
- * You can also configure what information is displayed for each mode in the Options Window 

Changing the order in which files are displayed


- * Select View | Sort by from the menu, or
- * Right click on  or



Image Browser - Options

The screenshot shows the 'Image Browser Options' dialog box with a purple title bar. It is divided into several sections: 'Brief mode' and 'Detail mode' each with five checkboxes for 'Associated app.', 'File size', 'Time stamp', 'Image attributes', and 'Description'; 'Preview' with a checked 'Automatic' option, a 'Delay' of 50 ms, and dropdowns for 'Size' (Automatic) and 'Dither' (Ordered); 'File List Display' with checkboxes for 'Show image files only' and 'Show hidden files'; 'Read image headers' with a 'Never' dropdown and an unchecked 'Cache info in description files' checkbox; and 'Miscellaneous' with four checked options: 'Confirm file deletion', 'Set hidden attribute on description', 'Remember last directory', and 'Show tool tips'. A preview window shows 'Directories' in blue, 'Image files' in purple, and 'Associated files' in green, with 'Set Font...' and 'Set Colour...' buttons. At the bottom are buttons for 'Set File Associations...', 'Save options', 'OK', 'Cancel', and 'Help'.

Image Browser Options

Brief mode

- ☐ Associated app.
- ☐ File size
- ☐ Time stamp
- ☐ Image attributes
- ☐ Description

Detail mode

- ☐ Associated app.
- ☒ File size
- ☒ Time stamp
- ☒ Image attributes
- ☒ Description

Preview

- ☒ Automatic Delay: 50 ms
- Size: Automatic
- Dither: Ordered

File List Display

- ☐ Show image files only
- ☐ Show hidden files

Directories
Image files
Associated files

Set Font...
Set Colour...

Read image headers

- Never
- ☐ Cache info in description files

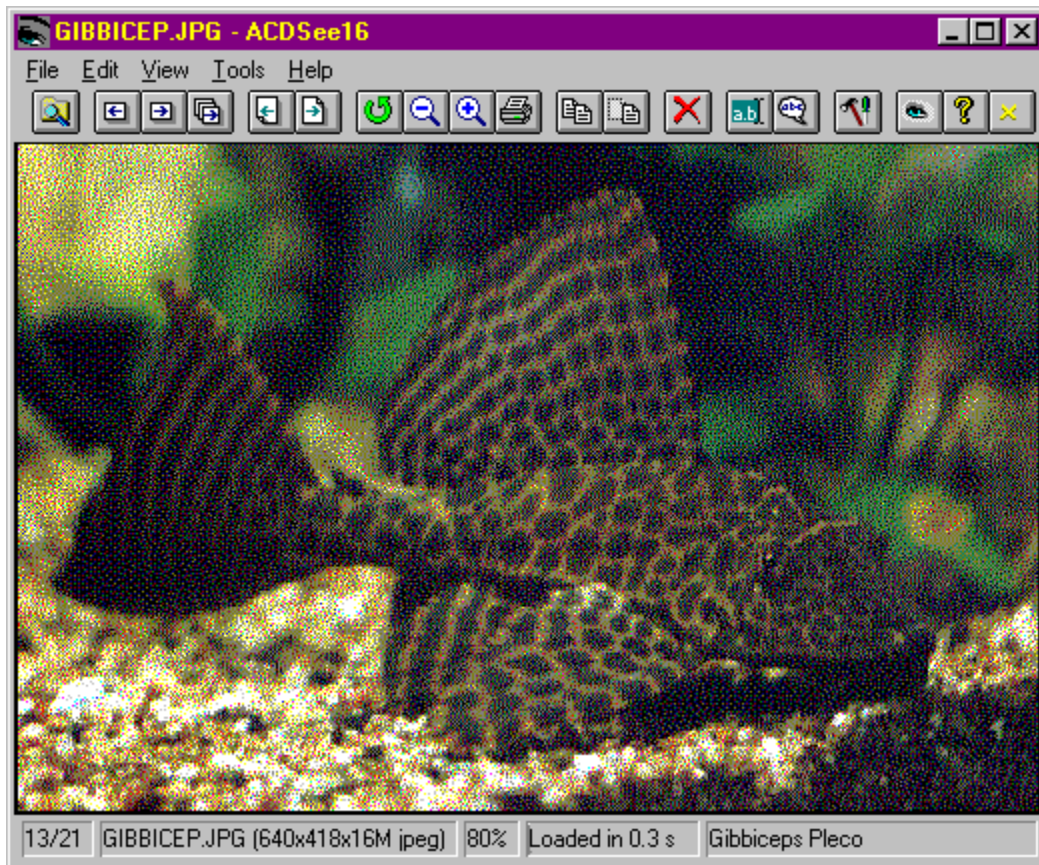
Miscellaneous

- ☒ Confirm file deletion
- ☒ Set hidden attribute on description
- ☒ Remember last directory
- ☒ Show tool tips

Set File Associations... Save options OK Cancel Help

Click on an area of the picture above to get help for that item.

Image Viewer



Click on an area of the picture above to get help for that item, or select a topic below.

[Drag & Drop Feature](#)

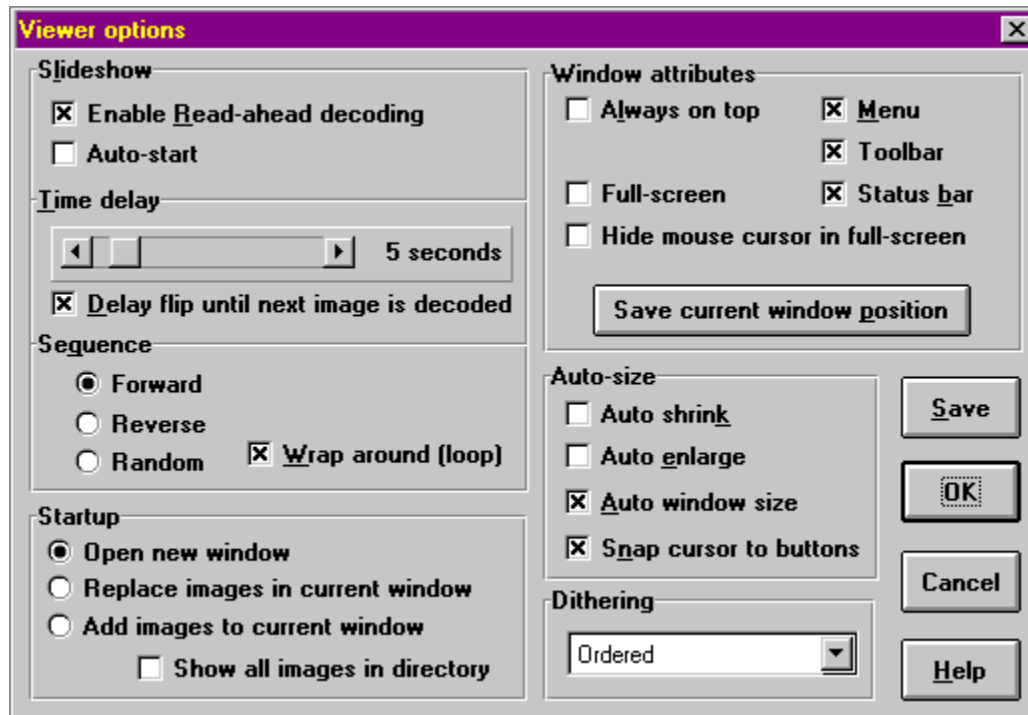
[Slide show Feature](#)

[Full screen mode](#)

[Viewer Options](#)

[Shortcut Keys](#)

Image Viewer - Options



Click on an area of the picture above to get help for that item.

Registration

Why Should I Register?

ACDSee is "ShareWare". This means that we have made the software available to you for free evaluation. You are entitled to evaluate the software for up to 30 days without obligation to pay.

Shareware (non-registered) ACDSee is a "full-featured" version. This means that the same capabilities available in the registered software are present in the non-registered software. This allows you to try out all the features in ACDSee to confirm that they work to your satisfaction. In fact, the non-registered software includes a bonus feature - the [shareware nag box](#). This is an added incentive for users to register the software rather than continue using indefinitely it without paying.

If you use ACDSee beyond the 30 days, you are obligated to register it. Registration entitles you free technical support and minor upgrades to the software. Registration may also entitle you to discounts on new software releases from ACD Systems. By registering the software, you provide us with the resources and incentive to support the software with updates and to develop additional quality shareware products in the future.

How Much Does It Cost To Register?

Registering ACDSee costs you only \$26 US. If you are part of a business and wish to use several copies of ACDSee within your company, greatly reduced [site licensing rates](#) are also available.

Upgrading From A Previous Version

Registered users of ACDSee version 1.3 or later are automatically registered for version 1.6. If you are a registered user of a version of ACDSee prior to 1.3 you can upgrade your registration to the new release for a discounted fee. See www.acdsystems.com for details or call 1-800-414-2237.

How To Register

For your convenience and protection, we provide the following secure methods of payment:

[Telephone](#)
[FAX](#)
[Internet](#)
[CompuServe](#)
[Money order](#)

[Click here to view or print ACDSee's Order Form.](#)

Before you register, please take a look at the [Licensing](#) section of this help file.

Unlocking the Software

You will receive a notification of registration from ACD Systems that contains your personal registration name and number.

First, bring up the Registration Dialog by first invoking *About* dialog box, then clicking on the *Register* button.

Enter your name in the registration dialog. Be sure to type your name exactly as it appears in your notification, as capitalization, spaces and punctuation are all taken into account when computing your registration number.

Now enter your personal registration number, and select *Register*. If all is well, ACDSee will respond with a message thanking you for your registration. Otherwise ACDSee will complain that your name and number don't match, and you will have to correct the information.

Telephone Registration

To register by phone, call **1 (800) 414 2237**. In Canada, call **1 (800) 563 7138**.
Or, where international 800 service is unavailable, please call **1 (250) 382 4701**.

- * Operators are standing by to take your order 24 hours a day, every day of the week.
- * Please have your **VISA** or **MasterCard** ready when you place your call.
- * We will send you your registration number via e-mail, post, or FAX.

Software Distribution and Licensing Information

Distribution

This shareware software may be freely distributed, provided that:

- (1) Such distribution includes only the original archive supplied by ACD Systems, Ltd. **You may not alter, delete or add** any files in the distribution archive.
- (2) The distribution does not include a registration number. In particular, you may not distribute a registered version of ACDSee.
- (3) No money is charged to the person receiving the software, beyond reasonable cost of packaging and other overhead.

License

By receiving and/or using ACD Systems software, you accept the following Evaluation and Registered User Agreement. This agreement is a binding legal agreement between ACD Systems Ltd. and the purchasers, users or evaluators of ACD Systems' software and products. If you do not intend to honor this agreement, remove all installed ACD Systems software from your computer now.

Evaluation (Unregistered) and Registered User Agreement

You may evaluate the Shareware program for maximum of thirty calendar days, after which you must register the program with ACD Systems Ltd. or remove the software from your computer.

You may allow other users to evaluate copies of the unregistered Shareware. All evaluation users are subject to the terms of this agreement.

The evaluator/user/buyer/owner is not allowed to attempt to reverse engineer, disassemble or decompile ACD Systems Software and products.

ACD Systems name and any logo or graphics file that represents our software may not be used in any way to promote products developed with our software. All parts of ACD Systems software and products are copyright protected. No program, code, part, image, video clip, audio sample, text or computer generated sequence of images may be copied or used in any way by the user except as intended within the bounds of the single user program.

The evaluator/user/buyer/owner of ACD Systems software will indemnify, hold harmless, and defend ACD Systems against lawsuits, claims, costs associated with defense or accusations that result from the use of ACD Systems software.

ACD Systems is not responsible for any damages whatsoever, including loss of information, interruption of business, personal injury and/or any damage or consequential damage without limitation, incurred before, during or after the use of our products. Our entire liability, without exception, is limited to the customers' reimbursement of the purchase price of the software (maximum being the suggested retail price as listed by ACD Systems) in exchange for the return of the product, all copies, registration papers and manuals, and all materials that constitute a transfer of ownership from the customer back to ACD Systems.

Each registered copy of the ACD Systems software may be used in only one single location by one user. Use of the software means that you have loaded the program and run it or have installed the program onto a computer. If you install the software onto a multi-user platform or network, each and every individual user of the software must be registered separately.

You may make one copy of the registered software for backup purposes, providing you only have one copy installed on one computer being used by one person. If any person other than yourself uses ACD Systems' software registered in your name, regardless of whether it is at the same time or different times, then this agreement is being violated!

The sale of and or distribution of registered copies of this software is strictly forbidden. It is a violation of this agreement to loan, rent, lease, borrow, or transfer the use of registered copies of ACD Systems Software products.

Version History

- + = new feature
- o = performance enhancement or minor change
- !! = bug fix

Version 2.1 - December 1997

- !! Keyboard shortcuts for move, copy and delete not working in Viewer
- !! Auto-zoom feature caused auto-shrink behaviour to occur
- !! When multiple images were selected in browse mode, switching to view mode showed the first image in the selection rather than the image having the file list focus
- !! Misc. documentation errors in help file

Version 2.0 - December 1997

- + Support for multi-page TIFF and DCX
- + Support for progressive JPEG
- + Revised status bars
- + Menu bars with menu item help hints
- + Tool tips
- + *Slide show* and *Slide show recursive* browser commands
- + *Generate file list* command
- + *Brief* and *Detail* file list view modes
- + *Print setup* command
- + *Show file path* print option
- + *Preview dithering* option
- + Slide show *sequence* option
- + Rewritten on-line help file
- !! Misc. bug fixes

Version 1.6 - August 1997

- + Support for IFF (Interchange File Format)
- + Support for PSD (Adobe Photoshop Document)
- + Print setup options
 - o The middle mouse button or left & right mouse buttons toggle full-screen mode in Viewer
 - o Double-clicking on image in viewer window now switches back to the Browser
- !! Fixed support for TIFF-CCITT (previously, some images were loaded incorrectly, looking like bar codes)
- !! Fixed a number of problems displaying animated GIF images

Version 1.5 - April 1997

- + Support for animated GIF
- + support for Windows Metafile images
- + added Remove button to move/copy files directory history
- + new Ctrl+Shift and Ctrl+Alt scrolling modifiers
- !! fixed bug which caused a crash when ACDSee was started with an image in a directory containing filenames without extensions, when the "view all by default" option was turned on
- !! fixed some bugs which caused some TGA images to be read incorrectly

Version 1.4 - December 1996

- + View all mode (browser option) now applies also to launching ACDSee from an external application (i.e., if you view an image with ACDSee, you can use the forward/back buttons to view other images in the same directory)
- + Auto-zoom command and option automatically sets the zoom setting to fit the image to the window/screen
- + The split bar can now be configured to split the window either vertically or horizontally by clicking on it

- with the right mouse button
- + Now supports most TIFF group 3 and 4 FAX images
- + New setup program and automated uninstall
- o Images matching the command-line wildcard patterns are now sorted alphabetically
- o Description file reading is now faster
- !! Fixed bug which caused the description file to be written and read unnecessarily when switching between ACDSee and another application

Version 1.31 - June 1996

- + Copy, Move and Delete commands now available from the viewing window
- + Batch image printing from the Browser
- + New *Reverse* and *Random* slide show sequencing options
- + Files may now be sorted by image attributes and file description
- + Shift and Ctrl may be used in conjunction with cursor keys to modify image scrolling speed
- o Printed images are now scaled to be printed the same size as they appear on the screen, and the file name is printed as a header
- o Some video drivers incorrectly report graphics capabilities, which previously caused ACDSee to disable its zoom function. ACDSee now enables the zoom function regardless of what the video driver says.
- o Cleaned up the association editor interface
- o Now recognizes JPEG image files with headers preceding JFIF data stream
- !! Fixed support for PNG grayscale images
- !! decoder less prone to crash or hang machine on corrupt JPEG images
- !! Fixed glitch when previewing certain large JPG images

Version 1.3 - November 1995

- + Added image browser toolbar
- + Added image browser status bar
- + Added image viewer toolbar
- + Added image viewer status bar
- + The currently viewed image can now be zoomed in and out
- + The dimensions of images in the current directory are now gathered asynchronously
- + Image browser options dialog re-worked
- + Added association editor
- + Added move, copy, rename, parent dir and refresh commands to browser
- + The current directory is now displayed in an editable field
- + Information about the current directory and currently selected files/drives is now displayed in the image browser status bar
- + It is now possible to sort the file list by file description
- + Added option to not flip images in slide show mode until the read-ahead image has been completely decoded
- + Added "Starting up with files" viewer options
- + Added optional bicolor dithering
- o The drive entries now change into the root directory of the corresponding drive
- o PCD decoding is about 80% faster
- o The nag box is easier to get rid of and appears less often in unregistered copies of ACDSee
- !! Fixed conflict with Windows '95 task bar
- !! Fixed JPEG memory leak that occurred on systems running Windows NT or MS-DOS 5.0
- !! Alt+Space can now be used to access the system menu
- !! Several other bug fixes

Version 1.25 - June 1995

- + Added support for PNG images
- + Added support for Kodak Photo-CD images
- + Added support for TIFF images

- + Added print command
- + Added "Auto-Preview Delay" advanced browser option
- + Added "Confirm Delete" advanced browser option
- o JPEG colour previews are much faster now (up to 3x as fast)
- o JPEG now uses the same ordered dithering routines as other image formats
- o Ordered dithering completely rewritten in assembler -> much faster, plus better looking!
- o Floyd Steinberg dithering is about 40% faster
- !! ACDSee can now read files that have been locked as read-only via the share facility
- o The retrieval of image dimensions from the images on the disk for the file list now begins after the file list is displayed, and can be aborted by pressing any key or mouse button. In addition, it no longer brings to a halt the operation of other programs.
- o Multiple selections in the file list are now retained when switching between the Browser and Viewer modes
- !! Decoding routines are now more robust when dealing with truncated image files
- !! Fixed "no icon" problem that occurred on some systems
- !! Fixed several memory leaks
- !! Eliminated random crashes under NT
- !! Fixed crashes after images are deleted
- !! Fixed bug that prevented some JPEG files from being read
- !! Fixed bug that caused ACDSee to read some BMP files incorrectly
- !! Fixed reading of RLE-compressed 32k/64k Targa images
- !! Fixed delay which occurred when switching into Viewer mode with "Pass all images to Viewer" option turned on
- !! Fixed another bug that caused ACDSee to delete descriptions for hidden files, and non-image files when the "Show Image Files Only" option was on
- !! Worked around bug in Windows '95 that prevents the task bar from updating itself properly when a captionless window is hidden (e.g., quitting ACDSee or switching to the Browser from the full-screen image viewer window)
- o CTL3DV2.DLL version 2.26 is now included in a ZIP archive
- o Removed the image count report in the About box for registered users

Version 1.24 - April 1995

- + Added file date/time stamp to file list
- + The file list can now be sorted on Name, Extension, Size or Date/Time in either forward or reverse
- + Added option to show hidden files in the file list
- + Added support for RLE and OS/2 BMP formats
- + Added "Pass all images to Viewer" option
- + Image viewer now shows [image number/number of images current being viewed] in the title bar when viewing multiple images
- + Pressing ESC while the Image Browser is extracting the image dimensions for a directory of images will cancel the process (useful if you log to directory with a lot of images and you don't want to wait for the image dimensions to be loaded in)
- + Added Edit... and Print... commands to Image Browser's pop-up menu
- + You can now specify a directory as an argument to ACDSee, and ACDSee will bring up the Image Browser in the specified directory
- + The respective colours of the directories, images and associated files can now be set by modifying acdsee.ini
- + Added option to not set the hidden attribute on description files
- o Caching image dimensions in description is no longer enabled by default
- !! The Image Browser no longer fails to work on systems with certain networking software
- o BMP and TGA decoding are up to 3 times faster than in version 1.23
- !! Fixed bug that caused ACDSee to delete descriptions for hidden files, and non-image files when the "Show Image Files Only" option was on
- !! Fixed bug that caused ACDSee to start with a hidden window the first time it was run on a system
- !! Fixed bug that caused TGA images with id fields not to be interpreted properly
- !! Fixed bug that allowed the nag box to appear partially or totally off-screen

Version 1.23 - April 1995

- + Added "Shrink image to fit window" option
- + Image previews are now in full colour, with optional JPEG grayscale preview for speed
- + JPEG decompression is between 20% (486) and 40% faster (Pentium)
- + Added "Reload image" command to Image Viewer
- + Image preview mode option: Full Image, 1/2, 1/4, 1/8, or auto size preview
- + You can now switch into the Image Browser after starting ACDSee from the File Manager
- + The slide show can not be stopped/resumed on command. The slide show is now automatically stopped when the view window is minimized.
- o Replaced Viewing Window menu bar with a pop-up menu (use right mouse button)
- o With Auto-Size Window on, the Viewing Window is now maximized if the image is larger than the screen.
- o The split bar now preserves the height of the list box when the height of the Image Browser window is changed, rather than moving proportionally
- o The Image Browser buttons will align into a single column when there is enough vertical space
- o Executable is smaller *and* loads faster
- o Moved all Viewing Window options into a single dialog box
- o Retired the Chunk Decompression option - the decompression rate (lines per tick) is now inversely proportional to the image width
- !! Fixed bug which sometimes caused ACDSee to crash after changing Image Browser options
- !! Fixed bug that arose in version 1.22 where ACDSee didn't close itself properly when launched in Image Viewer mode
- !! Popup Image Browser menu now works properly in a multiple column file list

Version 1.22 - Mar. 1995

- + Created the nifty on-line help file (using ForeFront's ForeHelp software)
- + You can now independently turn on/off the display of associations, file sizes, image dimensions and descriptions, as well as control whether the file list is multi-column or single-column
- + Added option to start up in the directory that ACDSee was in when it last exited
- + Added option to show image dimensions only on fixed drives, which should bring some relief to CD-ROM owners
- + Added option to *not* cache image dimensions in description, which seemed to annoy some people
- + Added pop-up menu to Image Browser file list
- + Image Browser options moved into a separate dialog box
- + The location of the split between the Image Browser file list and the buttons/preview area may now be changed
- + Added button to save Image Browser options
- + Added menu items to save Image Viewer options and Image Viewer window position
- + ACDSee now accepts wildcards (eg, *.jpg) on its command line
- + The unregistered ACDSee nag box appears less frequently while ACDSee is viewing images, (although you shouldn't notice any difference, right? ;-)
- o The font in the Image Browser's file list may now be set by editing ACDSEE.INI (FontName=*fontName*)
- o ACDSee now recognizes JPEG files with the extension ".JPE"
- !! ACDSee now runs properly under Windows NT and Windows '95 as a 16-bit Windows application (tested under version 3.5 of NT and Windows '95 final beta)
- !! ACDSee no longer "looses your place" in the file list after deleting a file
- !! Files can now be selected/deselected with the space bar (using the Shift-F8 selection mode)
- !! Fixed bug in v1.21 that caused ACDSee to complain that "Dropped file could not be read" when a single image was dragged and dropped into the View Window.
- !! It turns out that the smaller executable of version 1.21 was the result of accidentally excluding a resource from the EXE. (ACDSee generated the missing resource automatically at run-time, however this increased the application startup time.) The resource has been re-included so that the EXE is larger, but loads faster.

- o Reading in large directories is much faster now
- !! Fixed a bug that caused ACDSee to show blank images and/or crash when another application deleted files that ACDSee was attempting to slide show
- !! Fixed a bug that sometimes caused ACDSee to delete file descriptions created by another program while ACDSee was running in the same directory
- !! Fixed a bug that prevented ACDSee from recognizing .description files with upper case file names
- !! When you switched from ACDSee to another application and deleted the .description file, and then switched back to ACDSee, it would not realize that the .description file was deleted and not update its file list accordingly
- !! Fixed bug that potentially caused ACDSee to report the wrong associated application for certain file types
- o ACDSee now displays only one delete confirmation box for a multiple file deletion
- !! With image information turned off, ACDSee was still trying to write the image information into the .description files, which caused a rather long wait when changing directories or quitting the program. My apologies particularly to owners of CD-ROM drives!
- o CTL3DV2.DLL now distributed in compressed format, to avoid the warning message if the user forgot to delete it.

Version 1.21 - Jan. 1995

- o Uses CTL3DV2.DLL instead of CTL3D.DLL
- o Executable is a lot smaller
- !! Fixed bug that caused images in the root directory of a drive to not be recognized properly
- !! Fixed bug that caused ACDSee to crash if the root directory of a drive contained no files or subdirectories
- o Having two top-level windows was the source of some grief for the Windows window manager. Now the Image Browser and View Window are both child windows of an invisible main window.
- !! Targa (TGA) images which are RLE-compressed are now read properly
- !! Thumbnails are now generated properly for Grayscale Targa (TGA) images
- !! Fixed bug that caused thumbnails to sometimes be displayed in full size and colour
- !! ACDSee will now spawn itself to view an image even if no association has been made to ACDSee for that file type

Version 1.2 - Jan. 1995

- + Replaced the Open Image dialog with the Image Browser window, providing
 - + optional quick image preview
 - + coloured filenames
 - + optional 4DOS descriptions and image information
 - + 4DOS descriptions may be edited
 - + window may be resized
 - + option to spawn a new copy of ACDSee for each image opened
- + allows launching of other application via file associations
- + Added slide show support
- + Added option to automatically resize the viewing window or not
- + Added Always-On-Top option
- + Added Full-Screen option
- + Added Drag-and-Drop support
- + The view window may now be scrolled using the cursor keys
- + Added GIF interlaced support, and GIF preview
- + Added PCX support
- + Added TGA support
- + Added BMP support (no OS/2 or RLE right now)
- + Added new quantization/dithering routines: No dithering, Ordered Dithering and Floyd-Steinberg dithering (except for JPEG Ordered, which is hard-coded into the decoder)
- + Added Floyd Steinberg dithering process to the thumbnails when the source image is hicolor or truecolor (except to JPEG, which is Ordered and hard coded into the decoder) No dithering for

paletted images right now.

- o Removed support for scroll bars in the view window

- !! Fixed a bug in the registration dialog box that prevented people with long names from registering

Version 1.1 - Dec. 1994

- + Added support for non-interlaced, single-image GIFs

- + Added JPEG quick preview feature

- + Added the #colours in the image to the title bar display

- o Improved the registration system

- o ACDSee uses less memory now

- o Changed the halftone palette system

Version 1.01 - Dec. 1994

- !! Fixed bug that caused ACDSee to crash when multiple copies were running simultaneously (the problem was that I was grabbing a device context and holding it during compression, which is a no-no -- windows only supports five concurrent device contexts)

- o Vast improvement in image quality when displaying grayscale JPEG's in 256-color mode.

- o Reorganized code to make it easier to add other image formats, such as GIF (yes, it's coming...).

Version 1.0 - Nov. 1994

- o Initial release.

Credits

The colour quantization/dithering features of ACDSee were made possible through the use of code produced by the Independent JPEG Group.

The TIFF features of ACDSee were made possible through the use of code in Sam Leffler's TIFF library, version 3.4 beta.

Contacting ACD Systems

E-mail acdshare@acdsystems.com

WEB <http://www.acdsystems.com>
 <http://www.acdsys.com>
 <http://www.acdvictoria.com>

FTP <ftp://ftp.acdsystems.com/pub>
 <ftp://ftp.islandnet.com/acd>
 <ftp://www.servtech.com/pub/users/acdsys>

CompuServe 74404,2711

Telephone	Support	1 (250) 382-4701	2 PM to 9 PM EST, Monday to Friday
	Orders only	1 (800) 414 2237	24 hours a day, 7 days a week

FAX	N. America	1 (800) 819 2207	(orders only)
	International	1 (250) 382 7099	

Post	USA	ACD Systems, Inc. Suite 100, 2201 North Collins Arlington, TX 76011
	Canada	ACD Systems, Ltd. PO Box 730 Victoria, BC, Canada V8W 2P9

Frequently Asked Questions

- 1) *ACDSee says, "ACDSee will not run in less than 256 colours". What do I do to make it run?*
This message indicates ACDSee has determined that Windows is running in fewer than 256 colours. If you know your video card is capable of displaying 640x480x256 or better (most 512k + cards can do this) then you can change your video driver with Windows Setup (in the Main program group in Program Manager).
- 2) *When I run ACDSee, I get a nasty message saying "Cannot find CTL3DV2.DLL" and it won't run.*
See the note about CTL3DV2.DLL in [Installation procedure](#)
- 3) *When I run ACDSee, I get a message saying "This program uses CTL3DV2.DLL, which is not correctly installed."*
The file CTL3DV2.DLL exists in the same directory as ACDSee. This file must be moved into the WINDOWS/SYSTEM directory for ACDSee to work properly.
See the note about CTL3DV2.DLL in [Installation procedure](#)
- 4) *ACDSee is generating hidden files in all my directories. What are they for?*
These are 4DOS description files. They hold file descriptions and information about the images in the directory. You can get rid of them, if you wish, by selecting **View Hidden Files** from the Image Browser options and then deleting them. To prevent ACDSee from generating these files, turn off the **Cache Image Dimensions** option. To prevent ACDSee from making description files hidden, turn off the **Set hidden attribute on description** option
- 5) *Norton Desktops file manager deletes my file descriptions and/or crashes the system after using ACDSee.*
Norton Desktop does not support the new 4DOS 5.0 and later description file format.
Turn off the **Cache Image Dimensions** option.
- 6) *I am using Norton Desktop. In ACDSee, when I go to move or copy a file and click on Browse..., the program exits with no message.*
The Norton Desktop provides an enhanced Open File dialog box (so-called File Assist) which replaces the standard Windows 3.x system dialog. This replacement dialog box conflicts with ACDSees Browse Directory feature. You will need to disable this feature by editing the FASSIST.INI file in your Windows directory. Under the [Compatibility] section, add the line **ACDSEE=0x01dc**. This will disable the File Assist feature for ACDSee only, so that other programs will continue to use the File Assist dialog.
- 7) *Under Windows 95, I get an error message upon launching ACDSee to view a picture from another program. (but ACDSee still displays the picture)*
First of all, why aren't you using *ACDSee 32 for Windows 95/NT*? Visit our web site at <http://www.acdsystems.com> to get ACDSee 32 now!
Anyway, this problem is commonly caused by upgrading your system from Windows 3.1 to Windows 95. To fix the problem, use Explorer's "View|Options" command, select the "File Types" tab, and disable the DDE command in the offending entry.
- 8) *When I zoom in on an image, sometimes my system locks up.*
The video drivers for CL-542x video cards have a bug which causes this lock-up. You can alleviate the problem by not zooming in to such a great degree, especially on large images.

File Associations

A File Association lets you launch applications to view files quickly and easily by acting on document files that the application can open.

For each file type (filename extension) you can define three separate actions: **open**, **edit** and **print**. The open action is the default action taken when you double click on a document file in ACDSee or File Manager. The edit and print actions are additional actions that you can configure. The print action is used by File Manager to print document files, and the edit action is not used by File Manager.

See [Extensions/Command Associations Dialog Box](#)

Order Form

ACDSee 16 v2.1 Order Form

USA

ACD Systems, Inc.
Suite 100, 2201 North Collins
Arlington, TX 76011

Canada

ACD Systems, Ltd.
PO Box 730
Victoria, BC Canada V8W 2P9

North America

Phone: 1 (800) 414 2237
Fax: 1 (800) 819 2207

International

Phone: 1 (250) 382-4701
Fax: 1 (250) 382-7099

Date _____

Name _____

Company _____ Phone _____

Street _____ FAX _____

City _____ State/Province _____ Country _____ Zip/PC _____

Email _____ @ _____

All Amounts Are United States Dollars

Single user license: License only - no disk - no shipping = \$26.00
or
We ship one 3.5" registered disk (+ shipping) = \$30.00

Subtotal = _____

Disk shipping (U.S. & Canada) @ \$4.95 = _____

Disk shipping (Other Areas) @ \$11.00 = _____

Total (US funds only) = _____

Method of payment: Cheque _____ Money order _____ Mastercard _____ VISA _____

Name exactly as on credit card _____

Card number _____

Exp. Date _____ **Signature** _____

Move/Copy Files Dialog Box

This dialog box allows you to efficiently copy and move files from the current directory to a different directory.

Source Directory

This is the current directory. This field is not editable, but you may select the text in it and copy it with Ctrl+C.

Destination Directory

This is the directory that the file(s) will be copied or moved to. You can specify a directory in three ways:

- 1) Type the name of the directory in the text edit box
- 2) Select a directory from the list box
- 3) Hit the Browse... button to browse through the directory tree

ACDSee automatically remembers the last 10 destination directories accessed with this dialog box. This feature enables you to rapidly copy or move files to frequently access directories.

Overwrite

This option affects how ACDSee reacts when the files being copied or moved are already present in the destination directory.

- Yes** Always overwrite a file in the destination directory with the source file.
- No** Do not copy or move a source file if it already exists in the destination directory.
- Ask** Each time a source file exists in the destination directory, ask whether or not it should be overwritten.

Extension/Command Associations Dialog Box

This dialog box allows you to change the actions taken to open, edit and print document files. These actions are used not only by ACDSee, but by File Manager and other Windows programs. Associations are "registered", or stored, in the Windows Registration Database. Take care when modifying the associations because they may be used by other Windows applications for correct operation.

Extension

Select or enter the extension you wish to change the associations for.

You may type in an extension that does not appear in the list. The extension will be added to the registration database when you select the "Set" button.

To remove an extension from the registration database, select the Delete button beside the Extension Combo Box.

Class

File types may be grouped into classes. Each class may contain several different extensions. This lets you set up a bunch of similar extensions (e.g., .JPG, .GIF, .BMP) to operate similarly. Every extension must belong to a class. The default class is the name of the extension (e.g., the default class for the extension "DIZ" would be ".DIZ").

When you select an extension from the Extension Combo Box, the class it belongs to appears here automatically. You may switch to a different class by selecting a different class from the list, or by typing in the name of a new class. This new class will be added to the registration database when you select the "Set" button. If you leave the class blank, the default class (formed from the name of the extension) will be assigned.

Open (default) association

Edit association

Print association

In each of the edit boxes, you may enter a command line to be used to open the associated documents of the selected class. You should enter the full path name to an executable file, followed by any command line switches required, followed "%1". The "%1" is a place holder for the document file name. It will be automatically appended to the command line if you omit it. You may select the corresponding Browse button to help you find the path to the desired executable.

For example, to associate a class of image files to be opened with ACDSee, click on the Browse button, locate ACDSEE.EXE and hit OK. The path to ACDSEE.EXE will be entered in the command line edit box for you. Click on "Set". The "%1" will be appended to the command line. Now, whenever you double click on a file belonging to the class (e.g., cat.jpg), the command-line you entered will be expanded to "<path>\acdsee.exe cat.jpg" and the document will be launched.

Note: Remember to select the "Set" button after you have modified the command boxes so that your changes will be saved in the registration database.

Select the Close button when you are finished setting the desired associations.

Program Updates

ACDSee is being continuously upgraded with new features. Watch our web site for details on new release and what has been added. You may download the most recent version of ACDSee from the following sources:

Internet WWW

<http://www.acdsystems.com>

<http://www.acdvictoria.com>

<http://www.acdsys.com>

Internet FTP

<ftp://ftp.acdsystems.com/pub>

<ftp://ftp.islandnet.com/acd>

<ftp://www.servtech.com/pub/users/acdsys>

Direct Modem Connection

(250)479-6253, N81, 9600-14.4k, login as *acdsys*

If you have any ideas that you would like to see implemented in ACDSee, please tell us about them. We believe ACDSee is already the best image viewer available for Windows, but it never hurts to make it better!

Image Browser Shortcut Keys

You can use the following shortcuts within the browser:

<u>Key</u>	Function
Backspace	Move up one directory.
F5	Refresh the list of files.
Ctrl+V	Preview the selected image.
Enter	View the selected files.
Ctrl+P	Print the selected images.
Ctrl+C	Copy.
Ctrl+M	Move.
DEL	Delete. Shift to bypass confirmation.
F2 or Ctrl+R	Rename.
Ctrl+D	Describe.
Ctrl+O	Options.
Ctrl+B	About.
F1	Help.
Ctrl+L	Shell open.
Ctrl+E	Shell edit.
Alt+X	Quit.
Ctrl+A	Associate.
Ctrl+/	Select all files
Ctrl+I	Toggle the display of image files only.
TAB	Move between the file list and the path box.
Shift+F8	Toggle multiple selection keyboard mode (SPACE to tag).
Shift + Esc	Minimize window.

Note: most commands allow the Alt key to be substituted for the Ctrl key, if you prefer to use the Alt modifier.

Image Viewer Shortcut Keys

You can use the following shortcuts within the Viewer:

<u>Key</u>	<u>Function</u>
Esc	Return to the browser or quit.
Enter or double-click	Switch to the browser.
Backspace or Page Up	Previous image.
Space or Page Down	Next image.
Home	First image
End	Last image
Ctrl+S	Stop or resume slide show.
F5	Reload.
Num -	Zoom out.
Num +	Zoom in.
Num *	Zoom to fit.
Num /	Zoom 100%.
Ctrl+P	Print.
Ctrl+C	Copy to.
DEL	Delete. Shift to bypass confirmation.
F2	Rename.
Ctrl+D	Describe.
Ctrl+M	Move to.
Ctrl+W	Set the selected BMP image as the desktop wallpaper.
Ctrl+O	Options.
Ctrl+B	About.
F1	Help.
Alt+X	Quit.
Ctrl+F or Middle mouse button or Both left and right buttons	Toggle full screen mode.
Cursor keys	Scroll image. Shift to scroll slowly Ctrl to scroll quickly Ctrl+Shift to scroll one page at a time Ctrl+Alt to jump to edge of image
Shift + Esc	Minimize window.

Note: most commands allow the Alt key to be substituted for the Ctrl key, if you prefer to use the Alt modifier.

FAX Registration

1. print out and complete the supplied order form
2. FAX the completed form to 1 (800) 819 2207 [outside North America: 1 (250) 382-7099]
3. we will send you your registration number via e-mail, post or FAX

CompuServe Registration

If you are a member of the CompuServe Information Service, you may register via the Shareware Registration Database

1. log onto CompuServe
2. enter GO SWREG
3. follow the on-line instructions
4. enter the title ACDSee for the search criteria and then select Display Selected Titles
5. select ACDSee 16, click on Description and then follow the on-line instructions

Or you can use the following list of numbers to locate this and other ACD Systems products that can be registered via SWREG:

PicaView 32	14209
PicaView NT	14208
PicaView 16	6115
ACDSee 16	4057
ACDSee 32	10146

Your registration information will be electronically mailed to your CompuServe account within a few business days.

Internet registration

If you have a credit card, you can register via the Internet from our web site:

<http://www.acdsystems.com>

Money Order Registration

1. print out and complete the supplied order form
2. mail the order form along with your [US funds] cheque or money order to one of the addresses listed at the top of the order form
3. we will send you your registration number via e-mail, post or FAX

Shareware Nag Box

As an encouragement to register, ACDSee will occasionally bring up its About box when you quit the application. This is supposed to be very annoying, and will of course cease and desist the moment that you register.

Site License Rates

If your company or institution is interested in licensing ACDSee for several users, you can save a lot of money by purchasing a site license. The program is licensed to your company for use at a single site with the agreed upon number of users.

The pricing schedule for site licenses can be found on the WWW at:

<http://www.acdsystems.com>

If you are interested in arranging a site license, please give us a call toll-free at 1-800-414-2237, fax 1-800-819-2207, or e-mail acdshare@acdsystems.com.

4DOS Descriptions

4DOS is a replacement DOS shell for COMMAND.COM. It adds many useful features that makes DOS much nicer to use. One of the features that 4DOS supports is file descriptions.

You do not need actually *need* 4DOS to use file descriptions in ACDSee, but it is still a useful tool to have.


ACDSee stores your file descriptions in a hidden file in the current directory called DESCRIPT.ION. It can also cache image information there so that ACDSee can bring up directories with lots of images much quicker. You can alter this behavior with the Cache image info in descript.ion. Option.

It is also possible to configure ACDSee to not make descript.ion files hidden. See the Set hidden attribute on descript.ion option

IMPORTANT NOTE: Norton Desktop and some other applications do not handle application-specific data stored in the descript.ion files. If you use Norton Desktop's file manager, you will have to uncheck the Cache image info in descript.ion option.

Slide show feature

When more than one image is opened for viewing, ACDSee can enter Slide Show mode. When Slide Show mode is on, Images will be flipped automatically every few seconds.

To start a slide show, first open several images, either via the image browser, drag and drop, or from the command line. Then invoke the Start Slide show command . See also: [Slide show options](#)

Drag-and-Drop Feature

ACDSee allows you to select one or more files from the File Manager, drag them over to ACDSee's window, and drop them there. This will cause ACDSee to view the images in slide show mode. This also works when ACDSee minimized (iconified). Any files dropped that are not image files will be ignored.

Image Panning/Scrolling

When the mouse cursor appears as a hand, the image is larger than the size of the image viewing area. To pan (scroll) the image, click with the left mouse button anywhere on the image and drag.

Alternatively, use the cursor keys to move the image within the window. Hold down Shift to scroll more slowly, or Ctrl to scroll more quickly.

Full screen mode <Ctrl+F>,
 <Middle mouse button>,
 <Left+Right mouse buttons>

In full screen mode, the image area is expanded to fill the entire screen. All windows, controls, menu bars, etc. are hidden from view.

Multiple Selection Mode

Once in Multiple Selection Mode, the focus bar will begin to blink. You may now move the focus bar with the cursor keys, and toggle the selection status of each entry with the space bar. To return to normal selection mode, press shift-F8 again.



Up one level <Backspace>

Change into the parent directory.



Refresh

<F5>

Re-load the file list information from the disk.



Preview

<Ctrl+V>

Display a preview of the currently selected image.



View <Enter>

Switch into Viewer mode and show the currently selected image(s).



Print <Ctrl+P>

Print the currently selected image(s).



Copy to

<Ctrl+C>

Copy the selected file(s) to a different directory.



Move to

<Ctrl+M>

Move the selected file(s) to a different directory.



Delete

<Delete>

Delete the selected file(s).



Rename

<F2>

Rename the selected file(s).



Describe

<Ctrl+D>

Edit the 4DOS description for the selected file(s).



Brief mode <F11>

Brief file list display mode. Click with right mouse button to change which details are displayed or to set the file list sort order.



Detail mode <F12>

Detail file list display mode. Click with right mouse button to change which details are displayed or to set the file list sort order.



Options

<Ctrl+O>

Configure the options for the image browser.



About <Ctrl+B>

Display version and registration information about ACDSee.



Help <F1>

Displays ACDSee's on-line help



Exit <Alt+X>

Close ACDSee.



Browser

<Enter>

Switch to Browser mode.



Previous image

<Page Up>

Show previous image in view sequence.



Next image <Page Down>

Show next image in view sequence.



Stop/resume slide show

<Page Down>

Stop or resume the automatic slide show.

See also: [slide show options](#)



Previous page <Shift+Page Up>

Show previous page of image.



Next page

<Shift+Page Down>

Show next page of image.



Reload <F5>

Reload the image from disk.



Zoom out



Decrease magnification (zoom level) of image.

Note: Some video drivers handle the zoom function better than others. Some drivers don't work at all. A good accelerated video driver is recommended for best performance.



Zoom in

<+>

Increase magnification (zoom level) of image.

Note: Some video drivers handle the zoom function better than others. Some drivers don't work at all. A good accelerated video driver is recommended for best performance.



Print <Ctrl+P>

Print the current image.



Copy to <Ctrl+C>

Copy the current image to another directory.



Move to

<Ctrl+M>

Move the current image to another directory.



Delete <Delete>

Delete the current image file.



Rename

<F2>

Rename the current image file.



Describe

<Ctrl+D>

Edit the file description for the current image.



Options

<Ctrl+O>

Configure the options for the image viewer.

Current directory box

Displays the current directory being browsed.

You can change the current directory by

- 1) typing in the name of the desired directory into this box and pressing <Enter>
- 2) selecting a directory in the file list and pressing <Enter>
- or 3) double-clicking on one of the directories or drives in the File List

It is also possible to specify a wildcard file filter in the directory. For example, entering "C:\Windows*.bmp" and hitting <Enter> would list all files in the C:\Windows directory starting with "a" and having an extension of "bmp".

You can turn the path box on or off with <Ctrl+Shift+D>.

File list

Displays a list of files in the current directory.

See also: [File list options](#)

Preview area

Displays a thumbnail version of the selected image.

See also: [Preview options](#)

Split bar

Click and drag this bar to change where the browser window is split between the file list and the preview area. Click with the right mouse button to toggle the split between horizontal and vertical layout.

Status bar

Displays information about the current directory and the currently selected file(s). You can turn the status bar on or off with <Ctrl+Shift+B>.



Menu bar

Gives you access to the browser commands. You can turn the menu bar on or off with <Ctrl+Shift+M>.

Image area

This is where the images are displayed. If an image is larger than the size of this area, you can pan (scroll) the image



You can change the magnification (zoom level) using the  and  buttons.

The View Window and ACDSees minimized-state icon are Drag-and-Drop aware. This allows image files to be dragged from File Manager onto ACDSee for viewing.

A pop-up menu of commands will appear if you click with the right mouse button.

Menu bar

Gives you access to the viewer commands. You can turn the menu bar on or off with <Ctrl+Shift+M>.

Status bar

Displays information about the image list and the currently viewed image. You can turn the status bar on or off with <Ctrl+Shift+B>.

Brief mode options

Allows you to customize which item attributes are displayed in Brief (multi-column) mode.

[More information](#)

Detail mode options

Allows you to customize which item attributes are displayed in Detail (single-column) mode.

Show image files only

Hide all files that are not images readable by ACDSee.

Tip: you can also toggle this option with (Ctrl+I)

Show hidden files

Show files and folders that have the hidden attribute.

Tip: you can also toggle this option with (Ctrl+H)


File list font and colours

Allows you to customize the font used in the file list and the colours used to display item text.

You can set a different colour for directories, image files and associated files by double-click on the corresponding entry in the list on the left (or click on the Set Colour) button).

Click on the Set Font button to set the font used for all text.

Automatic preview

Check this option to have a thumbnail preview of the currently selected image automatically come up beside the file list. Otherwise, the preview will only be displayed when you use the Preview command .

Automatic preview delay

Wait for a period of time after an image is selected before engaging the automatic preview.

- + increase to reduce sluggish response to image selection
- decrease to cause the preview to appear more rapidly

Preview size

Sets the size of the preview image.

Full	full resolution
1/2	one half resolution
1/4	one quarter resolution
1/8	one eighth resolution
Auto	variable - uses the largest resolution which fits in the available preview area

Preview dither

Configures the type of dithering to use when rendering the preview image. Dithering is only available on 256, 32k or 64k colour displays. **Floyd-Steinberg** is best for 256 colour displays, whereas **Ordered** is best for 32k/64k displays.

Read image headers

Sets the policy on whether files should be examined for image data.

Never	do not examine any files, ever
Always	always examines all files
Only on fixed disks	examine files on local hard drives only

When the **Never** setting is in effect, it is assumed that all files ending in an appropriate extension (.BMP, .JPG, etc.) are images files, and all other files are not. In addition, image properties are not displayed until after each image is accessed by previewing it. This is the fastest option because no files need to be opened for examination.

By contrast, the **Always** setting examines all files regardless of their extension. This allows the detection of image files with non-standard extensions. In addition, image properties are pre-fetched for all image files.

Because all files must be examined every time a folder is entered, this option can cause a lot of disk access and cause sluggishness. This is especially so when reading from slow-access removable media such as floppy, CD-ROM and network drives. The **Only on fixed disks** option is thus a useful compromise.

Tip #1: you can cancel the file examination process on an ad hoc basis by hitting <Esc>.

*Tip #2: you can optimize file examination tremendously by enabling the **cache image info in descript.ion** option.*

Cache info in descript.ion files

Cache image information in a file called descript.ion. Information about the files in the current folder will be automatically saved to and recalled from this file rather than examining every file in the directory each time it is entered, thus speeding up performance significantly. However, this feature may make the descript.ion files unreadable by some older software such as Norton Utilities File Manager.

Confirm file deletion

Display a confirmation dialog box before deleting files.

Set hidden attribute on `descript.ion`

Hide `descript.ion` files so that they are not normally displayed. Note: setting this option may interfere with certain disk optimization software.

Remember last directory

Start up in the directory last accessed from the previous session.

Show tool tips

Show help hints when the mouse cursor is placed on top of buttons in the tool bars.

Set file associations

Configure what external applications are used to open, edit and print files.

Save options

Close the options window and save the settings permanently as defaults.

OK

Close the options window and apply the settings [but dont save them permanently].

Cancel

Close the options window and cancel all changes made to the settings.

Enable read-ahead decoding

When checked, ACDSee will immediately start decompressing the next image in the sequence after the currently viewed image has been completely decompressed. This means that when you flip to the next image, it will already be partially or completely decompressed. The disadvantage of this feature is that scrolling tends to be more chunky when ACDSee is decompressing.

Auto-start

Causes ACDSee to automatically start a slide show when more than one image is opened.

Page flip delay

This slider lets you set the time delay between images. After the current image has been completely decoded and displayed, ACDSee will pause for the requested number of seconds before displaying the next image.

Delay flip until next image is decoded

Causes ACDSee to pause longer than the specified delay, if necessary to complete decoding of the next slide show image.

Sequence

Specifies the order in which to show images in a slide show.

Forward From first to last

Reverse From last to first

Random According to a random permutation.

Wrap around at last image

When checked, ACDSee will start over from the first image after the last image in the sequence has been displayed. Otherwise, ACDSee will halt the automatic flipping process. This option has no effect when manually flipping images.

Startup

This option lets you change the behavior of ACDSee when it is invoked more than once to view multiple images.

Open new window

This is the normal mode of operation. This causes a separate copy of ACDSee to run for each image launched.

Replace image in current window

This causes the launched image(s) to be passed to the already running copy of ACDSee. The new images replace any images that were previously open.

Add images to current window

This causes the launched image(s) to be passed to the already running copy of ACDSee. The new images are appended to the working sequence of images that were previously open. The viewer automatically advances to show the first new image.

Show all images in directory

Normally, when a single image is selected in the file list and the View command is invoked, or if ACDSee is launched to view a single file, you will only be able to view that one image. You must return to the Browser to view other images in the same directory.

When this option is checked, the Browser will pass *every* image in the current directory to the Viewer, which then allows you to view the directory of images by stepping forward and back. (If multiple files are selected in the Image Browser, only those files will be shown, however.)

Likewise, if you launch a single image from File Manager, you will be able to view other images in the same directory.

Always On Top

This option is available from the Viewer Options dialog, or from the System Menu of the View Window. When checked, the View Window will appear as the topmost window, even when other windows are activated. Otherwise, the window behaves normally.

Full-Screen

Selecting this item will cause the viewer to enter Full-Screen mode, where the window is maximized, and the titlebar and menu are hidden. To get back to normal mode, hit Ctrl+F

Shortcuts: **Ctrl+F, middle mouse button, left & right mouse buttons**

Menu

Turns the image viewer menu bar on or off. (The menu bar is always turned off in Full-Screen mode).

Shortcut: Ctrl+Shift+M

Toolbar

Turns the image viewer tool bar on or off. (The toolbar is always turned off in Full-Screen mode)

Shortcut: Ctrl+Shift+T

Status bar

Turns the image viewer status bar on or off. (The status bar is always turned off in Full-Screen mode)

Shortcut: Ctrl+Shift+B

Hide mouse cursor in full-screen

When checked, the mouse cursor will be blanked (hidden) in full-screen mode. The mouse cursor will become visible again when the window is closed, or full-screen mode is switched off, or when either the left or right mouse button is pressed.

Save current window position

Saves the current size and position of the View window. Whenever ACDSee enters View Mode, it will position the View Window accordingly. If the *Auto window size* option is on, the auto-sized window is centered around the preferred window position.

This command also saves the *Always on top* and *Full-screen* window attributes.

Auto shrink

When on, causes images larger than the window to be shrunk to fit completely within the window, without changing the aspect ratio. However, when the **Change Window Size To Fit Image** option is also on, the image will only shrink when the image is larger than the screen.

Auto enlarge

When on, causes images smaller than the window to be enlarged to fit the window as closely as possible without changing the aspect ratio. When the **Change Window Size To Fit Image** option is also on, the image will be enlarged to fit the screen.

Auto window size

By checking this option, the Image Viewer window will automatically change its size to match the currently loaded image. The window will continue to resize itself as you view images. If an image is larger than the screen resolution, then the window will be made as large as possible. If the *Auto shrink* option is on as well, then the image will be shrunk if necessary to fit the screen dimensions. Otherwise you can scroll (pan) the image within the window. By unchecking this option, you can go back to your preferred window size and position again.

Snap cursor to buttons

When checked, causes the mouse cursor to jump to the center of the button when any of the Forward, Back, Zoom In or Zoom Out buttons are pressed. This is useful since invoking any of these commands can cause the window to be repositioned if the Change Window Size to Fit Image option is on, so that the mouse cursor would no longer be over the button clicked.

Dithering

When running Windows with a 256, 32k or 64k colour graphics driver, truecolor images are quantized down to match the available number of colours of your video card. To improve the appearance of the quantized image, a dithering algorithm should be applied.

256-Colour Dithering Options

Ordered: Default. Fast and good quality.

Floyd-Steinberg: Slower but slightly better quality.

HiColour Dithering Options

None: Fastest and good quality.

Ordered: Slightly slower but better quality, especially for computer generated images.

Save options

Close the options window and save the settings permanently as defaults.

