

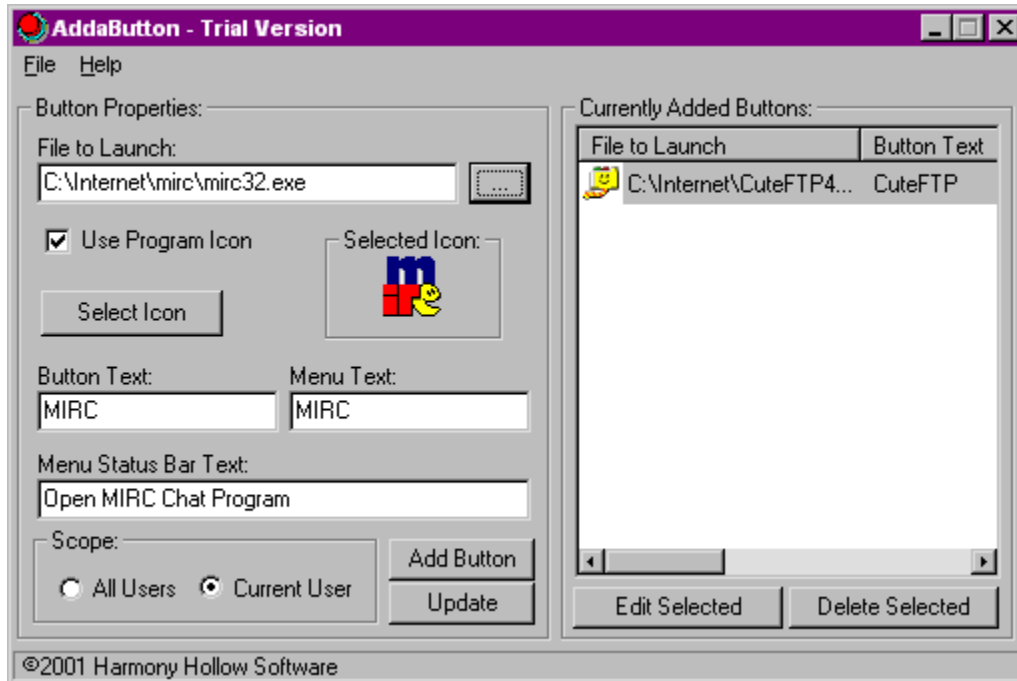
File Menu

Exit

Choose this item from the file menu to exit the program.

Using the Program

Below is an exact representation of the AddaButton user interface. Click an area of the image for help on that particular feature.



Contact and Support Info

Mail

Kyle Dusang
c/o Harmony Hollow Software
17436 Romero Rd.
Covington, LA 70433

Web Site

<http://www.harmonyhollow.net>

E-mail

support@harmonyhollow.net

Results Window

Any items found in your favorites list that match the text you entered into the "Search Text" box are displayed here. Double clicking an item in this window causes Internet Explorer to navigate to its corresponding URL.

The shortcut description as it appears in Internet Explorer's Favorites menu is displayed in the "Description" column, the shortcut's URL in the "URL" column, the date the item was added to your Favorites in the "Added" column, and the item's folder location in the "Location" column. (If the item is in your root Favorites folder, a "\" is displayed in this column.)

Help Menu

Contents

Choose this item to display this help file.

Purchase Full Version (Trial version only)

Click this item to open your web browser to the Harmony Hollow Software Purchase Page where you will find a link to a convenient and secure online order form with which to purchase the full version of the program for only \$9.95 using your credit card.

About

Displays a dialog box with version and copyright information about the program, plus ways to contact the author.

About the Program

AddaButton lets you add buttons directly to Internet Explorer's own toolbar which can be used to launch any program or document on your computer. Easy-to-use interface allows you to define the button text, icon, associated "Tools" menu command text, and even the text to be displayed in I.E.'s status bar when the mouse cursor is over the menu command.

Buttons can be optionally added to I.E.'s toolbar for only the current Windows user profile or for all users if your system is configured for more than one Windows user profile.

Buttons can also be deleted or their properties edited from within the program at any time after they have been added.

The trial version of the program allows you to add buttons to I.E.'s toolbar for evaluation purposes but they will only remain there for as long as the program is open. The full version lets you add up to twenty buttons that remain for as long as you like, even after the program is closed.

Starting the Program

If you are using Internet Explorer 5 or later, installation of this program adds a new "AddaButton" button to Internet Explorer's toolbar plus a new menu item under the "Tools" menu, giving you convenient access to the program directly from within I.E.

Note: If Internet Explorer is running when you install AddaButton, it must be restarted before the new button will show up on its toolbar. If the button does not show up then, right-click in any blank space on the toolbar to show the customization dialog, select the "AddaButton" icon from the list of available buttons on the left and click the "Add" button in the center. Click "OK" to close the dialog and the button will appear.

The program can also be started from its desktop icon or by finding the group in your Start menu to which you installed the program icons and double-clicking the "AddaButton" icon there.

License & Copyright

NOTICE TO USERS: CAREFULLY READ THE FOLLOWING LEGAL AGREEMENT. USE OF THE SOFTWARE PROVIDED WITH THIS AGREEMENT (THE "SOFTWARE") CONSTITUTES YOUR ACCEPTANCE OF THESE TERMS. IF YOU DO NOT AGREE TO THE TERMS OF THIS AGREEMENT, DO NOT INSTALL AND/OR USE THIS SOFTWARE. USER'S USE OF THIS SOFTWARE IS CONDITIONED UPON COMPLIANCE BY USER WITH THE TERMS OF THIS AGREEMENT.

1. LICENSE GRANT. HARMONY HOLLOW SOFTWARE grants you a license to use this SOFTWARE on one machine. "You" means the company, entity or individual whose funds are used to pay the license fee. "Use" means storing, loading, installing, executing or displaying the SOFTWARE. You may not modify the SOFTWARE or disable any licensing or control features of the SOFTWARE except as an intended part of the SOFTWARE's programming features. When you first obtain a copy of the SOFTWARE, you are granted an evaluation period of not more than 30 days, after which time you must pay for the SOFTWARE according to the terms and prices discussed in the SOFTWARE's documentation, or you must remove the SOFTWARE from your system. This license is not transferable to any other system, or to another organization or individual. You are expected to use the SOFTWARE on your system and to thoroughly evaluate its usefulness and functionality before making a purchase. This "try before you buy" approach is the ultimate guarantee that the SOFTWARE will perform to your satisfaction; therefore, you understand and agree that there is no refund policy for any purchase of the SOFTWARE.

2. OWNERSHIP. The SOFTWARE is owned and copyrighted by HARMONY HOLLOW SOFTWARE. Your license confers no title or ownership in the SOFTWARE and should not be construed as a sale of any right in the SOFTWARE .

3. COPYRIGHT. The SOFTWARE is protected by United States copyright law and international treaty provisions. You acknowledge that no title to the intellectual property in the SOFTWARE is transferred to you. You further acknowledge that title and full ownership rights to the SOFTWARE will remain the exclusive property of HARMONY HOLLOW SOFTWARE and you will not acquire any rights to the SOFTWARE except as expressly set forth in this license. You agree that any copies of the SOFTWARE will contain the same proprietary notices which appear on and in the SOFTWARE.

4. REVERSE ENGINEERING. You agree that you will not attempt to reverse compile, modify, translate, or disassemble the SOFTWARE in whole or in part.

5. NO OTHER WARRANTIES. HARMONY HOLLOW SOFTWARE DOES NOT WARRANT THAT THE SOFTWARE IS ERROR FREE. HARMONY HOLLOW SOFTWARE DISCLAIMS ALL OTHER WARRANTIES WITH RESPECT TO THE SOFTWARE, EITHER EXPRESS OR IMPLIED, INCLUDING BUT NOT LIMITED TO IMPLIED WARRANTIES OF MERCHANTABILITY, FITNESS FOR A PARTICULAR PURPOSE AND NONINFRINGEMENT OF THIRD PARTY RIGHTS. SOME JURISDICTIONS DO NOT ALLOW THE EXCLUSION OF IMPLIED WARRANTIES OR LIMITATIONS ON HOW LONG AN IMPLIED WARRANTY MAY LAST, OR THE EXCLUSION OR LIMITATION OF INCIDENTAL OR CONSEQUENTIAL DAMAGES, SO THE ABOVE LIMITATIONS OR EXCLUSIONS MAY NOT APPLY TO YOU. THIS WARRANTY GIVES YOU SPECIFIC LEGAL RIGHTS AND YOU MAY ALSO HAVE OTHER RIGHTS WHICH VARY FROM JURISDICTION TO JURISDICTION.

6. SEVERABILITY. In the event of invalidity of any provision of this license, the parties agree that such invalidity shall not affect the validity of the remaining portions of this license.

7. NO LIABILITY FOR CONSEQUENTIAL DAMAGES. IN NO EVENT SHALL HARMONY HOLLOW SOFTWARE OR ITS SUPPLIERS BE LIABLE TO YOU FOR ANY CONSEQUENTIAL, SPECIAL, INCIDENTAL OR INDIRECT DAMAGES OF ANY KIND ARISING OUT OF THE DELIVERY, PERFORMANCE OR USE OF THE SOFTWARE, EVEN IF HARMONY HOLLOW SOFTWARE HAS BEEN ADVISED OF THE POSSIBILITY OF SUCH DAMAGES. IN NO EVENT WILL HARMONY

HOLLOW SOFTWARE' LIABILITY FOR ANY CLAIM, WHETHER IN CONTRACT, TORT OR ANY OTHER THEORY OF LIABILITY, EXCEED THE LICENSE FEE PAID BY YOU, IF ANY.

8. GOVERNING LAW. This license will be governed by the laws of the State of South Carolina as they are applied to agreements between South Carolina residents entered into and to be performed entirely within South Carolina . The United Nations Convention on Contracts for the International Sale of Goods is specifically disclaimed.

9. ENTIRE AGREEMENT. This is the entire agreement between you and HARMONY HOLLOW SOFTWARE which supersedes any prior agreement or understanding, whether written or oral, relating to the subject matter of this license

Type or paste the full path and name of the file here that you would like to be launched when you click the button being added. For example. "C:\Program Files\MyProgram.exe" (without the quotes). The "..."
button beside the textbox can also be clicked to open a dialog allowing you to browse for a file name as well. Selecting a file from this dialog will place its path and name in the textbox. You may also enter a URL in this space to have IE navigate to that URL when the added button is clicked. Due to limitations in Internet Explorer, command-line parameters cannot be used here.

Hint: You can also drag any file or URL link onto this field and the full path and name of the file will automatically be filled in for you.

Type or paste the text here that you would like to be displayed as the caption for the button being added. Keep in mind that Internet Explorer sizes the width of the buttons on its toolbar according to longest caption of all of its buttons. So if you enter a really long text string here, each button on I.E.'s toolbar will be resized to be the same width as this one.

If all buttons added will not fit on the visible portion of the toolbar, a small arrow button appears at the far right end that acts as a "extension" of the toolbar and when clicked, will drop down a menu containing the remaining buttons that are not visible.

Hint: If you press "Ctrl + a" on your keyboard immediately after typing text in this box, the "Menu Text" and "Menu Status Bar Text" fields will be automatically filled with the same text.

Type or paste the text here that you would like to appear on Internet Explorer's "Tools" menu. This item corresponds to the button being added and performs the same exact action as if the button was clicked. In the event you choose to not have I.E.'s toolbar visible, the programs for which you have added buttons to the toolbar can still be launched from this menu.

Type or paste the text here that you would like to be displayed in Internet Explorer's status bar when the mouse cursor is held over the item on its "Tools" menu that corresponds to the button being added.

Choose an option here that will determine whether the button being added is displayed on Internet Explorer's toolbar for all Windows user profiles on your system or just the current one (if your system is set up for different users to use separate profiles).

Once buttons are added to I.E.'s toolbar using the program, their properties will be displayed in this list every time the program is started. They can be deleted or their properties edited by clicking one of the two buttons beneath the list.

Click this button once you have defined all the properties of the button you would like to add to I.E.'s toolbar. The next time I.E. is started, the button will show up on its toolbar. If it does not, that means you have previously customized the toolbar and must do so again to make the new button show up. This is done by right clicking anywhere on the toolbar and choosing customize from the menu that appears. Select the new button from the list of "Available Buttons" on the left side of the dialog that appears and click the "Add" button in the center. Close the dialog and the new button will be there.

Clicking this button replaces all property values for the button currently selected from the list on the right with the ones defined in the spaces above. This is usually done if you have selected to edit the selected button's properties by clicking the "Edit Selected" button below the list, and have change any of its properties or simply wish to replace any of the currently selected button's properties with different ones you have defined.

Click this button if you wish to change any properties of the button selected in the list above. This places all of its property values back into the appropriate spaces on the left and allows you to change any that you wish. Once you have made any changes, click the "Update" button to replace the values. The changes will show up the next time I.E. is started.

Click this button to remove the button you have currently selected in the list above from I.E.'s toolbar. The next time I.E. is started the button will be gone.

Click this button to select an icon from the program's built-in icon library to be displayed on the button being added. A small dialog will open containing 25 icons to choose from. Simply click the one you wish to be displayed on the button and click "OK". Note: These icons are specially formatted and sized for use on I.E.'s toolbar. Using one of these ensures that the button will exhibit I.E.'s natural "hot/cold" behavior.

The icon that is currently selected to be displayed on the button being added is displayed here.

Check this box if you would like the default icon of the program that you wish to launch with the button being added to be displayed on the button. Kepp in mind that I.E. requires specially formatted and sized icons to make its buttons have a "hot/cold" effect. This means that when the mouse cursor is over the button, the icon is colorized and when not, it is grey. This effect will not be present if you choose to use a program icon on the button. The button will still function to launch the program but the icon will be diplayed in a colorized state at all times and the icon may appear slightly ditorted due to resizing.

Version History

Version 1.6

Can now enter a URL in the "File to Launch" so that the added button will cause IE to navigate to that URL.

Version 1.5

Added the ability to automatically fill the "Menu Text" and "Menu Status Bar Text" field on the program's interface with whatever text is in the "Button Text" field by pressing "Ctrl + a" on the keyboard after typing in the "Button Text" field.

Added ability to drag files onto the "File to Launch" field to automatically fill in the files path and name.

Version 1.4

Fixed another bug that was causing runtime errors.

Version 1.3

Fixed a few bugs that were causing added buttons not to be displayed in some circumstances.

Version 1.2

Added ability to use program icons on buttons added to I.E.'s toolbar using the program.

Version 1.0

Initial Release

Error

There was an error launching either your web browser or your email program.

