

WIN Rx Help System



Welcome to WIN Rx !

Introduction

[What's A Virus ?](#)

[How is A Virus Activated ?](#)

[WIN Rx Main Feature](#)

Commands

[Running WIN Rx](#)

[File Menu](#)

[Options Menu](#)

[Stop! Menu](#)

[Help Menu](#)

[What to do if you find a virus ?](#)

Keyboard

[The WIN Rx Keys](#)

Virus Definitions List

[Show Virus Definitions](#)



WIN Rx is a new generation scanning software package that uses "DeepScan" to find all known viruses, including stealth viruses and viruses that modify themselves. By combining "DeepScan" and the Windows interface, WIN Rx offers the most powerful easy-to- use virus protection software available.

Trend Micro Devices Inc.

Trend Micro Devices, Inc. is incorporated under the laws of the State of California in 1988, specializing in the design, development, manufacture, and marketing of proprietary computer information security products worldwide.

Since then, Trend's group of software engineers have been dedicated to researching computer viruses and developing a unique anti-viral methodology.

Applying Advanced Intelligence technology and virus rule based methodology, Trend's anti-virus products have the ability of detecting known and unknown viruses by searching for virus characteristics and behaviors. This pioneering methodology has contributed to the company's credibility and success in providing PC-Cillin Virus Immune System to big corporations, banks and government organizations worldwide.

In 1991, Trend licensed to Intel a network virus management system for Novell file servers. The product, registered as LANProtect, is being marketed worldwide by Intel, except for the Pacific Rim which is being marketed by Trend.

Headquartered in North America, Trend maintains a full-time engineering and technical support staff with sales departments in the United States and the Far East.

Commands

Running WIN Rx

File Menu

Options Menu

Stop! Menu

Help Menu

What's A Virus ?

As the name implies, a virus is something that can enter your computer system and damage to your data. A virus does not spontaneously generate inside a computer; it must be designed, programmed, and distributed by someone.

A virus can only be "caught" through some kind of information transfer as a disk copy, file copy, file download, or even being connected to a network.

Since a computer would be useless without having access to outside information, every computer system is at some risk of being infected by a virus.

Naturally, viruses don't physically "exist" anywhere. They are simply "logical constructs" designed to replicate themselves and (usually) do some damage to your data. Viruses come in four categories, according to how (or where) they survive:

Boot Sector & Partition Area Viruses. These viruses hide themselves on the first sector of a disk. Because of the way DOS is structured, the virus gets loaded into memory at the same time that system files are loaded. This helps it avoid detection against prevention programs.

RAM Viruses hide in memory and act like parasites to the DOS interrupt functions. This virus literally takes control of low-level DOS functions.

Generic Viruses attack themselves to .COM, .EXE, or .SYS files and thus get executed each time the infected file is executed.

Stealth Viruses modify themselves to avoid detection by most anti-virus scanning programs. They may also be able to avoid DOS interrupt vectors. This is the newest and most difficult virus to detect.

Just like a biological virus, a computer virus must replicate itself to survive. So, every virus strain has some method of duplicating itself.

A virus may also be categorized by the type of damage it does. Some so-called "viruses" are actually harmless: they may only show a message on the screen or change the colors. A Malicious Virus, on the other hand, will destroy data once it is activated. It may format your hard drive or secretly change the values in a database file.

How is A Virus Activated ?

One characteristic of most successful viruses is that they do not immediately begin destroying data. This behavior, called dormancy is necessary for long-term survival. While these viruses are dormant, they scan events, such as the system date, or user behavior (such as the number of keystrokes entered) and then activate when certain conditions are met. This set of conditions is called the catalyst.

Avoiding the catalyst is not a good way to avoid a virus. Even if you manage to dodge it once, you will likely have the same conditions again in the future. You still need to find and remove the virus.

WIN Rx Main Feature

WIN Rx is a new generation scanning software package. It utilizes "DeepScan" to find all known viruses, including stealth viruses and viruses that modify themselves. Since WIN Rx does much more than simply compare files with known viruses, it offers the best scanning protection available today.

Features and Benefits

A True Windows Utility. This means that you can use other applications while WIN Rx is scanning.

Combats Known Viruses. WIN Rx can find over 1000 known viruses and strains.

Combats Stealth Viruses. WIN Rx's "DeepScan" capability performs a low-level search for malicious instructions that are typical of destructive viruses. Thus, even when a virus modifies itself, WIN Rx can often find it.

Custom Scanning. Flexible scanning options allow you to scan a file, directory, disk, or all volumes.

Stop Scan. Gives you flexibility in scanning.

Icon Update. WIN Rx updates its screen icon during scanning functions, letting you monitor the scan progress even while you are using other programs.

Report Application Launch. If a virus is found, WIN Rx will launch your favorite word processor with the virus report.

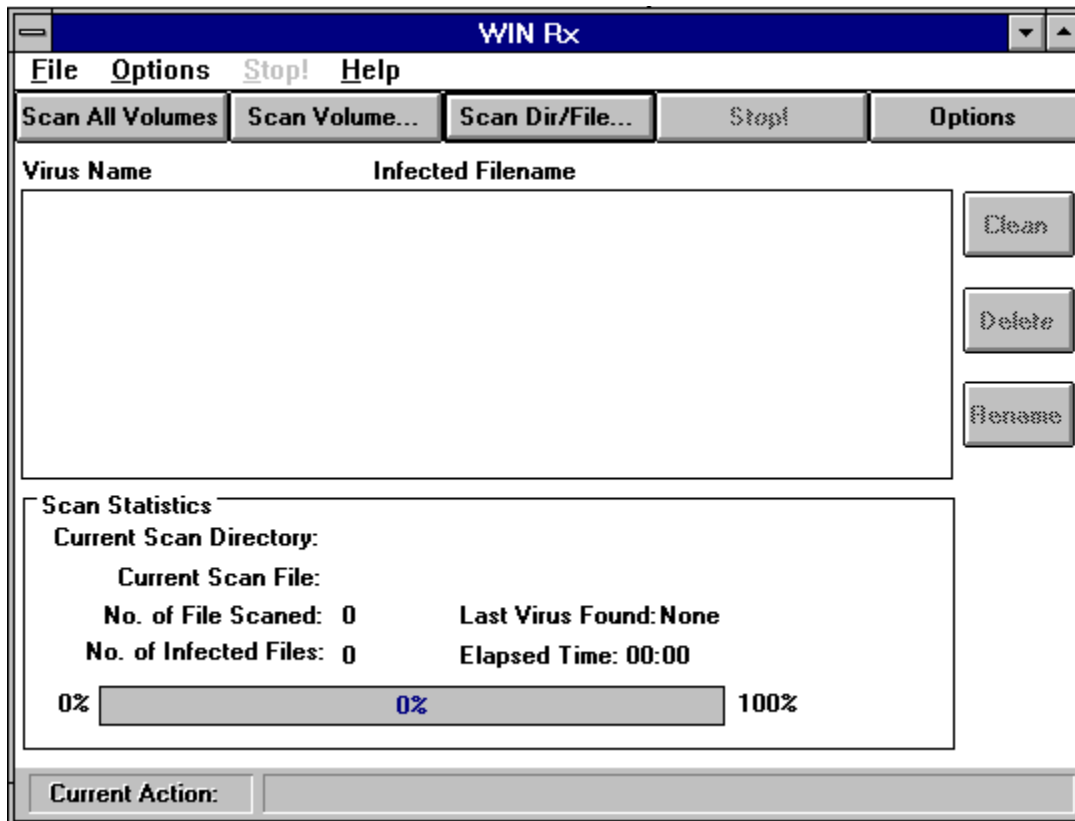
Help Function. A fully-integrated help utility makes WIN Rx easy to use, even if you are not a computer expert.

Cleaning Function. A "clean" function removes virus codes from infected files without harming the files.

Convenient Options. Through the Options menu, you can control scanning functions for subdirectories, the boot sector and partition area, and memory.

Running WIN Rx

After invoking WIN Rx, you will see the main window:



The main window is composed of five areas:

1. Menu Bar: File, Option, Stop.
2. Button Bar: Scan All Volumes, Scan Volume..., Scan Dir/File..., Stop!,Options.
3. Report Area: If any virus is found, the virus name and the infected filename will be displayed here.
4. Sterilize Functions: Three sterilize functions give you the option to Clean, Delete, or Rename the infected file.
5. Scan Statistics: This area gives you information about the scan process. The metering bar keeps you informed about the scan progress.

See also: [Scan All Volumes](#) [Scan Volumes](#) [Scan Dir/File](#)

File Menu

File gives you functions relating to your choice of scanning targets.

Scan All Volumes

Use this to scan all hard drives and any currently-inserted floppy disks.

Scan Volume

Use this to scan a single volume.

Scan Dir/File

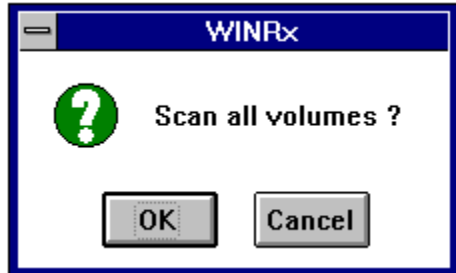
Use this to scan all the contents of a single directory or a single file.

Exit

This options exits WIN Rx

Scan All Volumes

When you first start WIN Rx, you will probably want to scan all of your hard drives and floppy disks. To do this, select the "Scan All Volumes" button on the Button Bar. You should see a dialog box like:



Select "OK." WIN Rx will then perform the following scans:

1. Memory Scan
2. Disk Scan
 - A. Boot Sector & Partition
 - B. Files

Disks are scanned in alphabetical order. The root directory is scanned first, then all subdirectories if the "Scan Subdirectories" option is selected.

As the scan progresses, you will see the Scan Meter advance from 0% to 100%. At 100%, the scan is complete and any viruses found will be displayed in the Report Area.

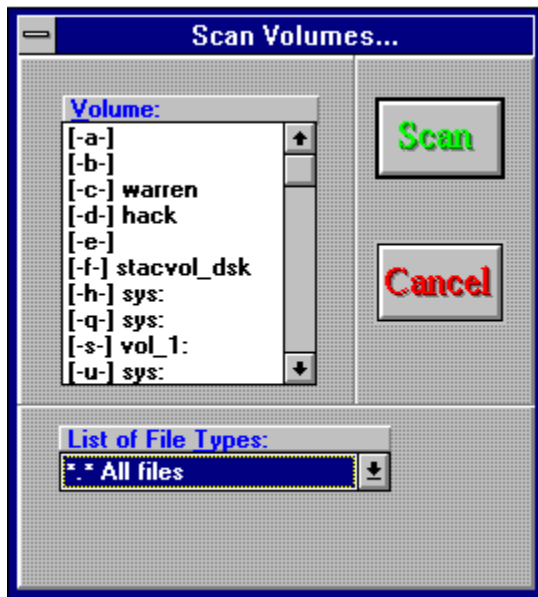
See also: [What to do if you find a virus ?](#)

Scan Volume

"Scan Volume..." performs the same scanning functions as "Scan All Volumes" while giving you more control over which disk drives are scanned.

Here is the procedure:

1. Select "Scan Volume..." You will see a dialog box like:

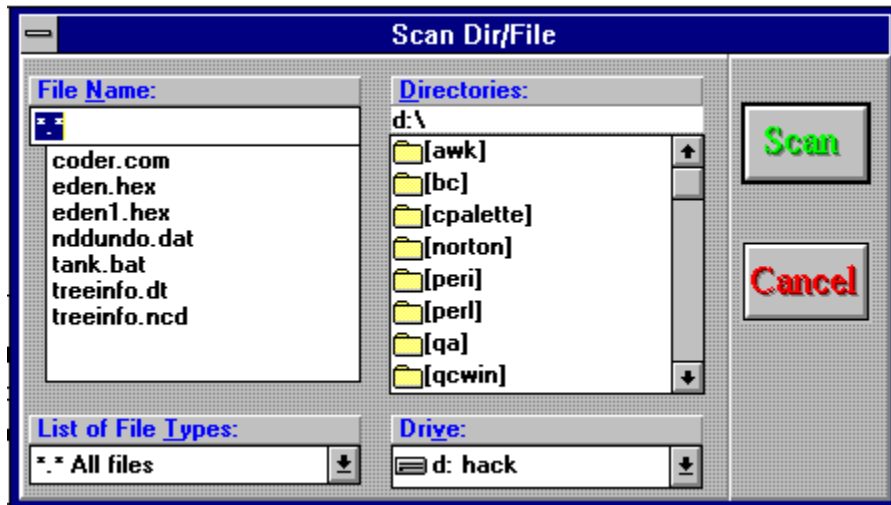


2. Highlight the volume you want to scan. The volume can be multiple selected.
3. Click the combobox of "List of File Types" to select the scanned file type.
4. Click "Scan." The volume or volume(s) you highlighted will now be scanned.
5. When the scanning is complete and any viruses found will be displayed in the Report Area.

See also: [What to do if you find a virus ?](#)

Scan Dir/File

Sometimes, you may only wish to scan a single directory or file.
When you select "Scan Dir/File..." a dialog box will appear like:



You may then select either a single file, directory, or even a single volume.
Click "Scan" The Dir/File/Volumn you highlighted will now be scanned.

See also: [What to do if you find a virus ?](#)

Options Menu

You may customize WIN Rx by altering these options:

Include Subdirectory

Default: SELECTED

If this option is selected, WIN Rx will scan all subdirectories of the volume or directory currently selected. Without this option, WIN Rx will only scan the files in the selected directory, ignoring any subdirectories.

Generally, the "Include Subdirectory" option should remain selected. This will assure a complete scan.

Scan Boot Sector & Partition Area

Default: SELECTED

When this option is selected, any SCAN will include a scan of the boot sector and partition area. Unless you have a specific reason for not wanting these areas scanned, leave this option selected.

For more information about the boot sector and partition area, refer to Chapter 1 of the manual.

Scan Memory

Default: SELECTED

Since a virus can exist in memory as well as on disk, it is wise to keep this option selected. When selected, WIN Rx will first scan memory for known virus patterns before scanning any volumes or files.

Create Scan Report / Report Filename

Default: SELECTED

Normally, WIN Rx creates a scan report if it finds at least one virus.

The location of this report is determined by the entry in the "Report File Name" box. To modify, specify a complete path and filename.

The file format is standard ASCII.

Launch Application / Application Name

Default: SELECTED / NOTEPAD.EXE

When WIN Rx finds at least one virus, it will launch a word processing application if this option is selected.

The default application is NOTEPAD, the Windows editor. A DOS-based word processor cannot be launched from WIN Rx, but any Windows-based program can.

Stops Menu

During any SCAN, the "Stop!" option will halt the scan and allow you to either cancel or continue. This is useful in cases where you may have accidentally selected the wrong volume to scan or when you need to interrupt the scan to do something else.

Help Menu

"Help" gives you the following menu:

Contents

Gives you a table of contents to program commands.

Search for Help On...

Lets you search for a help topic.

Show Virus Definitions

Presents a list of currently-known viruses.

How to Use Help

In case you have trouble using Help.

What to do if you find a virus ?

Once you find a virus, sterilizing it (making it harmless) is a simple procedure. You have three options, and all of them render the virus harmless.

Clean

"Clean" removes only the virus from the infected file, leaving the file intact. Normally, this will allow you to continue using the previously-infected file.

Delete

"Delete" removes the entire file from your disk. The virus will be gone, but you will also lose the infected file.

Rename

"Rename" allows you to change the filename of the infected file. Since only .COM and .EXE files are normally executed, changing the filename to something else (such as .VIR) will effectively isolate the virus from your system.

The recommended sterilization technique is to delete the infected file and replace it with an uninfected backup copy. For more on sterilization strategy, see Appendix C in the manual.

The WIN Rx Dialog Keys

Key(s)	Function
TAB	Moves from field to field (left to right and top to bottom).
SHIFT+TAB	Moves from field to field in reverse order.
ALT+letter	Moves to the option or group whose underlined letter matches the one you type.
DIRECTION key	Moves from option to option within a group of options.
ENTER	Executes a command button. Or, chooses the selected item in a list box and executes the command.
ESC	Closes a dialog box without completing the command. (Same as Cancel)
ALT+DOWN ARROW	Opens a drop-down list box.
ALT+UP or DOWN ARROW	Selects item in a drop-down list box.
SPACEBAR	Select/Cancels an item in a list box. Selects or clears a check box.

Virus Definitions List

Boot Viruses :

0. Stoned	1. Stoned-1	2. Disk_Killer
3. Air_Cop	4. Copy_Lock	5. (c)Brain
6. Music_Bug	7. Invader	8. Invader-1
9. Josh	10. Ping_Pong	11. Japan
12. EDV	13. Michelangelo	14. Filler
15. Microbes	16. LBC	17. Tequila
18. Flip	19. 1253	20. 3445
21. Bloody	22. Israeli	23. Ohio
24. Pentagon	25. Yale	26. Trkswap
27. Denzuk	28. Denzuk-1	29. Typo
30. Anthrax	31. Form	32. PrtScr
33. Spantroj	34. Stoned-2	35. KeyDrop
36. KeyDrop-1	37. Stoned-3	38. Fish
39. Yonyu	40. Azusa	41. Ghost
42. Crazy	43. Alameda	44. DB-29
45. Generic		

File Viruses :

0. JERUSALEM-3	1. JERU-3-2	2. JERU-5-1
3. INVADER-2	4. PARIS-1	5. AKUKU-1
6. AUSTRALIAN-1	7. POSSESSED-4	8. IDLE
9. LIBERTY-1	10. WOLF_MAN	11. NINA-1
12. CHEEBA	13. EINSTEIN	14. AMOEBA-2
15. JERUSALEM-6	16. JULY_13TH-1	17. V696
18. 3445-1	19. U696	20. SENTINEL-B.0
21. USSR-696	22. KLAEREN-1	23. 1030
24. COSSIGA	25. DAVIS	26. VDEFEND
27. FLASH	28. BLOOD	29. JULY_13TH
30. I-F-1	31. KIT-1	32. BAD_BOY
33. DIR	34. SVIR-1	35. SEPTEMBER_18TH
36. 923-1	37. TROJAN-17	38. POSSESS
39. MUMMY	40. VT-4	41. 1992-1
42. FICH	43. SQUEAKER-1	44. TOKYO
45. MIKY-1	46. CANCER	47. CATMAN
48. VACSINA-3	49. DESTRUCTOR	50. PCV-1
51. 1030-1	52. FEIST-1	53. MOCTEZUMA
54. BLJEC	55. 512-2	56. DARK_AVG-2
57. DARK_AVG-4	58. VT-5	59. MIX1
60. ARMAGEDON-3	61. MIR-2	62. JD
63. SMAL-114	64. SMAL-118	65. SMAL-122
66. SMAL-145	67. ARMAGEDON-4	68. 570
69. MIRROR	70. CRASH	71. NINA
72. BEBE	73. STAR_DOT	74. AP-1
75. TERROR-1	76. S143	77. SATURDAY_14TH
78. SATURDAY_14TH-1	79. 1705	80. ZK-900-1
81. V200	82. MOSQ	83. ELIZA
84. FGT	85. KALAH	86. ZMT-262
87. ZMT-365	88. SIS-3	89. SIS-5
90. SIS-1	91. TONY	92. MPC
93. FAMR	94. INTRUDER	95. TENBYTES
96. LIB1172	97. MIX2-1	98. SENT-1
99. SENTINEL	100. BCV	101. RMIT
102. RMIT-1	103. LEPROSY3	104. VT-6
105. LPTEST	106. SHAKE-1	107. TERROR-2
108. POSSESSED	109. POSSESSED-1	110. ICELANDIC-3
111. MIX1-1	112. I-F	113. 1244-1
114. RED_9	115. HALLOECHEN-1	116. VCOMM
117. 1971	118. DROPPER-2	119. DARTH_VADER
120. 268_PLUS	121. VORONEZH	122. 1992
123. GOT-YOU	124. DADA	125. QUIET
126. SADIST	127. CANCER-1	128. DEFINE

129.ANTHRAX	130.405	131.AIDS-2
132.SENTINEL-BCV-1	133.7808	134.KAMIKAZE
135.KAMIKAZE-1	136.SCORPIO	137.JOKER
138.HALLOWEEN	139.TROJAN	140.NICE_DAY_T.
141.TAIWAN-1	142.ARMAGEDON-5	143.GERGANA
144.GERGANA-1	145.GERGANA-2	146.GERGANA-3
147.BEST_WISHES-1	148.TRAVELLER-1	149.FUNE-921
150.1963	151.337	152.ARMAGEDON-2
153.WARRIOR	154.DARTH	155.512
156.SPYER-1	157.GP1/NOVELL	158.370-B
159.COM	160.CINDERELLA	161.P-45
162.64	163.ADA	164.MICRO29
165.TAIWAN-3	166.FELLOWSHIP	167.PITER
168.SPARSE	169.BURGER_542	170.BURGER_560
171.BURGER_560-1	172.BURGER_560-2	173.BURGER_560-3
174.BURGER_560-4	175.BURGER_560-5	176.BURGER_560-6
177.BURGER_560-7	178.BLACK_MONDAY	179.BOYS
180.CREEPER	181.PIRATE	182.FUTHARK
183.ERKLE	184.LOCKUP	185.NUKE
186.THEloader	187.1247	188.BLJEC_3
189.LOVECHILD	190.CHEMIST	191.KU-448
192.PREGNANT	193.TETNUS	194.IB
195.IB-1	196.IB-2	197.DROPPER
198.DROPPER-1	199.SENTINEL-BCV	200.WWT
201.WWT-1	202.MINIMAL-45	203.DEMON
204.INVOL	205.POSSESSED-2	206.YUKON
207.MACHO-1	208.MACHO-2	209.PCV
210.COOKIE	211.HARY	212.MUNICH
213.VIRDEM	214.DIR-1	215.FAM3
216.V600	217.MUTANT	218.MUTANT-1
219.MUTANT-3	220.512-1	221.512-3
222.109	223.HERE-1	224.HERE-394
225.2560-1	226.CHEEBA-1	227.CHEEBA-2
228.VT-8	229.LABEL	230.ALFA-4
231.MANTA	232.MUMMY-1	233.XPEH-2
234.XPEH3840-1	235.VIRUS_1726	236.SUNDAY-5
237.SUNDAY	238.YANKEE-1	239.YANKEE-3
240.YANKEE-5	241.DATACRIME-1	242.651-1
243.V2000-1	244.LIBERTY-3	245.PERFUME
246.SHAKE	247.RTINY	248.VACSINA-1
249.VICTOR-1	250.1024-1	251.SORRY
252.SLOW	253.PERTORIA	254.DARK_AVG-1
255.R1480-1	256.2144-1	257.SVERDLOV-1
258.1689-1	259.MIR-1	260.KEMEROVO
261.HYMN-1	262.BEST_WISHES-3	263.948-1
264.905	265.644	266.CRASH-2
267.ALFA	268.MG	269.MG-1
270.MG-2	271.MG-3	272.MG-4
273.2100-1	274.VIPER	275.VIPER-1
276.VIPER-2	277.VIPER-3	278.GUPPY-1
279.BAN	280.CRAZY	281.GOL
282.HORSE-2	283.HORSE-3	284.HORSE-4
285.HORSE-6	286.HORSE-10	287.LUC-1
288.MANNEQUIN-1	289.SADDAM	290.SADDAM-1
291.BROTHERS	292.855-1	293.DARTH-1
294.DARTH-3	295.DARTH-4	296.IDLE-1
297.DATALOCK-1	298.ENIGMA	299.DO_NOTHING
300.555-1	301.PLAGUE	302.SVC_3-2
303.SVC_2-1	304.SVC_3	305.GLISS
306.DAMAGE_B.0	307.V82-1	308.JERK
309.DAVID	310.2480	311.2480-1
312.MUMMY-2	313.CRJ	314.VORONEZH-1
315.FUNE-921-1	316.XPEH-1	317.XPEH-5
318.1376-1	319.BADSEC	320.GOCHA-1
321.E92	322.GRAPJE	323.IMP
324.GROWING BLOCK	325.HAFEN	326.KEMEROV
327.KEMEROV-1	328.ZARAGOZA-1	329.ZMT-252
330.XABARAS	331.SMAL-123	332.REDX-1
333.SCREAM-1	334.SCREAM-3	335.SURRENDER-1
336.MSTU-1	337.MALAGA-1	338.ONTARIO-2

339.PEACH-1	340.FIL	341.BUSTED
342.FEAR	343.UNK	344.UNK-1
345.SISTOR	346.SQUAWK	347.VIRDEMO-1
348.ILL	349.PI PI	350.PI PI-1
351.AIDS	352.AIDS-1	353.600
354.SYSMSDOS	355.INVADER	356.ALFA-3
357.KIEV	358.CD-1	359.SENTINEL-1
360.TUM5	361.WHALE_24	362.MPS
363.NUMBER_ONE	364.NUMBER_ONE-1	365.NUMBER_ONE-2
366.MANTA-1	367.XPEH-3	368.XPEH3840
369.BURGHOFER	370.R-10	371.JOKE
372.MARAUDER	373.PLASTIQUE-P	374.1530
375.1530-1	376.FAM3-1	377.TRACEBACK
378.707	379.USSR-516-1	380.CD
381.1241	382.1452	383.ALABAMA
384.RED_9-1	385.SUNDAY-1	386.SUNDAY-2
387.SUNDAY-3	388.SUNDAY-4	389.SUNDAY-6
390.YANKEE	391.YANKEE-2	392.YANKEE-4
393.VIENNA	394.VIENNA-1	395.VIENNA-3
396.VIENNA-5	397.VIENNA-6	398.VIENNA-7
399.VIENNA-9	400.W13	401.W13-1
402.4096	403.4096-1	404.AMBULANCE
405.AMOEBA	406.AMOEBA-1	407.ARMAGEDON-1
408.ARMAGEDON	409.CASCADE	410.CASCADE-I
411.DATACRIME	412.DATACRIME-3	413.DATACRIME-2
414.DBASE	415.MIX2	416.DEVIL'S_DANCE
417.SOLANO	418.SOLANO-1	419.651
420.V2000	421.FU_MANCHU	422.HALLOECHEN
423.JERUSALEM	424.JERU-3	425.JERU-5
426.JERUSALEM-8	427.JERUSALEM-1	428.Jeru-A
429.JOJO	430.KENNEDY	431.LEHIGH
432.MURPHY	433.MURPHY-1	434.MURPHY-2
435.MURPHY-3	436.MURPHY-4	437.OROPAX
438.SHAKE-2	439.SOUTH_AFRICAN	440.SOUTH_AFRICAN416
441.SPANISH	442.SYLVIA	443.SYLVIA-1
444.TINY	445.TINY-133	446.TINY-134
447.TINY-1	448.RTINY-1	449.RTINY-2
450.TYPO	451.VACSINA	452.VACSINA-2
453.VACSINA-4	454.VACSINA_CONT	455.VIRUS-90
456.VIRUS-90-1	457.VP-1	458.ZEROBUG-1
459.VICTOR	460.VHP	461.VHP-2
462.3012	463.1008	464.1024
465.VIRUS101	466.VALENTINE	467.FLASH-1
468.BENNY	469.FISH2	470.DARK_AVG
471.DARK_AVG-3	472.RCE1049	473.2144
474.SVERDLOV	475.1689	476.U492
477.830	478.MIR	479.HYMN
480.FUCK	481.BEST_WISHES-2	482.BEST_WISHES
483.ATTENT	484.948	485.711
486.CRASH-1	487.DOTEATER	488.583
489.VC0016	490.217	491.ALFA-1
492.PARITY	493.DESTRUCTOR-1	494.JUSTICE
495.MGTU	496.TP23VIR	497.TP24VIR
498.TP33VIR	499.TP34VIR	500.TP38VIR
501.TP39VIR	502.TP46VIR	503.V1600
504.MONXLA	505.MONXLA-1	506.S-9
507.POLISH	508.POLISH-1	509.POLIMER
510.RAUBKOPI	511.FINGERS	512.P-217
513.TESTER	514.BLACK_MONDAY-1	515.2100
516.P1	517.P1-4	518.P1-1
519.P1-3	520.P1-2	521.CASPER
522.CASPER-2	523.CASPER-1	524.CASPER-3
525.CASPER-4	526.WISC	527.GUPPY
528.TERMINATE	529.PIR	530.AP
531.ONTARIO	532.1253	533.PARIS
534.PARIS-2	535.NOMENKLATURA	536.144
537.2560	538.3445	539.733
540.AGI	541.AKUKU	542.KIT
543.ANTHRAX-1	544.PEST	545.PEST-1
546.PEST-2	547.AR	548.BLOOD-1

549.CARIOCA	550.CARIOCA-1	551.CRAZY-1
552.SHADOW	553.FUNC	554.HAPPY
555.HL	556.HL-1	557.HL-2
558.HORSE-1	559.HORSE-5	560.HORSE-7
561.HORSE-8	562.HORSE-9	563.LAZY
564.HYBRID	565.ICK	566.INC
567.LEECH	568.LC	569.LUC
570.MANNEQUIN	571.SADDAM-2	572.HUNT
573.SENT	574.SENTINEL-2	575.STAF
576.STR	577.CASINO	578.TELECOM
579.TELECOM-1	580.TELECOM-2	581.TELECOM-3
582.TUM2	583.TUMEN_V2.0	584.U311
585.453	586.WAR2	587.BROTHERS-1
588.DOODLE	589.855	590.FRI13
591.WHALE_6	592.1163	593.DARTH-2
594.DARTH-5	595.MENDOZA	596.SLAYER
597.LOZINSKY	598.DATALOCK	599.ENIGMA-1
600.1067	601.440	602.555
603.PHANTOM	604.MICRO-128	605.SVC_3-1
606.SVC_2	607.SPYER	608.5120
609.EVIL	610.SEMTEX	611.V82
612.V82-2	613.V82-3	614.777
615.923	616.KLAEREN	617.789
618.10_PAST_3	619.BACKTIME	620.MULE
621.V800	622.ETC	623.BOYS-1
624.V483	625.ZK-900	626.DAY_10
627.HERO	628.AT144.1	629.ZU1
630.ZU1-1	631.USSR-1049	632.POSSESSED-3
633.MANTA-2	634.BEEPER	635.NEWC
636.XPEH	637.XPEH-4	638.1308
639.1376	640.1385	641.1661
642.310	643.610	644.709
645.737	646.ALBANIA	647.ALBANIA-1
648.ALBANIA-2	649.ALBANIA-3	650.GOSIA
651.AUGUST16	652.BARCELON	653.BEWARE
654.BOB	655.BOB-1	656.CB-1530
657.CSL	658.CSL-1	659.CARA
660.CAZ	661.GOCHA	662.CRIMINAL
663.DM	664.DM-1	665.DEMOLITION
666.DODO	667.DODO-1	668.DOOM_II
669.E92-1	670.FEIST	671.SOCHA
672.SOV	673.TRAVELLER	674.GENERIC
675.GENERIC-2	676.HYDRA	677.JD-1
678.JAB	679.HERE	680.KBUG
681.KUZMITCH	682.ZARAGOZA	683.ZRK
684.ZRK-1	685.ZRK-3	686.WORDSWAP
687.SMAL-132	688.SIS-2	689.SIS-4
690.V914	691.R-11	692.RAGE-1
693.REDX	694.RELZFU	695.RESET
696.SX	697.SCREAM	698.SCREAM-2
699.SIS	700.SMILEY	701.SQUEAKER
702.STINK	703.SURRENDER	704.TIMID
705.TROI	706.TWIN-351	707.USSR-516
708.V-5	709.MSTU	710.MACEDONIA
711.MALAGA	712.MANOLA	713.MFACE
714.DLSU	715.MIKY	716.MONO
717.MULTI	718.NINES	719.NOMENKLATURA-1
720.NOMENKLATURA-2	721.ONTARIO-1	722.PC FLU
723.PARASITE_2B	724.PATHHUNT	725.RAGE
726.TVIR2	727.TVIR2-1	728.PARASITE
729.PARASITE-5	730.PARASITE-1	731.PARASITE-I
732.PARASITE-3	733.PARASITE-4	734.VDEFEND-1
735.FAMILY	736.UNKNOWN	737.MSHARK-S
738.Ps!ko	739.Ps!ko-1	740.Ps!ko-2
741.1530-2	742.E-92	743.EMF
744.GOMB	745.HEAR	746.HOLO
747.HOLO-1	748.FORGER	749.RKO
750.FEAR-1	751.FEAR-2	752.POEM
753.SBC	754.SQUAWK-1	755.OTTO
756.CRACKY	757.TIMID-1	758.TONY-1

759.VIRDEMO	760.644-1	761.VRST
762.SLAYER-1	763.1244	764.TRACEBACK-1
765.TRACEBACK-2	766.DOOM2	767.DOOM2-1
768.TAIWAN	769.TAIWAN-2	770.VIENNA-8
771.VIENNA-2	772.VIENNA-4	773.VIENNA-10
774.JERUSALEM-5	775.JERU-3-1	776.JERUSALEM-9
777.JERUSALEM-2	778.LIBERTY	779.LIBERTY-2
780.MACHO	781.PRUDENTS	782.SPANISH-1
783.SURIV	784.SURIV-1	785.TINY-2
786.TRACEBACK-3	787.TRACEBACK-4	788.ZEROBUG
789.VHP-1	790.VHP-3	791.VIRUS101-1
792.ITAVIR	793.PSQR	794.PIXEL
795.PIXEL_299	796.PIXEL_740	797.PIXEL_877
798.PIXEL-1	799.102	800.R1480
801.PS10	802.644-2	803.644-3
804.TERROR	805.TERROR-3	806.S847
807.903	808.AUSTRALIAN	809.DEI
810.FROGS	811.HORSE	812.LEECH-1
813.MUTANT-2	814.LPC	815.V752
816.SVIR	817.XA	818.PK
819.1575/1591	820.SATHANYC	821.ARGENTINA
822.CM	823.CHRISTMAS_TREE	824.FICH-1
825.GENERIC-1	826.HS	827.KARIN
828.LCV	829.ZRK-5	830.ZRK-2
831.ZRK-4	832.ZMT-252-1	833.XUXA
834.SOMETHING	835.PEACH	836.808
837.PARASITE-2	838.VENGANCE	839.KIIS
840.FAMR-1	841.FEIST-2	842.TIMID-2
843.CRACKY-1	844.THRASHER	845.MOCTEZUMA-1
846.ALFA-2	847.TOPO	848.2559
849.COPYRIGHT	850.INVADER-1	851.FU_MANCHU-1
852.JERU-3-3	853.JERU-3-4	854.JERUSALEM-4
855.JERUSALEM-7	856.JERUSALEM-PSQR	857.3012-1
858.SYSMSDOS-1	859.1971-1	860.MULE-1
861.RAT	862.64-1	863.TAIWAN4
864.ANT		