



Circular File

Version 1.0

[Introduction](#)

[Installation](#)

[Procedures](#)

[Menu Commands](#)

[Toolbar](#)

[History](#)

[Registration](#)

[Copyright](#)

Introduction

Circular File Version 1.0

Circular File is a drag and drop file deletion utility. It eases your file handling chores by allowing you to drag and drop your files to delete them. It also allows you to restore those files you mistakenly delete, even after you turn off the computer.

Some of Circular File's features:

- **Takes directories.** Circular File allows you to drag and drop directories. Many file deletion utilities do not allow directory deletion. Deleted directories may be fully restored like any file can.

- **Takes files from any drive.** Circular File allows you to delete files from floppies. Again, this is not allowed with many deletion utilities.

- **Takes multiple files with the same name.** With most file deletion utilities, if you drag "README.TXT" from one directory, and then drag "README.TXT" from a different directory, you'll get an error. Circular File will allow you to drag as many "README.TXT"s as you want from anywhere on the disk.

- **Supports sound.** Circular File allows you to assign a sound(Wav file) to the events dropping, deleting, and restoring.

- **Choose storing directory.** Circular File stores the files you drop onto it in a directory so that they can be restored. Some utilities call this directory "TRASHCAN" and put it in your root directory. With Circular File you can choose your own directory.

- **Toolbar.** Circular File has a convenient toolbar for easy access to Delete, Delete All, Restore, Restore All, and Help.

- **Status Bar.** Circular File has a status bar that tells you the number of files you have stored and the total size of those files. This information is also displayed when Circular File is in icon form.

- **Stay On Top.** An option that allows Circular File to remain visible at all times.

- **Delete On Drop.** If you do not wish to have Circular File store your dropped files then you can have them deleted as soon as you drop them, instead. Files deleted in this way can not be restored.

- **Prompt On Exit.** Normally when Circular File exits (normally or with Windows exiting) it will save all your files and they will be available the next time you run it. With this option you can have Circular File ask you if you would like to delete all the stored files when it exits.

For more information, see Procedures in the main menu.

Installation

Circular File should come with six files.

Circular.exe	Main executable
Circular.hlp	Help file
Circular.txt	Read me text file
Circ1.wav	Wav sound file
Circ2.wav	Wav sound file
Circ3.wav	Wav sound file

If you do not receive all of these files contact Independent Assemblies.

Put all the files into any directory making sure they are all in the same directory. Circular File will create **CIRCULAR.INI** when it first runs in the directory where **CIRCULAR.EXE** is located. Circular File will not write any other files to your disk and it will not alter your system ini files (**Win.ini**, **System.ini**, etc.).

Procedures

[Dragging and dropping files](#)

[Deleting files](#)

[Restoring files](#)

[Selecting files](#)

[Stay on top](#)

[Delete on drop](#)

[Prompt On Exit](#)

[Change the path](#)

[Changing sounds](#)

[Registering Circular File](#)

[Toolbar](#)

[Status Bar](#)

Menu Commands

[File Menu Commands](#)

[Options Menu Commands](#)

[Help Menu Commands](#)

Toolbar



Same as the menu item File|Delete



Same as the menu item File|Delete All



Same as the menu item File|Restore



Same as the menu item File|Restore All



Same as the menu item Help|Contents

History

Version 1.0 - March 15, 1993
Initial release

Registration

This fully functional copy of **Circular File** is distributed as shareware. If you decide to use it after the 21 day evaluation period you must register it. With registration you will receive your personal serial and registration number which will remove the registration reminder screen. You will also receive any minor upgrades(1.x) for free and the next major upgrade(2.0) for half price.

Registration for this version is: 10\$

Check or money order to: Keith Walton

Send to: 2712 O Street No 16
 Sacramento CA 95816

To print out this form select **File|Print Topic** from the pulldown menu.

Name:

Address:

City/State/Zip:

Age:

Sex: What do you like most about Circular File?:

What don't you like about Circular File?:

Comments:

Thank You for registering Circular File!

Copyright

Circular File Version 1.0

Circular File is copyright © 1992-1993 Independent Assemblies

License Agreement

You are licensed to:

- Use this Shareware software for a 21 day evaluation period.
- Make as many copies of this software and documentation as you wish.
- Give exact copies of the original to anyone.
- Distribute the software and documentation in its unmodified form via electronic means.
- There is no charge for any of the above.

You are prohibited from:

- Charging, or requesting donations, for any such copies, however made.
- Distributing the software and/or documentation with other products (commercial or otherwise) without prior written permission.

Unregistered use of Circular File after the 21-day evaluation period is in violation of federal copyright laws.

Circular File

Version 1.0 Copyright © 1992-1993 Independent Assemblies

Drag and Drop

Drag and Drop is one of the great features of **Windows 3.1** that makes file management so much easier. You simply drag a file from a server program such as **File Manager** to a client application such as **Notepad**. The client application then performs some action on the dropped file such as open it for viewing, as in **Notepad**. Circular File is a client application. It takes the files you drop onto it and stores them away.

First select the files and directories you wish to delete in **File Manager**. Directories must be highlighted in the same area as the files are listed(**File Manager** will not accept directories being dragged from the **Directory Tree** side). Multiple files and directories can be selected by holding down the **Control Key** while clicking on the various selections.

After you have selected the files you wish to delete, click and hold on one of the selected files. Now, while you continue to hold the button down, drag the mouse over either the Circular File window or icon and release the button. You have now deleted the selected files with **Drag and Drop**.

Deleting Files

When you Drag and Drop a file into Circular File, you are not really deleting it. It simply gets stored somewhere else so it is out of your way. To delete it, you must tell Circular File to do so.

If you wish to delete all of the files currently stored files, select File|Delete All from the menu or use the **Delete All** button on the toolbar. If you wish to delete only certain files, select the file or files (**Control+Click** for multiple selections) and select File|Delete from the menu or use the **Delete** button on the toolbar.

After deleting files in this way, they are permantly gone.

Restoring Files

Circular File can return files that you drag and drop onto it to their original location. If you wish to restore all currently stored files, select File|Restore All from the menu or use the **Restore All** button on the toolbar. If you wish to restore only certain files, select the file or files (**Control+Click** for multiple selections) and select File|Restore from the menu or the **Restore** button on the toolbar.

After restoring files, they may be used as normal and even re-stored in Circular file.

Independent Assemblies

2712 O Street No 16
Sacramento CA 95816

Voice	(916) 456-6049
BBS	(916) 758-0292 (Login:Independent Assemblies Password:User)
CompuServe	74650,223
InterNet	74650.223@compuserve.com
FidoNet	Windows Conference (Address to Jacob Ian Singer)

File Menu Commands

Delete

Delete the currently selected files.

Delete All

Delete all of the currently stored files.

Restore

Return the currently selected files to their original location

Restore All

Return all of the currently stored files to their original location

Exit

Exits Circular File

Help Menu Commands

Contents

Opens Circular File Help

Search for Help On...

Opens the Search dialog box of Circular File Help to allow you to search for a particular topic

How to Use Help

Opens a Help file with instructions for using **Windows Help**

About Circular File...

Opens the About dialog box with copyright and memory information

* Registration...

Opens the Registration dialog box to allow you to enter your registration number, serial number, and name.

*Note - Only visible when Circular File is not registered

Options Menu Commands

Stay On Top

Checked - Circular File's icon and window will remain visible at all times.

Unchecked - Circular File's icon and window will behave as normally

Delete On Drop

Checked - Circular File will immediately delete files instead of storing them

Unchecked - Circular File will store dropped files for possible later restoration

Prompt On Exit

Checked - Will ask you if you want to delete any stored files when you exit Circular File or when **Windows** exits.

Unchecked - Stored files will remain stored until you delete them

Sounds...

Opens the Sound dialog box to allow you to enter sounds for Drag and Drop, deleting, and restoring files.

Path...

Opens the Path Dialog box to allow you to change the path where Circular File stores dropped files.

Font...

Opens the Font Dialog box to allow you to change the font used in the main window.

Status Bar



The **Status Bar** is located at the bottom of the Circular File window. It shows the number of files you have stored and the total size of these files. When Circular File is iconized this same information will be listed under the icon.

Selecting Files

Single files can be selected in Circular File by single left clicking on them. Multiple files can be selected by holding down the **Control Key** and single left clicking on each file. A group of consecutive files can be selected by pressing and holding the left button on the first file and dragging down to the last file and then releasing. This can also be done by single left clicking on the first file and then pressing and holding the **Shift Key** and left clicking on the last file. After a group of files has been selected, you can use the **Control Key** method to add other files or remove single files from the group. You can also add a second set of consecutive files to the previously selected group by using the **Control Key** method to select the first file in the new group, and then pressing and holding both the **Shift** and **Control Keys** and single left clicking the last file in the new group.

Stay On Top

Since Circular File needs to be visible to drag and drop files onto it, it is best to have it remain permanently on top of other windows. This applies to both the window and the icon. To do this, select Options|Stay On Top from the menu if not already checked.

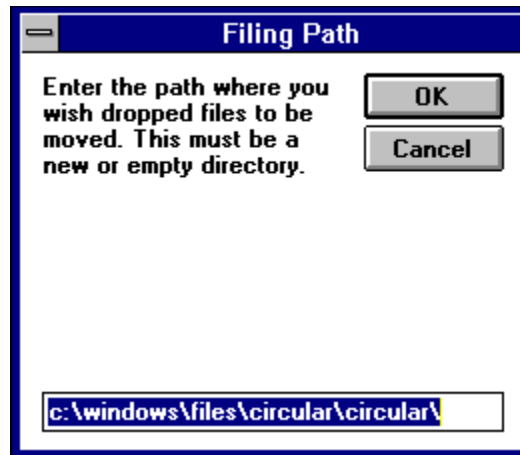
Delete On Drop

It may not always be necessary for you to store the files you drag and drop onto Circular File. In this case Circular File can still be a very useful tool in file management. It can simply delete all the files you drag and drop onto it immediately. Much easier than pressing the **Delete Key** and answering both prompts in **File Manager**. To set Circular File to act in this manner select Options|Delete On Drop from the menu if not already checked.

Prompt On Exit

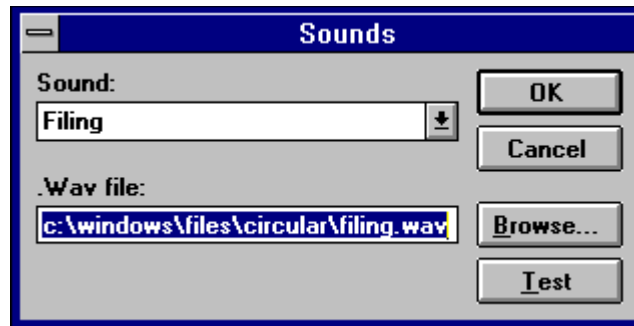
Normally when Circular File exits(either normally or with **Windows** exiting) it retains all of it's stored files as long as you do not delete them. The **Prompt On Exit** option will give you the option of deleting all of the stored files when you exit. Select Options|Prompt On Exit from the menu if it's not already checked for this option.

Change The Path



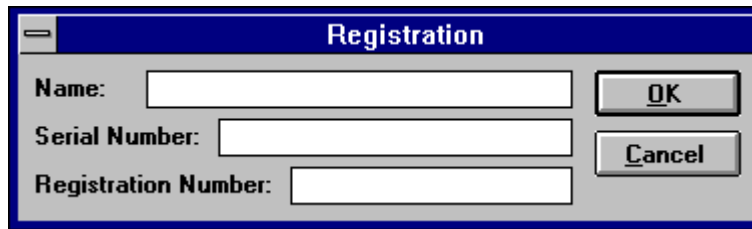
Circular File stores the files you drop onto it in a directory you choose. The default directory is called **CIRCULAR** and branches off the directory where **CIRCULAR.EXE** is located. To change this directory select Options|Path... from the menu. The directory you enter must be an empty one. Circular File will create it if it does not already exist.

Changing Sounds



Circular File lets you to assign sounds(wav files) to the events drag and drop, deleting, restoring. Circular File comes with three sound files (**CIRC1.WAV**, **CIRC2.WAV**, **CIRC3.WAV**), but you can use any .wav file you choose. Select Options|Sounds... from the menu. The **Sound:** dropdown list displays the action (Dropping, Deleting, or Restoring) and the **.Wav file:** textbox will display the sound for that action. To change a sound, select the action in the dropdown list and then enter the name of the sound file in the textbox. To search your drive for a sound file press the **Browse...** button. To listen to the sound entered in the textbox press the **T**est button. To make the changes permanent press the **O**K button, otherwise press the **C**ancel button.

Registering

A screenshot of a software registration dialog box. The dialog has a blue title bar with the word "Registration" in white. Below the title bar, there are three text input fields labeled "Name:", "Serial Number:", and "Registration Number:". To the right of these fields are two buttons: "OK" and "Cancel".

Registration	
Name:	<input type="text"/>
Serial Number:	<input type="text"/>
Registration Number:	<input type="text"/>
<input type="button" value="OK"/>	
<input type="button" value="Cancel"/>	

After you have registered your copy of Circular File you must enter your name, serial number, and registration number into the **Registration Dialog Box**. This will mark your copy with your name and serial number and remove the registration reminder dialog at the beginning.

Shareware

Shareware is a method of software distribution in which you get to try the software before you purchase it. After you evaluate the software you can either purchase it by sending if the requested fee, or you can erase it from your computer.

