



Labrador Retriever

Height: 54 to 62cm **Weight:** 25 to 34kg is considered ideal.

Origin: UK

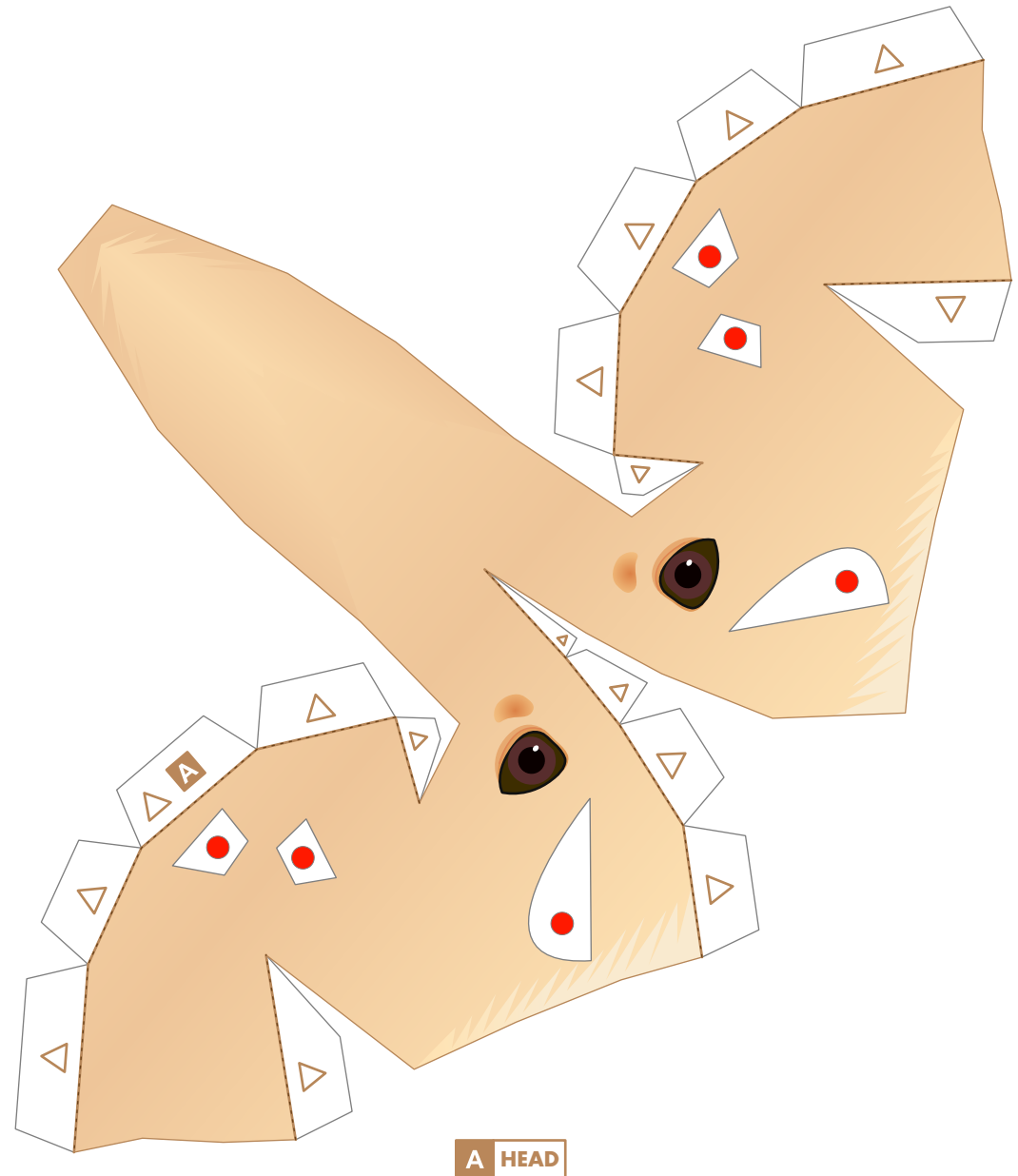
Temperament: Warm and friendly. Very affectionate.

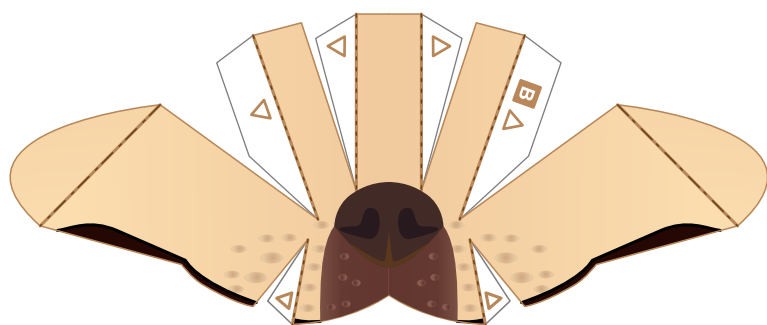
The Labrador Retriever is named after its original role as a 'retrieving' gun dog and the Labrador peninsula in Canada.

Some say that the ancestors of the breed were dogs who crossed over the Atlantic from Europe to Canada on fishing boats sometime in the 16th century and were eventually brought back to Britain sometime in the 19th century. Originally rather fierce, the breed was improved to make it obedient and easy to train.

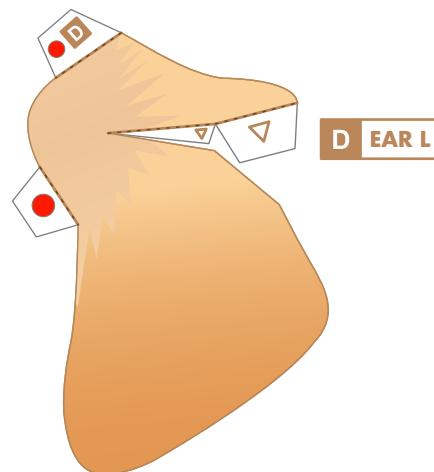
The Labrador has an otter-like tail and loves to swim and play in the water. They are loved by many as guide dogs for the blind, care dogs and rescue dogs and are also extremely popular as pets.

This Papercraft Labrador Retriever is about half the size of the real dog.

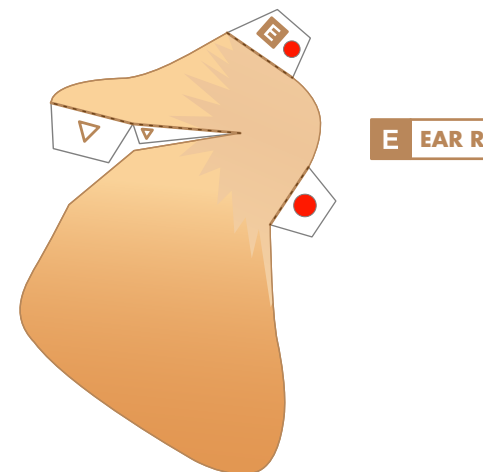




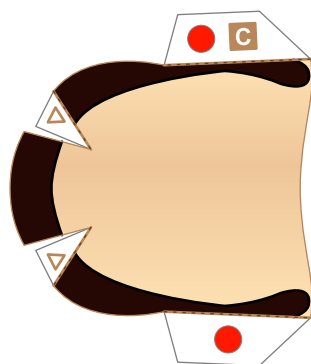
B MUZZLE 1



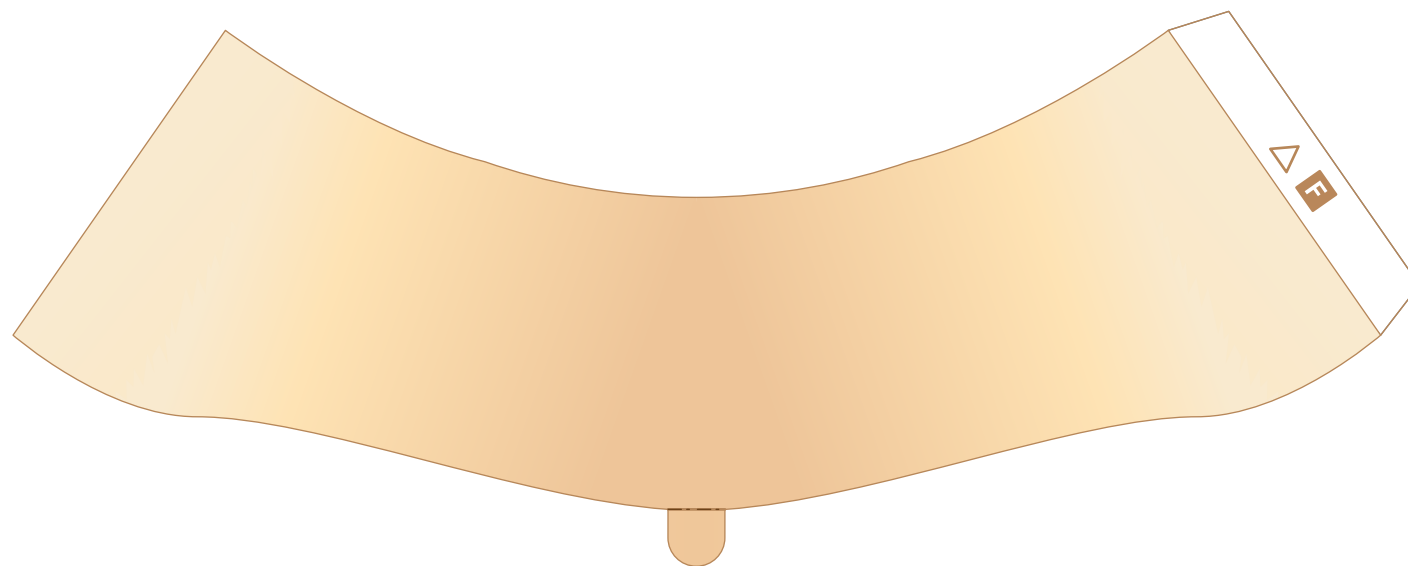
D EAR L



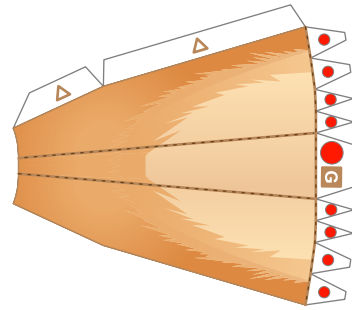
E EAR R



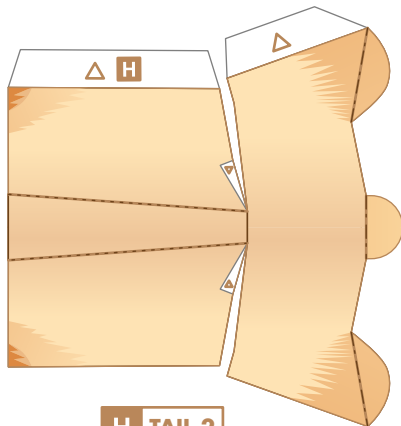
C MUZZLE 2



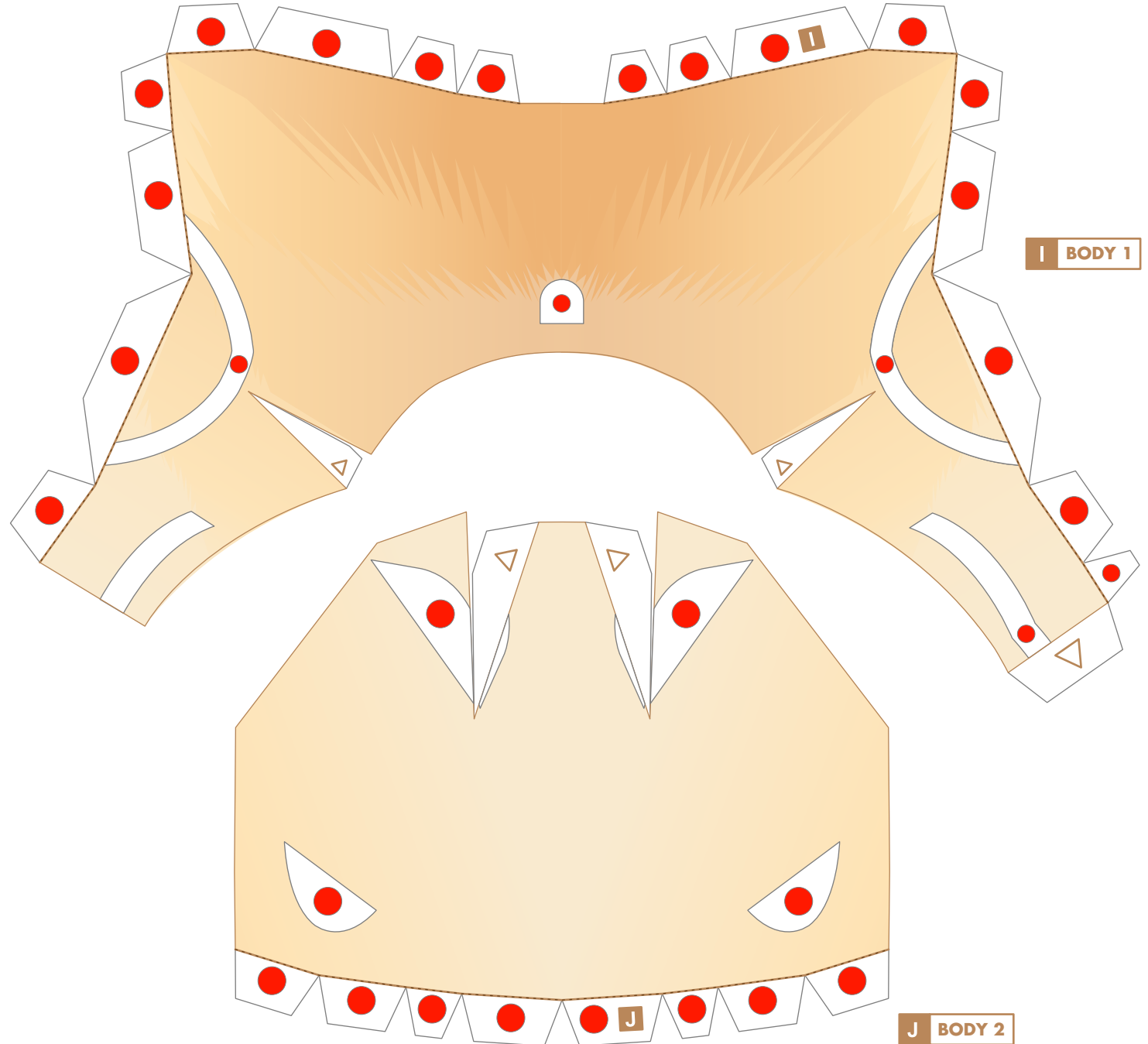
F NECK

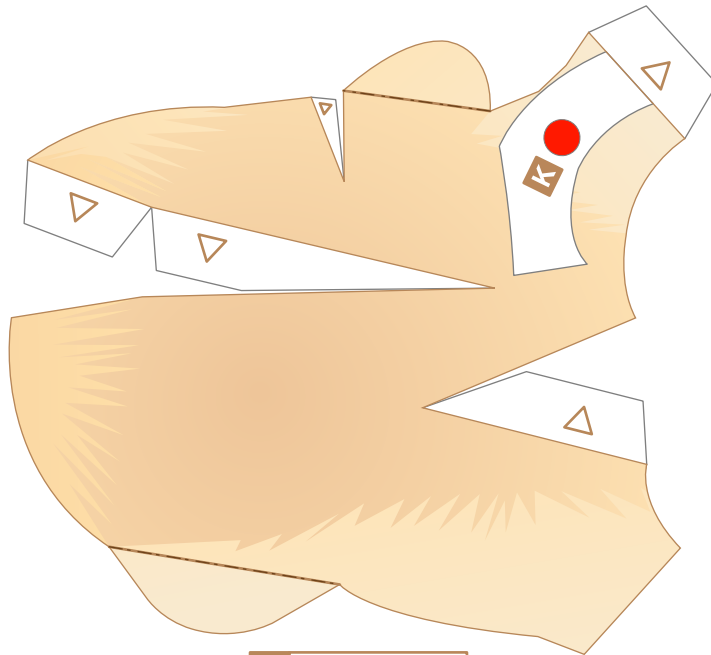


G TAIL 1

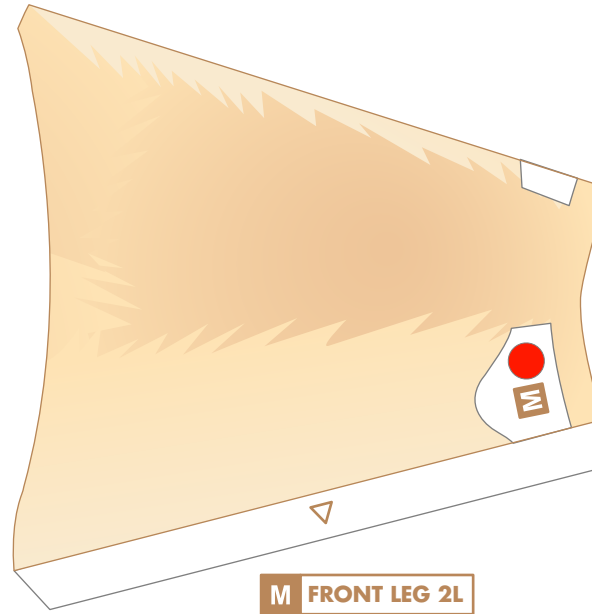


H TAIL 2

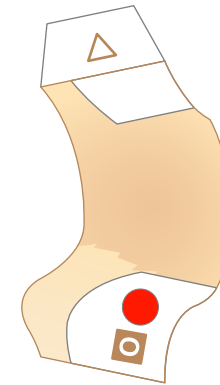




K FRONT LEG 1L



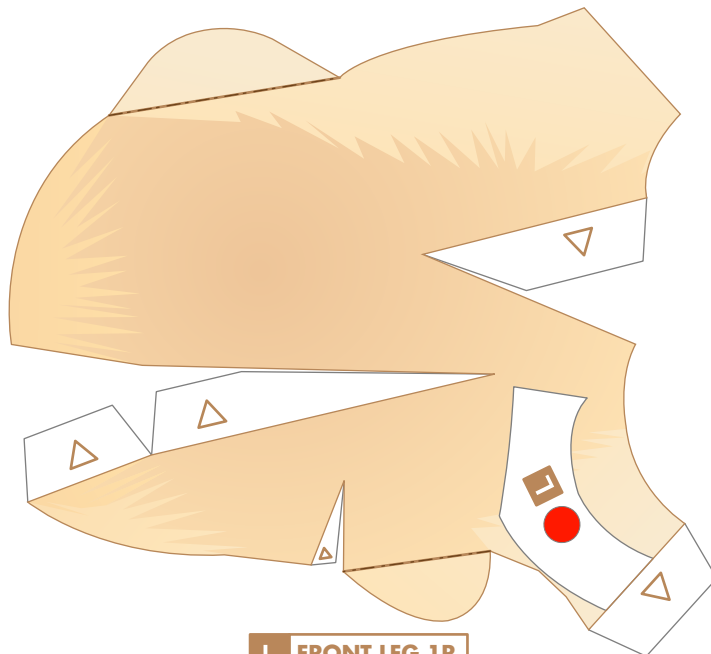
M FRONT LEG 2L



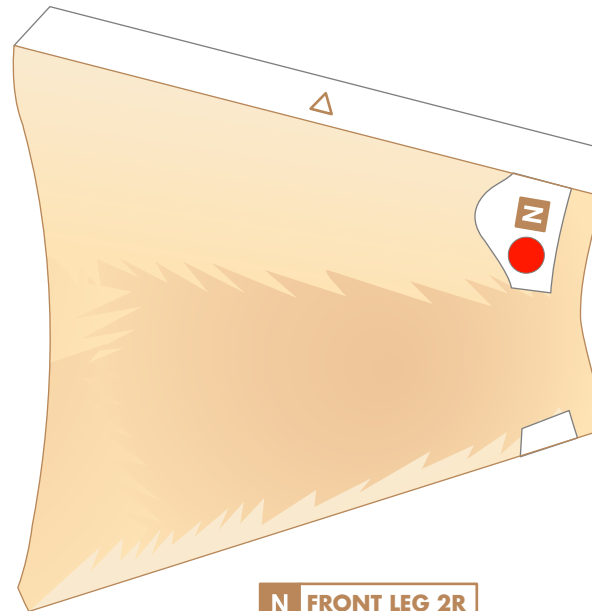
O FRONT LEG 3L



Q FRONT LEG 4L



L FRONT LEG 1R



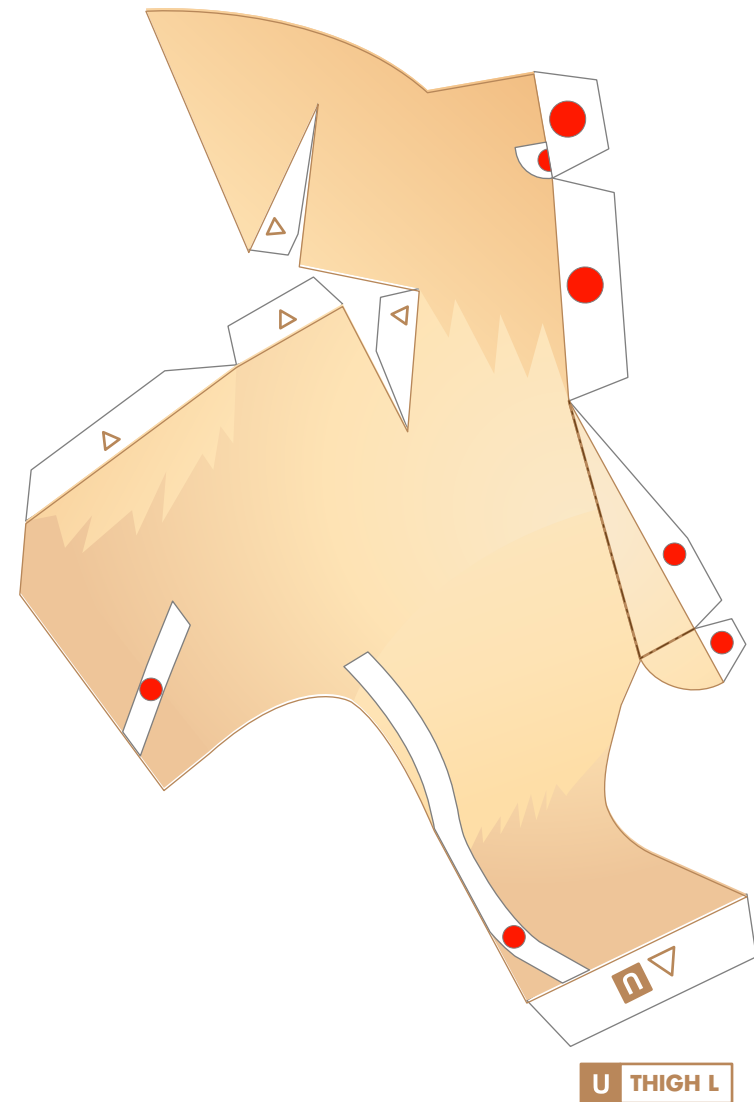
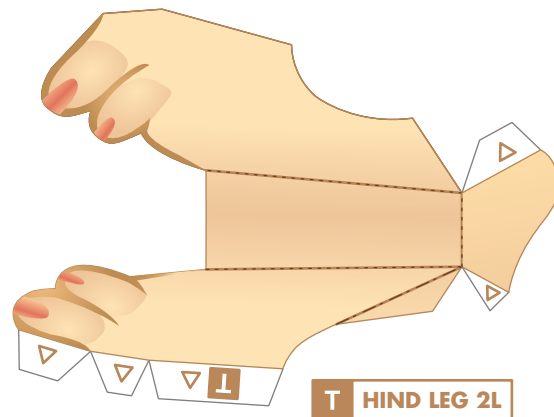
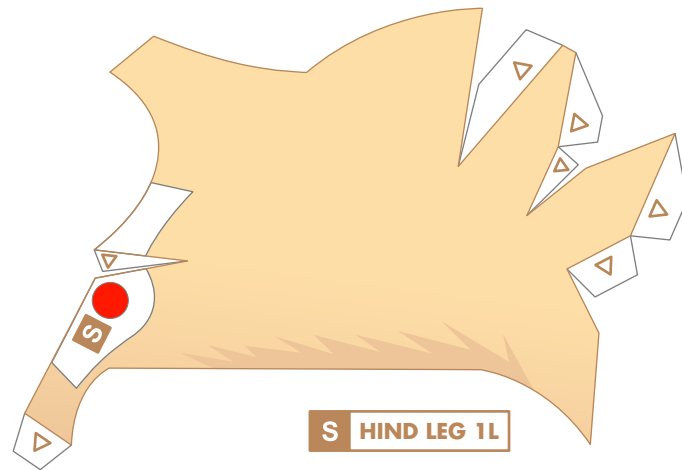
N FRONT LEG 2R

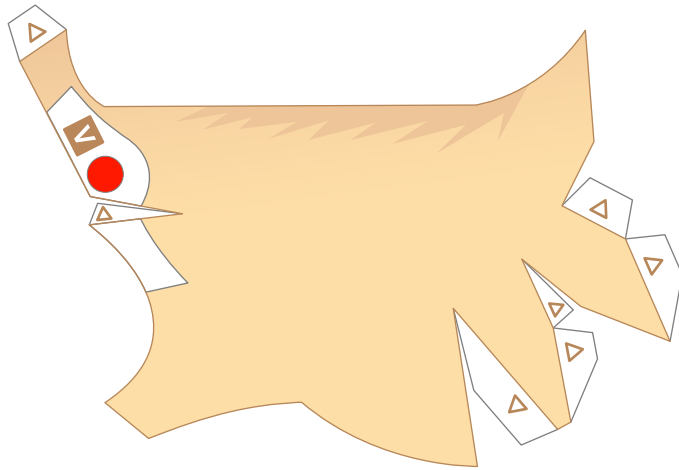


P FRONT LEG 3R

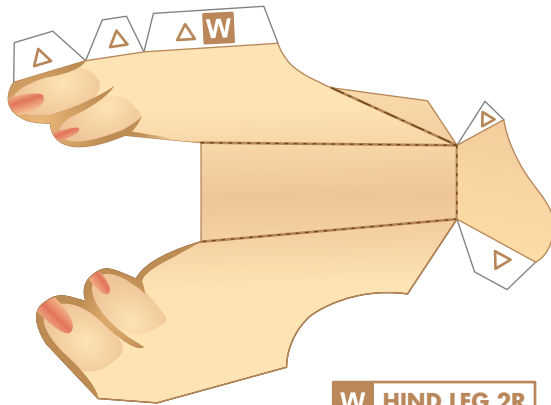


R FRONT LEG 4R

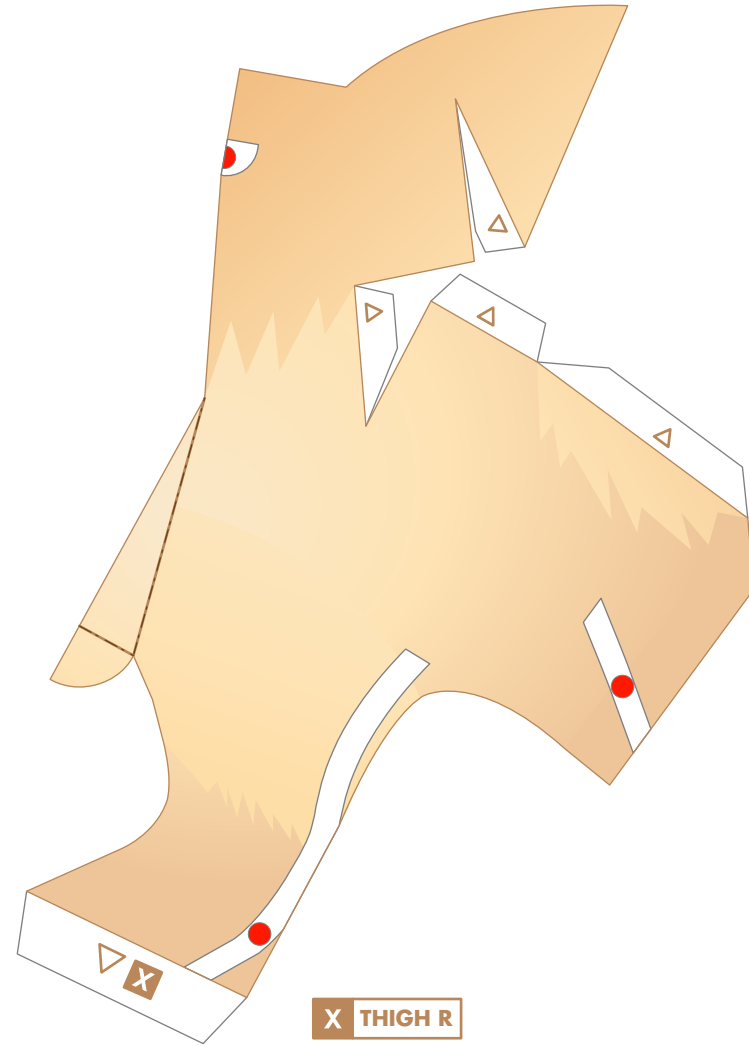




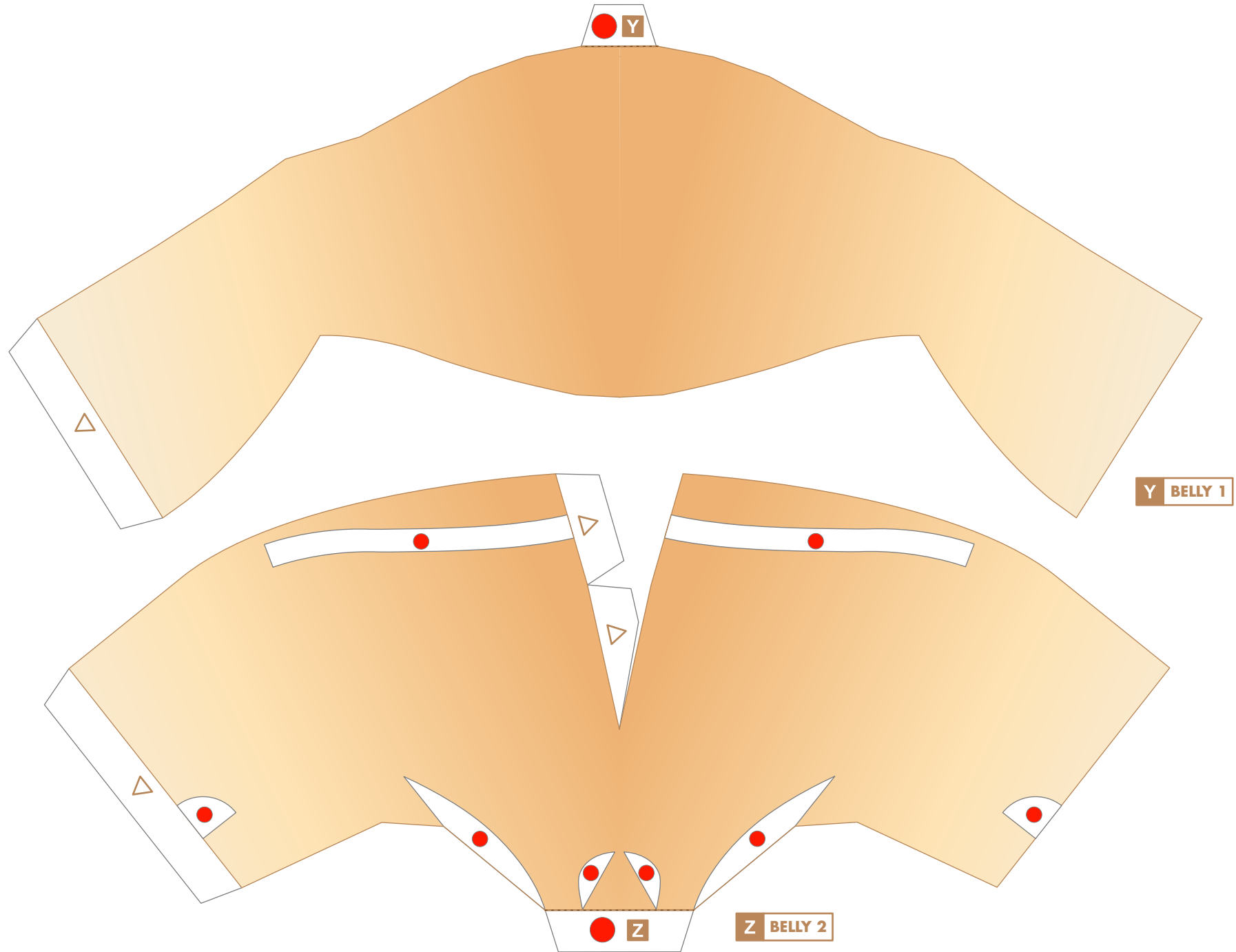
V HIND LEG 1R



W HIND LEG 2R



X THIGH R







Labrador Retriever

Height: 54 to 62cm **Weight:** 25 to 34kg is considered ideal.

Origin: UK

Temperament: Warm and friendly. Very affectionate.

The Labrador Retriever is named after its original role as a 'retrieving' gun dog and the Labrador peninsula in Canada.

Some say that the ancestors of the breed were dogs who crossed over the Atlantic from Europe to Canada on fishing boats sometime in the 16th century and were eventually brought back to Britain sometime in the 19th century. Originally rather fierce, the breed was improved to make it obedient and easy to train.

The Labrador has an otter-like tail and loves to swim and play in the water. They are loved by many as guide dogs for the blind, care dogs and rescue dogs and are also extremely popular as pets.

This Papercraft Labrador Retriever is about half the size of the real dog.

Assembly Instructions



----- Mountain fold



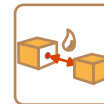
----- Valley fold



——— Cut line



△ A triangle mark indicates a glue tab.



● A red dot indicates a glue tab to be used to glue to another part.

Tools and materials



Scissors, straightedge, glue (We recommend craft glue), a round stick such as a pencil (used for applying curvature to paper).

Assembly tip



Crease all mountain folds and valley folds before gluing, and apply curvature to curved portions.

Caution

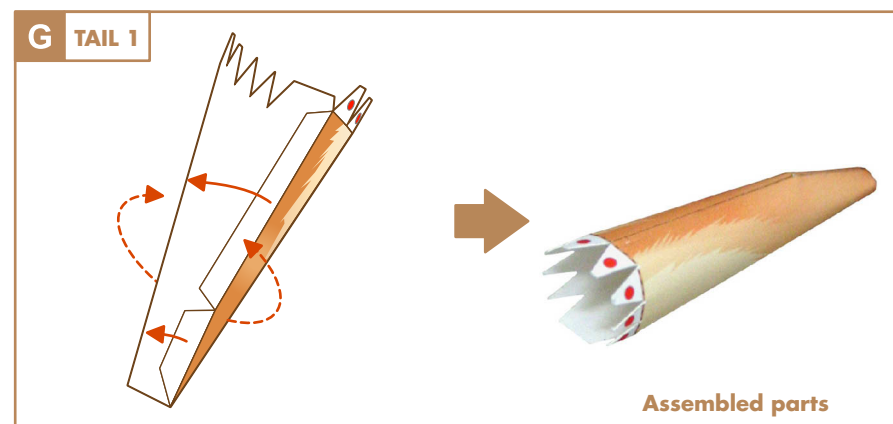
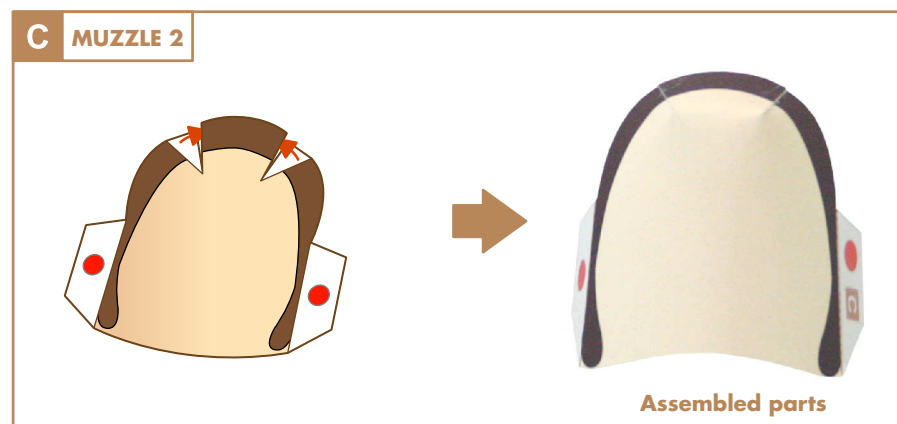
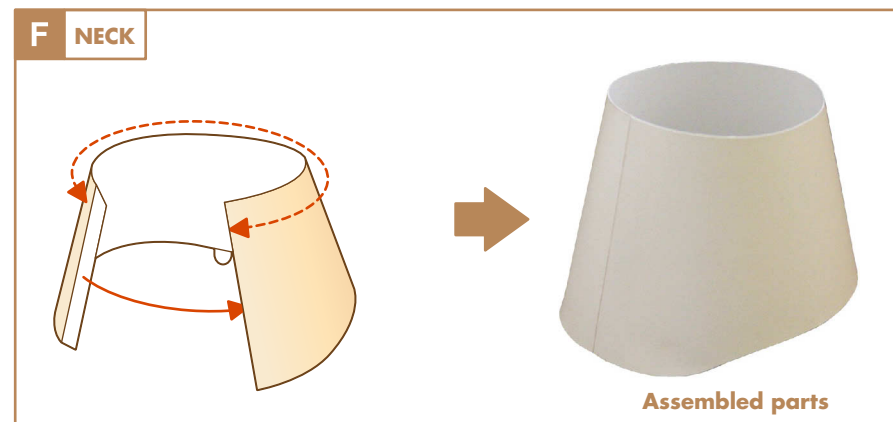
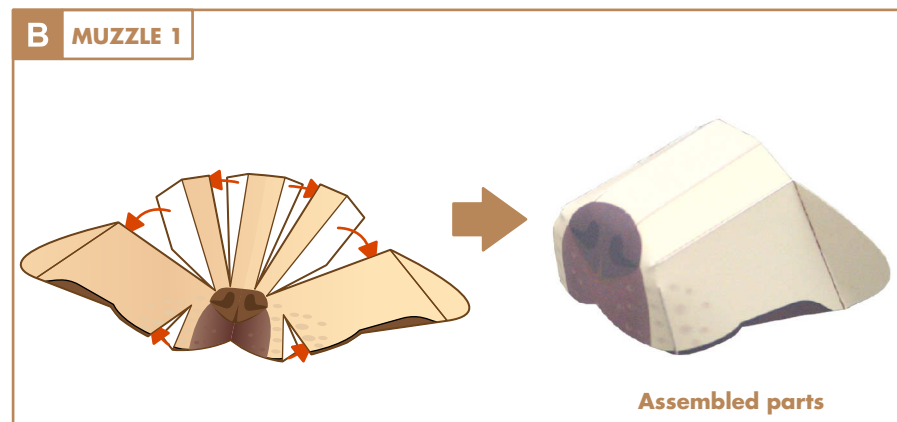
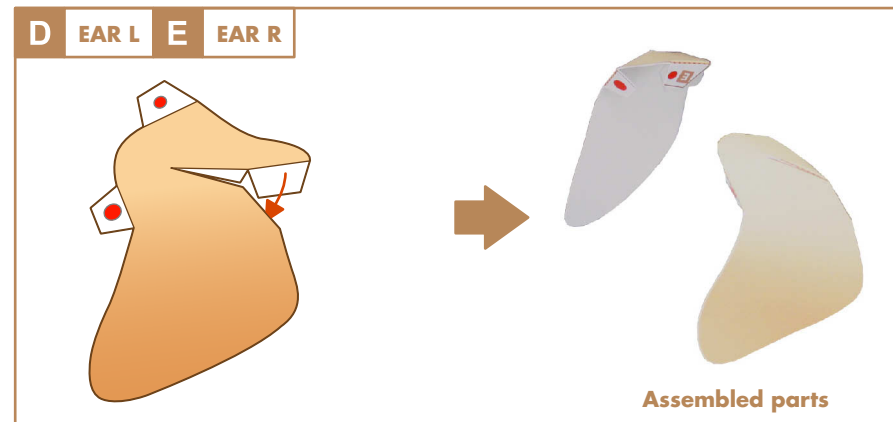
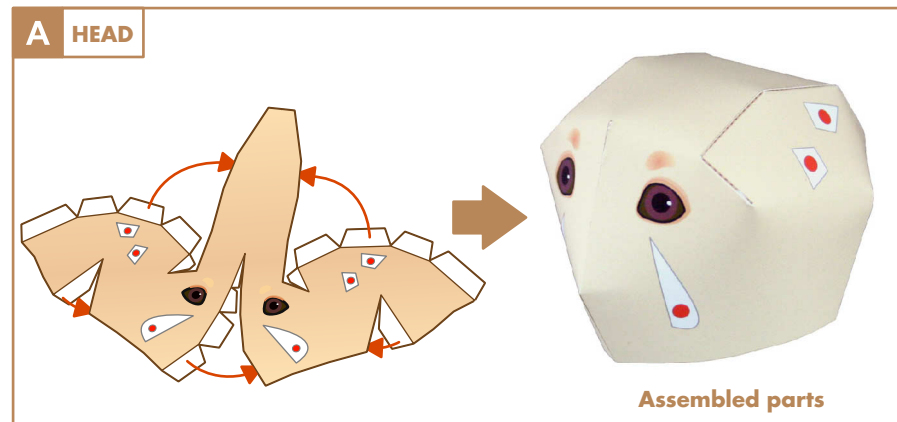


Keep glue away from small children.

Labrador Retriever : Assembly directions

 Parts to assemble ① 

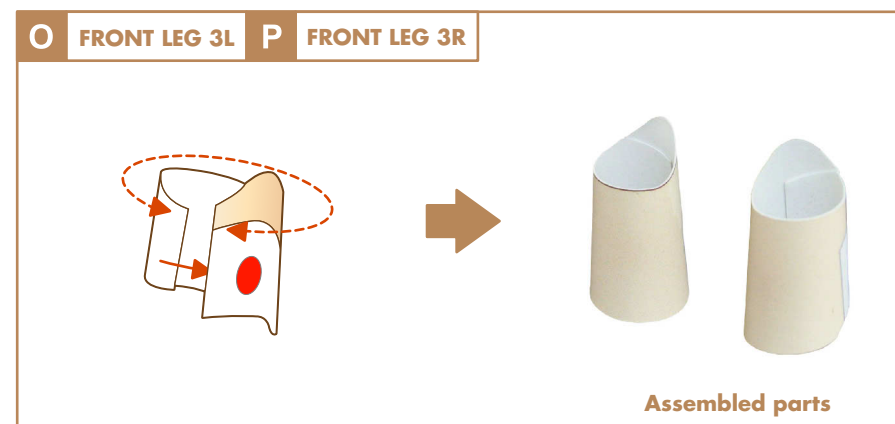
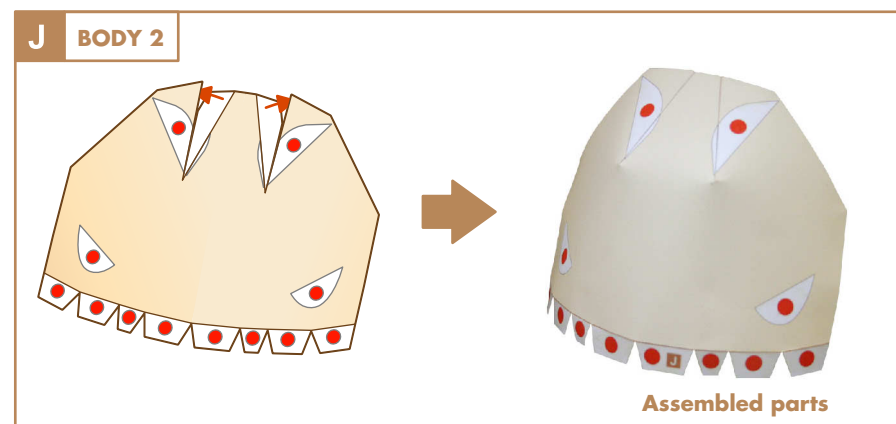
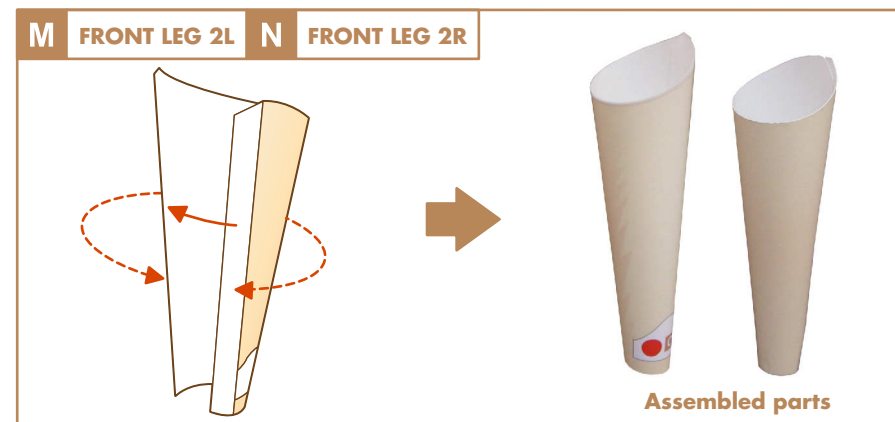
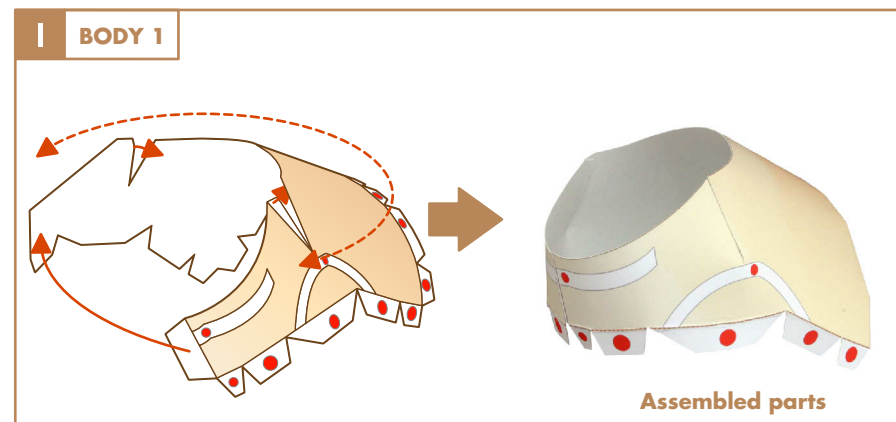
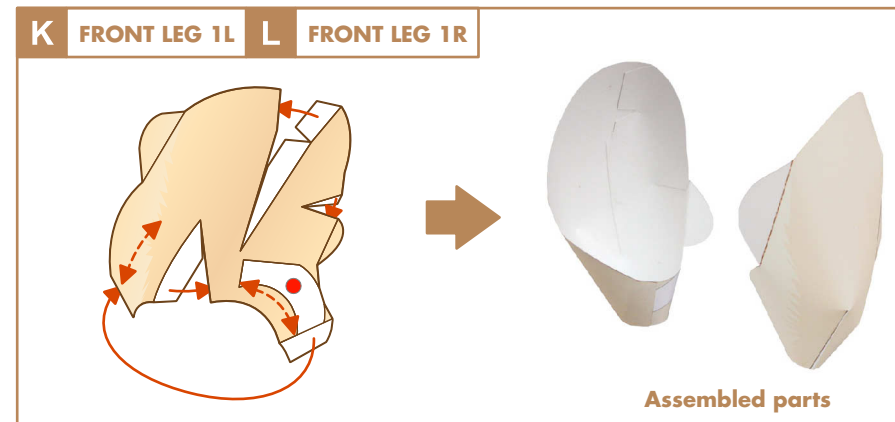
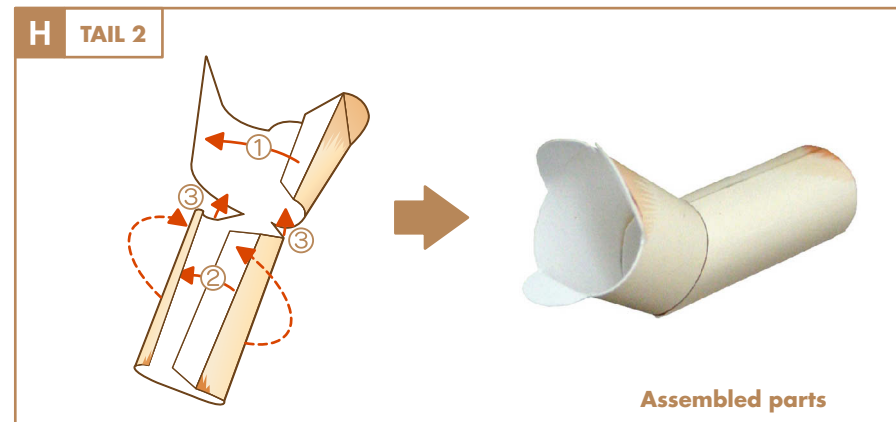
Attach  Curve 



Labrador Retriever : Assembly directions

 Parts to assemble ② 

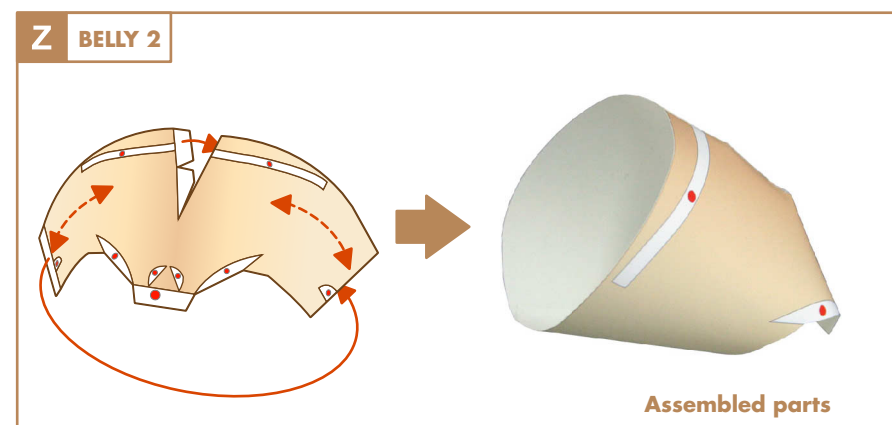
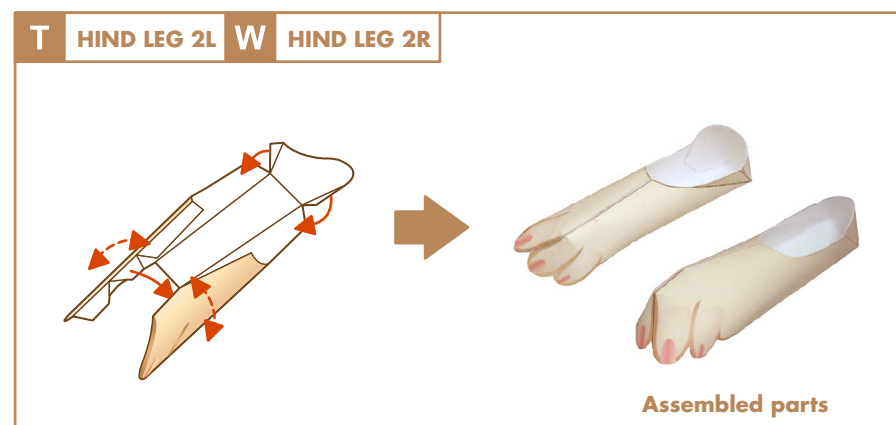
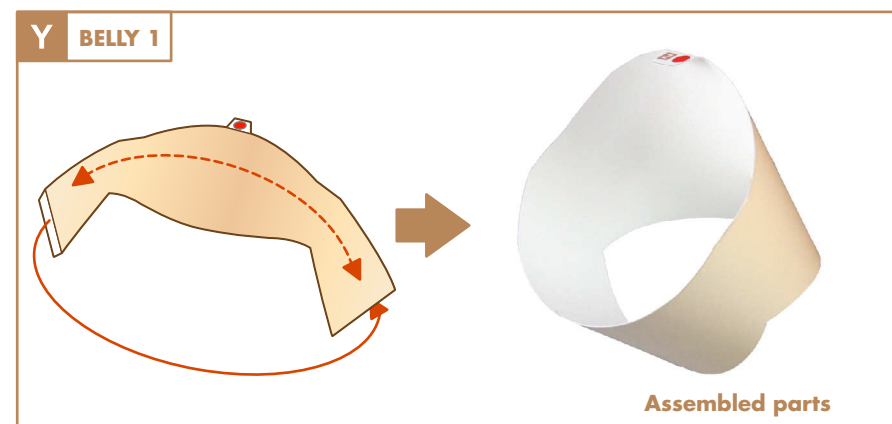
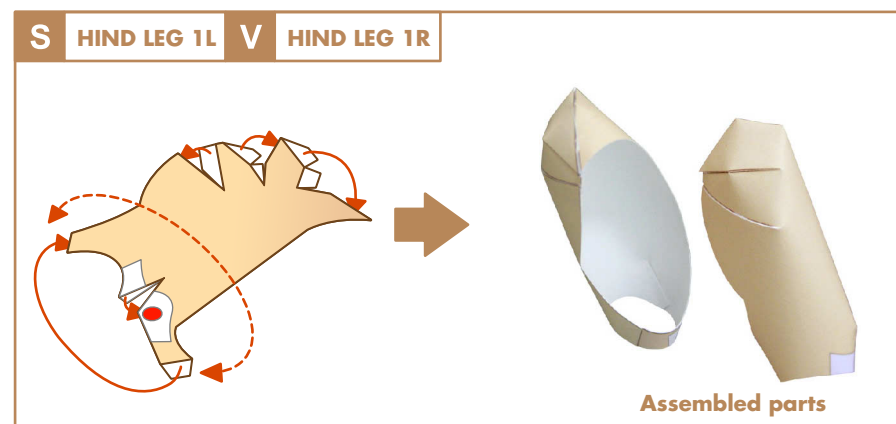
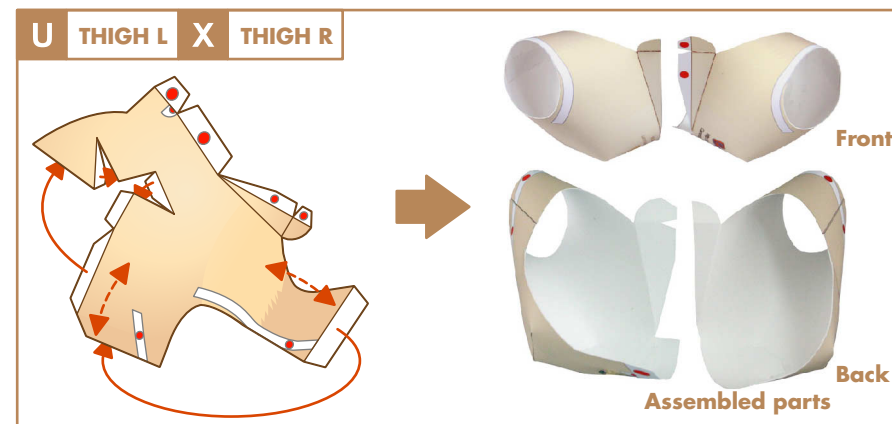
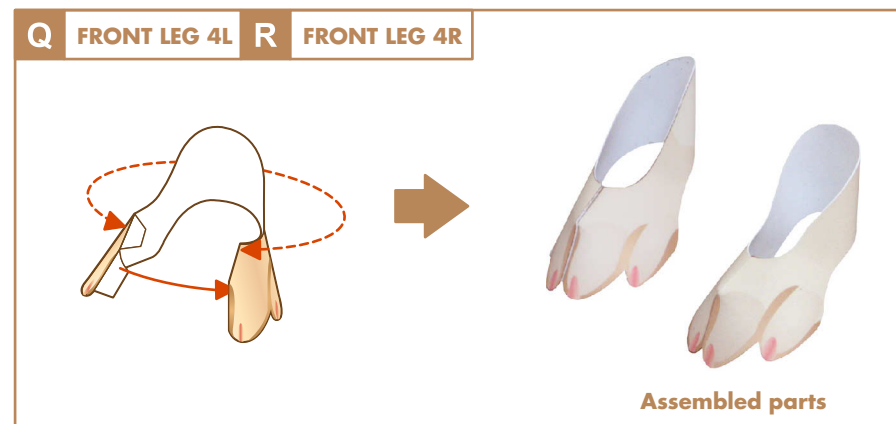
Attach  Curve 



Labrador Retriever : Assembly directions

Parts to assemble ③

Attach ———> Curve - - - ->



Attach → Curve - - - ->

