

WordPadPlus User's Guide

Introduction

WordPadPlus is a simple, easy to use utility that adds spell checking and word count capabilities to the free word processor with Windows 95, known as WordPad. This brings WordPad up to full word processing standards. If your word processing needs include letter writing, reports and memos then this package is ideal for you. Dictionaries are available in both US and UK English formats.

[Installation](#)

[Using WordPadPlus](#)

[Uninstalling](#)

[Technical Support](#)

Technical Support

Technical support is available, to reach us either write to the address below, fax or call us.

Nerds Unlimited
5 Rowes Mews
St Peters Basin
Quayside
Newcastle Upon Tyne
England
NE6 1TX

Phone/Fax : +44 (0) 191 2765056
Email : technicalsupport@nerdsunlimited.com

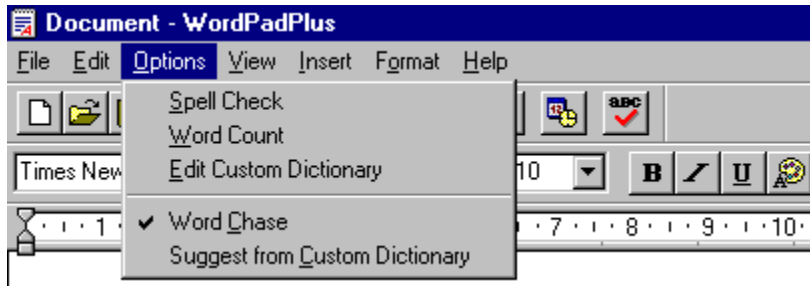
Installation

To install WordPadPlus simply run the program SETUP.EXE. The installation program will prompt you for an installation directory, the WordPadPlus files will be placed in here. WordPadPlus uses a spell checking toolkit known as SpellAPI, this will be installed into your Windows directory under the SPELLAPI directory.

Using WordPadPlus

WordPadPlus integrates fully with Microsoft WordPad, you do not need to run or call up any external programs. Once WordPad is launched, the extra features are incorporated immediately.

Once WordPad is running you will notice an extra menu called Options and a spell checker button in the toolbar.



Spell Check

Word Count

Edit Custom Dictionary

Word Chase

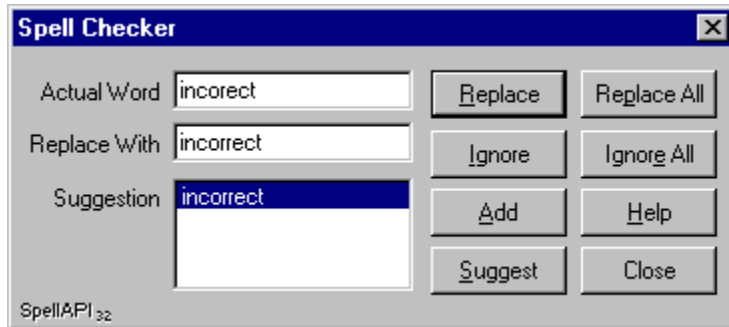
Suggest from Custom Dictionary

Uninstalling

An easy to use uninstall program has been included with this package. Please use this if you wish to take WordPadPlus off your system, don't use any third party uninstaller programs. The uninstall program can be found in the WordPadPlus folder under Programs in the Start Menu (WPUNINST.EXE).

Spell Check

To spell check either select the Spell Check menu option or the ABC button on the toolbar. You may either select a portion of text to check or if none is selected, the whole document will be selected. As with any other spell checker you may ignore, replace and add words. Any words added will be placed into the custom dictionary and can be edited at a later date.



ACTUAL WORD

This text field displays the word that has been designated as an error.

REPLACE WITH

This text field can be edited and includes the text that can be used to replace the incorrectly spelled word.

SUGGESTION

This is a simple list of all possible suggestions. If you click on a word in the list then that word is copied into the *Replace With* text field.

REPLACE

This button will replace the incorrect word with the suggestion held in the *Replace With* text field.

REPLACE ALL

This button will replace all occurrences of the incorrect word with the suggestion held in the *Replace With* text field.

IGNORE

Press this button and the spell checker will ignore the incorrect word.

IGNORE ALL

This will cause all occurrences of the incorrectly spelled word to be ignored.

ADD

Pressing this button will add the word held in the *Actual Word* text field to the dictionary of words. Valid words to add can only include the letters A to Z, hyphens and apostrophes.

SUGGEST

Clicking on this button will cause the spell checker to search for suggestions on the word held in the *Replace With* text field. Try an experiment by typing some words into the *Replace With* field and pressing the *Suggest* button.

CLOSE

This button will stop the spell checker from processing any more words and return the user back to the application.

Word Count

The word counter will count all the words in your document but ignore any numbers or words that are joined to numbers.

Edit Custom Dictionary

Choosing this option will launch you into the program Notepad with the Custom Dictionary file open. The file is held in standard text format and you may add and delete words from the list. The maximum size of the Custom Dictionary is 64k.

Word Chase

Word chase simply shows the words being checked in real time, in other words - you will see each word highlighted in the document as it is checked against the dictionary files. A tick in the menu option indicates it is active. Switching off word chase will speed up spell checking.

Suggest from Custom Dictionary

A tick in this menu option indicates that suggestions will be given, where appropriate, from the custom dictionary file. Switching this option off will speed up the process of suggesting words.

SpellAPI

SpellAPI is a toolkit that is available for developers to add spell checking facilities to their own programs.

For details on this product call : England +44 (0) 191 2765056 or visit our web site at **www.nerdsunlimited.com** for an evaluation version.

