

# Layout

## A Desktop Arranger for Windows 3.0

Mark D. Grosen  
August 1990

### Introduction

*Layout* is a utility for automatically arranging your desktop under Windows 3.0. It allows you to arrange your application windows and then save their positions and sizes to a file. Later, *Layout* can read this file and restore your windows to their original arrangement. You can keep several *Layout* files for each of your different desktop configurations. You can have *Layout* run at startup, so that every time you start Windows, your desktop will start in the same configuration.

### Installation

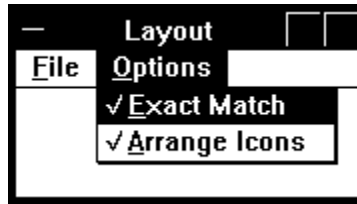
To install *Layout*, simply copy the file `layout.exe` to a directory in your path. A logical place is your Windows directory. *Layout* will look for files you have saved (with the default extension `.lay`) along your path when you run it later to restore your desktop.

### Saving Screen Layouts

*Layout* has two modes of operation: capturing the screen layout and restoring the layout. In the first mode, you run *Layout* with no arguments. You can do this from *Program Manager* or *File Manager*. After you have arranged your desktop to your liking, choose the File Save command. A message will prompt you to click on the window that will be made active when *Layout* is run later to restore your screen. (The active window is the top window that has the input focus). The cursor will change to a cross-hair while you are choosing a window. A dialog box will then prompt you for a filename in which to save the configuration.

There are two options that affect the way *Layout* will restore your desktop arrangement.

## - Layout -



The Exact Match option determines if a window must have the same window caption (the text in the bar above the menu) as the window caption in the Layout file. If Exact Match is checked, *Layout* will not adjust windows that are the same application, but have different captions.

For example, suppose you have several configurations for the Windows *Terminal* program. When you use *Terminal*, the name of the configuration file is listed in the caption. A typical caption might be **Terminal - UNIX.TRM**. If you save a Layout configuration with this caption and Exact Match checked, *Layout* will not adjust a *Terminal* window that has the caption **Terminal - BBS.TRM**. However, if you disable Exact Match, *Layout* will attempt to find any *Terminal* window and adjust its location and size to that in the saved *Layout* file.

The second option specifies if *Layout* will arrange the iconified windows after it arranges the open windows. This action is equivalent to bringing up the *Task List* utility and choosing the Arrange Icons command. Note that *Layout* does not save iconified windows positions (or its own position).

## Restoring Screen Layouts

After you have saved a desktop layout, you can retrieve it using the File Open command. A standard Windows file dialog box will allow you to select a file that will then be used to rearrange your screen to the layout specified in that file. (*Layout* will not adjust windows that it cannot match with descriptions in the *Layout* file.)

You can also have *Layout* run automatically when you double-click on a file with a `.lay` extension in *File Manager* by adding a line in the [Extensions] section of your `win.ini` file. The excerpt below shows

## - Layout -

an example. (Use *Notepad* or *Sysedit* to edit your `win.ini` file.)

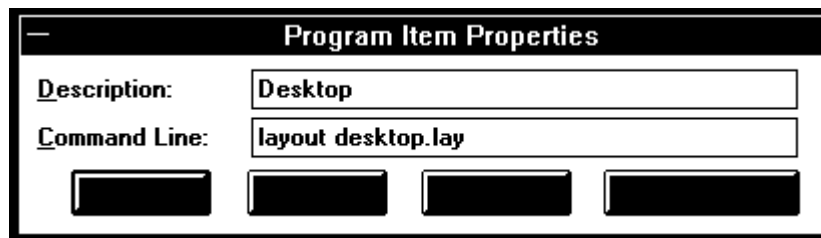
```
[Extensions]
cal=calendar.exe ^.cal
crd=cardfile.exe ^.crd
trm=terminal.exe ^.trm
txt=notepad.exe ^.txt
ini=notepad.exe ^.ini
pcx=pbrush.exe ^.pcx
bmp=pbrush.exe ^.bmp
wri=write.exe ^.wri
rec=recorder.exe ^.rec
lay=layout.exe ^.lay
```

You can also restore a screen arrangement by simply running *Layout* with the name of a *Layout* file saved earlier. There are two easy ways to do this: add a program item in *Program Manager* or add a *Layout* file to the `run` line in your `win.ini` file.

After you have saved a configuration in a *Layout* file, you can have it restored each time you start Windows by putting the name of the file as the last entry on the `run` line in your `win.ini` file. (Note this depends on having put the *Layout* extension in your `win.ini` file.) For example, if you have a layout in the file `desktop.lay`, you could use the following line to have it used each time Windows is started.

```
run=write clock unix.trm desktop.lay
```

Finally, you can use *Program Manager* to associate different screen configurations with the *Layout* program icon. Add a program item using an entry similar to the one below. (Note that you must specify the `.lay` extension.)



- Layout -

**Miscellaneous**

*Layout* is Copyright © 1990 by Mark D. Grosen. This program may be freely distributed. The author will not be liable for damages caused by the use of this program.

Comments or suggestions may be sent via email to [grosen@amadeus.ucsb.edu](mailto:grosen@amadeus.ucsb.edu). or by mail to:

Mark D. Grosen  
416 Mills Way Apt. B  
Goleta, CA 93117