

Calendar Publisher for Corel Draw! 2.0

Thank you for taking an interest in my latest creation, **Calendar Publisher for Corel Draw! 2.0**. This utility offers you the ability to create individual month calendars with such astonishing ease that you'll wonder how you did without it! Before you begin, please see "**Instructions**" at the bottom of this page -- HAVE FUN!!!

I feel that this is a terrific utility -- therefore, if **you** also find that it is a useful tool, and that it saves you time and money, please participate in the shareware system. All that I am asking for is **\$5.00** -- far less than the money you'll already be saving after one useage! (My first utility, Corel Draw! Screen & Density Guide (DTPCHA.ZIP, Library 6), was downloaded over 1,000 times on Compuserve. It was voted upload of the month for August. Yet, only **a few** people sent me the \$2.00 I had asked for (by the way, Corel just happened to use my Screen & Density Guide as a sample which was bundled in with the new Corel Draw! 2.0)! Keep an eye out for my retail product containing a bunch of handy utilities for Corel Draw 2.0! But, for now, please send \$5.00 to:

Keoni Ahlo
781 Ahukini St.
Honolulu, HI 96825

Thank you for your honesty.

Instructions

Important: Before you do anything to the Calendar Publisher, be sure that in the **GRID SETUP:**

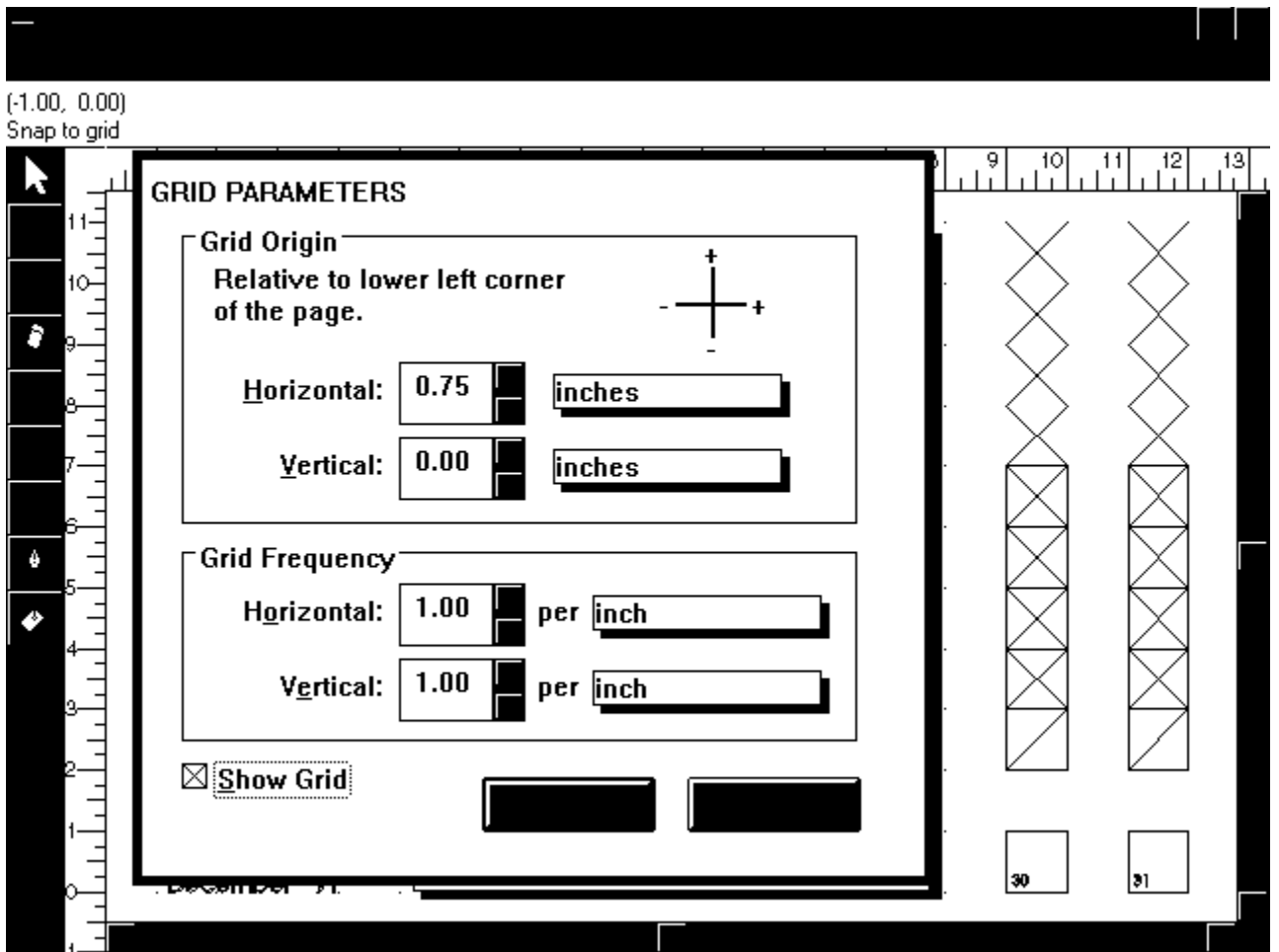
GRID ORIGIN

HORIZONTAL = 0.75
VERTICAL = 0.00

GRID FREQUENCY

HORIZONTAL = 1.00
VERTICAL = 1.00

Make sure that SNAP TO GRID is set ON.



The concept behind the Calendar Publisher is that each day of the month is a tile. The numbers of the month are grouped together with the box in which it is contained, therefore, you are able to select one or more "tiles", then sliding those tiles to a new location, making a new month. As long as the Grid is ON and set to 1", all movable tiles will snap right into place, like a puzzle!

By looking at calendar.cdr, you will see the pre-fabricated month of January, and on the left, all the other names of the month. On the right, you will see X's, X's in blocks, slashes in blocks and a few blocks with the numbers 30 and 31 in them. The X's are day-markers, the X's in blocks are shading tiles, boxes with slashes are blanks (I put these lines and boxes in the blocks so that you have a "handle" to grab on to while moving these tiles; use the numbers in the day-tiles to grab on to them), and the number blocks 30 and 31. These last two tiles are for certain months, where it may not be worth adding a whole extra row just to accommodate these extra days, so these days share a block with the same day of the previous week (bottom left-hand corner; see a June 1991 calendar for an example).

Even the names of the month snap right into place (they are all

right justified, so the names were intended to flush-right where "January '91" ends). Just drag "January '91" back to it's "home" on the left, then drag in the new month. That's it! It's that simple!

I hope you enjoy using the **Calendar Publisher for Corel Draw! 2.0**. If you have any comments and/or suggestions, please feel free to drop me a line on Compuserve, ID: 76226, 3303.