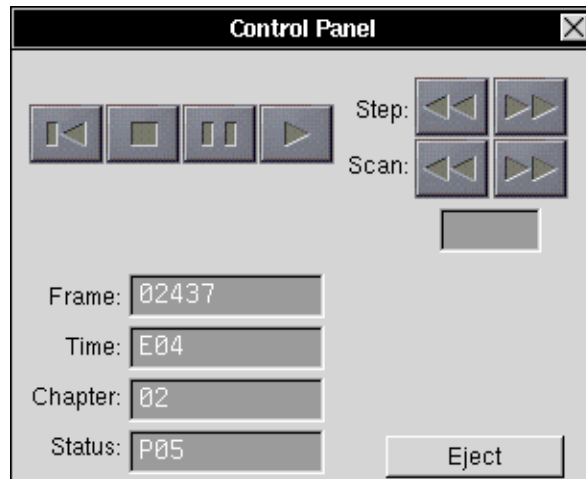

Tutorial (demo)

If you are using a CLV disc then the Step buttons in the Control Panel will have no effect.

- ↔ **If you are using a CAV disc then you can step through the frames on the laser disc backwards and forward by pressing the two *Step* buttons in the Control Panel.**
- ↔ **If you are using a CAV disc then you can search for a specific frame by entering the number of the desired frame in the *Frame* field and pressing return.**

Panel and one Video Panel.



Picture 5. The Control Panel.

- ↔ **Turn on the video by pressing the button *On* in the Video Panel.**
- ↔ **You can start the laser disc by pressing the *Play* button in the Control Panel.**
- ↔ **You can stop the laser disc by pressing the *Stop* button in the Control Panel.**
- ↔ **You can scan the laser disc backwards and forward by pressing the two *Scan* buttons in the Control Panel.**
- ↔ **You can play a specific chapter of the laser disc by entering the number of the chapter in the *Chapter* field in the Control Panel and pressing return.**

Note: There are different types of laser discs on the market. These can be categorized in to two major groups: CLV (Constant Linear Velocity) discs and CAV (Constant Angular Velocity) discs.

CLV discs are usually the “movie” or “music video” type if disc for home entertainment. You cannot search for individual frames on a CLV disc.

CAV discs are often used as “image libraries” since they allow you to search for individual frames.

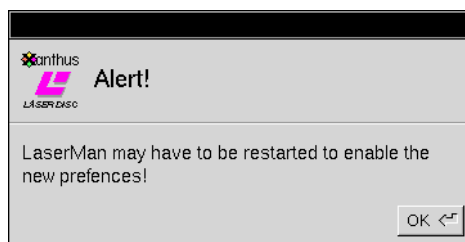
Tutorial (demo)

New Device Description Files for instructions.

↔ **Select a Device Description File.**

↔ **Click OK.**

A panel will now appear:



↔ **Click OK.**

You will now have to restart LaserMan.

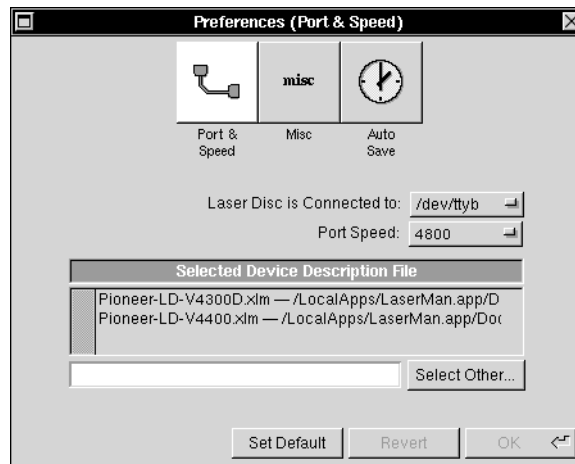
↔ **Quit LaserMan by choosing *Quit* in the menu.**

↔ **Start LaserMan again by double-clicking on the LaserMan program icon in the Workspace.**

Using LaserMan

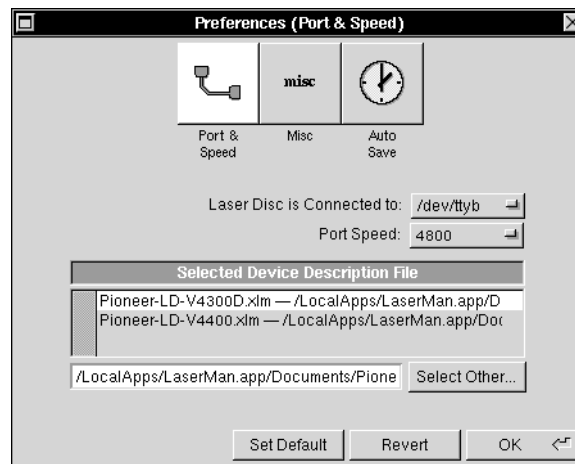
LaserMan should now be started and you should have two windows on the screen, one Control

Now the Preferences Panel will appear:



Picture 3. The Preferences Panel.

In the Preferences Panel you specify the Device Description File you want by selecting it in the list.



Picture 4. The Device Description File for the Pioneer LD-V4300D is selected.

Note: If there is no Device Description File for the Laser Disc Player you are using then you will have to create it yourself before continuing. Please refer to the chapter Creating

Tutorial (demo)

Launching the LaserMan application

Now you should start LaserMan.

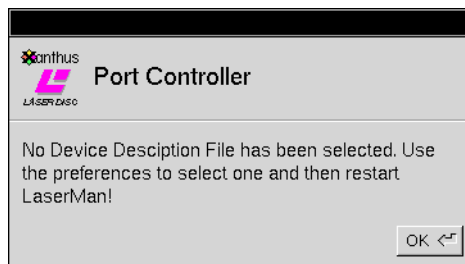
↔ **Double-click the LaserMan program icon in the Workspace.**



Picture 1. The LaserMan program icon.

Note: If you do not have LaserMan installed on your system, refer to the section 'Installing LaserMan' for installation information.

If this is the first time you start LaserMan this panel will appear:



Picture 2. No Device Description File is specified.

Note: If this panel does not appear, you can skip the next section (Specifying the Device Description File).

Specifying the Device Description File

↔ **Click OK.**

Tutorial (demo)

A Quick LaserMan Tutorial

This tutorial is a quick introduction to LaserMan.

Note: When there is a description of something that you should do, the sentence will be printed in boldface on its own line and will be preceded by the symbol ↔.

For example if you are supposed to click a button with the title *New*, it will look like this:

↔ **Click the button titled *New*.**

To follow the tutorial make sure you do everything that is marked with a ↔.

Connecting the Laser Disc Player

The first thing you should do is to connect the Laser Disc Player to your NeXT computer. You need one connection for the *control signals* and one connection for the *video signals*.

For the *control signals*, you should use a cable with one connector that matches the RS-232 socket of your Laser Disc Player, and one connector that matches the serial port socket of your NeXT computer. The control cable should be connected into the **Serial port B** of your NeXT computer.

Note: You can also connect the Laser Disc Player to Serial port A but then you have to change the Preferences settings in LaserMan. The default is Serial port B.

For the *video signals*, you should use a standard phono cable. The video cable should be connected into the **Video In A** of your NeXTdimension board.

↔ **Turn on your Laser Disc Player and insert a laser disc into it.**

Initializing the Laser Disc Player

Before you start LaserMan your Laser Disc Player should be turned on.

↔ **Turn on your Laser Disc Player and insert a laser disc into it.**